

Coastal Bend Workforce Area

(Not Seasonally Adjusted Unemployment Rates by WDA, MSA, & County)

Area	Area Type	Latest Monthly Data January 2024							Previous Monthly Data December 2023				Year Ago January 2023			
		Labor Force	Employment	Unemployment	Rate	M+-	Y+-		Labor Force	Employment	Unemployment	Rate	Labor Force	Employment	Unemployment	Rate
United States	Nation	166,428,000	159,650,000	6,778,000	4.1	0.6	-0.4		166,661,000	160,754,000	5,907,000	3.5	165,070,000	158,692,000	6,378,000	3.9
Texas	State	15,139,951	14,521,214	618,737	4.1	0.6	-0.8		15,090,824	14,564,917	525,907	3.5	14,875,993	14,242,108	633,885	4.3
Corpus Christi	MSA	207,718	198,471	9,247	4.5	0.8	-1.4		207,896	200,124	7,772	3.7	203,176	192,904	10,272	5.1
Coastal Bend	WDA	261,511	249,631	11,880	4.5	0.7	-1.3		261,047	251,110	9,937	3.8	256,401	243,276	13,125	5.1
Aransas Pass	County	9,456	9,007	449	4.7	0.5	-0.9		9,499	9,104	395	4.2	9,297	8,777	520	5.6
Bee	County	9,234	8,752	482	5.2	0.9	-0.6		9,088	8,696	392	4.3	9,223	8,690	533	5.8
Brooks	County	2,267	2,143	124	5.5	0.7	-0.5		2,242	2,134	108	4.8	2,344	2,204	140	6.0
Duval	County	4,881	4,653	228	4.7	0.5	0.4		4,943	4,735	208	4.2	5,003	4,788	215	4.3
Jim Wells	County	15,989	15,160	829	5.2	0.8	-0.5		15,604	14,925	679	4.4	15,728	14,833	895	5.7
Kenedy	County	125	116	9	7.2	-1.3	-0.6		118	108	10	8.5	115	106	9	7.8
Kleberg	County	13,118	12,483	635	4.8	0.9	-0.6		13,092	12,585	507	3.9	12,943	12,240	703	5.4
Live Oak	County	5,097	4,902	195	3.8	0.6	-0.5		5,028	4,867	161	3.2	4,878	4,666	212	4.3
Nueces	County	168,487	161,128	7,359	4.4	0.8	-0.5		168,663	162,534	6,129	3.6	164,663	156,598	8,065	4.9
Refugio	County	3,082	2,951	131	4.3	1.0	-0.6		3,036	2,936	100	3.3	2,991	2,845	146	4.9
San Patricio	County	29,775	28,336	1,439	4.8	0.6	-1.0		29,734	28,486	1,248	4.2	29,216	27,529	1,687	5.8

(M+-) Change in unemployment rate from last month (Increase) (Decrease)

(Y+-) Change in unemployment rate from last year (Increase) (Decrease)

- Earnings for all occupations Coastal Bend, expressed as hourly rate (TWC):

Coastal Bend	All Occupations-	Average \$17.76/hr.	Entry level \$10.89/hr.	Experienced workers \$29.14/hr.	Top 10% \$33.56/hr.
Texas	All Occupations-	Average \$18.76/hr.	Entry level \$11.70/hr.	Experienced workers \$33.25/hr.	Top 10% \$39.64/hr.

- Educational Attainment for population 25 years of age and older - Corpus Christi (Census American Fact Finder/American Community Survey):

Less than 9 th grade	7.0%	12 th grade & GED	27%	Associates degree	8.0%	Graduate or Professional	11%
9 th thru 11 th grade	10%	Some College	24%	Bachelor's degree	13%		

- Median earnings Corpus Christi by education for persons 25 years of age & up (Census AFF/ACS):

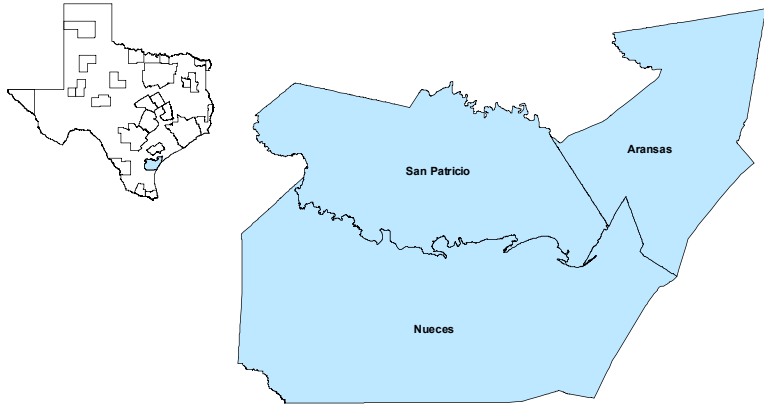
Less than High School &	\$15,437	Some College or Associates	\$44,078	Graduate or Professional	\$56,681
	\$26,818	Bachelor's			

A proud partner of the AmericanJobCenter network

Equal Opportunity Employer/Program: Auxiliary aids and services are available upon request to individuals with disabilities.
Deaf, hard-of-hearing or speech impaired customers may contact Relay Texas: 1-800-735-2989 (TDD) and 1-800-735-2988or 7-1-1 (Voice)

Corpus Christi MSA

January 2024



MSA Labor Force Statistics

	Jan-24	Dec-23	Jan-23	Yearly Change
Civilian Labor Force	207,718	207,896	203,176	4,542
Employed	198,471	200,124	192,904	5,567
Unemployed	9,247	7,772	10,272	-1,025
Unemployment Rate	4.5%	3.7%	5.1%	-0.6%

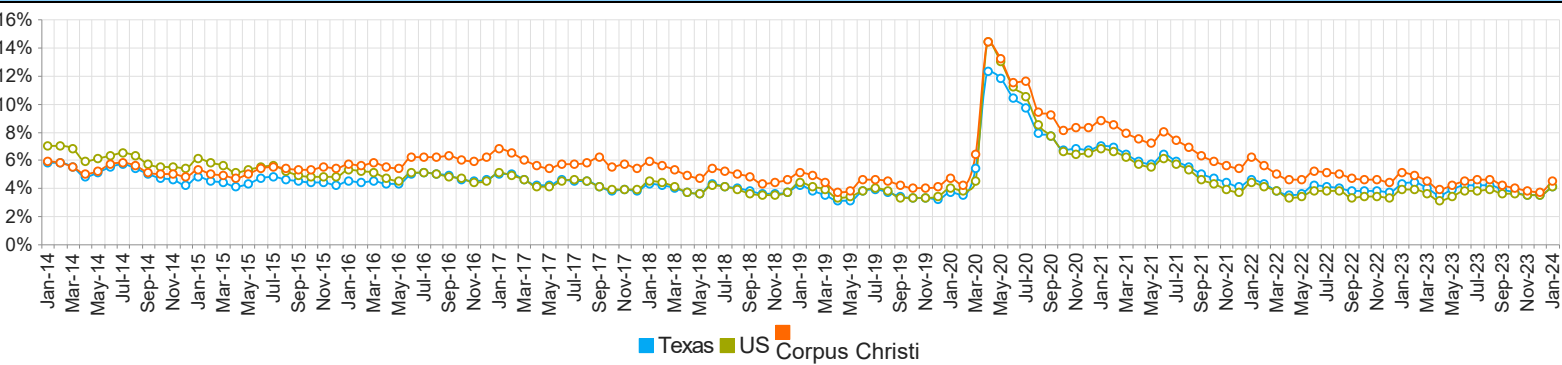
Texas Labor Force Statistics

	Jan-24	Dec-23	Jan-23	Yearly Change
Civilian Labor Force	15,139,951	15,090,824	14,875,993	263,958
Employed	14,521,214	14,564,917	14,242,108	279,106
Unemployed	618,737	525,907	633,885	-15,148
Unemployment Rate	4.1%	3.5%	4.3%	-0.2%

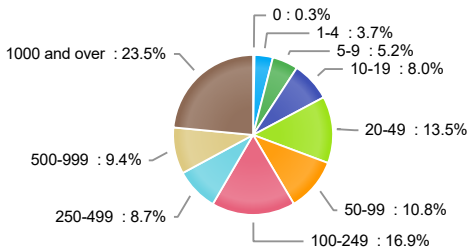
US Labor Force Statistics

	Jan-24	Dec-23	Jan-23	Yearly Change
Civilian Labor Force	166,428,000	166,661,000	165,070,000	1,358,000
Employed	159,650,000	160,754,000	158,692,000	958,000
Unemployed	6,778,000	5,907,000	6,378,000	400,000
Unemployment Rate	4.1%	3.5%	3.9%	0.2%

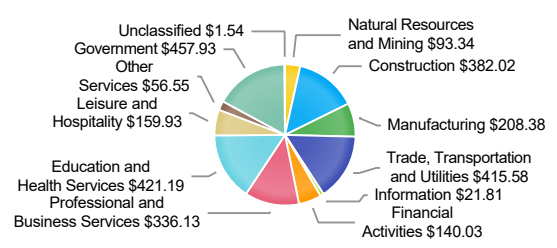
Historical Unemployment Rates



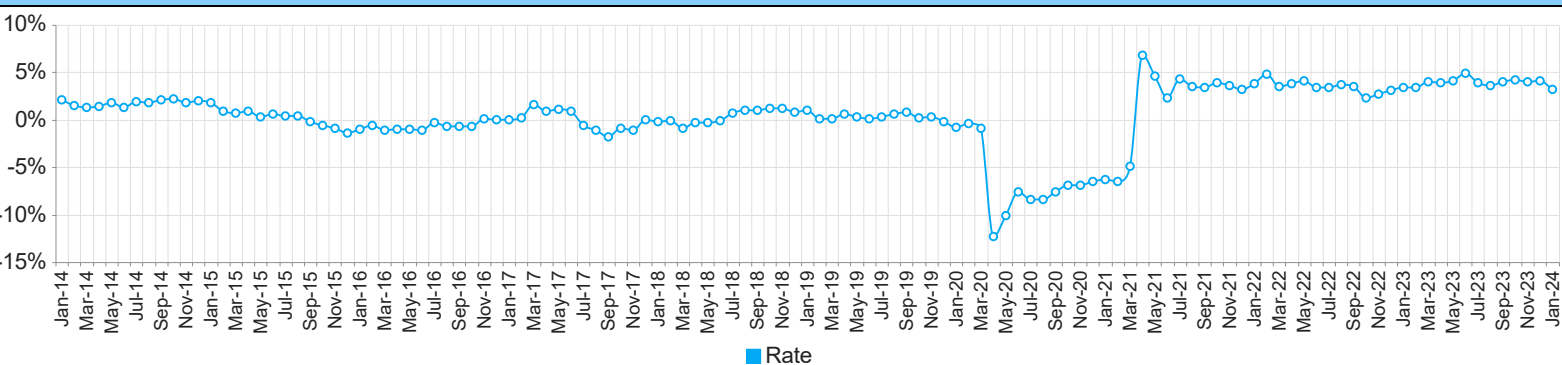
Employment by Size Class (3rd Quarter 2023)



Wages by Industry (in millions) (3rd Quarter 2023)



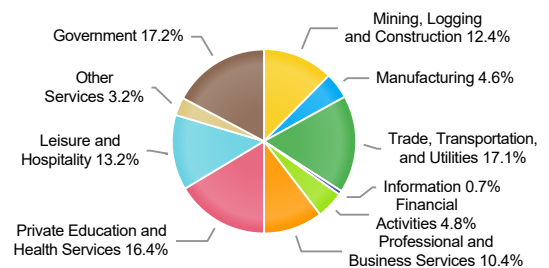
Annual Growth Rate Total Non-agricultural employment



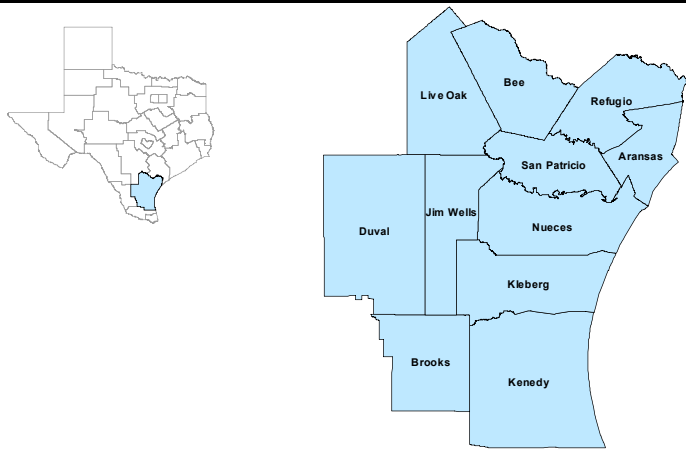
Employment by Industry (January 2024)

Industry	Current Month Employment	% Monthly Change	% Yearly Change
Total Nonfarm	197,400	-2.1%	3.2%
Mining, Logging and Construction	24,500	-1.6%	20.1%
Manufacturing	9,000	-1.1%	4.7%
Trade, Transportation, and Utilities	33,800	-3.4%	0.9%
Information	1,400	0.0%	0.0%
Financial Activities	9,400	0.0%	4.4%
Professional and Business Services	20,500	-0.5%	1.5%
Private Education and Health Services	32,400	-1.2%	1.2%
Leisure and Hospitality	26,000	-2.6%	1.6%
Other Services	6,400	0.0%	3.2%
Government	34,000	-3.7%	-0.9%

Employment by Industry (January 2024)



Coastal Bend Workforce Development Area



January 2024

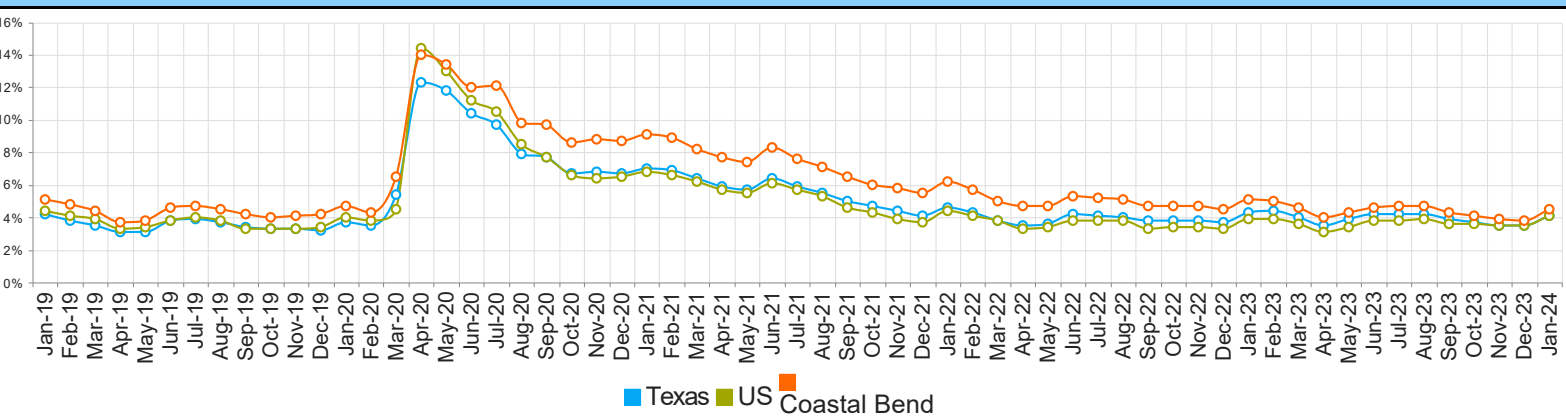
WDA Labor Force Statistics				
	Jan-24	Dec-23	Jan-23	Yearly Change
Civilian Labor Force	261,511	261,047	256,401	5,110
Employed	249,631	251,110	243,276	6,355
Unemployed	11,880	9,937	13,125	-1,245
Unemployment Rate	4.5%	3.8%	5.1%	-0.6%

Texas Labor Force Statistics				
	Jan-24	Dec-23	Jan-23	Yearly Change
Civilian Labor Force	15,139,951	15,090,824	14,875,993	263,958
Employed	14,521,214	14,564,917	14,242,108	279,106
Unemployed	618,737	525,907	633,885	-15,148
Unemployment Rate	4.1%	3.5%	4.3%	-0.2%

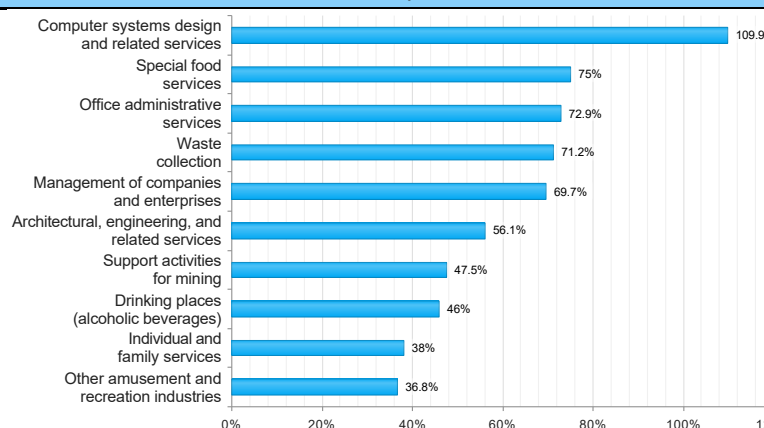
US Labor Force Statistics				
	Jan-24	Dec-23	Jan-23	Yearly Change
Civilian Labor Force	166,428,000	166,661,000	165,070,000	1,358,000
Employed	159,650,000	160,754,000	158,692,000	958,000
Unemployed	6,778,000	5,907,000	6,378,000	400,000
Unemployment Rate	4.1%	3.5%	3.9%	0.2%

Continued Claims for the Week of the 12th				
	Jan-24	Dec-23	Jan-23	Yearly Change
WDA	2,008	1,908	1,826	182
Texas	116,331	114,107	97,519	18,812

Historical Unemployment Rates



Projected Top Ten Fastest Growing Industries in WDA (% Growth 2020-2030)

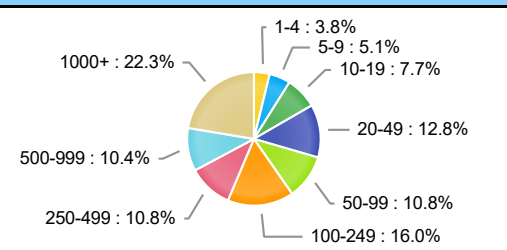


Average Weekly Wage (3rd Quarter 2023)					
	Q3 2023	Q2 2023	Q3 2022	Quarterly Change	Yearly Change
WDA	\$1,053	\$1,036	\$1,036	\$17	\$17
Texas	\$1,335	\$1,321	\$1,332	\$14	\$3
US	\$1,334	\$1,332	\$1,333	\$2	\$1

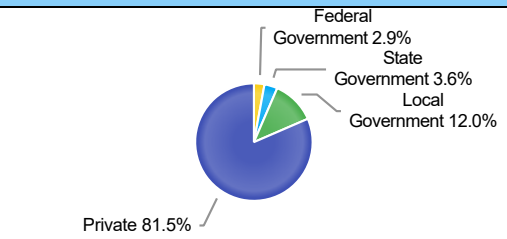
Employment by Industry (3rd Quarter 2023, Percent Change)

Industry	Employment	% of Total	% Quarterly Change	% Yearly Change
Natural Resources and Mining	8,183	3.4%	-1.5%	1.2%
Construction	23,100	9.7%	1.9%	17.6%
Manufacturing	12,869	5.4%	0.8%	3.2%
Trade, Transportation and Utilities	42,676	18.0%	0.5%	-0.9%
Information	1,668	0.7%	2.1%	-1.9%
Financial Activities	10,665	4.5%	3.1%	6.5%
Professional and Business Services	21,622	9.1%	-1.1%	2.3%
Education and Health Services	65,831	27.7%	-2.5%	1.4%
Leisure and Hospitality	33,470	14.1%	0.4%	4.0%
Other Services	5,907	2.5%	-3.3%	2.3%
Public Administration	11,621	4.9%	0.7%	0.5%

Employment by Size Class (3rd Quarter 2023)



Employment by Ownership (3rd Quarter 2023)



Employment by Industry (3rd Quarter 2023)

