

Coastal Bend Workforce Area

(Not Seasonally Adjusted Unemployment Rates by WDA, MSA, & County)

Area	Area Type	Latest Monthly Data July 2018						Previous Monthly Data June 2018				Year Ago July 2017			
		Labor Force	Employment	Unemployment	Rate	M+-	Y+-	Labor Force	Employment	Unemployment	Rate	Labor Force	Employment	Unemployment	Rate
United States	Nation	162,245,000	155,965,000	6,280,000	3.9	-0.1	-0.4	162,140,000	155,576,000	6,564,000	4.0	160,467,000	153,511,000	6,956,000	4.3
Texas	State	13,824,447	13,276,703	547,744	4.0	0.0	-0.1	13,813,450	13,255,675	557,775	4.0	13,538,176	12,981,460	556,716	4.1
Corpus Christi	MSA	206,068	195,369	10,699	5.2	-0.3	-0.5	206,849	195,548	11,301	5.5	208,422	196,644	11,778	5.7
Coastal Bend	WDA	260,838	247,081	13,757	5.3	-0.2	-0.6	262,645	248,141	14,504	5.5	263,784	248,268	15,516	5.9
Aransas	County	10,182	9,621	561	5.5	-0.5	0.1	10,260	9,643	617	6.0	10,193	9,644	549	5.4
Bee	County	9,528	9,015	513	5.4	-0.2	-1.2	9,691	9,145	546	5.6	9,832	9,185	647	6.6
Brooks	County	2,511	2,323	188	7.5	0.1	-1.3	2,512	2,327	185	7.4	2,432	2,219	213	8.8
Duval	County	4,723	4,430	293	6.2	-0.1	-1.1	4,794	4,493	301	6.3	4,752	4,405	347	7.3
Jim Wells	County	16,391	15,414	977	6.0	-0.1	-1.5	16,848	15,818	1,030	6.1	16,578	15,333	1,245	7.5
Kenedy	County	275	265	10	3.6	0.0	0.3	277	267	10	3.6	239	231	8	3.3
Kleberg	County	12,569	11,855	714	5.7	-0.1	-1.0	12,853	12,109	744	5.8	12,947	12,078	869	6.7
Live Oak	County	5,563	5,356	207	3.7	-0.2	-0.8	5,587	5,367	220	3.9	5,482	5,235	247	4.5
Nueces	County	165,831	157,635	8,196	4.9	-0.3	-0.5	166,309	157,730	8,579	5.2	167,746	158,689	9,057	5.4
Refugio	County	3,210	3,054	156	4.9	-0.3	-0.3	3,234	3,067	167	5.2	3,100	2,938	162	5.2
San Patricio	County	30,055	28,113	1,942	6.5	-0.5	-0.6	30,280	28,175	2,105	7.0	30,483	28,311	2,172	7.1

(M+-) Change in unemployment rate from last month (Increase) (Decrease)

(Y+-) Change in unemployment rate from last year (Increase) (Decrease)

- Earnings for all occupations Coastal Bend, expressed as hourly rate (TWC):

Coastal Bend	All Occupations-	Average \$18.35/hr.	Entry level \$8.58/hr.	Experienced workers \$23.24/hr.	Top 10% \$33.56/hr.
Texas	All Occupations-	Average \$20.97/hr.	Entry level \$8.88/hr.	Experienced workers \$ 27.02/hr.	Top 10% \$39.64/hr.

- Educational Attainment for population 25 years of age and older - Corpus Christi (Census American Fact Finder/American Community Survey):

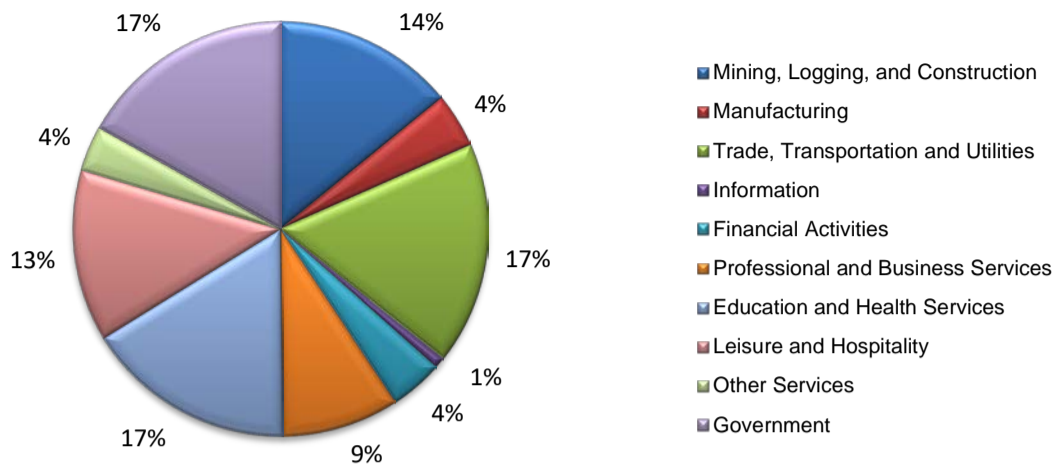
Less than 9th grade	8.7%	12th grade & GED	27.7%	Associates degree	7.0%	Graduate or Professional degrees	8.4%
9th thru 11th grade	9.3%	Some College	25.1%	Bachelors degree	13.8%		

- Median earnings Corpus Christi by education for persons 25 years of age & up (Census AFF/ACS): **\$27,211** (\$36,380 male/ \$22,328 female)

Less than High School	\$15,437	Some College or Associates	\$28,739	Graduate or Professional	\$56,681
High School & GED	\$26,818	Bachelor's	\$44,078		

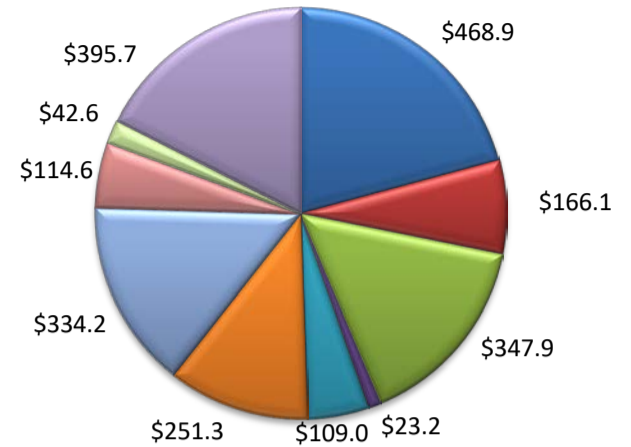
(Aransas, Nueces, San Patricio)

Industry Composition



Wages by Industry (in millions)

4th Quarter 2017



Employment by Industry

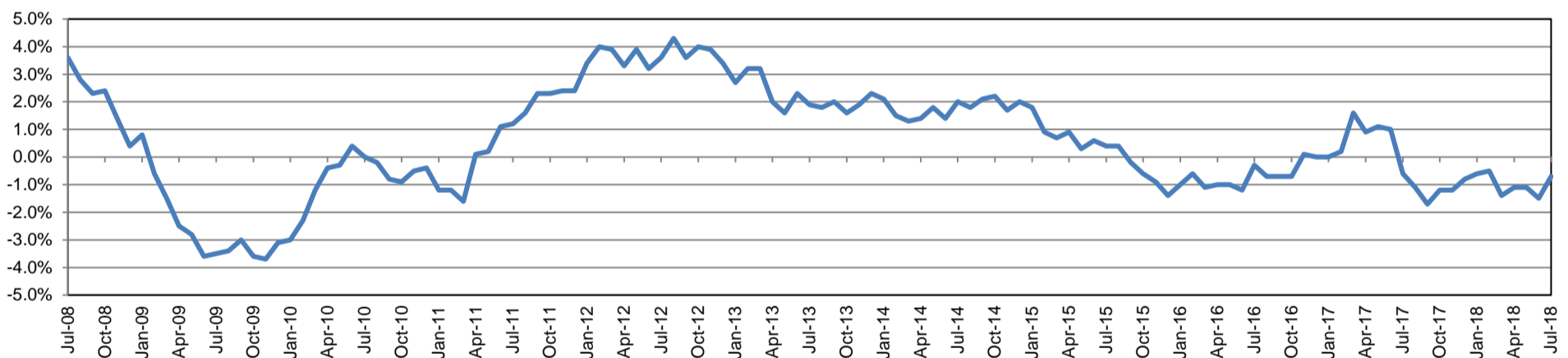
	Jul-18	Jun-18	Jul-17	Monthly Change		Annual Change	
				Actual	%	Actual	%
Total Nonfarm	190,100	192,300	191,500	-2,200	-1.1%	-1,400	-0.7%
Mining, Logging and Construction	26,800	26,600	25,600	200	0.8%	1,200	4.7%
Manufacturing	8,100	8,200	8,300	-100	-1.2%	-200	-2.4%
Trade, Transportation, and Utilities	32,900	33,000	33,600	-100	-0.3%	-700	-2.1%
Information	1,700	1,700	1,800	0	0.0%	-100	-5.6%
Financial Activities	7,900	7,900	7,900	0	0.0%	0	0.0%
Professional and Business Services	17,300	17,400	16,700	-100	-0.6%	600	3.6%
Education and Health Services	31,200	31,100	31,000	100	0.3%	200	0.6%
Leisure and Hospitality	25,400	25,400	27,400	0	0.0%	-2,000	-7.3%
Other Services	6,700	6,800	6,900	-100	-1.5%	-200	-2.9%
Government	32,100	34,200	32,300	-2,100	-6.1%	-200	-0.6%

Industry Size Class

December 2017

Size Class	Employees per firm	Number of Firms	Employment in Size Class	% Total Employment
9	1000+	21	49,061	26.1%
8	500-999	20	13,820	7.4%
7	250-499	51	17,881	9.5%
6	100-249	222	32,363	17.2%
5	50-99	274	19,048	10.1%
4	20-49	798	24,353	13.0%
3	10-19	1,056	14,328	7.6%
2	5-9	1,452	9,630	5.1%
1	1-4	3,624	7,467	4.0%
0	0	729	0	0.0%
Total		8,247	187,951	100.0%

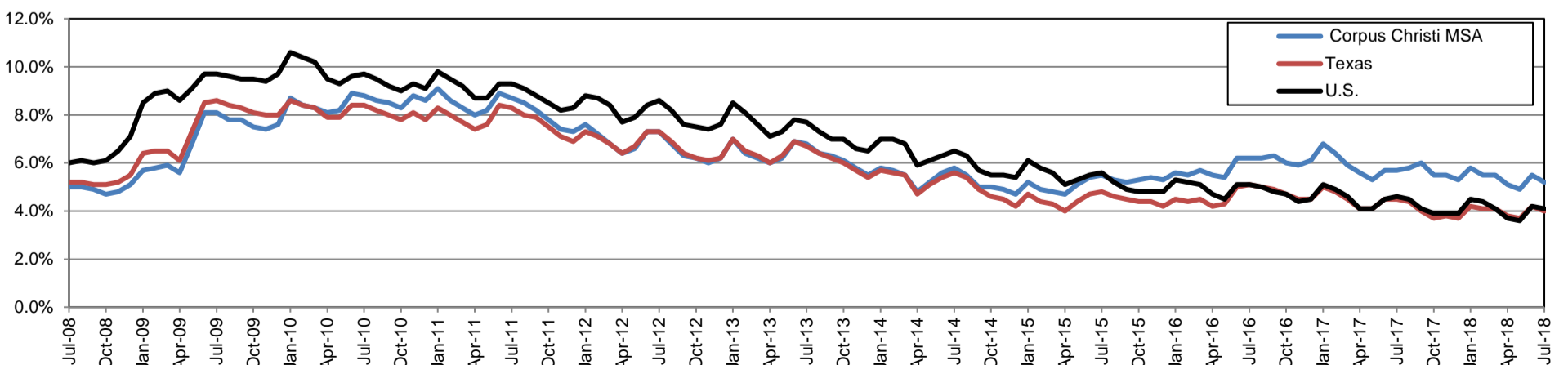
Annual Growth Rate for Total Nonagricultural Employment



Unemployment Information (all estimates in thousands)

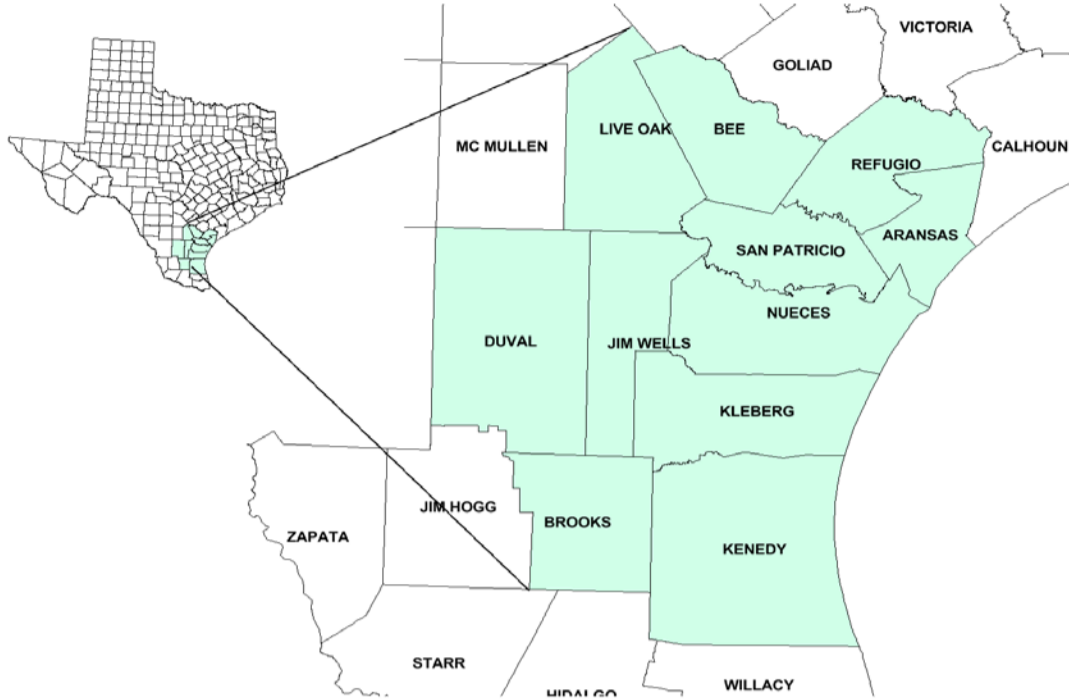
	Corpus Christi MSA				Texas (Actual)				United States (Actual)			
	C.L.F.	Emp.	Unemp.	Rate	C.L.F.	Emp.	Unemp.	Rate	C.L.F.	Emp.	Unemp.	Rate
Jul-18	206.1	195.4	10.7	5.2	13,840.5	13,283.9	556.6	4.0	163,734.0	157,004.0	6,730.0	4.1
Jun-18	206.8	195.5	11.3	5.5	13,845.0	13,262.0	583.0	4.2	163,277.0	156,465.0	6,812.0	4.2
Jul-17	208.4	196.6	11.8	5.7	13,571.9	12,967.6	604.2	4.5	161,911.0	154,470.0	7,441.0	4.6

Historical Unemployment Rates



Coastal Bend Workforce Development Area

July 2018



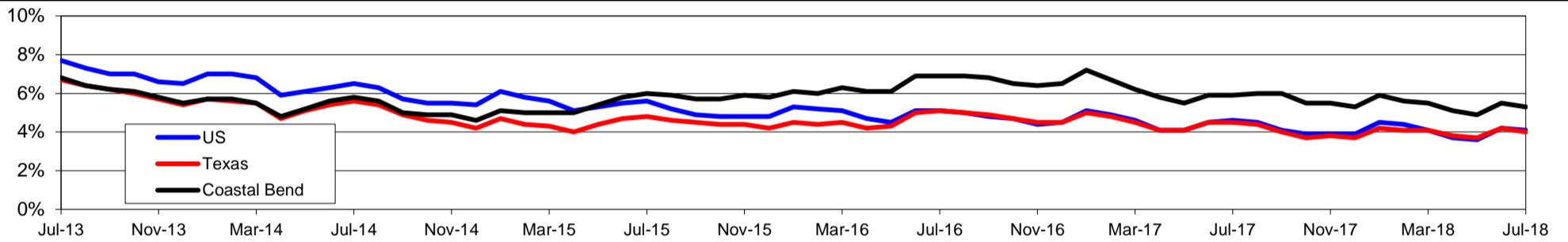
WDA Labor Force Statistics				
	Jul-18	Jun-18	Jul-17	OTY
CLF	260,838	262,645	263,784	-2,946
Employed	247,081	248,141	248,268	-1,187
Unemployed	13,757	14,504	15,516	-1,759
Rate	5.3%	5.5%	5.9%	-0.6%

Texas Labor Force Statistics				
	Jul-18	Jun-18	Jul-17	OTY
CLF	13,840,527	13,844,974	13,571,881	268,646
Employed	13,283,897	13,262,013	12,967,640	316,257
Unemployed	556,630	582,961	604,241	-47,611
Rate	4.0%	4.2%	4.5%	-0.5%

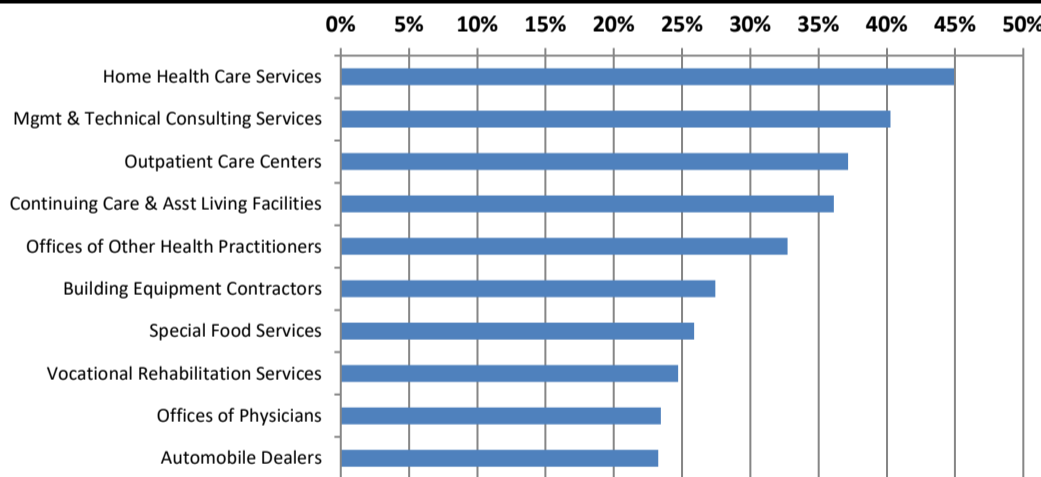
US Labor Force Statistics				
	Jul-18	Jun-18	Jul-17	OTY
CLF	163,734,000	163,277,000	161,911,000	1,823,000
Employed	157,004,000	156,465,000	154,470,000	2,534,000
Unemployed	6,730,000	6,812,000	7,441,000	-711,000
Rate	4.1%	4.2%	4.6%	-0.5%

Continued Claims for the Week of the 12th				
	Jul-18	Jun-18	Jul-17	OTY
WDA	2,491	2,465	3,331	-840
Texas	102,645	101,223	124,432	-21,787

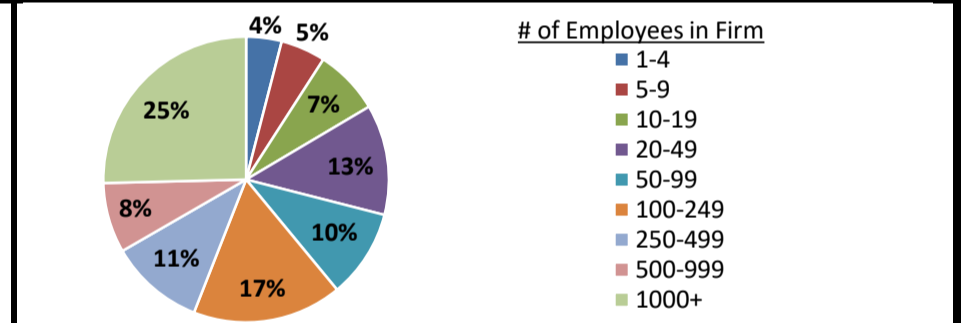
Historical Unemployment Rates



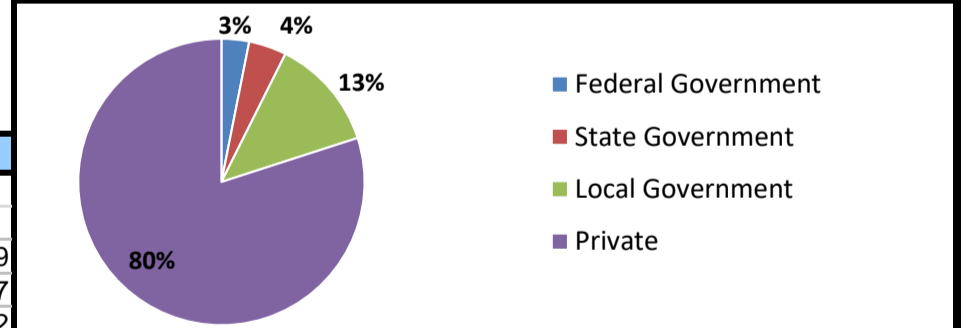
Projected Fastest Growing Industries in WDA (% growth 2014-2024)



Employment by Size Class (4th Quarter 2017)



Employment by Ownership (4th Quarter 2017)



Average Weekly Wage (4th Quarter 2017)

	Q4 2017	Q3 2017	Q4 2016	Change	
				Quarter	Year
WDA	\$908	\$860	\$869	\$47	\$39
Texas	\$1,109	\$1,032	\$1,072	\$77	\$37
US	\$1,109	\$1,020	\$1,067	\$89	\$42

Employment by Industry (4th Quarter 2017, Percent Change)

Industry	Employment	% of total	% Change	
			Quarter	Year
Natural resources and mining	11,000	4.7%	-2.4%	15.5%
Construction	24,877	10.5%	5.2%	-0.7%
Manufacturing	12,331	5.2%	-0.5%	-2.2%
Trade, transportation and utilities	43,650	18.5%	1.6%	-1.3%
Information	2,093	0.9%	0.4%	-2.1%
Financial activities	9,448	4.0%	-0.5%	1.8%
Professional and business services	19,497	8.3%	2.9%	7.1%
Education and health services	65,408	27.7%	4.9%	-3.1%
Leisure and hospitality	29,934	12.7%	-7.1%	-2.2%
Other services	5,752	2.4%	-4.6%	-7.9%
Public administration	11,907	5.0%	-0.8%	-2.1%
Total	235,897	100.0%	1.1%	-0.7%

Employment by Industry (4th Quarter 2017)

