

# Coastal Bend Workforce Area

(Not Seasonally Adjusted Unemployment Rates by WDA, MSA, & County)

| Area           | Area Type | Latest Monthly Data August 2018 |             |              |      |      |      | Previous Monthly Data July 2018 |             |              |      | Year Ago August 2017 |             |              |      |
|----------------|-----------|---------------------------------|-------------|--------------|------|------|------|---------------------------------|-------------|--------------|------|----------------------|-------------|--------------|------|
|                |           | Labor Force                     | Employment  | Unemployment | Rate | M+-  | Y+-  | Labor Force                     | Employment  | Unemployment | Rate | Labor Force          | Employment  | Unemployment | Rate |
| United States  | Nation    | 161,776,000                     | 155,542,000 | 6,234,000    | 3.9  | 0.0  | -0.5 | 162,245,000                     | 155,965,000 | 6,280,000    | 3.9  | 160,598,000          | 153,471,000 | 7,127,000    | 4.4  |
| Texas          | State     | 13,822,243                      | 13,286,314  | 535,929      | 3.9  | -0.1 | -0.1 | 13,824,491                      | 13,276,752  | 547,739      | 4.0  | 13,557,380           | 13,011,807  | 545,573      | 4.0  |
| Corpus Christi | MSA       | 205,195                         | 194,940     | 10,255       | 5.0  | -0.2 | -0.8 | 206,473                         | 195,778     | 10,695       | 5.2  | 206,972              | 194,978     | 11,994       | 5.8  |
| Coastal Bend   | WDA       | 259,453                         | 246,383     | 13,070       | 5.0  | -0.3 | -1.0 | 261,248                         | 247,495     | 13,753       | 5.3  | 261,979              | 246,256     | 15,723       | 6.0  |
| Aransas        | County    | 10,141                          | 9,608       | 533          | 5.3  | -0.2 | -0.1 | 10,201                          | 9,640       | 561          | 5.5  | 10,132               | 9,582       | 550          | 5.4  |
| Bee            | County    | 9,446                           | 8,960       | 486          | 5.1  | -0.3 | -1.6 | 9,525                           | 9,013       | 512          | 5.4  | 9,751                | 9,097       | 654          | 6.7  |
| Brooks         | County    | 2,467                           | 2,325       | 142          | 5.8  | -1.7 | -2.9 | 2,511                           | 2,323       | 188          | 7.5  | 2,431                | 2,220       | 211          | 8.7  |
| Duval          | County    | 4,652                           | 4,393       | 259          | 5.6  | -0.6 | -1.9 | 4,723                           | 4,429       | 294          | 6.2  | 4,729                | 4,373       | 356          | 7.5  |
| Jim Wells      | County    | 16,167                          | 15,259      | 908          | 5.6  | -0.4 | -1.9 | 16,393                          | 15,417      | 976          | 6.0  | 16,411               | 15,174      | 1,237        | 7.5  |
| Kenedy         | County    | 281                             | 271         | 10           | 3.6  | 0.0  | 0.7  | 275                             | 265         | 10           | 3.6  | 243                  | 236         | 7            | 2.9  |
| Kleberg        | County    | 12,564                          | 11,889      | 675          | 5.4  | -0.3 | -1.1 | 12,573                          | 11,858      | 715          | 5.7  | 12,922               | 12,078      | 844          | 6.5  |
| Live Oak       | County    | 5,530                           | 5,334       | 196          | 3.5  | -0.2 | -1.2 | 5,565                           | 5,357       | 208          | 3.7  | 5,453                | 5,197       | 256          | 4.7  |
| Nueces         | County    | 165,102                         | 157,217     | 7,885        | 4.8  | -0.1 | -0.7 | 166,163                         | 157,966     | 8,197        | 4.9  | 166,512              | 157,293     | 9,219        | 5.5  |
| Refugio        | County    | 3,151                           | 3,012       | 139          | 4.4  | -0.4 | -0.9 | 3,210                           | 3,055       | 155          | 4.8  | 3,067                | 2,903       | 164          | 5.3  |
| San Patricio   | County    | 29,952                          | 28,115      | 1,837        | 6.1  | -0.3 | -1.2 | 30,109                          | 28,172      | 1,937        | 6.4  | 30,328               | 28,103      | 2,225        | 7.3  |

(M+-) Change in unemployment rate from last month (Increase) (Decrease)

(Y+-) Change in unemployment rate from last year (Increase) (Decrease)

- Earnings for all occupations Coastal Bend, expressed as hourly rate (TWC):

|                     |                         |                            |                               |   |                            |
|---------------------|-------------------------|----------------------------|-------------------------------|---|----------------------------|
| <b>Coastal Bend</b> | <b>All Occupations-</b> | <b>Average \$18.35/hr.</b> | <b>Entry level \$8.58/hr.</b> | <b>Experienced workers \$23.24/hr.</b>  | <b>Top 10% \$33.56/hr.</b> |
| <b>Texas</b>        | <b>All Occupations-</b> | <b>Average \$20.97/hr.</b> | <b>Entry level \$8.88/hr.</b> | <b>Experienced workers \$ 27.02/hr.</b> | <b>Top 10% \$39.64/hr.</b> |

- Educational Attainment for population 25 years of age and older - Corpus Christi (Census American Fact Finder/American Community Survey):

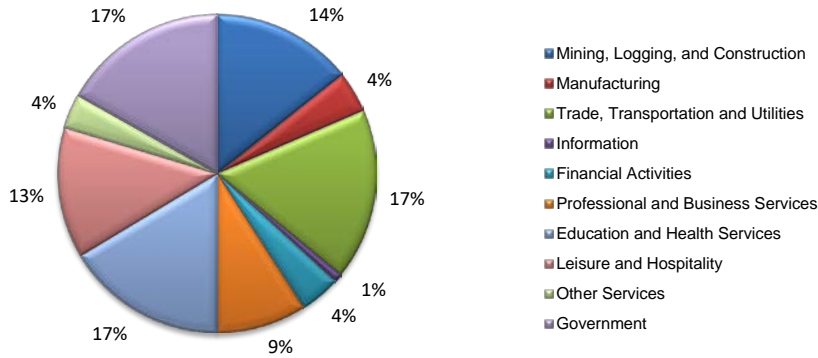
|  |             |  |              |                          |              |   |             |
|--|-------------|--|--------------|--------------------------|--------------|---|-------------|
| <b>Less than 9<sup>th</sup> grade</b>            | <b>8.7%</b> | <b>12<sup>th</sup> grade &amp; GED</b> | <b>27.7%</b> | <b>Associates degree</b> | <b>7.0%</b>  | <b>Graduate or Professional degrees</b> | <b>8.4%</b> |
| <b>9<sup>th</sup> thru 11<sup>th</sup> grade</b> | <b>9.3%</b> | <b>Some College</b>                    | <b>25.1%</b> | <b>Bachelors degree</b>  | <b>13.8%</b> |   |             |

- Median earnings Corpus Christi by education for persons 25 years of age & up (Census AFF/ACS): **\$27,211** (\$36,380 male/ \$22,328 female)

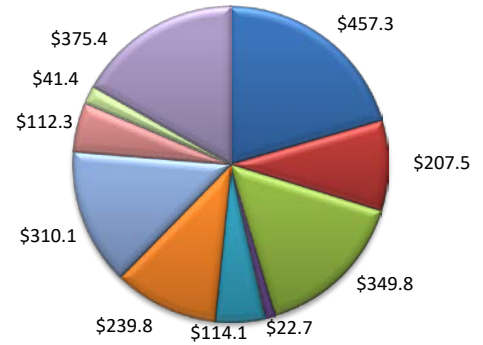
|                              |                 |                                   |                 |                                 |                 |
|------------------------------|-----------------|-----------------------------------|-----------------|---------------------------------|-----------------|
| <b>Less than High School</b> | <b>\$15,437</b> | <b>Some College or Associates</b> | <b>\$28,739</b> | <b>Graduate or Professional</b> | <b>\$56,681</b> |
| <b>High School &amp; GED</b> | <b>\$26,818</b> | <b>Bachelor's</b>                 | <b>\$44,078</b> |                                 |                 |

(Aransas, Nueces, San Patricio)

Industry Composition



Wages by Industry (in millions)  
1st Quarter 2018



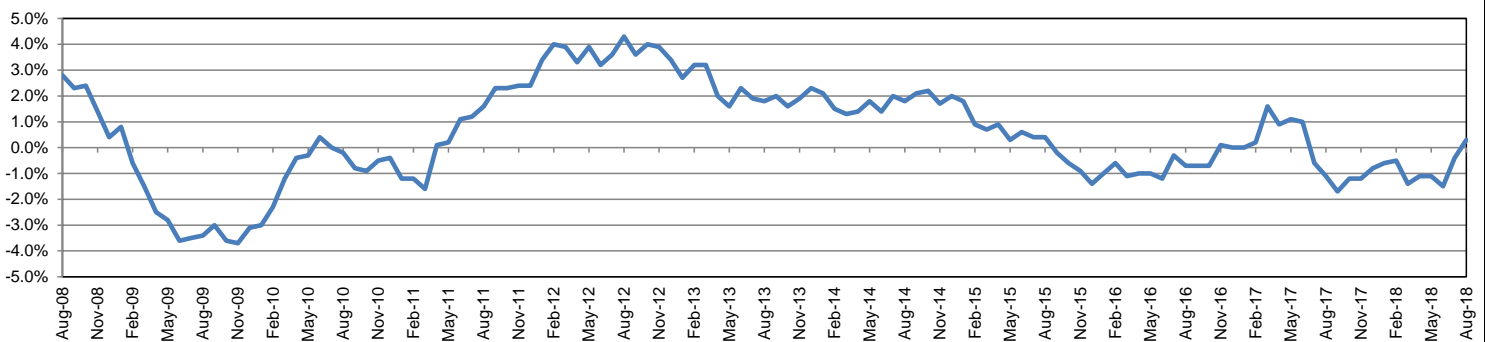
Employment by Industry

|                                      |         |         |         | Monthly Change |       | Annual Change |       |
|--------------------------------------|---------|---------|---------|----------------|-------|---------------|-------|
|                                      | Aug-18  | Jul-18  | Aug-17  | Actual         | %     | Actual        | %     |
|                                      |         |         |         |                |       |               |       |
| Total Nonfarm                        | 191,600 | 190,700 | 191,000 | 900            | 0.5%  | 600           | 0.3%  |
| Mining, Logging and Construction     | 27,400  | 27,000  | 25,700  | 400            | 1.5%  | 1,700         | 6.6%  |
| Manufacturing                        | 8,100   | 8,200   | 8,200   | -100           | -1.2% | -100          | -1.2% |
| Trade, Transportation, and Utilities | 33,200  | 32,900  | 33,500  | 300            | 0.9%  | -300          | -0.9% |
| Information                          | 1,700   | 1,700   | 1,800   | 0              | 0.0%  | -100          | -5.6% |
| Financial Activities                 | 7,900   | 7,900   | 7,900   | 0              | 0.0%  | 0             | 0.0%  |
| Professional and Business Services   | 17,500  | 17,500  | 16,700  | 0              | 0.0%  | 800           | 4.8%  |
| Education and Health Services        | 31,400  | 31,200  | 30,900  | 200            | 0.6%  | 500           | 1.6%  |
| Leisure and Hospitality              | 25,400  | 25,500  | 27,000  | -100           | -0.4% | -1,600        | -5.9% |
| Other Services                       | 6,700   | 6,700   | 6,800   | 0              | 0.0%  | -100          | -1.5% |
| Government                           | 32,300  | 32,100  | 32,500  | 200            | 0.6%  | -200          | -0.6% |

Industry Size Class

| March 2018 |                    |                 |                          |                    |
|------------|--------------------|-----------------|--------------------------|--------------------|
| Size Class | Employees per firm | Number of Firms | Employment in Size Class | % Total Employment |
| 9          | 1000+              | 19              | 46,539                   | 24.8%              |
| 8          | 500-999            | 24              | 16,460                   | 8.8%               |
| 7          | 250-499            | 48              | 16,667                   | 8.9%               |
| 6          | 100-249            | 220             | 32,338                   | 17.2%              |
| 5          | 50-99              | 280             | 19,347                   | 10.3%              |
| 4          | 20-49              | 786             | 24,076                   | 12.8%              |
| 3          | 10-19              | 1,096           | 14,994                   | 8.0%               |
| 2          | 5-9                | 1,496           | 9,826                    | 5.2%               |
| 1          | 1-4                | 3,553           | 7,324                    | 3.9%               |
| 0          | 0                  | 731             | 0                        | 0.0%               |
| Total      |                    | 8,253           | 187,571                  | 100.0%             |

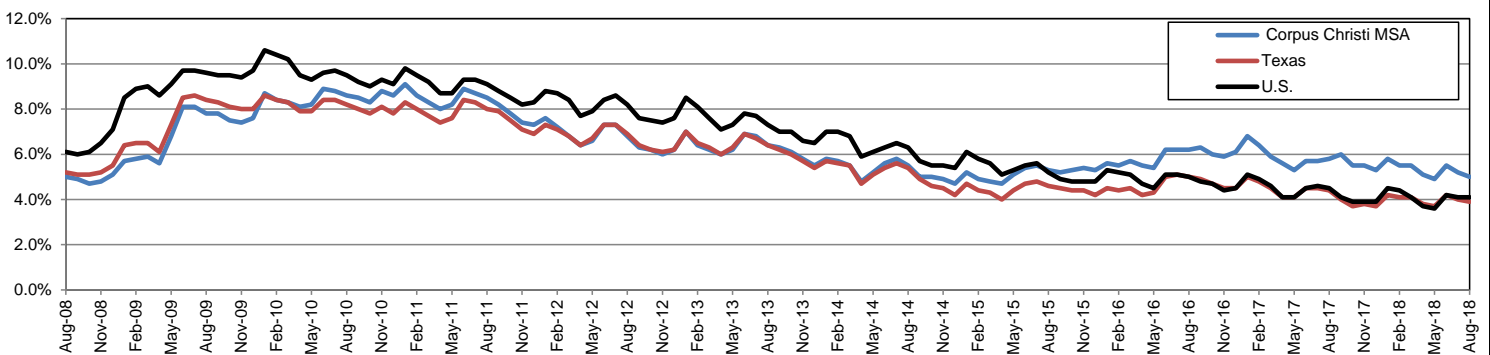
Annual Growth Rate for Total Nonagricultural Employment



Unemployment Information (all estimates in thousands)

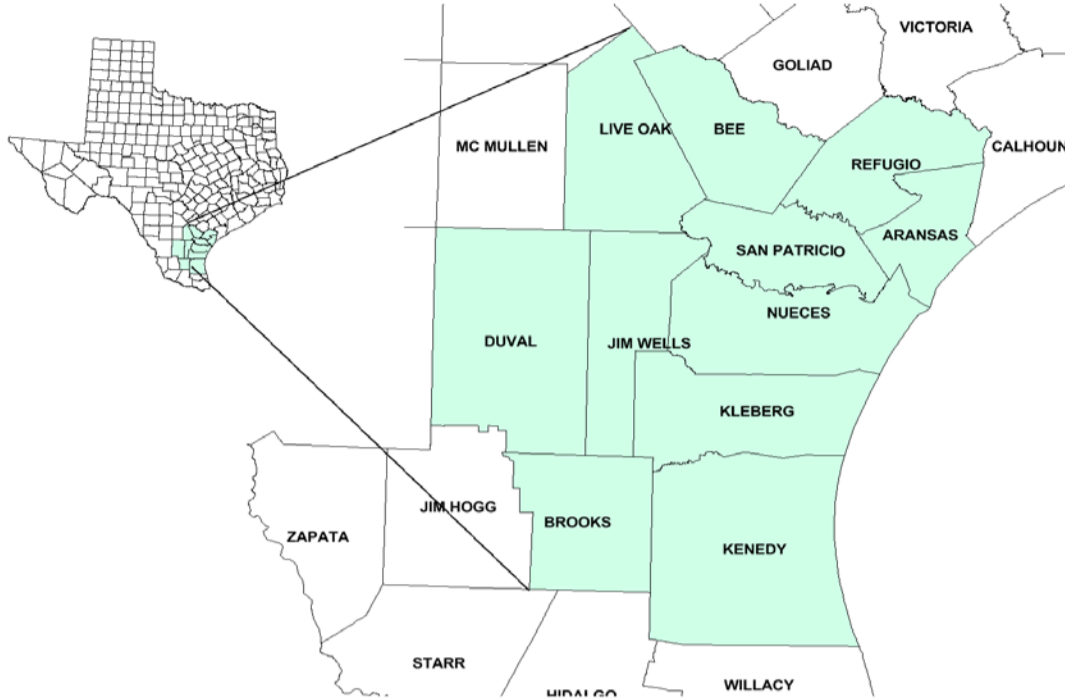
|        | Corpus Christi MSA |       |        |      | Texas (Actual) |          |        |      | United States (Actual) |           |         |      |
|--------|--------------------|-------|--------|------|----------------|----------|--------|------|------------------------|-----------|---------|------|
|        | C.L.F.             | Emp.  | Unemp. | Rate | C.L.F.         | Emp.     | Unemp. | Rate | C.L.F.                 | Emp.      | Unemp.  | Rate |
| Aug-18 | 205.2              | 194.9 | 10.3   | 5.0  | 13,751.9       | 13,212.4 | 539.4  | 3.9  | 161,909.0              | 155,539.0 | 6,370.0 | 3.9  |
| Jul-18 | 206.5              | 195.8 | 10.7   | 5.2  | 13,840.8       | 13,284.2 | 556.6  | 4.0  | 163,734.0              | 157,004.0 | 6,730.0 | 4.1  |
| Aug-17 | 207.0              | 195.0 | 12.0   | 5.8  | 13,522.8       | 12,921.8 | 601.0  | 4.4  | 160,863.0              | 153,576.0 | 7,287.0 | 4.5  |

Historical Unemployment Rates



# Coastal Bend Workforce Development Area

## August 2018



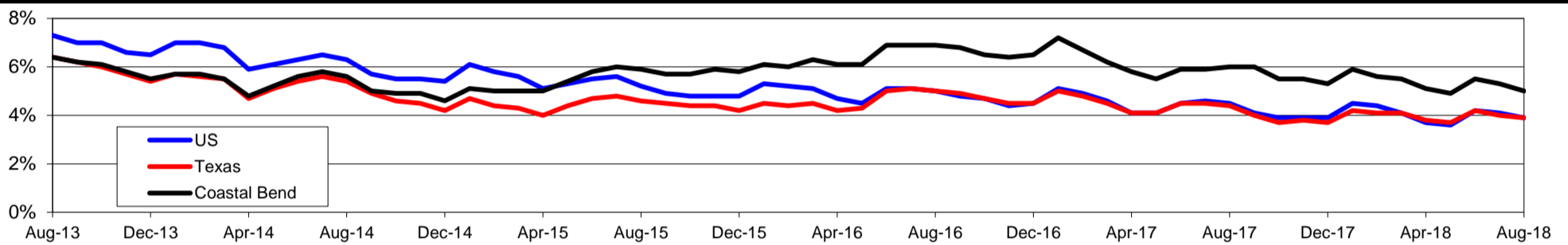
| WDA Labor Force Statistics |         |         |         |        |
|----------------------------|---------|---------|---------|--------|
|                            | Aug-18  | Jul-18  | Aug-17  | OTY    |
| CLF                        | 259,453 | 261,248 | 261,979 | -2,526 |
| Employed                   | 246,383 | 247,495 | 246,256 | 127    |
| Unemployed                 | 13,070  | 13,753  | 15,723  | -2,653 |
| Rate                       | 5.0%    | 5.3%    | 6.0%    | -1.0%  |

| Texas Labor Force Statistics |            |            |            |         |
|------------------------------|------------|------------|------------|---------|
|                              | Aug-18     | Jul-18     | Aug-17     | OTY     |
| CLF                          | 13,751,850 | 13,840,761 | 13,522,840 | 229,010 |
| Employed                     | 13,212,441 | 13,284,157 | 12,921,819 | 290,622 |
| Unemployed                   | 539,409    | 556,604    | 601,021    | -61,612 |
| Rate                         | 3.9%       | 4.0%       | 4.4%       | -0.5%   |

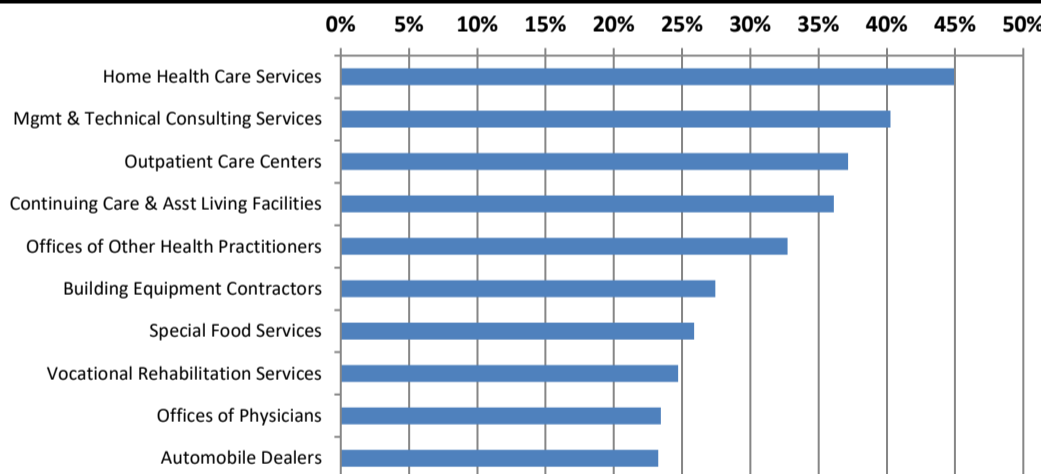
| US Labor Force Statistics |             |             |             |           |
|---------------------------|-------------|-------------|-------------|-----------|
|                           | Aug-18      | Jul-18      | Aug-17      | OTY       |
| CLF                       | 161,909,000 | 163,734,000 | 160,863,000 | 1,046,000 |
| Employed                  | 155,539,000 | 157,004,000 | 153,576,000 | 1,963,000 |
| Unemployed                | 6,370,000   | 6,730,000   | 7,287,000   | -917,000  |
| Rate                      | 3.9%        | 4.1%        | 4.5%        | -0.6%     |

| Continued Claims for the Week of the 12th |        |         |         |         |
|---|--------|---------|---------|---------|
|   | Aug-18 | Jul-18  | Aug-17  | OTY     |
| WDA                                       | 2,167  | 2,511   | 3,215   | -1,048  |
| Texas                                     | 92,234 | 103,518 | 117,088 | -24,854 |

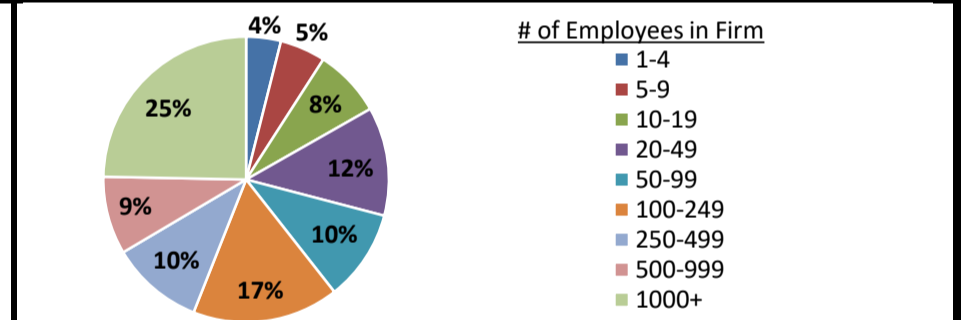
### Historical Unemployment Rates



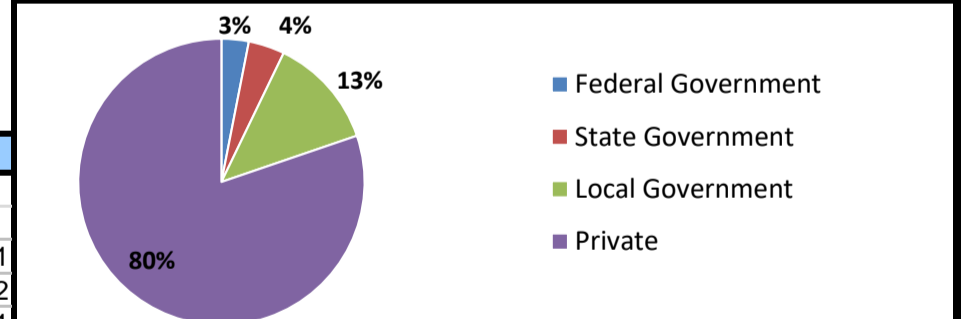
### Projected Fastest Growing Industries in WDA (% growth 2014-2024)



### Employment by Size Class (1st Quarter 2018)



### Employment by Ownership (1st Quarter 2018)



### Average Weekly Wage (1st Quarter 2018)

|       | Q1 2018 | Q4 2017 | Q1 2017 | Change  |      |
|-------|---------|---------|---------|---------|------|
|       |         |         |         | Quarter | Year |
| WDA   | \$900   | \$908   | \$879   | -\$7    | \$21 |
| Texas | \$1,167 | \$1,109 | \$1,124 | \$58    | \$42 |
| US    | \$1,152 | \$1,109 | \$1,111 | \$43    | \$41 |

### Employment by Industry (1st Quarter 2018, Percent Change)

| Industry                            | Employment     | % of total    | % Change     |             |
|-------------------------------------|----------------|---------------|--------------|-------------|
|                                     |                |               | Quarter      | Year        |
| Natural resources and mining        | 10,499         | 4.5%          | -4.6%        | 7.2%        |
| Construction                        | 24,452         | 10.4%         | -1.7%        | -0.9%       |
| Manufacturing                       | 12,332         | 5.2%          | 0.0%         | -1.5%       |
| Trade, transportation and utilities | 42,589         | 18.1%         | -2.4%        | -0.5%       |
| Information                         | 1,976          | 0.8%          | -5.6%        | -7.6%       |
| Financial activities                | 9,672          | 4.1%          | 2.4%         | 4.5%        |
| Professional and business services  | 20,097         | 8.5%          | 3.1%         | 9.2%        |
| Education and health services       | 66,040         | 28.1%         | 1.0%         | -1.0%       |
| Leisure and hospitality             | 30,126         | 12.8%         | 0.6%         | -1.8%       |
| Other services                      | 5,749          | 2.4%          | -0.1%        | -4.3%       |
| Public administration               | 11,819         | 5.0%          | -0.7%        | -1.6%       |
| <b>Total</b>                        | <b>235,351</b> | <b>100.0%</b> | <b>-0.2%</b> | <b>0.2%</b> |

### Employment by Industry (1st Quarter 2018)

