

# Coastal Bend Workforce Area

(Not Seasonally Adjusted Unemployment Rates by WDA, MSA, & County)

Area	Area Type	Latest Monthly Data May 2018						Previous Monthly Data April 2018				Year Ago May 2017			
		Labor Force	Employment	Unemployment	Rate	M+-	Y+-	Labor Force	Employment	Unemployment	Rate	Labor Force	Employment	Unemployment	Rate
United States	Nation	161,539,000	155,474,000	6,065,000	3.8	-0.1	-0.5	161,527,000	155,181,000	6,346,000	3.9	159,729,000	152,892,000	6,837,000	4.3
Texas	State	13,789,284	13,299,609	559,675	4.1	0.0	-0.3	13,750,815	13,192,212	558,603	4.1	13,511,719	12,920,950	590,229	4.4
Corpus Christi	MSA	208,186	197,999	10,187	4.9	-0.2	-0.4	208,630	198,008	10,622	5.1	209,771	198,562	11,209	5.3
Coastal Bend	WDA	264,474	251,422	13,052	4.9	-0.2	-0.6	264,845	251,296	13,549	5.1	266,506	251,721	14,785	5.5
Aransas	County	10,378	9,786	592	5.7	-0.4	0.4	10,412	9,781	631	6.1	10,332	9,788	544	5.3
Bee	County	9,867	9,362	505	5.1	-0.1	-1.1	9,911	9,392	519	5.2	10,109	9,484	625	6.2
Brooks	County	2,506	2,353	153	6.1	-0.2	-1.6	2,502	2,345	157	6.3	2,433	2,245	188	7.7
Duval	County	4,788	4,526	262	5.5	-0.1	-2.2	4,766	4,501	265	5.6	4,847	4,474	373	7.7
Jim Wells	County	16,688	15,767	921	5.5	-0.2	-1.8	16,602	15,654	948	5.7	16,820	15,597	1,223	7.3
Kenedy	County	283	275	8	2.8	0.6	0.1	270	264	6	2.2	256	249	7	2.7
Kleberg	County	13,346	12,679	667	5.0	-0.1	-0.6	13,424	12,740	684	5.1	13,697	12,932	765	5.6
Live Oak	County	5,531	5,334	197	3.6	0.1	-0.9	5,495	5,305	190	3.5	5,387	5,142	245	4.5
Nueces	County	167,367	159,668	7,699	4.6	-0.2	-0.5	167,751	159,741	8,010	4.8	168,612	160,097	8,515	5.1
Refugio	County	3,279	3,127	152	4.6	-0.3	-0.1	3,245	3,087	158	4.9	3,186	3,036	150	4.7
San Patricio	County	30,441	28,545	1,896	6.2	-0.3	-0.8	30,467	28,486	1,981	6.5	30,827	28,677	2,150	7.0

(M+-) Change in unemployment rate from last month (Increase) (Decrease)

(Y+-) Change in unemployment rate from last year (Increase) (Decrease)

- Earnings for all occupations Coastal Bend, expressed as hourly rate (TWC):

<b>Coastal Bend</b>	<b>All Occupations-</b>	<b>Average \$18.35/hr.</b>	<b>Entry level \$8.58/hr.</b>	<b>Experienced workers \$23.24/hr.</b>	<b>Top 10% \$33.56/hr.</b>
<b>Texas</b>	<b>All Occupations-</b>	<b>Average \$20.97/hr.</b>	<b>Entry level \$8.88/hr.</b>	<b>Experienced workers \$ 27.02/hr.</b>	<b>Top 10% \$39.64/hr.</b>

- Educational Attainment for population 25 years of age and older - Corpus Christi (Census American Fact Finder/American Community Survey):

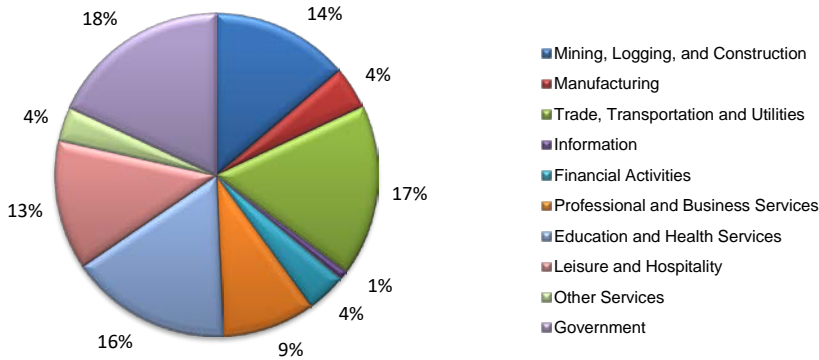
<b>Less than 9<sup>th</sup> grade</b>	<b>8.7%</b>	<b>12<sup>th</sup> grade &amp; GED</b>	<b>27.7%</b>	<b>Associates degree</b>	<b>7.0%</b>	<b>Graduate or Professional degrees</b>	<b>8.4%</b>
<b>9<sup>th</sup> thru 11<sup>th</sup> grade</b>	<b>9.3%</b>	<b>Some College</b>	<b>25.1%</b>	<b>Bachelors degree</b>	<b>13.8%</b>		

- Median earnings Corpus Christi by education for persons 25 years of age & up (Census AFF/ACS): **\$27,211** (\$36,380 male/ \$22,328 female)

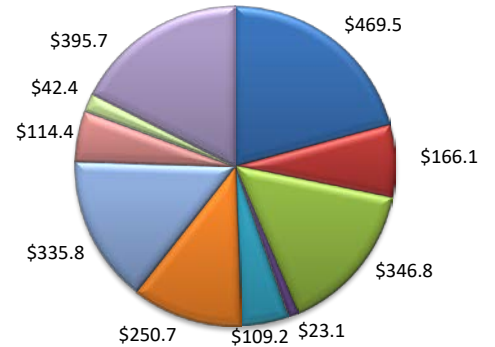
<b>Less than High School</b>	<b>\$15,437</b>	<b>Some College or Associates</b>	<b>\$28,739</b>	<b>Graduate or Professional</b>	<b>\$56,681</b>
<b>High School &amp; GED</b>	<b>\$26,818</b>	<b>Bachelor's</b>	<b>\$44,078</b>		

(Aransas, Nueces, San Patricio)

Industry Composition



Wages by Industry (in millions)  
4th Quarter 2017



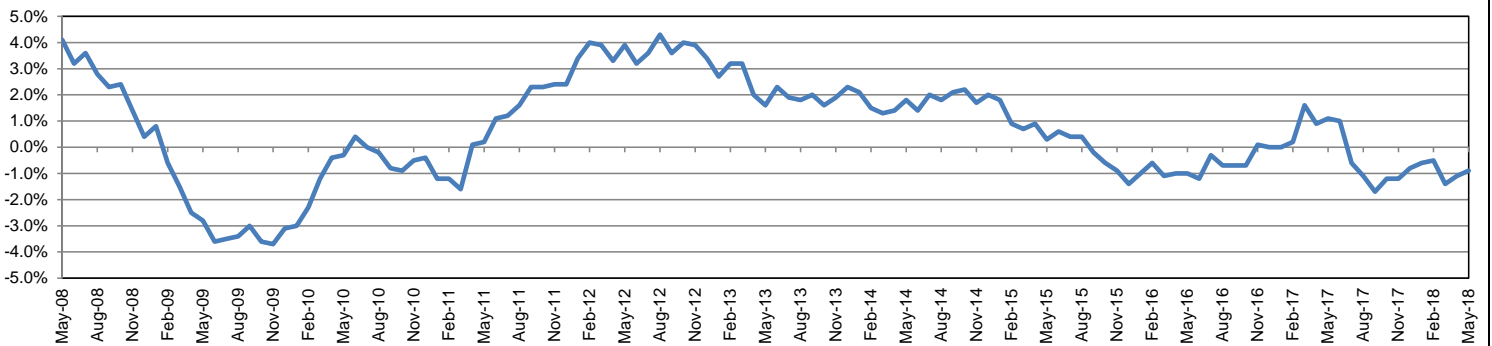
Employment by Industry

				Monthly Change		Annual Change	
	May-18	Apr-18	May-17	Actual	%	Actual	%
Total Nonfarm	193,300	192,000	195,100	1,300	0.7%	-1,800	-0.9%
Mining, Logging and Construction	26,700	26,600	26,600	100	0.4%	100	0.4%
Manufacturing	8,200	8,100	8,200	100	1.2%	0	0.0%
Trade, Transportation, and Utilities	33,000	32,900	33,500	100	0.3%	-500	-1.5%
Information	1,700	1,700	1,800	0	0.0%	-100	-5.6%
Financial Activities	7,800	7,700	7,800	100	1.3%	0	0.0%
Professional and Business Services	18,000	17,800	16,300	200	1.1%	1,700	10.4%
Education and Health Services	31,200	31,100	31,700	100	0.3%	-500	-1.6%
Leisure and Hospitality	25,000	24,600	26,900	400	1.6%	-1,900	-7.1%
Other Services	6,600	6,600	6,800	0	0.0%	-200	-2.9%
Government	35,100	34,900	35,500	200	0.6%	-400	-1.1%

Industry Size Class

Size Class	Employees per firm	Number of Firms	December 2017	
			Employment in Size Class	% Total Employment
9	1000+	21	49,133	26.1%
8	500-999	20	13,820	7.4%
7	250-499	50	17,638	9.4%
6	100-249	224	32,748	17.4%
5	50-99	273	18,945	10.1%
4	20-49	800	24,438	13.0%
3	10-19	1,052	14,272	7.6%
2	5-9	1,448	9,596	5.1%
1	1-4	3,595	7,399	3.9%
0	0	737	0	0.0%
Total		8,220	187,989	100.0%

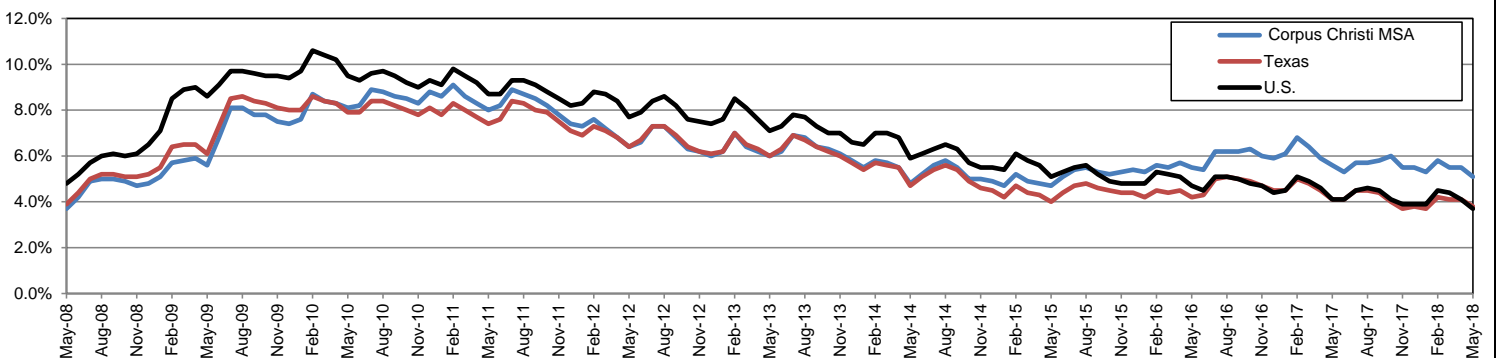
Annual Growth Rate for Total Nonagricultural Employment



Unemployment Information (all estimates in thousands)

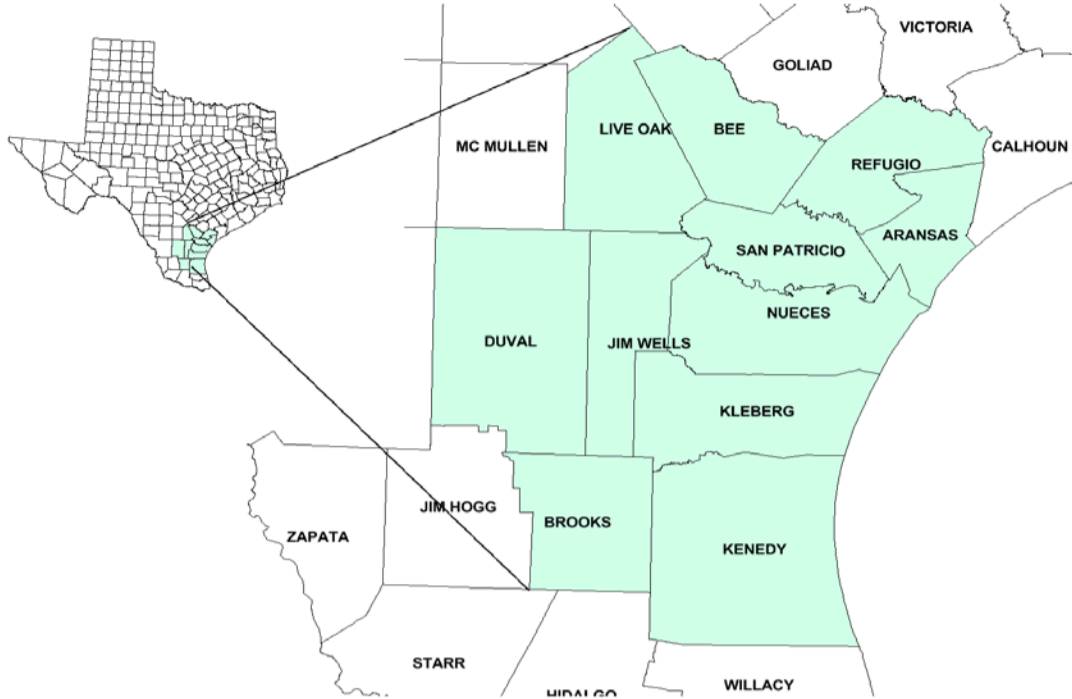
	Corpus Christi MSA				Texas (Actual)				United States (Actual)			
	C.L.F.	Emp.	Unemp.	Rate	C.L.F.	Emp.	Unemp.	Rate	C.L.F.	Emp.	Unemp.	Rate
May-18	208.2	198.0	10.2	4.9	13,836.5	13,321.2	515.2	3.7	161,539.0	55,474.0	6,065.0	3.8
Apr-18	208.6	198.0	10.6	5.1	13,863.1	13,342.5	520.6	3.8	161,527.0	155,181.0	6,346.0	3.9
May-17	209.8	198.6	11.2	5.3	13,498.7	12,940.8	557.9	4.1	159,979.0	153,407.0	6,572.0	4.1

Historical Unemployment Rates



# Coastal Bend Workforce Development Area

May 2018



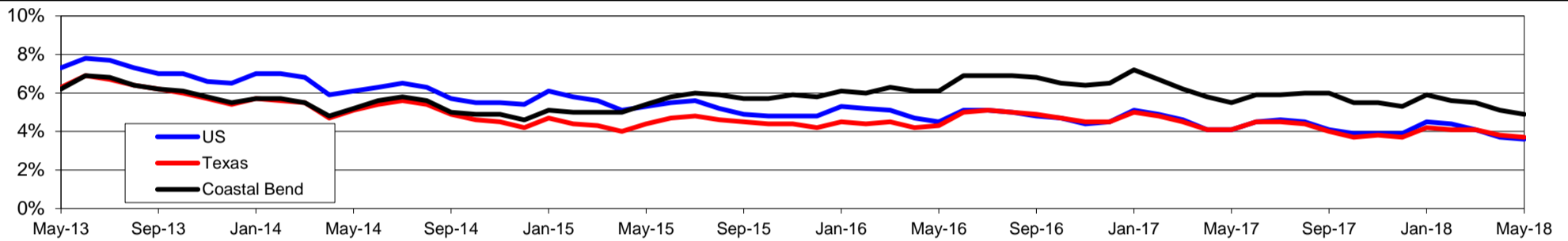
WDA Labor Force Statistics				
	May-18	Apr-18	May-17	OTY
CLF	264,474	264,845	266,506	-2,032
Employed	251,422	251,296	251,721	-299
Unemployed	13,052	13,549	14,785	-1,733
Rate	4.9%	5.1%	5.5%	-0.6%

Texas Labor Force Statistics				
	May-18	Apr-18	May-17	OTY
CLF	13,836,477	13,863,075	13,498,726	337,751
Employed	13,321,229	13,342,454	12,940,819	380,410
Unemployed	515,248	520,621	557,907	-42,659
Rate	3.7%	3.8%	4.1%	-0.4%

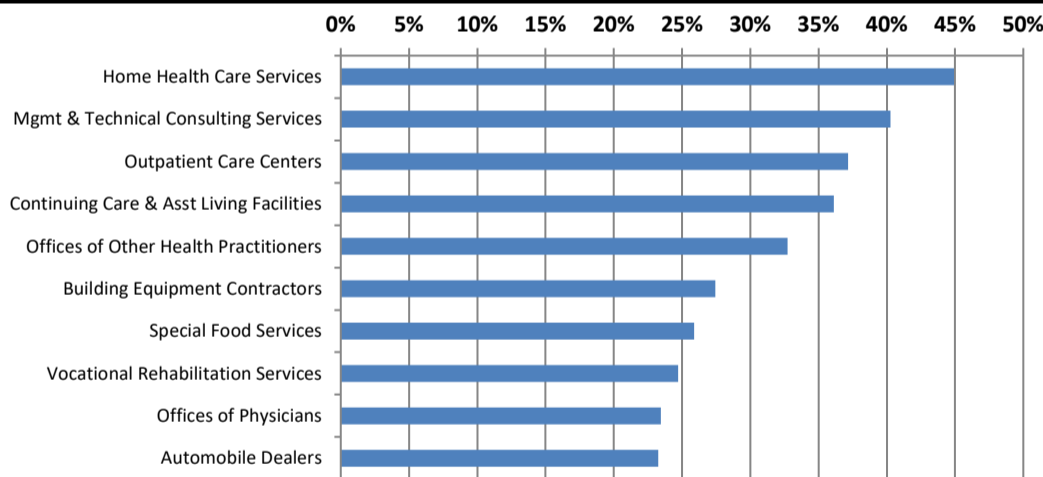
US Labor Force Statistics				
	May-18	Apr-18	May-17	OTY
CLF	161,765,000	161,280,000	159,979,000	1,786,000
Employed	156,009,000	155,348,000	153,407,000	2,602,000
Unemployed	5,756,000	5,932,000	6,572,000	-816,000
Rate	3.6%	3.7%	4.1%	-0.5%

Continued Claims for the Week of the 12th				
	May-18	Apr-18	May-17	OTY
WDA	2,235	2,424	3,108	-873
Texas	93,184	96,035	113,603	-20,419

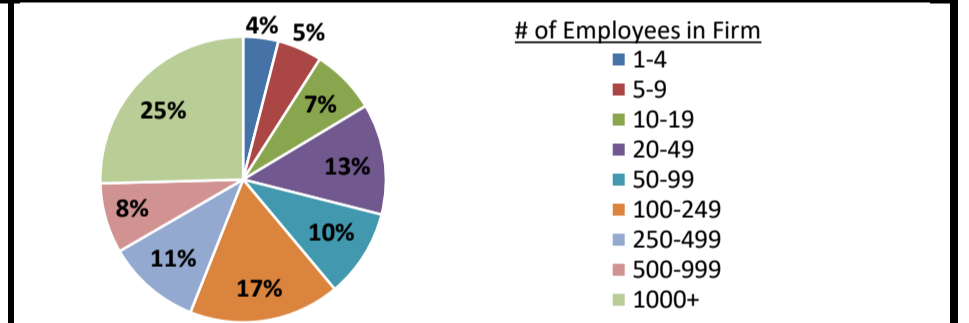
## Historical Unemployment Rates



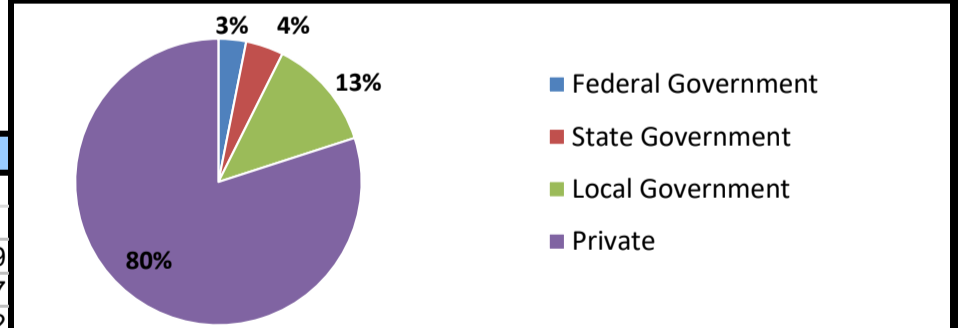
## Projected Fastest Growing Industries in WDA (% growth 2014-2024)



## Employment by Size Class (4th Quarter 2017)



## Employment by Ownership (4th Quarter 2017)



## Average Weekly Wage (4th Quarter 2017)

	Q4 2017	Q3 2017	Q4 2016	Change	
				Quarter	Year
WDA	\$908	\$860	\$869	\$48	\$39
Texas	\$1,109	\$1,032	\$1,072	\$77	\$37
US	\$1,065	\$1,020	\$1,067	\$45	-\$2

## Employment by Industry (4th Quarter 2017, Percent Change)

Industry	Employment	% of total	% Change	
			Quarter	Year
Natural resources and mining	11,003	4.7%	-2.4%	15.5%
Construction	24,889	10.6%	5.3%	-0.6%
Manufacturing	12,348	5.2%	-0.3%	-2.1%
Trade, transportation and utilities	43,520	18.5%	1.3%	-1.6%
Information	2,100	0.9%	0.8%	-1.7%
Financial activities	9,423	4.0%	-0.7%	1.5%
Professional and business services	19,480	8.3%	2.9%	7.0%
Education and health services	65,470	27.8%	5.0%	-3.0%
Leisure and hospitality	29,944	12.7%	-7.0%	-2.2%
Other services	5,728	2.4%	-5.0%	-8.3%
Public administration	11,886	5.0%	-1.0%	-2.3%
<b>Total</b>	<b>235,791</b>	<b>100.0%</b>	<b>1.0%</b>	<b>-0.7%</b>

## Employment by Industry (4th Quarter 2017)

