

Coastal Bend Workforce Area

(Not Seasonally Adjusted Unemployment Rates by WDA, MSA, & County)

Area	Area Type	Latest Monthly Data March 2018						Previous Monthly Data February 2018				Year Ago March 2017			
		Labor Force	Employment	Unemployment	Rate	M+-	Y+-	Labor Force	Employment	Unemployment	Rate	Labor Force	Employment	Unemployment	Rate
United States	Nation	161,763,000	155,178,000	6,585,000	4.1	0.0	-0.4	161,921,000	155,215,000	6,706,000	4.1	160,235,000	153,064,000	7,171,000	4.5
Texas	State	13,702,621	13,150,270	552,351	4.0	0.0	-0.6	13,656,938	13,112,824	544,114	4.0	13,490,959	12,865,522	625,437	4.6
Corpus Christi	MSA	209,764	198,252	11,512	5.5	0.0	-0.4	208,910	197,331	11,579	5.5	211,751	199,277	12,474	5.9
Coastal Bend	WDA	265,770	251,077	14,693	5.5	-0.1	-0.7	264,363	249,577	14,786	5.6	269,016	252,433	16,583	6.2
Aransas	County	10,527	9,816	711	6.8	-0.3	0.9	10,456	9,716	740	7.1	10,441	9,824	617	5.9
Bee	County	9,903	9,340	563	5.7	-0.1	-1.1	9,851	9,282	569	5.8	10,224	9,530	694	6.8
Brooks	County	2,477	2,294	183	7.4	0.2	-1.9	2,437	2,261	176	7.2	2,486	2,254	232	9.3
Duval	County	4,806	4,519	287	6.0	0.0	-3.0	4,802	4,512	290	6.0	4,884	4,444	440	9.0
Jim Wells	County	16,755	15,710	1,045	6.2	-0.2	-2.3	16,614	15,549	1,065	6.4	16,981	15,544	1,437	8.5
Kenedy	County	283	273	10	3.5	0.1	-0.9	268	259	9	3.4	251	240	11	4.4
Kleberg	County	13,356	12,647	709	5.3	-0.1	-0.9	13,124	12,420	704	5.4	13,941	13,073	868	6.2
Live Oak	County	5,417	5,201	216	4.0	-0.1	-0.9	5,391	5,170	221	4.1	5,287	5,026	261	4.9
Nueces	County	168,517	159,876	8,641	5.1	0.0	-0.4	167,812	159,233	8,579	5.1	170,091	160,666	9,425	5.5
Refugio	County	3,009	2,841	168	5.6	-0.2	0.4	2,966	2,793	173	5.8	3,211	3,045	166	5.2
San Patricio	County	30,720	28,560	2,160	7.0	-0.4	-0.8	30,642	28,382	2,260	7.4	31,219	28,787	2,432	7.8

(M+-) Change in unemployment rate from last month (Increase) (Decrease)

(Y+-) Change in unemployment rate from last year (Increase) (Decrease)

- Earnings for all occupations Coastal Bend, expressed as hourly rate (TWC):

Coastal Bend	All Occupations-	Average \$18.35/hr.	Entry level \$8.58/hr.	Experienced workers \$23.24/hr.	Top 10% \$33.56/hr.
Texas	All Occupations-	Average \$20.97/hr.	Entry level \$8.88/hr.	Experienced workers \$ 27.02/hr.	Top 10% \$39.64/hr.

- Educational Attainment for population 25 years of age and older - Corpus Christi (Census American Fact Finder/American Community Survey):

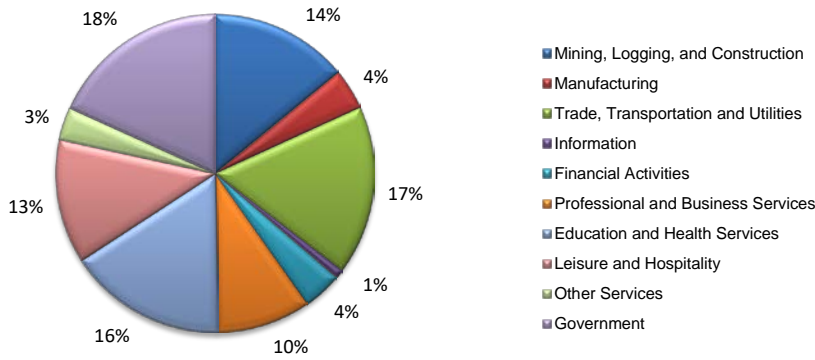
Less than 9th grade	8.7%	12th grade & GED	27.7%	Associates degree	7.0%	Graduate or Professional degrees	8.4%
9th thru 11th grade	9.3%	Some College	25.1%	Bachelors degree	13.8%		

- Median earnings Corpus Christi by education for persons 25 years of age & up (Census AFF/ACS): **\$27,211** (\$36,380 male/ \$22,328 female)

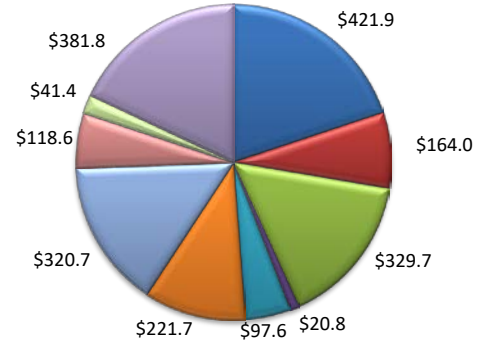
Less than High School	\$15,437	Some College or Associates	\$28,739	Graduate or Professional	\$56,681
High School & GED	\$26,818	Bachelor's	\$44,078		

(Aransas, Nueces, San Patricio)

Industry Composition



Wages by Industry (in millions)
3rd Quarter 2017



Employment by Industry

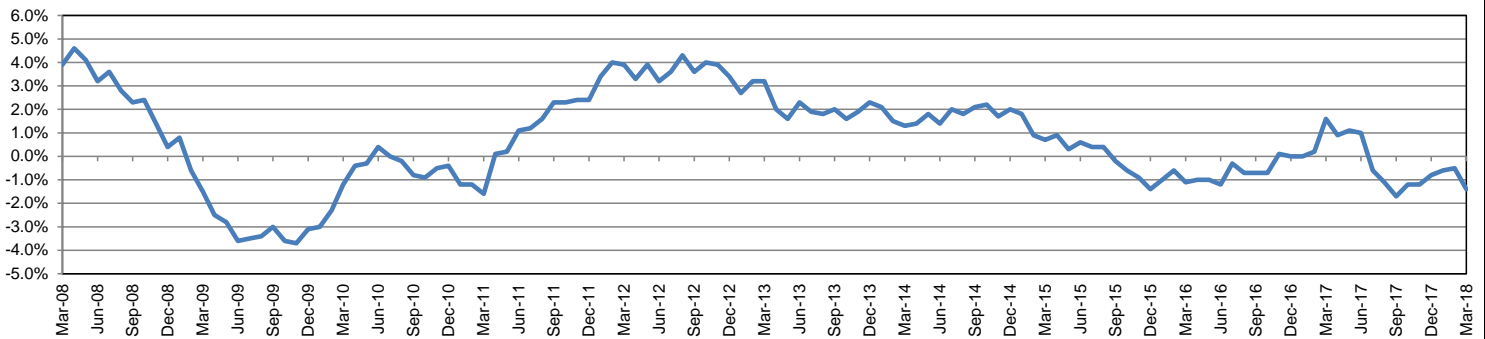
	Mar-18	Feb-18	Mar-17	Monthly Change		Annual Change	
				Actual	%	Actual	%
Total Nonfarm	192,300	191,300	195,100	1,000	0.5%	-2,800	-1.4%
Mining, Logging and Construction	27,000	27,000	27,600	0	0.0%	-600	-2.2%
Manufacturing	8,000	8,100	8,200	-100	-1.2%	-200	-2.4%
Trade, Transportation, and Utilities	33,000	32,500	33,400	500	1.5%	-400	-1.2%
Information	1,700	1,700	1,800	0	0.0%	-100	-5.6%
Financial Activities	7,700	7,700	7,800	0	0.0%	-100	-1.3%
Professional and Business Services	18,200	18,300	16,700	-100	-0.5%	1,500	9.0%
Education and Health Services	31,000	31,000	31,400	0	0.0%	-400	-1.3%
Leisure and Hospitality	24,200	23,700	26,200	500	2.1%	-2,000	-7.6%
Other Services	6,400	6,400	6,600	0	0.0%	-200	-3.0%
Government	35,100	34,900	35,400	200	0.6%	-300	-0.8%

Industry Size Class

September 2017

Size Class	Employees per firm	Number of Firms	Employment in Size Class	% Total Employment
9	1000+	20	46,101	25.0%
8	500-999	21	13,910	7.6%
7	250-499	50	16,864	9.2%
6	100-249	213	31,427	17.1%
5	50-99	285	19,992	10.9%
4	20-49	782	24,075	13.1%
3	10-19	1,069	14,739	8.0%
2	5-9	1,487	9,808	5.3%
1	1-4	3,484	7,165	3.9%
0	0	844	0	0.0%
Total		8,255	184,081	100.0%

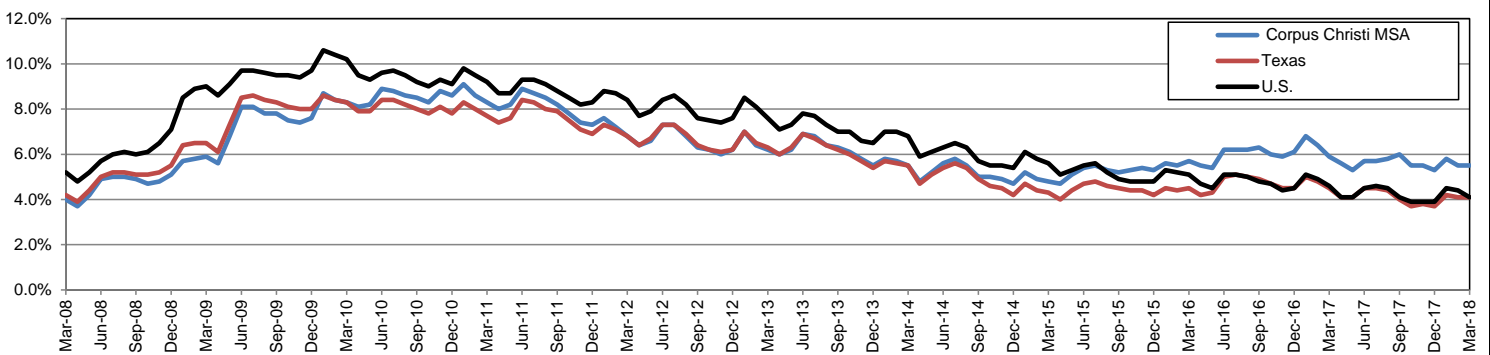
Annual Growth Rate for Total Nonagricultural Employment



Unemployment Information (all estimates in thousands)

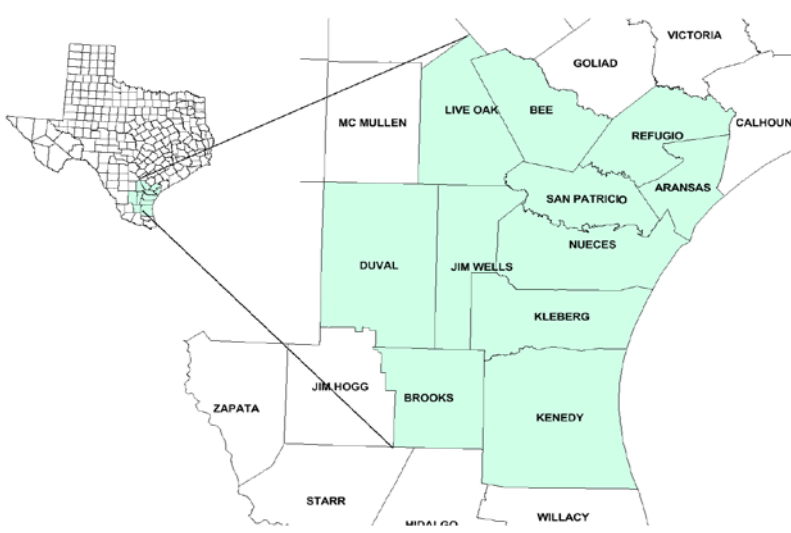
	Corpus Christi MSA				Texas (Actual)				United States (Actual)			
	C.L.F.	Emp.	Unemp.	Rate	C.L.F.	Emp.	Unemp.	Rate	C.L.F.	Emp.	Unemp.	Rate
Mar-18	209.8	198.3	11.5	5.5	13,834.8	13,265.3	569.4	4.1	161,548.0	154,877.0	6,671.0	4.1
Feb-18	208.9	197.3	11.6	5.5	13,810.9	13,240.9	570.0	4.1	161,494.0	154,403.0	7,091.0	4.4
Mar-17	211.8	199.3	12.5	5.9	13,517.7	12,904.4	613.3	4.5	159,912.0	152,628.0	7,284.0	4.6

Historical Unemployment Rates



Coastal Bend Workforce Development Area

March 2018



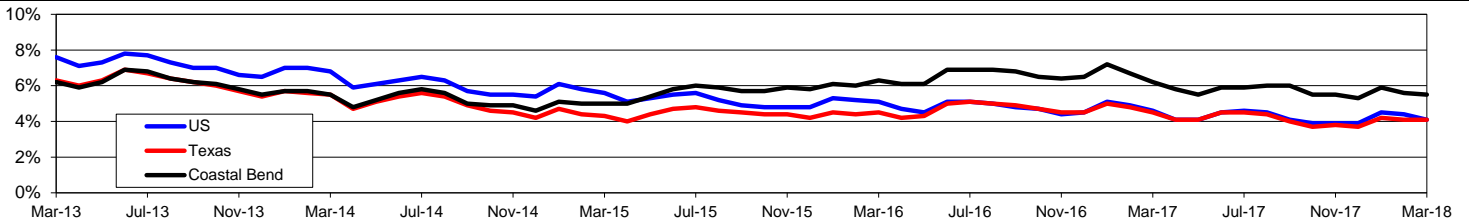
WDA Labor Force Statistics				
	Mar-18	Feb-18	Mar-17	OTY
CLF	265,770	264,363	269,016	-3,246
Employed	251,077	249,577	252,433	-1,356
Unemployed	14,693	14,786	16,583	-1,890
Rate	5.5%	5.6%	6.2%	-0.7%

Texas Labor Force Statistics				
	Mar-18	Feb-18	Mar-17	OTY
CLF	13,834,783	13,810,899	13,517,746	317,037
Employed	13,265,346	13,240,944	12,904,419	360,927
Unemployed	569,437	569,955	613,327	-43,890
Rate	4.1%	4.1%	4.5%	-0.4%

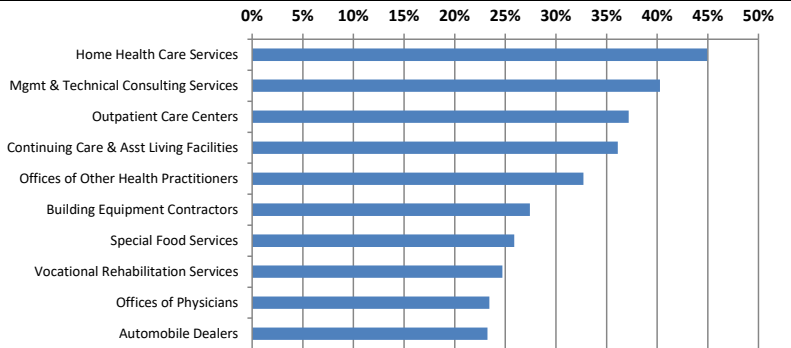
US Labor Force Statistics				
	Mar-18	Feb-18	Mar-17	OTY
CLF	161,548,000	161,494,000	159,912,000	1,636,000
Employed	154,877,000	154,403,000	152,628,000	2,249,000
Unemployed	6,671,000	7,091,000	7,284,000	-613,000
Rate	4.1%	4.4%	4.6%	-0.5%

Continued Claims for the Week of the 12th				
	Mar-18	Feb-18	Mar-17	OTY
WDA	2,599	2,742	3,539	-940
Texas	101,803	104,413	122,322	-20,519

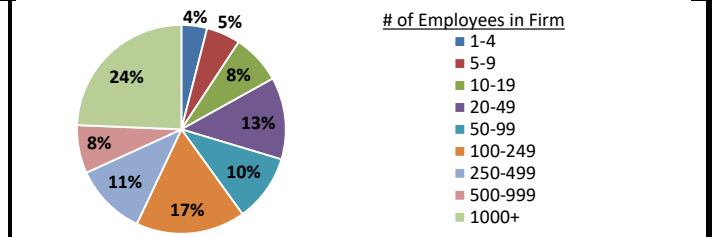
Historical Unemployment Rates



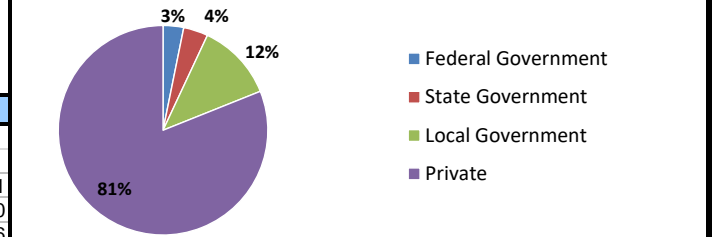
Projected Fastest Growing Industries in WDA (% growth 2014-2024)



Employment by Size Class (3rd Quarter 2017)



Employment by Ownership (3rd Quarter 2017)



Average Weekly Wage (3rd Quarter 2017)

	Q3 2017	Q2 2017	Q3 2016	Change	
				Quarter	Year
WDA	\$860	\$837	\$861	\$23	-\$1
Texas	\$1,032	\$1,027	\$1,042	\$5	-\$10
US	\$1,021	\$1,020	\$1,027	\$1	-\$6

Employment by Industry (3rd Quarter 2017, Percent Change)

Industry	Employment	% of total	% Change	
			Quarter	Year
Natural resources and mining	11,271	4.8%	7.4%	19.7%
Construction	23,619	10.1%	-4.3%	-3.5%
Manufacturing	12,384	5.3%	0.0%	-4.5%
Trade, transportation and utilities	43,000	18.4%	-0.2%	-2.2%
Information	2,080	0.9%	-1.9%	-5.5%
Financial activities	9,487	4.1%	0.6%	1.2%
Professional and business services	18,908	8.1%	2.6%	4.0%
Education and health services	62,433	26.8%	-6.5%	-2.5%
Leisure and hospitality	32,132	13.8%	-1.8%	-1.2%
Other services	6,030	2.6%	-1.7%	-7.0%
Public administration	12,015	5.1%	-0.1%	-0.2%
Total	233,359	100.0%	-2.1%	-1.0%

Employment by Industry (3rd Quarter 2017)

