

Coastal Bend Workforce Area

(Not Seasonally Adjusted Unemployment Rates by WDA, MSA, & County)

Area	Area Type	Latest Monthly Data June 2018						Previous Monthly Data May 2018				Year Ago June 2017			
		Labor Force	Employment	Unemployment	Rate	M+-	Y+-	Labor Force	Employment	Unemployment	Rate	Labor Force	Employment	Unemployment	Rate
United States	Nation	162,140,000	155,576,000	6,564,000	4.0	0.2	-0.3	161,539,000	155,474,000	6,065,000	3.8	160,214,000	153,250,000	6,964,000	4.3
Texas	State	13,813,450	13,255,675	557,775	4.0	-0.1	-0.2	13,788,872	13,229,219	559,653	4.1	13,521,702	12,949,702	572,000	4.2
Corpus Christi	MSA	207,072	195,755	11,317	5.5	0.6	-0.2	207,855	197,684	10,171	4.9	209,834	197,907	11,927	5.7
Coastal Bend	WDA	262,891	248,371	14,520	5.5	0.6	-0.4	264,130	251,093	13,037	4.9	266,296	250,556	15,740	5.9
Aransas	County	10,272	9,653	619	6.0	0.3	0.6	10,363	9,772	591	5.7	10,315	9,758	557	5.4
Bee	County	9,693	9,148	545	5.6	0.5	-0.8	9,867	9,361	506	5.1	9,990	9,352	638	6.4
Brooks	County	2,513	2,328	185	7.4	1.3	-1.6	2,506	2,353	153	6.1	2,444	2,225	219	9.0
Duval	County	4,795	4,495	300	6.3	0.8	-1.5	4,787	4,525	262	5.5	4,847	4,471	376	7.8
Jim Wells	County	16,857	15,825	1,032	6.1	0.6	-1.5	16,681	15,761	920	5.5	17,003	15,714	1,289	7.6
Kenedy	County	277	267	10	3.6	0.8	0.8	283	275	8	2.8	249	242	7	2.8
Kleberg	County	12,859	12,115	744	5.8	0.8	-0.7	13,343	12,675	668	5.0	13,256	12,398	858	6.5
Live Oak	County	5,588	5,369	219	3.9	0.3	-0.8	5,530	5,333	197	3.6	5,522	5,263	259	4.7
Nueces	County	166,488	157,897	8,591	5.2	0.6	-0.2	167,102	159,413	7,689	4.6	168,734	159,610	9,124	5.4
Refugio	County	3,237	3,069	168	5.2	0.6	-0.1	3,278	3,126	152	4.6	3,151	2,984	167	5.3
San Patricio	County	30,312	28,205	2,107	7.0	0.8	-0.3	30,390	28,499	1,891	6.2	30,785	28,539	2,246	7.3

(M+-) Change in unemployment rate from last month (Increase) (Decrease)

(Y+-) Change in unemployment rate from last year (Increase) (Decrease)

- Earnings for all occupations Coastal Bend, expressed as hourly rate (TWC):

Coastal Bend	All Occupations-	Average \$18.35/hr.	Entry level \$8.58/hr.	Experienced workers \$23.24/hr.	Top 10% \$33.56/hr.
Texas	All Occupations-	Average \$20.97/hr.	Entry level \$8.88/hr.	Experienced workers \$ 27.02/hr.	Top 10% \$39.64/hr.

- Educational Attainment for population 25 years of age and older - Corpus Christi (Census American Fact Finder/American Community Survey):

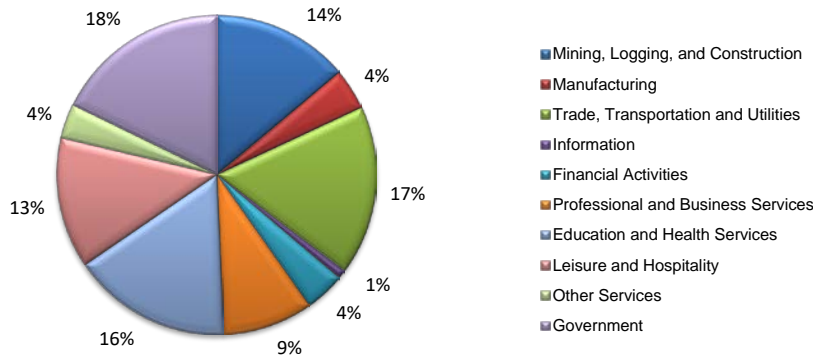
Less than 9th grade	8.7%	12th grade & GED	27.7%	Associates degree	7.0%	Graduate or Professional degrees	8.4%
9th thru 11th grade	9.3%	Some College	25.1%	Bachelors degree	13.8%		

- Median earnings Corpus Christi by education for persons 25 years of age & up (Census AFF/ACS): **\$27,211** (\$36,380 male/ \$22,328 female)

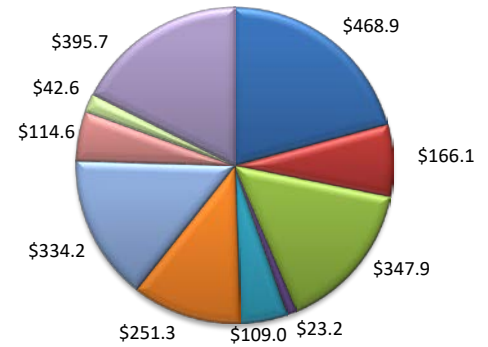
Less than High School	\$15,437	Some College or Associates	\$28,739	Graduate or Professional	\$56,681
High School & GED	\$26,818	Bachelor's	\$44,078		

(Aransas, Nueces, San Patricio)

Industry Composition



Wages by Industry (in millions)
4th Quarter 2017



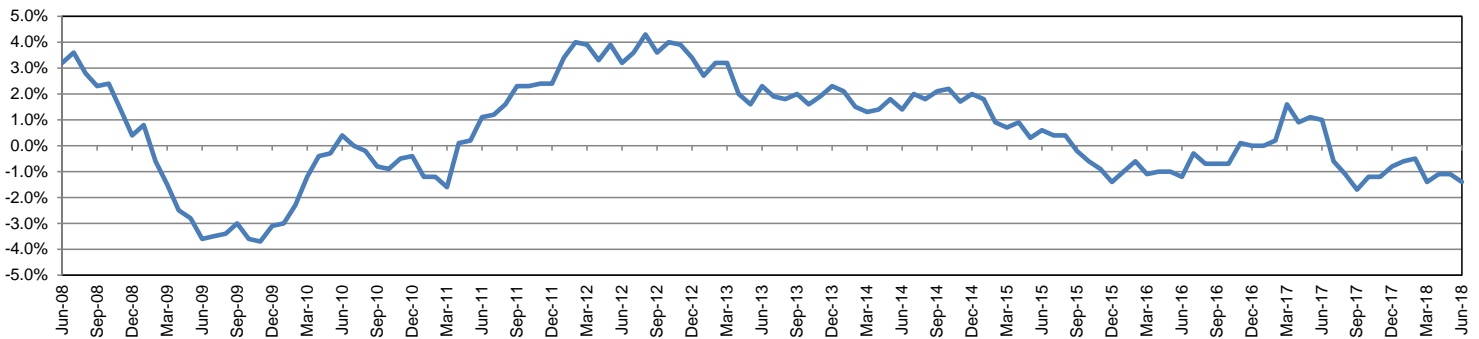
Employment by Industry

				Monthly Change		Annual Change	
	Jun-18	May-18	Jun-17	Actual	%	Actual	%
Total Nonfarm	192,400	192,900	195,200	-500	-0.3%	-2,800	-1.4%
Mining, Logging and Construction	26,700	26,700	26,800	0	0.0%	-100	-0.4%
Manufacturing	8,100	8,200	8,200	-100	-1.2%	-100	-1.2%
Trade, Transportation, and Utilities	33,000	33,000	33,700	0	0.0%	-700	-2.1%
Information	1,700	1,700	1,800	0	0.0%	-100	-5.6%
Financial Activities	7,900	7,800	7,800	100	1.3%	100	1.3%
Professional and Business Services	17,500	17,600	16,500	-100	-0.6%	1,000	6.1%
Education and Health Services	31,100	31,200	31,700	-100	-0.3%	-600	-1.9%
Leisure and Hospitality	25,400	25,000	27,300	400	1.6%	-1,900	-7.0%
Other Services	6,800	6,600	7,000	200	3.0%	-200	-2.9%
Government	34,200	35,100	34,400	-900	-2.6%	-200	-0.6%

Industry Size Class

Size Class	Employees per firm	Number of Firms	December 2017	
			Employment in Size Class	% Total Employment
9	1000+	21	49,061	26.1%
8	500-999	20	13,820	7.4%
7	250-499	51	17,881	9.5%
6	100-249	222	32,363	17.2%
5	50-99	274	19,048	10.1%
4	20-49	798	24,353	13.0%
3	10-19	1,056	14,328	7.6%
2	5-9	1,452	9,630	5.1%
1	1-4	3,624	7,467	4.0%
0	0	729	0	0.0%
Total		8,247	187,951	100.0%

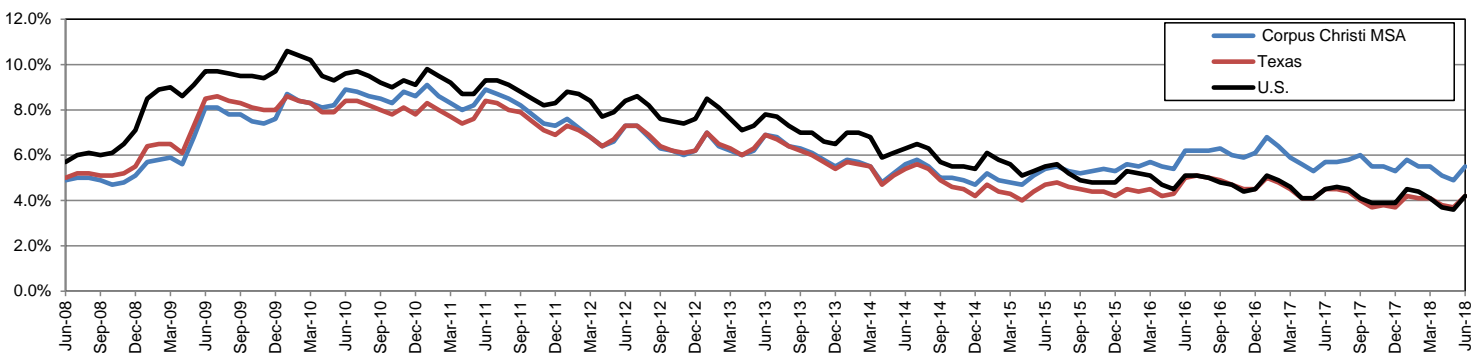
Annual Growth Rate for Total Nonagricultural Employment



Unemployment Information (all estimates in thousands)

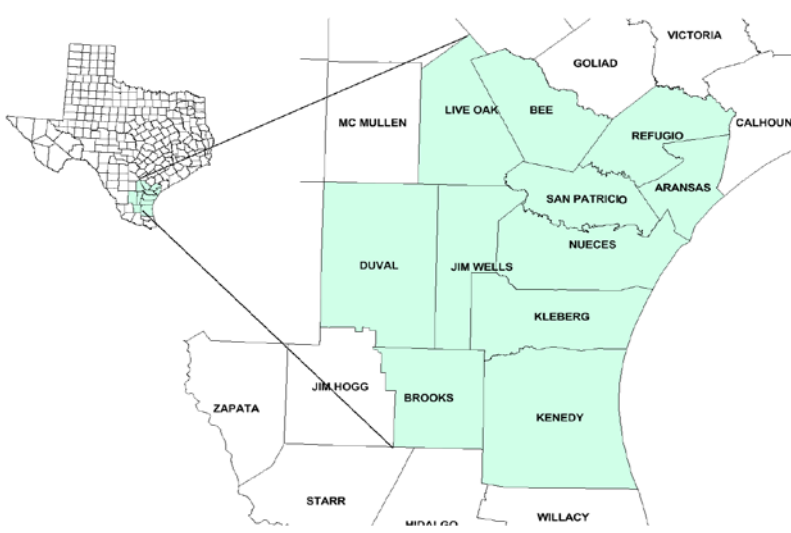
	Corpus Christi MSA				Texas (Actual)				United States (Actual)			
	C.L.F.	Emp.	Unemp.	Rate	C.L.F.	Emp.	Unemp.	Rate	C.L.F.	Emp.	Unemp.	Rate
Jun-18	207.1	195.8	11.3	5.5	13,845.5	13,262.6	582.9	4.2	163,277.0	156,465.0	6,812.0	4.2
May-18	207.9	197.7	10.2	4.9	13,834.3	13,319.1	515.1	3.7	161,765.0	156,009.0	5,756.0	3.6
Jun-17	209.8	197.9	11.9	5.7	13,543.4	12,935.1	608.3	4.5	161,337.0	154,086.0	7,250.0	4.5

Historical Unemployment Rates



Coastal Bend Workforce Development Area

June 2018



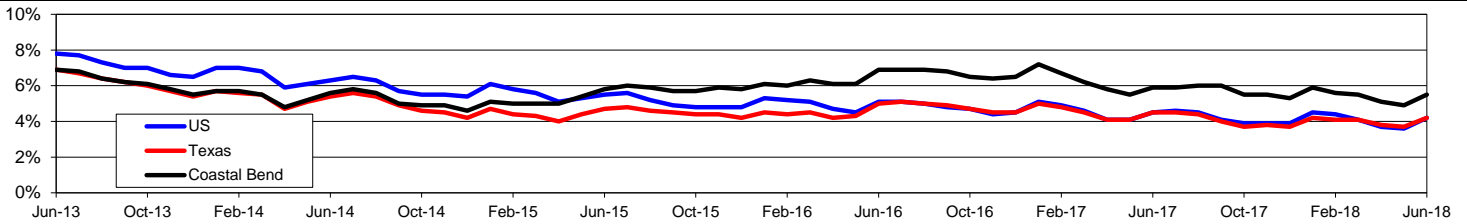
WDA Labor Force Statistics				
	Jun-18	May-18	Jun-17	OTY
CLF	262,891	264,130	266,296	-3,405
Employed	248,371	251,093	250,556	-2,185
Unemployed	14,520	13,037	15,740	-1,220
Rate	5.5%	4.9%	5.9%	-0.4%

Texas Labor Force Statistics				
	Jun-18	May-18	Jun-17	OTY
CLF	13,845,515	13,834,278	13,543,364	302,151
Employed	13,262,576	13,319,148	12,935,054	327,522
Unemployed	582,939	515,130	608,310	-25,371
Rate	4.2%	3.7%	4.5%	-0.3%

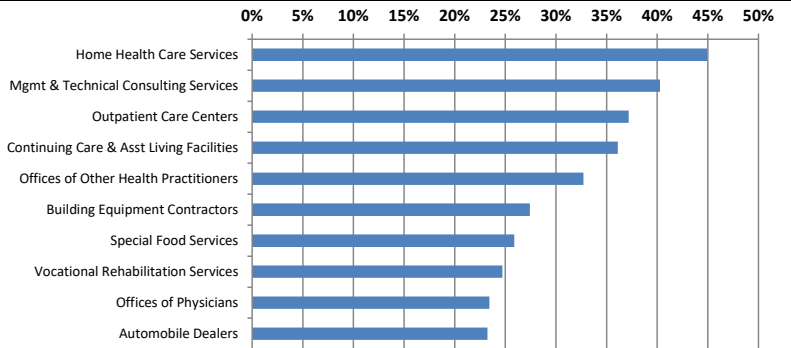
US Labor Force Statistics				
	Jun-18	May-18	Jun-17	OTY
CLF	163,277,000	161,765,000	161,337,000	1,940,000
Employed	156,465,000	156,009,000	154,086,000	2,379,000
Unemployed	6,812,000	5,756,000	7,250,000	-438,000
Rate	4.2%	3.6%	4.5%	-0.3%

Continued Claims for the Week of the 12th				
	Jun-18	May-18	Jun-17	OTY
WDA	2,450	2,246	3,263	-813
Texas	100,206	94,058	124,197	-23,991

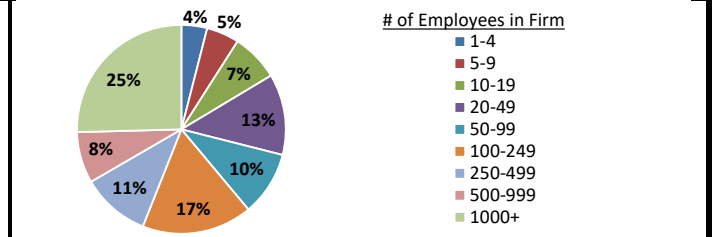
Historical Unemployment Rates



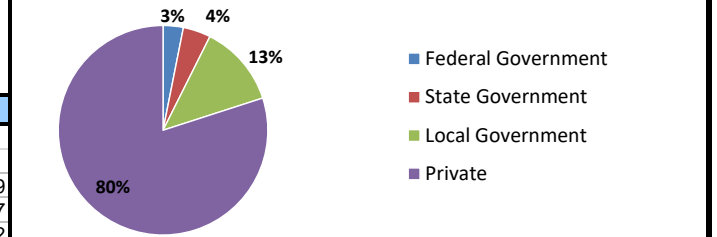
Projected Fastest Growing Industries in WDA (% growth 2014-2024)



Employment by Size Class (4th Quarter 2017)



Employment by Ownership (4th Quarter 2017)



Average Weekly Wage (4th Quarter 2017)

	Q4 2017	Q3 2017	Q4 2016	Change	
				Quarter	Year
WDA	\$908	\$860	\$869	\$48	\$39
Texas	\$1,109	\$1,032	\$1,072	\$77	\$37
US	\$1,065	\$1,020	\$1,067	\$45	-\$2

Employment by Industry (4th Quarter 2017, Percent Change)

Industry	Employment	% of total	% Change	
			Quarter	Year
Natural resources and mining	11,003	4.7%	-2.4%	15.5%
Construction	24,889	10.6%	5.3%	-0.6%
Manufacturing	12,348	5.2%	-0.3%	-2.1%
Trade, transportation and utilities	43,520	18.5%	1.3%	-1.6%
Information	2,100	0.9%	0.8%	-1.7%
Financial activities	9,423	4.0%	-0.7%	1.5%
Professional and business services	19,480	8.3%	2.9%	7.0%
Education and health services	65,470	27.8%	5.0%	-3.0%
Leisure and hospitality	29,944	12.7%	-7.0%	-2.2%
Other services	5,728	2.4%	-5.0%	-8.3%
Public administration	11,886	5.0%	-1.0%	-2.3%
Total	235,791	100.0%	1.0%	-0.7%

Employment by Industry (4th Quarter 2017)

