

Coastal Bend Workforce Area

(Not Seasonally Adjusted Unemployment Rates by WDA, MSA, & County)

Area	Area Type	Latest Monthly Data February 2018						Previous Monthly Data January 2018				Year Ago February 2017			
		Labor Force	Employment	Unemployment	Rate	M+-	Y+-	Labor Force	Employment	Unemployment	Rate	Labor Force	Employment	Unemployment	Rate
United States	Nation	161,921,000	155,215,000	6,706,000	4.1	0.0	-0.6	161,115,000	154,430,000	6,684,000	4.1	159,997,000	152,511,000	7,486,000	4.7
Texas	State	13,657,129	13,113,005	544,124	4.0	0.0	-0.7	13,612,743	13,074,211	538,532	4.0	13,476,511	12,838,778	637,733	4.7
Corpus Christi	MSA	209,047	197,463	11,584	5.5	-0.3	-0.9	205,754	193,718	12,036	5.8	209,940	196,599	13,341	6.4
Coastal Bend	WDA	264,561	249,766	14,795	5.6	-0.3	-1.1	260,035	244,722	15,313	5.9	266,697	248,881	17,816	6.7
Aransas	County	10,463	9,723	740	7.1	-0.9	0.6	10,379	9,545	834	8.0	10,347	9,674	673	6.5
Bee	County	9,862	9,293	569	5.8	-0.3	-1.5	9,633	9,046	587	6.1	10,152	9,406	746	7.3
Brooks	County	2,441	2,264	177	7.3	0.1	-2.7	2,416	2,243	173	7.2	2,441	2,198	243	10.0
Duval	County	4,808	4,517	291	6.1	0.0	-3.7	4,737	4,449	288	6.1	4,896	4,414	482	9.8
Jim Wells	County	16,631	15,565	1,066	6.4	-0.2	-3.0	16,343	15,266	1,077	6.6	16,927	15,339	1,588	9.4
Kenedy	County	268	259	9	3.4	0.7	-0.9	261	254	7	2.7	234	224	10	4.3
Kleberg	County	13,136	12,433	703	5.4	-0.3	-1.3	12,629	11,911	718	5.7	13,655	12,735	920	6.7
Live Oak	County	5,398	5,176	222	4.1	-0.5	-1.5	5,316	5,072	244	4.6	5,258	4,964	294	5.6
Nueces	County	167,923	159,339	8,584	5.1	-0.2	-0.9	165,162	156,350	8,812	5.3	168,765	158,609	10,156	6.0
Refugio	County	2,970	2,796	174	5.9	-0.3	-0.1	2,946	2,763	183	6.2	3,194	3,002	192	6.0
San Patricio	County	30,661	28,401	2,260	7.4	-0.5	-0.7	30,213	27,823	2,390	7.9	30,828	28,316	2,512	8.1

(M+-) Change in unemployment rate from last month (Increase) (Decrease)

(Y+-) Change in unemployment rate from last year (Increase) (Decrease)

- Earnings for all occupations Coastal Bend, expressed as hourly rate (TWC):

Coastal Bend	All Occupations-	Average \$18.35/hr.	Entry level \$8.58/hr.	Experienced workers \$23.24/hr.	Top 10% \$33.56/hr.
Texas	All Occupations-	Average \$20.97/hr.	Entry level \$8.88/hr.	Experienced workers \$ 27.02/hr.	Top 10% \$39.64/hr.

- Educational Attainment for population 25 years of age and older - Corpus Christi (Census American Fact Finder/American Community Survey):

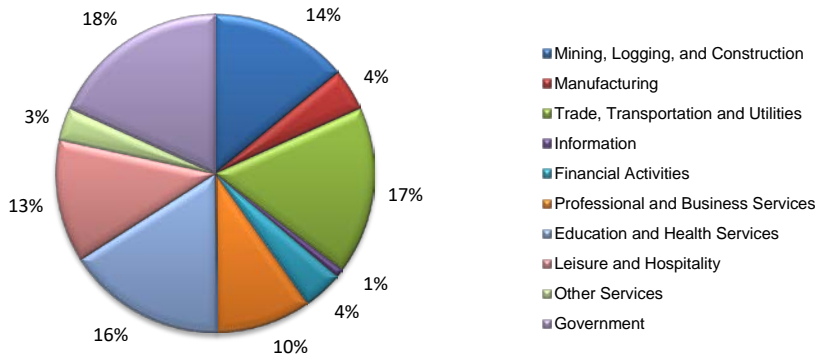
Less than 9th grade	8.7%	12th grade & GED	27.7%	Associates degree	7.0%	Graduate or Professional degrees	8.4%
9th thru 11th grade	9.3%	Some College	25.1%	Bachelors degree	13.8%		

- Median earnings Corpus Christi by education for persons 25 years of age & up (Census AFF/ACS): **\$27,211** (\$36,380 male/ \$22,328 female)

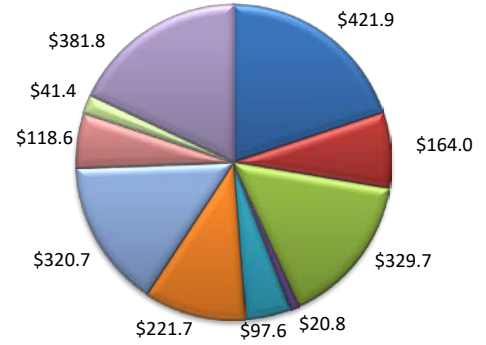
Less than High School	\$15,437	Some College or Associates	\$28,739	Graduate or Professional	\$56,681
High School & GED	\$26,818	Bachelor's	\$44,078		

(Aransas, Nueces, San Patricio)

Industry Composition



Wages by Industry (in millions)
3rd Quarter 2017



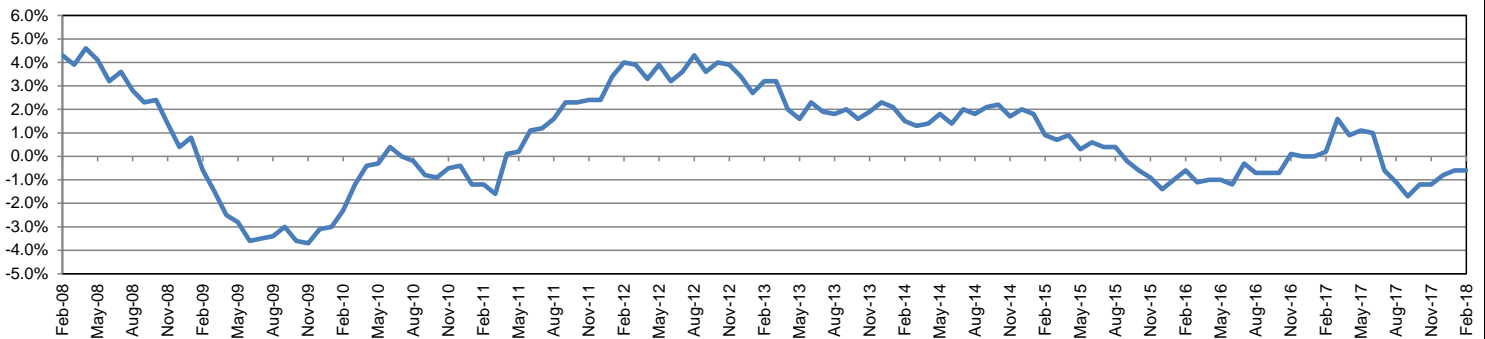
Employment by Industry

				Monthly Change		Annual Change	
	Feb-18	Jan-18	Feb-17	Actual	%	Actual	%
Total Nonfarm	191,200	188,800	192,300	2,400	1.3%	-1,100	-0.6%
Mining, Logging and Construction	26,900	26,100	26,500	800	3.1%	400	1.5%
Manufacturing	8,100	8,200	8,300	-100	-1.2%	-200	-2.4%
Trade, Transportation, and Utilities	32,500	32,500	33,200	0	0.0%	-700	-2.1%
Information	1,700	1,700	1,800	0	0.0%	-100	-5.6%
Financial Activities	7,700	7,700	7,700	0	0.0%	0	0.0%
Professional and Business Services	18,300	17,700	16,600	600	3.4%	1,700	10.2%
Education and Health Services	31,000	30,800	31,400	200	0.6%	-400	-1.3%
Leisure and Hospitality	23,700	23,300	24,900	400	1.7%	-1,200	-4.8%
Other Services	6,400	6,400	6,600	0	0.0%	-200	-3.0%
Government	34,900	34,400	35,300	500	1.5%	-400	-1.1%

Industry Size Class

Size Class	Employees per firm	Number of Firms	September 2017	
			Employment in Size Class	% Total Employment
9	1000+	20	46,101	25.0%
8	500-999	21	13,910	7.6%
7	250-499	50	16,864	9.2%
6	100-249	213	31,427	17.1%
5	50-99	285	19,992	10.9%
4	20-49	782	24,075	13.1%
3	10-19	1,069	14,739	8.0%
2	5-9	1,487	9,808	5.3%
1	1-4	3,484	7,165	3.9%
0	0	844	0	0.0%
Total		8,255	184,081	100.0%

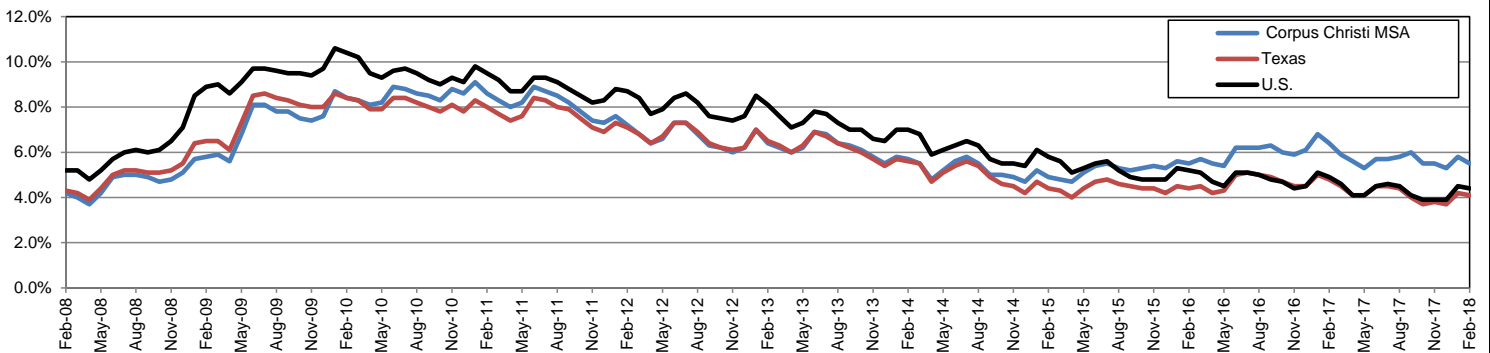
Annual Growth Rate for Total Nonagricultural Employment



Unemployment Information (all estimates in thousands)

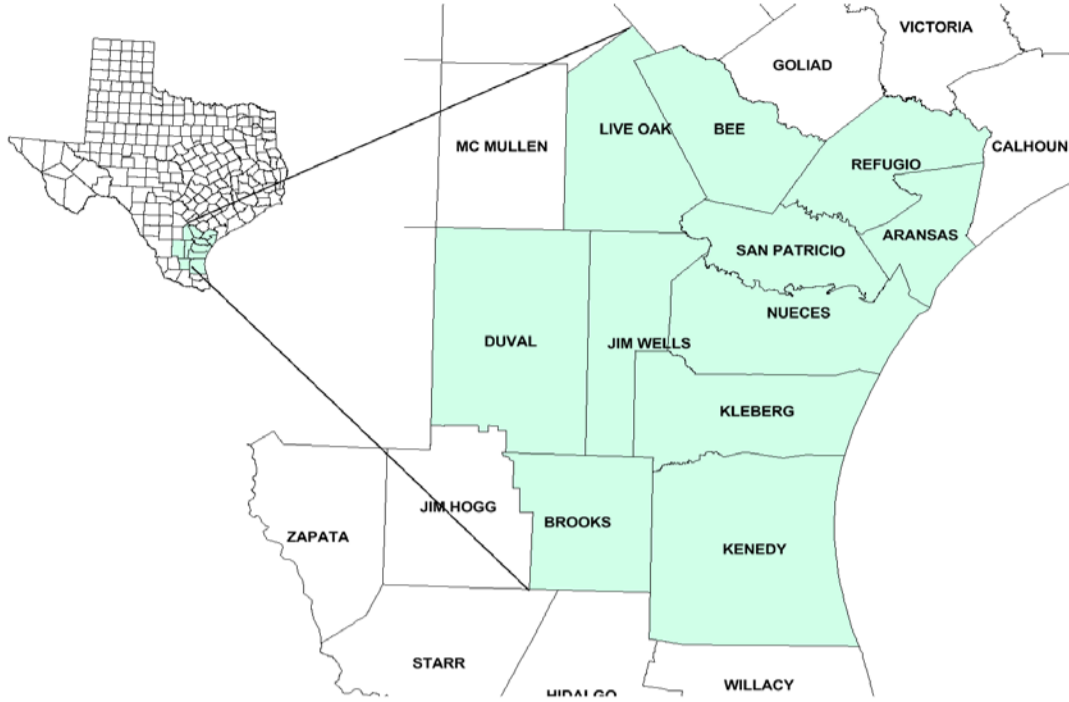
	Corpus Christi MSA				Texas (Actual)				United States (Actual)			
	C.L.F.	Emp.	Unemp.	Rate	C.L.F.	Emp.	Unemp.	Rate	C.L.F.	Emp.	Unemp.	Rate
Feb-18	209.0	197.5	11.6	5.5	13,811.9	13,241.9	570.0	4.1	161,494.0	154,403.0	7,091.0	4.4
Jan-18	205.8	193.7	12.0	5.8	13,621.8	13,053.8	568.0	4.2	160,037.0	152,848.0	7,189.0	4.5
Feb-17	209.9	196.6	13.3	6.4	13,494.0	12,840.8	653.1	4.8	159,482.0	151,594.0	7,887.0	4.9

Historical Unemployment Rates



Coastal Bend Workforce Development Area

February 2018



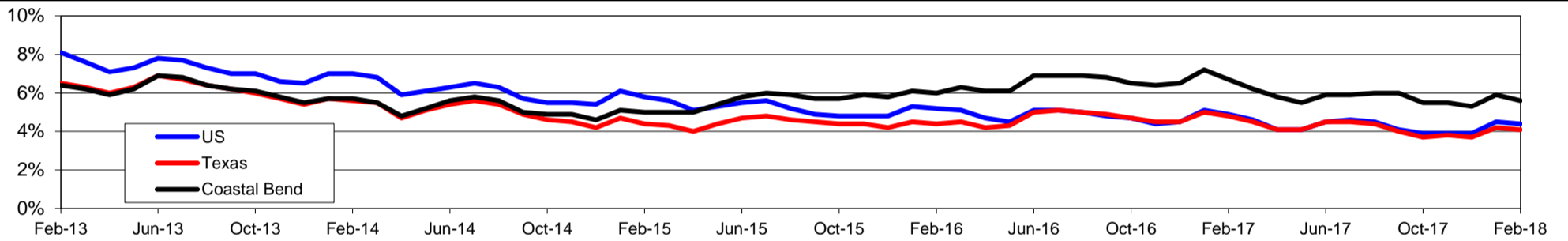
WDA Labor Force Statistics				
	Feb-18	Jan-18	Feb-17	OTY
CLF	264,561	260,035	266,697	-2,136
Employed	249,766	244,722	248,881	885
Unemployed	14,795	15,313	17,816	-3,021
Rate	5.6%	5.9%	6.7%	-1.1%

Texas Labor Force Statistics				
	Feb-18	Jan-18	Feb-17	OTY
CLF	13,811,924	13,621,781	13,493,966	317,958
Employed	13,241,913	13,053,790	12,840,842	401,071
Unemployed	570,011	567,991	653,124	-83,113
Rate	4.1%	4.2%	4.8%	-0.7%

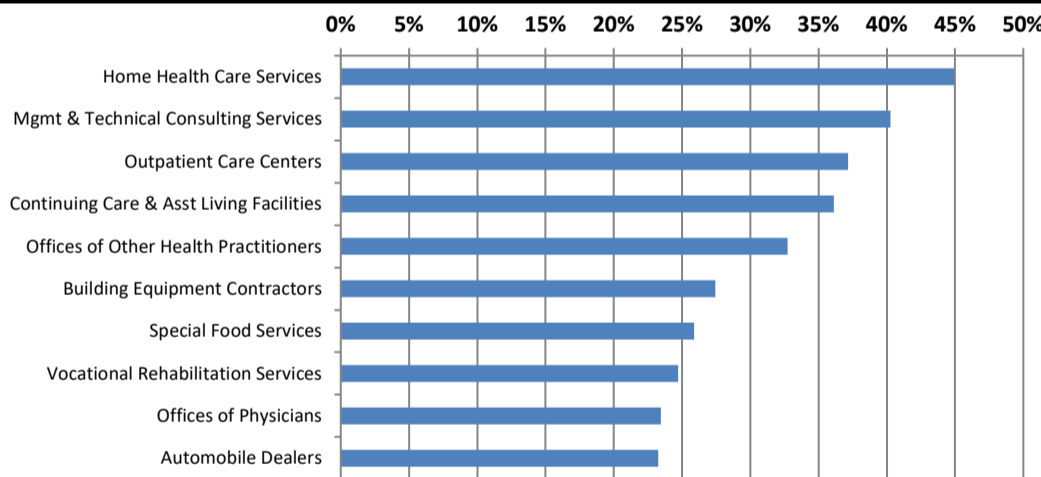
US Labor Force Statistics				
	Feb-18	Jan-18	Feb-17	OTY
CLF	161,494,000	160,037,000	159,482,000	2,012,000
Employed	154,403,000	152,848,000	151,594,000	2,809,000
Unemployed	7,091,000	7,189,000	7,887,000	-796,000
Rate	4.4%	4.5%	4.9%	-0.5%

Continued Claims for the Week of the 12th				
	Feb-18	Jan-18	Feb-17	OTY
WDA	2,720	3,409	3,740	-1,020
Texas	103,388	112,088	124,093	-20,705

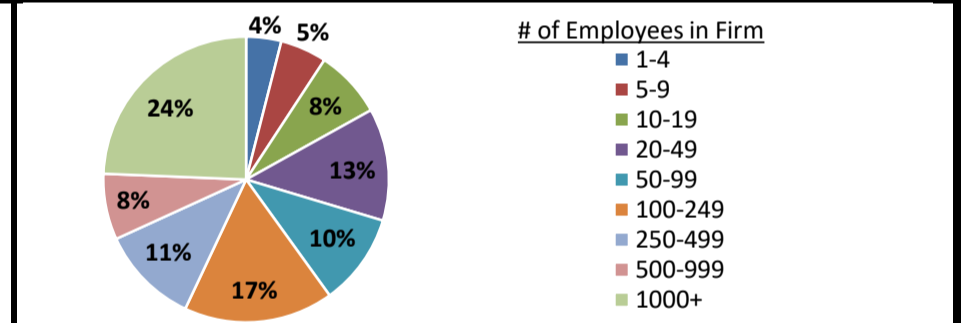
Historical Unemployment Rates



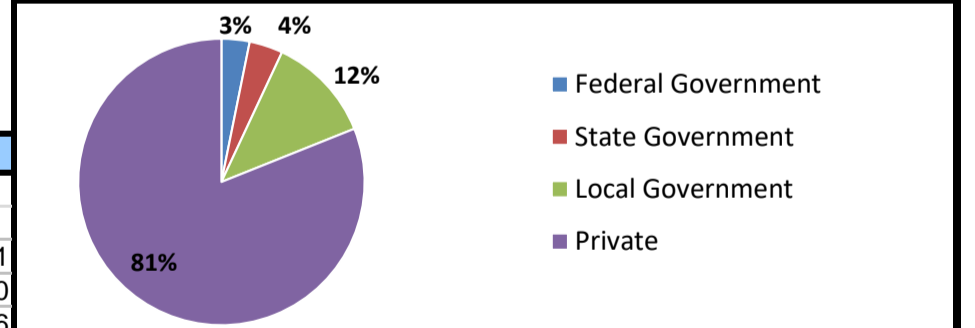
Projected Fastest Growing Industries in WDA (% growth 2014-2024)



Employment by Size Class (3rd Quarter 2017)



Employment by Ownership (3rd Quarter 2017)



Average Weekly Wage (3rd Quarter 2017)

	Q3 2017	Q2 2017	Q3 2016	Change	
				Quarter	Year
WDA	\$860	\$837	\$861	\$23	-\$1
Texas	\$1,032	\$1,027	\$1,042	\$5	-\$10
US	\$1,021	\$1,020	\$1,027	\$1	-\$6

Employment by Industry (3rd Quarter 2017, Percent Change)

Industry	Employment	% of total	% Change	
			Quarter	Year
Natural resources and mining	11,271	4.8%	7.4%	19.7%
Construction	23,619	10.1%	-4.3%	-3.5%
Manufacturing	12,384	5.3%	0.0%	-4.5%
Trade, transportation and utilities	43,000	18.4%	-0.2%	-2.2%
Information	2,080	0.9%	-1.9%	-5.5%
Financial activities	9,487	4.1%	0.6%	1.2%
Professional and business services	18,908	8.1%	2.6%	4.0%
Education and health services	62,433	26.8%	-6.5%	-2.5%
Leisure and hospitality	32,132	13.8%	-1.8%	-1.2%
Other services	6,030	2.6%	-1.7%	-7.0%
Public administration	12,015	5.1%	-0.1%	-0.2%
Total	233,359	100.0%	-2.1%	-1.0%

Employment by Industry (3rd Quarter 2017)

