

Coastal Bend Workforce Area

(Not Seasonally Adjusted Unemployment Rates by WDA, MSA, & County)

Area	Area Type	Latest Monthly Data November 2017						Previous Monthly Data October 2017				Year Ago November 2016			
		Labor Force	Employment	Unemployment	Rate	M+-	Y+-	Labor Force	Employment	Unemployment	Rate	Labor Force	Employment	Unemployment	Rate
United States	Nation	160,529,000	153,918,000	6,610,000	4.1	0.0	-0.5	160,381,000	153,861,000	6,520,000	4.1	159,456,000	152,048,000	7,409,000	4.6
Texas	State	13,480,561	12,968,440	512,121	3.8	-0.1	-1.0	13,427,830	12,910,602	517,228	3.9	13,347,755	12,711,707	636,048	4.8
Corpus Christi	MSA	209,281	198,234	11,047	5.3	0.2	-0.7	207,734	197,075	10,659	5.1	205,885	193,454	12,431	6.0
Coastal Bend	WDA	263,434	249,349	14,085	5.3	0.1	-1.2	261,798	248,231	13,567	5.2	262,005	245,002	17,003	6.5
Aransas	County	10,479	9,639	840	8.0	-0.2	2.0	10,447	9,592	855	8.2	10,010	9,411	599	6.0
Bee	County	9,736	9,174	562	5.8	0.3	-1.8	9,735	9,196	539	5.5	10,096	9,333	763	7.6
Brooks	County	2,290	2,141	149	6.5	0.2	-3.8	2,272	2,129	143	6.3	2,342	2,101	241	10.3
Duval	County	4,625	4,353	272	5.9	0.2	-4.7	4,640	4,376	264	5.7	4,752	4,250	502	10.6
Jim Wells	County	16,060	15,079	981	6.1	0.2	-3.9	15,974	15,038	936	5.9	16,744	15,077	1,667	10.0
Kenedy	County	222	215	7	3.2	0.6	-2.1	227	221	6	2.6	190	180	10	5.3
Kleberg	County	13,202	12,550	652	4.9	0.2	-1.5	13,215	12,600	615	4.7	13,927	13,037	890	6.4
Live Oak	County	4,992	4,770	222	4.4	0.1	-1.5	4,975	4,761	214	4.3	5,026	4,730	296	5.9
Nueces	County	168,080	160,053	8,027	4.8	0.2	-0.9	166,731	159,054	7,677	4.6	165,644	156,154	9,490	5.7
Refugio	County	3,026	2,833	193	6.4	0.1	-0.3	3,026	2,835	191	6.3	3,043	2,840	203	6.7
San Patricio	County	30,722	28,542	2,180	7.1	0.1	-0.6	30,556	28,429	2,127	7.0	30,231	27,889	2,342	7.7

(M+-) Change in unemployment rate from last month (Increase) (Decrease)

(Y+-) Change in unemployment rate from last year (Increase) (Decrease)

- Earnings for all occupations Coastal Bend, expressed as hourly rate (TWC):

Coastal Bend	All Occupations-	Average \$18.35/hr.	Entry level \$8.58/hr.	Experienced workers \$23.24/hr.	Top 10% \$33.56/hr.
Texas	All Occupations-	Average \$20.97/hr.	Entry level \$8.88/hr.	Experienced workers \$ 27.02/hr.	Top 10% \$39.64/hr.

- Educational Attainment for population 25 years of age and older - Corpus Christi (Census American Fact Finder/American Community Survey):

Less than 9th grade	8.7%	12th grade & GED	27.7%	Associates degree	7.0%	Graduate or Professional degrees	8.4%
9th thru 11th grade	9.3%	Some College	25.1%	Bachelors degree	13.8%		

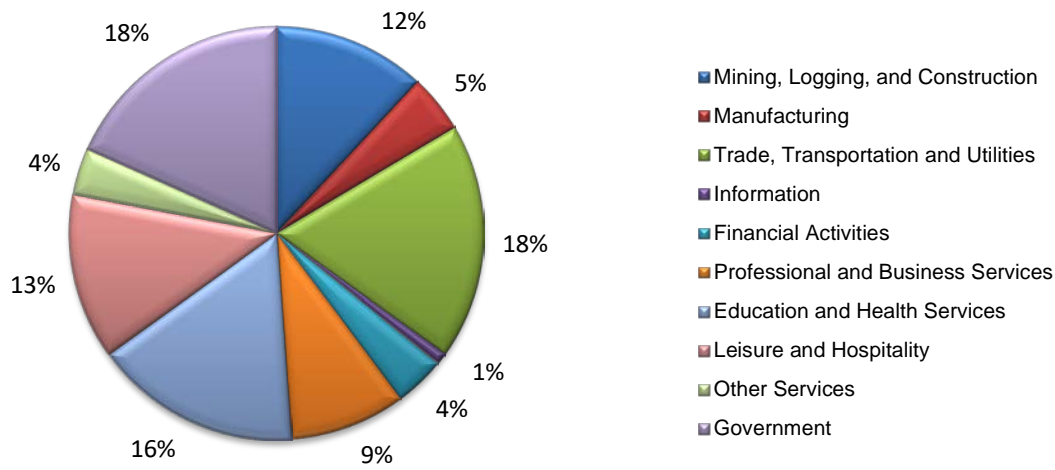
- Median earnings Corpus Christi by education for persons 25 years of age & up (Census AFF/ACS): **\$27,211** (\$36,380 male/ \$22,328 female)

Less than High School	\$15,437	Some College or Associates	\$28,739	Graduate or Professional	\$56,681
High School & GED	\$26,818	Bachelor's	\$44,078		

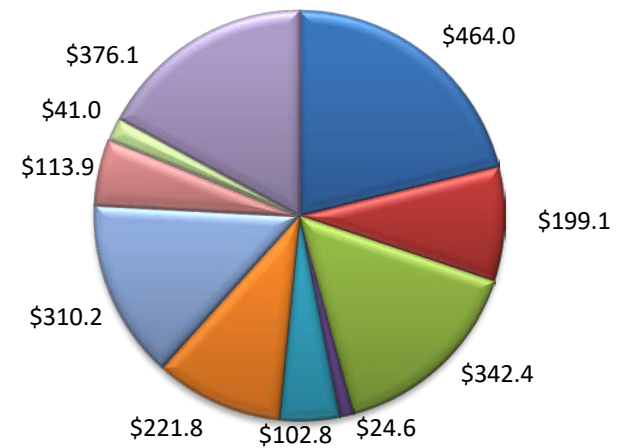
Equal Opportunity Employer/Program. Auxiliary aids and services are available upon request to individuals with disabilities.
Deaf, hard-of-hearing or speech impaired customers may contact **Relay Texas:** 1-800-735-2989 (TDD) and 1-800-735-2988 or 7-1-1 (Voice)

(Aransas, Nueces, San Patricio)

Industry Composition



Wages by Industry (in millions)
2nd Quarter 2017



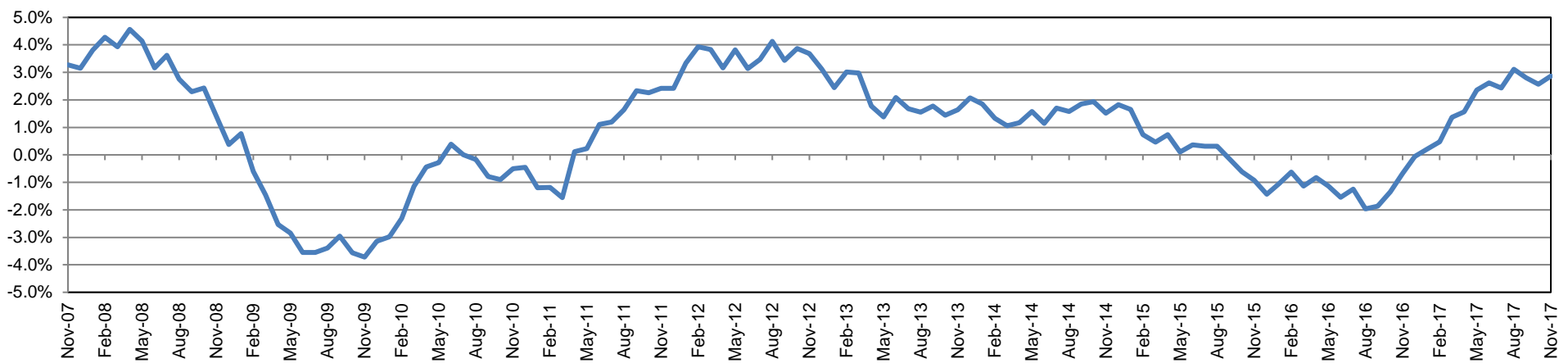
Employment by Industry

	Nov-17	Oct-17	Nov-16	Monthly Change		Annual Change	
				Actual	%	Actual	%
Total Nonfarm	197,100	195,500	191,600	1,600	0.8%	5,500	2.9%
Mining, Logging, and Construction	23,500	23,300	22,200	200	0.9%	1,300	5.9%
Manufacturing	9,000	9,000	8,700	0	0.0%	300	3.4%
Trade, Transportation, and Utilities	36,300	35,400	34,400	900	2.5%	1,900	5.5%
Information	1,800	1,700	1,800	100	5.9%	0	0.0%
Financial Activities	7,900	7,900	7,600	0	0.0%	300	3.9%
Professional and Business Services	17,800	17,500	16,600	300	1.7%	1,200	7.2%
Education and Health Services	31,900	32,300	31,900	-400	-1.2%	0	0.0%
Leisure and Hospitality	25,500	25,400	25,600	100	0.4%	-100	-0.4%
Other Services	7,300	7,300	7,200	0	0.0%	100	1.4%
Government	36,100	35,700	35,600	400	1.1%	500	1.4%

Industry Size Class June 2017

Size Class	Employees per firm	Number of Firms	Employment in Size Class	% Total Employment
9	1000+	21	49,532	26.1%
8	500-999	16	11,154	5.9%
7	250-499	51	17,911	9.4%
6	100-249	224	33,502	17.6%
5	50-99	285	19,997	10.5%
4	20-49	825	25,475	13.4%
3	10-19	1,110	15,211	8.0%
2	5-9	1,508	9,987	5.3%
1	1-4	3,493	7,203	3.8%
0	0	717	0	0.0%
Total		8,250	189,972	100.0%

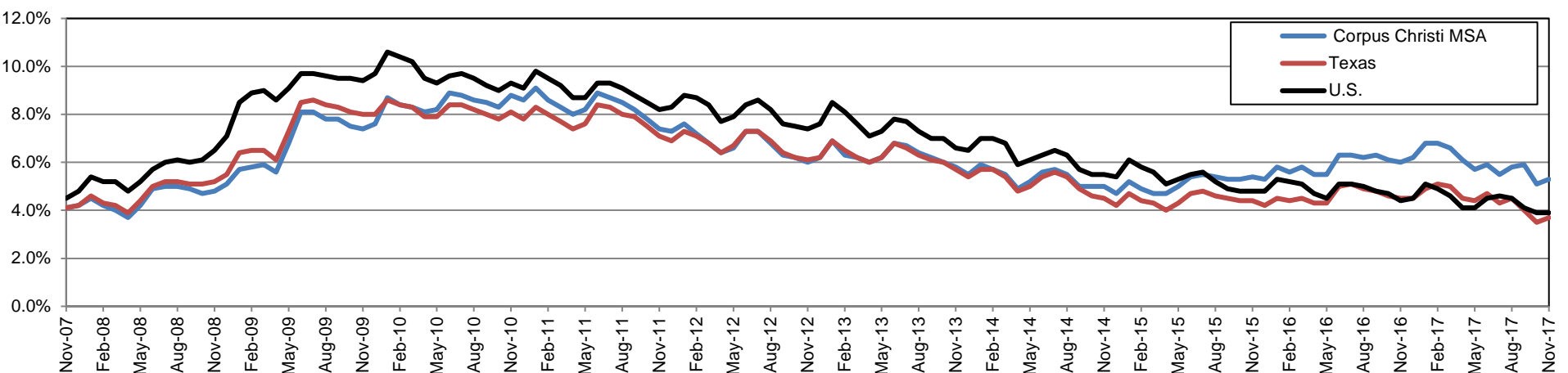
Annual Growth Rate for Total Nonagricultural Employment



Unemployment Information (all estimates in thousands)

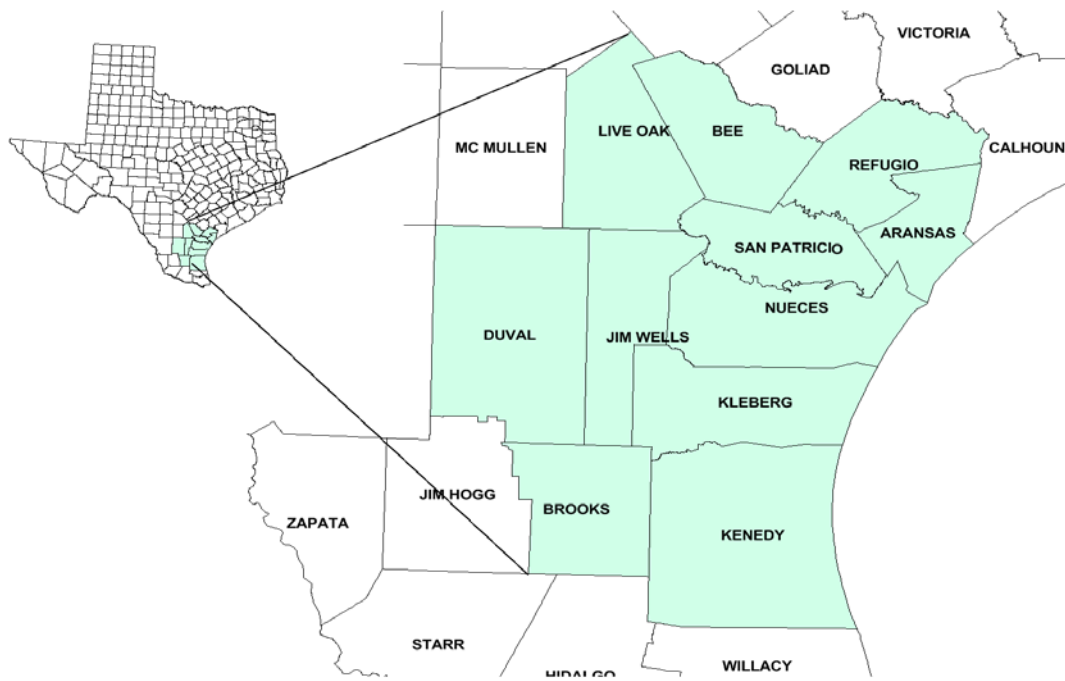
	Corpus Christi MSA				Texas (Actual)				United States (Actual)			
	C.L.F.	Emp.	Unemp.	Rate	C.L.F.	Emp.	Unemp.	Rate	C.L.F.	Emp.	Unemp.	Rate
Nov-17	209.3	198.2	11.0	5.3	13,501.8	13,002.6	499.3	3.7	160,466.0	154,180.0	6,286.0	3.9
Oct-17	207.7	197.1	10.7	5.1	13,392.5	12,922.8	469.7	3.5	160,465.0	154,223.0	6,242.0	3.9
Nov-16	205.9	193.5	12.4	6.0	13,371.1	12,771.2	599.9	4.5	159,451.0	152,385.0	7,066.0	4.4

Historical Unemployment Rates



Coastal Bend Workforce Development Area

November 2017



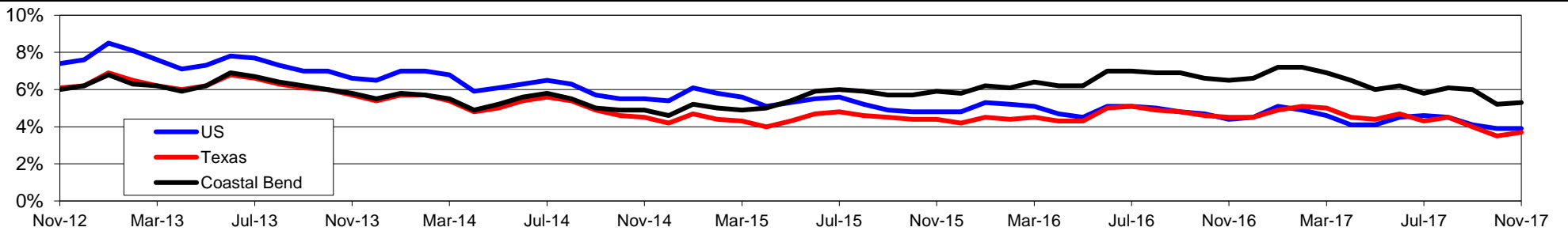
WDA Labor Force Statistics				
	Nov-17	Oct-17	Nov-16	OTY
CLF	263,434	261,798	262,005	1,429
Employed	249,349	248,231	245,002	4,347
Unemployed	14,085	13,567	17,003	-2,918
Rate	5.3%	5.2%	6.5%	-1.2%

Texas Labor Force Statistics				
	Nov-17	Oct-17	Nov-16	OTY
CLF	13,501,846	13,392,522	13,371,089	130,757
Employed	13,002,576	12,922,849	12,771,219	231,357
Unemployed	499,270	469,673	599,870	-100,600
Rate	3.7%	3.5%	4.5%	-0.8%

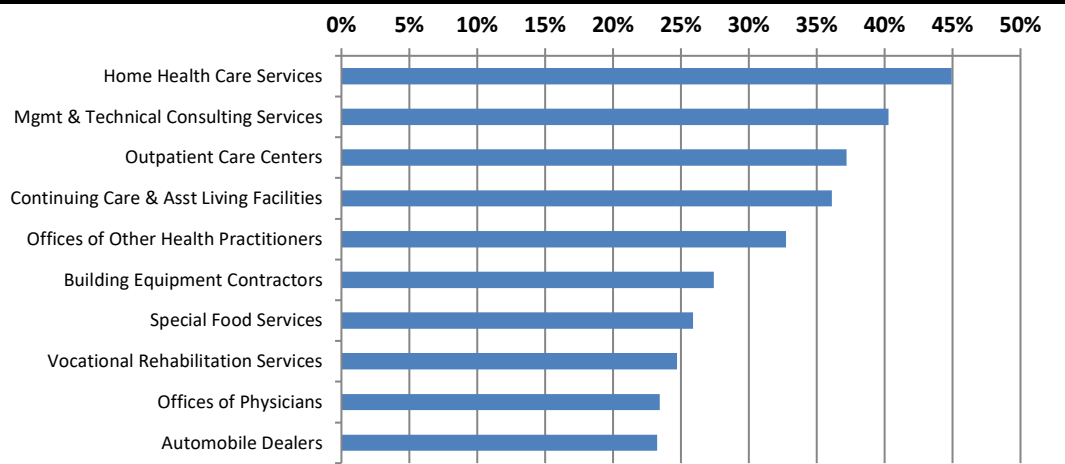
US Labor Force Statistics				
	Nov-17	Oct-17	Nov-16	OTY
CLF	160,466,000	160,465,000	159,451,000	1,015,000
Employed	154,180,000	154,223,000	152,385,000	1,795,000
Unemployed	6,286,000	6,242,000	7,066,000	-780,000
Rate	3.9%	3.9%	4.4%	-0.5%

Continued Claims for the Week of the 12th				
	Nov-17	Oct-17	Nov-16	OTY
WDA	3,781	3,904	4,167	-386
Texas	104,499	105,966	126,982	-22,483

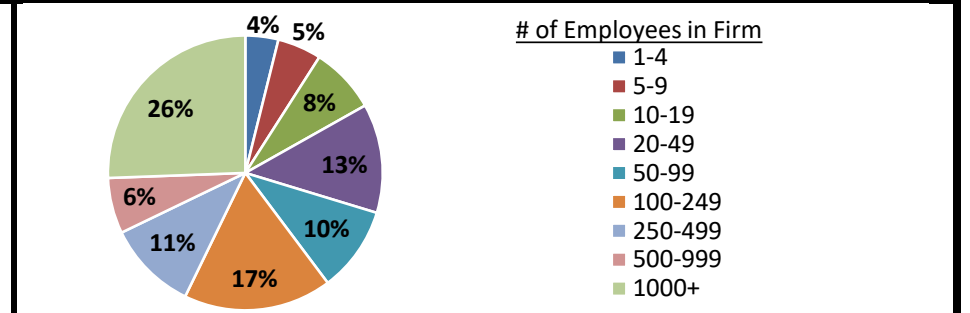
Historical Unemployment Rates



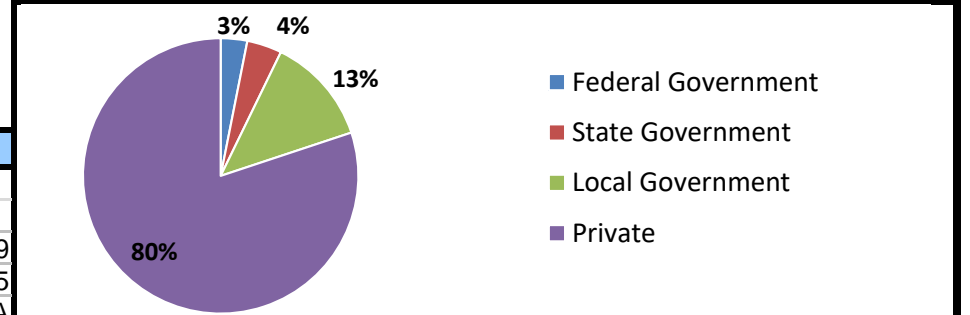
Projected Fastest Growing Industries in WDA (% growth 2014-2024)



Employment by Size Class (2nd Quarter 2017)



Employment by Ownership (2nd Quarter 2017)



Average Weekly Wage (2nd Quarter 2017)

	Wage			Change	
	Q2 2017	Q1 2017	Q2 2016	Quarter	Year
WDA	\$837	\$879	\$818	-\$42	\$19
Texas	\$1,026	\$1,124	\$1,000	-\$99	\$25
US	N/A	\$1,111	\$988	N/A	N/A

Employment by Industry (2nd Quarter 2017, Percent Change)

Industry	Employment	% of total	% Change	
			Quarter	Year
Natural resources and mining	10,469	4.4%	6.9%	11.4%
Construction	24,645	10.3%	-0.1%	6.8%
Manufacturing	12,376	5.2%	-1.1%	-6.1%
Trade, transportation and utilities	43,129	18.1%	0.8%	-1.7%
Information	2,119	0.9%	-0.9%	-5.8%
Financial activities	9,417	4.0%	1.8%	0.1%
Professional and business services	18,424	7.7%	0.1%	-0.4%
Education and health services	66,756	28.0%	0.1%	1.9%
Leisure and hospitality	32,659	13.7%	6.5%	0.3%
Other services	6,127	2.6%	1.9%	-5.9%
Public administration	12,027	5.1%	0.1%	0.7%
Total	238,148	100.0%	1.4%	0.8%

Employment by Industry (2nd Quarter 2017)

