

# Coastal Bend Workforce Area

(Not Seasonally Adjusted Unemployment Rates by WDA, MSA, & County)

Area	Area Type	Latest Monthly Data May 2017						Previous Monthly Data April 2017				Year Ago May 2016			
		Labor Force	Employment	Unemployment	Rate	M+-	Y+-	Labor Force	Employment	Unemployment	Rate	Labor Force	Employment	Unemployment	Rate
United States	Nation	159,784,000	152,923,000	6,861,000	4.3	-0.1	-0.4	160,213,000	153,156,000	7,056,000	4.4	158,510,000	151,058,000	7,451,000	4.7
Texas	State	13,526,420	12,870,462	655,958	4.8	-0.2	0.1	13,548,771	12,872,464	676,307	5.0	13,231,311	12,615,703	615,608	4.7
Corpus Christi	MSA	208,767	196,798	11,969	5.7	-0.4	0.2	209,834	196,940	12,894	6.1	205,510	194,177	11,333	5.5
Coastal Bend	WDA	263,599	247,749	15,850	6.0	-0.5	-0.2	265,396	248,271	17,125	6.5	263,633	247,351	16,282	6.2
Aransas	County	10,193	9,612	581	5.7	-0.3	0.6	10,228	9,611	617	6.0	10,045	9,537	508	5.1
Bee	County	10,084	9,399	685	6.8	-0.4	-0.7	10,164	9,430	734	7.2	10,488	9,704	784	7.5
Brooks	County	2,271	2,069	202	8.9	-0.9	-2.8	2,307	2,080	227	9.8	2,420	2,136	284	11.7
Duval	County	4,613	4,207	406	8.8	-1.0	-2.2	4,646	4,189	457	9.8	4,869	4,333	536	11.0
Jim Wells	County	15,996	14,682	1,314	8.2	-0.8	-2.6	16,260	14,792	1,468	9.0	17,350	15,468	1,882	10.8
Kenedy	County	216	208	8	3.7	-1.0	-0.5	215	205	10	4.7	237	227	10	4.2
Kleberg	County	13,751	12,915	836	6.1	-0.3	-0.4	14,011	13,115	896	6.4	14,382	13,443	939	6.5
Live Oak	County	4,836	4,571	265	5.5	0.1	-0.3	4,884	4,618	266	5.4	5,230	4,927	303	5.8
Nueces	County	167,828	158,749	9,079	5.4	-0.4	0.2	168,587	158,875	9,712	5.8	165,200	156,541	8,659	5.2
Refugio	County	3,065	2,900	165	5.4	-0.2	-1.3	3,075	2,902	173	5.6	3,147	2,936	211	6.7
San Patricio	County	30,746	28,437	2,309	7.5	-0.8	0.3	31,019	28,454	2,565	8.3	30,265	28,099	2,166	7.2

(M+-) Change in unemployment rate from last month (Increase) (Decrease)

(Y+-) Change in unemployment rate from last year (Increase) (Decrease)

- Earnings for all occupations Coastal Bend, expressed as hourly rate (TWC):

<b>Coastal Bend</b>	<b>All Occupations-</b>	<b>Average \$18.35/hr.</b>	<b>Entry level \$8.58/hr.</b>	<b>Experienced workers \$23.24/hr.</b>	<b>Top 10% \$33.56/hr.</b>
<b>Texas</b>	<b>All Occupations-</b>	<b>Average \$20.97/hr.</b>	<b>Entry level \$8.88/hr.</b>	<b>Experienced workers \$ 27.02/hr.</b>	<b>Top 10% \$39.64/hr.</b>

- Educational Attainment for population 25 years of age and older - Corpus Christi (Census American Fact Finder/American Community Survey):

<b>Less than 9<sup>th</sup> grade</b>	<b>8.7%</b>	<b>12<sup>th</sup> grade &amp; GED</b>	<b>27.7%</b>	<b>Associates degree</b>	<b>7.0%</b>	<b>Graduate or Professional degrees</b>	<b>8.4%</b>
<b>9<sup>th</sup> thru 11<sup>th</sup> grade</b>	<b>9.3%</b>	<b>Some College</b>	<b>25.1%</b>	<b>Bachelors degree</b>	<b>13.8%</b>		

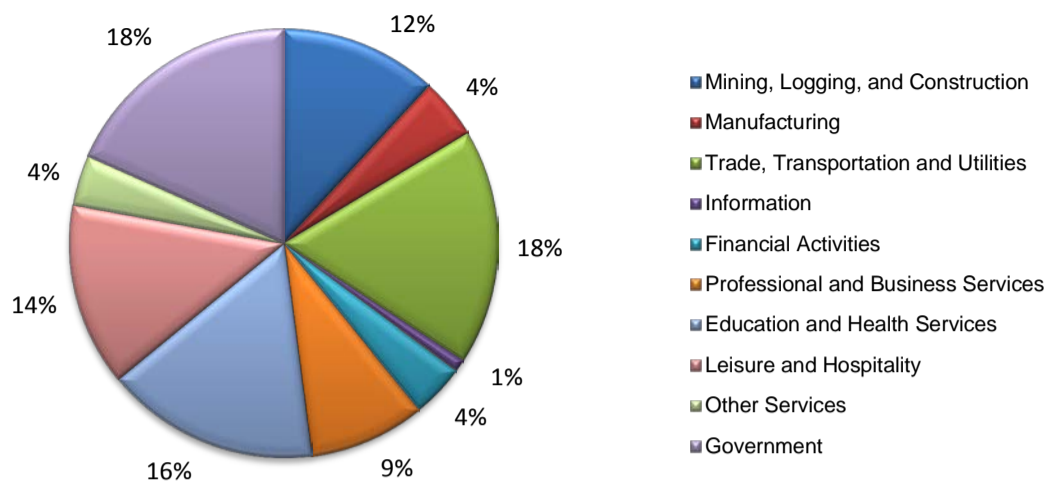
- Median earnings Corpus Christi by education for persons 25 years of age & up (Census AFF/ACS): **\$27,211** (\$36,380 male/ \$22,328 female)

<b>Less than High School</b>	<b>\$15,437</b>	<b>Some College or Associates</b>	<b>\$28,739</b>	<b>Graduate or Professional</b>	<b>\$56,681</b>
<b>High School &amp; GED</b>	<b>\$26,818</b>	<b>Bachelor's</b>	<b>\$44,078</b>		

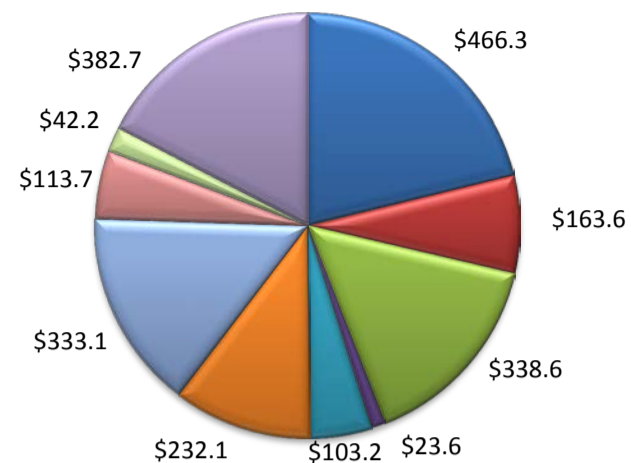
**Equal Opportunity Employer/Program.** Auxiliary aids and services are available upon request to individuals with disabilities.  
Deaf, hard-of-hearing or speech impaired customers may contact **Relay Texas:** 1-800-735-2989 (TDD) and 1-800-735-2988 or 7-1-1 (Voice)

(Aransas, Nueces, San Patricio)

Industry Composition



Wages by Industry (in millions)  
4th Quarter 2016



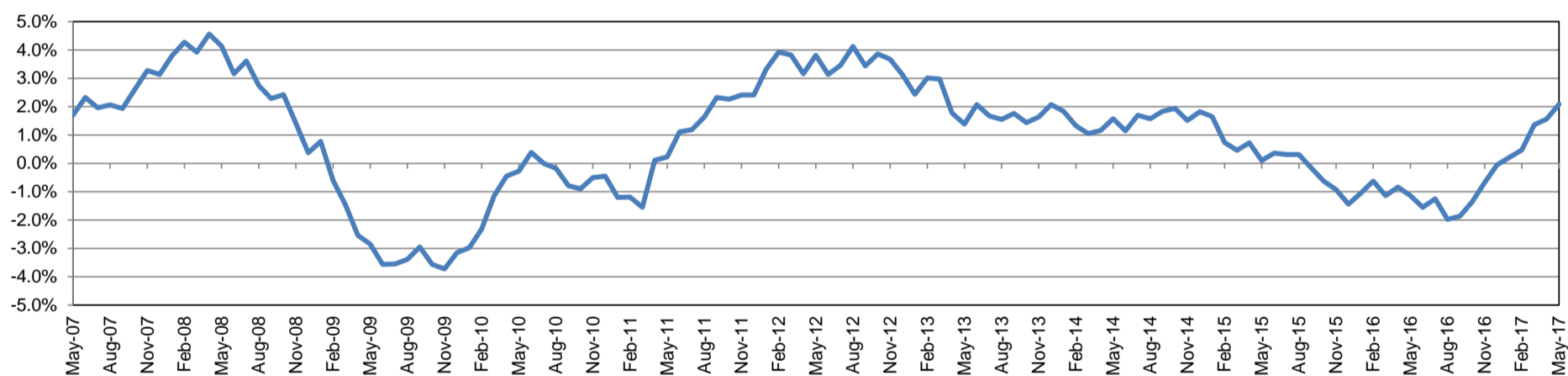
Employment by Industry

	May-17	Apr-17	May-16	Monthly Change		Annual Change	
				Actual	%	Actual	%
Total Nonfarm	195,300	194,200	191,300	1,100	0.6%	4,000	2.1%
Mining, Logging, and Construction	23,100	22,900	22,300	200	0.9%	800	3.6%
Manufacturing	8,900	8,700	8,800	200	2.3%	100	1.1%
Trade, Transportation, and Utilities	34,800	34,900	34,000	-100	-0.3%	800	2.4%
Information	1,800	1,800	1,900	0	0.0%	-100	-5.3%
Financial Activities	7,800	7,800	7,700	0	0.0%	100	1.3%
Professional and Business Service:	17,200	17,200	16,800	0	0.0%	400	2.4%
Education and Health Services	31,500	31,700	30,800	-200	-0.6%	700	2.3%
Leisure and Hospitality	27,000	26,500	26,500	500	1.9%	500	1.9%
Other Services	7,400	7,400	7,300	0	0.0%	100	1.4%
Government	35,800	35,300	35,200	500	1.4%	600	1.7%

Industry Size Class December 2016

Size Class	Employees per firm	Number of Firms	Employment in Size Class	% Total Employment
9	1000+	20	47,935	25.4%
8	500-999	20	13,912	7.4%
7	250-499	49	16,846	8.9%
6	100-249	210	31,779	16.9%
5	50-99	306	21,256	11.3%
4	20-49	817	24,873	13.2%
3	10-19	1,089	14,753	7.8%
2	5-9	1,506	9,886	5.2%
1	1-4	3,592	7,284	3.9%
0	0	652	0	0.0%
Total		8,261	188,524	100.0%

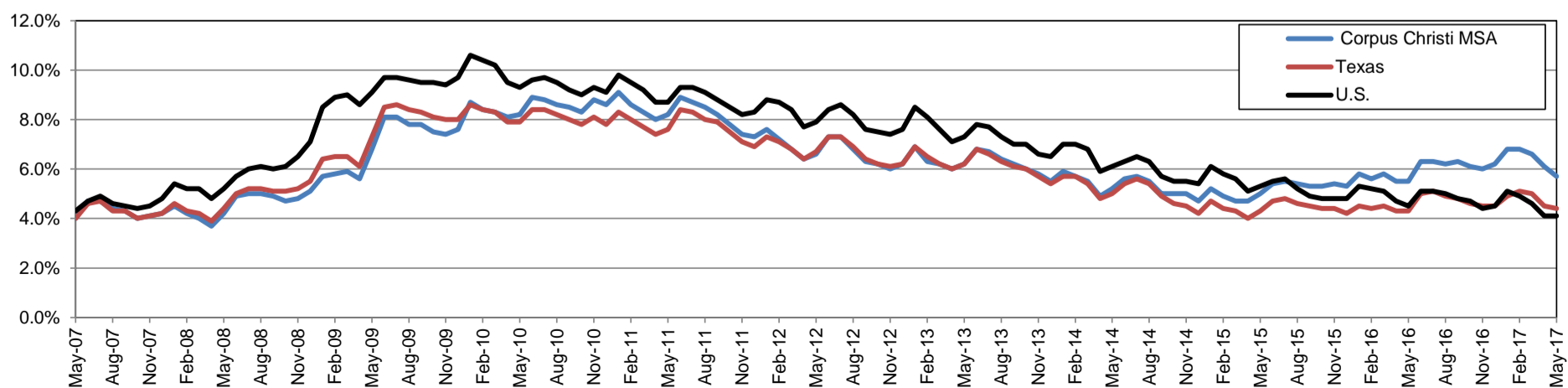
Annual Growth Rate for Total Nonagricultural Employment



Unemployment Information (all estimates in thousands)

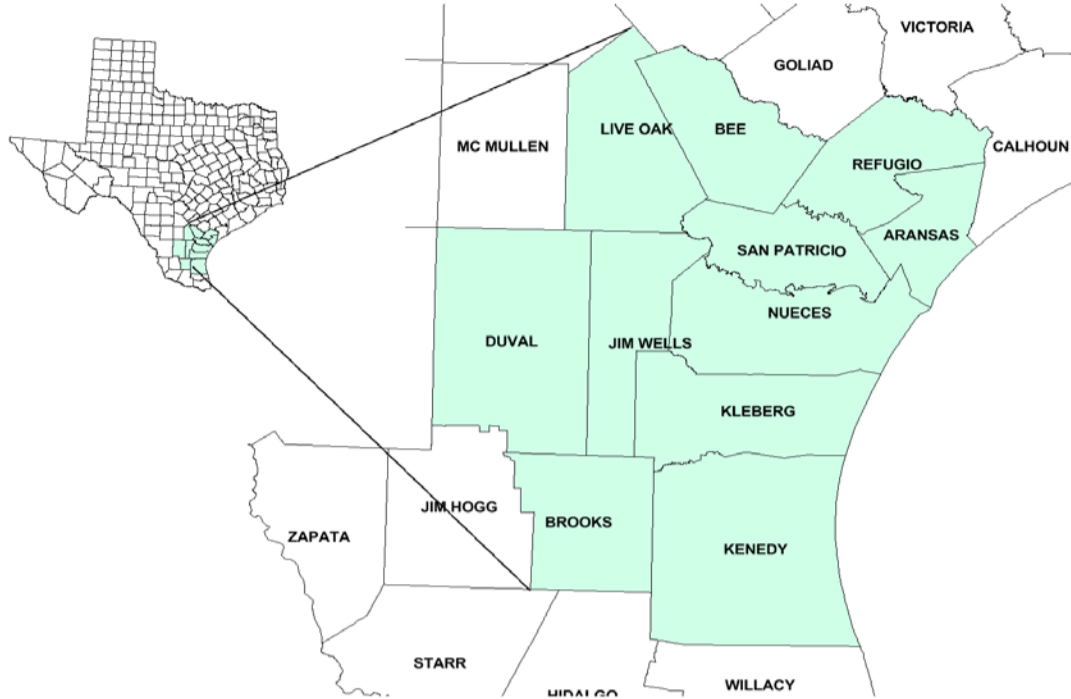
	Corpus Christi MSA				Texas (Actual)				United States (Actual)			
	C.L.F.	Emp.	Unemp.	Rate	C.L.F.	Emp.	Unemp.	Rate	C.L.F.	Emp.	Unemp.	Rate
May-17	208.8	196.8	12.0	5.7	13,449.2	12,857.2	592.0	4.4	159,979.0	153,407.0	6,572.0	4.1
Apr-17	209.8	196.9	12.9	6.1	13,506.9	12,895.1	611.7	4.5	159,817.0	153,262.0	6,555.0	4.1
May-16	205.5	194.2	11.3	5.5	13,245.5	12,679.1	566.4	4.3	158,800.0	151,594.0	7,207.0	4.5

Historical Unemployment Rates



# Coastal Bend Workforce Development Area

## May 2017



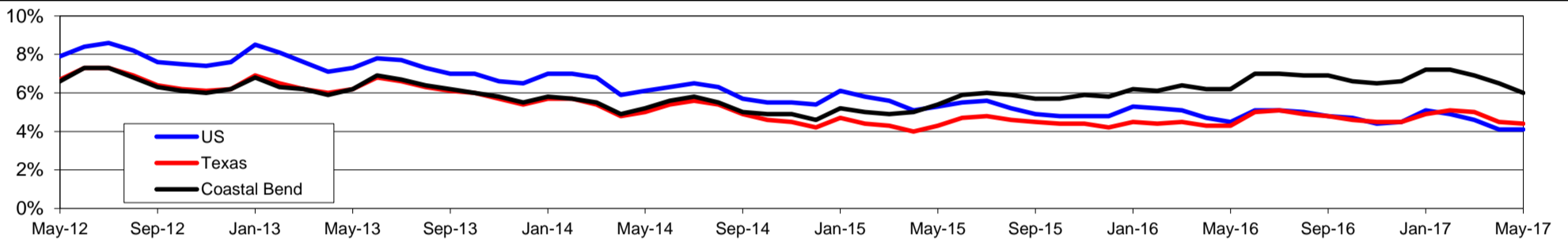
WDA Labor Force Statistics				
	May-17	Apr-17	May-16	OTY
CLF	263,599	265,396	263,633	-34
Employed	247,749	248,271	247,351	398
Unemployed	15,850	17,125	16,282	-432
Rate	6.0%	6.5%	6.2%	-0.2%

Texas Labor Force Statistics				
	May-17	Apr-17	May-16	OTY
CLF	13,449,184	13,506,876	13,245,519	203,665
Employed	12,857,230	12,895,129	12,679,140	178,090
Unemployed	591,954	611,747	566,379	25,575
Rate	4.4%	4.5%	4.3%	0.1%

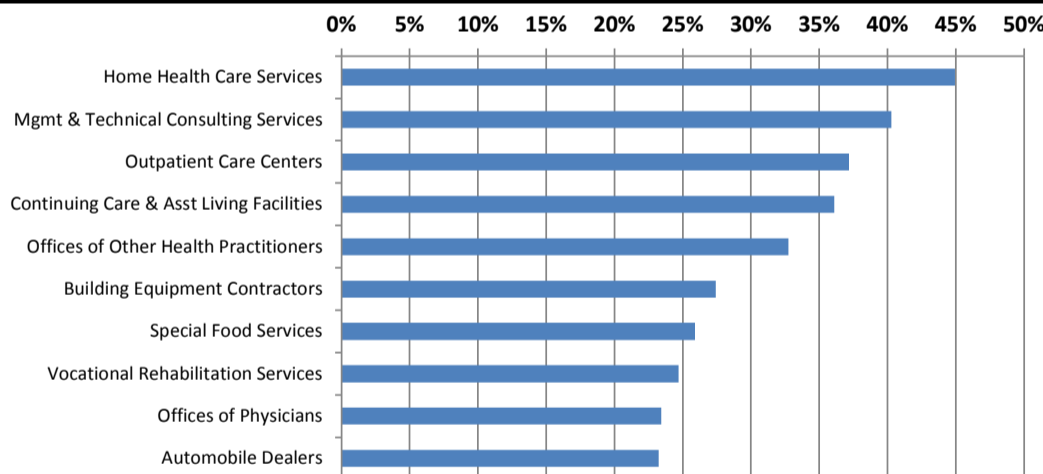
US Labor Force Statistics				
	May-17	Apr-17	May-16	OTY
CLF	159,979,000	159,817,000	158,800,000	1,179,000
Employed	153,407,000	153,262,000	151,594,000	1,813,000
Unemployed	6,572,000	6,555,000	7,207,000	-635,000
Rate	4.1%	4.1%	4.5%	-0.4%

Continued Claims for the Week of the 12th				
	May-17	Apr-17	May-16	OTY
WDA	3,086	3,392	5,227	-2,141
Texas	112,343	116,413	148,489	-36,146

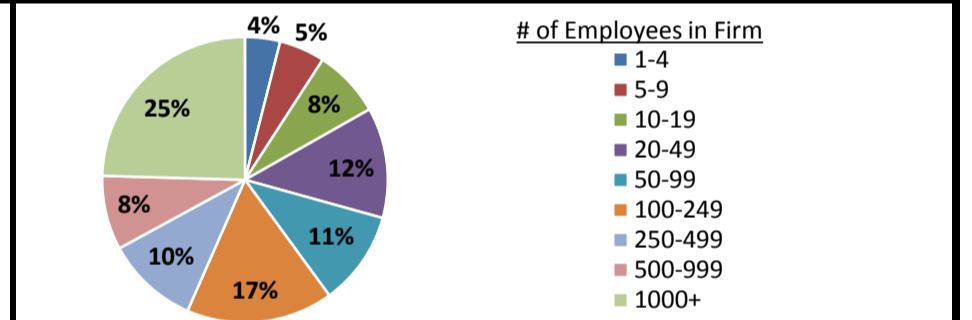
### Historical Unemployment Rates



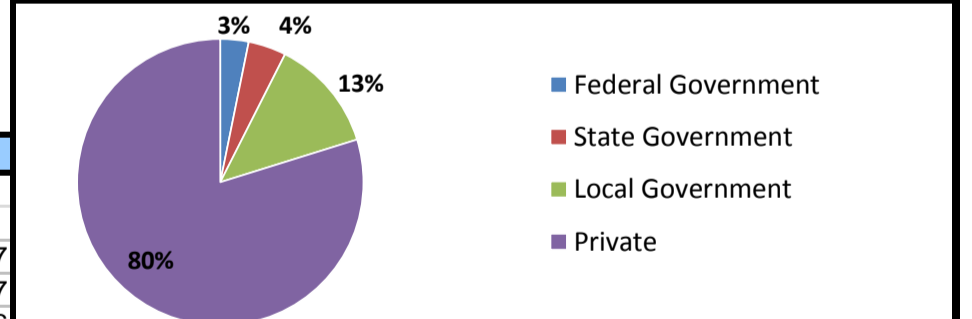
### Projected Fastest Growing Industries in WDA (% growth 2014-2024)



### Employment by Size Class (4th Quarter 2016)



### Employment by Ownership (4th Quarter 2016)



### Average Weekly Wage (4th Quarter 2016)

	Q4 2016	Q3 2016	Q4 2015	Change	
				Quarter	Year
WDA	\$869	\$861	\$896	\$8	-\$27
Texas	\$1,072	\$1,042	\$1,099	\$31	-\$27
US	\$1,067	\$1,027	\$1,083	\$40	-\$16

### Employment by Industry (4th Quarter 2016, Percent Change)

Industry	Employment	% of total	% Change	
			Quarter	Year
Natural resources and mining	9,535	4.0%	1.3%	-25.2%
Construction	25,042	10.5%	2.3%	22.4%
Manufacturing	12,626	5.3%	-2.6%	-10.1%
Trade, transportation and utilities	44,227	18.6%	0.6%	-4.6%
Information	2,138	0.9%	-2.8%	-12.7%
Financial activities	9,287	3.9%	-0.9%	-10.7%
Professional and business services	18,209	7.7%	0.1%	-4.3%
Education and health services	67,395	28.4%	5.4%	2.7%
Leisure and hospitality	30,623	12.9%	-5.8%	-2.0%
Other services	6,237	2.6%	-3.8%	-8.5%
Public administration	12,223	5.1%	1.5%	3.0%
<b>Total</b>	<b>237,542</b>	<b>100.0%</b>	<b>0.8%</b>	<b>-1.5%</b>

### Employment by Industry (4th Quarter 2016)

