

Coastal Bend Workforce Area

(Not Seasonally Adjusted Unemployment Rates by WDA, MSA, & County)

Area	Area Type	Latest Monthly Data September 2017						Previous Monthly Data August 2017				Year Ago September 2016			
		Labor Force	Employment	Unemployment	Rate	M+-	Y+-	Labor Force	Employment	Unemployment	Rate	Labor Force	Employment	Unemployment	Rate
United States	Nation	161,146,000	154,345,000	6,801,000	4.2	-0.2	-0.7	160,571,000	153,439,000	7,132,000	4.4	159,830,000	151,926,000	7,904,000	4.9
Texas	State	13,408,415	12,867,466	540,949	4.0	-0.2	-0.7	13,373,330	12,816,361	556,969	4.2	13,311,404	12,680,821	630,583	4.7
Corpus Christi	MSA	210,620	198,301	12,319	5.8	0.0	-0.5	208,841	196,728	12,113	5.8	205,244	192,339	12,905	6.3
Coastal Bend	WDA	264,779	249,130	15,649	5.9	-0.2	-1.0	262,388	246,459	15,929	6.1	262,120	244,124	17,996	6.9
Aransas	County	10,642	9,616	1,026	9.6	4.1	3.6	10,125	9,568	557	5.5	9,959	9,360	599	6.0
Bee	County	9,851	9,255	596	6.1	-0.8	-1.9	9,728	9,054	674	6.9	10,275	9,448	827	8.0
Brooks	County	2,293	2,124	169	7.4	-2.0	-4.5	2,279	2,065	214	9.4	2,396	2,112	284	11.9
Duval	County	4,672	4,352	320	6.8	-1.2	-4.6	4,557	4,193	364	8.0	4,837	4,286	551	11.4
Jim Wells	County	15,965	14,891	1,074	6.7	-1.2	-4.3	15,854	14,598	1,256	7.9	16,999	15,123	1,876	11.0
Kenedy	County	213	206	7	3.3	-0.1	-2.3	208	201	7	3.4	196	185	11	5.6
Kleberg	County	13,094	12,387	707	5.4	-1.3	-1.7	13,055	12,186	869	6.7	13,937	12,954	983	7.1
Live Oak	County	5,006	4,773	233	4.7	-0.7	-1.7	4,887	4,625	262	5.4	5,132	4,803	329	6.4
Nueces	County	168,875	160,110	8,765	5.2	-0.3	-0.8	168,094	158,785	9,309	5.5	165,129	155,210	9,919	6.0
Refugio	County	3,065	2,841	224	7.3	1.6	-0.1	2,979	2,809	170	5.7	3,104	2,874	230	7.4
San Patricio	County	31,103	28,575	2,528	8.1	0.8	0.2	30,622	28,375	2,247	7.3	30,156	27,769	2,387	7.9

(M+-) Change in unemployment rate from last month (Increase) (Decrease)

(Y+-) Change in unemployment rate from last year (Increase) (Decrease)

- Earnings for all occupations Coastal Bend, expressed as hourly rate (TWC):

Coastal Bend	All Occupations-	Average \$18.35/hr.	Entry level \$8.58/hr.	Experienced workers \$23.24/hr.	Top 10% \$33.56/hr.
Texas	All Occupations-	Average \$20.97/hr.	Entry level \$8.88/hr.	Experienced workers \$ 27.02/hr.	Top 10% \$39.64/hr.

- Educational Attainment for population 25 years of age and older - Corpus Christi (Census American Fact Finder/American Community Survey):

Less than 9th grade	8.7%	12th grade & GED	27.7%	Associates degree	7.0%	Graduate or Professional degrees	8.4%
9th thru 11th grade	9.3%	Some College	25.1%	Bachelors degree	13.8%		

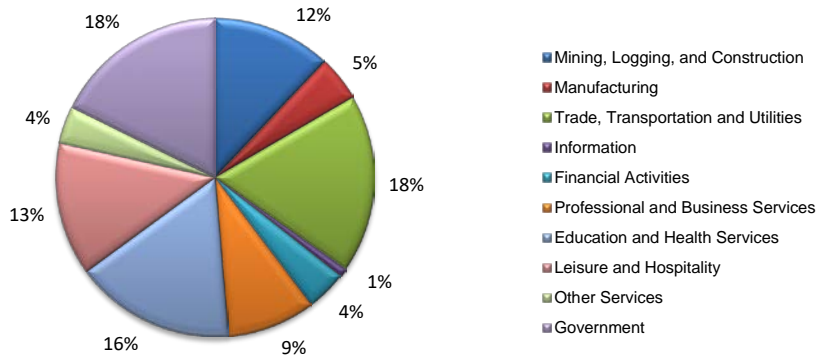
- Median earnings Corpus Christi by education for persons 25 years of age & up (Census AFF/ACS): **\$27,211** (\$36,380 male/ \$22,328 female)

Less than High School	\$15,437	Some College or Associates	\$28,739	Graduate or Professional	\$56,681
High School & GED	\$26,818	Bachelor's	\$44,078		

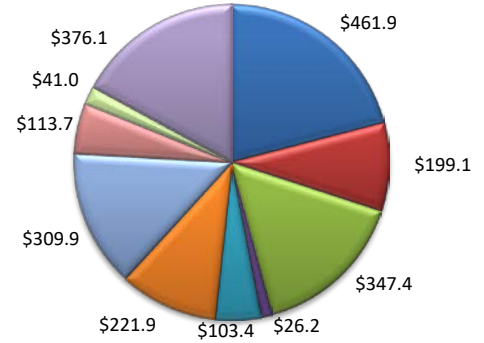
Equal Opportunity Employer/Program. Auxiliary aids and services are available upon request to individuals with disabilities.
Deaf, hard-of-hearing or speech impaired customers may contact **Relay Texas:** 1-800-735-2989 (TDD) and 1-800-735-2988 or 7-1-1 (Voice)

(Aransas, Nueces, San Patricio)

Industry Composition



Wages by Industry (in millions)
1st Quarter 2017



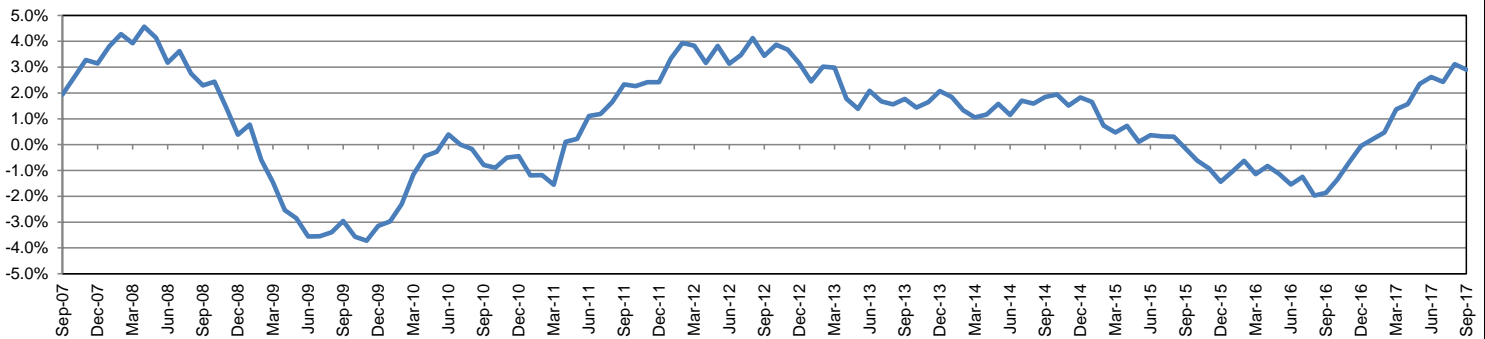
Employment by Industry

				Monthly Change		Annual Change	
	Sep-17	Aug-17	Sep-16	Actual	%	Actual	%
Total Nonfarm	194,800	195,200	189,300	-400	-0.2%	5,500	2.9%
Mining, Logging, and Construction	23,400	23,000	21,900	400	1.7%	1,500	6.8%
Manufacturing	8,900	9,000	8,600	-100	-1.1%	300	3.5%
Trade, Transportation, and Utilities	35,300	35,100	34,100	200	0.6%	1,200	3.5%
Information	1,700	1,800	1,800	-100	-5.6%	-100	-5.6%
Financial Activities	8,000	8,100	7,600	-100	-1.2%	400	5.3%
Professional and Business Services	17,500	18,200	16,400	-700	-3.9%	1,100	6.7%
Education and Health Services	31,800	32,300	31,600	-500	-1.6%	200	0.6%
Leisure and Hospitality	26,300	27,200	25,900	-900	-3.3%	400	1.5%
Other Services	7,400	7,400	7,200	0	0.0%	200	2.8%
Government	34,500	33,100	34,200	1,400	4.2%	300	0.9%

Industry Size Class

Size Class	Employees per firm	Number of Firms	January 2017	
			Employment in Size Class	% Total Employment
9	1000+	20	49,579	26.2%
8	500-999	18	12,979	6.8%
7	250-499	48	16,729	8.8%
6	100-249	211	31,833	16.8%
5	50-99	294	20,996	11.1%
4	20-49	815	25,035	13.2%
3	10-19	1,116	15,163	8.0%
2	5-9	1,514	10,040	5.3%
1	1-4	3,510	7,240	3.8%
0	0	744	0	0.0%
Total		8,290	189,594	100.0%

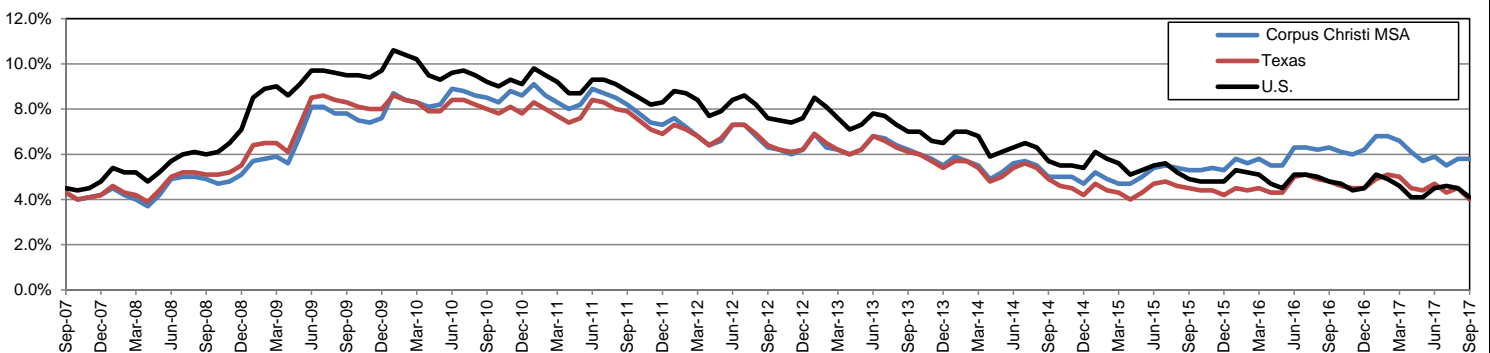
Annual Growth Rate for Total Nonagricultural Employment



Unemployment Information (all estimates in thousands)

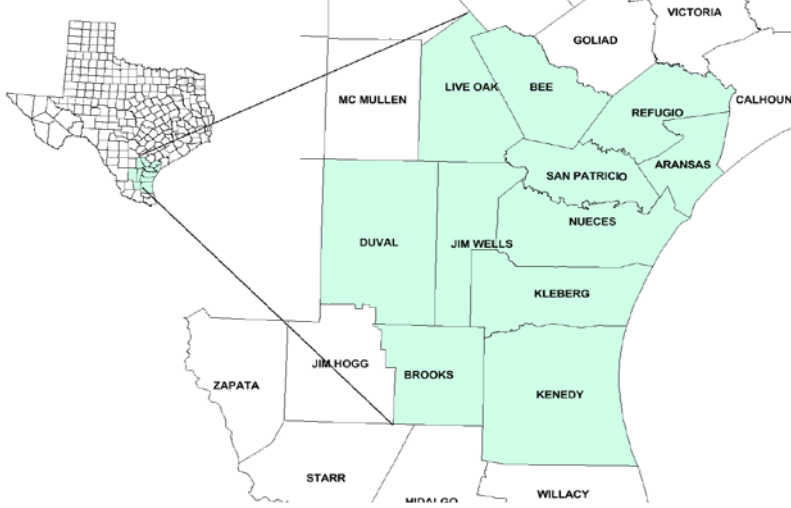
	Corpus Christi MSA				Texas (Actual)				United States (Actual)			
	C.L.F.	Emp.	Unemp.	Rate	C.L.F.	Emp.	Unemp.	Rate	C.L.F.	Emp.	Unemp.	Rate
Sep-17	210.6	198.3	12.3	5.8	13,499.1	12,955.5	543.6	4.0	161,049.0	154,494.0	6,556.0	4.1
Aug-17	208.8	196.7	12.1	5.8	13,406.5	12,801.7	604.8	4.5	160,863.0	153,576.0	7,287.0	4.5
Sep-16	205.2	192.3	12.9	6.3	13,359.7	12,712.7	647.0	4.8	159,636.0	151,977.0	7,658.0	4.8

Historical Unemployment Rates



Coastal Bend Workforce Development Area

September 2017



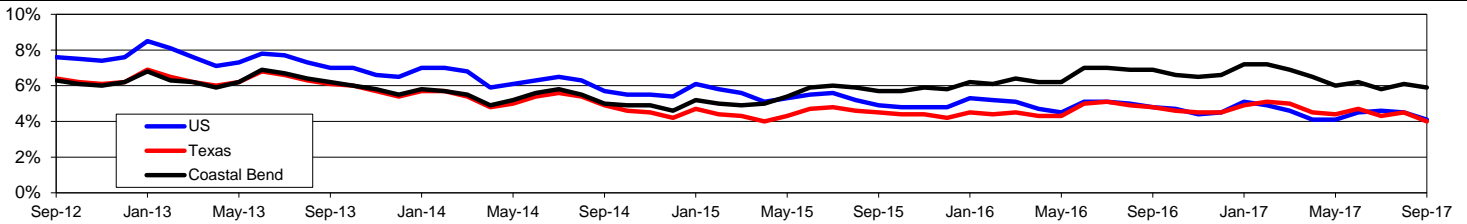
WDA Labor Force Statistics				
	Sep-17	Aug-17	Sep-16	OTY
CLF	264,779	262,388	262,120	2,659
Employed	249,130	246,459	244,124	5,006
Unemployed	15,649	15,929	17,996	-2,347
Rate	5.9%	6.1%	6.9%	-1.0%

Texas Labor Force Statistics				
	Sep-17	Aug-17	Sep-16	OTY
CLF	13,499,113	13,406,493	13,359,661	139,452
Employed	12,955,476	12,801,715	12,712,681	242,795
Unemployed	543,637	604,778	646,980	-103,343
Rate	4.0%	4.5%	4.8%	-0.8%

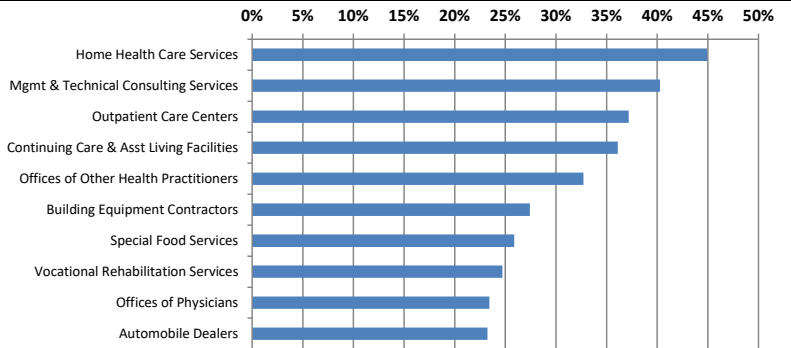
US Labor Force Statistics				
	Sep-17	Aug-17	Sep-16	OTY
CLF	161,049,000	160,863,000	159,636,000	1,413,000
Employed	154,494,000	153,576,000	151,977,000	2,517,000
Unemployed	6,556,000	7,287,000	7,658,000	-1,102,000
Rate	4.1%	4.5%	4.8%	-0.7%

Continued Claims for the Week of the 12th				
	Sep-17	Aug-17	Sep-16	OTY
WDA	4,087	3,212	4,109	-22
Texas	112,682	117,088	133,309	-20,627

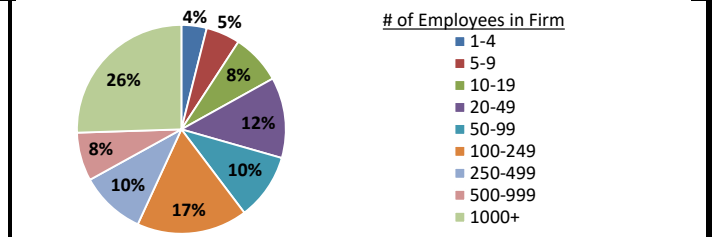
Historical Unemployment Rates



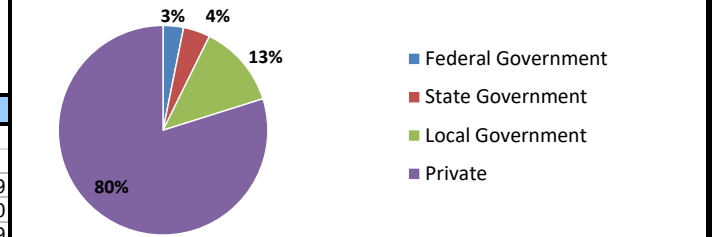
Projected Fastest Growing Industries in WDA (% growth 2014-2024)



Employment by Size Class (1st Quarter 2017)



Employment by Ownership (1st Quarter 2017)



Average Weekly Wage (1st Quarter 2017)

	Q1 2017	Q4 2016	Q1 2016	Change	
				Quarter	Year
WDA	\$879	\$869	\$820	\$10	\$59
Texas	\$1,124	\$1,072	\$1,065	\$52	\$60
US	\$1,111	\$1,067	\$1,042	\$44	\$69

Employment by Industry (1st Quarter 2017, Percent Change)

Industry	Employment	% of total	% Change	
			Quarter	Year
Natural resources and mining	9,791	4.2%	2.8%	-10.3%
Construction	24,664	10.5%	-1.5%	14.8%
Manufacturing	12,514	5.3%	-0.8%	-7.8%
Trade, transportation and utilities	42,786	18.2%	-3.2%	-2.9%
Information	2,139	0.9%	0.1%	-2.2%
Financial activities	9,252	3.9%	-0.4%	-3.8%
Professional and business services	18,412	7.8%	1.1%	-2.4%
Education and health services	66,708	28.4%	-1.2%	1.8%
Leisure and hospitality	30,661	13.0%	0.2%	-0.4%
Other services	6,010	2.6%	-3.8%	-7.2%
Public administration	12,017	5.1%	-1.2%	1.4%
Total	234,954	100.0%	-1.1%	-0.2%

Employment by Industry (1st Quarter 2017)

