

Coastal Bend Workforce Area

(Not Seasonally Adjusted Unemployment Rates by WDA, MSA, & County)

Area	Area Type	Latest Monthly Data August 2017						Previous Monthly Data July 2017				Year Ago August 2016			
		Labor Force	Employment	Unemployment	Rate	M+-	Y+-	Labor Force	Employment	Unemployment	Rate	Labor Force	Employment	Unemployment	Rate
United States	Nation	160,571,000	153,439,000	7,132,000	4.4	0.1	-0.5	160,494,000	153,513,000	6,981,000	4.3	159,508,000	151,655,000	7,853,000	4.9
Texas	State	13,373,443	12,816,501	556,942	4.2	-0.1	-0.5	13,401,397	12,826,959	574,438	4.3	13,290,348	12,662,762	627,586	4.7
Corpus Christi	MSA	208,217	196,107	12,110	5.8	0.3	-0.4	207,937	196,503	11,434	5.5	205,014	192,207	12,807	6.2
Coastal Bend	WDA	261,370	245,446	15,924	6.1	0.3	-0.8	260,957	245,856	15,101	5.8	261,641	243,497	18,144	6.9
Aransas	County	10,097	9,539	558	5.5	0.2	-0.4	10,078	9,543	535	5.3	9,980	9,392	588	5.9
Bee	County	9,721	9,050	671	6.9	0.3	-1.6	9,703	9,065	638	6.6	10,192	9,323	869	8.5
Brooks	County	2,237	2,022	215	9.6	0.4	-2.8	2,238	2,031	207	9.2	2,401	2,103	298	12.4
Duval	County	4,468	4,104	364	8.1	0.4	-3.5	4,451	4,109	342	7.7	4,824	4,264	560	11.6
Jim Wells	County	15,597	14,339	1,258	8.1	0.3	-3.5	15,615	14,404	1,211	7.8	17,016	15,038	1,978	11.6
Kenedy	County	203	196	7	3.4	-0.7	-2.5	196	188	8	4.1	205	193	12	5.9
Kleberg	County	13,140	12,270	870	6.6	0.0	-1.1	13,053	12,195	858	6.6	13,712	12,659	1,053	7.7
Live Oak	County	4,814	4,552	262	5.4	0.3	-1.3	4,796	4,552	244	5.1	5,187	4,842	345	6.7
Nueces	County	167,590	158,283	9,307	5.6	0.4	-0.4	167,438	158,651	8,787	5.2	164,960	155,076	9,884	6.0
Refugio	County	2,973	2,806	167	5.6	0.2	-1.6	2,968	2,809	159	5.4	3,090	2,868	222	7.2
San Patricio	County	30,530	28,285	2,245	7.4	0.5	-0.4	30,421	28,309	2,112	6.9	30,074	27,739	2,335	7.8

(M+-) Change in unemployment rate from last month (Increase) (Decrease)

(Y+-) Change in unemployment rate from last year (Increase) (Decrease)

- Earnings for all occupations Coastal Bend, expressed as hourly rate (TWC):

Coastal Bend	All Occupations-	Average \$18.35/hr.	Entry level \$8.58/hr.	Experienced workers \$23.24/hr.	Top 10% \$33.56/hr.
Texas	All Occupations-	Average \$20.97/hr.	Entry level \$8.88/hr.	Experienced workers \$ 27.02/hr.	Top 10% \$39.64/hr.

- Educational Attainment for population 25 years of age and older - Corpus Christi (Census American Fact Finder/American Community Survey):

Less than 9th grade	8.7%	12th grade & GED	27.7%	Associates degree	7.0%	Graduate or Professional degrees	8.4%
9th thru 11th grade	9.3%	Some College	25.1%	Bachelors degree	13.8%		

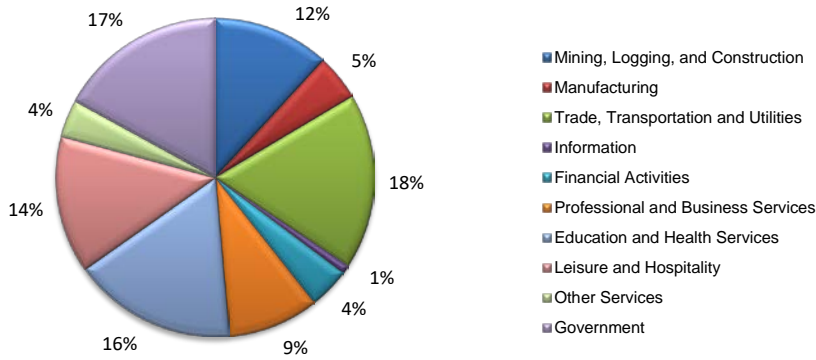
- Median earnings Corpus Christi by education for persons 25 years of age & up (Census AFF/ACS): **\$27,211** (\$36,380 male/ \$22,328 female)

Less than High School	\$15,437	Some College or Associates	\$28,739	Graduate or Professional	\$56,681
High School & GED	\$26,818	Bachelor's	\$44,078		

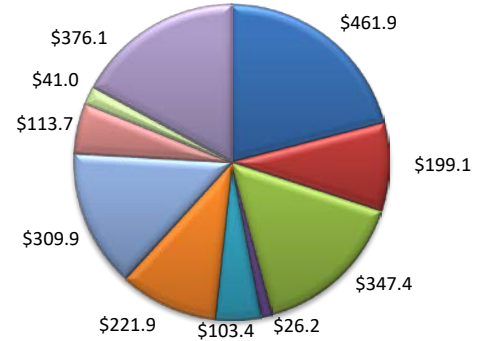
Equal Opportunity Employer/Program. Auxiliary aids and services are available upon request to individuals with disabilities.
Deaf, hard-of-hearing or speech impaired customers may contact **Relay Texas:** 1-800-735-2989 (TDD) and 1-800-735-2988 or 7-1-1 (Voice)

(Aransas, Nueces, San Patricio)

Industry Composition



Wages by Industry (in millions)
1st Quarter 2017



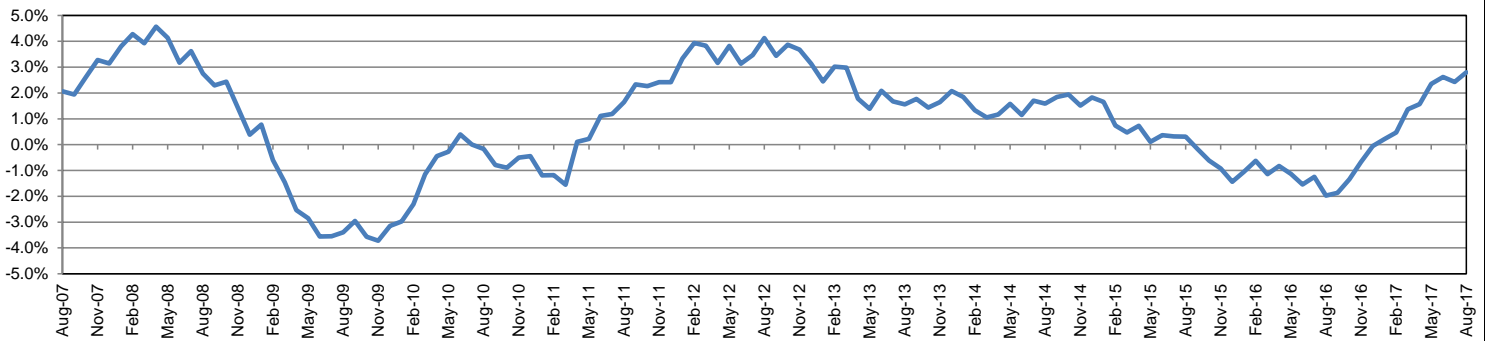
Employment by Industry

				Monthly Change		Annual Change	
	Aug-17	Jul-17	Aug-16	Actual	%	Actual	%
Total Nonfarm	194,600	194,000	189,300	600	0.3%	5,300	2.8%
Mining, Logging, and Construction	23,000	22,700	21,500	300	1.3%	1,500	7.0%
Manufacturing	9,100	8,900	8,700	200	2.3%	400	4.6%
Trade, Transportation, and Utilities	34,600	34,900	34,400	-300	-0.9%	200	0.6%
Information	1,800	1,800	1,900	0	0.0%	-100	-5.3%
Financial Activities	8,100	8,200	7,600	-100	-1.2%	500	6.6%
Professional and Business Services	18,000	17,900	16,500	100	0.6%	1,500	9.1%
Education and Health Services	32,400	31,900	31,500	500	1.6%	900	2.9%
Leisure and Hospitality	27,100	27,300	27,100	-200	-0.7%	0	0.0%
Other Services	7,400	7,500	7,300	-100	-1.3%	100	1.4%
Government	33,100	32,900	32,800	200	0.6%	300	0.9%

Industry Size Class

Size Class	Employees per firm	Number of Firms	January 2017	
			Employment in Size Class	% Total Employment
9	1000+	20	49,579	26.2%
8	500-999	18	12,979	6.8%
7	250-499	48	16,729	8.8%
6	100-249	211	31,833	16.8%
5	50-99	294	20,996	11.1%
4	20-49	815	25,035	13.2%
3	10-19	1,116	15,163	8.0%
2	5-9	1,514	10,040	5.3%
1	1-4	3,510	7,240	3.8%
0	0	744	0	0.0%
Total		8,290	189,594	100.0%

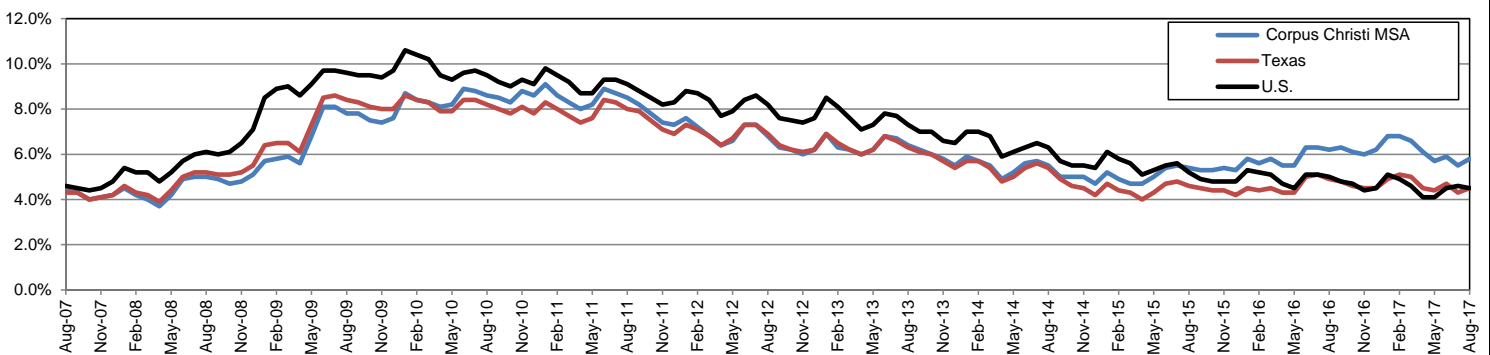
Annual Growth Rate for Total Nonagricultural Employment



Unemployment Information (all estimates in thousands)

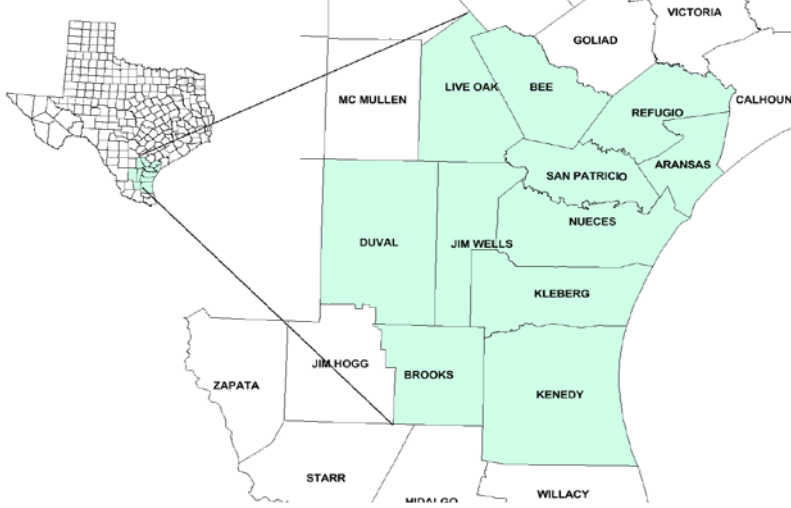
	Corpus Christi MSA				Texas (Actual)				United States (Actual)			
	C.L.F.	Emp.	Unemp.	Rate	C.L.F.	Emp.	Unemp.	Rate	C.L.F.	Emp.	Unemp.	Rate
Aug-17	208.2	196.1	12.1	5.8	13,406.8	12,802.0	604.8	4.5	160,863.0	153,576.0	7,287.0	4.5
Jul-17	207.9	196.5	11.4	5.5	13,434.6	12,850.6	584.0	4.3	161,911.0	154,470.0	7,441.0	4.6
Aug-16	205.0	192.2	12.8	6.2	13,295.2	12,639.0	656.2	4.9	159,800.0	151,804.0	7,996.0	5.0

Historical Unemployment Rates



Coastal Bend Workforce Development Area

August 2017



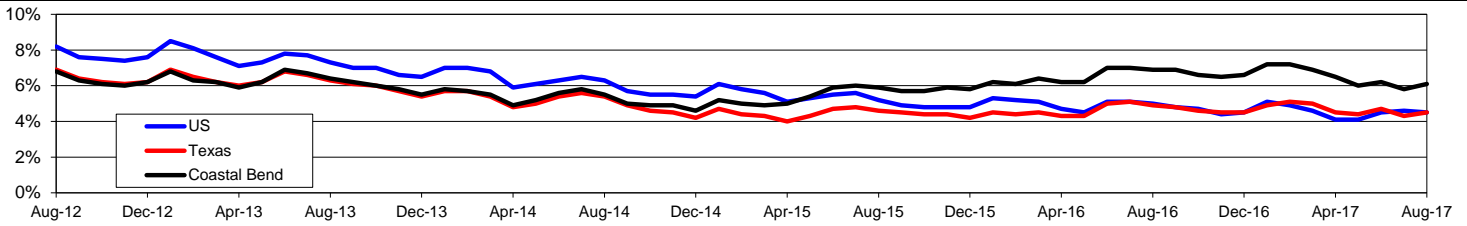
	Aug-17	Jul-17	Aug-16	OTY
CLF	261,370	260,957	261,641	-271
Employed	245,446	245,856	243,497	1,949
Unemployed	15,924	15,101	18,144	-2,220
Rate	6.1%	5.8%	6.9%	-0.8%

	Aug-17	Jul-17	Aug-16	OTY
CLF	13,406,779	13,434,624	13,295,171	111,608
Employed	12,802,022	12,850,647	12,638,955	163,067
Unemployed	604,757	583,977	656,216	-51,459
Rate	4.5%	4.3%	4.9%	-0.4%

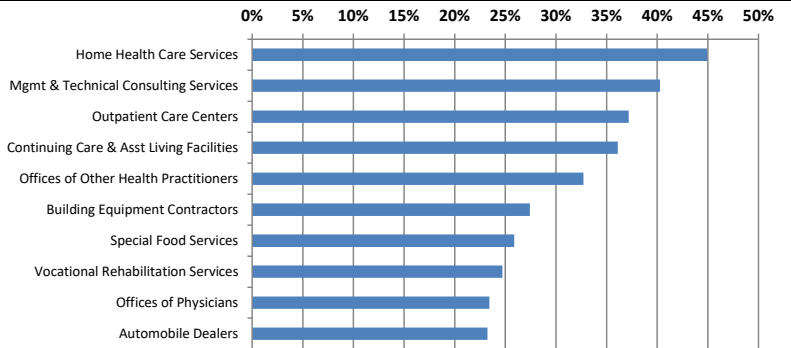
	Aug-17	Jul-17	Aug-16	OTY
CLF	160,863,000	161,911,000	159,800,000	1,063,000
Employed	153,576,000	154,470,000	151,804,000	1,772,000
Unemployed	7,287,000	7,441,000	7,996,000	-709,000
Rate	4.5%	4.6%	5.0%	-0.5%

	Aug-17	Jul-17	Aug-16	OTY
WDA	3,180	3,328	4,584	-1,404
Texas	115,986	124,432	148,897	-32,911

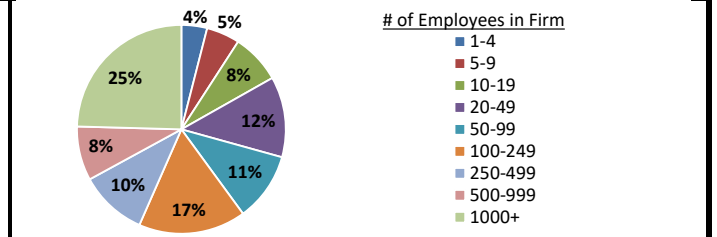
Historical Unemployment Rates



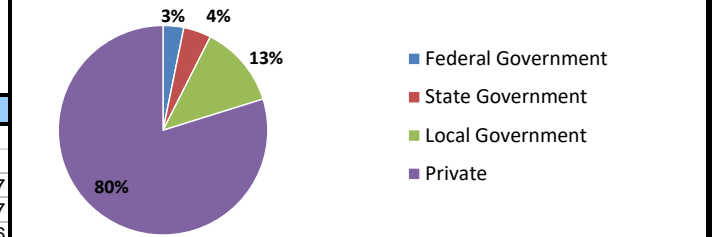
Projected Fastest Growing Industries in WDA (% growth 2014-2024)



Employment by Size Class (4th Quarter 2016)



Employment by Ownership (4th Quarter 2016)



Average Weekly Wage (4th Quarter 2016)

	Q4 2016	Q3 2016	Q4 2015	Change	
				Quarter	Year
WDA	\$869	\$861	\$896	\$8	-\$27
Texas	\$1,072	\$1,042	\$1,099	\$31	-\$27
US	\$1,067	\$1,027	\$1,083	\$40	-\$16

Employment by Industry (4th Quarter 2016, Percent Change)

Industry	Employment	% of total	% Change	
			Quarter	Year
Natural resources and mining	9,535	4.0%	1.3%	-25.2%
Construction	25,042	10.5%	2.3%	22.4%
Manufacturing	12,626	5.3%	-2.6%	-10.1%
Trade, transportation and utilities	44,227	18.6%	0.6%	-4.6%
Information	2,138	0.9%	-2.8%	-12.7%
Financial activities	9,287	3.9%	-0.9%	-10.7%
Professional and business services	18,209	7.7%	0.1%	-4.3%
Education and health services	67,395	28.4%	5.4%	2.7%
Leisure and hospitality	30,623	12.9%	-5.8%	-2.0%
Other services	6,237	2.6%	-3.8%	-8.5%
Public administration	12,223	5.1%	1.5%	3.0%
Total	237,542	100.0%	0.8%	-1.5%

Employment by Industry (4th Quarter 2016)

