

Coastal Bend Workforce Area

(Not Seasonally Adjusted Unemployment Rates by WDA, MSA, & County)

Area	Area Type	Latest Monthly Data September 2014						Previous Monthly Data August 2014				Year Ago September 2013			
		Labor Force	Employment	Unemployment	Rate	M+-	Y+-	Labor Force	Employment	Unemployment	Rate	Labor Force	Employment	Unemployment	Rate
United States	Nation	155,903,000	146,941,000	8,962,000	5.7	-0.6	-1.3	156,434,000	146,647,000	9,787,000	6.3	155,536,000	144,651,000	10,885,000	7.0
Texas	State	13,044,241	12,389,786	654,455	5.0	-0.5	-1.2	13,015,257	12,295,344	719,913	5.5	12,881,866	12,077,824	804,042	6.2
Corpus Christi	MSA	220,973	210,253	10,720	4.9	-0.5	-1.1	220,648	208,825	11,823	5.4	218,680	205,461	13,219	6.0
Coastal Bend	WDA	300,457	286,240	14,217	4.7	-0.6	-1.2	299,824	284,078	15,746	5.3	297,883	280,433	17,450	5.9
Aransas	County	11,227	10,682	545	4.9	-0.3	-1.2	11,195	10,610	585	5.2	11,124	10,439	685	6.2
Bee	County	13,443	12,702	741	5.5	-0.5	-0.9	13,493	12,690	803	6.0	13,851	12,965	886	6.4
Brooks	County	3,430	3,232	198	5.8	-1.8	-1.1	3,464	3,201	263	7.6	3,454	3,214	240	6.9
Duval	County	6,136	5,818	318	5.2	-0.5	-0.7	6,175	5,822	353	5.7	6,149	5,786	363	5.9
Jim Wells	County	24,667	23,659	1,008	4.1	-0.5	-0.9	24,653	23,527	1,126	4.6	24,895	23,639	1,256	5.0
Kenedy	County	281	275	6	2.1	-0.4	-2.6	276	269	7	2.5	275	262	13	4.7
Kleberg	County	18,510	17,697	813	4.4	-0.7	-1.0	18,213	17,289	924	5.1	17,822	16,855	967	5.4
Live Oak	County	7,292	7,060	232	3.2	-0.4	-0.8	7,232	6,973	259	3.6	7,259	6,971	288	4.0
McMullen	County	960	939	21	2.2	0.0	-1.1	927	907	20	2.2	793	767	26	3.3
Nueces	County	180,197	171,745	8,452	4.7	-0.4	-1.1	179,816	170,579	9,237	5.1	178,132	167,831	10,301	5.8
Refugio	County	4,765	4,605	160	3.4	-0.1	-0.7	4,742	4,574	168	3.5	4,705	4,513	192	4.1
San Patricio	County	29,549	27,826	1,723	5.8	-1.0	-1.8	29,638	27,637	2,001	6.8	29,424	27,191	2,233	7.6

(M+-) Change in unemployment rate from last month (Increase) (Decrease)

(Y+-) Change in unemployment rate from last year (Increase) (Decrease)

- Earnings for all occupations Coastal Bend, expressed as hourly rate (TWC):

Coastal Bend	All Occupations-	Average \$18.35/hr.	Entry level \$8.58/hr.	Experienced workers \$23.24/hr.	Top 10% \$33.56/hr.
Texas	All Occupations-	Average \$20.97/hr.	Entry level \$8.88/hr.	Experienced workers \$ 27.02/hr.	Top 10% \$39.64/hr.

- Educational Attainment for population 25 years of age and older - Corpus Christi (Census American Fact Finder/American Community Survey):

Less than 9 th grade	8.7%	12 th grade & GED	27.7%	Associates degree	7.0%	Graduate or Professional degrees	8.4%
9 th thru 11 th grade	9.3%	Some College	25.1%	Bachelors degree	13.8%		

- Median earnings Corpus Christi by education for persons 25 years of age & up (Census AFF/ACS): **\$27,211** (\$36,380 male/ \$22,328 female)

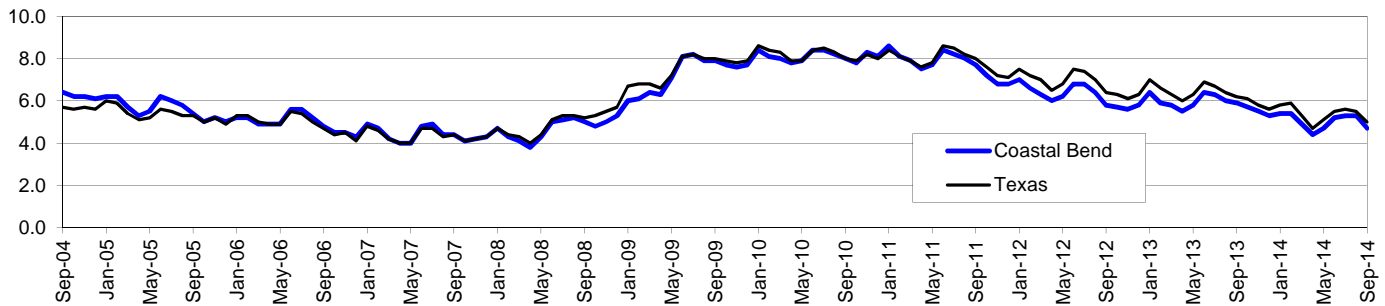
Less than High School	\$15,437	Some College or Associates	\$28,739	Graduate or Professional	\$56,681
High School & GED	\$26,818	Bachelor's	\$44,078		

Coastal Bend Workforce Development Area*

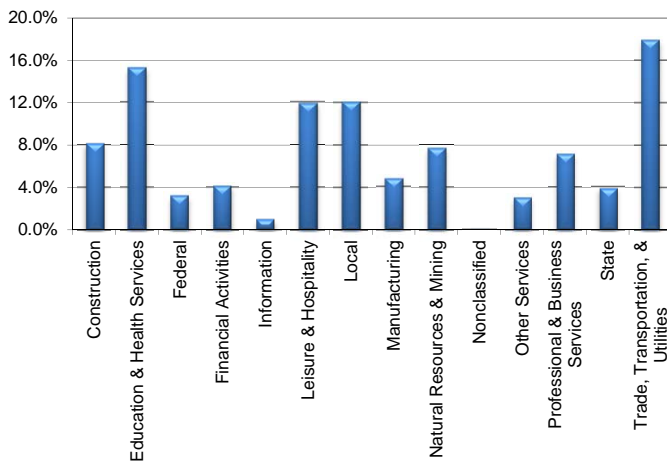
September 2014

Coastal Bend WDA					Texas				
	CLF	Employed	Unemployed	Rate		CLF	Employed	Unemployed	Rate
Sep-14	300,457	286,240	14,217	4.7	Sep-14	13,044,241	12,389,786	654,455	5.0
Aug-14	299,824	284,078	15,746	5.3	Aug-14	13,015,257	12,295,344	719,913	5.5
Sep-13	297,883	280,433	17,450	5.9	Sep-13	12,881,866	12,077,824	804,042	6.2

Historical Unemployment Rates



Coastal Bend WDA Industry Composition 1st Quarter 2014



Total WDA Claims

Continued Claims for the Week of the 12th

	Sep-14	Aug-14	Sep-13	OTY
Continued	2,199	2,558	2,727	-528

Texas Unemployment Insurance Claims

Continued Claims for the Week of the 12th

	Sep-14	Aug-14	Sep-13	OTY
Continued	104,452	117,607	123,393	-18,941

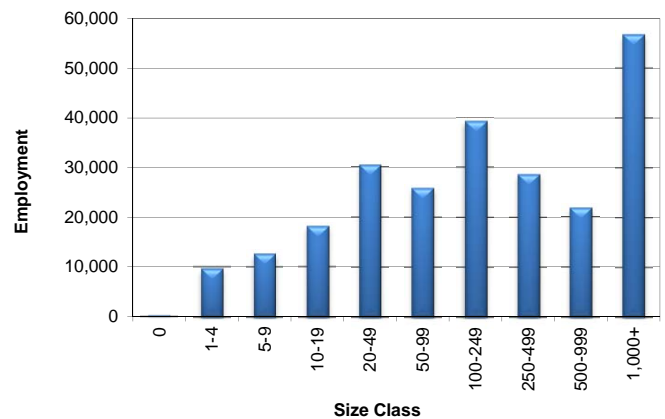
Coastal Bend WDA Average Weekly Wage

	Coastal Bend	Texas
1st Quarter 2014	\$855.76	\$1,062.65
4th Quarter 2013	\$860.03	\$1,026.57
1st Quarter 2013	\$820.96	\$1,015.27
Quarter Change	-\$4.27	\$36.08
OTY Change	\$34.80	\$47.38

NAICS Covered Employment Quarterly Data 1st Quarter 2014

SUPER SECTOR	Employment	Change	
		Quarter	Year
Construction	19,785	169	1,731
Education & Health Services	37,068	-999	-1,121
Federal	7,768	-235	-401
Financial Activities	10,099	13	265
Information	2,351	-45	19
Leisure & Hospitality	28,897	-102	466
Local	29,375	-73	308
Manufacturing	11,573	24	137
Natural Resources & Mining	18,671	-186	157
Nonclassified	37	-5	-6
Other Services	7,312	46	272
Professional & Business Services	17,300	-270	-361
State	9,403	-52	-162
Trade, Transportation, & Utilities	43,601	-209	1,891
TOTAL	243,240	-1,924	3,195

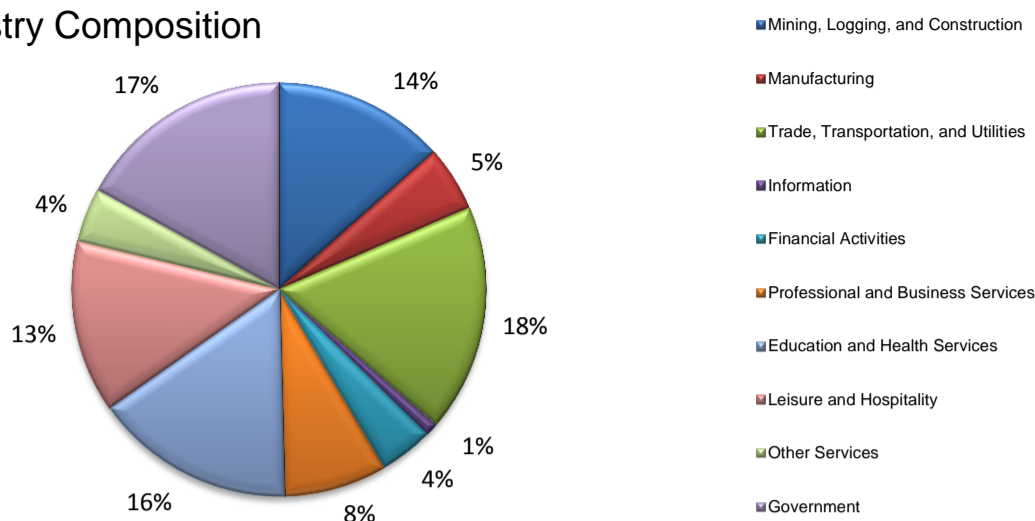
Size Class Employment Composition 1st Quarter 2014



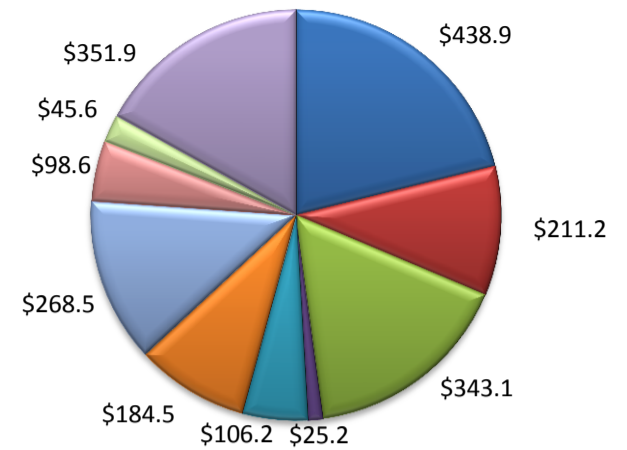
*Counties in WDA: Aransas, Bee, Brooks, Duval, Jim Wells, Kenedy, Kleberg, Live Oak, McMullen, Nueces, Refugio, & San Patricio

(Aransas, Nueces, San Patricio)

Industry Composition



Wages by Industry (in millions)
1st Quarter 2014



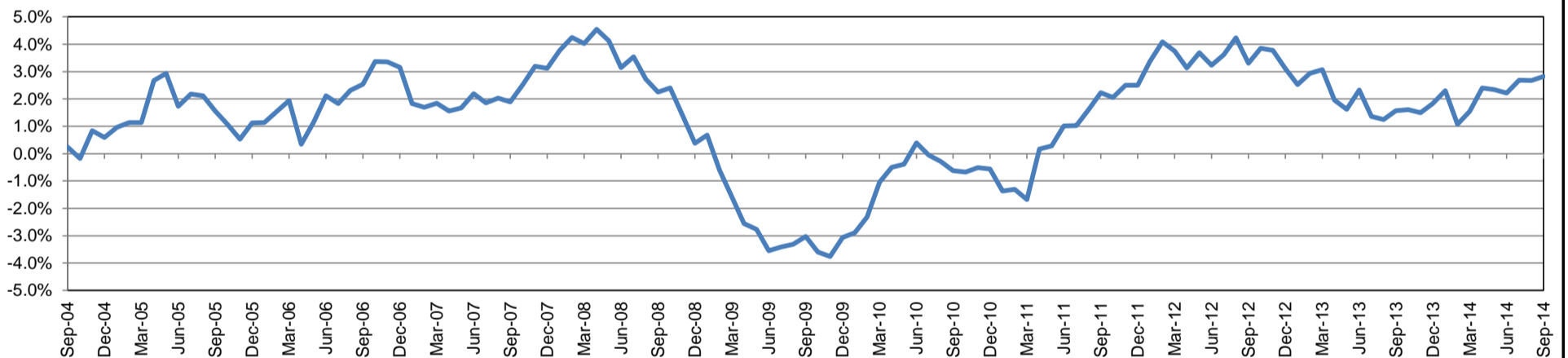
Employment by Industry

	Sep-14	Aug-14	Sep-13	Monthly Change		Annual Change	
				Actual	%	Actual	%
Total Nonfarm	192,900	192,200	187,600	700	0.4%	5,300	2.8%
Mining, Logging, and Construction	26,000	25,700	24,000	300	1.2%	2,000	8.3%
Manufacturing	9,800	9,800	9,700	0	0.0%	100	1.0%
Trade, Transportation, and Utilities	34,200	34,500	33,800	-300	-0.9%	400	1.2%
Information	2,000	2,100	2,000	-100	-4.8%	0	0.0%
Financial Activities	8,100	8,000	7,900	100	1.3%	200	2.5%
Professional and Business Services	15,600	15,700	15,400	-100	-0.6%	200	1.3%
Education and Health Services	30,200	30,300	29,600	-100	-0.3%	600	2.0%
Leisure and Hospitality	26,000	26,600	24,400	-600	-2.3%	1,600	6.6%
Other Services	8,200	8,200	7,800	0	0.0%	400	5.1%
Government	32,800	31,300	33,000	1,500	4.8%	-200	-0.6%

Industry Size Class

Size Class	Employees per firm	Number of Firms	March 2014	
			Employment in Size Class	% Total Employment
9	1000+	20	43,256	23.1%
8	500-999	25	16,476	8.8%
7	250-499	53	18,163	9.7%
6	100-249	215	32,105	17.1%
5	50-99	309	21,502	11.5%
4	20-49	799	24,093	12.9%
3	10-19	1,059	14,392	7.7%
2	5-9	1,528	10,103	5.4%
1	1-4	3,589	7,404	3.9%
0	0	571	0	0.0%
Total		8,168	187,494	100.0%

Annual Growth Rate for Total Nonagricultural Employment



Unemployment Information (all estimates in thousands)

	Corpus Christi MSA				Texas (Actual)				United States (Actual)			
	C.L.F.	Emp.	Unemp.	Rate	C.L.F.	Emp.	Unemp.	Rate	C.L.F.	Emp.	Unemp.	Rate
Sep-14	221.0	210.3	10.7	4.9	13,044.3	12,389.8	654.5	5.0	155,903.0	146,941.0	8,962.0	5.7
Aug-14	220.6	208.8	11.8	5.4	13,015.2	12,295.3	719.9	5.5	156,434.0	146,647.0	9,787.0	6.3
Sep-13	218.7	205.5	13.2	6.0	12,881.8	12,077.8	804.0	6.2	155,536.0	144,651.0	10,885.0	7.0

Historical Unemployment Rates

