

Coastal Bend Workforce Area

Area		Latest Monthly Data						Previous Monthly Data				Year Ago			
Area	Type	September 2012						August 2012				September 2011			
		Labor Force	Employment	Unemployment	Rate	M+-	Y+-	Labor Force	Employment	Unemployment	Rate	Labor Force	Employment	Unemployment	Rate
United States	Nation	155,075,000	143,333,000	11,742,000	7.6	-0.6	-1.2	155,254,000	142,558,000	12,696,000	8.2	154,022,000	140,502,000	13,520,000	8.8
Texas	State	12,642,436	11,840,384	802,052	6.3	-0.7	-1.7	12,625,263	11,738,126	887,137	7.0	12,525,570	11,523,010	1,002,560	8.0
Corpus Christi	MSA	221,658	208,662	12,996	5.9	-0.6	-1.9	220,932	206,537	14,395	6.5	218,980	201,915	17,065	7.8
Coastal Bend	WDA	299,217	282,183	17,034	5.7	-0.7	-1.9	297,402	278,437	18,965	6.4	293,562	271,183	22,379	7.6
Aransas	County	11,167	10,524	643	5.8	-0.4	-2.2	11,110	10,417	693	6.2	11,072	10,183	889	8.0
Bee	County	12,908	12,072	836	6.5	-0.8	-2.2	12,736	11,811	925	7.3	12,640	11,537	1,103	8.7
Brooks	County	3,310	3,088	222	6.7	-1.6	-2.2	3,325	3,049	276	8.3	3,405	3,101	304	8.9
Duval	County	5,804	5,435	369	6.4	-0.7	-2.3	5,723	5,317	406	7.1	5,664	5,173	491	8.7
Jim Wells	County	25,307	24,144	1,163	4.6	-0.7	-2.0	24,987	23,672	1,315	5.3	23,585	22,034	1,551	6.6
Kenedy	County	269	258	11	4.1	-1.2	-3.4	264	250	14	5.3	266	246	20	7.5
Kleberg	County	18,202	17,251	951	5.2	-1.0	-1.6	17,813	16,714	1,099	6.2	17,641	16,435	1,206	6.8
Live Oak	County	6,577	6,304	273	4.2	-0.4	-1.3	6,490	6,193	297	4.6	6,372	6,020	352	5.5
McMullen	County	672	657	15	2.2	-0.6	-1.8	636	618	18	2.8	577	554	23	4.0
Nueces	County	180,543	170,286	10,257	5.7	-0.7	-1.9	180,002	168,552	11,450	6.4	178,257	164,780	13,477	7.6
Refugio	County	4,509	4,311	198	4.4	-0.5	-1.6	4,495	4,275	220	4.9	4,432	4,168	264	6.0
San Patricio	County	29,949	27,853	2,096	7.0	-0.6	-2.1	29,821	27,569	2,252	7.6	29,651	26,952	2,699	9.1

(M+-) Change in unemployment rate from last month (Increase) (Decrease)

(Y+-) Change in unemployment rate from last year (Increase) (Decrease)

- Earnings for all occupations Coastal Bend, expressed as hourly rate (TWC):

Coastal Bend	All Occupations-	Average \$17.28/hr.	Entry level \$8.30/hr.	Experienced workers \$21.77/hr.	Top 10% \$31.60/hr.
Texas	All Occupations-	Average \$20.30/hr.	Entry level \$9.62/hr.	Experienced workers \$ 25.68/hr.	Top 10% \$37.83/hr.

- Educational Attainment for population 25 years of age and older - Corpus Christi (Census American Fact Finder/American Community Survey):

Less than 9 th grade	9.3%	12 th grade & GED	26.7%	Associates degree	7.4%	Graduate or Professional degrees	7.0%
9 th thru 11 th grade	11.8%	Some College	24.7%	Bachelors degree	13.0%		

- Median earnings Corpus Christi by education for persons 25 years of age & up (Census AFF/ACS): \$27,211 (\$36,380 male/ \$22,328 female)

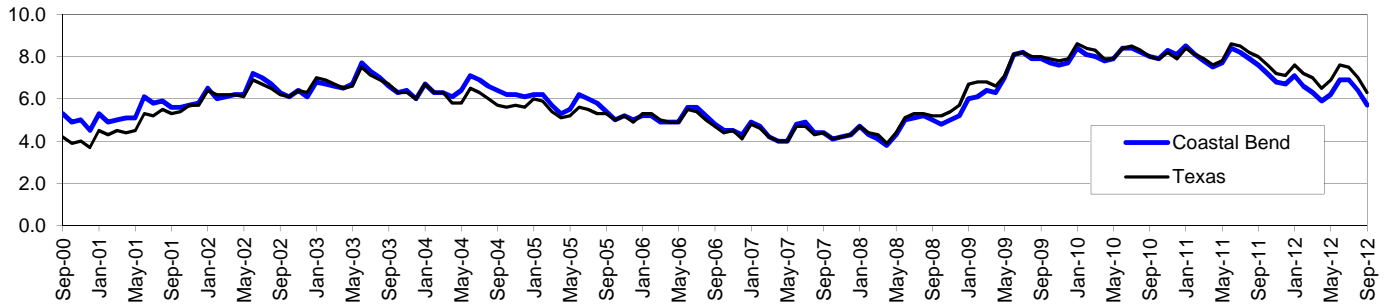
Less than High School	\$15,545	Some College or Associates	\$31,460	Graduate or Professional	\$54,717
High School & GED	\$23,028	Bachelor's	\$43,005		

Coastal Bend Workforce Development Area*

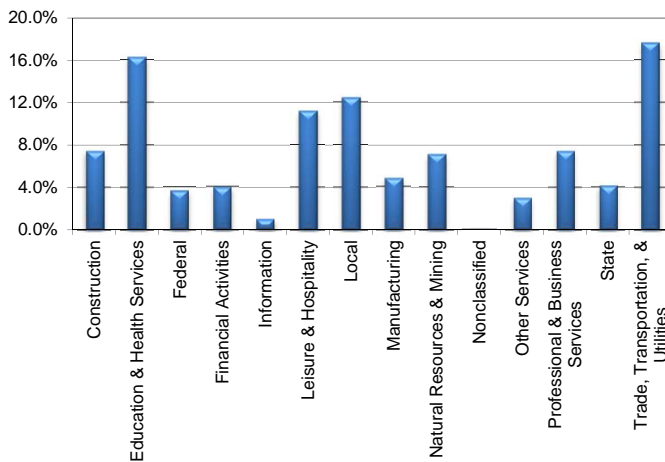
September 2012

Coastal Bend WDA					Texas				
	CLF	Employed	Unemployed	Rate		CLF	Employed	Unemployed	Rate
Sep-12	299,217	282,183	17,034	5.7	Sep-12	12,642,436	11,840,384	802,052	6.3
Aug-12	297,402	278,437	18,965	6.4	Aug-12	12,625,263	11,738,126	887,137	7.0
Sep-11	293,562	271,183	22,379	7.6	Sep-11	12,525,570	11,523,010	1,002,560	8.0

Historical Unemployment Rates



Coastal Bend WDA Industry Composition 1st Quarter 2012



Total WDA Claims

Continued Claims for the Week of the 12th

	Sep-12	Aug-12	Sep-11	OTY
Continued	2,307	2,515	2,708	-401

Texas Unemployment Insurance Claims

Continued Claims for the Week of the 12th

	Sep-12	Aug-12	Sep-11	OTY
Continued	125,046	135,191	139,763	-14,717

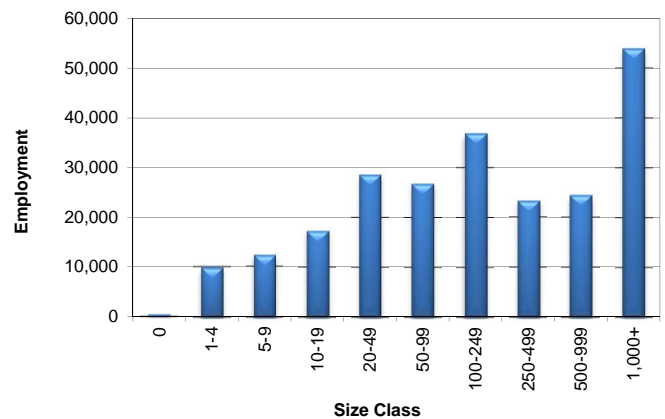
Coastal Bend WDA Average Weekly Wage

	Coastal Bend	Texas
1st Quarter 2012	\$811.68	\$1,012.73
4th Quarter 2011	\$820.49	\$972.66
1st Quarter 2011	\$731.23	\$944.26
Quarter Change	-\$8.81	\$40.07
OTY Change	\$80.45	\$68.47

NAICS Covered Employment Quarterly Data 1st Quarter 2012

SUPER SECTOR	Employment	Change	
		Quarter	Year
Construction	17,294	-950	1,134
Education & Health Services	37,908	-2,072	-963
Federal	8,574	-36	54
Financial Activities	9,280	-132	292
Information	2,296	23	23
Leisure & Hospitality	26,032	423	1,631
Local	28,965	-65	-1,314
Manufacturing	11,198	-26	805
Natural Resources & Mining	16,486	663	3,432
Nonclassified	63	38	26
Other Services	6,919	521	661
Professional & Business Services	17,328	448	350
State	9,714	-312	-1,029
Trade, Transportation, & Utilities	41,070	-71	2,966
TOTAL	233,127	-1,548	8,068

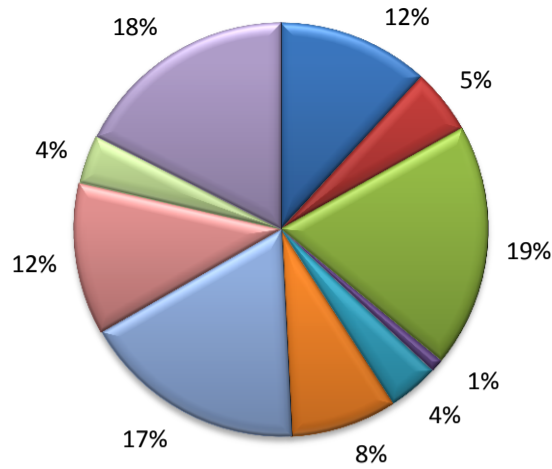
Size Class Employment Composition 1st Quarter 2012



*Counties in WDA: Aransas, Bee, Brooks, Duval, Jim Wells, Kenedy, Kleberg, Live Oak, McMullen, Nueces, Refugio, & San Patricio

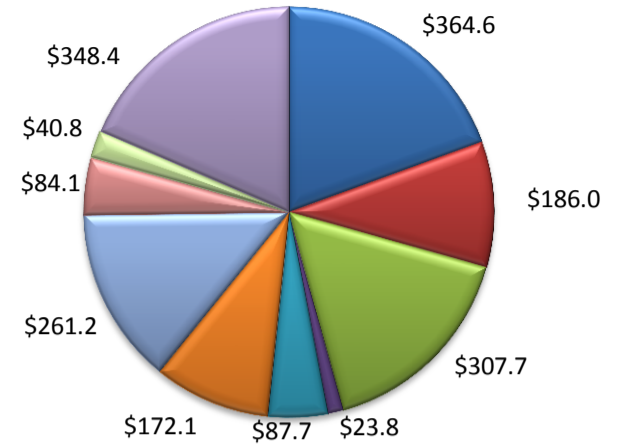
(Aransas, Nueces, San Patricio)

Industry Composition



- Mining, Logging, and Construction
- Manufacturing
- Trade, Transportation, and Utilities
- Information
- Financial Activities
- Professional and Business Services
- Education and Health Services
- Leisure and Hospitality
- Other Services
- Government

Wages by Industry (in millions)
1st Quarter 2012



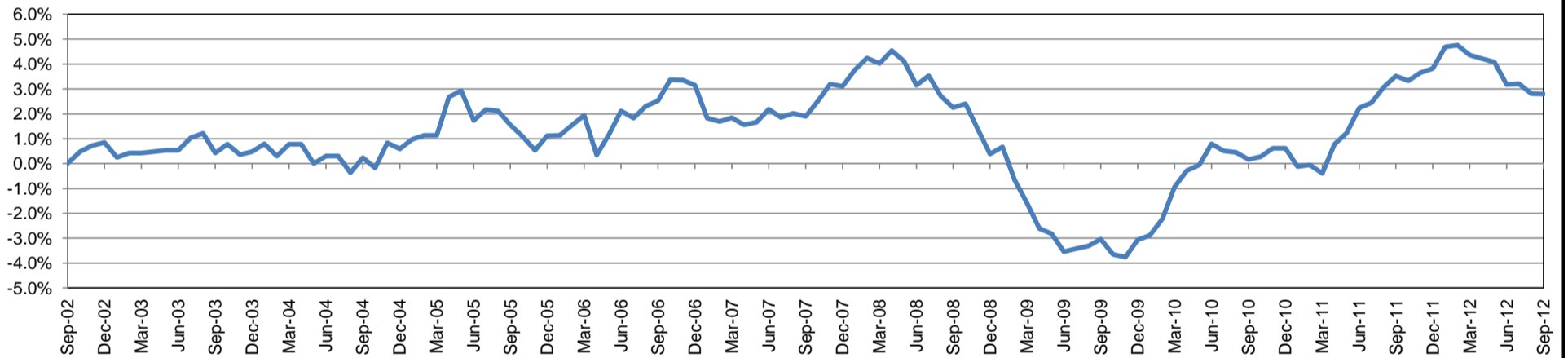
Employment by Industry

	Sep-12	Aug-12	Sep-11	Monthly Change		Annual Change	
				Actual	%	Actual	%
Total Nonfarm	187,600	186,400	182,500	1,200	0.6%	5,100	2.8%
Mining, Logging, and Construction	22,100	22,300	21,200	-200	-0.9%	900	4.3%
Manufacturing	9,600	9,500	9,500	100	1.1%	100	1.1%
Trade, Transportation, and Utilities	35,700	35,700	33,600	0	0.0%	2,100	6.3%
Information	1,900	1,900	2,000	0	0.0%	-100	-5.0%
Financial Activities	7,400	7,400	7,400	0	0.0%	0	0.0%
Professional and Business Services	15,600	15,500	15,200	100	0.7%	400	2.6%
Education and Health Services	32,900	32,600	32,000	300	0.9%	900	2.8%
Leisure and Hospitality	22,200	22,700	21,600	-500	-2.2%	600	2.8%
Other Services	7,200	7,200	7,000	0	0.0%	200	2.9%
Government	33,000	31,600	33,000	1,400	4.4%	0	0.0%

Industry Size Class

Size Class	Employees per firm	Number of Firms	March 2012		
			Employment in Size Class	% Total Employment	
9	1000+	16	40,535	22.6%	
8	500-999	27	19,001	10.6%	
7	250-499	45	14,662	8.2%	
6	100-249	186	28,687	16.0%	
5	50-99	311	22,130	12.4%	
4	20-49	740	22,682	12.7%	
3	10-19	1,030	14,010	7.8%	
2	5-9	1,483	9,872	5.5%	
1	1-4	3,622	7,584	4.2%	
0	0	563	0	0.0%	
Total			8,023	179,163	100.0%

Annual Growth Rate for Total Nonagricultural Employment



Unemployment Information (all estimates in thousands)

	Corpus Christi MSA				Texas (Actual)				United States (Actual)			
	C.L.F.	Emp.	Unemp.	Rate	C.L.F.	Emp.	Unemp.	Rate	C.L.F.	Emp.	Unemp.	Rate
Sep-12	221.7	208.7	13.0	5.9	12,642.5	11,840.4	802.1	6.3	155,075.0	143,333.0	11,742.0	7.6
Aug-12	220.9	206.5	14.4	6.5	12,625.2	11,738.1	887.1	7.0	155,254.0	142,558.0	12,696.0	8.2
Sep-11	219.0	201.9	17.1	7.8	12,525.6	11,523.0	1,002.6	8.0	154,022.0	140,502.0	13,520.0	8.8

Historical Unemployment Rates

