

Coastal Bend Workforce Area

(Not Seasonally Adjusted Unemployment Rates by WDA, MSA, & County)

Area	Area Type	Latest Monthly Data October 2013						Previous Monthly Data September 2013				Year Ago October 2012			
		Labor Force	Employment	Unemployment	Rate	M+-	Y+-	Labor Force	Employment	Unemployment	Rate	Labor Force	Employment	Unemployment	Rate
United States	Nation	154,918,000	144,144,000	10,773,000	7.0	0.0	-0.5	155,536,000	144,651,000	10,885,000	7.0	154,779,000	144,039,000	11,741,000	7.5
Texas	State	12,784,059	12,013,884	770,175	6.0	-0.3	-0.2	12,833,728	12,024,405	809,323	6.3	12,667,703	11,882,228	785,475	6.2
Corpus Christi	MSA	222,357	209,773	12,584	5.7	-0.3	-0.1	222,563	209,248	13,315	6.0	218,130	205,572	12,558	5.8
Coastal Bend	WDA	301,006	284,398	16,608	5.5	-0.4	-0.1	300,896	283,286	17,610	5.9	296,431	279,909	16,522	5.6
Aransas	County	11,248	10,597	651	5.8	-0.3	0.4	11,258	10,570	688	6.1	10,975	10,385	590	5.4
Bee	County	13,322	12,480	842	6.3	-0.4	-0.1	13,343	12,449	894	6.7	12,974	12,140	834	6.4
Brooks	County	3,429	3,202	227	6.6	-0.6	0.3	3,410	3,165	245	7.2	3,357	3,144	213	6.3
Duval	County	6,139	5,788	351	5.7	-0.2	-0.3	6,186	5,818	368	5.9	5,963	5,607	356	6.0
Jim Wells	County	24,882	23,694	1,188	4.8	-0.3	0.4	24,869	23,600	1,269	5.1	25,771	24,628	1,143	4.4
Kenedy	County	275	265	10	3.6	-1.2	1.0	273	260	13	4.8	268	261	7	2.6
Kleberg	County	17,876	16,942	934	5.2	-0.4	-0.2	17,648	16,656	992	5.6	17,684	16,734	950	5.4
Live Oak	County	7,199	6,932	267	3.7	-0.4	0.0	7,136	6,845	291	4.1	7,066	6,804	262	3.7
McMullen	County	834	808	26	3.1	-0.3	0.9	787	760	27	3.4	683	668	15	2.2
Nueces	County	181,224	171,421	9,803	5.4	-0.3	-0.2	181,372	170,992	10,380	5.7	177,957	167,988	9,969	5.6
Refugio	County	4,693	4,514	179	3.8	-0.4	-0.3	4,681	4,485	196	4.2	4,535	4,351	184	4.1
San Patricio	County	29,885	27,755	2,130	7.1	-0.4	0.3	29,933	27,686	2,247	7.5	29,198	27,199	1,999	6.8

(M+-) Change in unemployment rate from last month (Increase) (Decrease)

(Y+-) Change in unemployment rate from last year (Increase) (Decrease)

- Earnings for all occupations Coastal Bend, expressed as hourly rate (TWC):

Coastal Bend	All Occupations-	Average \$18.35/hr.	Entry level \$8.58/hr.	Experienced workers \$23.24/hr.	Top 10% \$33.56/hr.
Texas	All Occupations-	Average \$20.97/hr.	Entry level \$8.88/hr.	Experienced workers \$ 27.02/hr.	Top 10% \$39.64/hr.

- Educational Attainment for population 25 years of age and older - Corpus Christi (Census American Fact Finder/American Community Survey):

Less than 9 th grade	9.6%	12 th grade & GED	26.9%	Associates degree	6.9%	Graduate or Professional degrees	7.0%
9 th thru 11 th grade	11.2%	Some College	25.8%	Bachelors degree	12.6%		

- Median earnings Corpus Christi by education for persons 25 years of age & up (Census AFF/ACS): **\$27,211** (\$36,380 male/ \$22,328 female)

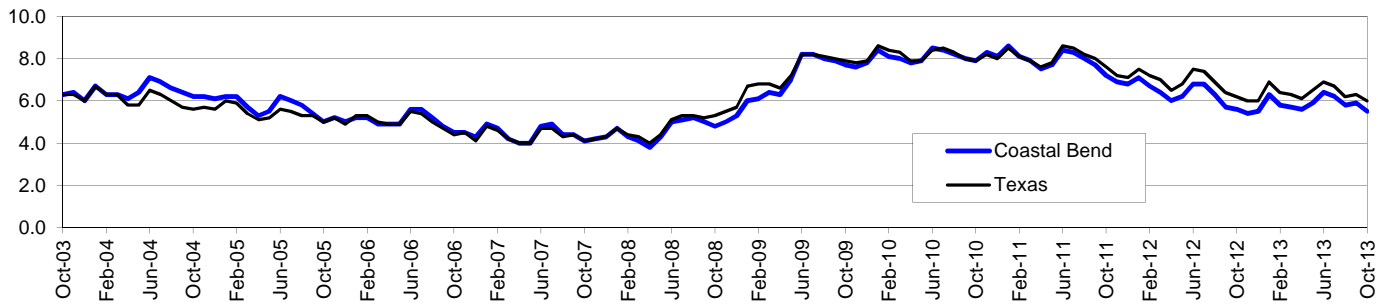
Less than High School	\$17,318	Some College or Associates	\$31,393	Graduate or Professional	\$55,582
High School & GED	\$25,804	Bachelor's	\$45,812		

Coastal Bend Workforce Development Area*

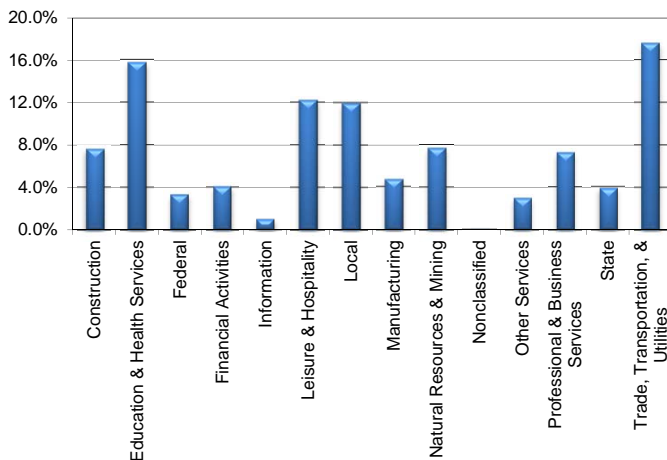
October 2013

Coastal Bend WDA					Texas				
	CLF	Employed	Unemployed	Rate		CLF	Employed	Unemployed	Rate
Oct-13	301,006	284,398	16,608	5.5	Oct-13	12,784,059	12,013,884	770,175	6.0
Sep-13	300,896	283,286	17,610	5.9	Sep-13	12,833,728	12,024,405	809,323	6.3
Oct-12	296,431	279,909	16,522	5.6	Oct-12	12,667,703	11,882,228	785,475	6.2

Historical Unemployment Rates



Coastal Bend WDA Industry Composition 2nd Quarter 2013



Total WDA Claims

Continued Claims for the Week of the 12th

	Oct-13	Sep-13	Oct-12	OTY
Continued	2,577	2,726	2,310	267

Texas Unemployment Insurance Claims

Continued Claims for the Week of the 12th

	Oct-13	Sep-13	Oct-12	OTY
Continued	118,402	123,215	123,246	-4,844

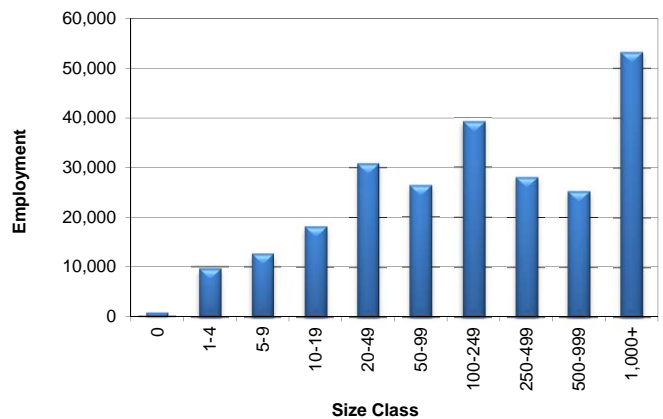
Coastal Bend WDA Average Weekly Wage

	Coastal Bend	Texas
2nd Quarter 2013	\$799.41	\$943.61
1st Quarter 2013	\$820.96	\$1,015.23
2nd Quarter 2012	\$792.86	\$922.03
Quarter Change	-\$21.55	-\$71.62
OTY Change	\$6.55	\$21.58

NAICS Covered Employment Quarterly Data 2nd Quarter 2013

SUPER SECTOR	Employment	Change	
		Quarter	Year
Construction	18,570	516	180
Education & Health Services	38,440	251	46
Federal	8,124	-45	-489
Financial Activities	9,990	156	521
Information	2,383	51	79
Leisure & Hospitality	29,817	1,386	1,746
Local	29,147	80	-28
Manufacturing	11,448	12	78
Natural Resources & Mining	18,745	231	1,235
Nonclassified	62	16	34
Other Services	7,262	222	91
Professional & Business Services	17,662	1	61
State	9,457	-108	-19
Trade, Transportation, & Utilities	42,918	1,210	1,607
TOTAL	244,025	3,979	5,142

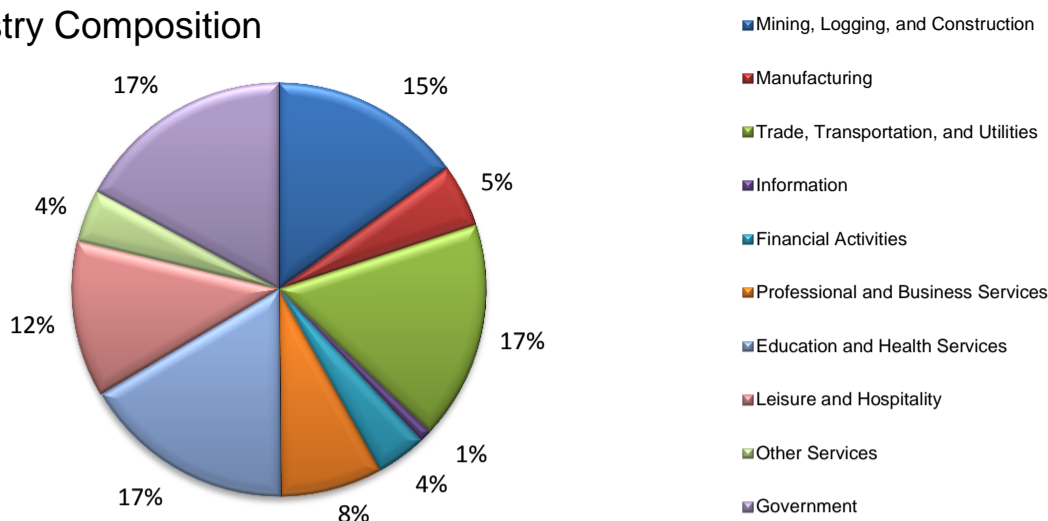
Size Class Employment Composition 2nd Quarter 2013



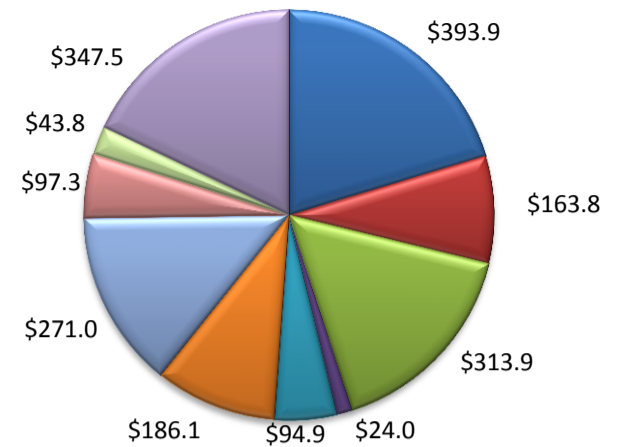
*Counties in WDA: Aransas, Bee, Brooks, Duval, Jim Wells, Kenedy, Kleberg, Live Oak, McMullen, Nueces, Refugio, & San Patricio

(Aransas, Nueces, San Patricio)

Industry Composition



Wages by Industry (in millions)
2nd Quarter 2013



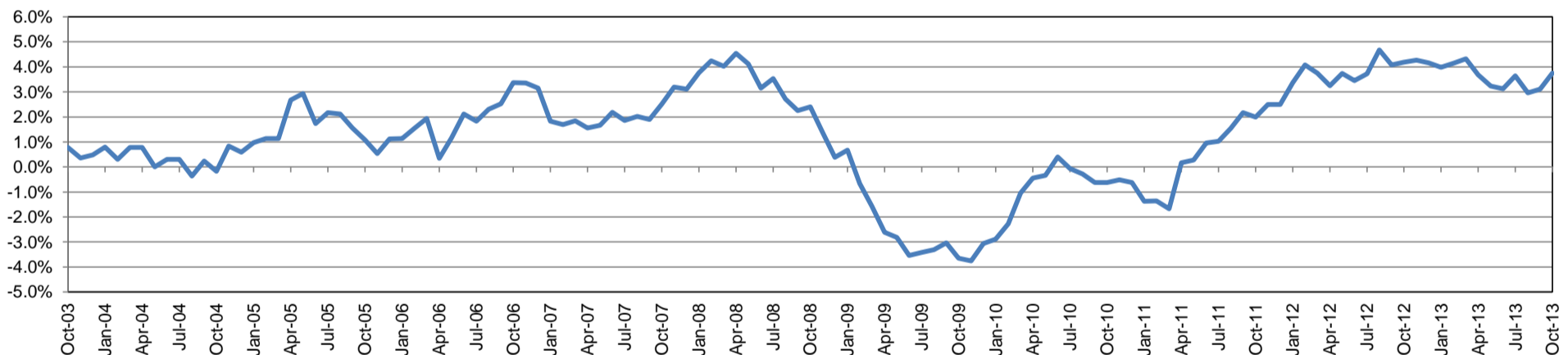
Employment by Industry

	Oct-13	Sep-13	Oct-12	Monthly Change		Annual Change	
				Actual	%	Actual	%
Total Nonfarm	193,700	191,800	186,700	1,900	1.0%	7,000	3.8%
Mining, Logging, and Construction	29,100	27,700	24,900	1,400	5.1%	4,200	16.9%
Manufacturing	9,600	9,600	9,900	0	0.0%	-300	-3.0%
Trade, Transportation, and Utilities	33,000	33,000	32,300	0	0.0%	700	2.2%
Information	1,900	1,900	2,100	0	0.0%	-200	-9.5%
Financial Activities	7,600	7,700	7,600	-100	-1.3%	0	0.0%
Professional and Business Services	15,400	15,200	15,300	200	1.3%	100	0.7%
Education and Health Services	32,200	32,100	30,800	100	0.3%	1,400	4.6%
Leisure and Hospitality	23,700	24,200	22,800	-500	-2.1%	900	4.0%
Other Services	8,000	8,000	7,900	0	0.0%	100	1.3%
Government	33,200	32,400	33,100	800	2.5%	100	0.3%

Industry Size Class

Size Class	Employees per firm	Number of Firms	June 2013		
			Employment in Size Class	% Total Employment	
9	1000+	17	41,029	22.0%	
8	500-999	26	17,601	9.4%	
7	250-499	55	18,322	9.8%	
6	100-249	210	31,636	16.9%	
5	50-99	308	21,707	11.6%	
4	20-49	811	24,525	13.1%	
3	10-19	1,063	14,437	7.7%	
2	5-9	1,515	10,017	5.4%	
1	1-4	3,559	7,437	4.0%	
0	0	541	0	0.0%	
Total			8,105	186,711	100.0%

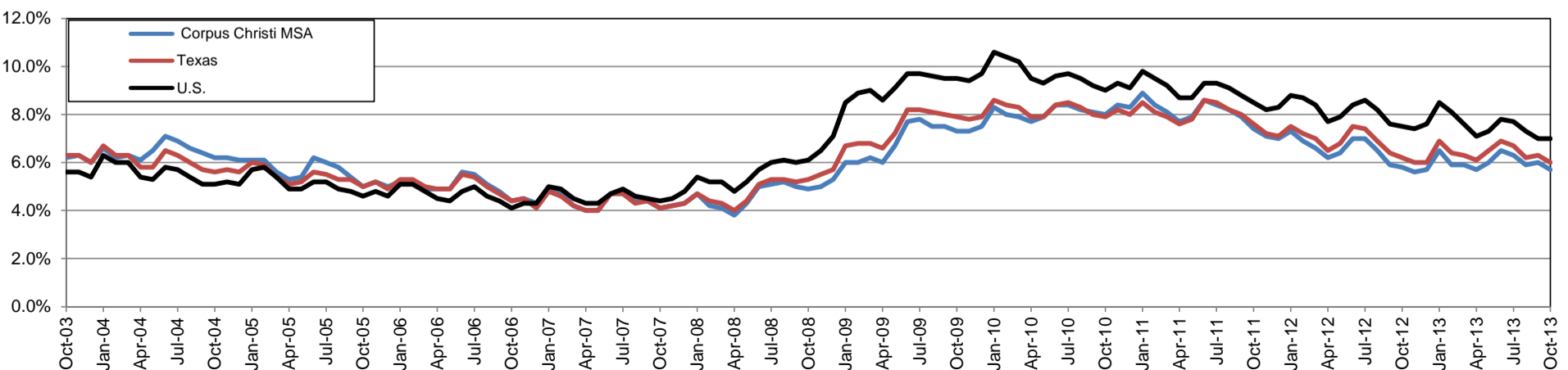
Annual Growth Rate for Total Nonagricultural Employment



Unemployment Information (all estimates in thousands)

	Corpus Christi MSA				Texas (Actual)				United States (Actual)			
	C.L.F.	Emp.	Unemp.	Rate	C.L.F.	Emp.	Unemp.	Rate	C.L.F.	Emp.	Unemp.	Rate
Oct-13	222.4	209.8	12.6	5.7	12,784.1	12,013.9	770.2	6.0	154,918.0	144,144.0	10,773.0	7.0
Sep-13	222.5	209.2	13.3	6.0	12,833.7	12,024.4	809.3	6.3	155,536.0	144,651.0	10,885.0	7.0
Oct-12	218.2	205.6	12.6	5.8	12,667.7	11,882.2	785.5	6.2	155,779.0	144,039.0	11,741.0	7.5

Historical Unemployment Rates





NEWS RELEASE

**FOR IMMEDIATE
RELEASE**

November 15, 2013

Kristina Leal, Chief of Staff
Corpus Christi Mayor's Office

(361) 826-3100

kristinal@cctexas.com

Jobs Today. Jobs Tomorrow. Are You Ready?

Nueces County Judge S. Loyd Neal, Jr. and
Corpus Christi Mayor Nelda Martinez
Host Jobs Town Hall Meeting

The South Texas region continues to be a leader in economic development and growth in Texas. There is an increasing demand for a skilled workforce. In an effort to spur residents to prepare for the job opportunities, Nueces County Judge S. Loyd Neal, Jr. and Corpus Christi Mayor Nelda Martinez will host a **FREE** public jobs town hall meeting on Thursday, December 5th in Nueces County.

When: Thursday, December 5, 2013 at 6:00PM
Where: Richard M. Borchard Regional Fairgrounds (Ballroom)
1213 Terry Shamsie Blvd. Robstown, TX 78380

Participating Employers

**Army Depot, Bay Ltd, Cheniere, Flint Hills, LyondellBasell,
M&G, TPCO America, Valero and voestalpine**

Representatives from **Army Depot, Bay Ltd, Cheniere, Flint Hills, LyondellBasell, M&G, TPCO America, Valero and voestalpine** will be represented on a workforce panel to discuss current and future job openings in the region as well as job requirements and qualifications.

The program will consist of resources for job seekers in South Texas including various training programs, education curriculum options, financial aid/scholarships, and GED resources. Industry experts have predicted the need for some 65,000 skilled workers in the South Texas region in the next five years. With this knowledge, Mayor Martinez established a Workforce Outreach Task Force to engage the region in addressing current workforce demands as well as growing demands in years to come.

A series of town hall meetings were held in 2013 throughout South Texas and will culminate with Nueces County. For more information please call Kristina Leal at (361)826-3101.

Jobs Today. Jobs Tomorrow. Are You Ready?

###