

# Coastal Bend Workforce Area

Area	Area Type	Latest Monthly Data October 2012						Previous Monthly Data September 2012				Year Ago October 2011			
		Labor Force	Employment	Unemployment	Rate	M+-	Y+-	Labor Force	Employment	Unemployment	Rate	Labor Force	Employment	Unemployment	Rate
United States	Nation	155,779,000	144,039,000	11,741,000	7.5	-0.1	-1.0	155,075,000	143,333,000	11,742,000	7.6	154,088,000	140,987,000	13,102,000	8.5
Texas	State	12,671,549	11,879,161	792,388	6.3	0.0	-1.3	12,641,619	11,840,055	801,564	6.3	12,514,986	11,565,060	949,926	7.6
Corpus Christi	MSA	220,182	207,405	12,777	5.8	-0.1	-1.5	221,450	208,472	12,978	5.9	218,908	202,868	16,040	7.3
Coastal Bend	WDA	298,181	281,385	16,796	5.6	-0.1	-1.6	298,575	281,563	17,012	5.7	292,906	271,878	21,028	7.2
Aransas	County	11,054	10,460	594	5.4	-0.3	-2.2	11,155	10,514	641	5.7	11,072	10,231	841	7.6
Bee	County	12,987	12,138	849	6.5	0.0	-1.6	12,913	12,077	836	6.5	12,556	11,535	1,021	8.1
Brooks	County	3,358	3,140	218	6.5	-0.2	-2.3	3,304	3,083	221	6.7	3,331	3,038	293	8.8
Duval	County	5,824	5,458	366	6.3	-0.1	-2.0	5,807	5,438	369	6.4	5,641	5,175	466	8.3
Jim Wells	County	25,580	24,423	1,157	4.5	-0.1	-1.8	25,303	24,142	1,161	4.6	23,479	22,008	1,471	6.3
Kenedy	County	260	253	7	2.7	-1.5	-3.0	263	252	11	4.2	261	246	15	5.7
Kleberg	County	17,864	16,915	949	5.3	0.0	-1.2	17,772	16,823	949	5.3	17,572	16,426	1,146	6.5
Live Oak	County	6,886	6,618	268	3.9	-0.3	-1.2	6,580	6,306	274	4.2	6,260	5,939	321	5.1
McMullen	County	728	712	16	2.2	0.0	-2.1	672	657	15	2.2	564	540	24	4.3
Nueces	County	179,406	169,260	10,146	5.7	0.0	-1.4	180,371	170,131	10,240	5.7	178,206	165,557	12,649	7.1
Refugio	County	4,513	4,323	190	4.2	-0.2	-1.1	4,510	4,313	197	4.4	4,335	4,104	231	5.3
San Patricio	County	29,721	27,685	2,036	6.9	-0.1	-1.7	29,925	27,827	2,098	7.0	29,629	27,079	2,550	8.6

(M+-) Change in unemployment rate from last month (Increase) (Decrease)

(Y+-) Change in unemployment rate from last year (Increase) (Decrease)

- Earnings for all occupations Coastal Bend, expressed as hourly rate (TWC):

Coastal Bend	All Occupations-	Average \$17.28/hr.	Entry level \$8.30/hr.	Experienced workers \$21.77/hr.	Top 10% \$31.60/hr.
Texas	All Occupations-	Average \$20.30/hr.	Entry level \$9.62/hr.	Experienced workers \$ 25.68/hr.	Top 10% \$37.83/hr.

- Educational Attainment for population 25 years of age and older - Corpus Christi (Census American Fact Finder/American Community Survey):

Less than 9 <sup>th</sup> grade	9.3%	12 <sup>th</sup> grade & GED	26.7%	Associates degree	7.4%	Graduate or Professional degrees	7.0%
9 <sup>th</sup> thru 11 <sup>th</sup> grade	11.8%	Some College	24.7%	Bachelors degree	13.0%		

- Median earnings Corpus Christi by education for persons 25 years of age & up (Census AFF/ACS): \$27,211 (\$36,380 male/ \$22,328 female)

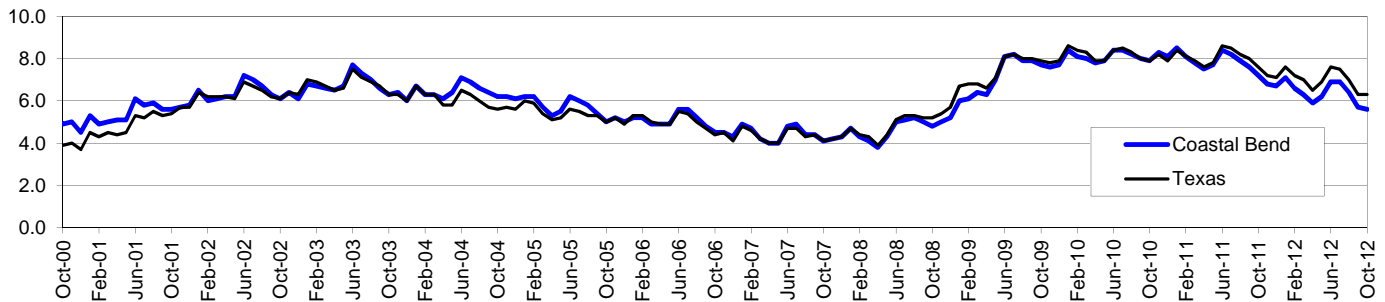
Less than High School	\$15,545	Some College or Associates	\$31,460	Graduate or Professional	\$54,717
High School & GED	\$23,028	Bachelor's	\$43,005		

# Coastal Bend Workforce Development Area\*

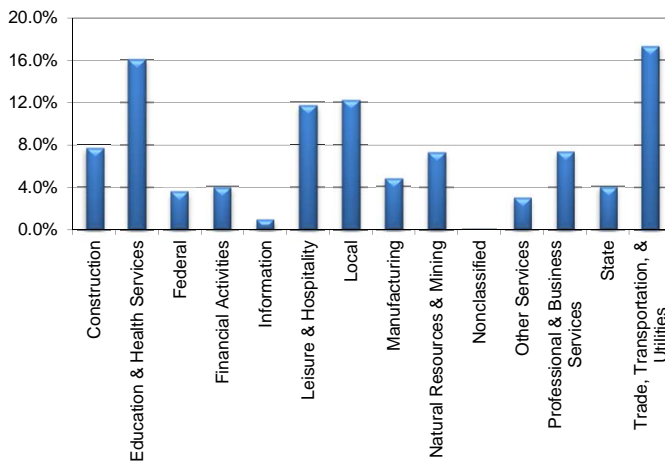
## October 2012

Coastal Bend WDA					Texas				
	CLF	Employed	Unemployed	Rate		CLF	Employed	Unemployed	Rate
<b>Oct-12</b>	298,181	281,385	16,796	5.6	<b>Oct-12</b>	12,671,549	11,879,161	792,388	6.3
<b>Sep-12</b>	298,575	281,563	17,012	5.7	<b>Sep-12</b>	12,641,619	11,840,055	801,564	6.3
<b>Oct-11</b>	292,906	271,878	21,028	7.2	<b>Oct-11</b>	12,514,986	11,565,060	949,926	7.6

### Historical Unemployment Rates



### Coastal Bend WDA Industry Composition 2nd Quarter 2012



### Total WDA Claims

#### Continued Claims for the Week of the 12th

	Oct-12	Sep-12	Oct-11	OTY
<b>Continued</b>	2,292	2,317	2,676	<b>-384</b>

#### Texas Unemployment Insurance Claims

#### Continued Claims for the Week of the 12th

	Oct-12	Sep-12	Oct-11	OTY
<b>Continued</b>	122,152	126,090	139,727	<b>-17,575</b>

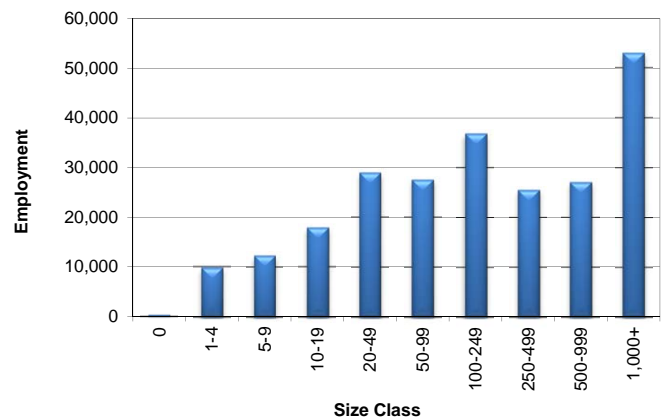
### Coastal Bend WDA Average Weekly Wage

	Coastal Bend	Texas
<b>2nd Quarter 2012</b>	\$792.17	\$922.44
<b>1st Quarter 2012</b>	\$811.48	\$1,012.59
<b>2nd Quarter 2011</b>	\$749.09	\$899.44
<b>Quarter Change</b>	-\$19.31	-\$90.15
<b>OTY Change</b>	\$43.08	\$23.00

### NAICS Covered Employment Quarterly Data 2nd Quarter 2012

SUPER SECTOR	Employment	Change	
		Quarter	Year
Construction	18,341	1,013	1,772
Education & Health Services	38,454	523	-1,321
Federal	8,613	39	41
Financial Activities	9,455	169	251
Information	2,304	8	2
Leisure & Hospitality	27,972	1,915	1,652
Local	29,177	219	-919
Manufacturing	11,401	205	788
Natural Resources & Mining	17,500	1,008	3,559
Nonclassified	25	10	12
Other Services	7,163	257	697
Professional & Business Services	17,642	323	511
State	9,470	-244	-750
Trade, Transportation, & Utilities	41,444	429	2,206
<b>TOTAL</b>	<b>238,961</b>	<b>5,874</b>	<b>8,501</b>

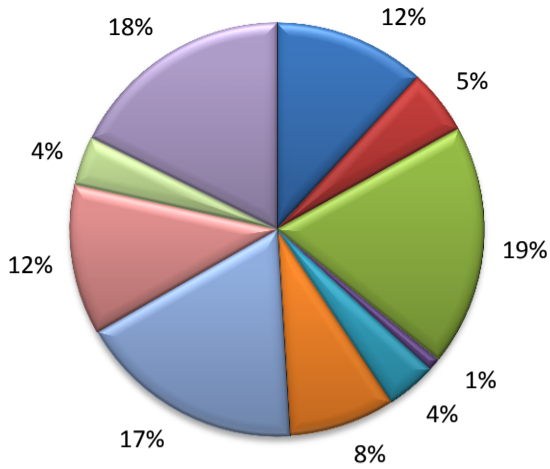
### Size Class Employment Composition 2nd Quarter 2012



\*Counties in WDA: Aransas, Bee, Brooks, Duval, Jim Wells, Kenedy, Kleberg, Live Oak, McMullen, Nueces, Refugio, & San Patricio

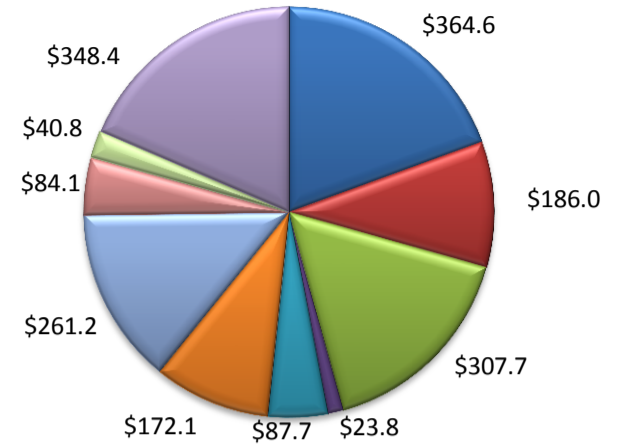
(Aransas, Nueces, San Patricio)

Industry Composition



- Mining, Logging, and Construction
- Manufacturing
- Trade, Transportation, and Utilities
- Information
- Financial Activities
- Professional and Business Services
- Education and Health Services
- Leisure and Hospitality
- Other Services
- Government

Wages by Industry (in millions)  
1st Quarter 2012



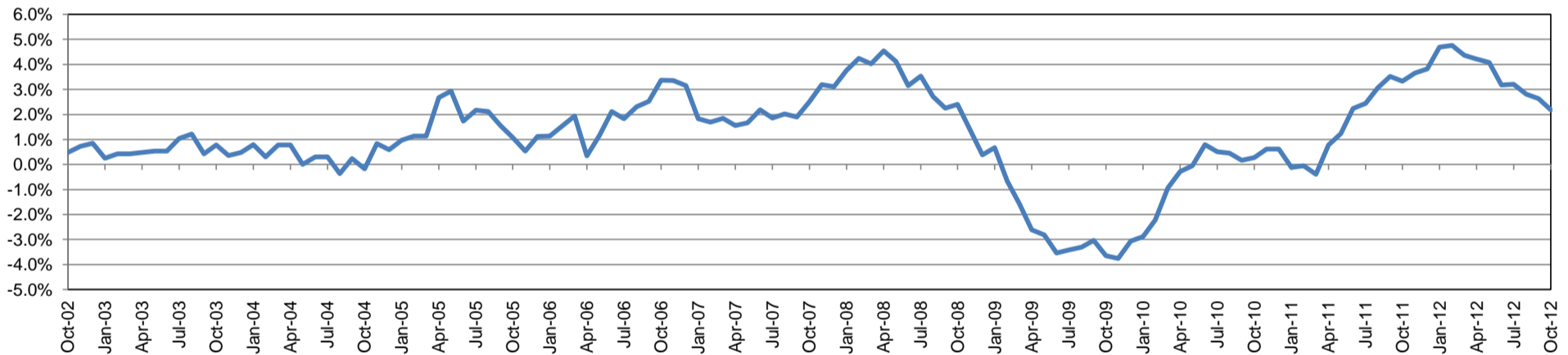
Employment by Industry

	Oct-12	Sep-12	Oct-11	Monthly Change		Annual Change	
				Actual	%	Actual	%
Total Nonfarm	187,200	187,300	183,200	-100	-0.1%	4,000	2.2%
Mining, Logging, and Construction	22,200	22,000	21,100	200	0.9%	1,100	5.2%
Manufacturing	9,500	9,600	9,500	-100	-1.0%	0	0.0%
Trade, Transportation, and Utilities	35,300	35,600	33,800	-300	-0.8%	1,500	4.4%
Information	1,900	1,900	2,000	0	0.0%	-100	-5.0%
Financial Activities	7,400	7,400	7,400	0	0.0%	0	0.0%
Professional and Business Services	15,500	15,500	15,300	0	0.0%	200	1.3%
Education and Health Services	33,100	32,900	32,100	200	0.6%	1,000	3.1%
Leisure and Hospitality	22,000	22,200	21,100	-200	-0.9%	900	4.3%
Other Services	7,200	7,200	7,000	0	0.0%	200	2.9%
Government	33,100	33,000	33,900	100	0.3%	-800	-2.4%

Industry Size Class

Size Class	Employees per firm	Number of Firms	March 2012		
			Employment in Size Class	% Total Employment	
9	1000+	16	40,535	22.6%	
8	500-999	27	19,001	10.6%	
7	250-499	45	14,662	8.2%	
6	100-249	186	28,687	16.0%	
5	50-99	311	22,130	12.4%	
4	20-49	740	22,682	12.7%	
3	10-19	1,030	14,010	7.8%	
2	5-9	1,483	9,872	5.5%	
1	1-4	3,622	7,584	4.2%	
0	0	563	0	0.0%	
Total			8,023	179,163	100.0%

Annual Growth Rate for Total Nonagricultural Employment



Unemployment Information (all estimates in thousands)

	Corpus Christi MSA				Texas (Actual)				United States (Actual)			
	C.L.F.	Emp.	Unemp.	Rate	C.L.F.	Emp.	Unemp.	Rate	C.L.F.	Emp.	Unemp.	Rate
Oct-12	220.2	207.4	12.8	5.8	12,671.6	11,879.2	792.4	6.3	155,779.0	144,039.0	11,741.0	7.5
Sep-12	221.5	208.5	13.0	5.9	12,641.7	11,840.1	801.6	6.3	155,075.0	143,333.0	11,742.0	7.6
Oct-11	218.9	202.9	16.0	7.3	12,515.0	11,565.1	949.9	7.6	154,088.0	140,987.0	13,102.0	8.5

Historical Unemployment Rates

