

Coastal Bend Workforce Area

Area	Area Type	Latest Monthly Data October 2011						Previous Monthly Data September 2011				Year Ago October 2010			
		Labor Force	Employment	Unemployment	Rate	M+-	Y+-	Labor Force	Employment	Unemployment	Rate	Labor Force	Employment	Unemployment	Rate
United States	Nation	154,088,000	140,987,000	13,102,000	8.5	-0.3	-0.5	154,022,000	140,502,000	13,520,000	8.8	153,562,000	139,749,000	13,903,000	9
Texas	State	12,367,034	11,378,100	988,934	8.0	-0.4	0.1	12,371,457	11,330,299	1,041,158	8.4	12,172,019	11,205,109	966,910	7.9
Corpus Christi	MSA	219,325	202,752	16,573	7.6	-0.4	-0.3	219,037	201,457	17,580	8.0	212,383	195,710	16,673	7.9
Coastal Bend	WDA	290,451	268,611	21,840	7.5	-0.5	-0.4	290,454	267,287	23,167	8.0	281,981	259,835	22,146	7.9
Aransas	County	12,225	11,307	918	7.5	-0.4	0.1	12,201	11,235	966	7.9	11,787	10,915	872	7.4
Bee	County	12,569	11,468	1,101	8.8	-0.6	0	12,693	11,506	1,187	9.4	12,411	11,315	1,096	8.8
Brooks	County	3,233	2,921	312	9.7	-0.1	-0.3	3,257	2,937	320	9.8	3,221	2,899	322	10.0
Duval	County	5,451	4,959	492	9.0	-0.5	-1.7	5,460	4,944	516	9.5	5,276	4,712	564	10.7
Jim Wells	County	21,900	20,336	1,564	7.1	-0.4	-0.8	21,863	20,220	1,643	7.5	21,092	19,419	1,673	7.9
Kenedy	County	241	226	15	6.2	-1.9	3.2	246	226	20	8.1	233	226	7	3.0
Kleberg	County	17,444	16,266	1,178	6.8	-0.2	0	17,487	16,256	1,231	7.0	17,426	16,246	1,180	6.8
Live Oak	County	5,559	5,226	333	6.0	-0.5	-0.3	5,624	5,260	364	6.5	5,307	4,974	333	6.3
McMullen	County	475	447	28	5.9	-0.2	-0.6	461	433	28	6.1	385	360	25	6.5
Nueces	County	174,957	162,056	12,901	7.4	-0.4	-0.2	174,727	161,021	13,706	7.8	169,217	156,427	12,790	7.6
Refugio	County	4,254	4,010	244	5.7	-0.7	-0.7	4,326	4,048	278	6.4	4,247	3,974	273	6.4
San Patricio	County	32,143	29,389	2,754	8.6	-0.5	-1	32,109	29,201	2,908	9.1	31,379	28,368	3,011	9.6

(M+-) Change in unemployment rate from last month (Increase) (Decrease)

(Y+-) Change in unemployment rate from last year (Increase) (Decrease)

- Earnings for all occupations Coastal Bend, expressed as hourly rate (TWC):

Coastal Bend	All Occupations-	Average \$17.28/hr.	Entry level \$8.30/hr.	Experienced workers \$21.77/hr.	Top 10% \$31.60/hr.
Texas	All Occupations-	Average \$20.30/hr.	Entry level \$9.62/hr.	Experienced workers \$ 25.68/hr.	Top 10% \$37.83/hr.

- Educational Attainment for population 25 years of age and older - Corpus Christi (Census American Fact Finder/American Community Survey):

Less than 9 th grade	9.3%	12 th grade & GED	26.7%	Associates degree	7.4%	Graduate or Professional degrees	7.0%
9 th thru 11 th grade	11.8%	Some College	24.7%	Bachelors degree	13.0%		

- Median earnings Corpus Christi by education for persons 25 years of age & up (Census AFF/ACS): \$27,211 (\$36,380 male/ \$22,328 female)

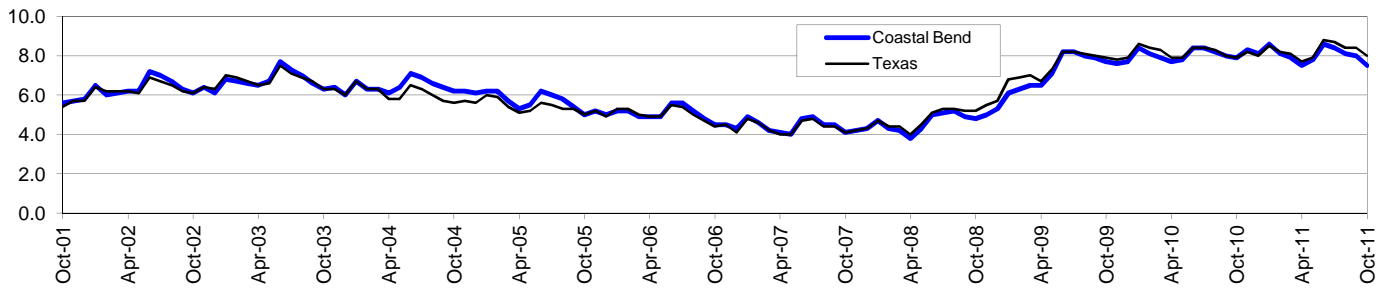
Less than High School	\$15,545	Some College or Associates	\$31,460	Graduate or Professional	\$54,717
High School & GED	\$23,028	Bachelor's	\$43,005		

Coastal Bend Workforce Development Area*

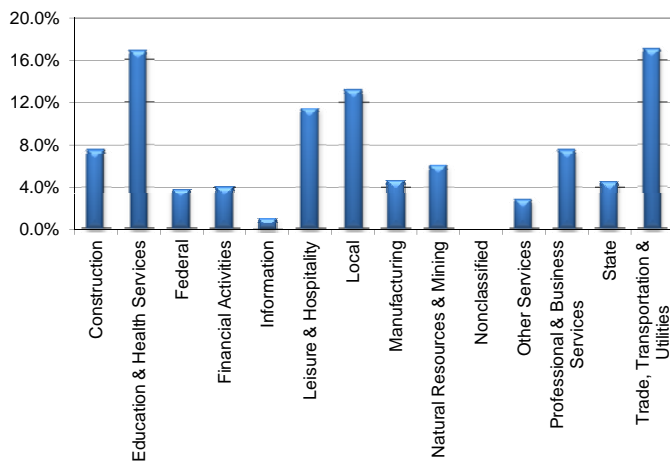
October 2011

Coastal Bend WDA					Texas				
	CLF	Employed	Unemployed	Rate		CLF	Employed	Unemployed	Rate
Oct-11	290,451	268,611	21,840	7.5	Oct-11	12,367,034	11,378,100	988,934	8.0
Sep-11	290,454	267,287	23,167	8.0	Sep-11	12,371,457	11,330,299	1,041,158	8.4
Oct-10	281,981	259,835	22,146	7.9	Oct-10	12,172,019	11,205,109	966,910	7.9

Historical Unemployment Rates



Coastal Bend WDA Industry Composition 2nd Quarter 2011



Total WDA Claims

	Oct-11	Sep-11	Oct-10	OTY
Initial	1,700	1,582	2,101	-401
Continued	5,931	5,863	7,819	-1,888
Continued Claims for the Week of the 12th				
Continued	2,648	2,702	3,529	-881

Texas Unemployment Insurance Claims Filed

	Oct-11	Sep-11	Oct-10	OTY
Initial	85,204	78,034	87,633	-2,429
Continued	807,989	747,606	880,638	-72,649
Continued Claims for the Week of the 12th				
Continued	174,199	183,571	195,886	-21,687

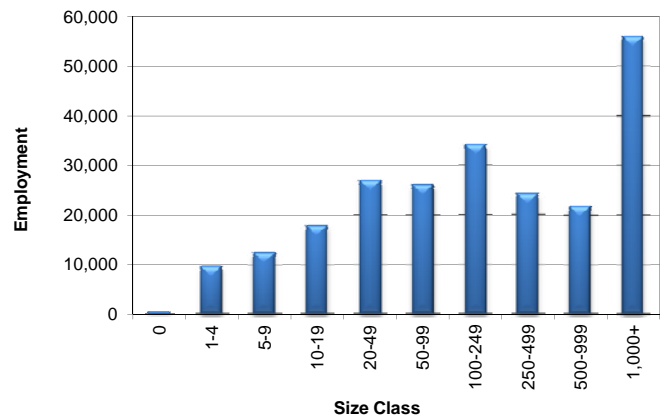
Coastal Bend WDA Average Weekly Wage

	Coastal Bend	WDA Qtr. Chg.	Texas
2nd Quarter 2011	\$751.33	\$17.55	\$899.79
1st Quarter 2011	\$733.78	WDA OTY Chg.	\$944.37
2nd Quarter 2010	\$711.05	\$40.28	\$863.86

NAICS Covered Employment Quarterly Data 2nd Quarter 2011

SUPER SECTOR	Employment	Change	
		Quarter	Year
Construction	17,029	870	540
Education & Health Services	38,487	669	931
Federal	8,568	49	-576
Financial Activities	9,190	203	121
Information	2,301	28	-177
Leisure & Hospitality	26,326	1,925	217
Local	30,232	-319	-617
Manufacturing	10,607	217	421
Natural Resources & Mining	13,927	874	2,883
Nonclassified	32	-8	7
Other Services	6,454	197	73
Professional & Business Services	17,077	99	277
State	10,219	-523	-87
Trade, Transportation & Utilities	39,216	1,113	466
TOTAL	229,665	5,394	4,479

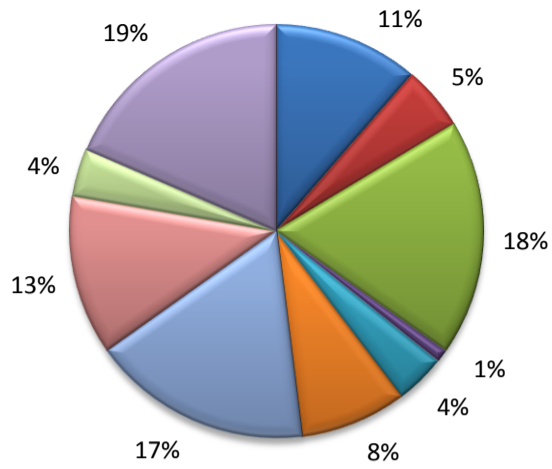
Size Class Employment Composition 2nd Quarter 2011



*Counties in WDA: Aransas, Bee, Brooks, Duval, Jim Wells, Kenedy, Kleberg, Live Oak, McMullen, Nueces, Refugio, & San Patricio

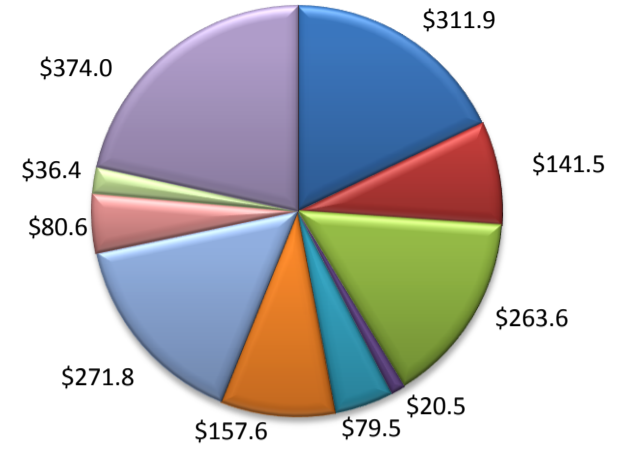
(Aransas, Nueces, San Patricio)

Industry Composition



- Mining, Logging, and Construction
- Manufacturing
- Trade, Transportation, and Utilities
- Information
- Financial Activities
- Professional and Business Services
- Education and Health Services
- Leisure and Hospitality
- Other Services
- Government

Wages by Industry (in millions)
2nd Quarter 2011



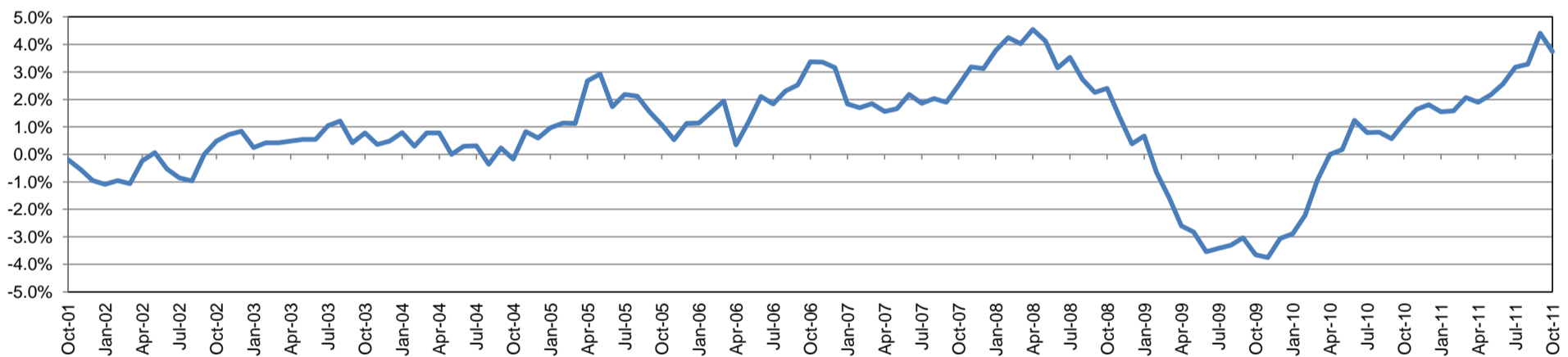
Employment by Industry

	Oct-11	Sep-11	Oct-10	Monthly Change		Annual Change	
				Actual	%	Actual	%
Total Nonfarm	185,500	184,800	178,800	700	0.4%	6,700	3.8%
Mining, Logging, and Construction	21,000	21,000	19,800	0	0.0%	1,200	6.1%
Manufacturing	9,400	9,400	9,200	0	0.0%	200	2.2%
Trade, Transportation, and Utilities	34,100	34,100	31,200	0	0.0%	2,900	9.3%
Information	1,800	1,900	2,100	-100	-5.3%	-300	-14.3%
Financial Activities	7,300	7,400	7,200	-100	-1.4%	100	1.4%
Professional and Business Services	15,500	15,400	15,200	100	0.7%	300	2.0%
Education and Health Services	31,900	31,800	31,000	100	0.3%	900	2.9%
Leisure and Hospitality	23,100	23,100	20,600	0	0.0%	2,500	12.1%
Other Services	7,000	6,900	6,800	100	1.5%	200	2.9%
Government	34,400	33,800	35,700	600	1.8%	-1,300	-3.6%

Industry Size Class

Size Class	Employees per firm	Number of Firms	June 2011		
			Employment in Size Class	% Total Employment	
9	1000+	18	42,697	24.0%	
8	500-999	26	18,176	10.2%	
7	250-499	43	14,223	8.0%	
6	100-249	181	27,633	15.5%	
5	50-99	314	21,909	12.3%	
4	20-49	711	21,696	12.2%	
3	10-19	1,065	14,458	8.1%	
2	5-9	1,477	9,832	5.5%	
1	1-4	3,589	7,536	4.2%	
0	0	588	0	0.0%	
Total			8,012	178,160	100.0%

Annual Growth Rate for Total Nonagricultural Employment



Unemployment Information (all estimates in thousands)

	Corpus Christi MSA				Texas (Actual)				United States (Actual)			
	C.L.F.	Emp.	Unemp.	Rate	C.L.F.	Emp.	Unemp.	Rate	C.L.F.	Emp.	Unemp.	Rate
Oct-11	219.4	202.8	16.6	7.6	12,367.0	11,378.1	988.9	8.0	154,088.0	140,987.0	13,102.0	8.5
Sep-11	219.1	201.5	17.6	8.0	12,371.5	11,330.3	1,041.2	8.4	154,022.0	140,502.0	13,520.0	8.8
Oct-10	212.4	195.7	16.7	7.9	12,172.0	11,205.1	966.9	7.9	153,652.0	139,749.0	13,903.0	9.0

Historical Unemployment Rates

