

Coastal Bend Workforce Area

(Not Seasonally Adjusted Unemployment Rates by WDA, MSA, & County)

Area	Area Type	Latest Monthly Data November 2014						Previous Monthly Data October 2014				Year Ago November 2013			
		Labor Force	Employment	Unemployment	Rate	M+-	Y+-	Labor Force	Employment	Unemployment	Rate	Labor Force	Employment	Unemployment	Rate
United States	Nation	156,397,000	147,287,000	9,110,000	5.8	0.0	-1.2	156,278,000	147,283,000	8,995,000	5.8	155,284,000	144,443,000	10,841,000	7.0
Texas	State	13,059,467	12,416,210	643,257	4.9	-0.2	-1.2	13,039,214	12,369,996	669,218	5.1	12,856,855	12,078,994	777,861	6.1
Corpus Christi	MSA	222,366	211,839	10,527	4.7	-0.2	-1.0	221,826	211,041	10,785	4.9	219,011	206,616	12,395	5.7
Coastal Bend	WDA	301,795	287,988	13,807	4.6	-0.1	-0.9	300,929	286,748	14,181	4.7	298,114	281,838	16,276	5.5
Aransas	County	11,302	10,763	539	4.8	-0.1	-1.1	11,276	10,722	554	4.9	11,154	10,498	656	5.9
Bee	County	13,236	12,545	691	5.2	-0.2	-0.8	13,223	12,510	713	5.4	13,713	12,895	818	6.0
Brooks	County	3,387	3,198	189	5.6	0.0	-0.7	3,409	3,217	192	5.6	3,418	3,204	214	6.3
Duval	County	6,077	5,776	301	5.0	-0.2	-0.4	6,095	5,779	316	5.2	6,039	5,711	328	5.4
Jim Wells	County	24,629	23,677	952	3.9	-0.1	-0.8	24,642	23,645	997	4.0	24,960	23,790	1,170	4.7
Kenedy	County	281	275	6	2.1	0.0	-1.5	280	274	6	2.1	276	266	10	3.6
Kleberg	County	18,437	17,687	750	4.1	-0.1	-0.9	18,377	17,605	772	4.2	18,030	17,135	895	5.0
Live Oak	County	7,556	7,339	217	2.9	-0.1	-0.7	7,301	7,079	222	3.0	7,230	6,968	262	3.6
McMullen	County	1,041	1,020	21	2.0	0.1	-0.4	1,030	1,010	20	1.9	797	777	20	2.5
Nueces	County	181,030	173,041	7,989	4.4	-0.1	-1.0	180,597	172,389	8,208	4.5	178,421	168,774	9,647	5.4
Refugio	County	4,785	4,632	153	3.2	-0.1	-0.3	4,746	4,588	158	3.3	4,639	4,476	163	3.5
San Patricio	County	30,034	28,035	1,999	6.7	-0.1	-0.4	29,953	27,930	2,023	6.8	29,437	27,344	2,093	7.1

(M+-) Change in unemployment rate from last month (Increase) (Decrease)

(Y+-) Change in unemployment rate from last year (Increase) (Decrease)

- Earnings for all occupations Coastal Bend, expressed as hourly rate (TWC):

Coastal Bend	All Occupations-	Average \$18.35/hr.	Entry level \$8.58/hr.	Experienced workers \$23.24/hr.	Top 10% \$33.56/hr.
Texas	All Occupations-	Average \$20.97/hr.	Entry level \$8.88/hr.	Experienced workers \$ 27.02/hr.	Top 10% \$39.64/hr.

- Educational Attainment for population 25 years of age and older - Corpus Christi (Census American Fact Finder/American Community Survey):

Less than 9 th grade	8.7%	12 th grade & GED	27.7%	Associates degree	7.0%	Graduate or Professional degrees	8.4%
9 th thru 11 th grade	9.3%	Some College	25.1%	Bachelors degree	13.8%		

- Median earnings Corpus Christi by education for persons 25 years of age & up (Census AFF/ACS): \$27,211 (\$36,380 male/ \$22,328 female)

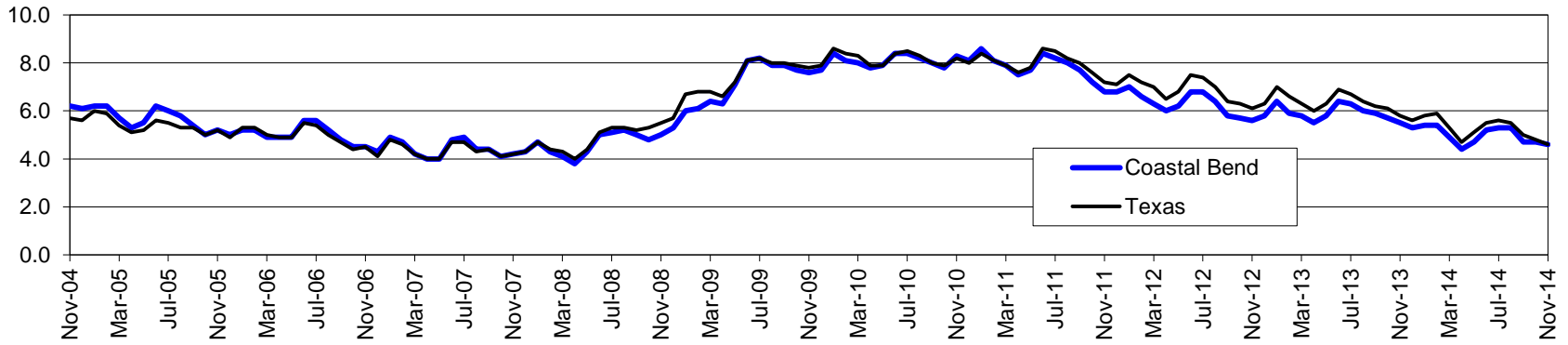
Less than High School	\$15,437	Some College or Associates	\$28,739	Graduate or Professional	\$56,681
High School & GED	\$26,818	Bachelor's	\$44,078		

Coastal Bend Workforce Development Area*

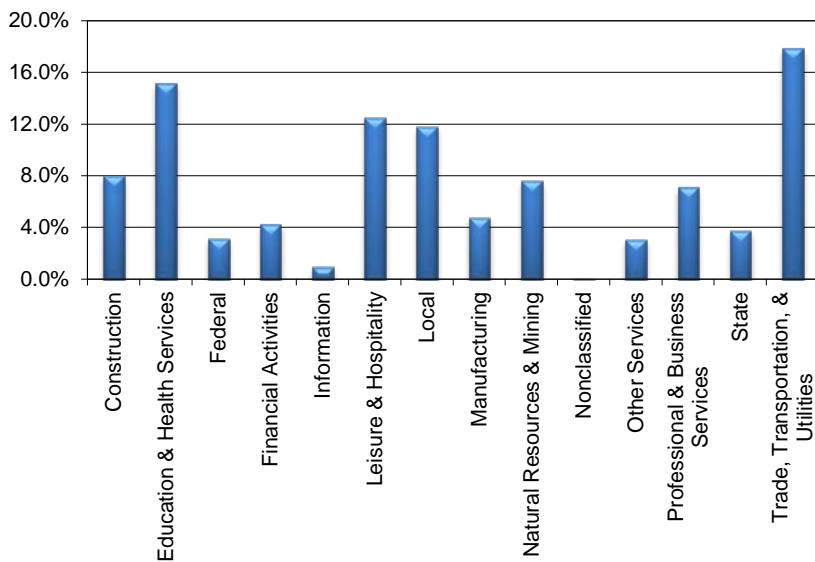
November 2014

Coastal Bend WDA					Texas				
	CLF	Employed	Unemployed	Rate		CLF	Employed	Unemployed	Rate
Nov-14	301,795	287,988	13,807	4.6	Nov-14	13,069,205	12,464,366	604,839	4.6
Oct-14	300,929	286,748	14,181	4.7	Oct-14	13,067,713	12,442,329	625,384	4.8
Nov-13	298,114	281,838	16,276	5.5	Nov-13	12,882,215	12,130,708	751,507	5.8

Historical Unemployment Rates



Coastal Bend WDA Industry Composition 2nd Quarter 2014



Total WDA Claims

Continued Claims for the Week of the 12th

	Nov-14	Oct-14	Nov-13	OTY
Continued	2,665	2,565	2,676	-11

Texas Unemployment Insurance Claims

Continued Claims for the Week of the 12th

	Nov-14	Oct-14	Nov-13	OTY
Continued	100,749	99,256	121,885	-21,136

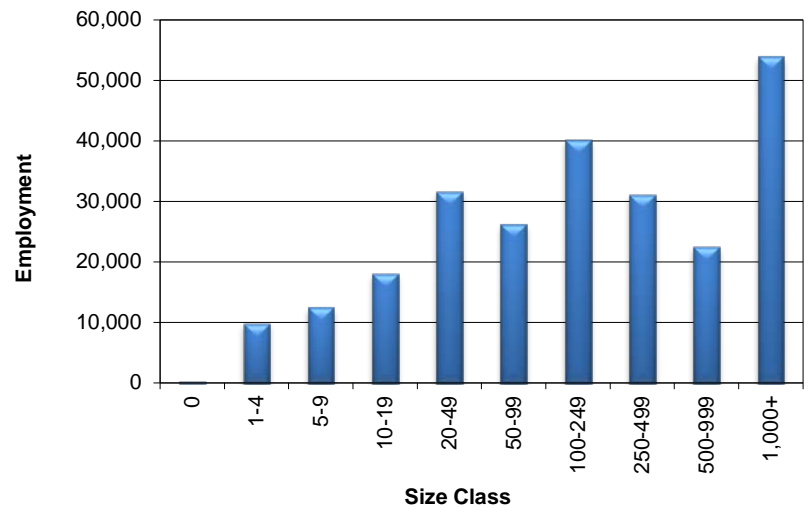
Coastal Bend WDA Average Weekly Wage

	Coastal Bend	Texas
2nd Quarter 2014	\$829.32	\$973.65
1st Quarter 2014	\$855.01	\$1,062.26
2nd Quarter 2013	\$801.84	\$944.12
Quarter Change	-\$25.69	-\$88.61
OTY Change	\$27.48	\$29.53

NAICS Covered Employment Quarterly Data 2nd Quarter 2014

SUPER SECTOR	Employment	Change	
		Quarter	Year
Construction	19,806	40	1,612
Education & Health Services	37,326	253	-1,100
Federal	7,784	16	-340
Financial Activities	10,417	307	425
Information	2,401	50	17
Leisure & Hospitality	30,874	1,855	1,053
Local	29,290	-77	144
Manufacturing	11,763	209	313
Natural Resources & Mining	18,815	265	76
Nonclassified	29	6	-16
Other Services	7,565	233	283
Professional & Business Services	17,536	191	-158
State	9,280	-123	-50
Trade, Transportation, & Utilities	44,119	402	1,398
TOTAL	247,005	3,627	3,657

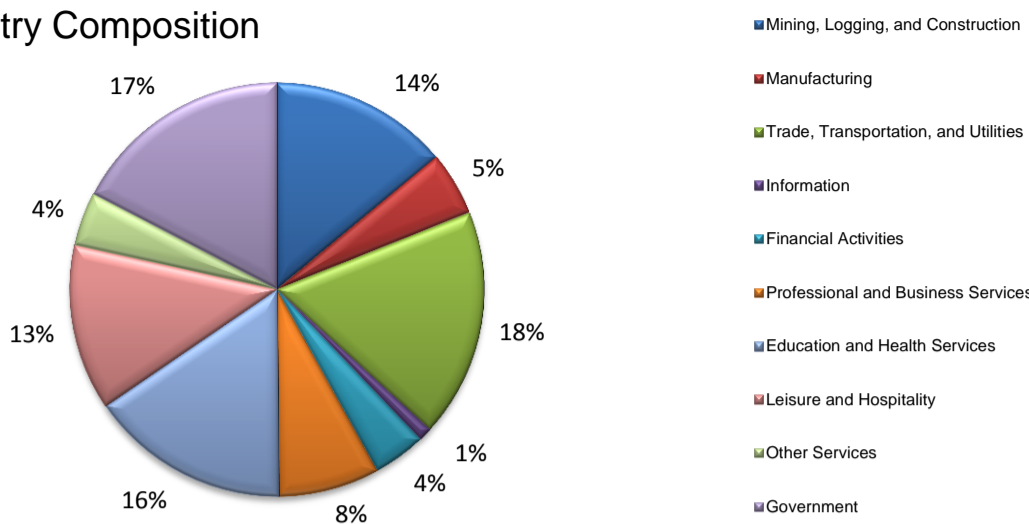
Size Class Employment Composition 2nd Quarter 2014



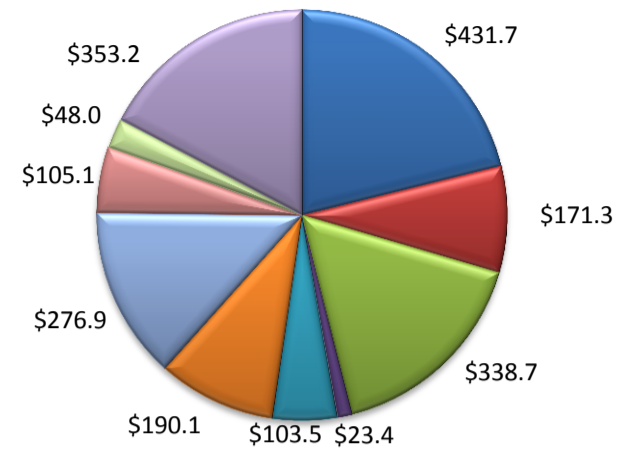
*Counties in WDA: Aransas, Bee, Brooks, Duval, Jim Wells, Kenedy, Kleberg, Live Oak, McMullen, Nueces, Refugio, & San Patricio

(Aransas, Nueces, San Patricio)

Industry Composition



Wages by Industry (in millions)
2nd Quarter 2014



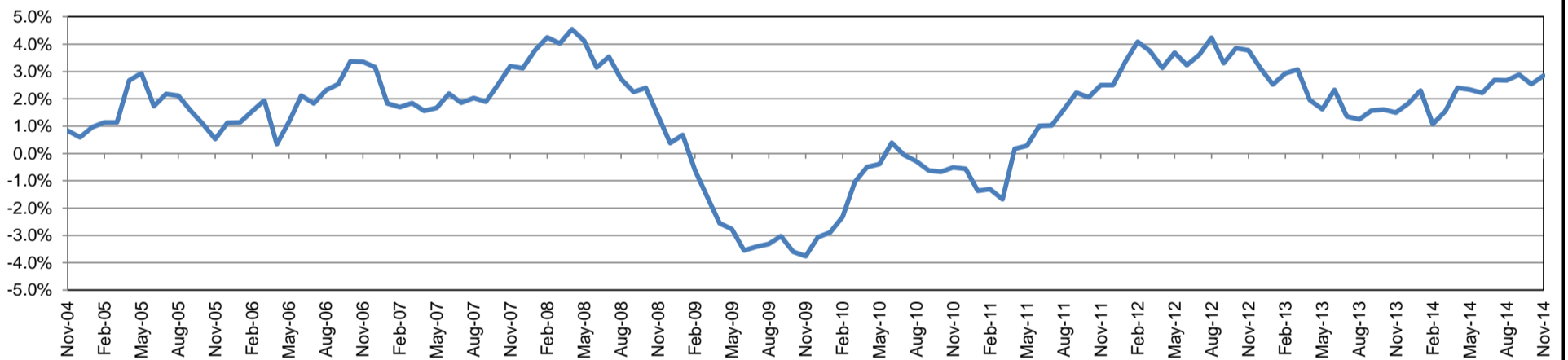
Employment by Industry

	Nov-14	Oct-14	Nov-13	Monthly Change		Annual Change	
				Actual	%	Actual	%
Total Nonfarm	195,300	194,000	189,900	1,300	0.7%	5,400	2.8%
Mining, Logging, and Construction	27,300	26,400	24,400	900	3.4%	2,900	11.9%
Manufacturing	9,700	9,900	9,800	-200	-2.0%	-100	-1.0%
Trade, Transportation, and Utilities	34,900	34,400	34,500	500	1.5%	400	1.2%
Information	2,100	2,000	2,100	100	5.0%	0	0.0%
Financial Activities	8,000	8,000	7,900	0	0.0%	100	1.3%
Professional and Business Services	15,400	15,500	15,700	-100	-0.7%	-300	-1.9%
Education and Health Services	30,500	30,500	29,700	0	0.0%	800	2.7%
Leisure and Hospitality	25,300	25,500	23,900	-200	-0.8%	1,400	5.9%
Other Services	8,200	8,200	7,800	0	0.0%	400	5.1%
Government	33,900	33,600	34,100	300	0.9%	-200	-0.6%

Industry Size Class

Size Class	Employees per firm	Number of Firms	June 2014		
			Employment in Size Class	% Total Employment	
9	1000+	18	41,641	22.0%	
8	500-999	24	16,019	8.5%	
7	250-499	59	19,792	10.5%	
6	100-249	221	33,187	17.5%	
5	50-99	315	21,781	11.5%	
4	20-49	827	25,019	13.2%	
3	10-19	1,065	14,469	7.6%	
2	5-9	1,490	9,861	5.2%	
1	1-4	3,637	7,564	4.0%	
0	0	524	0	0.0%	
Total			8,180	189,333	100.0%

Annual Growth Rate for Total Nonagricultural Employment



Unemployment Information (all estimates in thousands)

	Corpus Christi MSA				Texas (Actual)				United States (Actual)			
	C.L.F.	Emp.	Unemp.	Rate	C.L.F.	Emp.	Unemp.	Rate	C.L.F.	Emp.	Unemp.	Rate
Nov-14	222.3	211.8	10.5	4.7	13,069.2	12,464.4	604.8	4.6	156,297.0	147,666.0	8,630.0	5.5
Oct-14	221.8	211.0	10.8	4.9	13,067.7	12,442.3	625.4	4.8	156,616.0	147,936.0	8,680.0	5.5
Nov-13	219.0	206.6	12.4	5.7	12,882.2	12,130.7	751.5	5.8	155,046.0	144,775.0	10,271.0	6.6

Historical Unemployment Rates

