

Coastal Bend Workforce Area

| Area | Area Type | Latest Monthly Data November 2012 | | | | | | Previous Monthly Data October 2012 | | | | Year Ago November 2011 | | | |
|----------------|-----------|--------------------------------------|-------------|--------------|------|------|------|---------------------------------------|-------------|--------------|------|---------------------------|-------------|--------------|------|
| | | Labor Force | Employment | Unemployment | Rate | M+- | Y+- | Labor Force | Employment | Unemployment | Rate | Labor Force | Employment | Unemployment | Rate |
| United States | Nation | 154,953,000 | 143,549,000 | 11,404,000 | 7.4 | -0.1 | -0.8 | 155,779,000 | 144,039,000 | 11,741,000 | 7.5 | 153,683,000 | 141,070,000 | 12,613,000 | 8.2 |
| Texas | State | 12,628,770 | 11,891,259 | 737,511 | 5.8 | -0.4 | -1.4 | 12,671,606 | 11,879,708 | 791,898 | 6.2 | 12,503,742 | 11,600,625 | 903,117 | 7.2 |
| Corpus Christi | MSA | 219,090 | 207,184 | 11,906 | 5.4 | -0.4 | -1.6 | 220,331 | 207,574 | 12,757 | 5.8 | 219,178 | 203,849 | 15,329 | 7.0 |
| Coastal Bend | WDA | 296,960 | 281,246 | 15,714 | 5.3 | -0.3 | -1.5 | 298,419 | 281,642 | 16,777 | 5.6 | 293,450 | 273,413 | 20,037 | 6.8 |
| Aransas | County | 11,020 | 10,449 | 571 | 5.2 | -0.2 | -2.2 | 11,068 | 10,469 | 599 | 5.4 | 11,104 | 10,281 | 823 | 7.4 |
| Bee | County | 12,847 | 12,029 | 818 | 6.4 | -0.1 | -1.3 | 13,003 | 12,153 | 850 | 6.5 | 12,506 | 11,539 | 967 | 7.7 |
| Brooks | County | 3,352 | 3,152 | 200 | 6.0 | -0.5 | -2.2 | 3,362 | 3,144 | 218 | 6.5 | 3,335 | 3,063 | 272 | 8.2 |
| Duval | County | 5,857 | 5,512 | 345 | 5.9 | -0.4 | -2.1 | 5,830 | 5,465 | 365 | 6.3 | 5,669 | 5,216 | 453 | 8.0 |
| Jim Wells | County | 25,637 | 24,545 | 1,092 | 4.3 | -0.2 | -1.5 | 25,609 | 24,451 | 1,158 | 4.5 | 23,662 | 22,294 | 1,368 | 5.8 |
| Kenedy | County | 261 | 254 | 7 | 2.7 | 0.0 | -2.7 | 260 | 253 | 7 | 2.7 | 261 | 247 | 14 | 5.4 |
| Kleberg | County | 17,884 | 16,987 | 897 | 5.0 | -0.3 | -1.2 | 17,882 | 16,935 | 947 | 5.3 | 17,591 | 16,509 | 1,082 | 6.2 |
| Live Oak | County | 6,862 | 6,608 | 254 | 3.7 | -0.2 | -1.1 | 6,894 | 6,626 | 268 | 3.9 | 6,305 | 6,003 | 302 | 4.8 |
| McMullen | County | 717 | 701 | 16 | 2.2 | 0.0 | -1.2 | 729 | 713 | 16 | 2.2 | 565 | 546 | 19 | 3.4 |
| Nueces | County | 178,497 | 169,080 | 9,417 | 5.3 | -0.3 | -1.4 | 179,522 | 169,398 | 10,124 | 5.6 | 178,329 | 166,358 | 11,971 | 6.7 |
| Refugio | County | 4,452 | 4,274 | 178 | 4.0 | -0.2 | -1.3 | 4,518 | 4,328 | 190 | 4.2 | 4,378 | 4,147 | 231 | 5.3 |
| San Patricio | County | 29,574 | 27,655 | 1,919 | 6.5 | -0.3 | -2.0 | 29,742 | 27,707 | 2,035 | 6.8 | 29,745 | 27,210 | 2,535 | 8.5 |

(M+-) Change in unemployment rate from last month (Increase) (Decrease)

(Y+-) Change in unemployment rate from last year (Increase) (Decrease)

- Earnings for all occupations Coastal Bend, expressed as hourly rate (TWC):

| | | | | | |
|--------------|------------------|---------------------|------------------------|----------------------------------|---------------------|
| Coastal Bend | All Occupations- | Average \$17.28/hr. | Entry level \$8.30/hr. | Experienced workers \$21.77/hr. | Top 10% \$31.60/hr. |
| Texas | All Occupations- | Average \$20.30/hr. | Entry level \$9.62/hr. | Experienced workers \$ 25.68/hr. | Top 10% \$37.83/hr. |

- Educational Attainment for population 25 years of age and older - Corpus Christi (Census American Fact Finder/American Community Survey):

| | | | | | | | |
|---|-------|------------------------------|-------|-------------------|-------|----------------------------------|------|
| Less than 9 th grade | 9.3% | 12 th grade & GED | 26.7% | Associates degree | 7.4% | Graduate or Professional degrees | 7.0% |
| 9 th thru 11 th grade | 11.8% | Some College | 24.7% | Bachelors degree | 13.0% | | |

- Median earnings Corpus Christi by education for persons 25 years of age & up (Census AFF/ACS): \$27,211 (\$36,380 male/ \$22,328 female)

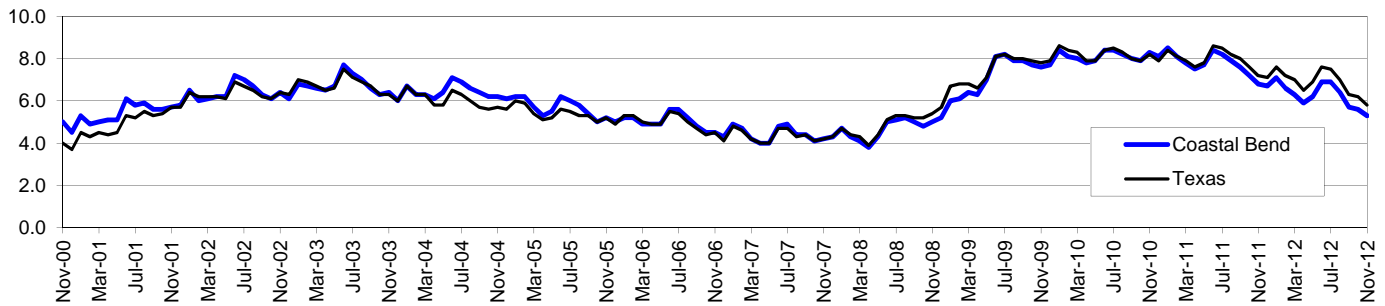
| | | | | | |
|-----------------------|----------|----------------------------|----------|--------------------------|----------|
| Less than High School | \$15,545 | Some College or Associates | \$31,460 | Graduate or Professional | \$54,717 |
| High School & GED | \$23,028 | Bachelor's | \$43,005 | | |

Coastal Bend Workforce Development Area*

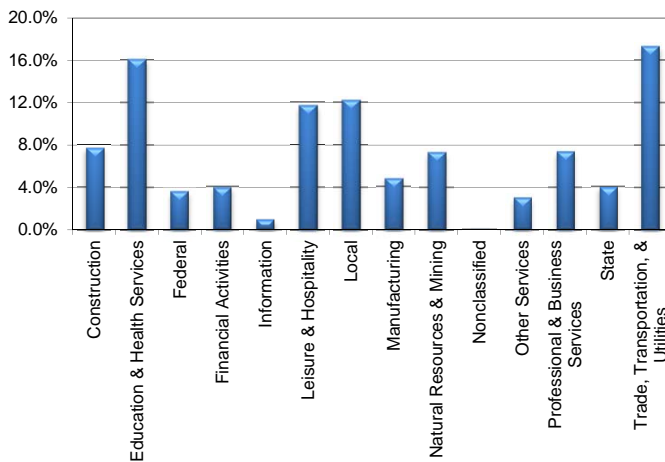
November 2012

| Coastal Bend WDA | | | | | Texas | | | | |
|------------------|---------|----------|------------|------|--------|------------|------------|------------|------|
| | CLF | Employed | Unemployed | Rate | | CLF | Employed | Unemployed | Rate |
| Nov-12 | 296,960 | 281,246 | 15,714 | 5.3 | Nov-12 | 12,628,770 | 11,891,259 | 737,511 | 5.8 |
| Oct-12 | 298,419 | 281,642 | 16,777 | 5.6 | Oct-12 | 12,671,606 | 11,879,708 | 791,898 | 6.2 |
| Nov-11 | 293,450 | 273,413 | 20,037 | 6.8 | Nov-11 | 12,503,742 | 11,600,625 | 903,117 | 7.2 |

Historical Unemployment Rates



Coastal Bend WDA Industry Composition 2nd Quarter 2012



Total WDA Claims

Continued Claims for the Week of the 12th

| | Nov-12 | Oct-12 | Nov-11 | OTY |
|-----------|--------|--------|--------|------|
| Continued | 2,413 | 2,307 | 2,782 | -369 |

Texas Unemployment Insurance Claims

Continued Claims for the Week of the 12th

| | Nov-12 | Oct-12 | Nov-11 | OTY |
|-----------|---------|---------|---------|---------|
| Continued | 123,315 | 123,246 | 140,449 | -17,134 |

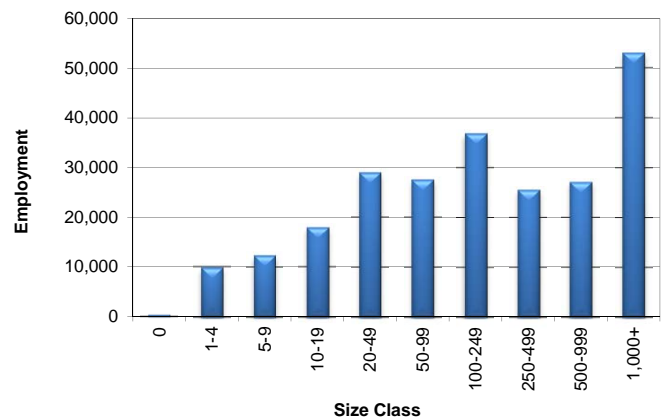
Coastal Bend WDA Average Weekly Wage

| | Coastal Bend | Texas |
|------------------|--------------|------------|
| 2nd Quarter 2012 | \$792.17 | \$922.44 |
| 1st Quarter 2012 | \$811.48 | \$1,012.59 |
| 2nd Quarter 2011 | \$749.09 | \$899.44 |
| Quarter Change | -\$19.31 | -\$90.15 |
| OTY Change | \$43.08 | \$23.00 |

NAICS Covered Employment Quarterly Data 2nd Quarter 2012

| SUPER SECTOR | Employment | Change | |
|------------------------------------|----------------|--------------|--------------|
| | | Quarter | Year |
| Construction | 18,341 | 1,013 | 1,772 |
| Education & Health Services | 38,454 | 523 | -1,321 |
| Federal | 8,613 | 39 | 41 |
| Financial Activities | 9,455 | 169 | 251 |
| Information | 2,304 | 8 | 2 |
| Leisure & Hospitality | 27,972 | 1,915 | 1,652 |
| Local | 29,177 | 219 | -919 |
| Manufacturing | 11,401 | 205 | 788 |
| Natural Resources & Mining | 17,500 | 1,008 | 3,559 |
| Nonclassified | 25 | 10 | 12 |
| Other Services | 7,163 | 257 | 697 |
| Professional & Business Services | 17,642 | 323 | 511 |
| State | 9,470 | -244 | -750 |
| Trade, Transportation, & Utilities | 41,444 | 429 | 2,206 |
| TOTAL | 238,961 | 5,874 | 8,501 |

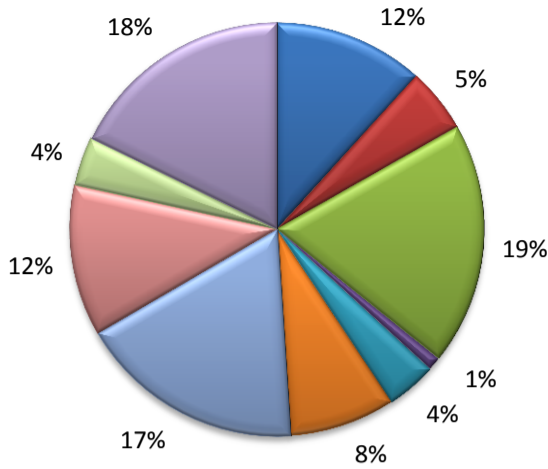
Size Class Employment Composition 2nd Quarter 2012



*Counties in WDA: Aransas, Bee, Brooks, Duval, Jim Wells, Kenedy, Kleberg, Live Oak, McMullen, Nueces, Refugio, & San Patricio

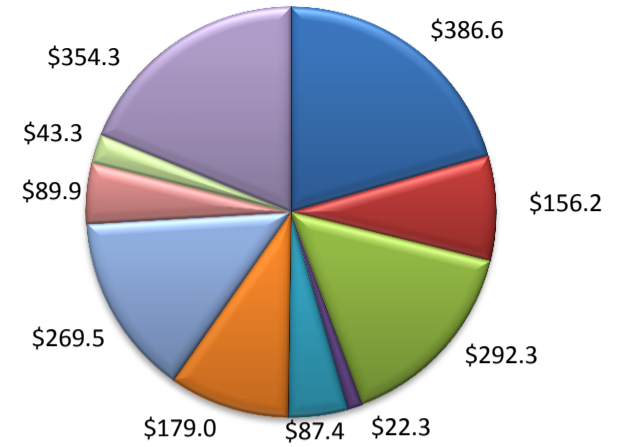
(Aransas, Nueces, San Patricio)

Industry Composition



- Mining, Logging, and Construction
- Manufacturing
- Trade, Transportation, and Utilities
- Information
- Financial Activities
- Professional and Business Services
- Education and Health Services
- Leisure and Hospitality
- Other Services
- Government

Wages by Industry (in millions)
2nd Quarter 2012



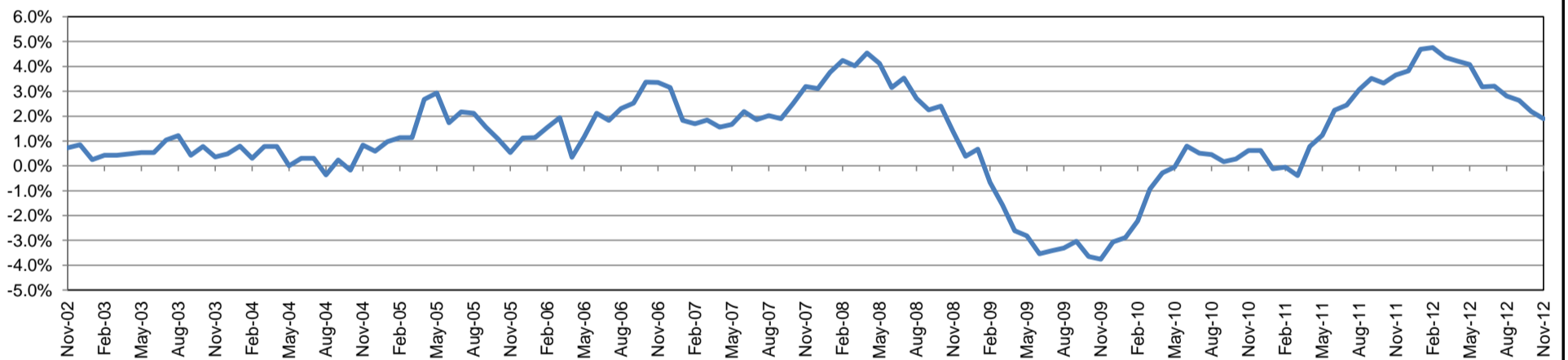
Employment by Industry

| | Nov-12 | Oct-12 | Nov-11 | Monthly Change | | Annual Change | |
|--------------------------------------|---------|---------|---------|----------------|-------|---------------|-------|
| | | | | Actual | % | Actual | % |
| Total Nonfarm | 187,900 | 187,200 | 184,400 | 700 | 0.4% | 3,500 | 1.9% |
| Mining, Logging, and Construction | 22,000 | 22,200 | 21,100 | -200 | -0.9% | 900 | 4.3% |
| Manufacturing | 9,500 | 9,500 | 9,600 | 0 | 0.0% | -100 | -1.0% |
| Trade, Transportation, and Utilities | 35,700 | 35,300 | 34,900 | 400 | 1.1% | 800 | 2.3% |
| Information | 1,900 | 1,900 | 1,900 | 0 | 0.0% | 0 | 0.0% |
| Financial Activities | 7,400 | 7,400 | 7,400 | 0 | 0.0% | 0 | 0.0% |
| Professional and Business Services | 15,500 | 15,500 | 15,200 | 0 | 0.0% | 300 | 2.0% |
| Education and Health Services | 33,200 | 33,100 | 32,100 | 100 | 0.3% | 1,100 | 3.4% |
| Leisure and Hospitality | 22,100 | 21,900 | 21,100 | 200 | 0.9% | 1,000 | 4.7% |
| Other Services | 7,200 | 7,200 | 7,100 | 0 | 0.0% | 100 | 1.4% |
| Government | 33,400 | 33,200 | 34,000 | 200 | 0.6% | -600 | -1.8% |

Industry Size Class June 2012

| Size Class | Employees per firm | Number of Firms | Employment in Size Class | % Total Employment |
|------------|--------------------|-----------------|--------------------------|--------------------|
| 9 | 1000+ | 15 | 38,463 | 21.1% |
| 8 | 500-999 | 30 | 21,303 | 11.7% |
| 7 | 250-499 | 47 | 15,121 | 8.3% |
| 6 | 100-249 | 197 | 30,000 | 16.5% |
| 5 | 50-99 | 317 | 22,492 | 12.3% |
| 4 | 20-49 | 757 | 23,130 | 12.7% |
| 3 | 10-19 | 1,048 | 14,325 | 7.9% |
| 2 | 5-9 | 1,484 | 9,791 | 5.4% |
| 1 | 1-4 | 3,615 | 7,552 | 4.1% |
| 0 | 0 | 493 | 0 | 0.0% |
| Total | | 8,003 | 182,177 | 100.0% |

Annual Growth Rate for Total Nonagricultural Employment



Unemployment Information (all estimates in thousands)

| | Corpus Christi MSA | | | | Texas (Actual) | | | | United States (Actual) | | | |
|--------|--------------------|-------|--------|------|----------------|----------|--------|------|------------------------|-----------|----------|------|
| | C.L.F. | Emp. | Unemp. | Rate | C.L.F. | Emp. | Unemp. | Rate | C.L.F. | Emp. | Unemp. | Rate |
| Nov-12 | 219.1 | 207.2 | 11.9 | 5.4 | 12,628.8 | 11,891.3 | 737.5 | 5.8 | 154,953.0 | 143,549.0 | 11,404.0 | 7.4 |
| Oct-12 | 220.4 | 207.6 | 12.8 | 5.8 | 12,671.6 | 11,879.7 | 791.9 | 6.2 | 155,779.0 | 144,039.0 | 11,741.0 | 7.5 |
| Nov-11 | 219.1 | 203.8 | 15.3 | 7.0 | 12,503.7 | 11,600.6 | 903.1 | 7.2 | 153,683.0 | 141,070.0 | 12,613.0 | 8.2 |

Historical Unemployment Rates

