

Coastal Bend Workforce Area

(Not Seasonally Adjusted Unemployment Rates by WDA, MSA, & County)

Area	Area Type	Latest Monthly Data						Previous Monthly Data				Year Ago			
		May 2013						April 2013				May 2012			
		Labor Force	Employment	Unemployment	Rate	M+-	Y+-	Labor Force	Employment	Unemployment	Rate	Labor Force	Employment	Unemployment	Rate
United States	Nation	155,734,000	144,432,000	11,302,000	7.3	0.2	-0.6	154,739,000	143,724,000	11,014,000	7.1	154,998,000	142,727,000	12,271,000	7.9
Texas	State	12,794,742	11,963,825	830,917	6.5	0.4	-0.3	12,735,605	11,955,472	780,133	6.1	12,594,147	11,735,304	858,843	6.8
Corpus Christi	MSA	221,714	208,276	13,438	6.1	0.4	-0.3	221,486	208,797	12,689	5.7	218,408	204,486	13,922	6.4
Coastal Bend	WDA	302,335	284,451	17,884	5.9	0.3	-0.3	300,909	284,190	16,719	5.6	296,307	278,039	18,268	6.2
Aransas	County	11,178	10,521	657	5.9	0.2	0.3	11,184	10,548	636	5.7	10,945	10,330	615	5.6
Bee	County	13,236	12,291	945	7.1	0.6	0.0	13,110	12,252	858	6.5	13,067	12,145	922	7.1
Brooks	County	3,492	3,224	268	7.7	1.0	0.9	3,417	3,189	228	6.7	3,422	3,188	234	6.8
Duval	County	6,190	5,812	378	6.1	0.2	-0.6	6,081	5,725	356	5.9	5,940	5,544	396	6.7
Jim Wells	County	26,301	25,037	1,264	4.8	0.3	-0.1	25,894	24,741	1,153	4.5	25,270	24,021	1,249	4.9
Kenedy	County	276	268	8	2.9	0.3	0.0	273	266	7	2.6	274	266	8	2.9
Kleberg	County	18,188	17,130	1,058	5.8	0.5	0.1	18,008	17,059	949	5.3	18,063	17,033	1,030	5.7
Live Oak	County	7,553	7,254	299	4.0	0.3	-0.3	7,324	7,056	268	3.7	6,688	6,403	285	4.3
McMullen	County	721	698	23	3.2	0.3	0.4	721	700	21	2.9	632	614	18	2.8
Nueces	County	180,760	170,197	10,563	5.8	0.3	-0.5	180,566	170,623	9,943	5.5	178,253	167,100	11,153	6.3
Refugio	County	4,665	4,462	203	4.4	0.3	-0.1	4,595	4,405	190	4.1	4,543	4,339	204	4.5
San Patricio	County	29,775	27,557	2,218	7.4	0.3	0.0	29,736	27,626	2,110	7.1	29,210	27,056	2,154	7.4

(M+-) Change in unemployment rate from last month (Increase) (Decrease)

(Y+-) Change in unemployment rate from last year (Increase) (Decrease)

- Earnings for all occupations Coastal Bend, expressed as hourly rate (TWC):

Coastal Bend	All Occupations-	Average \$17.28/hr.	Entry level \$8.30/hr.	Experienced workers \$21.77/hr.	Top 10% \$31.60/hr.
Texas	All Occupations-	Average \$20.30/hr.	Entry level \$9.62/hr.	Experienced workers \$ 25.68/hr.	Top 10% \$37.83/hr.

- Educational Attainment for population 25 years of age and older - Corpus Christi (Census American Fact Finder/American Community Survey):

Less than 9 th grade	9.3%	12 th grade & GED	26.7%	Associates degree	7.4%	Graduate or Professional degrees	7.0%
9 th thru 11 th grade	11.8%	Some College	24.7%	Bachelors degree	13.0%		

- Median earnings Corpus Christi by education for persons 25 years of age & up (Census AFF/ACS): \$27,211 (\$36,380 male/ \$22,328 female)

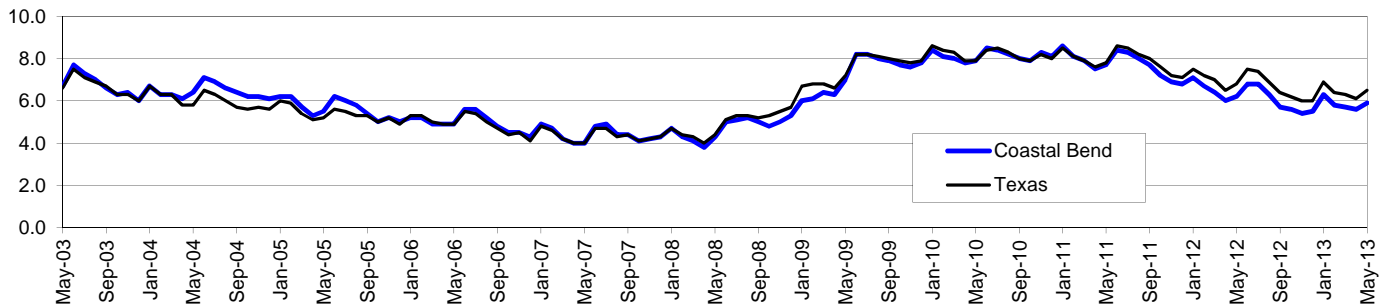
Less than High School	\$15,545	Some College or Associates	\$31,460	Graduate or Professional	\$54,717
High School & GED	\$23,028	Bachelor's	\$43,005		

Coastal Bend Workforce Development Area*

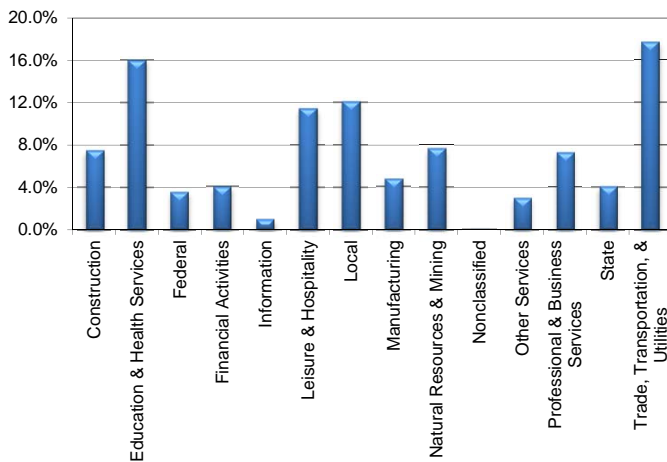
May 2013

Coastal Bend WDA					Texas				
	CLF	Employed	Unemployed	Rate		CLF	Employed	Unemployed	Rate
May-13	302,335	284,451	17,884	5.9	May-13	12,794,742	11,963,825	830,917	6.5
Apr-13	300,909	284,190	16,719	5.6	Apr-13	12,735,605	11,955,472	780,133	6.1
May-12	296,307	278,039	18,268	6.2	May-12	12,594,147	11,735,304	858,843	6.8

Historical Unemployment Rates



Coastal Bend WDA Industry Composition 4th Quarter 2012



Total WDA Claims

Continued Claims for the Week of the 12th

	May-13	Apr-13	May-12	OTY
Continued	2,667	2,683	2,246	421

Texas Unemployment Insurance Claims

Continued Claims for the Week of the 12th

	May-13	Apr-13	May-12	OTY
Continued	126,288	125,580	126,341	-53

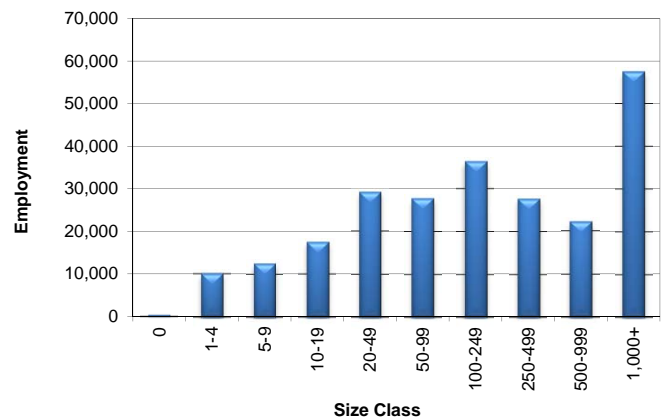
Coastal Bend WDA Average Weekly Wage

	Coastal Bend	Texas
4th Quarter 2012	\$864.51	\$1,026.84
3rd Quarter 2012	\$795.31	\$929.04
4th Quarter 2011	\$820.49	\$972.66
Quarter Change	\$69.20	\$97.80
OTY Change	\$44.02	\$54.18

NAICS Covered Employment Quarterly Data 4th Quarter 2012

SUPER SECTOR	Employment	Change	
		Quarter	Year
Construction	18,030	328	-214
Education & Health Services	38,586	121	-1,394
Federal	8,558	-63	-52
Financial Activities	9,638	24	226
Information	2,330	14	57
Leisure & Hospitality	27,603	-1,031	1,994
Local	29,196	2,037	166
Manufacturing	11,428	-28	204
Natural Resources & Mining	18,437	318	2,614
Nonclassified	62	8	37
Other Services	7,191	-247	793
Professional & Business Services	17,470	114	590
State	9,892	1,113	-134
Trade, Transportation, & Utilities	42,633	653	1,492
TOTAL	241,054	3,361	6,379

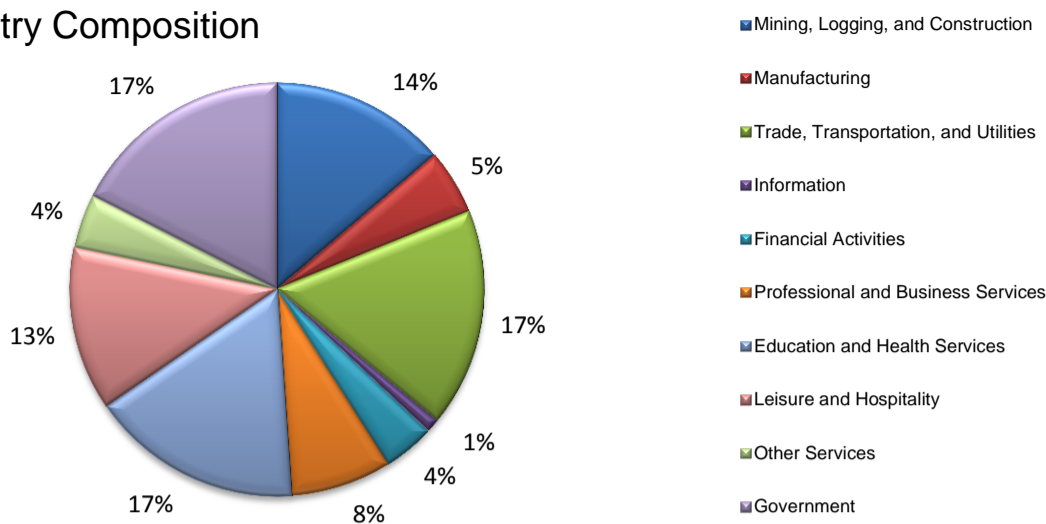
Size Class Employment Composition 4th Quarter 2012



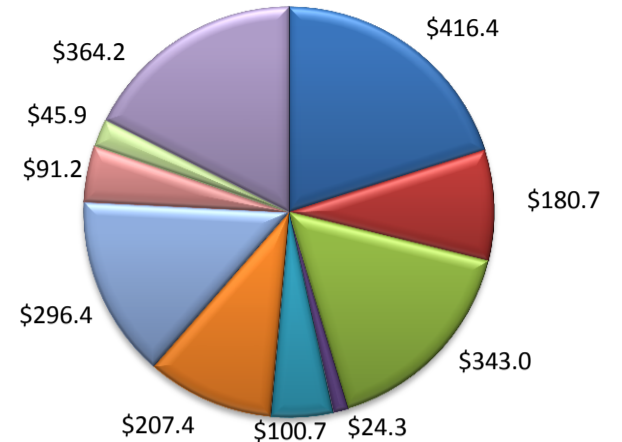
*Counties in WDA: Aransas, Bee, Brooks, Duval, Jim Wells, Kenedy, Kleberg, Live Oak, McMullen, Nueces, Refugio, & San Patricio

(Aransas, Nueces, San Patricio)

Industry Composition



Wages by Industry (in millions)
4th Quarter 2012



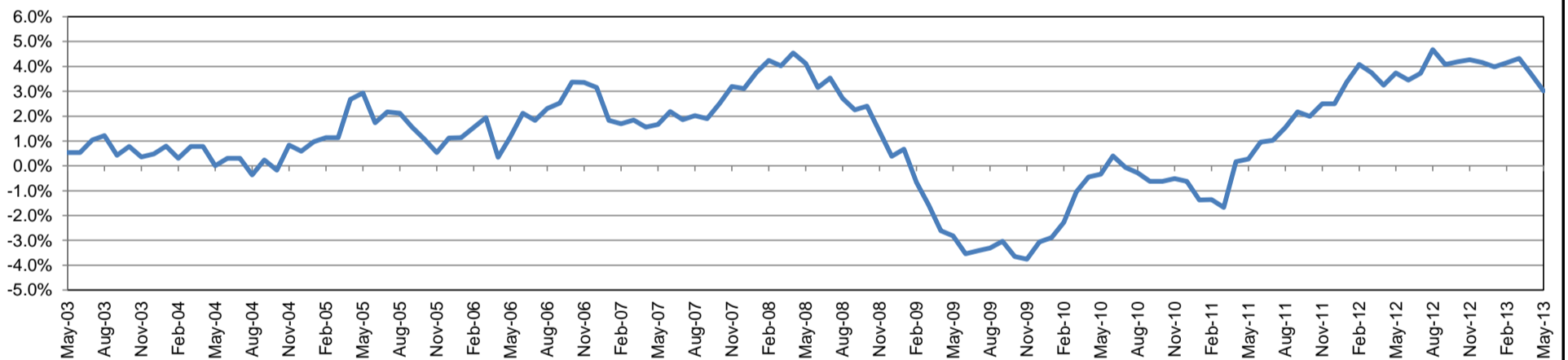
Employment by Industry

	May-13	Apr-13	May-12	Monthly Change		Annual Change	
				Actual	%	Actual	%
Total Nonfarm	191,400	191,400	185,800	0	0.0%	5,600	3.0%
Mining, Logging, and Construction	26,300	26,100	23,600	200	0.8%	2,700	11.4%
Manufacturing	9,800	9,800	9,900	0	0.0%	-100	-1.0%
Trade, Transportation, and Utilities	32,700	32,800	32,000	-100	-0.3%	700	2.2%
Information	2,000	1,900	2,100	100	5.3%	-100	-4.8%
Financial Activities	7,700	7,700	7,500	0	0.0%	200	2.7%
Professional and Business Services	15,100	15,300	15,300	-200	-1.3%	-200	-1.3%
Education and Health Services	31,600	31,800	31,000	-200	-0.6%	600	1.9%
Leisure and Hospitality	24,600	24,400	23,000	200	0.8%	1,600	7.0%
Other Services	8,100	8,100	7,500	0	0.0%	600	8.0%
Government	33,500	33,500	33,900	0	0.0%	-400	-1.2%

Industry Size Class

Size Class	Employees per firm	Number of Firms	December 2012		
			Employment in Size Class	% Total Employment	
9	1000+	19	42,732	23.4%	
8	500-999	24	16,590	9.1%	
7	250-499	51	16,634	9.1%	
6	100-249	191	29,031	15.9%	
5	50-99	331	23,227	12.7%	
4	20-49	764	22,958	12.6%	
3	10-19	1,032	13,834	7.6%	
2	5-9	1,485	9,833	5.4%	
1	1-4	3,719	7,728	4.2%	
0	0	435	0	0.0%	
Total			8,051	182,567	100.0%

Annual Growth Rate for Total Nonagricultural Employment



Unemployment Information (all estimates in thousands)

	Corpus Christi MSA				Texas (Actual)				United States (Actual)			
	C.L.F.	Emp.	Unemp.	Rate	C.L.F.	Emp.	Unemp.	Rate	C.L.F.	Emp.	Unemp.	Rate
May-13	221.7	208.3	13.4	6.1	12,794.7	11,963.8	830.9	6.5	155,734.0	144,432.0	11,302.0	7.3
Apr-13	221.5	208.8	12.7	5.7	12,735.6	11,955.5	780.1	6.1	154,739.0	143,724.0	11,014.0	7.1
May-12	218.4	204.5	13.9	6.4	12,594.1	11,735.3	858.8	6.8	154,998.0	142,727.0	12,271.0	7.9

Historical Unemployment Rates

