

Coastal Bend Workforce Area

Area	Area Type	Latest Monthly Data May 2012						Previous Monthly Data April 2012				Year Ago May 2011			
		Labor Force	Employment	Unemployment	Rate	M+-	Y+-	Labor Force	Employment	Unemployment	Rate	Labor Force	Employment	Unemployment	Rate
United States	Nation	154,998,000	142,727,000	12,271,000	7.9	0.2	-0.8	153,905,000	141,995,000	11,910,000	7.7	153,449,000	140,028,000	13,421,000	8.7
Texas	State	12,606,775	11,739,561	867,214	6.9	0.4	-0.9	12,548,131	11,734,094	814,037	6.5	12,424,587	11,454,011	970,576	7.8
Coastal Bend	WDA	299,117	280,533	18,584	6.2	0.3	-1.5	297,362	279,785	17,577	5.9	290,844	268,522	22,322	7.7
Corpus Christi	MSA	222,747	208,590	14,157	6.4	0.3	-1.5	221,718	208,291	13,427	6.1	217,031	199,969	17,062	7.9
Aransas	County	11,145	10,520	625	5.6	0.1	-2.4	11,116	10,505	611	5.5	10,964	10,085	879	8.0
Bee	County	12,748	11,806	942	7.4	0.6	-1.3	12,669	11,804	865	6.8	12,511	11,424	1,087	8.7
Brooks	County	3,380	3,139	241	7.1	0.3	-1.4	3,370	3,141	229	6.8	3,360	3,075	285	8.5
Duval	County	5,704	5,295	409	7.2	0.2	-1.6	5,640	5,246	394	7.0	5,590	5,097	493	8.8
Jim Wells	County	24,491	23,221	1,270	5.2	0.3	-1.4	24,115	22,923	1,192	4.9	23,405	21,858	1,547	6.6
Kenedy	County	264	256	8	3.0	0.3	-0.5	263	256	7	2.7	257	248	9	3.5
Kleberg	County	18,172	17,139	1,033	5.7	0.3	-1.1	18,057	17,087	970	5.4	17,804	16,591	1,213	6.8
Live Oak	County	6,522	6,228	294	4.5	0.2	-1.4	6,422	6,148	274	4.3	5,984	5,632	352	5.9
McMullen	County	656	638	18	2.7	0.3	-0.9	663	647	16	2.4	558	538	20	3.6
Nueces	County	181,556	170,227	11,329	6.2	0.3	-1.4	180,726	169,983	10,743	5.9	176,680	163,192	13,488	7.6
Refugio	County	4,433	4,221	212	4.8	0.2	-1.0	4,445	4,242	203	4.6	4,344	4,090	254	5.8
San Patricio	County	30,046	27,843	2,203	7.3	0.4	-1.9	29,876	27,803	2,073	6.9	29,387	26,692	2,695	9.2

(M+-) Change in unemployment rate from last month (Increase) (Decrease)

(Y+-) Change in unemployment rate from last year (Increase) (Decrease)

- Earnings for all occupations Coastal Bend, expressed as hourly rate (TWC):

Coastal Bend	All Occupations-	Average \$17.28/hr.	Entry level \$8.30/hr.	Experienced workers \$21.77/hr.	Top 10% \$31.60/hr.
Texas	All Occupations-	Average \$20.30/hr.	Entry level \$9.62/hr.	Experienced workers \$ 25.68/hr.	Top 10% \$37.83/hr.

- Educational Attainment for population 25 years of age and older - Corpus Christi (Census American Fact Finder/American Community Survey):

Less than 9 th grade	9.3%	12 th grade & GED	26.7%	Associates degree	7.4%	Graduate or Professional degrees	7.0%
9 th thru 11 th grade	11.8%	Some College	24.7%	Bachelors degree	13.0%		

- Median earnings Corpus Christi by education for persons 25 years of age & up (Census AFF/ACS): **\$27,211** (\$36,380 male/ \$22,328 female)

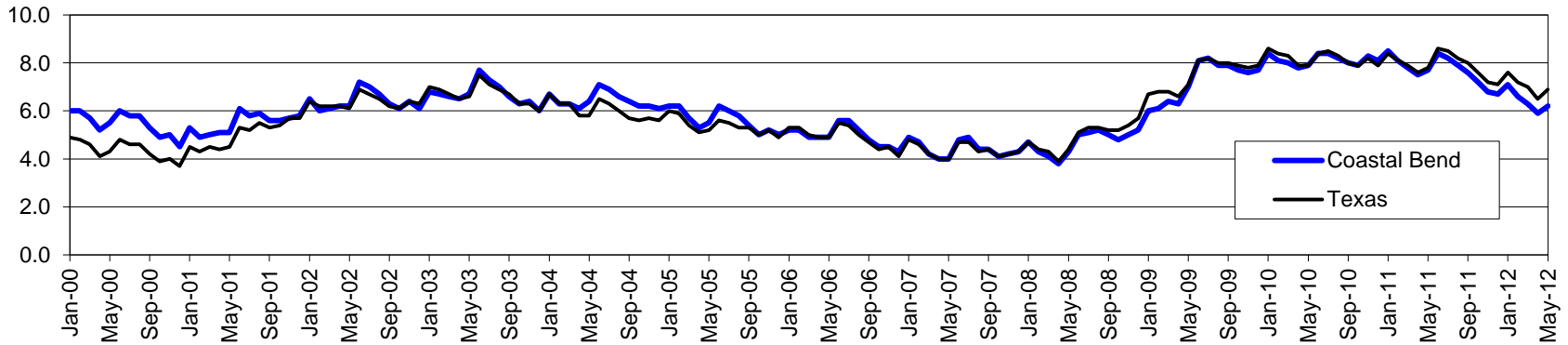
Less than High School	\$15,545	Some College or Associates	\$31,460	Graduate or Professional	\$54,717
High School & GED	\$23,028	Bachelor's	\$43,005		

Coastal Bend Workforce Development Area*

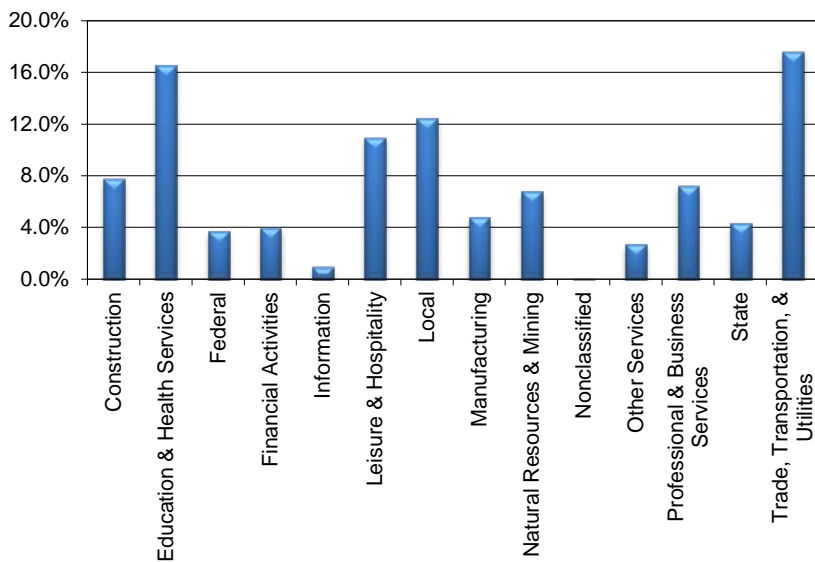
May 2012

Coastal Bend WDA					Texas				
	CLF	Employed	Unemployed	Rate		CLF	Employed	Unemployed	Rate
May-12	299,117	280,533	18,584	6.2	May-12	12,606,775	11,739,561	867,214	6.9
Apr-12	297,362	279,785	17,577	5.9	Apr-12	12,548,131	11,734,094	814,037	6.5
May-11	290,844	268,522	22,322	7.7	May-11	12,424,587	11,454,011	970,576	7.8

Historical Unemployment Rates



Coastal Bend WDA Industry Composition 4th Quarter 2011



Total WDA Claims

Continued Claims for the Week of the 12th

	May-12	Apr-12	May-11	OTY
Continued	2,217	2,299	3,138	-921

Texas Unemployment Insurance Claims

Continued Claims for the Week of the 12th

	May-12	Apr-12	May-11	OTY
Continued	125,238	126,440	139,657	-14,419

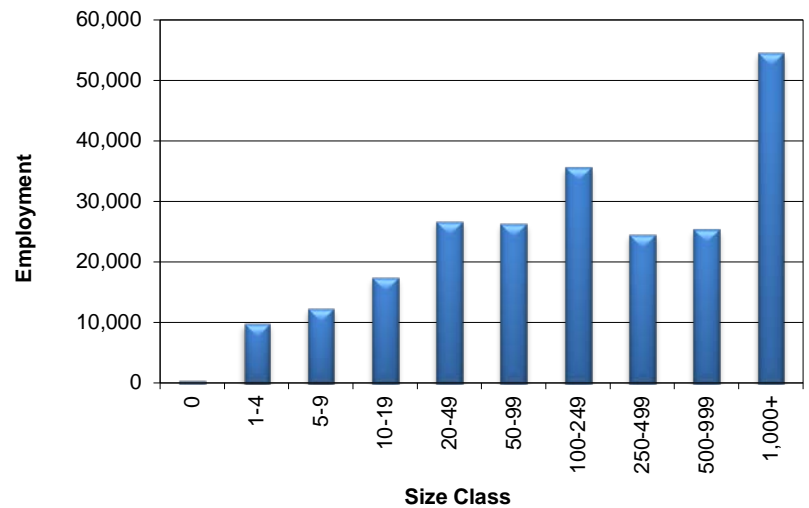
Coastal Bend WDA Average Weekly Wage

	Coastal Bend	Texas
4th Quarter 2011	\$825.16	\$972.70
3rd Quarter 2011	\$787.02	\$931.66
4th Quarter 2010	\$805.24	\$976.19
Quarter Change	\$38.14	\$41.04
OTY Change	\$19.92	-\$3.49

NAICS Covered Employment Quarterly Data 4th Quarter 2011

SUPER SECTOR	Employment	Change	
		Quarter	Year
Construction	18,246	1,362	1,799
Education & Health Services	38,657	-150	815
Federal	8,610	-38	17
Financial Activities	9,404	76	487
Information	2,275	-3	-57
Leisure & Hospitality	25,667	-847	1,357
Local	29,030	1,371	-1,784
Manufacturing	11,228	294	748
Natural Resources & Mining	15,812	932	3,541
Nonclassified	45	9	38
Other Services	6,379	-74	132
Professional & Business Services	16,872	78	-375
State	10,020	654	-596
Trade, Transportation, & Utilities	41,172	1,126	1,624
TOTAL	233,417	4,790	7,746

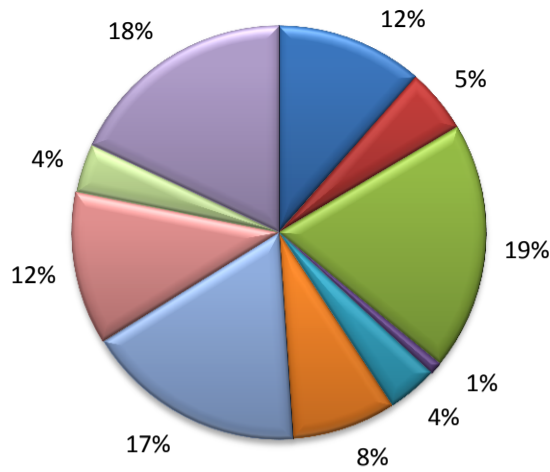
Size Class Employment Composition 4th Quarter 2011



*Counties in WDA: Aransas, Bee, Brooks, Duval, Jim Wells, Kenedy, Kleberg, Live Oak, McMullen, Nueces, Refugio, & San Patricio

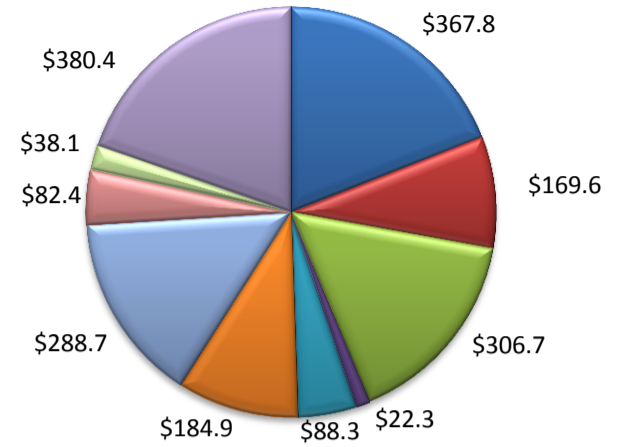
(Aransas, Nueces, San Patricio)

Industry Composition



- Mining, Logging, and Construction
- Manufacturing
- Trade, Transportation, and Utilities
- Information
- Financial Activities
- Professional and Business Services
- Education and Health Services
- Leisure and Hospitality
- Other Services
- Government

Wages by Industry (in millions)
4th Quarter 2011



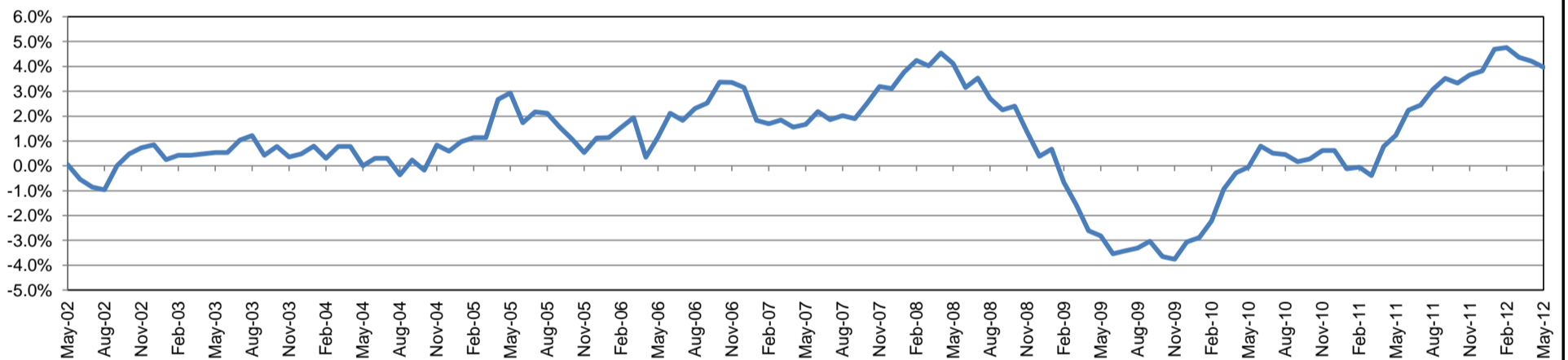
Employment by Industry

	May-12	Apr-12	May-11	Monthly Change		Annual Change	
				Actual	%	Actual	%
Total Nonfarm	188,500	187,800	181,300	700	0.4%	7,200	4.0%
Mining, Logging, and Construction	21,600	21,600	20,300	0	0.0%	1,300	6.4%
Manufacturing	9,500	9,600	9,300	-100	-1.0%	200	2.2%
Trade, Transportation, and Utilities	36,500	35,900	31,600	600	1.7%	4,900	15.5%
Information	1,900	1,900	2,100	0	0.0%	-200	-9.5%
Financial Activities	7,400	7,400	7,400	0	0.0%	0	0.0%
Professional and Business Services	15,300	15,300	15,100	0	0.0%	200	1.3%
Education and Health Services	32,500	32,400	31,500	100	0.3%	1,000	3.2%
Leisure and Hospitality	22,600	22,300	21,900	300	1.4%	700	3.2%
Other Services	7,200	7,100	6,900	100	1.4%	300	4.4%
Government	34,000	34,300	35,200	-300	-0.9%	-1,200	-3.4%

Industry Size Class

Size Class	Employees per firm	Number of Firms	December 2011		
			Employment in Size Class	% Total Employment	
9	1000+	17	41,957	23.5%	
8	500-999	27	18,663	10.4%	
7	250-499	51	16,420	9.2%	
6	100-249	183	27,289	15.3%	
5	50-99	309	21,463	12.0%	
4	20-49	709	21,513	12.0%	
3	10-19	1,028	13,920	7.8%	
2	5-9	1,495	9,854	5.5%	
1	1-4	3,688	7,576	4.2%	
0	0	497	0	0.0%	
Total			8,004	178,655	100.0%

Annual Growth Rate for Total Nonagricultural Employment



Unemployment Information (all estimates in thousands)

	Corpus Christi MSA				Texas (Actual)				United States (Actual)			
	C.L.F.	Emp.	Unemp.	Rate	C.L.F.	Emp.	Unemp.	Rate	C.L.F.	Emp.	Unemp.	Rate
May-12	222.8	208.6	14.2	6.4	12,606.8	11,739.6	867.2	6.9	154,998.0	142,727.0	12,271.0	7.9
Apr-12	221.7	208.3	13.4	6.1	12,548.1	11,734.1	814.0	6.5	153,905.0	141,995.0	11,910.0	7.7
May-11	217.1	200.0	17.1	7.9	12,424.6	11,454.0	970.6	7.8	153,449.0	140,028.0	13,421.0	8.7

Historical Unemployment Rates

