

Coastal Bend Workforce Area

Area	Area Type	Latest Monthly Data May 2011				Previous Monthly Data April 2011				Year Ago May 2010			
		Labor Force	Employment	Unemployment	Rate	Labor Force	Employment	Unemployment	Rate	Labor Force	Employment	Unemployment	Rate
U.S.	Nation	153,449,000	140,028.0	13,421,000	8.7	152,898,000	139,661,000	13,421,000	8.7	153,866,000	139,497,000	14,369,000	9.3
Texas	State	12,241,965	11,269,620	972,345	7.9	12,248,196	11,306,155	942,041	7.7	12,107,298	11,155,447	951,851	7.9
Corpus Christi	MSA	216,497	199,509	16,988	7.8	216,034	199,614	16,420	7.6	212,355	195,899	16,456	7.7
Coastal Bend	WDA	286,685	264,370	22,315	7.8	286,060	264,543	21,517	7.5	282,047	260,048	21,999	7.8
Aransas	County	12,050	11,126	924	7.7	11,980	11,132	848	7.1	11,828	10,925	903	7.6
Bee	County	12,529	11,405	1,124	9.0	12,539	11,464	1,075	8.6	12,329	11,267	1,062	8.6
Brooks	County	3,209	2,920	289	9.0	3,208	2,934	274	8.5	3,261	2,965	296	9.1
Duval	County	5,366	4,867	499	9.3	5,341	4,845	496	9.3	5,322	4,742	580	10.9
Jim Wells	County	21,445	19,867	1,578	7.4	21,283	19,748	1,535	7.2	21,494	19,707	1,787	8.3
Kenedy	County	232	225	7	3.0	234	227	7	3.0	230	223	7	3.0
Kleberg	County	17,402	16,204	1,198	6.9	17,439	16,328	1,111	6.4	17,165	16,008	1,157	6.7
Live Oak	County	5,335	4,984	351	6.6	5,297	4,974	323	6.1	5,289	4,942	347	6.6
McMullen	County	405	382	23	5.7	404	381	23	5.7	368	343	25	6.8
Nueces	County	172,739	159,464	13,275	7.7	172,396	159,548	12,848	7.5	168,837	156,578	12,259	7.3
Refugio	County	4,265	4,007	258	6.0	4,281	4,028	253	5.9	4,235	3,953	282	6.7
San Patricio	County	31,708	28,919	2,789	8.8	31,658	28,934	2,724	8.6	31,689	28,395	3,294	10.4

- Earnings for all occupations Coastal Bend, expressed as hourly rate (TWC):

Coastal Bend	All Occupations-	Average \$16.86/hr.	Entry level \$7.88/hr.	Experienced workers \$21.34/hr.	Top 10% \$30.73/hr.
Texas	All Occupations-	Average \$19.76/hr.	Entry level \$8.51/hr.	Experienced workers \$ 25.38/hr.	Top 10% \$36.91/hr.

- Educational Attainment for population 25 years of age and older - Corpus Christi (Census American Fact Finder / American Community Survey):

Less than 9 th grade	9.3%	12 th grade & GED	26.7%	Associates degree	7.4%	Graduate or Professional degrees	7.0%
9 th thru 11 th grade	11.8%	Some College	24.7%	Bachelors degree	13.0%		

- Median earnings Corpus Christi by education for persons 25 years of age & up (Census AFF / ACS): **\$27,211** (\$36,380 male/ \$22,328 female)

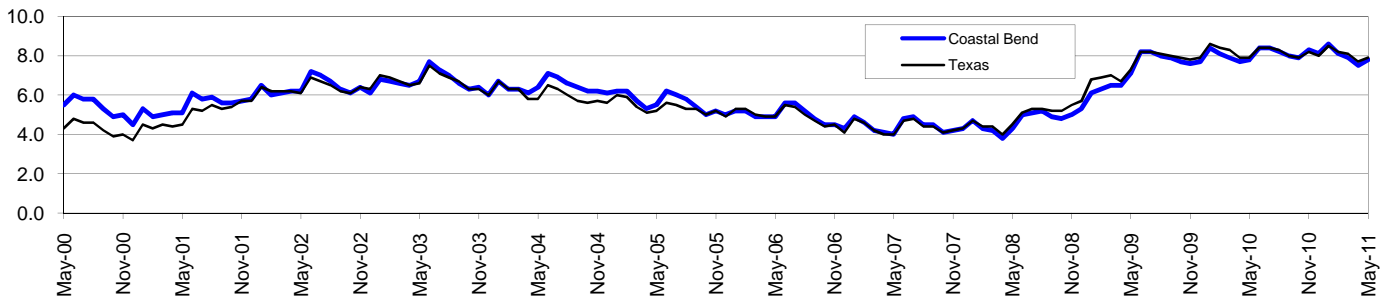
Less than High School	\$15,545	Some College or Associates	\$31,460	Graduate or Professional	\$54,717
High School & GED	\$23,028	Bachelor's	\$43,005		

Coastal Bend Workforce Development Area*

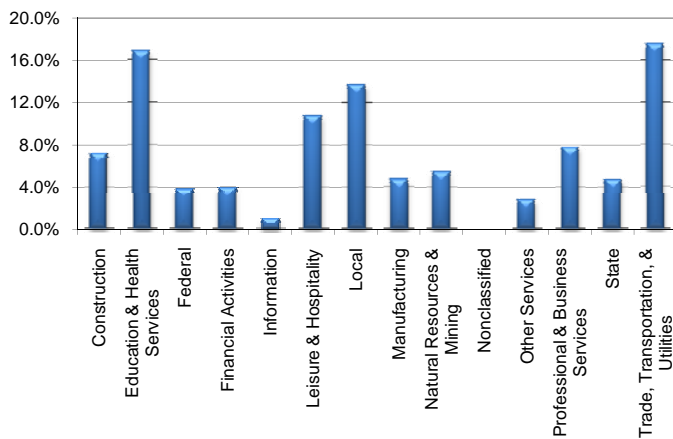
May 2011

Coastal Bend WDA					Texas				
	CLF	Employed	Unemployed	Rate		CLF	Employed	Unemployed	Rate
May-11	286,685	264,370	22,315	7.8	May-11	12,241,965	11,269,620	972,345	7.9
Apr-11	286,060	264,543	21,517	7.5	Apr-11	12,248,196	11,306,155	942,041	7.7
May-10	282,047	260,048	21,999	7.8	May-10	12,107,298	11,155,447	951,851	7.9

Historical Unemployment Rates



Coastal Bend WDA Industry Composition 4th Quarter 2010



Total WDA Claims

	May-11	Apr-11	May-10	OTY
Initial	1,929	2,016	2,395	-466
Continued	8,108	6,741	10,432	-2,324
Continued Claims for the Week of the 12th				
Continued	7,086	6,713	7,984	-898

Texas Unemployment Insurance Claims Filed

	May-11	Apr-11	May-10	OTY
Initial	87,531	85,301	88,051	-520
Continued	859,172	736,646	1,004,012	-144,840
Continued Claims for the Week of the 12th				
Continued	172,421	171,736	211,257	-38,836

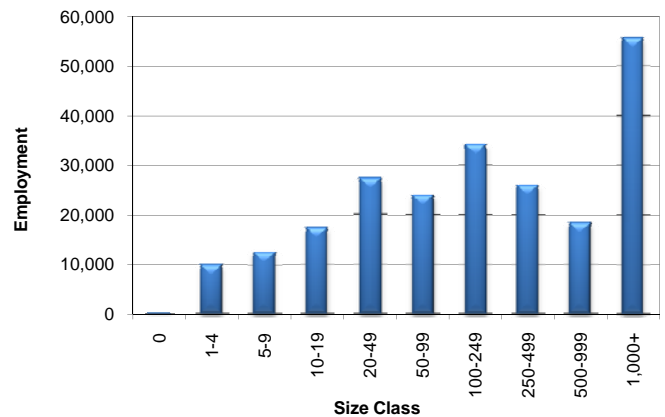
Coastal Bend WDA Average Weekly Wage

	Coastal Bend	WDA Qtr. Chg.	Texas
4th Quarter 2010	\$804.44	\$77.41	\$976.43
3rd Quarter 2010	\$727.03	WDA OTY Chg.	\$876.28
4th Quarter 2009	\$761.97	\$42.47	\$943.73

NAICS Covered Employment Quarterly Data 4th Quarter 2010

SUPER SECTOR	Employment	Change	
		Quarter	Year
Construction	16,191	-73	-606
Education & Health Services	37,842	-156	863
Federal	8,596	-184	88
Financial Activities	8,913	-26	-242
Information	2,332	-54	-198
Leisure & Hospitality	24,294	-1,358	57
Local	30,815	2,215	40
Manufacturing	10,477	133	-51
Natural Resources & Mining	12,233	285	2,054
Nonclassified	34	6	4
Other Services	6,237	-26	27
Professional & Business Services	17,309	434	356
State	10,616	690	221
Trade, Transportation, & Utilities	39,524	266	530
TOTAL	225,413	2,152	3,143

Size Class Employment Composition 4th Quarter 2010



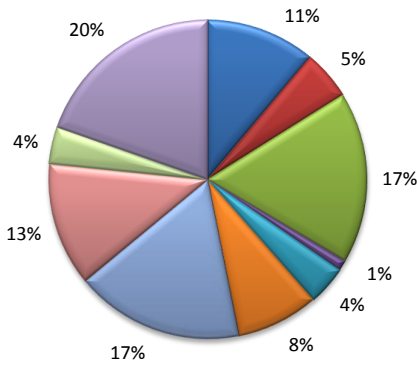
*Counties in WDA: Aransas, Bee, Brooks, Duval, Jim Wells, Kenedy, Kleberg, Live Oak, McMullen, Nueces, Refugio, & San Patricio

Corpus Christi MSA

(Aransas, Nueces, San Patricio)

May 2011

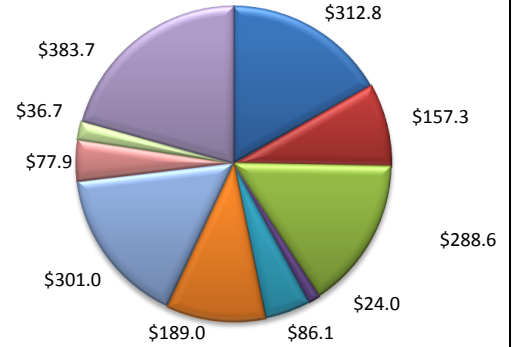
Industry Composition



- Mining, Logging, and Construction
- Manufacturing
- Trade, Transportation, and Utilities
- Information
- Financial Activities
- Professional and Business Services
- Education and Health Services
- Leisure and Hospitality
- Other Services
- Government

Wages by Industry (in millions)

4th Quarter 2010



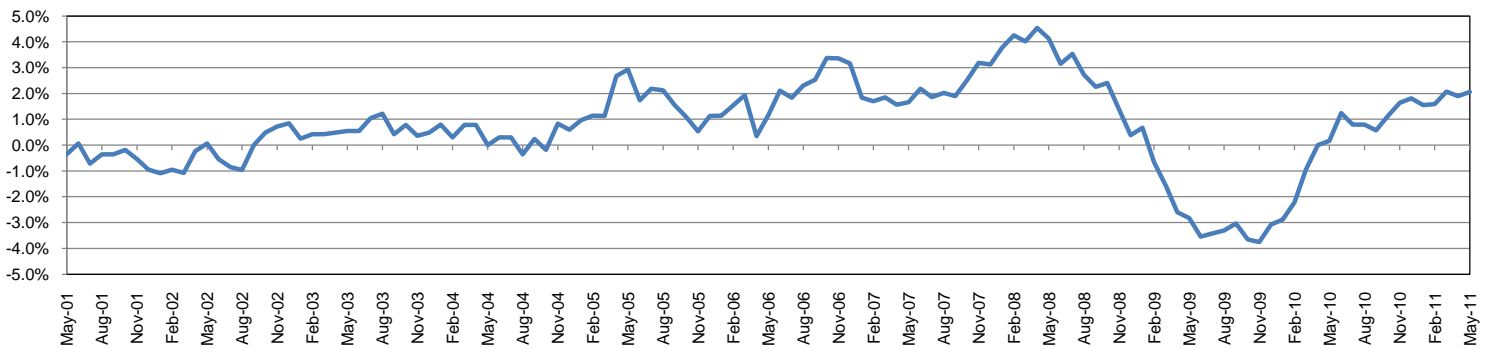
Employment by Industry

				Monthly Change		Annual Change	
	May-11	Apr-11	May-10	Actual	%	Actual	%
Total Nonfarm	183,200	182,700	179,500	500	0.3%	3,700	2.1%
Mining, Logging, and Construction	20,300	20,200	19,400	100	0.5%	900	4.6%
Manufacturing	9,200	9,200	9,200	0	0.0%	0	0.0%
Trade, Transportation, and Utilities	31,800	31,500	31,000	300	1.0%	800	2.6%
Information	2,000	2,000	2,200	0	0.0%	-200	-9.1%
Financial Activities	7,300	7,200	7,400	100	1.4%	-100	-1.4%
Professional and Business Services	15,200	15,300	15,000	-100	-0.7%	200	1.3%
Education and Health Services	31,500	31,500	30,600	0	0.0%	900	2.9%
Leisure and Hospitality	23,000	22,700	21,700	300	1.3%	1,300	6.0%
Other Services	6,900	6,900	7,000	0	0.0%	-100	-1.4%
Government	36,000	36,200	36,000	-200	-0.6%	0	0.0%

Industry Size Class

				December 2010	
Size Class	Employees per firm	Number of Firms	Employment in Size Class	% Total Employment	
9	1000+	19	44,146	25.2%	
8	500-999	21	14,696	8.4%	
7	250-499	47	15,777	9.0%	
6	100-249	174	26,606	15.2%	
5	50-99	287	20,148	11.5%	
4	20-49	726	22,020	12.6%	
3	10-19	1,013	13,753	7.9%	
2	5-9	1,504	10,038	5.7%	
1	1-4	3,723	7,695	4.4%	
0	0	527	0	0.0%	
Total		8,041	174,879	100.0%	

Annual Growth Rate for Total Nonagricultural Employment



Unemployment Information (all estimates in thousands)

	Corpus Christi MSA				Texas (Actual)				United States (Actual)			
	C.L.F.	Emp.	Unemp.	Rate	C.L.F.	Emp.	Unemp.	Rate	C.L.F.	Emp.	Unemp.	Rate
May-11	216.5	199.5	17.0	7.8	12,241.9	11,269.6	972.3	7.9	153,449.0	140,028.0	13,421.0	8.7
Apr-11	216.0	199.6	16.4	7.6	12,248.2	11,306.2	942.0	7.7	152,898.0	139,661.0	13,237.0	8.7
May-10	212.4	195.9	16.5	7.7	12,107.3	11,155.4	951.9	7.9	153,866.0	139,497.0	14,369.0	9.3

Historical Unemployment Rates

