

Coastal Bend Workforce Area

(Not Seasonally Adjusted Unemployment Rates by WDA, MSA, & County)

Area	Area Type	Latest Monthly Data March 2014						Previous Monthly Data February 2014				Year Ago March 2013			
		Labor Force	Employment	Unemployment	Rate	M+-	Y+-	Labor Force	Employment	Unemployment	Rate	Labor Force	Employment	Unemployment	Rate
United States	Nation	155,627,000	145,090,000	10,537,000	6.8	-0.2	-0.8	155,027,000	144,134,000	10,893,000	7.0	154,512,000	142,698,000	11,815,000	7.6
Texas	State	12,955,590	12,263,096	692,494	5.3	-0.6	-1.0	12,906,314	12,150,460	755,854	5.9	12,723,227	11,917,373	805,854	6.3
Corpus Christi	MSA	221,255	209,980	11,275	5.1	-0.5	-0.9	219,009	206,724	12,285	5.6	218,625	205,599	13,026	6.0
Coastal Bend	WDA	302,623	287,650	14,973	4.9	-0.5	-0.9	299,836	283,552	16,284	5.4	296,668	279,496	17,172	5.8
Aransas	County	11,238	10,668	570	5.1	-0.5	-0.6	11,129	10,503	626	5.6	11,076	10,446	630	5.7
Bee	County	14,284	13,528	756	5.3	-0.5	-1.3	14,222	13,395	827	5.8	13,279	12,406	873	6.6
Brooks	County	3,639	3,421	218	6.0	-0.5	-0.8	3,597	3,364	233	6.5	3,488	3,250	238	6.8
Duval	County	6,244	5,907	337	5.4	-0.5	-0.7	6,183	5,818	365	5.9	5,945	5,581	364	6.1
Jim Wells	County	25,090	23,985	1,105	4.4	-0.5	-0.5	24,965	23,753	1,212	4.9	24,628	23,429	1,199	4.9
Kenedy	County	288	275	13	4.5	0.3	1.9	285	273	12	4.2	273	266	7	2.6
Kleberg	County	18,547	17,700	847	4.6	-0.3	-0.9	18,490	17,584	906	4.9	18,053	17,084	969	5.4
Live Oak	County	7,438	7,195	243	3.3	-0.2	-0.7	7,348	7,090	258	3.5	7,045	6,765	280	4.0
McMullen	County	956	937	19	2.0	-0.3	-0.6	907	886	21	2.3	734	715	19	2.6
Nueces	County	180,358	171,522	8,836	4.9	-0.5	-0.8	178,442	168,862	9,580	5.4	178,173	167,944	10,229	5.7
Refugio	County	4,882	4,723	159	3.3	-0.1	-1.0	4,830	4,665	165	3.4	4,598	4,400	198	4.3
San Patricio	County	29,659	27,789	1,870	6.3	-0.8	-0.9	29,438	27,359	2,079	7.1	29,376	27,210	2,166	7.4

(M+-) Change in unemployment rate from last month (Increase) (Decrease)

(Y+-) Change in unemployment rate from last year (Increase) (Decrease)

- Earnings for all occupations Coastal Bend, expressed as hourly rate (TWC):

Coastal Bend	All Occupations-	Average \$18.35/hr.	Entry level \$8.58/hr.	Experienced workers \$23.24/hr.	Top 10% \$33.56/hr.
Texas	All Occupations-	Average \$20.97/hr.	Entry level \$8.88/hr.	Experienced workers \$ 27.02/hr.	Top 10% \$39.64/hr.

- Educational Attainment for population 25 years of age and older - Corpus Christi (Census American Fact Finder/American Community Survey):

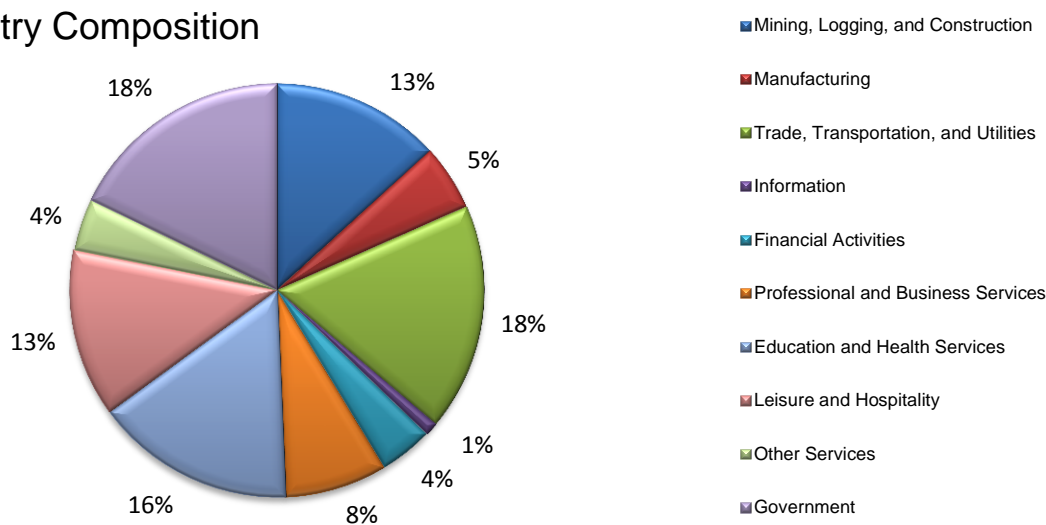
Less than 9 th grade	9.6%	12 th grade & GED	26.9%	Associates degree	6.9%	Graduate or Professional degrees	7.0%
9 th thru 11 th grade	11.2%	Some College	25.8%	Bachelors degree	12.6%		

- Median earnings Corpus Christi by education for persons 25 years of age & up (Census AFF/ACS): **\$27,211** (\$36,380 male/ \$22,328 female)

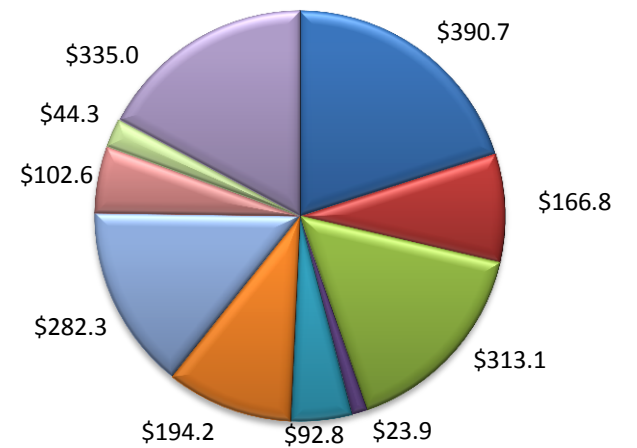
Less than High School	\$17,318	Some College or Associates	\$31,393	Graduate or Professional	\$55,582
High School & GED	\$25,804	Bachelor's	\$45,812		

(Aransas, Nueces, San Patricio)

Industry Composition



Wages by Industry (in millions)
3rd Quarter 2013



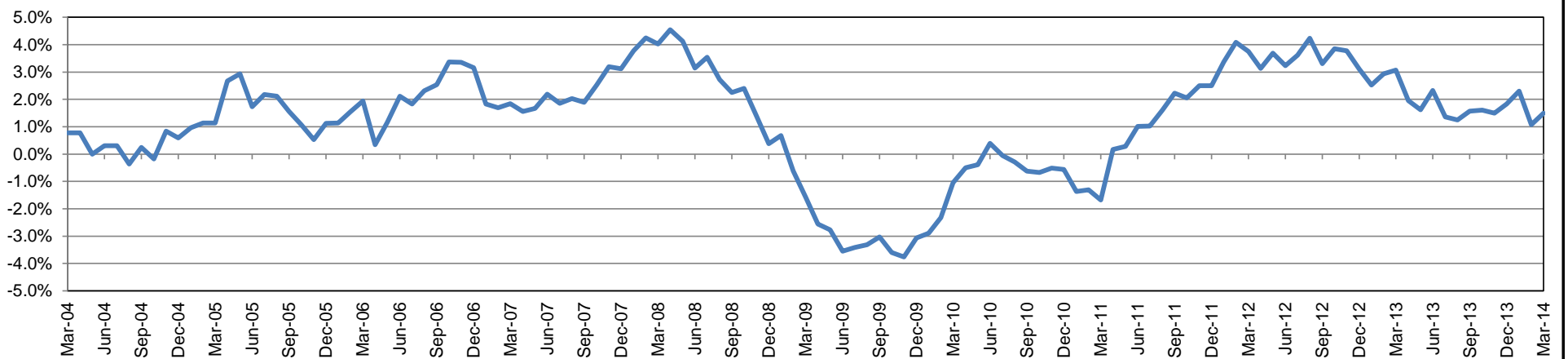
Employment by Industry

	Mar-14	Feb-14	Mar-13	Monthly Change		Annual Change	
				Actual	%	Actual	%
Total Nonfarm	190,900	188,400	188,100	2,500	1.3%	2,800	1.5%
Mining, Logging, and Construction	25,300	24,600	23,900	700	2.9%	1,400	5.9%
Manufacturing	9,800	9,800	9,700	0	0.0%	100	1.0%
Trade, Transportation, and Utilities	33,900	33,600	32,800	300	0.9%	1,100	3.4%
Information	2,000	2,000	2,100	0	0.0%	-100	-4.8%
Financial Activities	7,900	7,800	7,700	100	1.3%	200	2.6%
Professional and Business Services	15,300	15,200	16,000	100	0.7%	-700	-4.4%
Education and Health Services	29,800	29,900	30,000	-100	-0.3%	-200	-0.7%
Leisure and Hospitality	25,100	24,000	24,400	1,100	4.6%	700	2.9%
Other Services	7,800	7,700	7,600	100	1.3%	200	2.6%
Government	34,000	33,800	33,900	200	0.6%	100	0.3%

Industry Size Class September 2013

Size Class	Employees per firm	Number of Firms	Employment in Size Class	% Total Employment
9	1000+	17	39,434	21.3%
8	500-999	28	18,723	10.1%
7	250-499	51	17,222	9.3%
6	100-249	206	31,566	17.1%
5	50-99	313	22,117	11.9%
4	20-49	808	24,208	13.1%
3	10-19	1,048	14,281	7.7%
2	5-9	1,514	10,081	5.4%
1	1-4	3,597	7,457	4.0%
0	0	555	0	0.0%
Total		8,137	185,089	100.0%

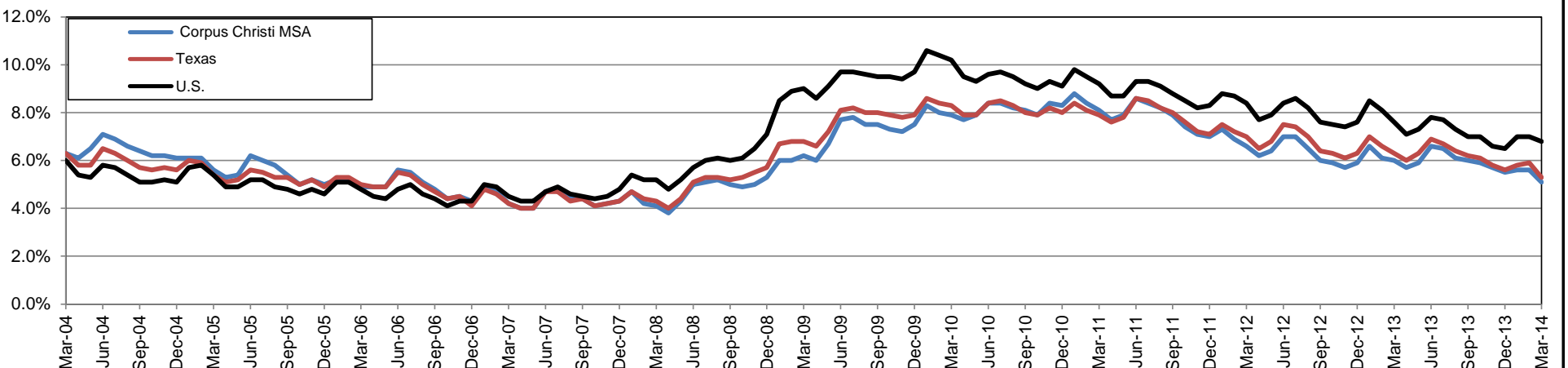
Annual Growth Rate for Total Nonagricultural Employment



Unemployment Information (all estimates in thousands)

	Corpus Christi MSA				Texas (Actual)				United States (Actual)			
	C.L.F.	Emp.	Unemp.	Rate	C.L.F.	Emp.	Unemp.	Rate	C.L.F.	Emp.	Unemp.	Rate
Mar-14	221.3	210.0	11.3	5.1	12,955.6	12,263.1	692.5	5.3	155,627.0	145,090.0	10,537.0	6.8
Feb-14	219.0	206.7	12.3	5.6	12,906.4	12,150.5	755.9	5.9	155,027.0	144,134.0	10,893.0	7.0
Mar-13	218.6	205.6	13.0	6.0	12,723.3	11,917.4	805.9	6.3	154,512.0	142,698.0	11,815.0	7.6

Historical Unemployment Rates

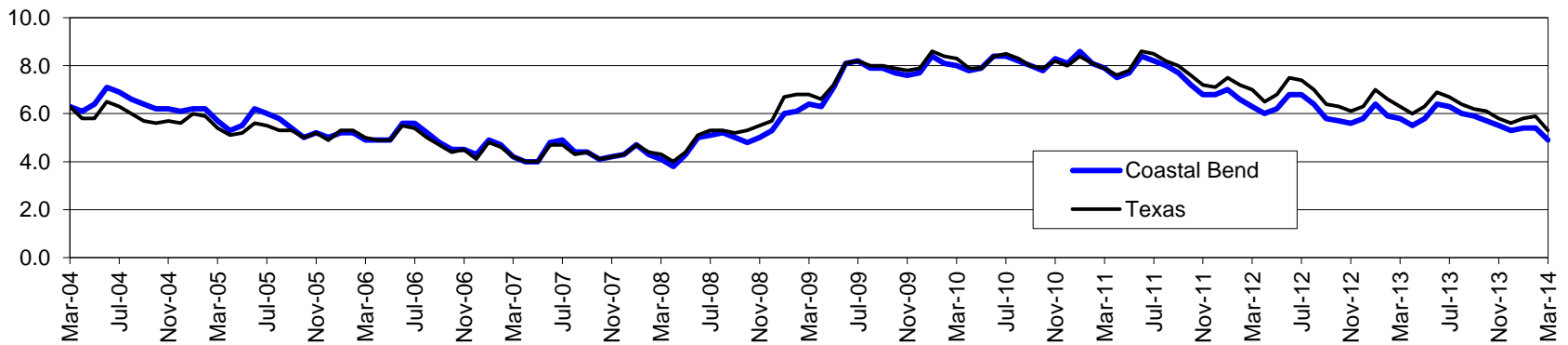


Coastal Bend Workforce Development Area*

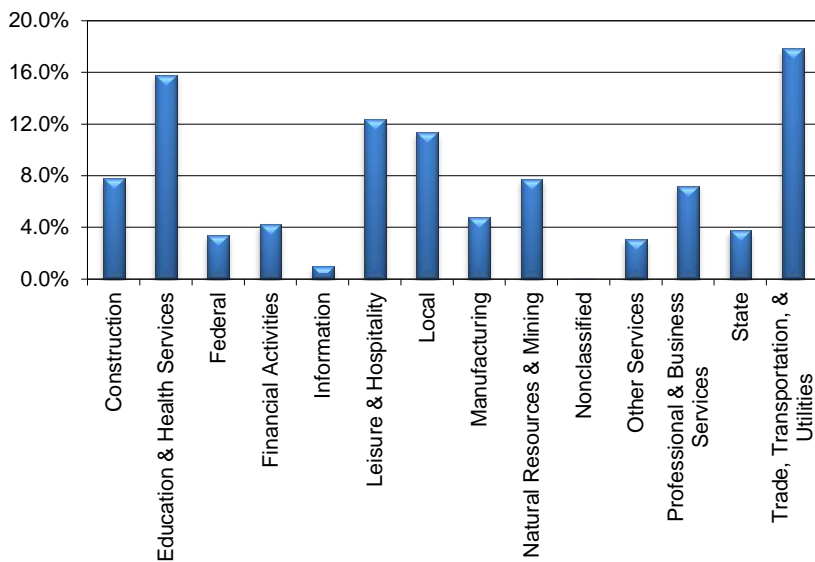
March 2014

Coastal Bend WDA					Texas				
	CLF	Employed	Unemployed	Rate		CLF	Employed	Unemployed	Rate
Mar-14	302,623	287,650	14,973	4.9	Mar-14	12,955,590	12,263,096	692,494	5.3
Feb-14	299,836	283,552	16,284	5.4	Feb-14	12,906,314	12,150,460	755,854	5.9
Mar-13	296,668	279,496	17,172	5.8	Mar-13	12,723,227	11,917,373	805,854	6.3

Historical Unemployment Rates



Coastal Bend WDA Industry Composition 3rd Quarter 2013



Total WDA Claims

Continued Claims for the Week of the 12th

	Mar-14	Feb-14	Mar-13	OTY
Continued	2,656	2,663	2,717	-61

Texas Unemployment Insurance Claims

Continued Claims for the Week of the 12th

	Mar-14	Feb-14	Mar-13	OTY
Continued	129,200	130,397	129,222	-22

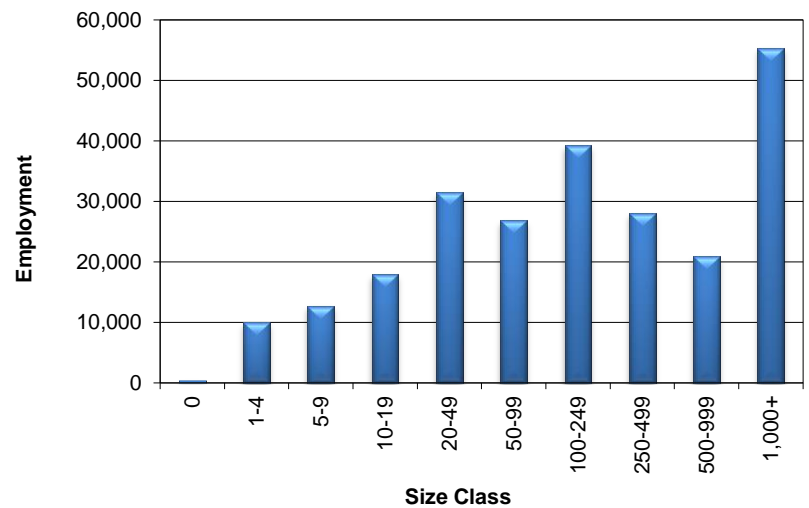
Coastal Bend WDA Average Weekly Wage

	Coastal Bend	Texas
3rd Quarter 2013	\$807.87	\$952.05
2nd Quarter 2013	\$801.78	\$943.59
3rd Quarter 2012	\$795.31	\$929.04
Quarter Change	\$6.09	\$8.46
OTY Change	\$12.56	\$23.01

NAICS Covered Employment Quarterly Data 3rd Quarter 2013

SUPER SECTOR	Employment	Change	
		Quarter	Year
Construction	18,846	652	1,144
Education & Health Services	38,289	-137	-176
Federal	8,101	-23	-520
Financial Activities	10,172	180	558
Information	2,361	-23	45
Leisure & Hospitality	29,939	118	1,305
Local	27,469	-1,677	310
Manufacturing	11,508	58	52
Natural Resources & Mining	18,758	19	639
Nonclassified	83	37	30
Other Services	7,368	86	-70
Professional & Business Services	17,443	-250	87
State	9,065	-295	286
Trade, Transportation, & Utilities	43,183	462	1,202
TOTAL	242,585	-793	4,892

Size Class Employment Composition 3rd Quarter 2013



*Counties in WDA: Aransas, Bee, Brooks, Duval, Jim Wells, Kenedy, Kleberg, Live Oak, McMullen, Nueces, Refugio, & San Patricio