

Coastal Bend Workforce Area

(Not Seasonally Adjusted Unemployment Rates by WDA, MSA, & County)

Area	Area Type	Latest Monthly Data March 2013						Previous Monthly Data February 2013				Year Ago March 2012			
		Labor Force	Employment	Unemployment	Rate	M+-	Y+-	Labor Force	Employment	Unemployment	Rate	Labor Force	Employment	Unemployment	Rate
United States	Nation	154,512,000	14,698,000	11,815,000	7.6	-0.5	-0.8	154,727,000	142,228,000	12,500,000	8.1	154,316,000	141,412,000	12,904,000	8.4
Texas	State	12,686,094	11,885,771	800,323	6.3	-0.1	-0.7	12,662,092	11,845,698	816,394	6.4	12,548,713	11,671,807	876,906	7.0
Corpus Christi	MSA	220,540	207,599	12,941	5.9	0.0	-0.7	218,670	205,749	12,921	5.9	216,123	201,901	14,222	6.6
Coastal Bend	WDA	300,128	283,031	17,097	5.7	-0.1	-0.7	298,050	280,893	17,157	5.8	293,205	274,577	18,628	6.4
Aransas	County	11,114	10,487	627	5.6	-0.5	-0.7	11,068	10,394	674	6.1	10,880	10,199	681	6.3
Bee	County	13,194	12,324	870	6.6	-0.1	-0.4	13,126	12,241	885	6.7	12,845	11,944	901	7.0
Brooks	County	3,394	3,153	241	7.1	0.1	-0.2	3,376	3,141	235	7.0	3,386	3,139	247	7.3
Duval	County	6,065	5,700	365	6.0	-0.2	-1.2	6,023	5,650	373	6.2	5,806	5,389	417	7.2
Jim Wells	County	26,292	25,100	1,192	4.5	-0.2	-0.5	26,121	24,902	1,219	4.7	25,047	23,795	1,252	5.0
Kenedy	County	270	263	7	2.6	-0.3	-0.3	272	264	8	2.9	275	267	8	2.9
Kleberg	County	17,800	16,818	982	5.5	-0.1	-0.3	17,937	16,935	1,002	5.6	18,140	17,079	1,061	5.8
Live Oak	County	7,242	6,963	279	3.9	-0.1	-0.6	7,230	6,943	287	4.0	6,440	6,151	289	4.5
McMullen	County	698	679	19	2.7	-0.5	-0.2	698	676	22	3.2	626	608	18	2.9
Nueces	County	179,801	169,644	10,157	5.6	-0.1	-0.8	178,219	168,132	10,087	5.7	176,280	164,988	11,292	6.4
Refugio	County	4,633	4,432	201	4.3	-0.2	-0.4	4,597	4,392	205	4.5	4,516	4,304	212	4.7
San Patricio	County	29,625	27,468	2,157	7.3	-0.1	-0.5	29,383	27,223	2,160	7.4	28,964	26,714	2,250	7.8

(M+-) Change in unemployment rate from last month (Increase) (Decrease)

(Y+-) Change in unemployment rate from last year (Increase) (Decrease)

- Earnings for all occupations Coastal Bend, expressed as hourly rate (TWC):

Coastal Bend	All Occupations-	Average \$17.28/hr.	Entry level \$8.30/hr.	Experienced workers \$21.77/hr.	Top 10% \$31.60/hr.
Texas	All Occupations-	Average \$20.30/hr.	Entry level \$9.62/hr.	Experienced workers \$ 25.68/hr.	Top 10% \$37.83/hr.

- Educational Attainment for population 25 years of age and older - Corpus Christi (Census American Fact Finder/American Community Survey):

Less than 9 th grade	9.3%	12 th grade & GED	26.7%	Associates degree	7.4%	Graduate or Professional degrees	7.0%
9 th thru 11 th grade	11.8%	Some College	24.7%	Bachelors degree	13.0%		

- Median earnings Corpus Christi by education for persons 25 years of age & up (Census AFF/ACS): \$27,211 (\$36,380 male/ \$22,328 female)

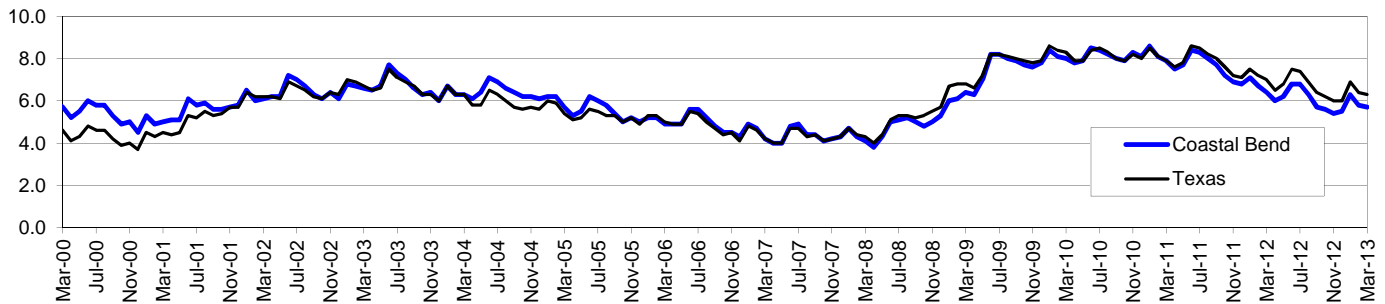
Less than High School	\$15,545	Some College or Associates	\$31,460	Graduate or Professional	\$54,717
High School & GED	\$23,028	Bachelor's	\$43,005		

Coastal Bend Workforce Development Area*

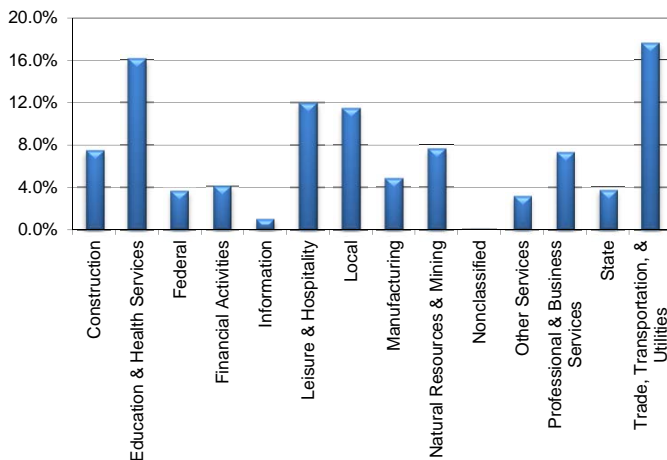
March 2013

Coastal Bend WDA					Texas				
	CLF	Employed	Unemployed	Rate		CLF	Employed	Unemployed	Rate
Mar-13	300,128	283,031	17,097	5.7	Mar-13	12,686,094	11,885,771	800,323	6.3
Feb-13	298,050	280,893	17,157	5.8	Feb-13	12,662,092	11,845,698	816,394	6.4
Mar-12	293,205	274,577	18,628	6.4	Mar-12	12,548,713	11,671,807	876,906	7.0

Historical Unemployment Rates



Coastal Bend WDA Industry Composition 3rd Quarter 2012



Total WDA Claims

Continued Claims for the Week of the 12th

	Mar-13	Feb-13	Mar-12	OTY
Continued	2,692	2,484	2,299	393

Texas Unemployment Insurance Claims

Continued Claims for the Week of the 12th

	Mar-13	Feb-13	Mar-12	OTY
Continued	127,877	128,829	133,295	-5,418

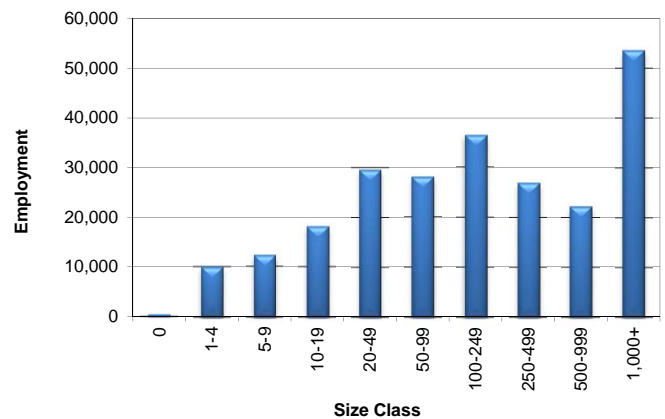
Coastal Bend WDA Average Weekly Wage

	Coastal Bend	Texas
3rd Quarter 2012	\$798.99	\$929.84
2nd Quarter 2012	\$793.24	\$922.14
3rd Quarter 2011	\$782.72	\$931.54
Quarter Change	\$5.75	\$7.70
OTY Change	\$16.27	-\$1.70

NAICS Covered Employment Quarterly Data 3rd Quarter 2012

SUPER SECTOR	Employment	Change	
		Quarter	Year
Construction	17,693	-697	809
Education & Health Services	38,267	-127	-2,077
Federal	8,621	8	-27
Financial Activities	9,607	138	279
Information	2,315	11	37
Leisure & Hospitality	28,432	474	1,949
Local	27,160	-2,015	-232
Manufacturing	11,458	88	524
Natural Resources & Mining	18,112	602	3,232
Nonclassified	69	38	34
Other Services	7,429	258	976
Professional & Business Services	17,348	-250	554
State	8,779	-697	-587
Trade, Transportation, & Utilities	41,730	419	1,683
TOTAL	237,020	-1,750	7,154

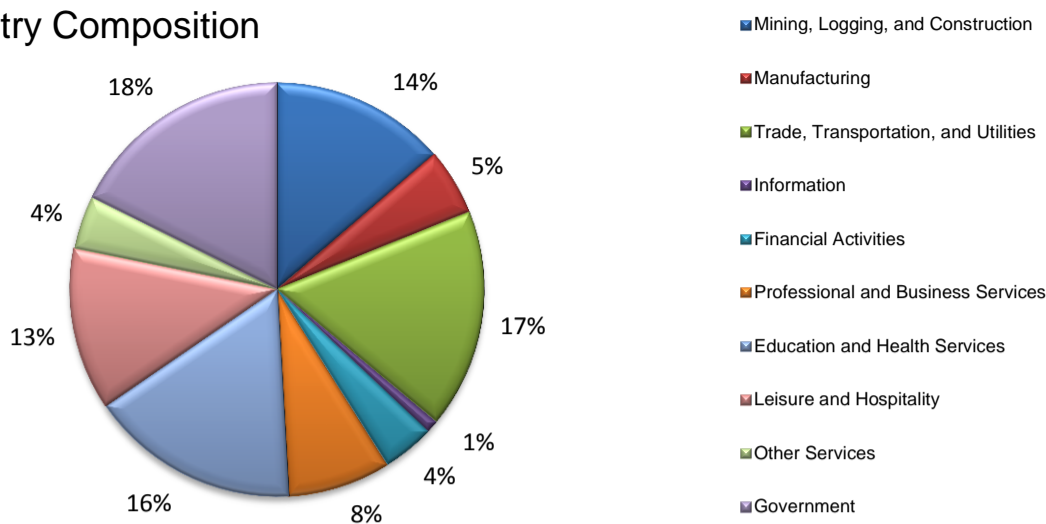
Size Class Employment Composition 3rd Quarter 2012



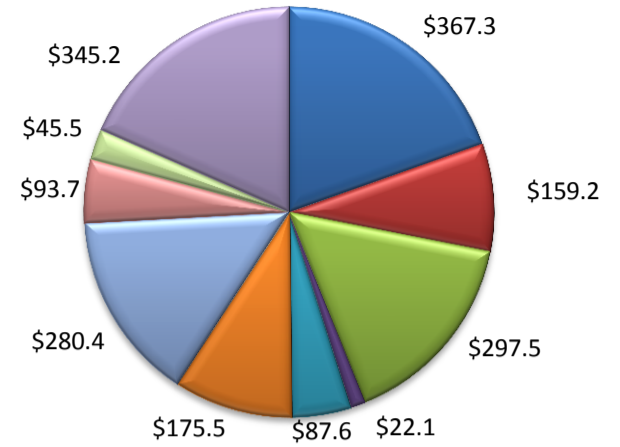
*Counties in WDA: Aransas, Bee, Brooks, Duval, Jim Wells, Kenedy, Kleberg, Live Oak, McMullen, Nueces, Refugio, & San Patricio

(Aransas, Nueces, San Patricio)

Industry Composition



Wages by Industry (in millions)
3rd Quarter 2012



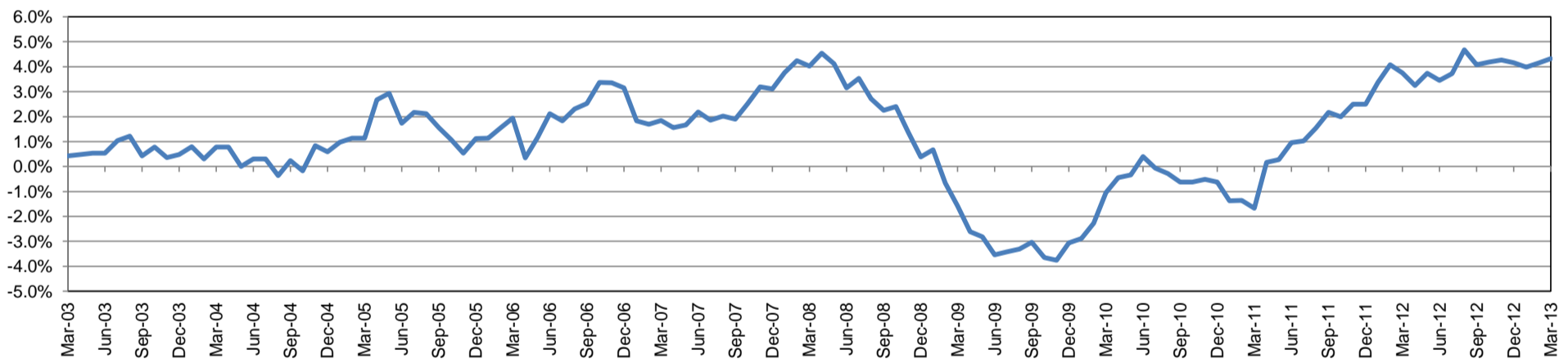
Employment by Industry

	Mar-13	Feb-13	Mar-12	Monthly Change		Annual Change	
				Actual	%	Actual	%
Total Nonfarm	190,400	188,500	182,500	1,900	1.0%	7,900	4.3%
Mining, Logging, and Construction	26,100	25,600	22,100	500	2.0%	4,000	18.1%
Manufacturing	9,900	9,800	9,800	100	1.0%	100	1.0%
Trade, Transportation, and Utilities	32,600	32,500	31,800	100	0.3%	800	2.5%
Information	1,900	1,900	2,000	0	0.0%	-100	-5.0%
Financial Activities	7,700	7,600	7,400	100	1.3%	300	4.1%
Professional and Business Services	15,300	15,300	15,400	0	0.0%	-100	-0.7%
Education and Health Services	31,200	31,200	30,300	0	0.0%	900	3.0%
Leisure and Hospitality	24,100	23,100	22,200	1,000	4.3%	1,900	8.6%
Other Services	8,000	8,000	7,400	0	0.0%	600	8.1%
Government	33,600	33,500	34,100	100	0.3%	-500	-1.5%

Industry Size Class September 2012

Size Class	Employees per firm	Number of Firms	Employment in Size Class	% Total Employment
9	1000+	17	39,903	22.1%
8	500-999	26	17,726	9.8%
7	250-499	49	16,264	9.0%
6	100-249	193	29,429	16.3%
5	50-99	326	22,848	12.6%
4	20-49	768	23,127	12.8%
3	10-19	1,060	14,361	7.9%
2	5-9	1,445	9,608	5.3%
1	1-4	3,626	7,622	4.2%
0	0	529	0	0.0%
Total		8,039	180,888	100.0%

Annual Growth Rate for Total Nonagricultural Employment



Unemployment Information (all estimates in thousands)

	Corpus Christi MSA				Texas (Actual)				United States (Actual)			
	C.L.F.	Emp.	Unemp.	Rate	C.L.F.	Emp.	Unemp.	Rate	C.L.F.	Emp.	Unemp.	Rate
Mar-13	220.5	207.6	12.9	5.9	12,686.1	11,885.8	800.3	6.3	154,512.0	142,698.0	11,815.0	7.6
Feb-13	218.6	205.7	12.9	5.9	12,662.1	11,845.7	816.4	6.4	154,727.0	142,228.0	12,500.0	8.1
Mar-12	216.1	201.9	14.2	6.6	12,548.7	11,671.8	876.9	7.0	154,316.0	141,412.0	12,904.0	8.4

Historical Unemployment Rates

