

# Coastal Bend Workforce Area

Area	Area Type	Latest Monthly Data March 2011				Previous Monthly Data February 2011				Year Ago March 2010			
		Labor Force	Employment	Unemployment	Rate	Labor Force	Employment	Unemployment	Rate	Labor Force	Employment	Unemployment	Rate
U.S.	Nation	153,022,000	138,962,000	14,060,000	9.2	152,635,000	138,093,000	14,542,000	9.5	153,660,000	137,983,000	15,678,000	10.2
Texas	State	12,216,063	11,231,652	984,411	8.1	12,152,354	11,160,297	992,057	8.2	12,074,606	11,076,701	997,905	8.3
Corpus Christi	MSA	216,873	199,678	17,195	7.9	213,278	195,814	17,464	8.2	212,852	196,253	16,599	7.8
Coastal Bend	WDA	286,793	264,216	22,577	7.9	282,662	259,752	22,910	8.1	282,583	260,142	22,441	7.9
Aransas	County	12,079	11,136	943	7.8	11,895	10,920	975	8.2	11,939	10,945	994	8.3
Bee	County	12,664	11,535	1,129	8.9	12,476	11,349	1,127	9.0	12,473	11,377	1,096	8.8
Brooks	County	3,188	2,890	298	9.3	3,135	2,848	287	9.2	3,228	2,925	303	9.4
Duval	County	5,367	4,815	552	10.3	5,311	4,738	573	10.8	5,324	4,692	632	11.9
Jim Wells	County	21,124	19,520	1,604	7.6	21,017	19,391	1,626	7.7	21,448	19,538	1,910	8.9
Kenedy	County	232	225	7	3.0	232	225	7	3.0	248	221	27	10.9
Kleberg	County	17,370	16,201	1,169	6.7	17,371	16,156	1,215	7.0	17,101	15,923	1,178	6.9
Live Oak	County	5,309	4,982	327	6.2	5,269	4,954	315	6.0	5,331	4,950	381	7.1
McMullen	County	379	355	24	6.3	368	344	24	6.5	366	345	21	5.7
Nueces	County	172,908	159,599	13,309	7.7	169,895	156,510	13,385	7.9	169,164	156,861	12,303	7.3
Refugio	County	4,287	4,015	272	6.3	4,206	3,934	272	6.5	4,212	3,918	294	7.0
San Patricio	County	31,886	28,943	2,943	9.2	31,487	28,383	3,104	9.9	31,749	28,447	3,302	10.4

- Earnings for all occupations Coastal Bend, expressed as hourly rate (TWC):

Coastal Bend	All Occupations-	Average \$16.86/hr.	Entry level \$7.88/hr.	Experienced workers \$21.34/hr.	Top 10% \$30.73/hr.
Texas	All Occupations-	Average \$19.76/hr.	Entry level \$8.51/hr.	Experienced workers \$ 25.38/hr.	Top 10% \$36.91/hr.

- Educational Attainment for population 25 years of age and older - Corpus Christi (Census American Fact Finder / American Community Survey):

Less than 9 <sup>th</sup> grade	9.3%	12 <sup>th</sup> grade & GED	26.7%	Associates degree	7.4%	Graduate or Professional degrees	7.0%
9 <sup>th</sup> thru 11 <sup>th</sup> grade	11.8%	Some College	24.7%	Bachelors degree	13.0%		

- Median earnings Corpus Christi by education for persons 25 years of age & up (Census AFF / ACS): \$27,211 (\$36,380 male/ \$22,328 female)

Less than High School	\$15,545	Some College or Associates	\$31,460	Graduate or Professional	\$54,717
High School & GED	\$23,028	Bachelor's	\$43,005		

**Equal Opportunity Employer/Program**

Auxiliary aids and services are available upon request to individuals with disabilities.

Deaf, hard-of-hearing or speech impaired customers may contact

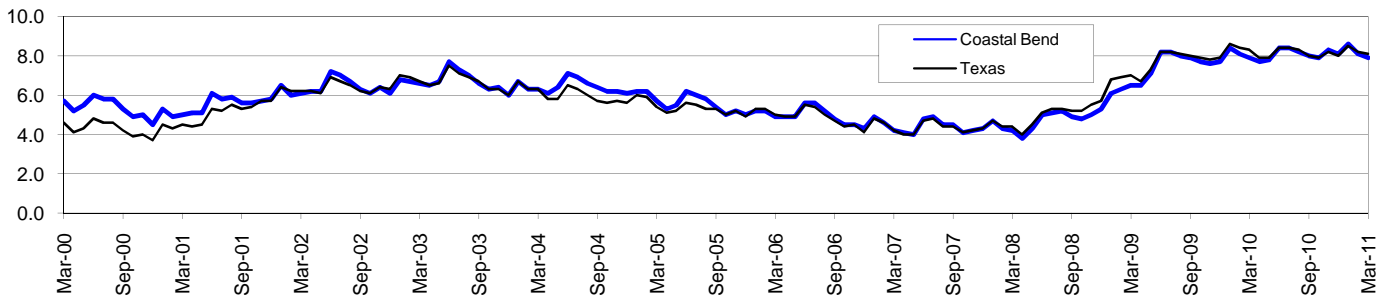
**Relay Texas:** 1-800-735-2989 (TDD) and 1-800-735-2988 or 7-1-1 (Voice)

# Coastal Bend Workforce Development Area\*

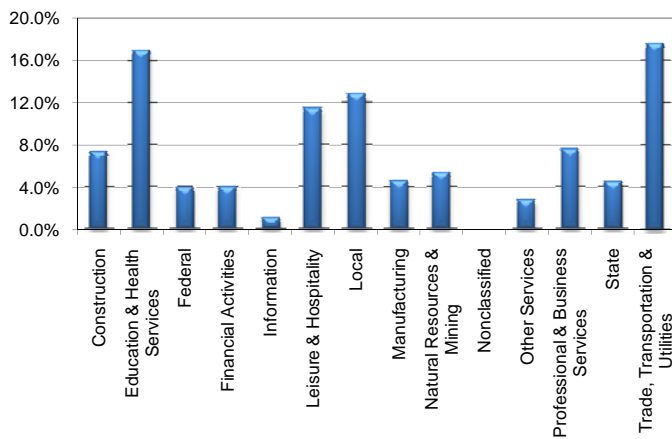
## March 2011

Coastal Bend WDA					Texas				
	CLF	Employed	Unemployed	Rate		CLF	Employed	Unemployed	Rate
Mar-11	286,793	264,216	22,577	7.9	Mar-11	12,216,063	11,231,652	984,411	8.1
Feb-11	282,662	259,752	22,910	8.1	Feb-11	12,152,354	11,160,297	992,057	8.2
Mar-10	282,583	260,142	22,441	7.9	Mar-10	12,074,606	11,076,701	997,905	8.3

### Historical Unemployment Rates



### Coastal Bend WDA Industry Composition 3rd Quarter 2010



### Total WDA Claims

	Mar-11	Feb-11	Mar-10	OTY
Initial	2,044	1,469	2,505	-461
Continued	7,999	7,770	11,345	-3,346
Continued Claims for the Week of the 12th				
Continued	7,193	7,860	8,966	-1,773

### Texas Unemployment Insurance Claims Filed

	Mar-11	Feb-11	Mar-10	OTY
Initial	84,821	69,540	98,362	-13,541
Continued	815,946	795,729	1,088,926	-272,980
Continued Claims for the Week of the 12th				
Continued	183,354	200,536	238,815	-55,461

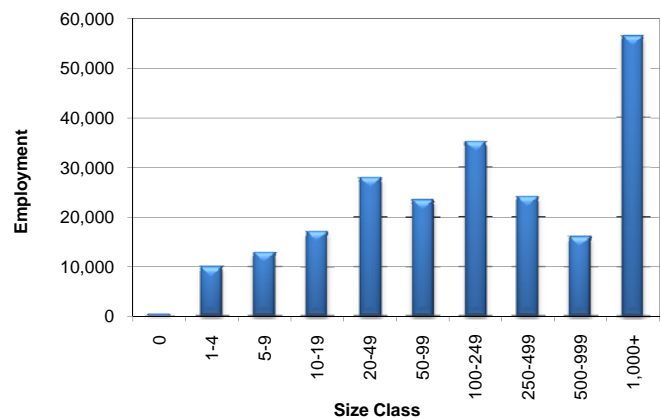
### Coastal Bend WDA Average Weekly Wage

	Coastal Bend	WDA Qtr. Chg.	Texas
3rd Quarter 2010	\$726.14	\$15.67	\$875.52
2nd Quarter 2010	\$710.47	WDA OTY Chg.	\$863.80
3rd Quarter 2009	\$696.82	\$29.32	\$844.49

### NAICS Covered Employment Quarterly Data 3rd Quarter 2010

SUPER SECTOR	Employment	Change	
		Quarter	Year
Construction	16,463	-226	-83
Education & Health Services	37,977	421	1,214
Federal	8,783	-370	260
Financial Activities	8,934	-135	-321
Information	2,377	-88	-195
Leisure & Hospitality	25,509	-600	-373
Local	28,748	-2,101	589
Manufacturing	10,348	158	-305
Natural Resources & Mining	11,940	896	1,676
Nonclassified	38	13	0
Other Services	6,264	-117	-50
Professional & Business Services	16,867	67	300
State	9,925	-381	390
Trade, Transportation & Utilities	39,273	523	316
<b>TOTAL</b>	<b>223,446</b>	<b>-1,940</b>	<b>3,418</b>

### Size Class Employment Composition 3rd Quarter 2010

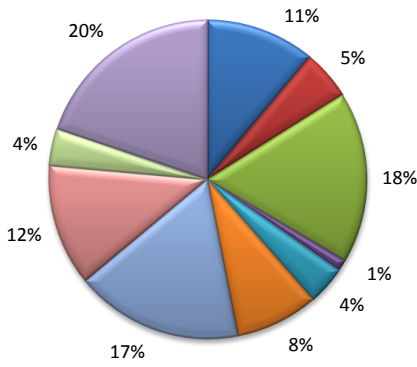


\*Counties in WDA: Aransas, Bee, Brooks, Duval, Jim Wells, Kenedy, Kleberg, Live Oak, McMullen, Nueces, Refugio, & San Patricio

Available at <http://www.tracer2.com/>

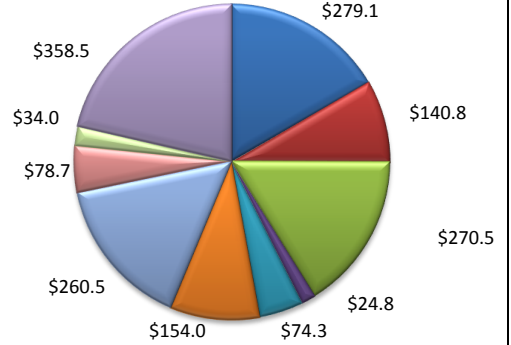
(Aransas, Nueces, San Patricio)

Industry Composition



- Mining, Logging, and Construction
- Manufacturing
- Trade, Transportation, and Utilities
- Information
- Financial Activities
- Professional and Business Services
- Education and Health Services
- Leisure and Hospitality
- Other Services
- Government

Wages by Industry (in millions)  
3rd Quarter 2010



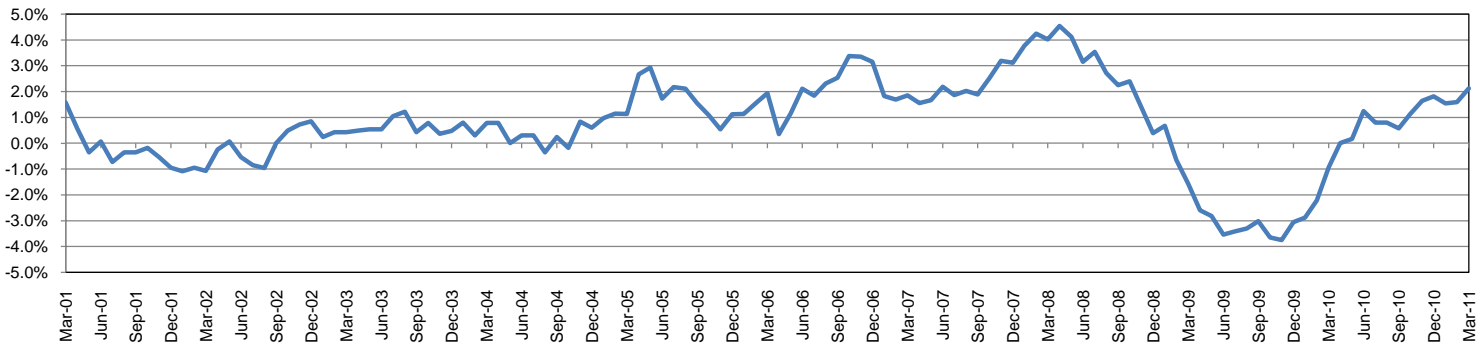
Employment by Industry

				Monthly Change		Annual Change	
	Mar-11	Feb-11	Mar-10	Actual	%	Actual	%
<b>Total Nonfarm</b>	<b>182,900</b>	<b>179,200</b>	<b>179,100</b>	<b>3,700</b>	<b>2.1%</b>	<b>3,800</b>	<b>2.1%</b>
Mining, Logging, and Construction	20,200	19,900	20,600	300	1.5%	-400	-1.9%
Manufacturing	9,200	9,200	9,400	0	0.0%	-200	-2.1%
Trade, Transportation, and Utilities	31,800	31,000	30,800	800	2.6%	1,000	3.3%
Information	2,100	2,100	2,200	0	0.0%	-100	-4.6%
Financial Activities	7,200	7,200	7,400	0	0.0%	-200	-2.7%
Professional and Business Services	15,300	15,100	15,300	200	1.3%	0	0.0%
Education and Health Services	31,300	31,200	30,600	100	0.3%	700	2.3%
Leisure and Hospitality	22,600	20,500	20,900	2,100	10.2%	1,700	8.1%
Other Services	6,900	6,800	6,900	100	1.5%	0	0.0%
Government	36,300	36,200	35,000	100	0.3%	1,300	3.7%

Industry Size Class

				September 2010	
Size Class	Employees per firm	Number of Firms	Employment in Size Class	% Total Employment	
9	1000+	21	45,998	26.3%	
8	500-999	18	12,445	7.1%	
7	250-499	44	14,977	8.6%	
6	100-249	179	27,253	15.6%	
5	50-99	289	20,411	11.7%	
4	20-49	750	22,861	13.1%	
3	10-19	991	13,524	7.7%	
2	5-9	1,524	10,061	5.7%	
1	1-4	3,625	7,492	4.3%	
0	0	574	0	0.0%	
<b>Total</b>		<b>8,015</b>	<b>175,022</b>	<b>100.0%</b>	

Annual Growth Rate for Total Nonagricultural Employment



Unemployment Information

(all estimates in thousands)

	Corpus Christi MSA				Texas (Actual)				United States (Actual)			
	C.L.F.	Emp.	Unemp.	Rate	C.L.F.	Emp.	Unemp.	Rate	C.L.F.	Emp.	Unemp.	Rate
Mar-11	216.9	199.7	17.2	7.9	12,216.1	11,231.7	984.4	8.1	153,022.0	138,962.0	14,060.0	9.2
Feb-11	213.3	195.8	17.5	8.2	12,152.4	11,160.3	992.1	8.2	152,635.0	138,093.0	14,542.0	9.5
Mar-10	212.9	196.3	16.6	7.8	12,074.6	11,076.7	997.9	8.3	153,660.0	137,983.0	15,678.0	10.2

Historical Unemployment Rates

