

Coastal Bend Workforce Area

Area	Area Type	Latest Monthly Data September 2011						Previous Monthly Data August 2011				Year Ago September 2011			
		Labor Force	Employment	Unemployment	Rate	M+-	Y+-	Labor Force	Employment	Unemployment	Rate	Labor Force	Employment	Unemployment	Rate
United States	Nation	154,022,000	140,502,000	13,520,000	8.8	-0.3	-0.4	154,344,000	140,335,000	14,008,000	9.1	153,854,000	139,715,000	14,140,000	9.2
Texas	State	12,371,895	11,330,273	1,041,622	8.4	0	0.4	12,316,888	11,276,289	1,040,599	8.4	12,183,356	11,205,967	977,389	8
Corpus Christi	MSA	217,629	200,038	17,591	8.1	-0.1	0.1	216,247	198,595	17,652	8.2	211,853	194,939	16,914	8
Coastal Bend	WDA	288,973	265,788	23,185	8	-0.1	0	287,082	263,691	23,391	8.1	281,672	259,137	22,535	8
Aransas	County	12,122	11,156	966	8	0.3	-0.1	12,000	11,076	924	7.7	11,836	10,872	964	8.1
Bee	County	12,681	11,492	1,189	9.4	-0.1	0.4	12,577	11,385	1,192	9.5	12,432	11,310	1,122	9
Brooks	County	3,257	2,936	321	9.9	-0.8	0.1	3,265	2,916	349	10.7	3,273	2,951	322	9.8
Duval	County	5,456	4,939	517	9.5	0	-1.1	5,448	4,929	519	9.5	5,325	4,758	567	10.6
Jim Wells	County	21,840	20,195	1,645	7.5	-0.2	-0.8	21,759	20,073	1,686	7.7	21,220	19,453	1,767	8.3
Kenedy	County	246	226	20	8.1	3.4	3.8	234	223	11	4.7	235	225	10	4.3
Kleberg	County	17,467	16,235	1,232	7.1	-0.5	0.2	17,312	16,002	1,310	7.6	17,378	16,179	1,199	6.9
Live Oak	County	5,618	5,254	364	6.5	0	0.3	5,557	5,194	363	6.5	5,321	4,992	329	6.2
McMullen	County	461	433	28	6.1	-0.6	0	420	392	28	6.7	378	355	23	6.1
Nueces	County	173,598	159,887	13,711	7.9	-0.1	0.3	172,505	158,733	13,772	8	168,715	155,811	12,904	7.6
Refugio	County	4,319	4,040	279	6.5	-0.1	-0.1	4,263	3,982	281	6.6	4,257	3,975	282	6.6
San Patricio	County	31,908	28,995	2,913	9.1	-0.2	-0.6	31,742	28,786	2,956	9.3	31,302	28,256	3,046	9.7

(M+-) Change in unemployment rate from last month (Increase) (Decrease)

(Y+-) Change in unemployment rate from last year (Increase) (Decrease)

- Earnings for all occupations Coastal Bend, expressed as hourly rate (TWC):

Coastal Bend	All Occupations-	Average \$17.28/hr.	Entry level \$8.30/hr.	Experienced workers \$21.77/hr.	Top 10% \$31.60/hr.
Texas	All Occupations-	Average \$20.30/hr.	Entry level \$9.62/hr.	Experienced workers \$ 25.68/hr.	Top 10% \$37.83/hr.

- Educational Attainment for population 25 years of age and older - Corpus Christi (Census American Fact Finder/American Community Survey):

Less than 9 th grade	9.3%	12 th grade & GED	26.7%	Associates degree	7.4%	Graduate or Professional degrees	7.0%
9 th thru 11 th grade	11.8%	Some College	24.7%	Bachelors degree	13.0%		

- Median earnings Corpus Christi by education for persons 25 years of age & up (Census AFF/ACS): \$27,211 (\$36,380 male/ \$22,328 female)

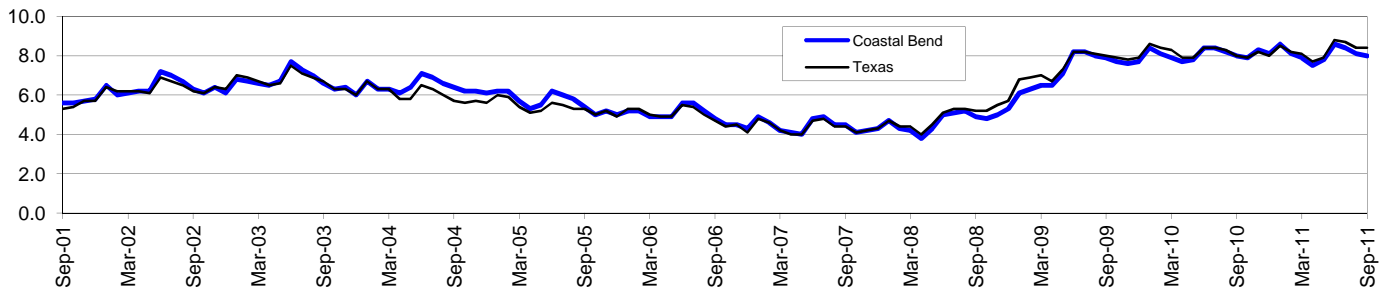
Less than High School	\$15,545	Some College or Associates	\$31,460	Graduate or Professional	\$54,717
High School & GED	\$23,028	Bachelor's	\$43,005		

Coastal Bend Workforce Development Area*

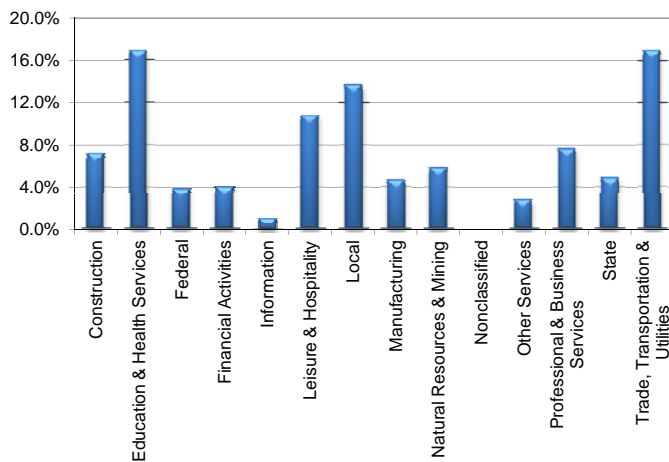
September 2011

Coastal Bend WDA					Texas				
	CLF	Employed	Unemployed	Rate		CLF	Employed	Unemployed	Rate
Sep-11	288,973	265,788	23,185	8.0	Sep-11	12,371,895	11,330,273	1,041,622	8.4
Aug-11	287,082	263,691	23,391	8.1	Aug-11	12,316,888	11,276,289	1,040,599	8.4
Sep-10	281,672	259,137	22,535	8.0	Sep-10	12,183,356	11,205,967	977,389	8.0

Historical Unemployment Rates



Coastal Bend WDA Industry Composition 1st Quarter 2011



Total WDA Claims

	Sep-11	Aug-11	Sep-10	OTY
Initial	1,582	1,770	2,155	-573
Continued	5,863	8,273	8,642	-2,779
Continued Claims for the Week of the 12th				
Continued	2,683	3,120	3,676	-993

Texas Unemployment Insurance Claims Filed

	Sep-11	Aug-11	Sep-10	OTY
Initial	78,034	89,848	83,025	-4,991
Continued	747,606	885,556	859,823	-112,217
Continued Claims for the Week of the 12th				
Continued	183,571	190,177	207,868	-24,297

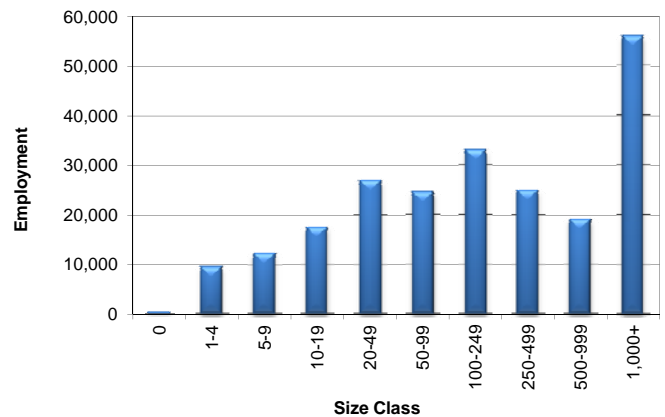
Coastal Bend WDA Average Weekly Wage

	Coastal Bend	WDA Qtr. Chg.	Texas
1st Quarter 2011	\$735.04	-\$70.21	\$945.99
4th Quarter 2010	\$805.25	WDA OTY Chg.	\$976.16
1st Quarter 2010	\$685.13	\$49.91	\$891.80

NAICS Covered Employment Quarterly Data 1st Quarter 2011

SUPER SECTOR	Employment	Change	
		Quarter	Year
Construction	16,116	-326	-1,051
Education & Health Services	37,822	-20	681
Federal	8,519	-74	31
Financial Activities	8,978	61	-52
Information	2,273	-59	-187
Leisure & Hospitality	24,338	30	6
Local	30,558	-256	-130
Manufacturing	10,402	-78	88
Natural Resources & Mining	13,058	788	2,731
Nonclassified	35	19	15
Other Services	6,235	-12	72
Professional & Business Services	16,984	-263	46
State	10,742	126	411
Trade, Transportation & Utilities	38,117	-1,428	-50
TOTAL	224,177	-1,492	2,611

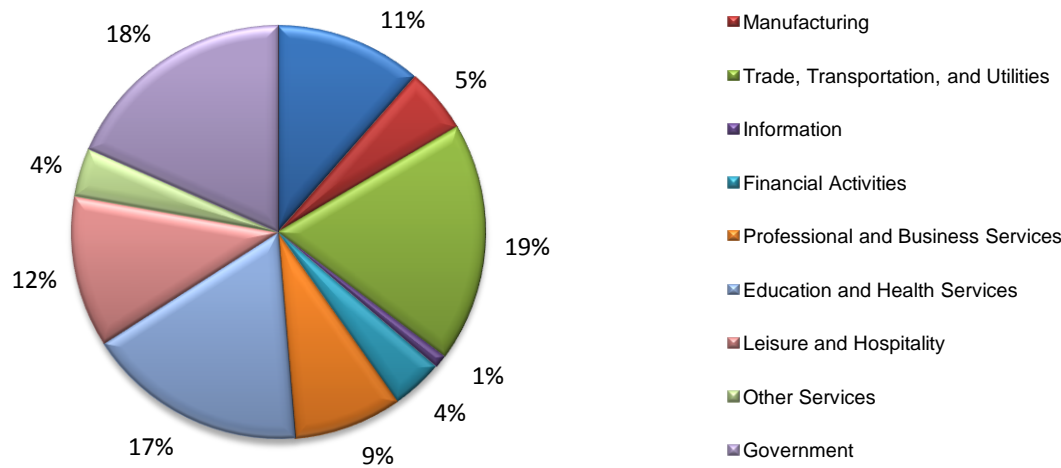
Size Class Employment Composition 1st Quarter 2011



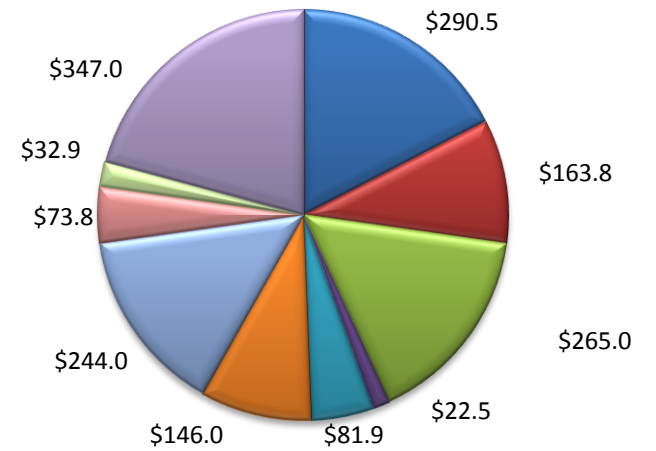
*Counties in WDA: Aransas, Bee, Brooks, Duval, Jim Wells, Kenedy, Kleberg, Live Oak, McMullen, Nueces, Refugio, & San Patricio

(Aransas, Nueces, San Patricio)

Industry Composition



Wages by Industry (in millions)
1st Quarter 2011



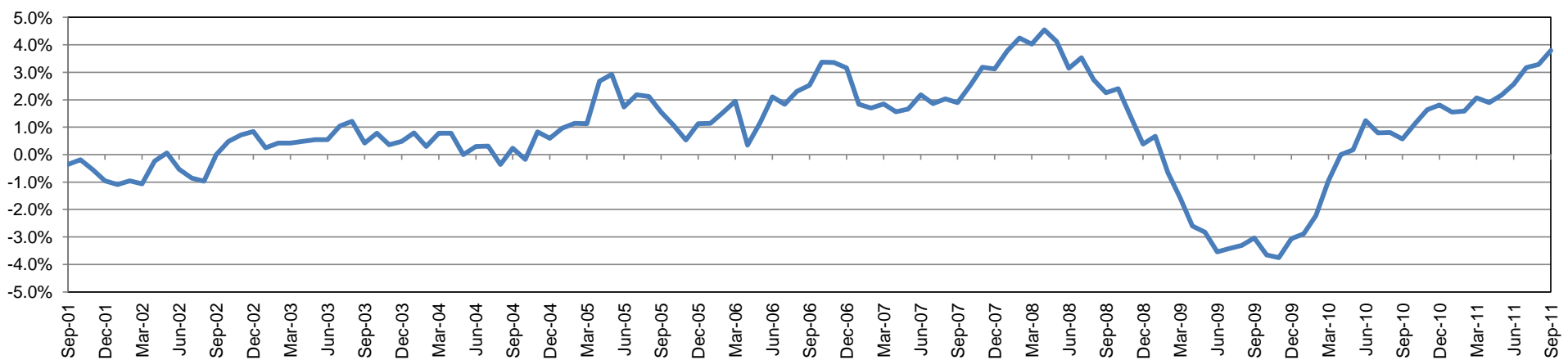
Employment by Industry

	Sep-11	Aug-11	Sep-10	Monthly Change		Annual Change	
				Actual	%	Actual	%
Total Nonfarm	183,700	182,300	177,000	1,400	0.8%	6,700	3.8%
Mining, Logging, and Construction	21,000	21,000	19,600	0	0.0%	1,400	7.1%
Manufacturing	9,400	9,500	9,200	-100	-1.1%	200	2.2%
Trade, Transportation, and Utilities	34,200	33,400	31,100	800	2.4%	3,100	10.0%
Information	1,900	2,000	2,100	-100	-5.0%	-200	-9.5%
Financial Activities	7,400	7,400	7,200	0	0.0%	200	2.8%
Professional and Business Services	15,500	15,400	15,100	100	0.7%	400	2.7%
Education and Health Services	31,700	31,600	30,900	100	0.3%	800	2.6%
Leisure and Hospitality	21,800	22,200	20,800	-400	-1.8%	1,000	4.8%
Other Services	7,000	7,000	6,800	0	0.0%	200	2.9%
Government	33,800	32,800	34,200	1,000	3.1%	-400	-1.2%

Industry Size Class March 2011

Size Class	Employees per firm	Number of Firms	Employment in Size Class	% Total Employment
9	1000+	20	45,282	25.9%
8	500-999	23	15,232	8.7%
7	250-499	46	14,867	8.5%
6	100-249	177	26,242	15.0%
5	50-99	291	20,159	11.5%
4	20-49	708	21,680	12.4%
3	10-19	1,039	14,198	8.1%
2	5-9	1,502	9,969	5.7%
1	1-4	3,568	7,402	4.2%
0	0	618	0	0.0%
Total		7,992	175,031	100.0%

Annual Growth Rate for Total Nonagricultural Employment



Unemployment Information (all estimates in thousands)

	Corpus Christi MSA				Texas (Actual)				United States (Actual)			
	C.L.F.	Emp.	Unemp.	Rate	C.L.F.	Emp.	Unemp.	Rate	C.L.F.	Emp.	Unemp.	Rate
Sep-11	217.6	200.0	17.6	8.1	12,371.9	11,330.3	1,041.6	8.4	154,022.0	140,502.0	13,520.0	8.8
Aug-11	216.3	198.6	17.7	8.2	12,316.9	11,276.3	1,040.6	8.4	154,344.0	140,335.0	14,008.0	9.1
Sep-10	211.8	194.9	16.9	8.0	12,183.4	11,206.0	977.4	8.0	153,854.0	139,715.0	14,140.0	9.2

Historical Unemployment Rates

