

Coastal Bend Workforce Area

(Not Seasonally Adjusted Unemployment Rates by WDA, MSA, & County)

Area	Area Type	Latest Monthly Data July 2014						Previous Monthly Data June 2014				Year Ago July 2013			
		Labor Force	Employment	Unemployment	Rate	M+-	Y+-	Labor Force	Employment	Unemployment	Rate	Labor Force	Employment	Unemployment	Rate
United States	Nation	157,573,000	147,265,000	10,307,000	6.5	0.2	-1.2	156,997,000	147,104,000	9,893,000	6.3	157,196,000	145,113,000	12,083,000	7.7
Texas	State	13,079,602	12,349,672	729,930	5.6	0.1	-1.1	13,031,947	12,321,206	710,741	5.5	12,905,019	12,039,214	865,805	6.7
Corpus Christi	MSA	220,845	208,855	11,990	5.4	0.1	-1.1	221,782	210,102	11,680	5.3	219,338	205,189	14,149	6.5
Coastal Bend	WDA	300,343	284,320	16,023	5.3	0.1	-1.0	301,657	286,037	15,620	5.2	298,475	279,605	18,870	6.3
Aransas	County	11,214	10,611	603	5.4	0.3	-0.9	11,249	10,675	574	5.1	11,123	10,425	698	6.3
Bee	County	13,613	12,771	842	6.2	0.2	-0.7	13,495	12,680	815	6.0	13,869	12,908	961	6.9
Brooks	County	3,425	3,167	258	7.5	0.5	-1.0	3,536	3,290	246	7.0	3,516	3,217	299	8.5
Duval	County	6,107	5,766	341	5.6	0.1	-1.1	6,169	5,827	342	5.5	6,106	5,694	412	6.7
Jim Wells	County	24,736	23,546	1,190	4.8	0.1	-0.8	24,896	23,734	1,162	4.7	24,789	23,407	1,382	5.6
Kenedy	County	278	270	8	2.9	-0.3	-0.5	278	269	9	3.2	268	259	9	3.4
Kleberg	County	18,340	17,397	943	5.1	0.0	-1.2	18,251	17,320	931	5.1	17,751	16,638	1,113	6.3
Live Oak	County	7,241	6,982	259	3.6	0.3	-0.7	7,482	7,234	248	3.3	7,270	6,959	311	4.3
McMullen	County	932	914	18	1.9	0.1	-1.1	981	963	18	1.8	809	785	24	3.0
Nueces	County	179,957	170,603	9,354	5.2	0.2	-1.0	180,694	171,622	9,072	5.0	178,673	167,609	11,064	6.2
Refugio	County	4,826	4,652	174	3.6	0.1	-0.8	4,786	4,617	169	3.5	4,759	4,549	210	4.4
San Patricio	County	29,674	27,641	2,033	6.9	0.1	-1.2	29,840	27,806	2,034	6.8	29,542	27,155	2,387	8.1

(M+-) Change in unemployment rate from last month (Increase) (Decrease)

(Y+-) Change in unemployment rate from last year (Increase) (Decrease)

- Earnings for all occupations Coastal Bend, expressed as hourly rate (TWC):

Coastal Bend	All Occupations-	Average \$18.35/hr.	Entry level \$8.58/hr.	Experienced workers \$23.24/hr.	Top 10% \$33.56/hr.
Texas	All Occupations-	Average \$20.97/hr.	Entry level \$8.88/hr.	Experienced workers \$ 27.02/hr.	Top 10% \$39.64/hr.

- Educational Attainment for population 25 years of age and older - Corpus Christi (Census American Fact Finder/American Community Survey):

Less than 9 th grade	8.7%	12 th grade & GED	27.7%	Associates degree	7.0%	Graduate or Professional degrees	8.4%
9 th thru 11 th grade	9.3%	Some College	25.1%	Bachelors degree	13.8%		

- Median earnings Corpus Christi by education for persons 25 years of age & up (Census AFF/ACS): **\$27,211** (\$36,380 male/ \$22,328 female)

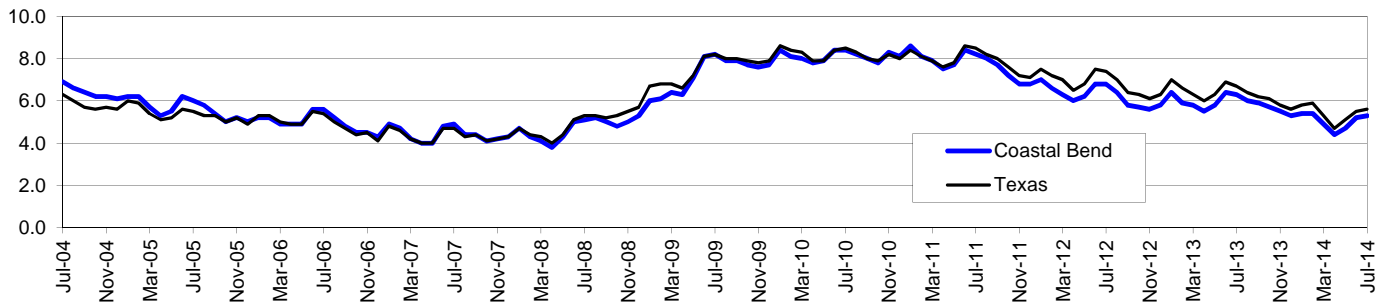
Less than High School	\$15,437	Some College or Associates	\$28,739	Graduate or Professional	\$56,681
High School & GED	\$26,818	Bachelor's	\$44,078		

Coastal Bend Workforce Development Area*

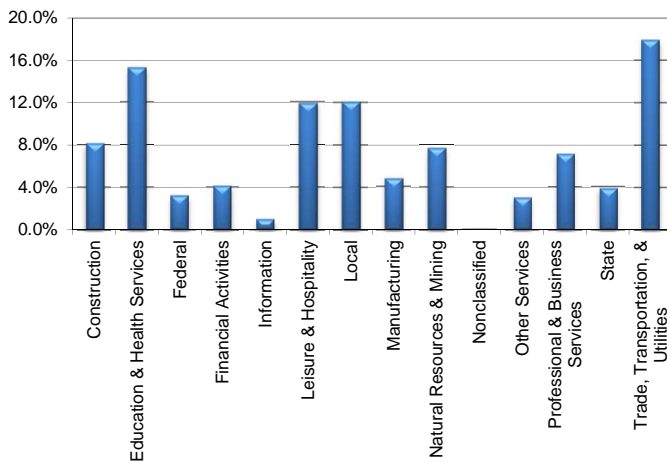
July 2014

Coastal Bend WDA					Texas				
	CLF	Employed	Unemployed	Rate		CLF	Employed	Unemployed	Rate
Jul-14	300,343	284,320	16,023	5.3	Jul-14	13,079,602	12,349,672	729,930	5.6
Jun-14	301,657	286,037	15,620	5.2	Jun-14	13,031,947	12,321,206	710,741	5.5
Jul-13	298,475	279,605	18,870	6.3	Jul-13	12,905,019	12,039,214	865,805	6.7

Historical Unemployment Rates



Coastal Bend WDA Industry Composition 1st Quarter 2014



Total WDA Claims

Continued Claims for the Week of the 12th

	Jul-14	Jun-14	Jul-13	OTY
Continued	2,781	2,790	3,101	-320

Texas Unemployment Insurance Claims

Continued Claims for the Week of the 12th

	Jul-14	Jun-14	Jul-13	OTY
Continued	128,374	126,581	140,675	-12,301

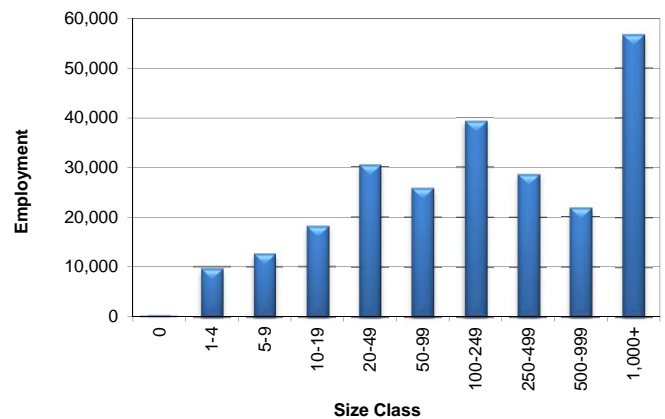
Coastal Bend WDA Average Weekly Wage

	Coastal Bend	Texas
1st Quarter 2014	\$855.76	\$1,062.65
4th Quarter 2013	\$860.03	\$1,026.57
1st Quarter 2013	\$820.96	\$1,015.27
Quarter Change	-\$4.27	\$36.08
OTY Change	\$34.80	\$47.38

NAICS Covered Employment Quarterly Data 1st Quarter 2014

SUPER SECTOR	Employment	Change	
		Quarter	Year
Construction	19,785	169	1,731
Education & Health Services	37,068	-999	-1,121
Federal	7,768	-235	-401
Financial Activities	10,099	13	265
Information	2,351	-45	19
Leisure & Hospitality	28,897	-102	466
Local	29,375	-73	308
Manufacturing	11,573	24	137
Natural Resources & Mining	18,671	-186	157
Nonclassified	37	-5	-6
Other Services	7,312	46	272
Professional & Business Services	17,300	-270	-361
State	9,403	-52	-162
Trade, Transportation, & Utilities	43,601	-209	1,891
TOTAL	243,240	-1,924	3,195

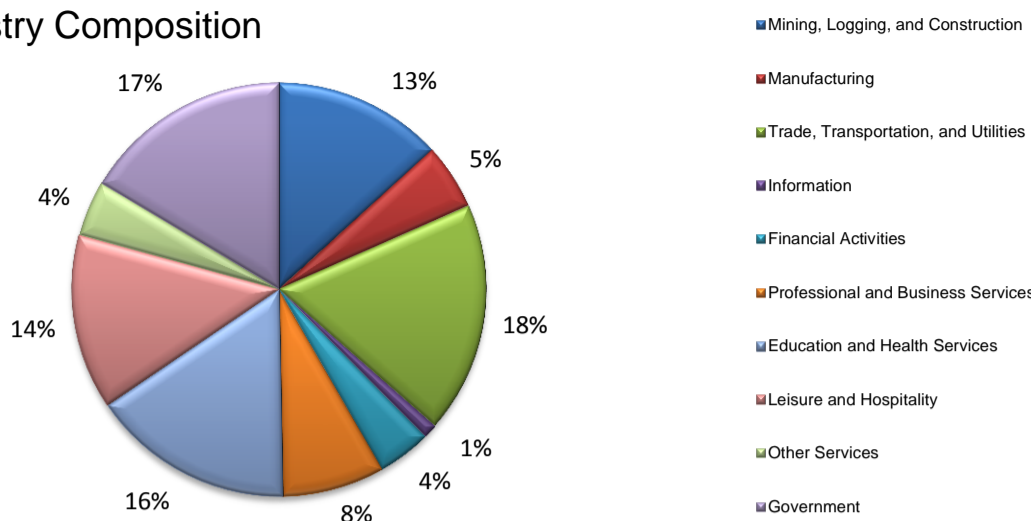
Size Class Employment Composition 1st Quarter 2014



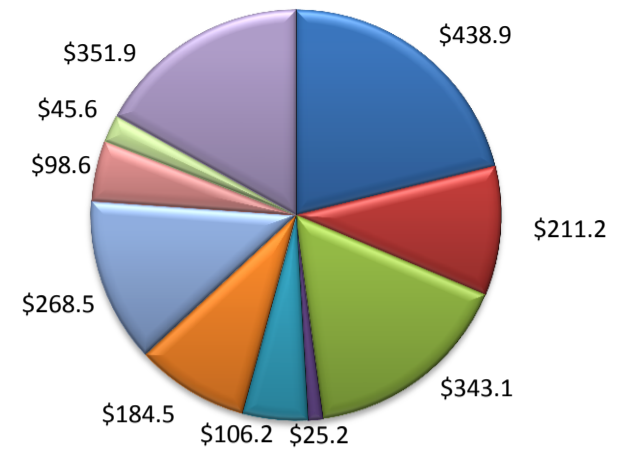
*Counties in WDA: Aransas, Bee, Brooks, Duval, Jim Wells, Kenedy, Kleberg, Live Oak, McMullen, Nueces, Refugio, & San Patricio

(Aransas, Nueces, San Patricio)

Industry Composition



Wages by Industry (in millions)
1st Quarter 2014



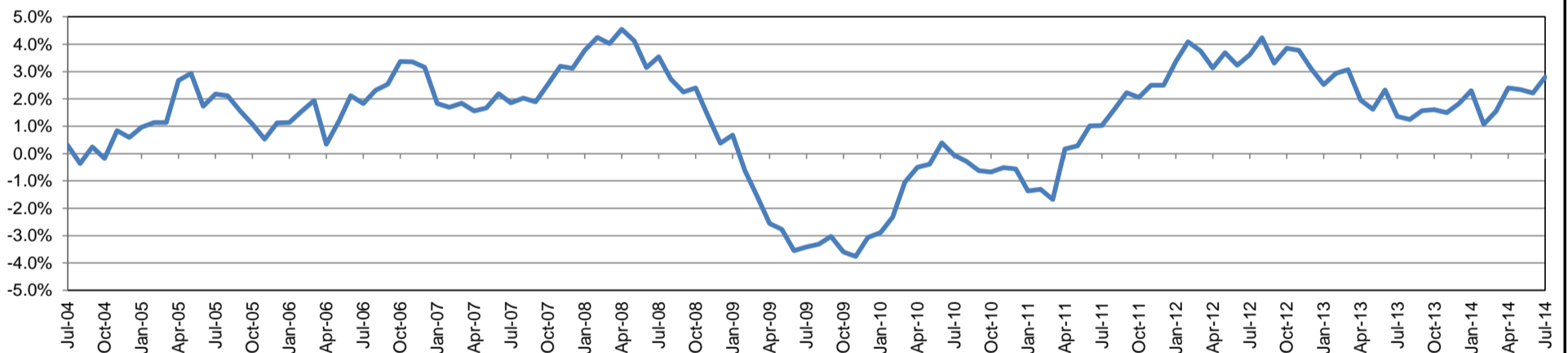
Employment by Industry

	Jul-14	Jun-14	Jul-13	Monthly Change		Annual Change	
				Actual	%	Actual	%
Total Nonfarm	191,100	193,800	185,900	-2,700	-1.4%	5,200	2.8%
Mining, Logging, and Construction	25,300	25,100	23,300	200	0.8%	2,000	8.6%
Manufacturing	9,800	9,800	9,800	0	0.0%	0	0.0%
Trade, Transportation, and Utilities	34,600	35,100	33,900	-500	-1.4%	700	2.1%
Information	2,100	2,100	2,100	0	0.0%	0	0.0%
Financial Activities	8,000	8,100	7,800	-100	-1.2%	200	2.6%
Professional and Business Services	15,200	15,400	15,600	-200	-1.3%	-400	-2.6%
Education and Health Services	30,200	30,300	29,500	-100	-0.3%	700	2.4%
Leisure and Hospitality	26,200	26,700	24,800	-500	-1.9%	1,400	5.7%
Other Services	8,300	8,200	7,800	100	1.2%	500	6.4%
Government	31,400	33,000	31,300	-1,600	-4.9%	100	0.3%

Industry Size Class

Size Class	Employees per firm	Number of Firms	March 2014		
			Employment in Size Class	% Total Employment	
9	1000+	20	43,256	23.1%	
8	500-999	25	16,476	8.8%	
7	250-499	53	18,163	9.7%	
6	100-249	215	32,105	17.1%	
5	50-99	309	21,502	11.5%	
4	20-49	799	24,093	12.9%	
3	10-19	1,059	14,392	7.7%	
2	5-9	1,528	10,103	5.4%	
1	1-4	3,589	7,404	3.9%	
0	0	571	0	0.0%	
Total			8,168	187,494	100.0%

Annual Growth Rate for Total Nonagricultural Employment



Unemployment Information (all estimates in thousands)

	Corpus Christi MSA				Texas (Actual)				United States (Actual)			
	C.L.F.	Emp.	Unemp.	Rate	C.L.F.	Emp.	Unemp.	Rate	C.L.F.	Emp.	Unemp.	Rate
Jul-14	220.9	208.9	12.0	5.4	13,079.6	12,349.7	729.9	5.6	157,573.0	147,265.0	10,307.0	6.5
Jun-14	221.8	210.1	11.7	5.3	13,031.9	12,321.2	710.7	5.5	156,997.0	147,104.0	9,893.0	6.3
Jul-13	219.3	205.2	14.1	6.5	12,905.0	12,039.2	865.8	6.7	157,196.0	145,113.0	12,083.0	7.7

Historical Unemployment Rates

