

# Coastal Bend Workforce Area

Area	Area Type	Latest Monthly Data July 2012						Previous Monthly Data June 2012				Year Ago July 2011			
		Labor Force	Employment	Unemployment	Rate	M+-	Y+-	Labor Force	Employment	Unemployment	Rate	Labor Force	Employment	Unemployment	Rate
United States	Nation	156,526,000	143,126,000	13,400,000	8.6	0.2	-0.7	156,385,000	143,202,000	13,184,000	8.4	154,812,000	140,384,000	14,428,000	9.3
Texas	State	12,729,393	11,768,848	960,545	7.5	-0.1	-1.0	12,723,520	11,758,990	964,530	7.6	12,497,951	11,438,033	1,059,918	8.5
Corpus Christi	MSA	225,313	209,530	15,783	7.0	0.0	-1.3	224,273	208,552	15,721	7.0	217,794	199,641	18,153	8.3
Coastal Bend	WDA	302,376	281,573	20,803	6.9	0.0	-1.3	301,571	280,819	20,752	6.9	291,613	267,692	23,921	8.2
Aransas	County	11,297	10,567	730	6.5	0.1	-1.6	11,242	10,518	724	6.4	10,960	10,069	891	8.1
Bee	County	12,890	11,857	1,033	8.0	0.0	-1.2	12,947	11,909	1,038	8.0	12,559	11,400	1,159	9.2
Brooks	County	3,335	3,041	294	8.8	0.2	-1.9	3,380	3,090	290	8.6	3,333	2,976	357	10.7
Duval	County	5,721	5,276	445	7.8	-0.1	-1.6	5,755	5,302	453	7.9	5,621	5,095	526	9.4
Jim Wells	County	25,025	23,585	1,440	5.8	0.0	-1.4	24,783	23,339	1,444	5.8	23,496	21,805	1,691	7.2
Kenedy	County	263	253	10	3.8	0.0	-2.5	265	255	10	3.8	256	240	16	6.3
Kleberg	County	18,095	16,893	1,202	6.6	0.0	-1.1	18,274	17,065	1,209	6.6	17,353	16,014	1,339	7.7
Live Oak	County	6,508	6,173	335	5.1	0.2	-1.0	6,711	6,380	331	4.9	6,320	5,937	383	6.1
McMullen	County	659	639	20	3.0	-0.1	-1.0	667	646	21	3.1	548	526	22	4.0
Nueces	County	183,571	170,994	12,577	6.9	0.0	-1.2	182,736	170,196	12,540	6.9	177,267	162,924	14,343	8.1
Refugio	County	4,569	4,327	242	5.3	0.1	-1.0	4,516	4,281	235	5.2	4,333	4,058	275	6.3
San Patricio	County	30,443	27,968	2,475	8.1	0.0	-1.8	30,295	27,838	2,457	8.1	29,567	26,648	2,919	9.9

(M+-) Change in unemployment rate from last month (Increase) (Decrease)

(Y+-) Change in unemployment rate from last year (Increase) (Decrease)

- Earnings for all occupations Coastal Bend, expressed as hourly rate (TWC):

Coastal Bend	All Occupations-	Average \$17.28/hr.	Entry level \$8.30/hr.	Experienced workers \$21.77/hr.	Top 10% \$31.60/hr.
Texas	All Occupations-	Average \$20.30/hr.	Entry level \$9.62/hr.	Experienced workers \$ 25.68/hr.	Top 10% \$37.83/hr.

- Educational Attainment for population 25 years of age and older - Corpus Christi (Census American Fact Finder/American Community Survey):

Less than 9 <sup>th</sup> grade	9.3%	12 <sup>th</sup> grade & GED	26.7%	Associates degree	7.4%	Graduate or Professional degrees	7.0%
9 <sup>th</sup> thru 11 <sup>th</sup> grade	11.8%	Some College	24.7%	Bachelors degree	13.0%		

- Median earnings Corpus Christi by education for persons 25 years of age & up (Census AFF/ACS): **\$27,211** (\$36,380 male/ \$22,328 female)

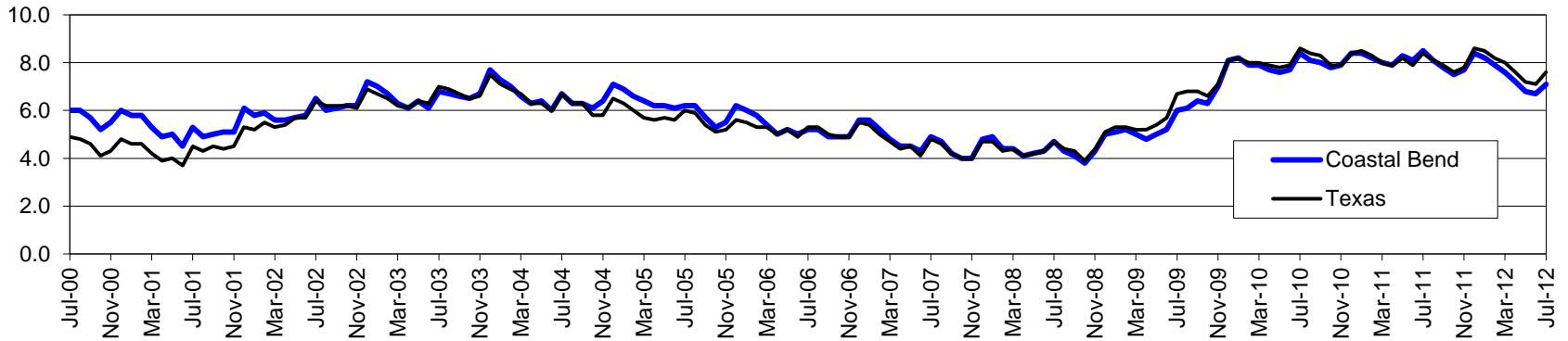
Less than High School	\$15,545	Some College or Associates	\$31,460	Graduate or Professional	\$54,717
High School & GED	\$23,028	Bachelor's	\$43,005		

# Coastal Bend Workforce Development Area\*

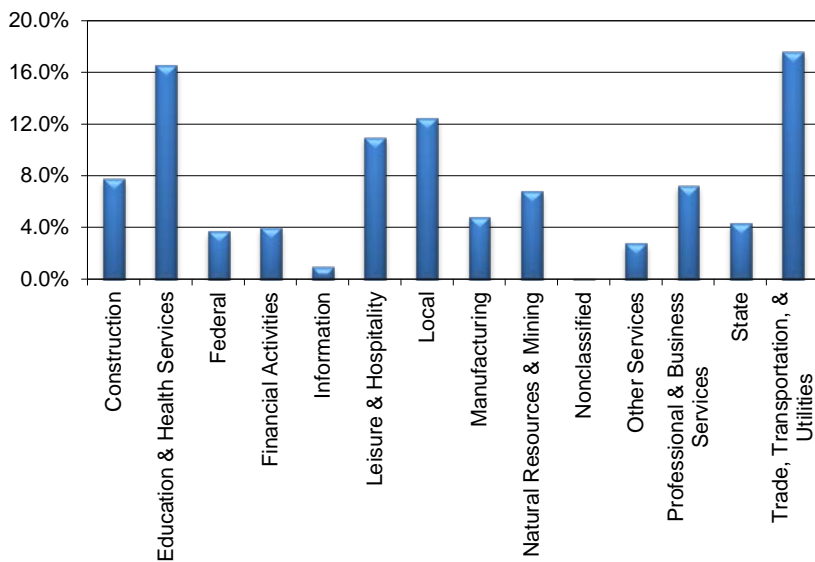
July 2012

Coastal Bend WDA					Texas				
	CLF	Employed	Unemployed	Rate		CLF	Employed	Unemployed	Rate
Jul-12	302,376	281,573	20,803	6.9	Jul-12	12,729,393	11,768,848	960,545	7.5
Jun-12	301,571	280,819	20,752	6.9	Jun-12	12,723,520	11,758,990	964,530	7.6
Jul-11	291,613	267,692	23,921	8.2	Jul-11	12,497,951	11,438,033	1,059,918	8.5

## Historical Unemployment Rates



## Coastal Bend WDA Industry Composition 4th Quarter 2011



## Total WDA Claims

### Continued Claims for the Week of the 12th

	Jul-12	Jun-12	Jul-11	OTY
Continued	2,705	2,515	3,239	-534

### Texas Unemployment Insurance Claims

#### Continued Claims for the Week of the 12th

	Jul-12	Jun-12	Jul-11	OTY
Continued	141,452	138,074	156,006	-14,554

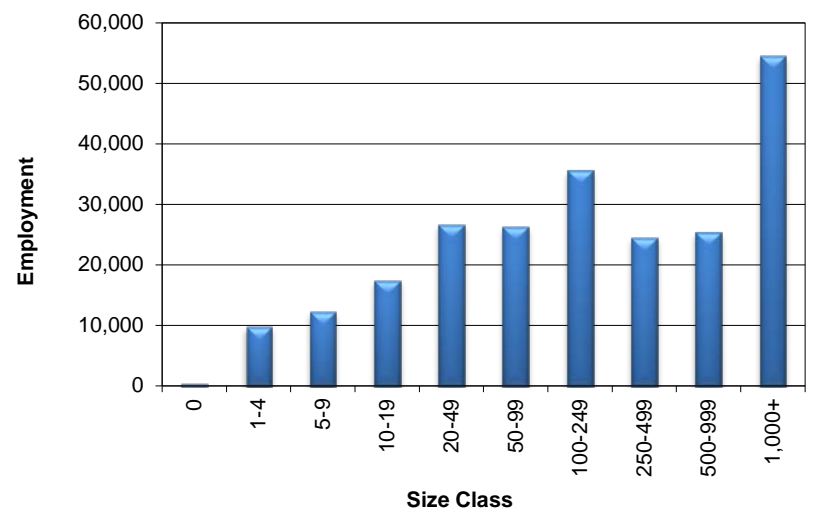
## Coastal Bend WDA Average Weekly Wage

	Coastal Bend	Texas
4th Quarter 2011	\$825.16	\$972.70
3rd Quarter 2011	\$787.02	\$931.66
4th Quarter 2010	\$805.24	\$976.19
Quarter Change	\$38.14	\$41.04
OTY Change	\$19.92	-\$3.49

## NAICS Covered Employment Quarterly Data 4th Quarter 2011

SUPER SECTOR	Employment	Change	
		Quarter	Year
Construction	18,246	1,362	1,799
Education & Health Services	38,657	-150	815
Federal	8,610	-38	17
Financial Activities	9,404	76	487
Information	2,275	-3	-57
Leisure & Hospitality	25,667	-847	1,357
Local	29,030	1,371	-1,784
Manufacturing	11,228	294	748
Natural Resources & Mining	15,812	932	3,541
Nonclassified	45	9	38
Other Services	6,379	-74	132
Professional & Business Services	16,872	78	-375
State	10,020	654	-596
Trade, Transportation, & Utilities	41,172	1,126	1,624
<b>TOTAL</b>	<b>233,417</b>	<b>4,790</b>	<b>7,746</b>

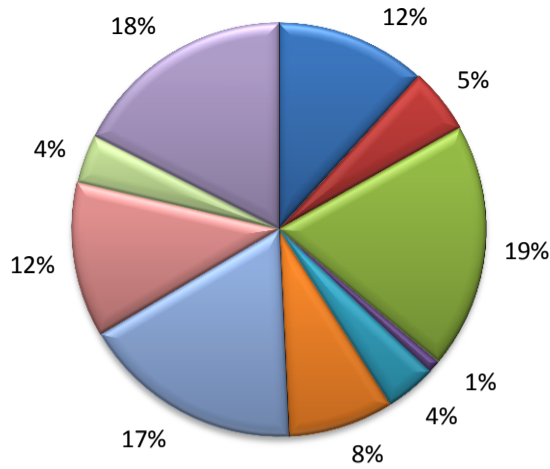
## Size Class Employment Composition 4th Quarter 2011



\*Counties in WDA: Aransas, Bee, Brooks, Duval, Jim Wells, Kenedy, Kleberg, Live Oak, McMullen, Nueces, Refugio, & San Patricio

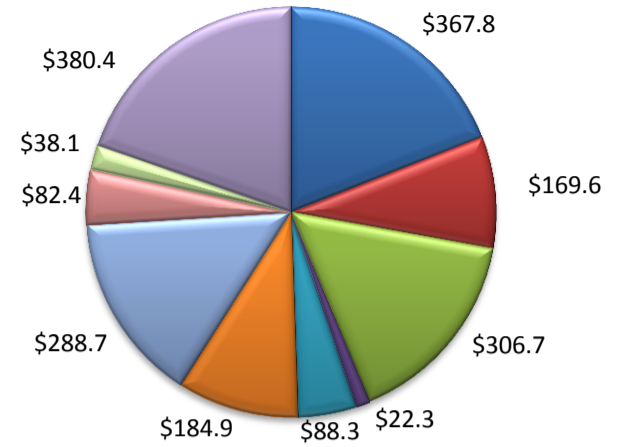
(Aransas, Nueces, San Patricio)

Industry Composition



- Mining, Logging, and Construction
- Manufacturing
- Trade, Transportation, and Utilities
- Information
- Financial Activities
- Professional and Business Services
- Education and Health Services
- Leisure and Hospitality
- Other Services
- Government

Wages by Industry (in millions)  
4th Quarter 2011



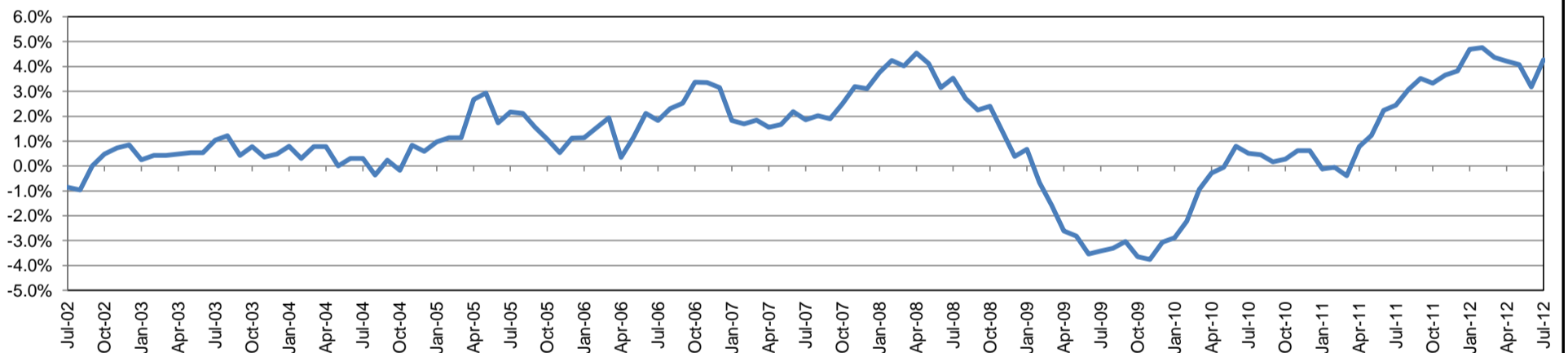
Employment by Industry

	Jul-12	Jun-12	Jul-11	Monthly Change		Annual Change	
				Actual	%	Actual	%
Total Nonfarm	188,200	188,200	180,500	0	0.0%	7,700	4.3%
Mining, Logging, and Construction	22,100	22,100	21,000	0	0.0%	1,100	5.2%
Manufacturing	9,600	9,500	9,500	100	1.1%	100	1.1%
Trade, Transportation, and Utilities	36,100	35,900	32,000	200	0.6%	4,100	12.8%
Information	1,900	1,900	2,000	0	0.0%	-100	-5.0%
Financial Activities	7,500	7,500	7,400	0	0.0%	100	1.4%
Professional and Business Services	15,500	15,400	15,100	100	0.7%	400	2.7%
Education and Health Services	32,500	32,400	31,600	100	0.3%	900	2.9%
Leisure and Hospitality	22,800	23,000	22,100	-200	-0.9%	700	3.2%
Other Services	7,200	7,300	7,100	-100	-1.4%	100	1.4%
Government	33,000	33,200	32,700	-200	-0.6%	300	0.9%

Industry Size Class

Size Class	Employees per firm	Number of Firms	December 2011		
			Employment in Size Class	% Total Employment	
9	1000+	17	41,957	23.5%	
8	500-999	27	18,663	10.4%	
7	250-499	51	16,420	9.2%	
6	100-249	183	27,289	15.3%	
5	50-99	309	21,463	12.0%	
4	20-49	709	21,513	12.0%	
3	10-19	1,028	13,920	7.8%	
2	5-9	1,495	9,854	5.5%	
1	1-4	3,688	7,576	4.2%	
0	0	497	0	0.0%	
Total			8,004	178,655	100.0%

Annual Growth Rate for Total Nonagricultural Employment



Unemployment Information (all estimates in thousands)

	Corpus Christi MSA				Texas (Actual)				United States (Actual)			
	C.L.F.	Emp.	Unemp.	Rate	C.L.F.	Emp.	Unemp.	Rate	C.L.F.	Emp.	Unemp.	Rate
Jul-12	225.3	209.5	15.8	7.0	12,729.3	11,768.8	960.5	7.5	156,526.0	143,126.0	13,400.0	8.6
Jun-12	224.3	208.6	15.7	7.0	12,723.5	11,759.0	964.5	7.6	156,385.0	143,202.0	13,184.0	8.4
Jul-11	217.8	199.6	18.2	8.3	12,497.9	11,438.0	1,059.9	8.5	154,812.0	140,384.0	14,428.0	9.3

Historical Unemployment Rates

