

Coastal Bend Workforce Area

Area	Area Type	Latest Monthly Data January 2013						Previous Monthly Data December 2012				Year Ago January 2012			
		Labor Force	Employment	Unemployment	Rate	M+-	Y+-	Labor Force	Employment	Unemployment	Rate	Labor Force	Employment	Unemployment	Rate
United States	Nation	154,794,000	141,614,000	13,181,000	8.5	0.9	-0.3	154,904,000	143,060,000	11,844,000	7.6	153,485,000	139,944,000	13,541,000	8.8
Texas	State	12,655,394	11,782,758	872,636	6.9	0.9	-0.6	12,634,533	11,870,344	764,189	6.0	12,486,708	11,552,047	934,661	7.5
Corpus Christi	MSA	216,810	202,794	14,016	6.5	0.8	-0.8	216,512	204,241	12,271	5.7	214,093	198,360	15,733	7.3
Coastal Bend	WDA	295,731	277,213	18,518	6.3	0.8	-0.8	294,651	278,426	16,225	5.5	290,490	269,964	20,526	7.1
Aransas	County	10,985	10,244	741	6.7	1.0	-0.7	10,936	10,318	618	5.7	10,822	10,020	802	7.4
Bee	County	13,043	12,087	956	7.3	0.7	-0.4	12,790	11,946	844	6.6	12,808	11,825	983	7.7
Brooks	County	3,380	3,135	245	7.2	0.6	-0.5	3,345	3,124	221	6.6	3,382	3,122	260	7.7
Duval	County	5,965	5,581	384	6.4	0.4	-1.1	5,943	5,586	357	6.0	5,698	5,268	430	7.5
Jim Wells	County	26,071	24,784	1,287	4.9	0.5	-0.7	25,869	24,737	1,132	4.4	24,801	23,419	1,382	5.6
Kenedy	County	266	258	8	3.0	-0.7	-0.4	271	261	10	3.7	268	259	9	3.4
Kleberg	County	17,609	16,531	1,078	6.1	0.9	-0.5	17,610	16,689	921	5.2	17,779	16,602	1,177	6.6
Live Oak	County	7,311	7,003	308	4.2	0.5	-0.4	7,077	6,813	264	3.7	6,588	6,283	305	4.6
McMullen	County	698	677	21	3.0	0.9	-0.1	675	661	14	2.1	622	603	19	3.1
Nueces	County	176,656	165,718	10,938	6.2	0.8	-0.9	176,474	166,900	9,574	5.4	174,501	162,094	12,407	7.1
Refugio	County	4,578	4,363	215	4.7	0.5	-0.4	4,560	4,368	192	4.2	4,453	4,224	229	5.1
San Patricio	County	29,169	26,832	2,337	8.0	0.9	-0.8	29,101	27,023	2,078	7.1	28,768	26,245	2,523	8.8

(M+-) Change in unemployment rate from last month (Increase) (Decrease)

(Y+-) Change in unemployment rate from last year (Increase) (Decrease)

- Earnings for all occupations Coastal Bend, expressed as hourly rate (TWC):

Coastal Bend	All Occupations-	Average \$17.28/hr.	Entry level \$8.30/hr.	Experienced workers \$21.77/hr.	Top 10% \$31.60/hr.
Texas	All Occupations-	Average \$20.30/hr.	Entry level \$9.62/hr.	Experienced workers \$ 25.68/hr.	Top 10% \$37.83/hr.

- Educational Attainment for population 25 years of age and older - Corpus Christi (Census American Fact Finder/American Community Survey):

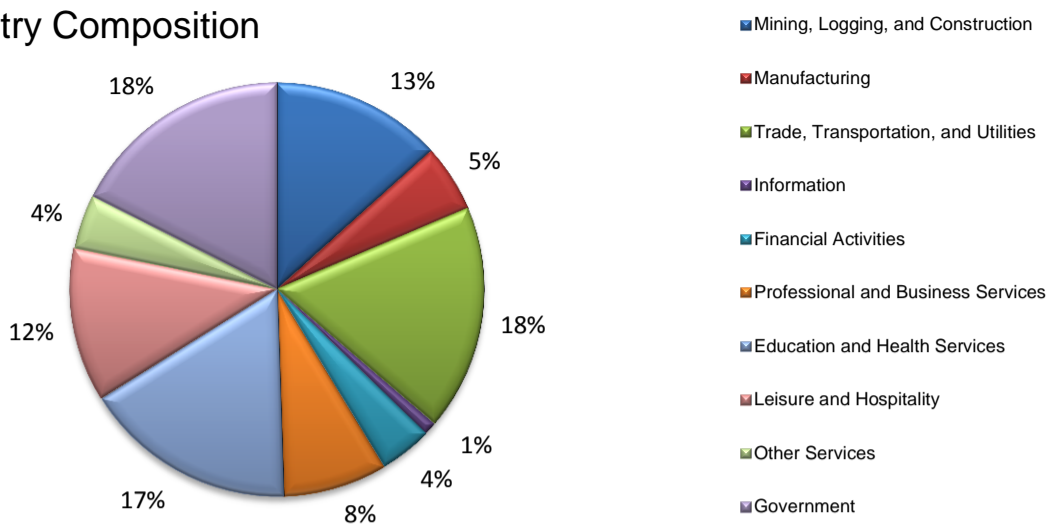
Less than 9 th grade	9.3%	12 th grade & GED	26.7%	Associates degree	7.4%	Graduate or Professional degrees	7.0%
9 th thru 11 th grade	11.8%	Some College	24.7%	Bachelors degree	13.0%		

- Median earnings Corpus Christi by education for persons 25 years of age & up (Census AFF/ACS): \$27,211 (\$36,380 male/ \$22,328 female)

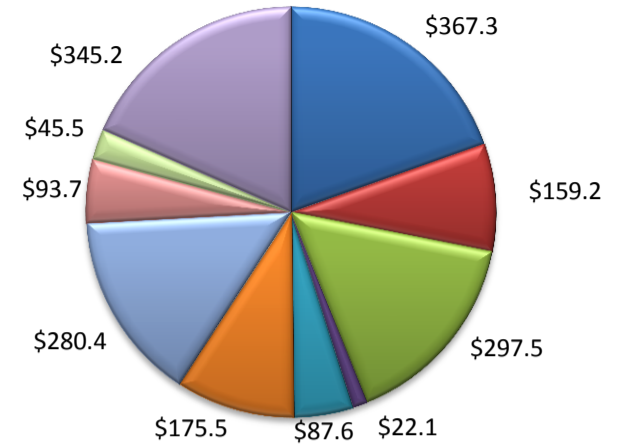
Less than High School	\$15,545	Some College or Associates	\$31,460	Graduate or Professional	\$54,717
High School & GED	\$23,028	Bachelor's	\$43,005		

(Aransas, Nueces, San Patricio)

Industry Composition



Wages by Industry (in millions)
3rd Quarter 2012



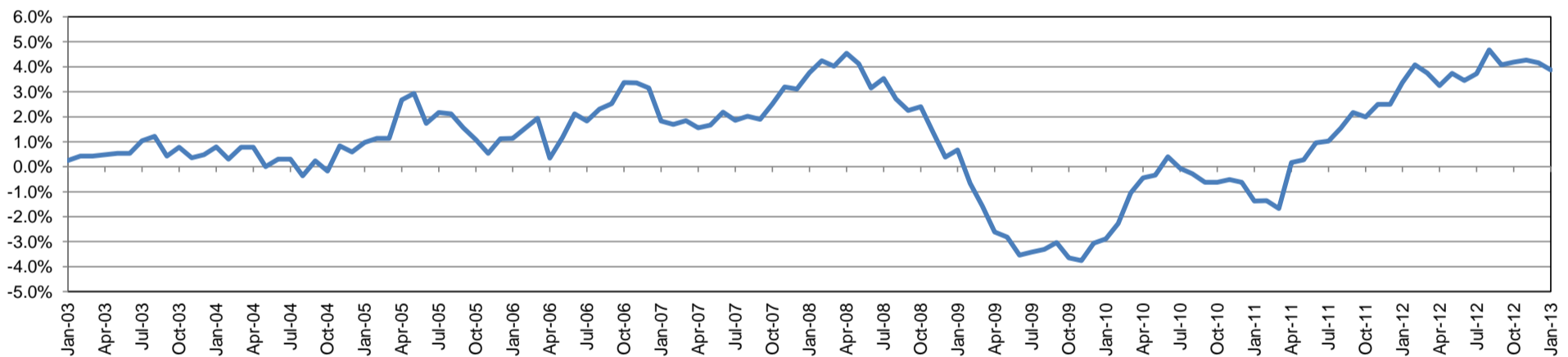
Employment by Industry

	Jan-13	Dec-12	Jan-12	Monthly Change		Annual Change	
				Actual	%	Actual	%
Total Nonfarm	185,100	187,800	178,200	-2,700	-1.4%	6,900	3.9%
Mining, Logging, and Construction	24,600	24,700	21,200	-100	-0.4%	3,400	16.0%
Manufacturing	9,800	9,900	9,700	-100	-1.0%	100	1.0%
Trade, Transportation, and Utilities	32,700	33,300	31,700	-600	-1.8%	1,000	3.2%
Information	1,900	2,000	2,000	-100	-5.0%	-100	-5.0%
Financial Activities	7,600	7,700	7,300	-100	-1.3%	300	4.1%
Professional and Business Services	15,000	15,200	15,000	-200	-1.3%	0	0.0%
Education and Health Services	30,800	31,000	30,100	-200	-0.7%	700	2.3%
Leisure and Hospitality	22,300	22,700	20,700	-400	-1.8%	1,600	7.7%
Other Services	7,900	7,900	7,200	0	0.0%	700	9.7%
Government	32,500	33,400	33,300	-900	-2.7%	-800	-2.4%

Industry Size Class September 2012

Size Class	Employees per firm	Number of Firms	Employment in Size Class	% Total Employment
9	1000+	17	39,903	22.1%
8	500-999	26	17,726	9.8%
7	250-499	49	16,264	9.0%
6	100-249	193	29,429	16.3%
5	50-99	326	22,848	12.6%
4	20-49	768	23,127	12.8%
3	10-19	1,060	14,361	7.9%
2	5-9	1,445	9,608	5.3%
1	1-4	3,626	7,622	4.2%
0	0	529	0	0.0%
Total		8,039	180,888	100.0%

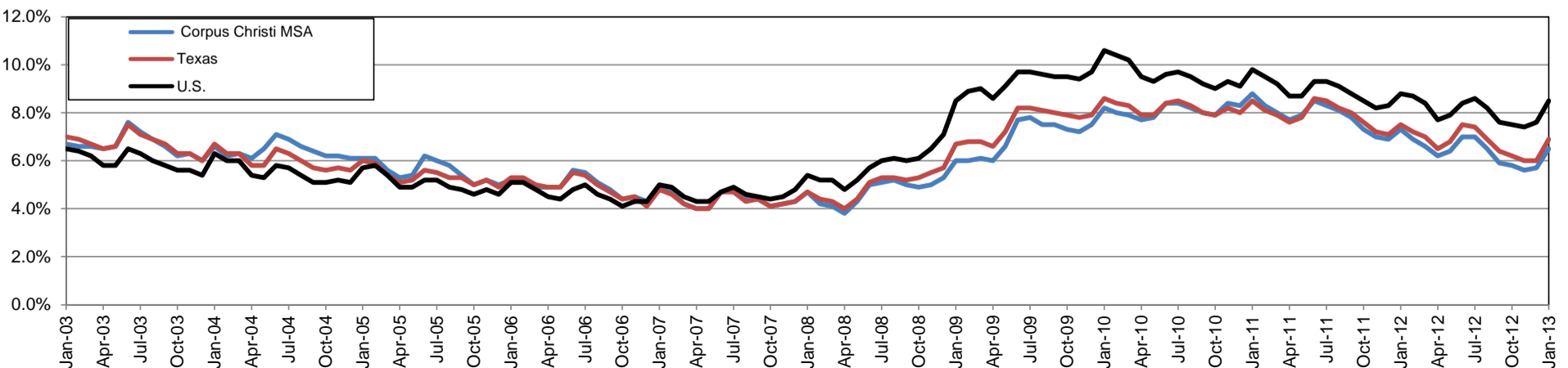
Annual Growth Rate for Total Nonagricultural Employment



Unemployment Information (all estimates in thousands)

	Corpus Christi MSA				Texas (Actual)				United States (Actual)			
	C.L.F.	Emp.	Unemp.	Rate	C.L.F.	Emp.	Unemp.	Rate	C.L.F.	Emp.	Unemp.	Rate
Jan-13	216.8	202.8	14.0	6.5	12,655.4	11,782.8	872.6	6.9	154,794.0	141,614.0	13,181.0	8.5
Dec-12	216.5	204.2	12.3	5.7	12,634.5	11,870.3	764.2	6.0	154,904.0	143,060.0	11,844.0	7.6
Jan-12	214.1	198.4	15.7	7.3	12,486.7	11,552.0	934.7	7.5	153,485.0	139,944.0	13,541.0	8.8

Historical Unemployment Rates

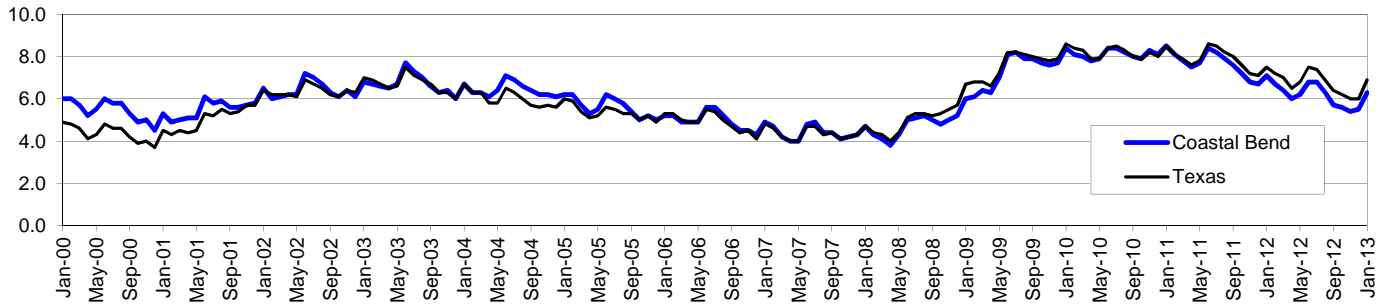


Coastal Bend Workforce Development Area*

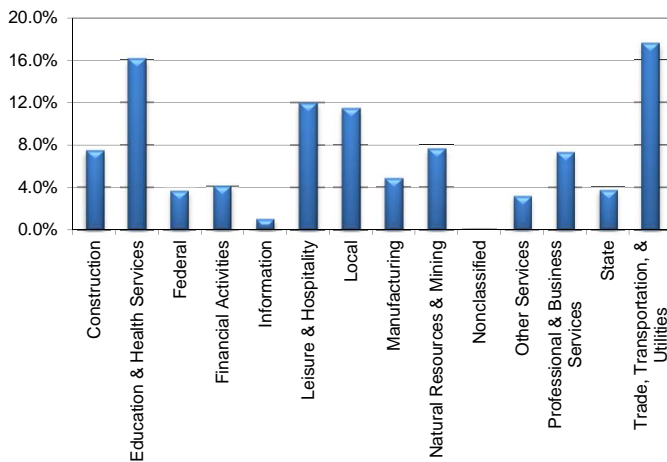
January 2013

Coastal Bend WDA					Texas				
	CLF	Employed	Unemployed	Rate		CLF	Employed	Unemployed	Rate
Jan-13	295,731	277,213	18,518	6.3	Jan-13	12,655,394	11,782,758	872,636	6.9
Dec-12	294,651	278,426	16,225	5.5	Dec-12	12,634,533	11,870,344	764,189	6.0
Jan-12	290,490	269,964	20,526	7.1	Jan-12	12,486,708	11,552,047	934,661	7.5

Historical Unemployment Rates



Coastal Bend WDA Industry Composition 3rd Quarter 2012



Total WDA Claims

Continued Claims for the Week of the 12th

	Jan-13	Dec-12	Jan-12	OTY
Continued	2,694	2,629	2,925	-231

Texas Unemployment Insurance Claims

Continued Claims for the Week of the 12th

	Jan-13	Dec-12	Jan-12	OTY
Continued	136,785	129,052	146,345	-9,560

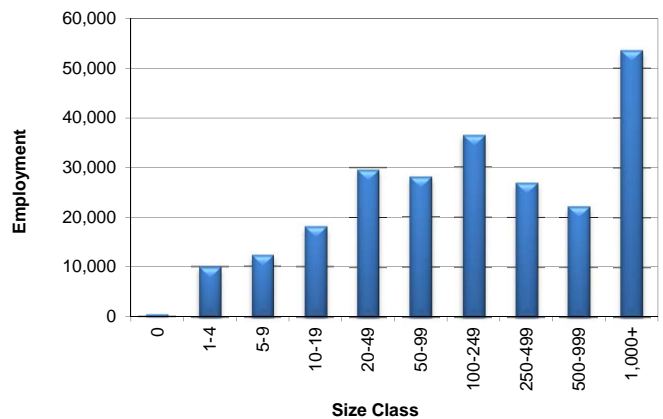
Coastal Bend WDA Average Weekly Wage

	Coastal Bend	Texas
3rd Quarter 2012	\$798.99	\$929.84
2nd Quarter 2012	\$793.24	\$922.14
3rd Quarter 2011	\$782.72	\$931.54
Quarter Change	\$5.75	\$7.70
OTY Change	\$16.27	-\$1.70

NAICS Covered Employment Quarterly Data 3rd Quarter 2012

SUPER SECTOR	Employment	Change	
		Quarter	Year
Construction	17,693	-697	809
Education & Health Services	38,267	-127	-2,077
Federal	8,621	8	-27
Financial Activities	9,607	138	279
Information	2,315	11	37
Leisure & Hospitality	28,432	474	1,949
Local	27,160	-2,015	-232
Manufacturing	11,458	88	524
Natural Resources & Mining	18,112	602	3,232
Nonclassified	69	38	34
Other Services	7,429	258	976
Professional & Business Services	17,348	-250	554
State	8,779	-697	-587
Trade, Transportation, & Utilities	41,730	419	1,683
TOTAL	237,020	-1,750	7,154

Size Class Employment Composition 3rd Quarter 2012



*Counties in WDA: Aransas, Bee, Brooks, Duval, Jim Wells, Kenedy, Kleberg, Live Oak, McMullen, Nueces, Refugio, & San Patricio