



Coastal Bend Workforce Area

Area	Area Type	Latest Monthly Data January 2011				Previous Monthly Data December 2010				Year Ago January 2010			
		Labor Force	Employment	Unemployment	Rate	Labor Force	Employment	Unemployment	Rate	Labor Force	Employment	Unemployment	Rate
U.S.	Nation	152,536,000	137,599,000	14,937,000	9.8	153,156,000	139,159,000	13,997,000	9.1	152,957,000	136,809,000	16,147,000	10.6
Texas	State	12,150,757	11,115,202	1,035,555	8.5	12,191,581	11,215,647	975,934	8.0	12,007,797	10,980,178	1,027,619	8.6
Corpus Christi	MSA	213,068	194,533	18,535	8.7	214,264	196,711	17,553	8.2	210,141	192,959	17,182	8.2
Coastal Bend	WDA	282,320	258,054	24,266	8.6	283,894	260,877	23,017	8.1	279,316	255,962	23,354	8.4
Aransas	County	11,836	10,849	987	8.3	11,927	10,970	957	8.0	11,767	10,761	1,006	8.5
Bee	County	12,480	11,297	1,183	9.5	12,451	11,334	1,117	9.0	12,276	11,122	1,154	9.4
Brooks	County	3,175	2,865	310	9.8	3,229	2,922	307	9.5	3,235	2,908	327	10.1
Duval	County	5,288	4,704	584	11.0	5,287	4,724	563	10.6	5,254	4,614	640	12.2
Jim Wells	County	21,012	19,319	1,693	8.1	21,129	19,489	1,640	7.8	21,396	19,317	2,079	9.7
Kenedy	County	231	221	10	4.3	235	225	10	4.3	236	220	16	6.8
Kleberg	County	17,201	15,914	1,287	7.5	17,404	16,199	1,205	6.9	17,013	15,787	1,226	7.2
Live Oak	County	5,276	4,928	348	6.6	5,289	4,970	319	6.0	5,248	4,854	394	7.5
McMullen	County	369	344	25	6.8	383	358	25	6.5	366	338	28	7.7
Nueces	County	169,663	155,487	14,176	8.4	170,586	157,227	13,359	7.8	166,976	154,229	12,747	7.6
Refugio	County	4,220	3,929	291	6.9	4,224	3,946	278	6.6	4,151	3,843	308	7.4
San Patricio	County	31,569	28,197	3,372	10.7	31,750	28,513	3,237	10.2	31,398	27,969	3,429	10.9

Earnings for all occupations Coastal Bend, expressed as hourly rate (TWC):

Coastal Bend - All Occupations - Average \$16.86/hr.; Entry level \$7.88/hr.; Experienced workers \$21.34/hr.; top 10% \$30.73/hr.

Texas - All Occupations - Average \$19.76/hr.; Entry level \$8.51/hr.; Experienced workers \$ 25.38/hr.; top 10% \$36.91/hr.

Educational Attainment for population 25 years of age and older - Corpus Christi (Census American Fact Finder / American Community Survey):

Less than 9th grade 9.3%; 9th thru 11th grade 11.8%; 12th grade and GED 26.7%; some college 24.7%; Associates degree 7.4%;

Bachelors degree 13.0%; Graduate or Professional degrees 7.0%

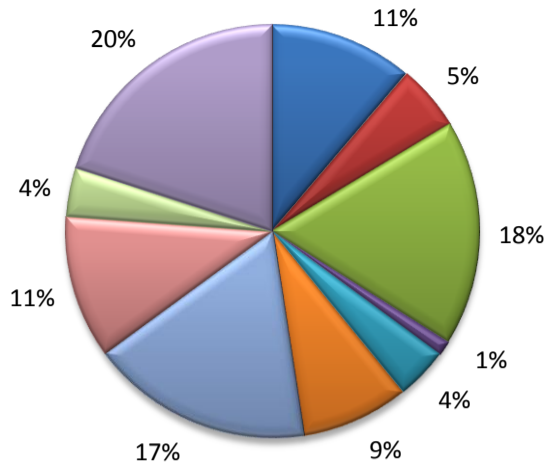
Median earnings Corpus Christi by education for persons 25 years of age & up (Census AFF / ACS): \$27,211 (\$36,380 male/ \$22,328 female)

Less than High School \$15,545 Some College or Associates \$31,460 Graduate & Professional \$54,717

High School & GED \$23,028 Bachelor's \$43,005

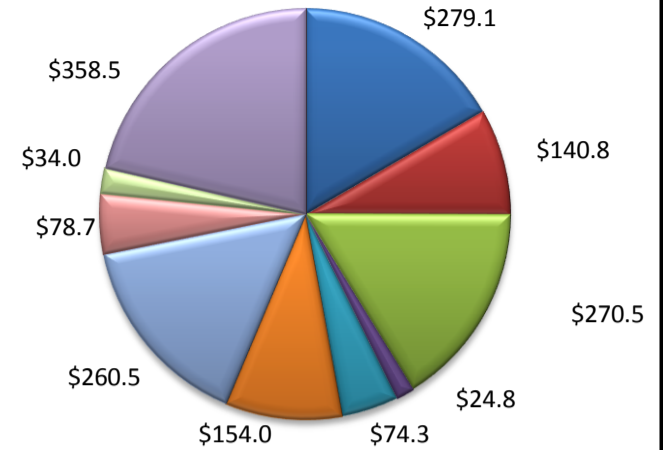
(Aransas, Nueces, San Patricio)

Industry Composition



- Mining, Logging, and Construction
- Manufacturing
- Trade, Transportation, and Utilities
- Information
- Financial Activities
- Professional and Business Services
- Education and Health Services
- Leisure and Hospitality
- Other Services
- Government

Wages by Industry (in millions)
3rd Quarter 2010



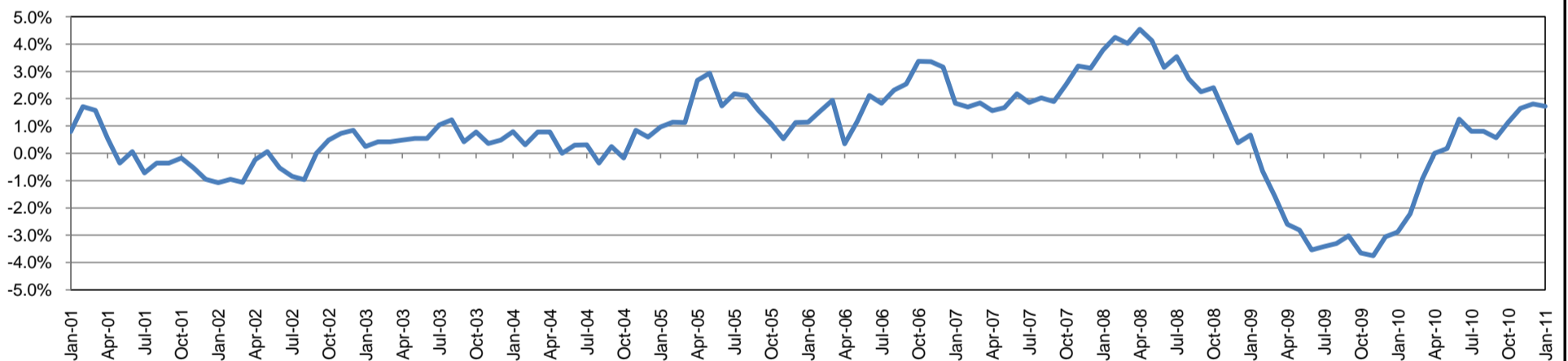
Employment by Industry

	Jan-11	Dec-10	Jan-10	Monthly Change		Annual Change	
				Actual	%	Actual	%
Total Nonfarm	177,800	180,200	174,800	-2,400	-1.3%	3,000	1.7%
Mining, Logging, and Construction	19,900	20,000	19,500	-100	-0.5%	400	2.1%
Manufacturing	9,200	9,300	9,300	-100	-1.1%	-100	-1.1%
Trade, Transportation, and Utilities	31,200	31,900	30,500	-700	-2.2%	700	2.3%
Information	2,100	2,100	2,200	0	0.0%	-100	-4.6%
Financial Activities	7,200	7,200	7,400	0	0.0%	-200	-2.7%
Professional and Business Services	15,000	15,200	15,200	-200	-1.3%	-200	-1.3%
Education and Health Services	30,900	31,100	30,100	-200	-0.6%	800	2.7%
Leisure and Hospitality	19,900	20,500	19,400	-600	-2.9%	500	2.6%
Other Services	6,800	6,800	6,800	0	0.0%	0	0.0%
Government	35,600	36,100	34,400	-500	-1.4%	1,200	3.5%

Industry Size Class

Size Class	Employees per firm	Number of Firms	September 2010		
			Employment in Size Class	% Total Employment	
9	1000+	21	45,998	26.3%	
8	500-999	18	12,445	7.1%	
7	250-499	44	14,977	8.6%	
6	100-249	179	27,253	15.6%	
5	50-99	289	20,411	11.7%	
4	20-49	750	22,861	13.1%	
3	10-19	991	13,524	7.7%	
2	5-9	1,524	10,061	5.7%	
1	1-4	3,625	7,492	4.3%	
0	0	574	0	0.0%	
Total			8,015	175,022	100.0%

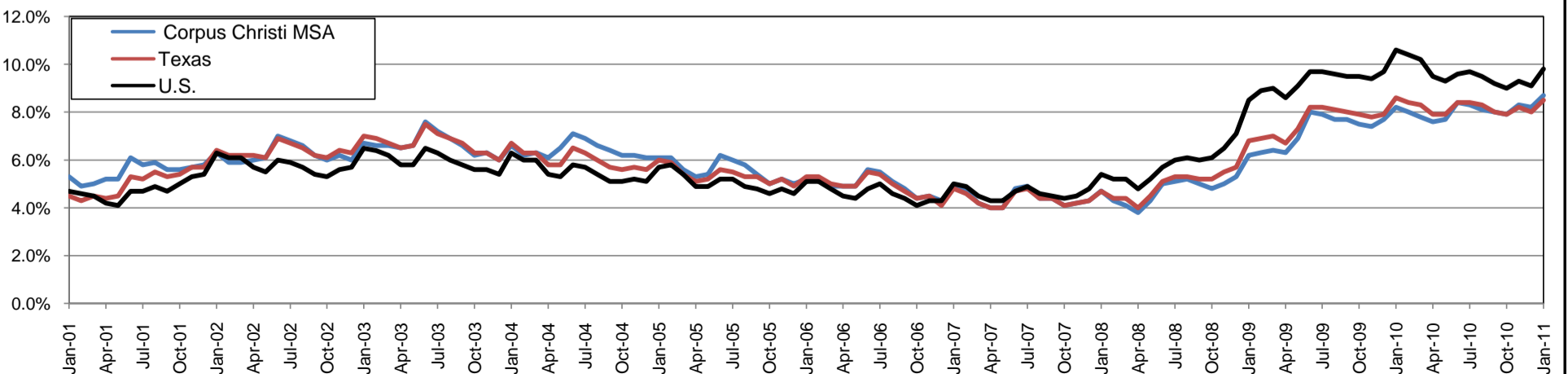
Annual Growth Rate for Total Nonagricultural Employment



Unemployment Information (all estimates in thousands)

	Corpus Christi MSA				Texas (Actual)				United States (Actual)			
	C.L.F.	Emp.	Unemp.	Rate	C.L.F.	Emp.	Unemp.	Rate	C.L.F.	Emp.	Unemp.	Rate
Jan-11	213.0	194.5	18.5	8.7	12,150.8	11,115.2	1,035.6	8.5	152,536.0	137,599.0	14,937.0	9.8
Dec-10	214.3	196.7	17.6	8.2	12,191.5	11,215.6	975.9	8.0	153,156.0	139,159.0	13,997.0	9.1
Jan-10	210.2	193.0	17.2	8.2	12,007.8	10,980.2	1,027.6	8.6	152,957.0	136,809.0	16,147.0	10.6

Historical Unemployment Rates

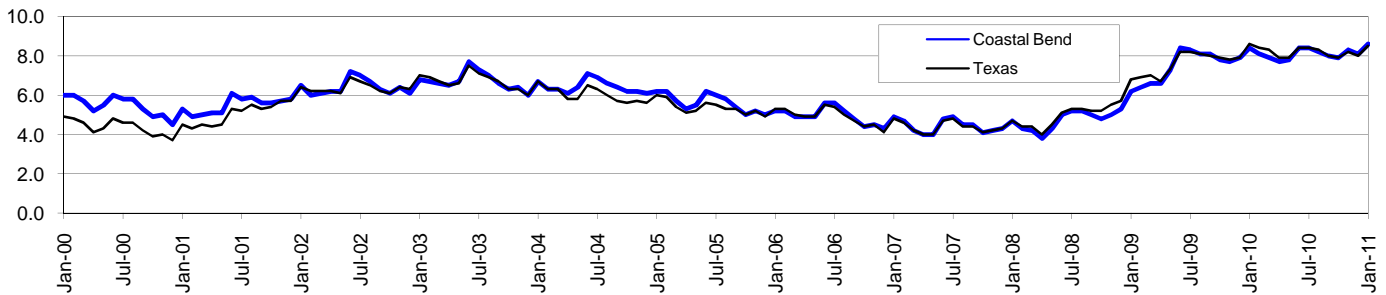


Coastal Bend Workforce Development Area*

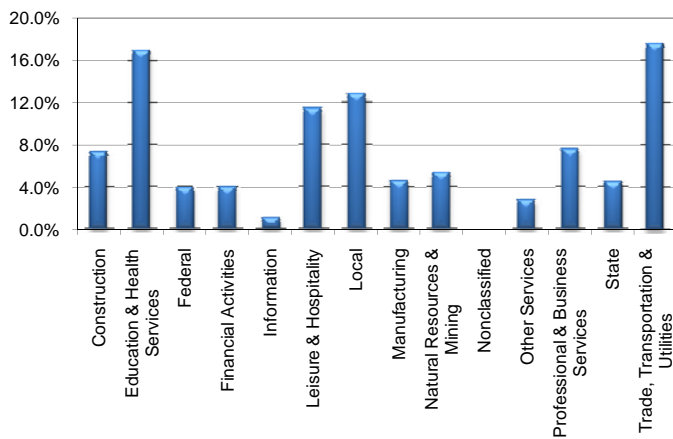
January 2011

Coastal Bend WDA					Texas				
	CLF	Employed	Unemployed	Rate		CLF	Employed	Unemployed	Rate
Jan-11	282,320	258,054	24,266	8.6	Jan-11	12,150,757	11,115,202	1,035,555	8.5
Dec-10	283,894	260,877	23,017	8.1	Dec-10	12,191,581	11,215,647	975,934	8.0
Jan-10	279,316	255,962	23,354	8.4	Jan-10	12,007,797	10,980,178	1,027,619	8.6

Historical Unemployment Rates



Coastal Bend WDA Industry Composition 3rd Quarter 2010



Total WDA Claims

	Jan-11	Dec-10	Jan-10	OTY
Initial	2,155	2,228	2,303	-148
Continued	9,640	9,604	11,915	-2,275
Continued Claims for the Week of the 12th				
Continued	8,971	8,758	10,450	-1,479

Texas Unemployment Insurance Claims Filed

	Jan-11	Dec-10	Jan-10	OTY
Initial	98,517	85,610	108,752	-10,235
Continued	960,319	880,919	1,201,595	-241,276
Continued Claims for the Week of the 12th				
Continued	208,853	208,598	264,374	-55,521

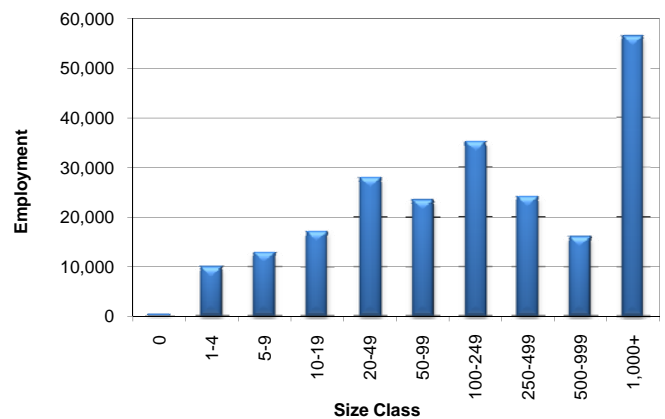
Coastal Bend WDA Average Weekly Wage

	Coastal Bend	WDA Qtr. Chg.	Texas
3rd Quarter 2010	\$726.14	\$15.67	\$875.52
2nd Quarter 2010	\$710.47	WDA OTY Chg.	\$863.80
3rd Quarter 2009	\$696.82	\$29.32	\$844.49

NAICS Covered Employment Quarterly Data 3rd Quarter 2010

SUPER SECTOR	Employment	Change	
		Quarter	Year
Construction	16,463	-226	-83
Education & Health Services	37,977	421	1,214
Federal	8,783	-370	260
Financial Activities	8,934	-135	-321
Information	2,377	-88	-195
Leisure & Hospitality	25,509	-600	-373
Local	28,748	-2,101	589
Manufacturing	10,348	158	-305
Natural Resources & Mining	11,940	896	1,676
Nonclassified	38	13	0
Other Services	6,264	-117	-50
Professional & Business Services	16,867	67	300
State	9,925	-381	390
Trade, Transportation & Utilities	39,273	523	316
TOTAL	223,446	-1,940	3,418

Size Class Employment Composition 3rd Quarter 2010



*Counties in WDA: Aransas, Bee, Brooks, Duval, Jim Wells, Kenedy, Kleberg, Live Oak, McMullen, Nueces, Refugio, & San Patricio