

Coastal Bend Workforce Area

Area	Area Type	Latest Monthly Data February 2012						Previous Monthly Data January 2012				Year Ago February 2011			
		Labor Force	Employment	Unemployment	Rate	M+-	Y+-	Labor Force	Employment	Unemployment	Rate	Labor Force	Employment	Unemployment	Rate
United States	Nation	154,114,000	140,684,000	13,430,000	8.7	-0.1	-0.8	153,485,000	139,944,000	13,541,000	8.8	152,635,000	138,093,000	14,542,000	9.5
Texas	State	12,464,812	11,570,544	894,268	7.2	-0.4	-0.9	12,461,937	11,515,306	946,631	7.6	12,343,147	11,338,366	1,004,781	8.1
Corpus Christi	MSA	218,899	204,068	14,831	6.8	-0.5	-1.5	218,597	202,552	16,045	7.3	213,599	195,796	17,803	8.3
Coastal Bend	WDA	293,254	273,857	19,397	6.6	-0.5	-1.5	292,948	272,012	20,936	7.1	286,572	263,319	23,253	8.1
Aransas	County	11,057	10,292	765	6.9	-0.5	-1.8	11,034	10,216	818	7.4	10,821	9,875	946	8.7
Bee	County	12,592	11,654	938	7.4	-0.6	-1.4	12,566	11,559	1,007	8.0	12,547	11,444	1,103	8.8
Brooks	County	3,297	3,050	247	7.5	-0.6	-1.0	3,341	3,070	271	8.1	3,337	3,052	285	8.5
Duval	County	5,539	5,127	412	7.4	-0.6	-2.9	5,550	5,108	442	8.0	5,592	5,016	576	10.3
Jim Wells	County	23,527	22,203	1,324	5.6	-0.4	-1.4	23,629	22,219	1,410	6.0	22,924	21,308	1,616	7.0
Kenedy	County	259	251	8	3.1	0.0	-0.1	255	247	8	3.1	253	245	8	3.2
Kleberg	County	17,835	16,746	1,089	6.1	-0.6	-1.0	17,662	16,479	1,183	6.7	17,614	16,367	1,247	7.1
Live Oak	County	6,332	6,035	297	4.7	-0.2	-0.8	6,371	6,058	313	4.9	5,828	5,507	321	5.5
McMullen	County	574	555	19	3.3	0.0	-0.6	568	549	19	3.3	542	521	21	3.9
Nueces	County	178,259	166,537	11,722	6.6	-0.5	-1.4	177,947	165,299	12,648	7.1	173,590	159,786	13,804	8.0
Refugio	County	4,400	4,168	232	5.3	-0.1	-1.0	4,409	4,171	238	5.4	4,336	4,063	273	6.3
San Patricio	County	29,583	27,239	2,344	7.9	-0.8	-2.6	29,616	27,037	2,579	8.7	29,188	26,135	3,053	10.5

(M+-) Change in unemployment rate from last month (Increase) (Decrease)

(Y+-) Change in unemployment rate from last year (Increase) (Decrease)

- Earnings for all occupations Coastal Bend, expressed as hourly rate (TWC):

Coastal Bend	All Occupations-	Average \$17.28/hr.	Entry level \$8.30/hr.	Experienced workers \$21.77/hr.	Top 10% \$31.60/hr.
Texas	All Occupations-	Average \$20.30/hr.	Entry level \$9.62/hr.	Experienced workers \$ 25.68/hr.	Top 10% \$37.83/hr.

- Educational Attainment for population 25 years of age and older - Corpus Christi (Census American Fact Finder/American Community Survey):

Less than 9 th grade	9.3%	12 th grade & GED	26.7%	Associates degree	7.4%	Graduate or Professional degrees	7.0%
9 th thru 11 th grade	11.8%	Some College	24.7%	Bachelors degree	13.0%		

- Median earnings Corpus Christi by education for persons 25 years of age & up (Census AFF/ACS): \$27,211 (\$36,380 male/ \$22,328 female)

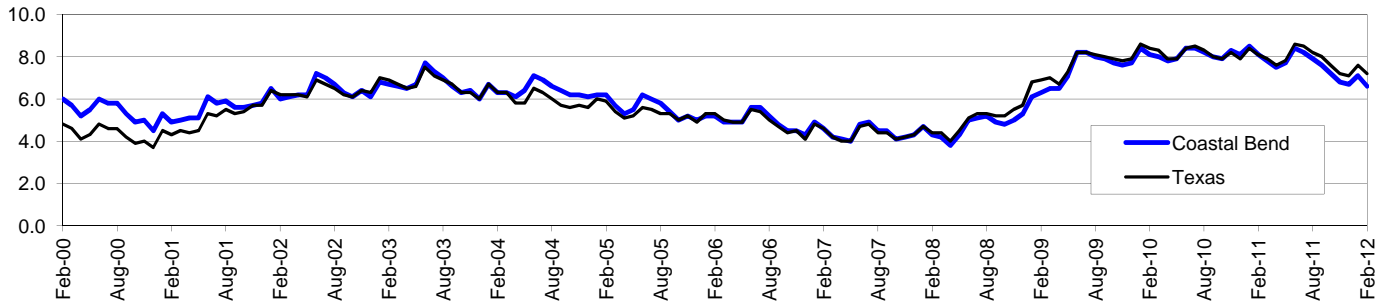
Less than High School	\$15,545	Some College or Associates	\$31,460	Graduate or Professional	\$54,717
High School & GED	\$23,028	Bachelor's	\$43,005		

Coastal Bend Workforce Development Area*

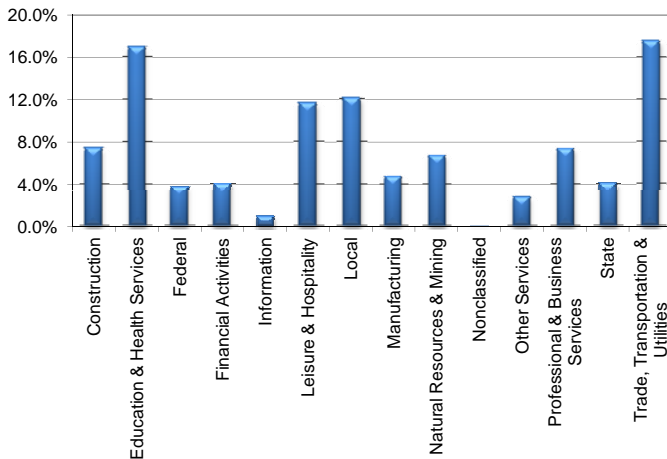
February 2012

Coastal Bend WDA					Texas				
	CLF	Employed	Unemployed	Rate		CLF	Employed	Unemployed	Rate
Feb-12	293,254	273,857	19,397	6.6	Feb-12	12,464,812	11,570,544	894,268	7.2
Jan-12	292,948	272,012	20,936	7.1	Jan-12	12,461,937	11,515,306	946,631	7.6
Feb-11	286,572	263,319	23,253	8.1	Feb-11	12,343,147	11,338,366	1,004,781	8.1

Historical Unemployment Rates



Coastal Bend WDA Industry Composition 3rd Quarter 2011



Total WDA Claims

Continued Claims for the Week of the 12th

	Feb-12	Jan-12	Feb-11	OTY
Continued	2,488	2,922	3,529	-1,041

Texas Unemployment Insurance Claims

Continued Claims for the Week of the 12th

	Feb-12	Jan-12	Feb-11	OTY
Continued	134,749	146,345	153,046	-18,297

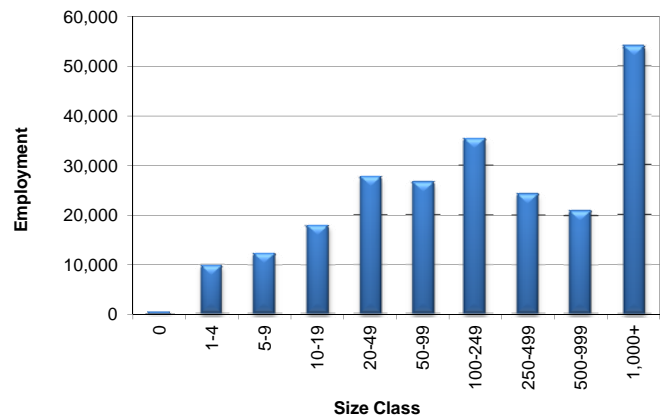
Coastal Bend WDA Average Weekly Wage

	Coastal Bend	Texas
3rd Quarter 2011	\$787.52	\$931.50
2nd Quarter 2011	\$752.98	\$899.57
3rd Quarter 2010	\$727.02	\$876.29
Quarter Change	\$34.54	\$31.93
OTY Change	\$60.50	\$55.21

NAICS Covered Employment Quarterly Data 3rd Quarter 2011

SUPER SECTOR	Employment	Change	
		Quarter	Year
Construction	16,838	269	575
Education & Health Services	38,813	348	815
Federal	8,646	78	-134
Financial Activities	9,326	122	387
Information	2,275	-27	-111
Leisure & Hospitality	26,556	236	904
Local	27,665	-2,562	-935
Manufacturing	10,926	317	582
Natural Resources & Mining	15,438	1,498	3,484
Nonclassified	39	26	11
Other Services	6,405	-61	142
Professional & Business Services	16,793	-344	-82
State	9,365	-854	-561
Trade, Transportation & Utilities	40,191	956	933
TOTAL	229,276	2	6,010

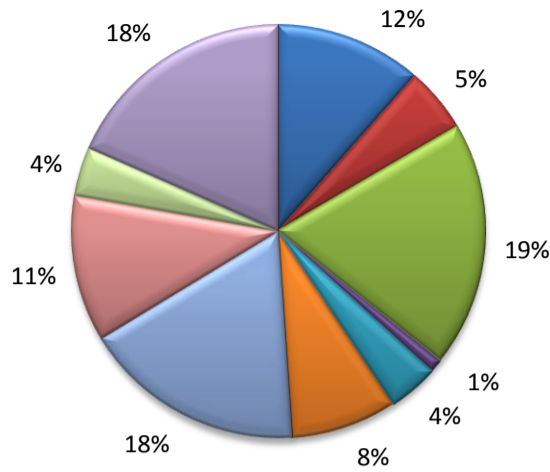
Size Class Employment Composition 3rd Quarter 2011



*Counties in WDA: Aransas, Bee, Brooks, Duval, Jim Wells, Kenedy, Kleberg, Live Oak, McMullen, Nueces, Refugio, & San Patricio

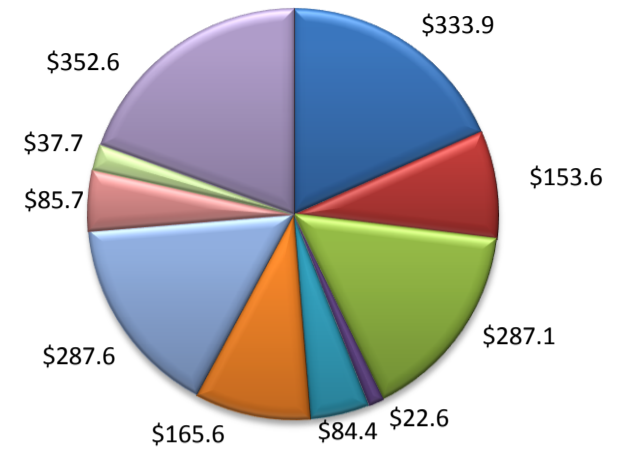
(Aransas, Nueces, San Patricio)

Industry Composition



- Mining, Logging, and Construction
- Manufacturing
- Trade, Transportation, and Utilities
- Information
- Financial Activities
- Professional and Business Services
- Education and Health Services
- Leisure and Hospitality
- Other Services
- Government

Wages by Industry (in millions)
3rd Quarter 2011



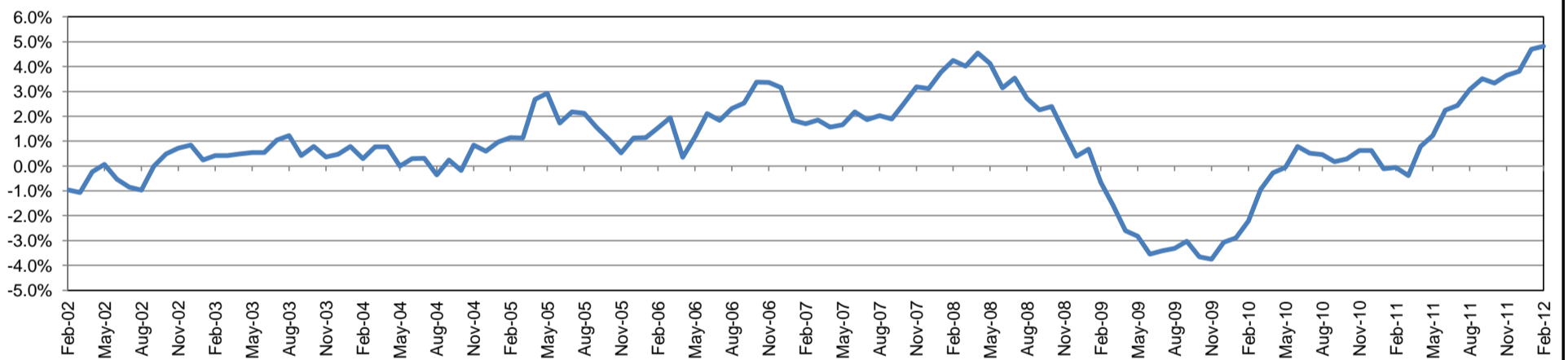
Employment by Industry

	Feb-12	Jan-12	Feb-11	Monthly Change		Annual Change	
				Actual	%	Actual	%
Total Nonfarm	184,800	182,800	176,300	2,000	1.1%	8,500	4.8%
Mining, Logging, and Construction	21,100	21,000	19,300	100	0.5%	1,800	9.3%
Manufacturing	9,500	9,500	9,200	0	0.0%	300	3.3%
Trade, Transportation, and Utilities	35,400	34,900	30,800	500	1.4%	4,600	14.9%
Information	1,900	1,900	2,000	0	0.0%	-100	-5.0%
Financial Activities	7,300	7,300	7,100	0	0.0%	200	2.8%
Professional and Business Services	15,200	15,100	15,000	100	0.7%	200	1.3%
Education and Health Services	32,200	32,000	31,000	200	0.6%	1,200	3.9%
Leisure and Hospitality	21,100	20,700	19,800	400	1.9%	1,300	6.6%
Other Services	7,100	7,000	6,700	100	1.4%	400	6.0%
Government	34,000	33,400	35,400	600	1.8%	-1,400	-4.0%

Industry Size Class September 2011

Size Class	Employees per firm	Number of Firms	Employment in Size Class	% Total Employment
9	1000+	17	41,334	23.3%
8	500-999	26	17,712	10.0%
7	250-499	45	14,761	8.3%
6	100-249	185	28,084	15.9%
5	50-99	305	21,351	12.1%
4	20-49	734	22,437	12.7%
3	10-19	1,051	14,209	8.0%
2	5-9	1,478	9,770	5.5%
1	1-4	3,605	7,444	4.2%
0	0	584	0	0.0%
Total		8,030	177,102	100.0%

Annual Growth Rate for Total Nonagricultural Employment



Unemployment Information (all estimates in thousands)

	Corpus Christi MSA				Texas (Actual)				United States (Actual)			
	C.L.F.	Emp.	Unemp.	Rate	C.L.F.	Emp.	Unemp.	Rate	C.L.F.	Emp.	Unemp.	Rate
Feb-12	218.9	204.1	14.8	6.8	12,464.8	11,570.5	894.3	7.2	154,114.0	140,684.0	13,430.0	8.7
Jan-12	218.6	202.6	16.0	7.3	12,461.9	11,515.3	946.6	7.6	153,485.0	139,944.0	13,541.0	8.8
Feb-11	213.6	195.8	17.8	8.3	12,343.2	11,338.4	1,004.8	8.1	152,635.0	138,093.0	14,542.0	9.5

Historical Unemployment Rates

