

Coastal Bend Workforce Area

Area	Area Type	Latest Monthly Data February 2011				Previous Monthly Data January 2011				Year Ago February 2010			
		Labor Force	Employment	Unemployment	Rate	Labor Force	Employment	Unemployment	Rate	Labor Force	Employment	Unemployment	Rate
U.S.	Nation	152,635,000	138,093,000	14,542,000	9.5	152,536,000	137,599,000	14,937,000	9.8	153,194,000	137,203,000	15,991,000	10.4
Texas	State	12,152,422	11,159,899	992,523	8.2	12,150,630	11,115,114	1,035,516	8.5	12,023,918	11,016,106	1,007,812	8.4
Corpus Christi	MSA	213,315	195,825	17,490	8.2	212,950	194,425	18,525	8.7	210,973	194,184	16,789	8.0
Coastal Bend	WDA	282,726	259,779	22,947	8.1	282,190	257,933	24,257	8.6	280,336	257,562	22,774	8.1
Aransas	County	11,900	10,921	979	8.2	11,830	10,843	987	8.3	11,845	10,830	1,015	8.6
Bee	County	12,481	11,352	1,129	9.0	12,477	11,294	1,183	9.5	12,344	11,221	1,123	9.1
Brooks	County	3,136	2,848	288	9.2	3,175	2,865	310	9.8	3,210	2,890	320	10.0
Duval	County	5,311	4,738	573	10.8	5,287	4,703	584	11.0	5,269	4,642	627	11.9
Jim Wells	County	21,023	19,396	1,627	7.7	21,010	19,316	1,694	8.1	21,352	19,359	1,993	9.3
Kenedy	County	232	225	7	3.0	231	221	10	4.3	248	223	25	10.1
Kleberg	County	17,379	16,160	1,219	7.0	17,199	15,911	1,288	7.5	17,201	16,013	1,188	6.9
Live Oak	County	5,271	4,955	316	6.0	5,275	4,927	348	6.6	5,210	4,832	378	7.3
McMullen	County	369	345	24	6.5	368	343	25	6.8	362	341	21	5.8
Nueces	County	169,928	156,519	13,409	7.9	169,570	155,400	14,170	8.4	167,590	155,208	12,382	7.4
Refugio	County	4,208	3,935	273	6.5	4,218	3,928	290	6.9	4,166	3,856	310	7.4
San Patricio	County	31,488	28,385	3,103	9.9	31,550	28,182	3,368	10.7	31,539	28,147	3,392	10.8

- Earnings for all occupations Coastal Bend, expressed as hourly rate (TWC):

Coastal Bend	All Occupations-	Average \$16.86/hr.	Entry level \$7.88/hr.	Experienced workers \$21.34/hr.	Top 10% \$30.73/hr.
Texas	All Occupations-	Average \$19.76/hr.	Entry level \$8.51/hr.	Experienced workers \$ 25.38/hr.	Top 10% \$36.91/hr.

- Educational Attainment for population 25 years of age and older - Corpus Christi (Census American Fact Finder / American Community Survey):

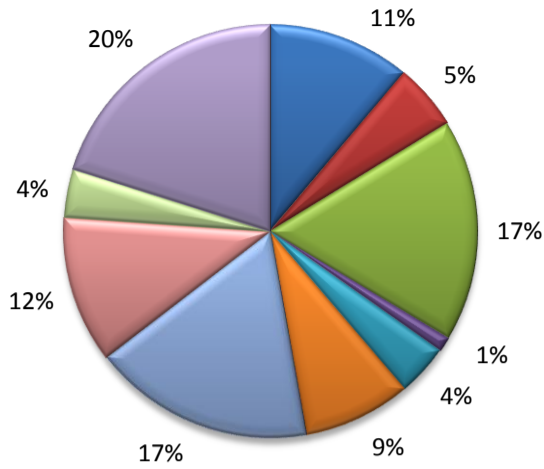
Less than 9 th grade	9.3%	12 th grade & GED	26.7%	Associates degree	7.4%	Graduate or Professional degrees	7.0%
9 th thru 11 th grade	11.8%	Some College	24.7%	Bachelors degree	13.0%		

- Median earnings Corpus Christi by education for persons 25 years of age & up (Census AFF / ACS): **\$27,211** (\$36,380 male/ \$22,328 female)

Less than High School	\$15,545	Some College or Associates	\$31,460	Graduate or Professional	\$54,717
High School & GED	\$23,028	Bachelor's	\$43,005		

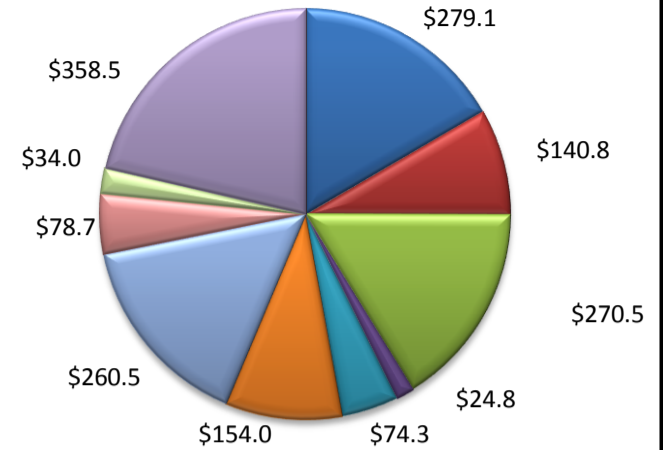
(Aransas, Nueces, San Patricio)

Industry Composition



- Mining, Logging, and Construction
- Manufacturing
- Trade, Transportation, and Utilities
- Information
- Financial Activities
- Professional and Business Services
- Education and Health Services
- Leisure and Hospitality
- Other Services
- Government

Wages by Industry (in millions)
3rd Quarter 2010



Employment by Industry

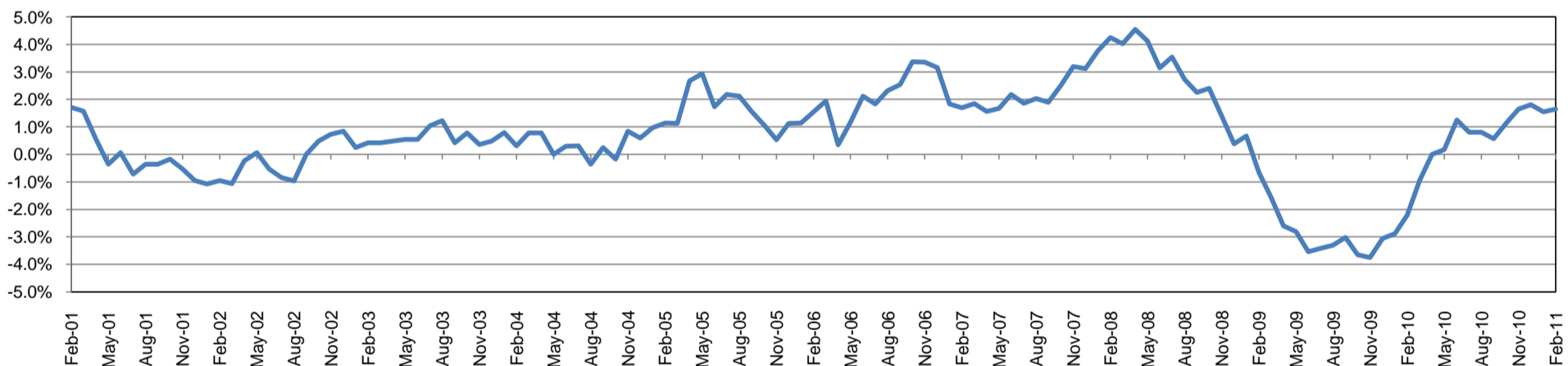
	Feb-11	Jan-11	Feb-10	Monthly Change		Annual Change	
				Actual	%	Actual	%
Total Nonfarm	179,300	177,500	176,400	1,800	1.0%	2,900	1.6%
Mining, Logging, and Construction	19,900	19,800	19,900	100	0.5%	0	0.0%
Manufacturing	9,200	9,200	9,300	0	0.0%	-100	-1.1%
Trade, Transportation, and Utilities	31,100	31,000	30,400	100	0.3%	700	2.3%
Information	2,100	2,100	2,200	0	0.0%	-100	-4.6%
Financial Activities	7,200	7,200	7,400	0	0.0%	-200	-2.7%
Professional and Business Services	15,100	15,000	15,200	100	0.7%	-100	-0.7%
Education and Health Services	31,200	30,900	30,400	300	1.0%	800	2.6%
Leisure and Hospitality	20,600	20,100	19,800	500	2.5%	800	4.0%
Other Services	6,800	6,800	6,800	0	0.0%	0	0.0%
Government	36,100	35,400	35,000	700	2.0%	1,100	3.1%

Industry Size Class

September 2010

Size Class	Employees per firm	Number of Firms	Employment in Size Class	% Total Employment
9	1000+	21	45,998	26.3%
8	500-999	18	12,445	7.1%
7	250-499	44	14,977	8.6%
6	100-249	179	27,253	15.6%
5	50-99	289	20,411	11.7%
4	20-49	750	22,861	13.1%
3	10-19	991	13,524	7.7%
2	5-9	1,524	10,061	5.7%
1	1-4	3,625	7,492	4.3%
0	0	574	0	0.0%
Total		8,015	175,022	100.0%

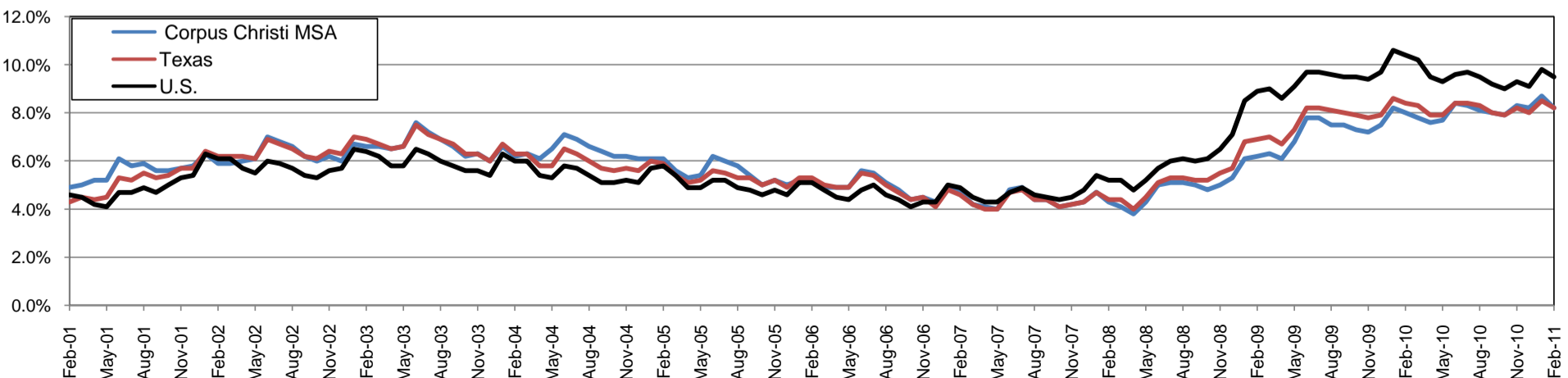
Annual Growth Rate for Total Nonagricultural Employment



Unemployment Information (all estimates in thousands)

	Corpus Christi MSA				Texas (Actual)				United States (Actual)			
	C.L.F.	Emp.	Unemp.	Rate	C.L.F.	Emp.	Unemp.	Rate	C.L.F.	Emp.	Unemp.	Rate
Feb-11	213.3	195.8	17.5	8.2	12,152.4	11,159.9	992.5	8.2	152,635.0	138,093.0	14,542.0	9.5
Jan-11	212.9	194.4	18.5	8.7	12,150.6	11,115.1	1,035.5	8.5	152,536.0	137,599.0	14,937.0	9.8
Feb-10	211.0	194.2	16.8	8.0	12,023.9	11,016.1	1,007.8	8.4	153,194.0	137,203.0	15,991.0	10.4

Historical Unemployment Rates

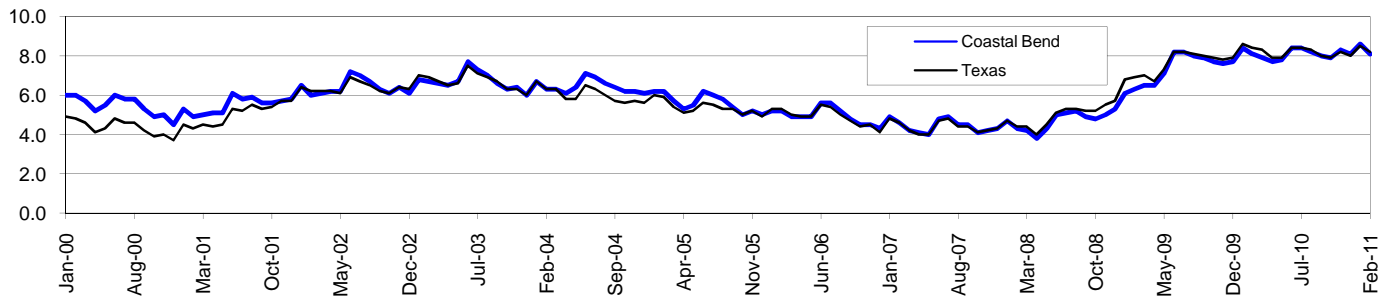


Coastal Bend Workforce Development Area*

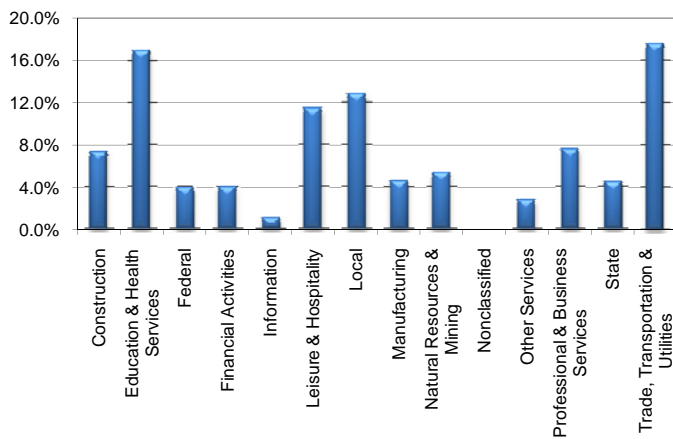
February 2011

Coastal Bend WDA					Texas				
	CLF	Employed	Unemployed	Rate		CLF	Employed	Unemployed	Rate
Feb-11	282,726	259,779	22,947	8.1	Feb-11	12,152,422	11,159,899	992,523	8.2
Jan-11	282,190	257,933	24,257	8.6	Jan-11	12,150,630	11,115,114	1,035,516	8.5
Feb-10	280,336	257,562	22,774	8.1	Feb-10	12,023,918	11,016,106	1,007,812	8.4

Historical Unemployment Rates



Coastal Bend WDA Industry Composition 3rd Quarter 2010



Total WDA Claims

	Feb-11	Jan-11	Feb-10	OTY
Initial	1,469	2,155	1,950	-481
Continued	7,770	9,640	10,363	-2,593
Continued Claims for the Week of the 12th				
Continued	7,760	8,991	9,611	-1,851

Texas Unemployment Insurance Claims Filed

	Feb-11	Jan-11	Feb-10	OTY
Initial	69,540	98,517	86,282	-16,742
Continued	795,729	960,319	1,020,691	-224,962
Continued Claims for the Week of the 12th				
Continued	200,536	208,853	249,038	-48,502

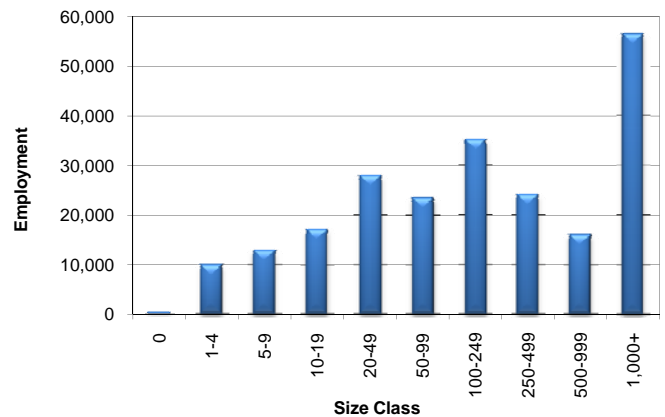
Coastal Bend WDA Average Weekly Wage

	Coastal Bend	WDA Qtr. Chg.	Texas
3rd Quarter 2010	\$726.14	\$15.67	\$875.52
2nd Quarter 2010	\$710.47	WDA OTY Chg.	\$863.80
3rd Quarter 2009	\$696.82	\$29.32	\$844.49

NAICS Covered Employment Quarterly Data 3rd Quarter 2010

SUPER SECTOR	Employment	Change	
		Quarter	Year
Construction	16,463	-226	-83
Education & Health Services	37,977	421	1,214
Federal	8,783	-370	260
Financial Activities	8,934	-135	-321
Information	2,377	-88	-195
Leisure & Hospitality	25,509	-600	-373
Local	28,748	-2,101	589
Manufacturing	10,348	158	-305
Natural Resources & Mining	11,940	896	1,676
Nonclassified	38	13	0
Other Services	6,264	-117	-50
Professional & Business Services	16,867	67	300
State	9,925	-381	390
Trade, Transportation & Utilities	39,273	523	316
TOTAL	223,446	-1,940	3,418

Size Class Employment Composition 3rd Quarter 2010



*Counties in WDA: Aransas, Bee, Brooks, Duval, Jim Wells, Kenedy, Kleberg, Live Oak, McMullen, Nueces, Refugio, & San Patricio