

Coastal Bend Workforce Area

(Not Seasonally Adjusted Unemployment Rates by WDA, MSA, & County)

Area	Area Type	Latest Monthly Data December 2014						Previous Monthly Data November 2014				Year Ago December 2013			
		Labor Force	Employment	Unemployment	Rate	M+-	Y+-	Labor Force	Employment	Unemployment	Rate	Labor Force	Employment	Unemployment	Rate
United States	Nation	156,129,000	147,442,000	8,688,000	5.6	-0.2	-1.1	156,402,000	147,331,000	9,071,000	5.8	155,047,000	144,671,000	10,376,000	6.7
Texas	State	13,056,940	12,450,060	606,880	4.6	-0.3	-1.4	13,059,316	12,416,193	643,123	4.9	12,869,599	12,102,299	767,300	6.0
Corpus Christi	MSA	221,113	211,520	9,593	4.3	-0.4	-1.2	222,241	211,721	10,520	4.7	217,933	205,957	11,976	5.5
Coastal Bend	WDA	300,026	287,539	12,487	4.2	-0.4	-1.1	301,685	287,891	13,794	4.6	297,464	281,752	15,712	5.3
Aransas	County	11,255	10,747	508	4.5	-0.3	-1.4	11,296	10,757	539	4.8	11,124	10,464	660	5.9
Bee	County	13,097	12,492	605	4.6	-0.6	-1.0	13,240	12,549	691	5.2	13,727	12,957	770	5.6
Brooks	County	3,371	3,202	169	5.0	-0.6	-1.0	3,387	3,199	188	5.6	3,471	3,263	208	6.0
Duval	County	6,012	5,744	268	4.5	-0.4	-0.9	6,077	5,777	300	4.9	6,060	5,731	329	5.4
Jim Wells	County	24,559	23,721	838	3.4	-0.5	-1.1	24,633	23,682	951	3.9	24,972	23,845	1,127	4.5
Kenedy	County	280	273	7	2.5	0.4	-0.7	281	275	6	2.1	277	268	9	3.2
Kleberg	County	18,250	17,597	653	3.6	-0.5	-1.1	18,439	17,692	747	4.1	18,124	17,267	857	4.7
Live Oak	County	7,560	7,359	201	2.7	-0.2	-0.8	7,561	7,342	219	2.9	7,329	7,074	255	3.5
McMullen	County	1,058	1,036	22	2.1	0.2	-0.3	1,041	1,021	20	1.9	842	822	20	2.4
Nueces	County	179,996	172,780	7,216	4.0	-0.4	-1.2	180,929	172,944	7,985	4.4	177,491	168,236	9,255	5.2
Refugio	County	4,726	4,595	131	2.8	-0.4	-0.6	4,785	4,633	152	3.2	4,729	4,568	161	3.4
San Patricio	County	29,862	27,993	1,869	6.3	-0.3	-0.7	30,016	28,020	1,996	6.6	29,318	27,257	2,061	7.0

(M+-) Change in unemployment rate from last month (Increase) (Decrease)

(Y+-) Change in unemployment rate from last year (Increase) (Decrease)

- Earnings for all occupations Coastal Bend, expressed as hourly rate (TWC):

Coastal Bend	All Occupations-	Average \$18.35/hr.	Entry level \$8.58/hr.	Experienced workers \$23.24/hr.	Top 10% \$33.56/hr.
Texas	All Occupations-	Average \$20.97/hr.	Entry level \$8.88/hr.	Experienced workers \$ 27.02/hr.	Top 10% \$39.64/hr.

- Educational Attainment for population 25 years of age and older - Corpus Christi (Census American Fact Finder/American Community Survey):

Less than 9 th grade	8.7%	12 th grade & GED	27.7%	Associates degree	7.0%	Graduate or Professional degrees	8.4%
9 th thru 11 th grade	9.3%	Some College	25.1%	Bachelors degree	13.8%		

- Median earnings Corpus Christi by education for persons 25 years of age & up (Census AFF/ACS): \$27,211 (\$36,380 male/ \$22,328 female)

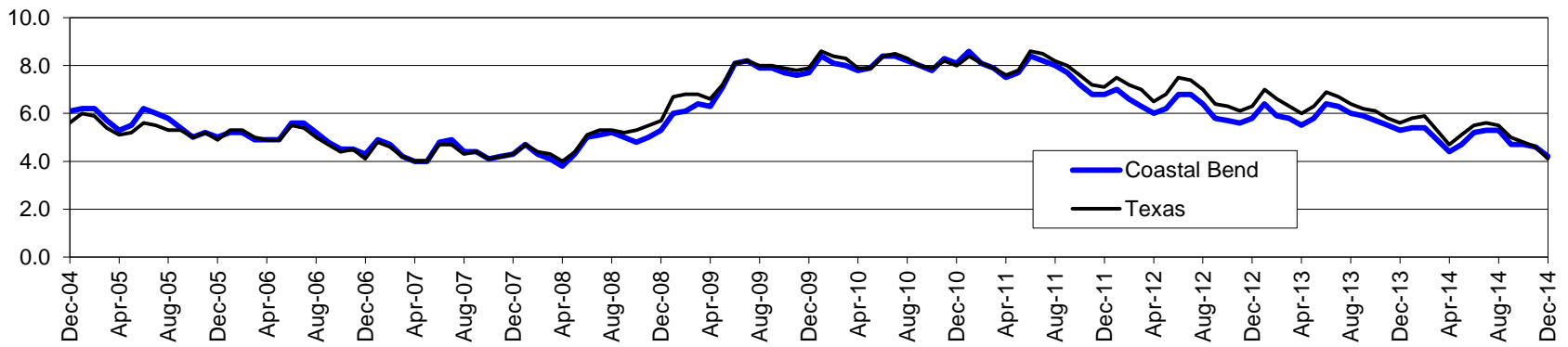
Less than High School	\$15,437	Some College or Associates	\$28,739	Graduate or Professional	\$56,681
High School & GED	\$26,818	Bachelor's	\$44,078		

Coastal Bend Workforce Development Area*

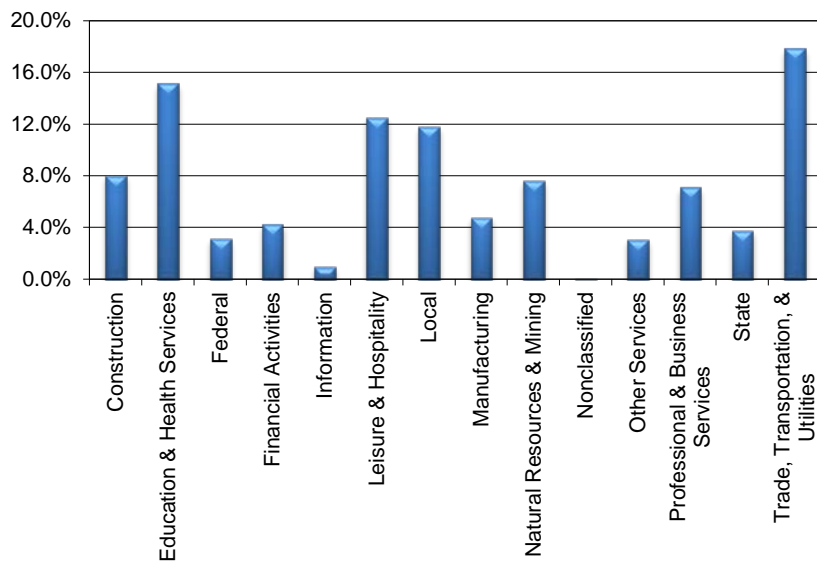
December 2014

Coastal Bend WDA					Texas				
	CLF	Employed	Unemployed	Rate		CLF	Employed	Unemployed	Rate
Dec-14	300,026	287,539	12,487	4.2	Dec-14	13,005,442	12,466,775	538,667	4.1
Nov-14	301,685	287,891	13,794	4.6	Nov-14	13,068,856	12,464,326	604,530	4.6
Dec-13	297,464	281,752	15,712	5.3	Dec-13	12,864,202	12,141,677	722,525	5.6

Historical Unemployment Rates



Coastal Bend WDA Industry Composition 2nd Quarter 2014



Total WDA Claims

Continued Claims for the Week of the 12th

	Dec-14	Nov-14	Dec-13	OTY
Continued	2,889	2,687	2,741	148

Texas Unemployment Insurance Claims

Continued Claims for the Week of the 12th

	Dec-14	Nov-14	Dec-13	OTY
Continued	105,335	101,927	124,041	-18,706

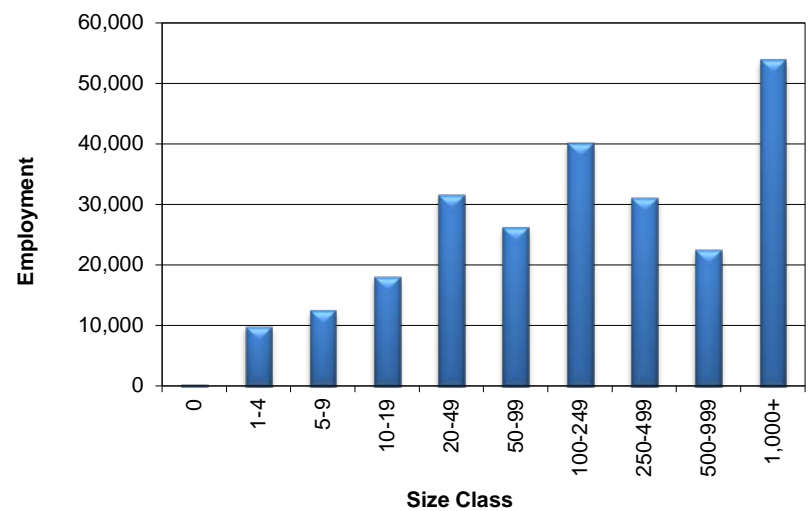
Coastal Bend WDA Average Weekly Wage

	Coastal Bend	Texas
2nd Quarter 2014	\$829.32	\$973.65
1st Quarter 2014	\$855.01	\$1,062.26
2nd Quarter 2013	\$801.84	\$944.12
Quarter Change	-\$25.69	-\$88.61
OTY Change	\$27.48	\$29.53

NAICS Covered Employment Quarterly Data 2nd Quarter 2014

SUPER SECTOR	Employment	Change	
		Quarter	Year
Construction	19,806	40	1,612
Education & Health Services	37,326	253	-1,100
Federal	7,784	16	-340
Financial Activities	10,417	307	425
Information	2,401	50	17
Leisure & Hospitality	30,874	1,855	1,053
Local	29,290	-77	144
Manufacturing	11,763	209	313
Natural Resources & Mining	18,815	265	76
Nonclassified	29	6	-16
Other Services	7,565	233	283
Professional & Business Services	17,536	191	-158
State	9,280	-123	-50
Trade, Transportation, & Utilities	44,119	402	1,398
TOTAL	247,005	3,627	3,657

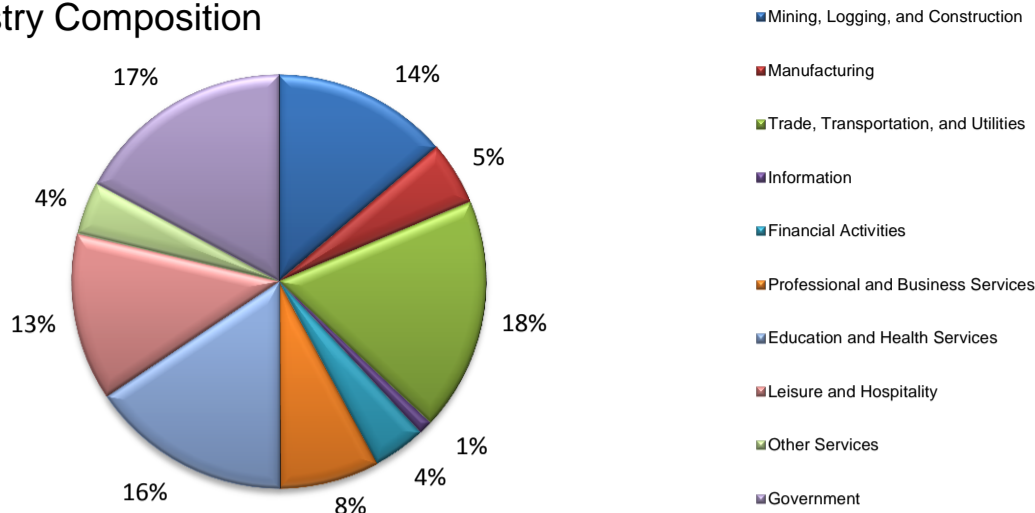
Size Class Employment Composition 2nd Quarter 2014



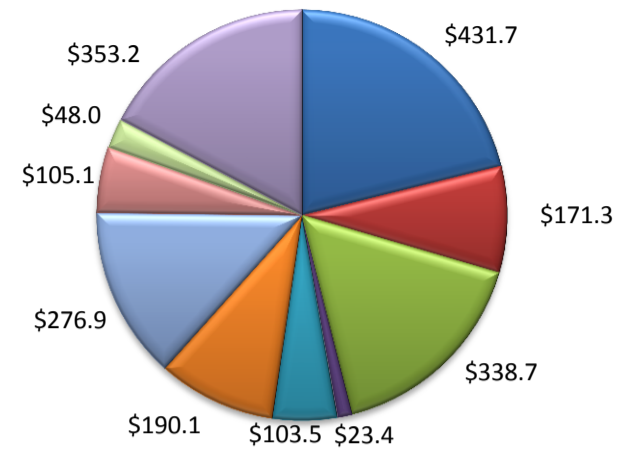
*Counties in WDA: Aransas, Bee, Brooks, Duval, Jim Wells, Kenedy, Kleberg, Live Oak, McMullen, Nueces, Refugio, & San Patricio

(Aransas, Nueces, San Patricio)

Industry Composition



Wages by Industry (in millions)
2nd Quarter 2014



Employment by Industry

	Dec-14	Nov-14	Dec-13	Monthly Change		Annual Change	
				Actual	%	Actual	%
Total Nonfarm	195,700	195,200	189,400	500	0.3%	6,300	3.3%
Mining, Logging, and Construction	26,900	27,200	24,300	-300	-1.1%	2,600	10.7%
Manufacturing	9,700	9,700	9,800	0	0.0%	-100	-1.0%
Trade, Transportation, and Utilities	35,700	34,800	34,700	900	2.6%	1,000	2.9%
Information	2,100	2,100	2,100	0	0.0%	0	0.0%
Financial Activities	8,100	8,000	7,900	100	1.3%	200	2.5%
Professional and Business Services	15,300	15,400	15,500	-100	-0.7%	-200	-1.3%
Education and Health Services	30,600	30,500	29,700	100	0.3%	900	3.0%
Leisure and Hospitality	25,600	25,400	23,700	200	0.8%	1,900	8.0%
Other Services	8,100	8,200	7,800	-100	-1.2%	300	3.9%
Government	33,600	33,900	33,900	-300	-0.9%	-300	-0.9%

Industry Size Class

Size Class	Employees per firm	Number of Firms	June 2014	
			Employment in Size Class	% Total Employment
9	1000+	18	41,641	22.0%
8	500-999	24	16,019	8.5%
7	250-499	59	19,792	10.5%
6	100-249	221	33,187	17.5%
5	50-99	315	21,781	11.5%
4	20-49	827	25,019	13.2%
3	10-19	1,065	14,469	7.6%
2	5-9	1,490	9,861	5.2%
1	1-4	3,637	7,564	4.0%
0	0	524	0	0.0%
Total		8,180	189,333	100.0%

Annual Growth Rate for Total Nonagricultural Employment



Unemployment Information (all estimates in thousands)

	Corpus Christi MSA				Texas (Actual)				United States (Actual)			
	C.L.F.	Emp.	Unemp.	Rate	C.L.F.	Emp.	Unemp.	Rate	C.L.F.	Emp.	Unemp.	Rate
Dec-14	221.1	211.5	9.6	4.3	13,005.5	12,466.8	538.7	4.1	155,521.0	147,190.0	8,331.0	5.4
Nov-14	222.2	211.7	10.5	4.7	13,068.8	12,464.3	604.5	4.6	156,297.0	147,666.0	8,630.0	5.5
Dec-13	218.0	206.0	12.0	5.5	12,864.2	12,141.7	722.5	5.6	154,408.0	144,423.0	9,984.0	6.5

Historical Unemployment Rates

