

Coastal Bend Workforce Area

Area	Area Type	Latest Monthly Data December 2012						Previous Monthly Data November 2012				Year Ago December 2011			
		Labor Force	Employment	Unemployment	Rate	M+-	Y+-	Labor Force	Employment	Unemployment	Rate	Labor Force	Employment	Unemployment	Rate
United States	Nation	154,904,000	143,060,000	11,844,000	7.6	0.2	-0.7	154,953,000	143,549,000	11,404,000	7.4	153,373,000	140,681,000	12,692,000	8.3
Texas	State	12,621,561	11,858,711	762,850	6.0	0.2	-1.1	12,628,725	11,891,358	737,367	5.8	12,493,959	11,606,912	887,047	7.1
Corpus Christi	MSA	218,420	206,077	12,343	5.7	0.3	-1.2	219,305	207,400	11,905	5.4	219,641	204,495	15,146	6.9
Coastal Bend	WDA	296,614	280,293	16,321	5.5	0.2	-1.2	297,206	281,498	15,708	5.3	294,111	274,355	19,756	6.7
Aransas	County	11,016	10,393	623	5.7	0.5	-1.9	11,030	10,460	570	5.2	11,158	10,314	844	7.6
Bee	County	12,835	11,982	853	6.6	0.2	-0.9	12,851	12,033	818	6.4	12,496	11,557	939	7.5
Brooks	County	3,389	3,164	225	6.6	0.6	-1.2	3,353	3,153	200	6.0	3,362	3,101	261	7.8
Duval	County	5,902	5,540	362	6.1	0.2	-1.6	5,859	5,515	344	5.9	5,669	5,230	439	7.7
Jim Wells	County	25,849	24,715	1,134	4.4	0.1	-1.3	25,650	24,559	1,091	4.3	23,765	22,413	1,352	5.7
Kenedy	County	262	253	9	3.4	0.7	-1.9	261	254	7	2.7	262	248	14	5.3
Kleberg	County	17,820	16,905	915	5.1	0.1	-1.0	17,892	16,996	896	5.0	17,633	16,563	1,070	6.1
Live Oak	County	6,904	6,637	267	3.9	0.2	-0.8	6,866	6,613	253	3.7	6,331	6,035	296	4.7
McMullen	County	720	705	15	2.1	-0.1	-1.2	718	702	16	2.2	570	551	19	3.3
Nueces	County	177,800	168,176	9,624	5.4	0.1	-1.2	178,671	169,256	9,415	5.3	178,708	166,885	11,823	6.6
Refugio	County	4,513	4,315	198	4.4	0.4	-0.6	4,451	4,273	178	4.0	4,382	4,162	220	5.0
San Patricio	County	29,604	27,508	2,096	7.1	0.6	-1.2	29,604	27,684	1,920	6.5	29,775	27,296	2,479	8.3

(M+-) Change in unemployment rate from last month (Increase) (Decrease)

(Y+-) Change in unemployment rate from last year (Increase) (Decrease)

- Earnings for all occupations Coastal Bend, expressed as hourly rate (TWC):

Coastal Bend	All Occupations-	Average \$17.28/hr.	Entry level \$8.30/hr.	Experienced workers \$21.77/hr.	Top 10% \$31.60/hr.
Texas	All Occupations-	Average \$20.30/hr.	Entry level \$9.62/hr.	Experienced workers \$ 25.68/hr.	Top 10% \$37.83/hr.

- Educational Attainment for population 25 years of age and older - Corpus Christi (Census American Fact Finder/American Community Survey):

Less than 9 th grade	9.3%	12 th grade & GED	26.7%	Associates degree	7.4%	Graduate or Professional degrees	7.0%
9 th thru 11 th grade	11.8%	Some College	24.7%	Bachelors degree	13.0%		

- Median earnings Corpus Christi by education for persons 25 years of age & up (Census AFF/ACS): \$27,211 (\$36,380 male/ \$22,328 female)

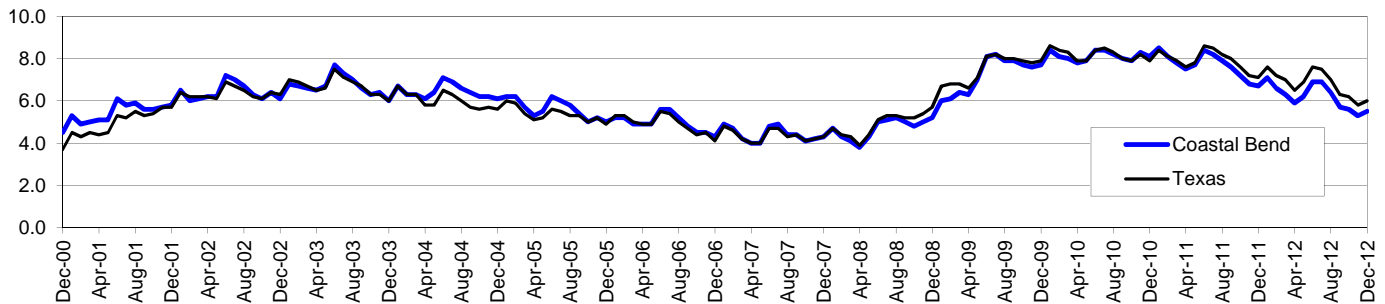
Less than High School	\$15,545	Some College or Associates	\$31,460	Graduate or Professional	\$54,717
High School & GED	\$23,028	Bachelor's	\$43,005		

Coastal Bend Workforce Development Area*

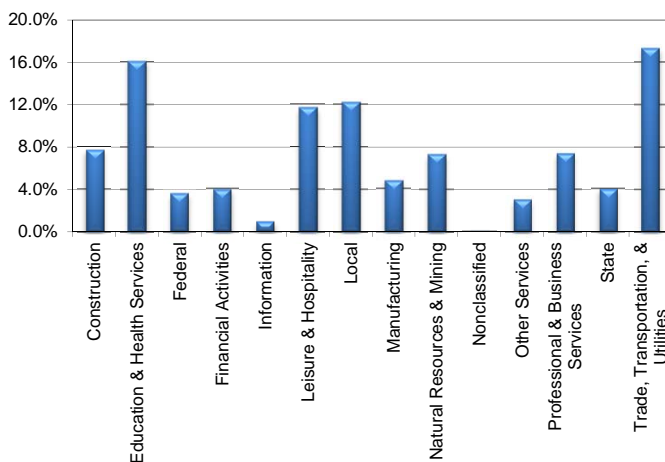
December 2012

Coastal Bend WDA					Texas				
	CLF	Employed	Unemployed	Rate		CLF	Employed	Unemployed	Rate
Dec-12	296,614	280,293	16,321	5.5	Dec-12	12,621,561	11,858,711	762,850	6.0
Nov-12	297,206	281,498	15,708	5.3	Nov-12	12,628,725	11,891,358	737,367	5.8
Dec-11	294,111	274,355	19,756	6.7	Dec-11	12,493,959	11,606,912	887,047	7.1

Historical Unemployment Rates



Coastal Bend WDA Industry Composition 2nd Quarter 2012



Total WDA Claims

Continued Claims for the Week of the 12th

	Dec-12	Nov-12	Dec-11	OTY
Continued	2,612	2,422	2,978	-366

Texas Unemployment Insurance Claims

Continued Claims for the Week of the 12th

	Dec-12	Nov-12	Dec-11	OTY
Continued	129,052	123,883	144,253	-15,201

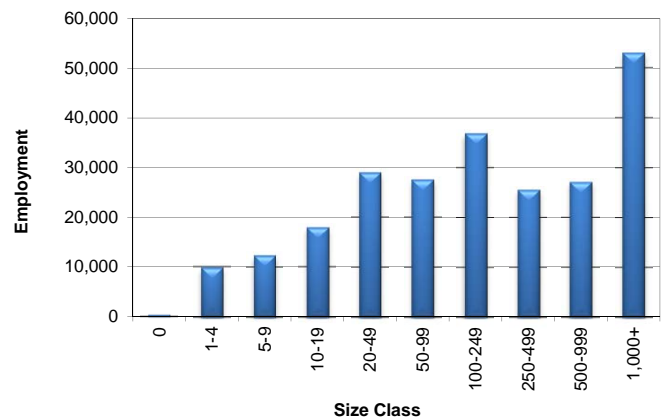
Coastal Bend WDA Average Weekly Wage

	Coastal Bend	Texas
2nd Quarter 2012	\$792.17	\$922.44
1st Quarter 2012	\$811.48	\$1,012.59
2nd Quarter 2011	\$749.09	\$899.44
Quarter Change	-\$19.31	-\$90.15
OTY Change	\$43.08	\$23.00

NAICS Covered Employment Quarterly Data 2nd Quarter 2012

SUPER SECTOR	Employment	Change	
		Quarter	Year
Construction	18,341	1,013	1,772
Education & Health Services	38,454	523	-1,321
Federal	8,613	39	41
Financial Activities	9,455	169	251
Information	2,304	8	2
Leisure & Hospitality	27,972	1,915	1,652
Local	29,177	219	-919
Manufacturing	11,401	205	788
Natural Resources & Mining	17,500	1,008	3,559
Nonclassified	25	10	12
Other Services	7,163	257	697
Professional & Business Services	17,642	323	511
State	9,470	-244	-750
Trade, Transportation, & Utilities	41,444	429	2,206
TOTAL	238,961	5,874	8,501

Size Class Employment Composition 2nd Quarter 2012

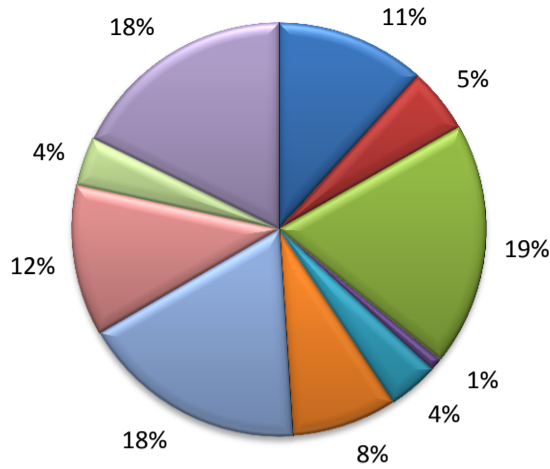


*Counties in WDA: Aransas, Bee, Brooks, Duval, Jim Wells, Kenedy, Kleberg, Live Oak, McMullen, Nueces, Refugio, & San Patricio

Available at <http://www.tracer2.com/>

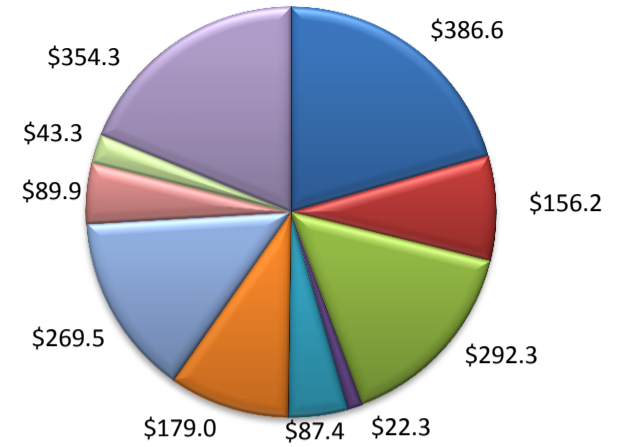
(Aransas, Nueces, San Patricio)

Industry Composition



- Mining, Logging, and Construction
- Manufacturing
- Trade, Transportation, and Utilities
- Information
- Financial Activities
- Professional and Business Services
- Education and Health Services
- Leisure and Hospitality
- Other Services
- Government

Wages by Industry (in millions)
2nd Quarter 2012



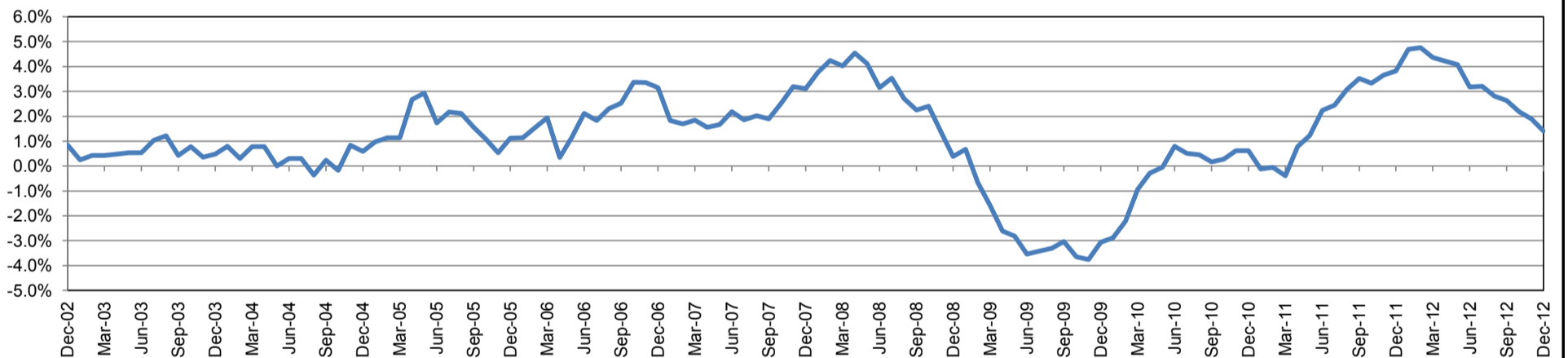
Employment by Industry

	Dec-12	Nov-12	Dec-11	Monthly Change		Annual Change	
				Actual	%	Actual	%
Total Nonfarm	187,500	187,900	184,900	-400	-0.2%	2,600	1.4%
Mining, Logging, and Construction	21,900	22,000	21,000	-100	-0.5%	900	4.3%
Manufacturing	9,600	9,500	9,600	100	1.1%	0	0.0%
Trade, Transportation, and Utilities	35,600	35,600	35,400	0	0.0%	200	0.6%
Information	1,900	1,900	1,900	0	0.0%	0	0.0%
Financial Activities	7,400	7,400	7,400	0	0.0%	0	0.0%
Professional and Business Services	15,400	15,500	15,200	-100	-0.7%	200	1.3%
Education and Health Services	33,200	33,200	32,100	0	0.0%	1,100	3.4%
Leisure and Hospitality	22,000	22,100	21,100	-100	-0.5%	900	4.3%
Other Services	7,200	7,200	7,000	0	0.0%	200	2.9%
Government	33,300	33,500	34,200	-200	-0.6%	-900	-2.6%

Industry Size Class

Size Class	Employees per firm	Number of Firms	June 2012		
			Employment in Size Class	% Total Employment	
9	1000+	15	38,463	21.1%	
8	500-999	30	21,303	11.7%	
7	250-499	47	15,121	8.3%	
6	100-249	197	30,000	16.5%	
5	50-99	317	22,492	12.3%	
4	20-49	757	23,130	12.7%	
3	10-19	1,048	14,325	7.9%	
2	5-9	1,484	9,791	5.4%	
1	1-4	3,615	7,552	4.1%	
0	0	493	0	0.0%	
Total			8,003	182,177	100.0%

Annual Growth Rate for Total Nonagricultural Employment



Unemployment Information (all estimates in thousands)

	Corpus Christi MSA				Texas (Actual)				United States (Actual)			
	C.L.F.	Emp.	Unemp.	Rate	C.L.F.	Emp.	Unemp.	Rate	C.L.F.	Emp.	Unemp.	Rate
Dec-12	218.4	206.1	12.3	5.7	12,621.6	11,858.7	762.9	6.0	154,904.0	143,060.0	11,844.0	7.6
Nov-12	219.3	207.4	11.9	5.4	12,628.8	11,891.4	737.4	5.8	154,953.0	143,549.0	11,404.0	7.4
Dec-11	219.6	204.5	15.1	6.9	12,493.9	11,606.9	887.0	7.1	153,373.0	140,681.0	12,692.0	8.3

Historical Unemployment Rates

