

Coastal Bend Workforce Area

(Not Seasonally Adjusted Unemployment Rates by WDA, MSA, & County)

Area	Area Type	Latest Monthly Data August 2014						Previous Monthly Data July 2014				Year Ago August 2013			
		Labor Force	Employment	Unemployment	Rate	M+-	Y+-	Labor Force	Employment	Unemployment	Rate	Labor Force	Employment	Unemployment	Rate
United States	Nation	156,434,000	146,647,000	9,787,000	6.3	-0.2	-1.0	157,573,000	147,265,000	10,307,000	6.5	155,971,000	144,509,000	11,462,000	7.3
Texas	State	13,015,760	12,295,402	720,358	5.5	-0.1	-0.9	13,079,296	12,349,422	729,874	5.6	12,832,523	12,010,506	822,017	6.4
Corpus Christi	MSA	221,004	209,170	11,834	5.4	0.0	-0.7	220,688	208,706	11,982	5.4	218,578	205,160	13,418	6.1
Coastal Bend	WDA	300,249	284,489	15,760	5.2	-0.1	-0.8	300,216	284,203	16,013	5.3	296,794	279,010	17,784	6.0
Aransas	County	11,211	10,627	584	5.2	-0.2	-0.7	11,208	10,604	604	5.4	11,079	10,424	655	5.9
Bee	County	13,506	12,702	804	6.0	-0.2	-0.6	13,618	12,777	841	6.2	13,666	12,770	896	6.6
Brooks	County	3,466	3,204	262	7.6	0.1	0.3	3,426	3,168	258	7.5	3,418	3,168	250	7.3
Duval	County	6,179	5,827	352	5.7	0.1	-0.4	6,112	5,770	342	5.6	5,990	5,623	367	6.1
Jim Wells	County	24,675	23,549	1,126	4.6	-0.2	-0.7	24,743	23,555	1,188	4.8	24,671	23,368	1,303	5.3
Kenedy	County	276	269	7	2.5	-0.4	-0.5	278	270	8	2.9	266	258	8	3.0
Kleberg	County	18,232	17,306	926	5.1	0.0	-0.8	18,345	17,404	941	5.1	17,660	16,617	1,043	5.9
Live Oak	County	7,238	6,978	260	3.6	0.0	-0.4	7,246	6,985	261	3.6	7,137	6,855	282	4.0
McMullen	County	928	908	20	2.2	0.3	-1.1	933	915	18	1.9	793	767	26	3.3
Nueces	County	180,101	170,860	9,241	5.1	-0.1	-0.8	179,832	170,481	9,351	5.2	178,082	167,585	10,497	5.9
Refugio	County	4,746	4,577	169	3.6	0.0	-0.5	4,827	4,653	174	3.6	4,614	4,423	191	4.1
San Patricio	County	29,691	27,682	2,009	6.8	0.0	-0.9	29,648	27,621	2,027	6.8	29,418	27,152	2,266	7.7

(M+-) Change in unemployment rate from last month (Increase) (Decrease)

(Y+-) Change in unemployment rate from last year (Increase) (Decrease)

- Earnings for all occupations Coastal Bend, expressed as hourly rate (TWC):

Coastal Bend	All Occupations-	Average \$18.35/hr.	Entry level \$8.58/hr.	Experienced workers \$23.24/hr.	Top 10% \$33.56/hr.
Texas	All Occupations-	Average \$20.97/hr.	Entry level \$8.88/hr.	Experienced workers \$ 27.02/hr.	Top 10% \$39.64/hr.

- Educational Attainment for population 25 years of age and older - Corpus Christi (Census American Fact Finder/American Community Survey):

Less than 9 th grade	8.7%	12 th grade & GED	27.7%	Associates degree	7.0%	Graduate or Professional degrees	8.4%
9 th thru 11 th grade	9.3%	Some College	25.1%	Bachelors degree	13.8%		

- Median earnings Corpus Christi by education for persons 25 years of age & up (Census AFF/ACS): **\$27,211** (\$36,380 male/ \$22,328 female)

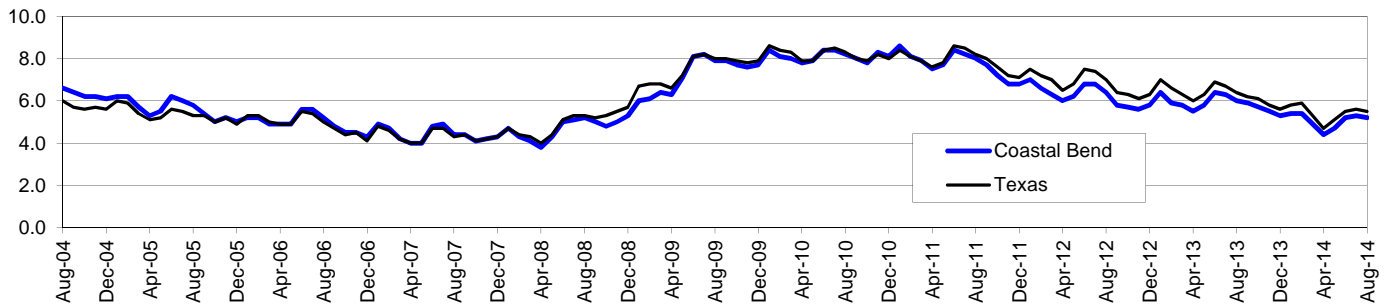
Less than High School	\$15,437	Some College or Associates	\$28,739	Graduate or Professional	\$56,681
High School & GED	\$26,818	Bachelor's	\$44,078		

Coastal Bend Workforce Development Area*

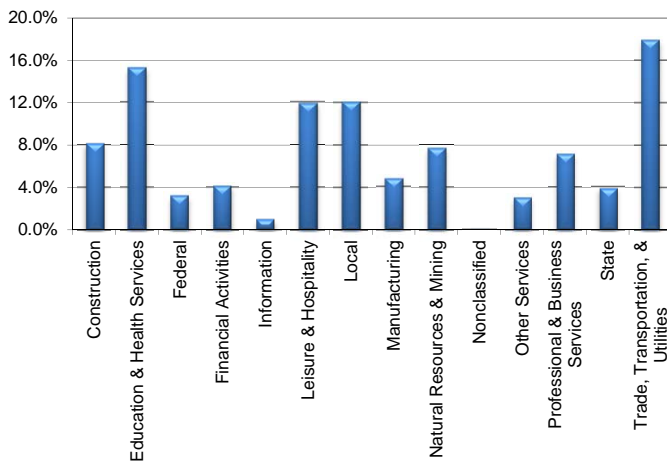
August 2014

Coastal Bend WDA					Texas				
	CLF	Employed	Unemployed	Rate		CLF	Employed	Unemployed	Rate
Aug-14	300,249	284,489	15,760	5.2	Aug-14	13,015,760	12,295,402	720,358	5.5
Jul-14	300,216	284,203	16,013	5.3	Jul-14	13,079,296	12,349,422	729,874	5.6
Aug-13	296,794	279,010	17,784	6.0	Aug-13	12,832,523	12,010,506	822,017	6.4

Historical Unemployment Rates



Coastal Bend WDA Industry Composition 1st Quarter 2014



Total WDA Claims

Continued Claims for the Week of the 12th

	Aug-14	Jul-14	Aug-13	OTY
Continued	2,540	2,796	2,879	-339

Texas Unemployment Insurance Claims

Continued Claims for the Week of the 12th

	Aug-14	Jul-14	Aug-13	OTY
Continued	116,651	129,418	132,541	-15,890

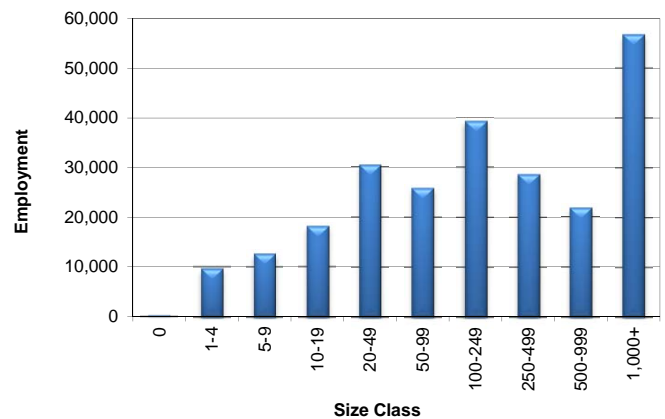
Coastal Bend WDA Average Weekly Wage

	Coastal Bend	Texas
1st Quarter 2014	\$855.76	\$1,062.65
4th Quarter 2013	\$860.03	\$1,026.57
1st Quarter 2013	\$820.96	\$1,015.27
Quarter Change	-\$4.27	\$36.08
OTY Change	\$34.80	\$47.38

NAICS Covered Employment Quarterly Data 1st Quarter 2014

SUPER SECTOR	Employment	Change	
		Quarter	Year
Construction	19,785	169	1,731
Education & Health Services	37,068	-999	-1,121
Federal	7,768	-235	-401
Financial Activities	10,099	13	265
Information	2,351	-45	19
Leisure & Hospitality	28,897	-102	466
Local	29,375	-73	308
Manufacturing	11,573	24	137
Natural Resources & Mining	18,671	-186	157
Nonclassified	37	-5	-6
Other Services	7,312	46	272
Professional & Business Services	17,300	-270	-361
State	9,403	-52	-162
Trade, Transportation, & Utilities	43,601	-209	1,891
TOTAL	243,240	-1,924	3,195

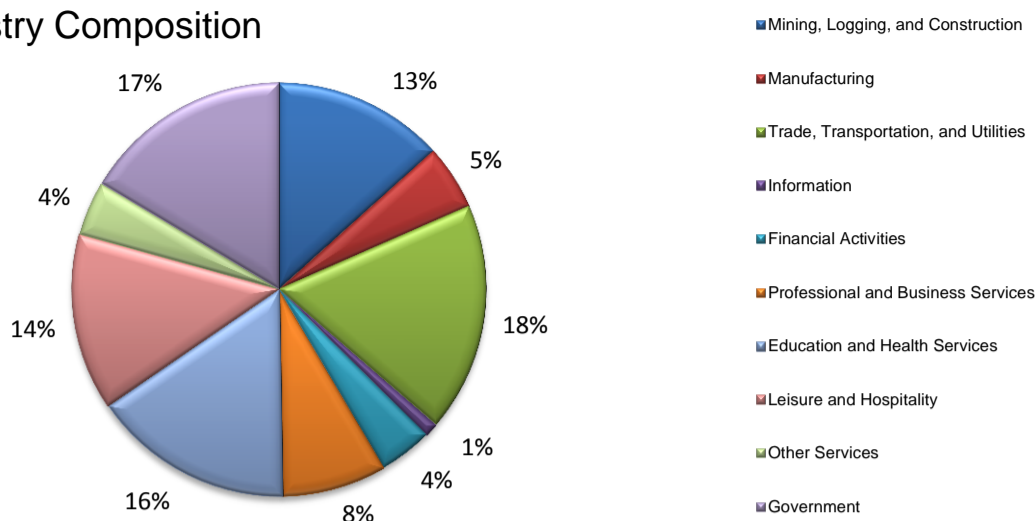
Size Class Employment Composition 1st Quarter 2014



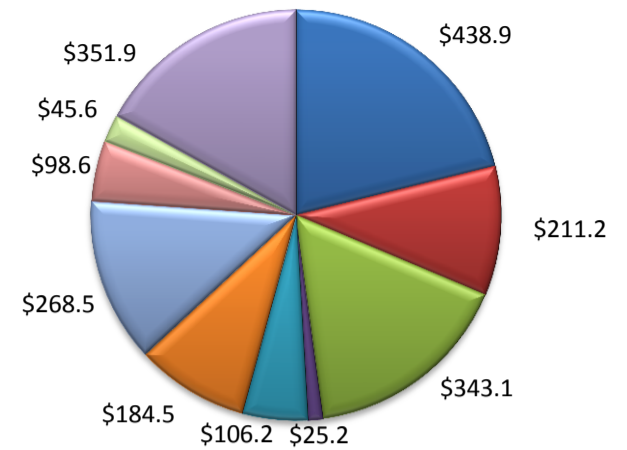
*Counties in WDA: Aransas, Bee, Brooks, Duval, Jim Wells, Kenedy, Kleberg, Live Oak, McMullen, Nueces, Refugio, & San Patricio

(Aransas, Nueces, San Patricio)

Industry Composition



Wages by Industry (in millions)
1st Quarter 2014



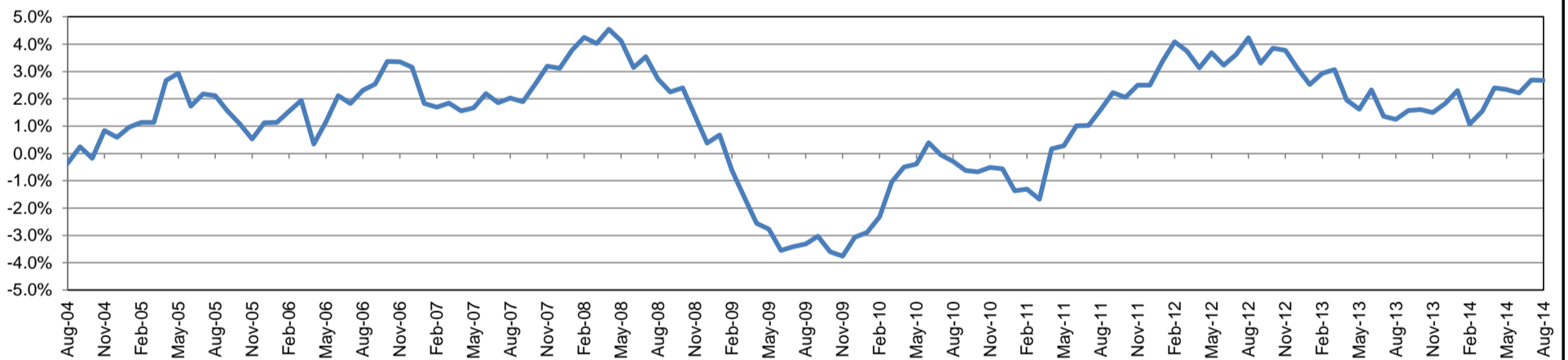
Employment by Industry

	Aug-14	Jul-14	Aug-13	Monthly Change		Annual Change	
				Actual	%	Actual	%
Total Nonfarm	192,200	190,900	187,200	1,300	0.7%	5,000	2.7%
Mining, Logging, and Construction	25,600	25,300	24,100	300	1.2%	1,500	6.2%
Manufacturing	9,800	9,800	9,800	0	0.0%	0	0.0%
Trade, Transportation, and Utilities	34,400	34,500	34,000	-100	-0.3%	400	1.2%
Information	2,100	2,100	2,100	0	0.0%	0	0.0%
Financial Activities	8,000	8,100	7,900	-100	-1.2%	100	1.3%
Professional and Business Services	15,700	15,300	15,600	400	2.6%	100	0.6%
Education and Health Services	30,200	30,100	29,700	100	0.3%	500	1.7%
Leisure and Hospitality	26,600	26,100	24,800	500	1.9%	1,800	7.3%
Other Services	8,200	8,300	7,800	-100	-1.2%	400	5.1%
Government	31,600	31,300	31,400	300	1.0%	200	0.6%

Industry Size Class March 2014

Size Class	Employees per firm	Number of Firms	Employment in Size Class	% Total Employment
9	1000+	20	43,256	23.1%
8	500-999	25	16,476	8.8%
7	250-499	53	18,163	9.7%
6	100-249	215	32,105	17.1%
5	50-99	309	21,502	11.5%
4	20-49	799	24,093	12.9%
3	10-19	1,059	14,392	7.7%
2	5-9	1,528	10,103	5.4%
1	1-4	3,589	7,404	3.9%
0	0	571	0	0.0%
Total		8,168	187,494	100.0%

Annual Growth Rate for Total Nonagricultural Employment



Unemployment Information (all estimates in thousands)

	Corpus Christi MSA				Texas (Actual)				United States (Actual)			
	C.L.F.	Emp.	Unemp.	Rate	C.L.F.	Emp.	Unemp.	Rate	C.L.F.	Emp.	Unemp.	Rate
Aug-14	221.0	209.2	11.8	5.4	13,015.8	12,295.4	720.4	5.5	156,434.0	146,647.0	9,787.0	6.3
Jul-14	220.7	208.7	12.0	5.4	13,079.3	12,349.4	729.9	5.6	157,573.0	147,265.0	10,307.0	6.5
Aug-13	218.6	205.2	13.4	6.1	12,832.5	12,010.5	822.0	6.4	155,971.0	144,509.0	11,462.0	7.3

Historical Unemployment Rates

