

Coastal Bend Workforce Area

(Not Seasonally Adjusted Unemployment Rates by WDA, MSA, & County)

Area	Area Type	Latest Monthly Data August 2013						Previous Monthly Data July 2013				Year Ago August 2012			
		Labor Force	Employment	Unemployment	Rate	M+-	Y+-	Labor Force	Employment	Unemployment	Rate	Labor Force	Employment	Unemployment	Rate
United States	Nation	155,971,000	144,509,000	11,462,000	7.3	-0.4	-0.9	157,196,000	145,113,000	12,083,000	7.7	155,255,000	142,558,000	12,696,000	8.2
Texas	State	12,780,824	11,981,929	798,895	6.3	-0.4	-0.6	12,868,256	12,010,823	857,433	6.7	12,572,856	11,700,357	872,499	6.9
Corpus Christi	MSA	221,966	208,921	13,045	5.9	-0.4	-0.6	222,930	208,913	14,017	6.3	217,074	203,034	14,040	6.5
Coastal Bend	WDA	300,723	283,382	17,341	5.8	-0.4	-0.5	302,585	283,844	18,741	6.2	294,007	275,493	18,514	6.3
Aransas	County	11,187	10,554	633	5.7	-0.4	-0.5	11,242	10,554	688	6.1	10,934	10,257	677	6.2
Bee	County	13,197	12,323	874	6.6	-0.5	-0.5	13,357	12,403	954	7.1	12,751	11,851	900	7.1
Brooks	County	3,383	3,134	249	7.4	-1.2	-0.5	3,483	3,182	301	8.6	3,364	3,098	266	7.9
Duval	County	6,070	5,709	361	5.9	-0.7	-0.7	6,197	5,785	412	6.6	5,910	5,518	392	6.6
Jim Wells	County	25,395	24,122	1,273	5.0	-0.4	-0.1	25,584	24,210	1,374	5.4	25,240	23,952	1,288	5.1
Kenedy	County	267	259	8	3.0	-0.3	-2.2	271	262	9	3.3	267	253	14	5.2
Kleberg	County	17,637	16,598	1,039	5.9	-0.4	-0.4	17,890	16,762	1,128	6.3	17,293	16,197	1,096	6.3
Live Oak	County	7,456	7,180	276	3.7	-0.5	-0.4	7,421	7,110	311	4.2	7,003	6,715	288	4.1
McMullen	County	735	709	26	3.5	0.4	0.8	752	729	23	3.1	637	620	17	2.7
Nueces	County	180,932	170,725	10,207	5.6	-0.4	-0.7	181,684	170,718	10,966	6.0	177,084	165,914	11,170	6.3
Refugio	County	4,616	4,426	190	4.1	-0.4	-0.7	4,700	4,488	212	4.5	4,467	4,254	213	4.8
San Patricio	County	29,848	27,643	2,205	7.4	-0.5	-0.1	30,004	27,641	2,363	7.9	29,057	26,864	2,193	7.5

(M+-) Change in unemployment rate from last month (Increase) (Decrease)

(Y+-) Change in unemployment rate from last year (Increase) (Decrease)

- Earnings for all occupations Coastal Bend, expressed as hourly rate (TWC):

Coastal Bend	All Occupations-	Average \$17.28/hr.	Entry level \$8.30/hr.	Experienced workers \$21.77/hr.	Top 10% \$31.60/hr.
Texas	All Occupations-	Average \$20.30/hr.	Entry level \$9.62/hr.	Experienced workers \$ 25.68/hr.	Top 10% \$37.83/hr.

- Educational Attainment for population 25 years of age and older - Corpus Christi (Census American Fact Finder/American Community Survey):

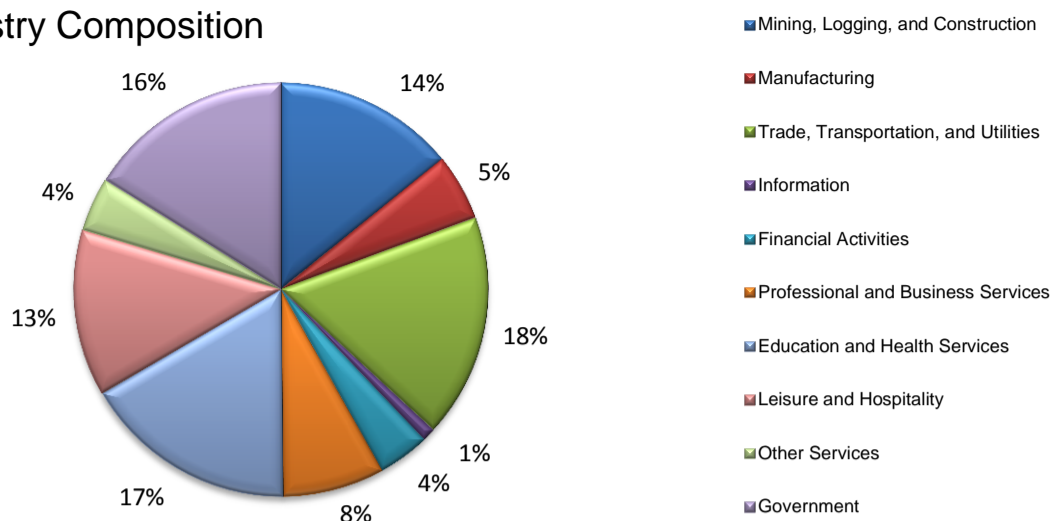
Less than 9 th grade	9.3%	12 th grade & GED	26.7%	Associates degree	7.4%	Graduate or Professional degrees	7.0%
9 th thru 11 th grade	11.8%	Some College	24.7%	Bachelors degree	13.0%		

- Median earnings Corpus Christi by education for persons 25 years of age & up (Census AFF/ACS): \$27,211 (\$36,380 male/ \$22,328 female)

Less than High School	\$15,545	Some College or Associates	\$31,460	Graduate or Professional	\$54,717
High School & GED	\$23,028	Bachelor's	\$43,005		

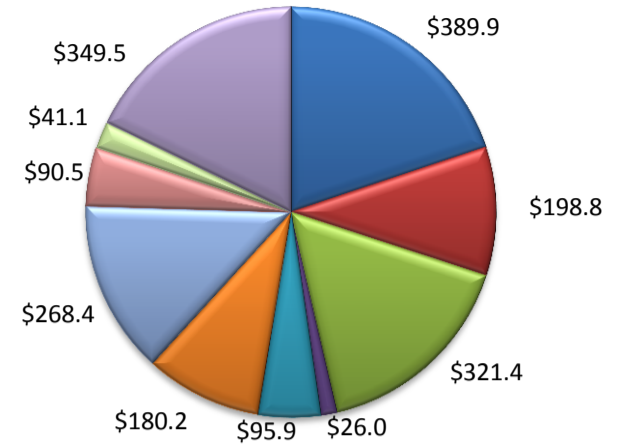
(Aransas, Nueces, San Patricio)

Industry Composition



Wages by Industry (in millions)

1st Quarter 2013



Employment by Industry

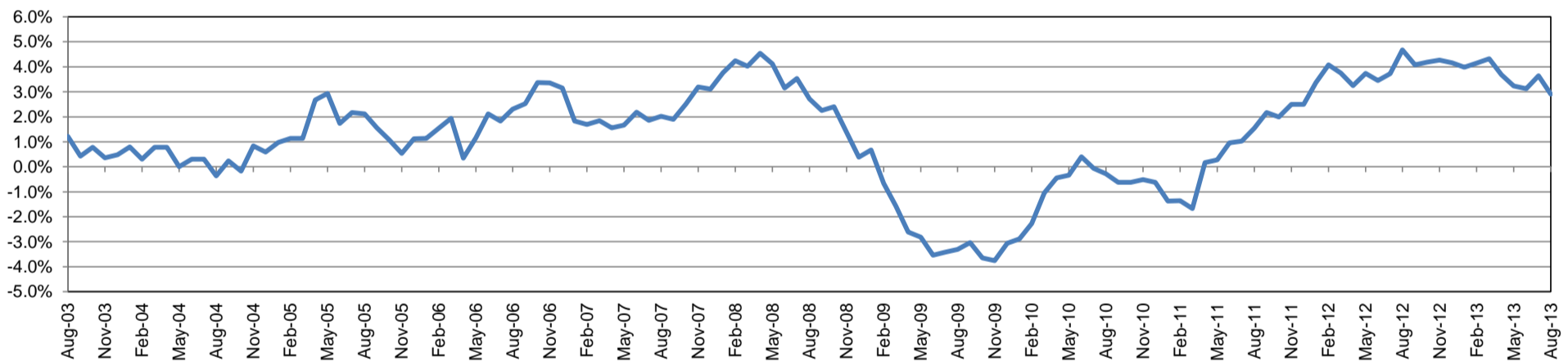
	Aug-13	Jul-13	Aug-12	Monthly Change		Annual Change	
				Actual	%	Actual	%
Total Nonfarm	191,000	190,300	185,600	700	0.4%	5,400	2.9%
Mining, Logging, and Construction	27,100	26,300	23,500	800	3.0%	3,600	15.3%
Manufacturing	9,900	9,800	10,000	100	1.0%	-100	-1.0%
Trade, Transportation, and Utilities	33,400	33,400	32,800	0	0.0%	600	1.8%
Information	2,000	2,000	2,100	0	0.0%	-100	-4.8%
Financial Activities	7,700	7,700	7,700	0	0.0%	0	0.0%
Professional and Business Services	15,100	14,900	15,400	200	1.3%	-300	-2.0%
Education and Health Services	32,000	31,800	31,000	200	0.6%	1,000	3.2%
Leisure and Hospitality	24,900	25,300	23,700	-400	-1.6%	1,200	5.1%
Other Services	8,100	8,200	7,800	-100	-1.2%	300	3.9%
Government	30,800	30,900	31,600	-100	-0.3%	-800	-2.5%

Industry Size Class

March 2013

Size Class	Employees per firm	Number of Firms	Employment in Size Class	% Total Employment
9	1000+	18	42,444	22.9%
8	500-999	26	17,887	9.7%
7	250-499	57	18,421	10.0%
6	100-249	189	28,323	15.3%
5	50-99	309	21,908	11.8%
4	20-49	800	24,427	13.2%
3	10-19	1,048	14,179	7.7%
2	5-9	1,506	9,949	5.4%
1	1-4	3,550	7,474	4.0%
0	0	558	0	0.0%
Total		8,061	185,012	100.0%

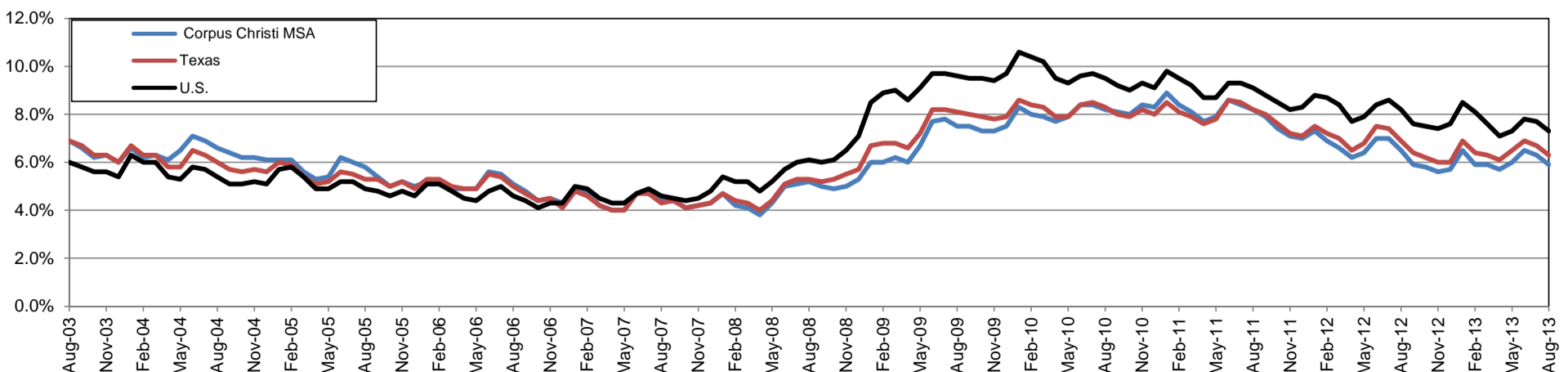
Annual Growth Rate for Total Nonagricultural Employment



Unemployment Information (all estimates in thousands)

	Corpus Christi MSA				Texas (Actual)				United States (Actual)			
	C.L.F.	Emp.	Unemp.	Rate	C.L.F.	Emp.	Unemp.	Rate	C.L.F.	Emp.	Unemp.	Rate
Aug-13	221.9	208.9	13.0	5.9	12,780.8	11,981.9	798.9	6.3	155,971.0	144,509.0	11,462.0	7.3
Jul-13	222.9	208.9	14.0	6.3	12,868.2	12,010.8	857.4	6.7	157,196.0	145,113.0	12,083.0	7.7
Aug-12	217.0	203.0	14.0	6.5	12,572.9	11,700.4	872.5	6.9	155,255.0	142,558.0	12,696.0	8.2

Historical Unemployment Rates

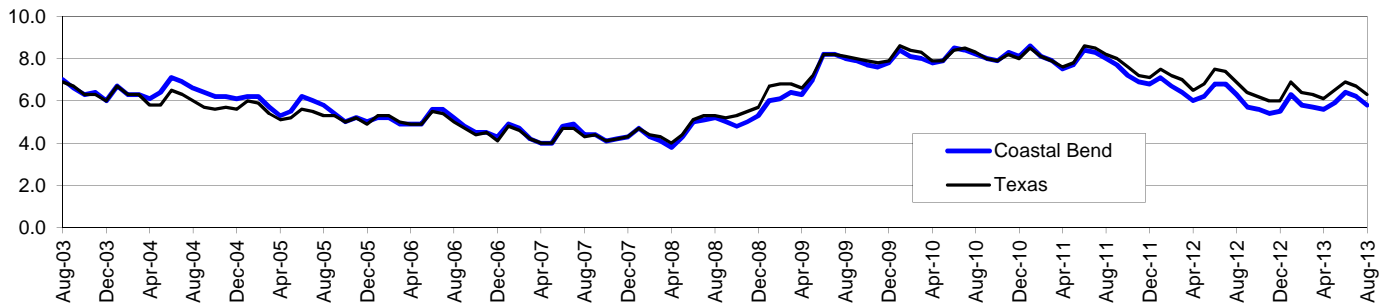


Coastal Bend Workforce Development Area*

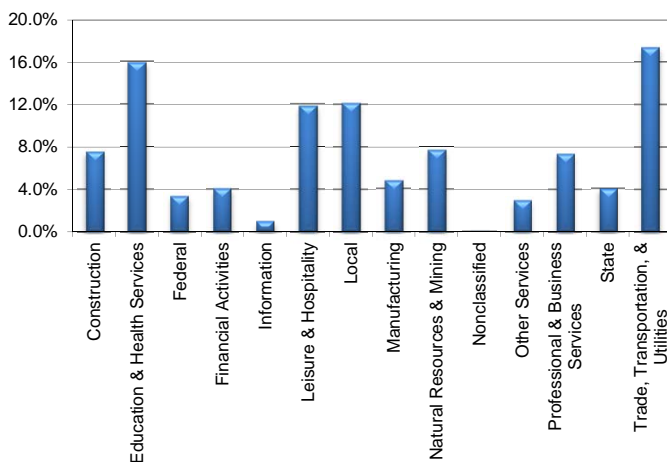
August 2013

Coastal Bend WDA					Texas				
	CLF	Employed	Unemployed	Rate		CLF	Employed	Unemployed	Rate
Aug-13	300,723	283,382	17,341	5.8	Aug-13	12,780,824	11,981,929	798,895	6.3
Jul-13	302,585	283,844	18,741	6.2	Jul-13	12,868,256	12,010,823	857,433	6.7
Aug-12	294,007	275,493	18,514	6.3	Aug-12	12,572,856	11,700,357	872,499	6.9

Historical Unemployment Rates



Coastal Bend WDA Industry Composition 1st Quarter 2013



Total WDA Claims

Continued Claims for the Week of the 12th

	Aug-13	Jul-13	Aug-12	OTY
Continued	2,857	3,096	2,519	338

Texas Unemployment Insurance Claims

Continued Claims for the Week of the 12th

	Aug-13	Jul-13	Aug-12	OTY
Continued	131,232	140,477	135,191	-3,959

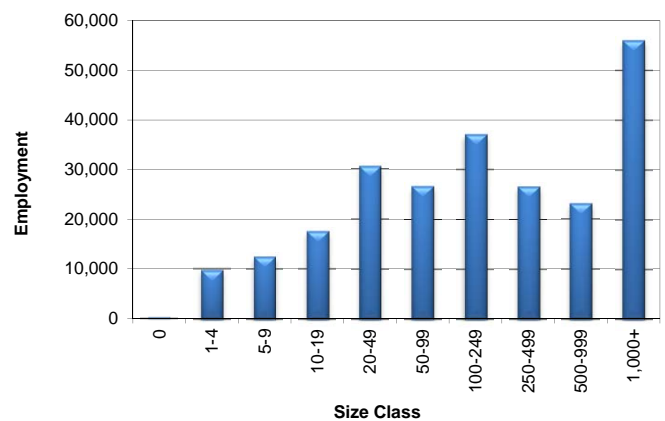
Coastal Bend WDA Average Weekly Wage

	Coastal Bend	Texas
1st Quarter 2013	\$821.09	\$1,015.49
4th Quarter 2012	\$865.44	\$1,027.11
1st Quarter 2012	\$811.05	\$1,012.32
Quarter Change	-\$44.35	-\$11.62
OTY Change	\$10.04	\$3.17

NAICS Covered Employment Quarterly Data 1st Quarter 2013

SUPER SECTOR	Employment	Change	
		Quarter	Year
Construction	18,056	45	726
Education & Health Services	38,154	-495	223
Federal	8,109	-449	-465
Financial Activities	9,820	180	534
Information	2,322	-16	26
Leisure & Hospitality	28,354	818	2,221
Local	29,070	-122	112
Manufacturing	11,436	14	239
Natural Resources & Mining	18,467	-69	1,974
Nonclassified	51	5	40
Other Services	7,027	-190	121
Professional & Business Services	17,649	166	324
State	9,568	-191	-145
Trade, Transportation, & Utilities	41,703	-842	755
TOTAL	239,786	-1,146	6,685

Size Class Employment Composition 1st Quarter 2013



*Counties in WDA: Aransas, Bee, Brooks, Duval, Jim Wells, Kenedy, Kleberg, Live Oak, McMullen, Nueces, Refugio, & San Patricio