

Coastal Bend Workforce Area

Area	Area Type	Latest Monthly Data April 2012						Previous Monthly Data March 2012				Year Ago April 2011			
		Labor Force	Employment	Unemployment	Rate	M+-	Y+-	Labor Force	Employment	Unemployment	Rate	Labor Force	Employment	Unemployment	Rate
United States	Nation	153,905,000	141,995,000	11,910,000	7.7	-0.7	-1.0	154,316,000	141,412,000	12,904,000	8.4	152,898,000	139,661,000	13,237,000	8.7
Texas	State	12,547,852	11,733,325	814,527	6.5	-0.5	-1.1	12,531,173	11,655,250	875,923	7.0	12,408,713	11,466,248	942,465	7.6
Coastal Bend	WDA	297,445	279,849	17,596	5.9	-0.4	-1.6	295,222	276,491	18,731	6.3	289,085	267,497	21,588	7.5
Corpus Christi	MSA	221,800	208,359	13,441	6.1	-0.4	-1.6	220,430	206,128	14,302	6.5	215,548	199,003	16,545	7.7
Aransas	County	11,121	10,508	613	5.5	-0.7	-1.9	11,081	10,396	685	6.2	10,844	10,037	807	7.4
Bee	County	12,668	11,804	864	6.8	-0.4	-1.5	12,713	11,803	910	7.2	12,545	11,504	1,041	8.3
Brooks	County	3,369	3,140	229	6.8	-0.7	-1.2	3,347	3,097	250	7.5	3,388	3,118	270	8.0
Duval	County	5,642	5,247	395	7.0	-0.6	-1.8	5,593	5,169	424	7.6	5,558	5,068	490	8.8
Jim Wells	County	24,116	22,922	1,194	5.0	-0.3	-1.5	23,561	22,303	1,258	5.3	23,231	21,721	1,510	6.5
Kenedy	County	263	256	7	2.7	-0.4	-0.4	259	251	8	3.1	256	248	8	3.1
Kleberg	County	18,056	17,086	970	5.4	-0.5	-1.0	17,853	16,799	1,054	5.9	17,700	16,572	1,128	6.4
Live Oak	County	6,424	6,148	276	4.3	-0.3	-1.2	6,404	6,112	292	4.6	5,915	5,590	325	5.5
McMullen	County	662	646	16	2.4	-0.5	-1.1	617	599	18	2.9	570	550	20	3.5
Nueces	County	180,786	170,038	10,748	5.9	-0.4	-1.6	179,567	168,218	11,349	6.3	175,502	162,403	13,099	7.5
Refugio	County	4,446	4,242	204	4.6	-0.2	-1.1	4,445	4,230	215	4.8	4,373	4,123	250	5.7
San Patricio	County	29,892	27,812	2,080	7.0	-0.6	-2.0	29,782	27,514	2,268	7.6	29,203	26,563	2,640	9.0

(M+-) Change in unemployment rate from last month (Increase) (Decrease)

(Y+-) Change in unemployment rate from last year (Increase) (Decrease)

- Earnings for all occupations Coastal Bend, expressed as hourly rate (TWC):

Coastal Bend	All Occupations-	Average \$17.28/hr.	Entry level \$8.30/hr.	Experienced workers \$21.77/hr.	Top 10% \$31.60/hr.
Texas	All Occupations-	Average \$20.30/hr.	Entry level \$9.62/hr.	Experienced workers \$ 25.68/hr.	Top 10% \$37.83/hr.

- Educational Attainment for population 25 years of age and older - Corpus Christi (Census American Fact Finder/American Community Survey):

Less than 9 th grade	9.3%	12 th grade & GED	26.7%	Associates degree	7.4%	Graduate or Professional degrees	7.0%
9 th thru 11 th grade	11.8%	Some College	24.7%	Bachelors degree	13.0%		

- Median earnings Corpus Christi by education for persons 25 years of age & up (Census AFF/ACS): **\$27,211** (\$36,380 male/ \$22,328 female)

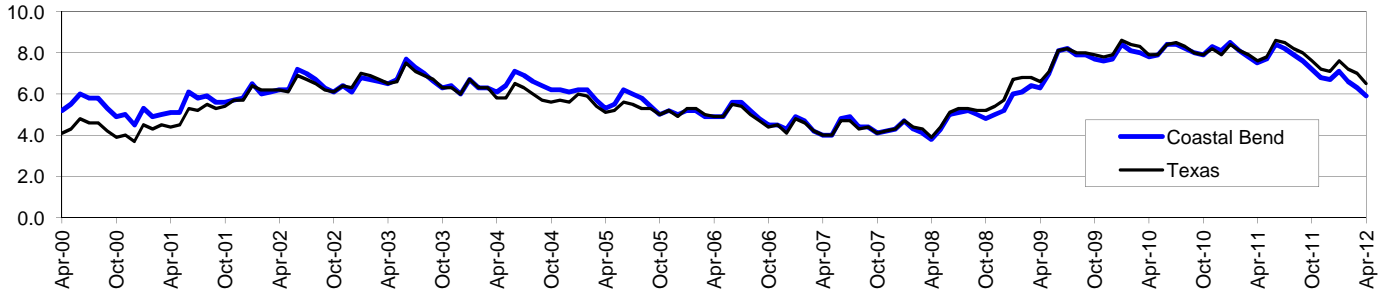
Less than High School	\$15,545	Some College or Associates	\$31,460	Graduate or Professional	\$54,717
High School & GED	\$23,028	Bachelor's	\$43,005		

Coastal Bend Workforce Development Area*

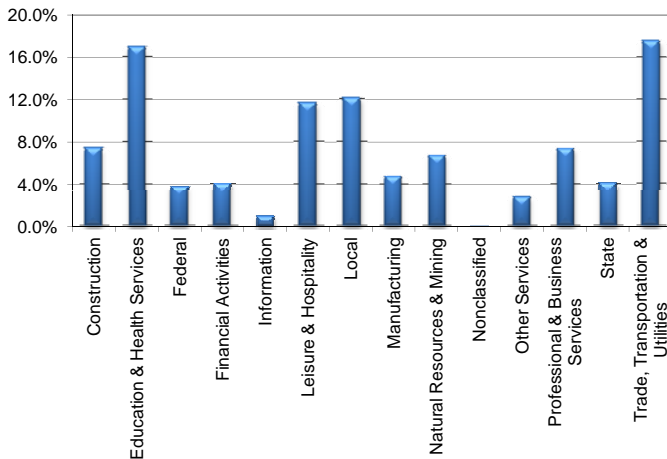
April 2012

Coastal Bend WDA					Texas				
	CLF	Employed	Unemployed	Rate		CLF	Employed	Unemployed	Rate
Apr-12	297,445	279,849	17,596	5.9	Apr-12	12,547,852	11,733,325	814,527	6.5
Mar-12	295,222	276,491	18,731	6.3	Mar-12	12,531,173	11,655,250	875,923	7.0
Apr-11	289,085	267,497	21,588	7.5	Apr-11	12,408,713	11,466,248	942,465	7.6

Historical Unemployment Rates



Coastal Bend WDA Industry Composition 3rd Quarter 2011



Total WDA Claims

Continued Claims for the Week of the 12th

	Apr-12	Mar-12	Apr-11	OTY
Continued	2,288	2,297	3,083	-795

Texas Unemployment Insurance Claims

Continued Claims for the Week of the 12th

	Apr-12	Mar-12	Apr-11	OTY
Continued	125,487	133,295	139,992	-14,505

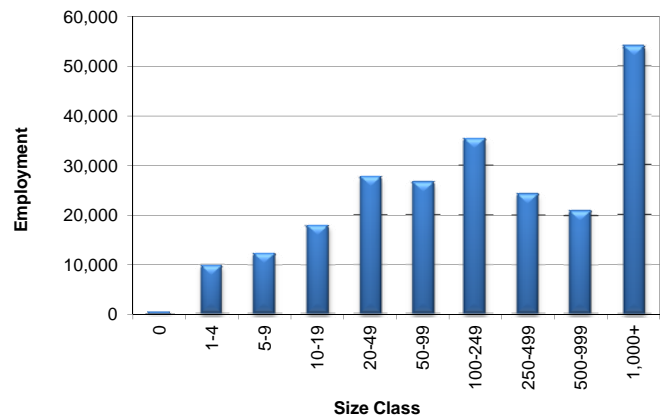
Coastal Bend WDA Average Weekly Wage

	Coastal Bend	Texas
3rd Quarter 2011	\$787.52	\$931.50
2nd Quarter 2011	\$752.98	\$899.57
3rd Quarter 2010	\$727.02	\$876.29
Quarter Change	\$34.54	\$31.93
OTY Change	\$60.50	\$55.21

NAICS Covered Employment Quarterly Data 3rd Quarter 2011

SUPER SECTOR	Employment	Change	
		Quarter	Year
Construction	16,838	269	575
Education & Health Services	38,813	348	815
Federal	8,646	78	-134
Financial Activities	9,326	122	387
Information	2,275	-27	-111
Leisure & Hospitality	26,556	236	904
Local	27,665	-2,562	-935
Manufacturing	10,926	317	582
Natural Resources & Mining	15,438	1,498	3,484
Nonclassified	39	26	11
Other Services	6,405	-61	142
Professional & Business Services	16,793	-344	-82
State	9,365	-854	-561
Trade, Transportation & Utilities	40,191	956	933
TOTAL	229,276	2	6,010

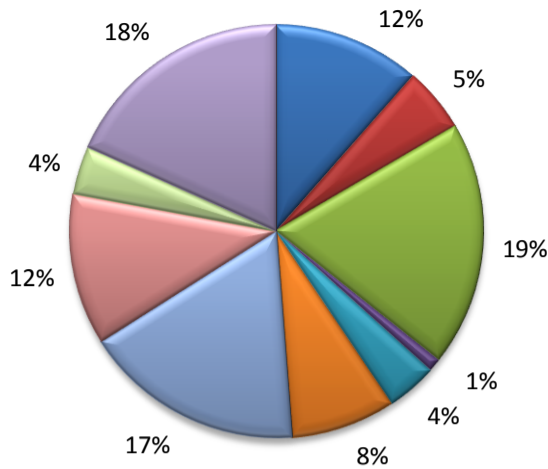
Size Class Employment Composition 3rd Quarter 2011



*Counties in WDA: Aransas, Bee, Brooks, Duval, Jim Wells, Kenedy, Kleberg, Live Oak, McMullen, Nueces, Refugio, & San Patricio

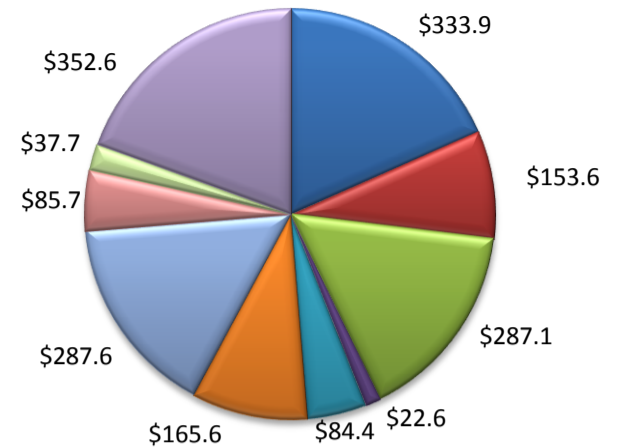
(Aransas, Nueces, San Patricio)

Industry Composition



- Mining, Logging, and Construction
- Manufacturing
- Trade, Transportation, and Utilities
- Information
- Financial Activities
- Professional and Business Services
- Education and Health Services
- Leisure and Hospitality
- Other Services
- Government

Wages by Industry (in millions)
3rd Quarter 2011



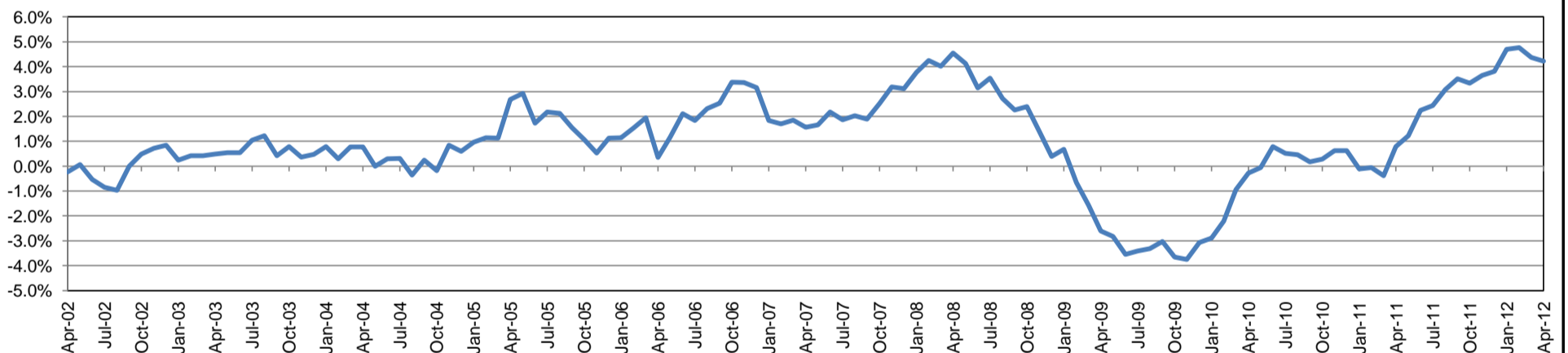
Employment by Industry

	Apr-12	Mar-12	Apr-11	Monthly Change		Annual Change	
				Actual	%	Actual	%
Total Nonfarm	187,800	186,200	180,200	1,600	0.9%	7,600	4.2%
Mining, Logging, and Construction	21,500	21,300	19,900	200	0.9%	1,600	8.0%
Manufacturing	9,600	9,500	9,200	100	1.1%	400	4.4%
Trade, Transportation, and Utilities	35,900	35,500	31,500	400	1.1%	4,400	14.0%
Information	1,900	1,900	2,000	0	0.0%	-100	-5.0%
Financial Activities	7,400	7,400	7,300	0	0.0%	100	1.4%
Professional and Business Services	15,300	15,200	15,400	100	0.7%	-100	-0.7%
Education and Health Services	32,400	32,300	31,400	100	0.3%	1,000	3.2%
Leisure and Hospitality	22,300	21,900	21,300	400	1.8%	1,000	4.7%
Other Services	7,100	7,100	6,900	0	0.0%	200	2.9%
Government	34,400	34,100	35,300	300	0.9%	-900	-2.6%

Industry Size Class

Size Class	Employees per firm	Number of Firms	September 2011		
			Employment in Size Class	% Total Employment	
9	1000+	17	41,334	23.3%	
8	500-999	26	17,712	10.0%	
7	250-499	45	14,761	8.3%	
6	100-249	185	28,084	15.9%	
5	50-99	305	21,351	12.1%	
4	20-49	734	22,437	12.7%	
3	10-19	1,051	14,209	8.0%	
2	5-9	1,478	9,770	5.5%	
1	1-4	3,605	7,444	4.2%	
0	0	584	0	0.0%	
Total			8,030	177,102	100.0%

Annual Growth Rate for Total Nonagricultural Employment



Unemployment Information (all estimates in thousands)

	Corpus Christi MSA				Texas (Actual)				United States (Actual)			
	C.L.F.	Emp.	Unemp.	Rate	C.L.F.	Emp.	Unemp.	Rate	C.L.F.	Emp.	Unemp.	Rate
Apr-12	221.8	208.4	13.4	6.1	12,547.8	11,733.3	814.5	6.5	153,905.0	141,995.0	11,910.0	7.7
Mar-12	220.4	206.1	14.3	6.5	12,531.2	11,655.3	875.9	7.0	154,316.0	141,412.0	12,904.0	8.4
Apr-11	215.5	199.0	16.5	7.7	12,408.7	11,466.2	942.5	7.6	152,898.0	139,661.0	13,237.0	8.7

Historical Unemployment Rates

