

Coastal Bend Workforce Area

Area	Area Type	Latest Monthly Data April 2011				Previous Monthly Data March 2011				Year Ago April 2010			
		Labor Force	Employment	Unemployment	Rate	Labor Force	Employment	Unemployment	Rate	Labor Force	Employment	Unemployment	Rate
U.S.	Nation	152,898,000	139,661,000	13,237,000	8.7	153,022,000	138,962,000	14,060,000	9.2	153,911,000	139,302,000	14,609,000	9.5
Texas	State	12,248,373	11,306,060	942,313	7.7	12,215,439	11,231,253	984,186	8.1	12,135,958	11,177,499	958,459	7.9
Corpus Christi	MSA	215,587	199,153	16,434	7.6	217,053	199,877	17,176	7.9	213,637	197,346	16,291	7.6
Coastal Bend	WDA	285,576	264,037	21,539	7.5	287,011	264,460	22,551	7.9	283,530	261,623	21,907	7.7
Aransas	County	11,951	11,107	844	7.1	12,087	11,147	940	7.8	11,954	11,006	948	7.9
Bee	County	12,530	11,454	1,076	8.6	12,668	11,541	1,127	8.9	12,453	11,373	1,080	8.7
Brooks	County	3,208	2,933	275	8.6	3,189	2,891	298	9.3	3,278	2,972	306	9.3
Duval	County	5,340	4,843	497	9.3	5,369	4,818	551	10.3	5,329	4,740	589	11.1
Jim Wells	County	21,275	19,737	1,538	7.2	21,131	19,530	1,601	7.6	21,425	19,611	1,814	8.5
Kenedy	County	234	227	7	3.0	232	225	7	3.0	237	225	12	5.1
Kleberg	County	17,430	16,318	1,112	6.4	17,378	16,210	1,168	6.7	17,292	16,145	1,147	6.6
Live Oak	County	5,295	4,971	324	6.1	5,310	4,984	326	6.1	5,296	4,937	359	6.8
McMullen	County	403	380	23	5.7	391	367	24	6.1	373	347	26	7.0
Nueces	County	172,044	159,179	12,865	7.5	173,055	159,758	13,297	7.7	169,945	157,735	12,210	7.2
Refugio	County	4,275	4,021	254	5.9	4,289	4,017	272	6.3	4,210	3,927	283	6.7
San Patricio	County	31,591	28,867	2,724	8.6	31,912	28,972	2,940	9.2	31,738	28,605	3,133	9.9

- Earnings for all occupations Coastal Bend, expressed as hourly rate (TWC):

Coastal Bend	All Occupations-	Average \$16.86/hr.	Entry level \$7.88/hr.	Experienced workers \$21.34/hr.	Top 10% \$30.73/hr.
Texas	All Occupations-	Average \$19.76/hr.	Entry level \$8.51/hr.	Experienced workers \$ 25.38/hr.	Top 10% \$36.91/hr.

- Educational Attainment for population 25 years of age and older - Corpus Christi (Census American Fact Finder / American Community Survey):

Less than 9 th grade	9.3%	12 th grade & GED	26.7%	Associates degree	7.4%	Graduate or Professional degrees	7.0%
9 th thru 11 th grade	11.8%	Some College	24.7%	Bachelors degree	13.0%		

- Median earnings Corpus Christi by education for persons 25 years of age & up (Census AFF / ACS): **\$27,211** (\$36,380 male/ \$22,328 female)

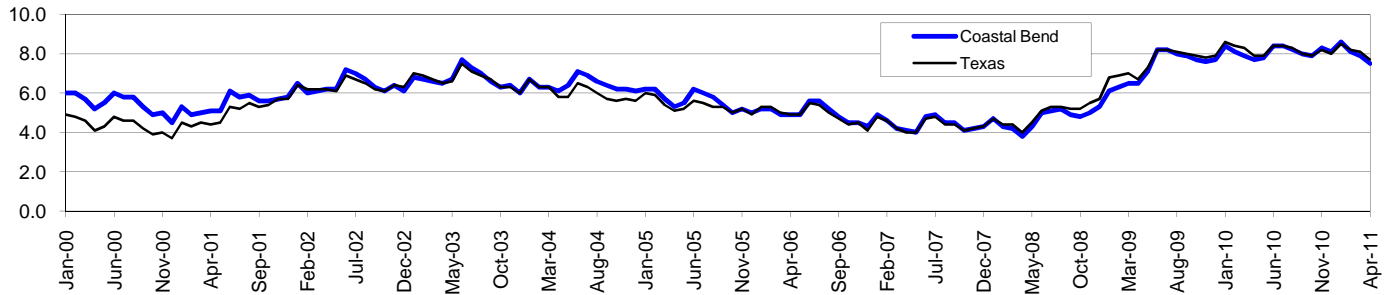
Less than High School	\$15,545	Some College or Associates	\$31,460	Graduate or Professional	\$54,717
High School & GED	\$23,028	Bachelor's	\$43,005		

Coastal Bend Workforce Development Area*

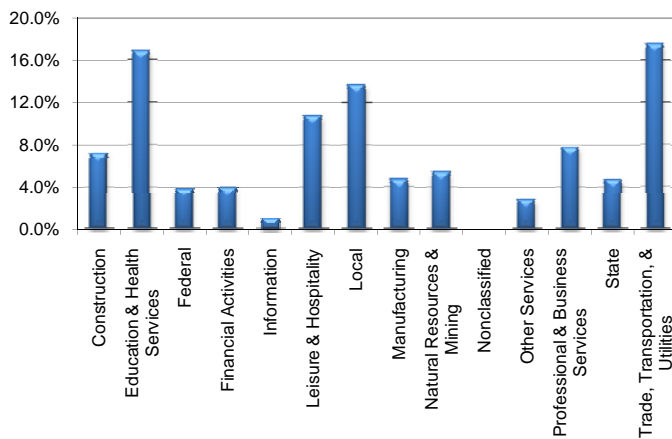
April 2011

Coastal Bend WDA					Texas				
	CLF	Employed	Unemployed	Rate		CLF	Employed	Unemployed	Rate
Apr-11	285,576	264,037	21,539	7.5	Apr-11	12,248,373	11,306,060	942,313	7.7
Mar-11	287,011	264,460	22,551	7.9	Mar-11	12,215,439	11,231,253	984,186	8.1
Apr-10	283,530	261,623	21,907	7.7	Apr-10	12,135,958	11,177,499	958,459	7.9

Historical Unemployment Rates



Coastal Bend WDA Industry Composition 4th Quarter 2010



Total WDA Claims

	Apr-11	Mar-11	Apr-10	OTY
Initial	2,016	2,044	2,509	-493
Continued	6,741	7,999	9,711	-2,970
Continued Claims for the Week of the 12th				
Continued	6,646	7,270	8,047	-1,401

Texas Unemployment Insurance Claims Filed

	Apr-11	Mar-11	Apr-10	OTY
Initial	85,301	84,821	96,295	-10,994
Continued	736,646	815,946	954,091	-217,445
Continued Claims for the Week of the 12th				
Continued	171,736	183,354	218,901	-47,165

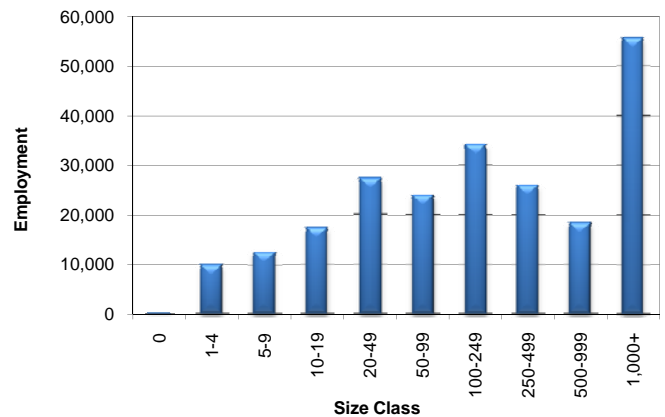
Coastal Bend WDA Average Weekly Wage

	Coastal Bend	WDA Qtr. Chg.	Texas
4th Quarter 2010	\$804.44	\$77.41	\$976.43
3rd Quarter 2010	\$727.03	WDA OTY Chg.	\$876.28
4th Quarter 2009	\$761.97	\$42.47	\$943.73

NAICS Covered Employment Quarterly Data 4th Quarter 2010

SUPER SECTOR	Employment	Change	
		Quarter	Year
Construction	16,191	-73	-606
Education & Health Services	37,842	-156	863
Federal	8,596	-184	88
Financial Activities	8,913	-26	-242
Information	2,332	-54	-198
Leisure & Hospitality	24,294	-1,358	57
Local	30,815	2,215	40
Manufacturing	10,477	133	-51
Natural Resources & Mining	12,233	285	2,054
Nonclassified	34	6	4
Other Services	6,237	-26	27
Professional & Business Services	17,309	434	356
State	10,616	690	221
Trade, Transportation, & Utilities	39,524	266	530
TOTAL	225,413	2,152	3,143

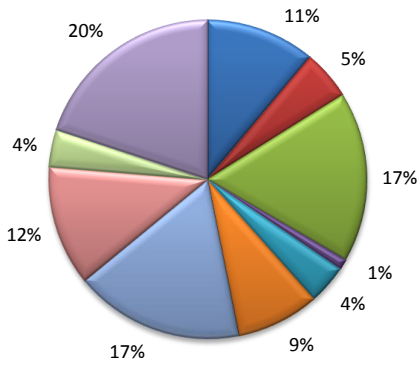
Size Class Employment Composition 4th Quarter 2010



*Counties in WDA: Aransas, Bee, Brooks, Duval, Jim Wells, Kenedy, Kleberg, Live Oak, McMullen, Nueces, Refugio, & San Patricio

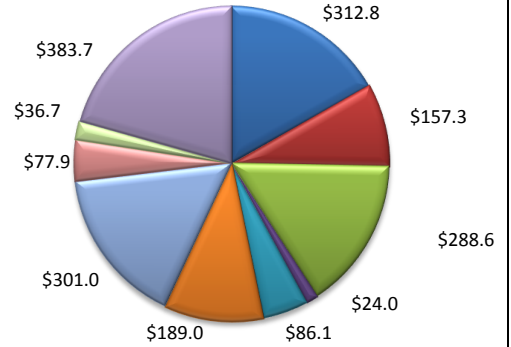
(Aransas, Nueces, San Patricio)

Industry Composition



- Mining, Logging, and Construction
- Manufacturing
- Trade, Transportation, and Utilities
- Information
- Financial Activities
- Professional and Business Services
- Education and Health Services
- Leisure and Hospitality
- Other Services
- Government

Wages by Industry (in millions)
4th Quarter 2010



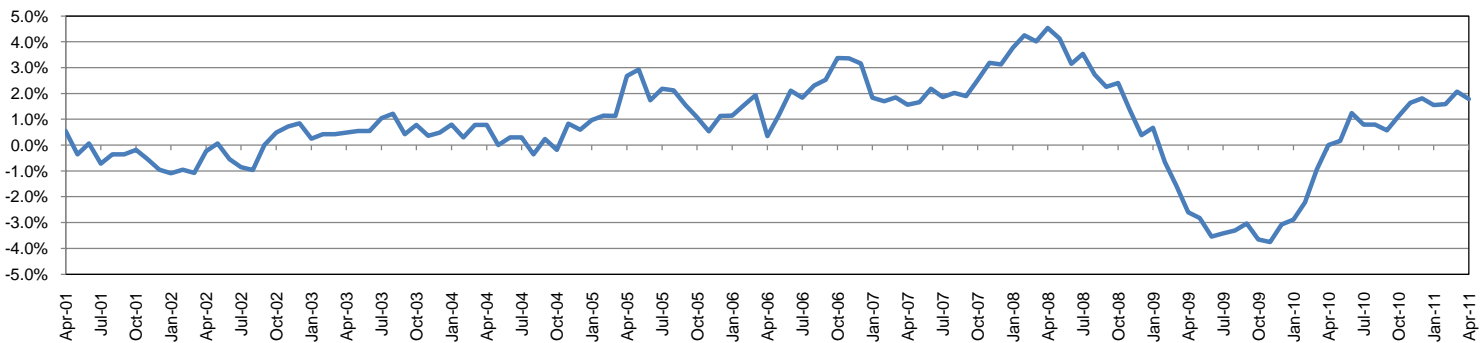
Employment by Industry

				Monthly Change		Annual Change	
	Apr-11	Mar-11	Apr-10	Actual	%	Actual	%
Total Nonfarm	182,500	182,800	179,300	-300	-0.2%	3,200	1.8%
Mining, Logging, and Construction	20,200	20,200	19,900	0	0.0%	300	1.5%
Manufacturing	9,200	9,200	9,100	0	0.0%	100	1.1%
Trade, Transportation, and Utilities	31,500	31,800	30,700	-300	-0.9%	800	2.6%
Information	2,000	2,100	2,200	-100	-4.8%	-200	-9.1%
Financial Activities	7,300	7,200	7,400	100	1.4%	-100	-1.4%
Professional and Business Services	15,300	15,300	15,300	0	0.0%	0	0.0%
Education and Health Services	31,500	31,300	30,700	200	0.6%	800	2.6%
Leisure and Hospitality	22,200	22,700	21,400	-500	-2.2%	800	3.7%
Other Services	6,900	6,900	7,000	0	0.0%	-100	-1.4%
Government	36,400	36,100	35,600	300	0.8%	800	2.3%

Industry Size Class

Size Class	Employees per firm	Number of Firms	December 2010	
			Employment in Size Class	% Total Employment
9	1000+	19	44,146	25.2%
8	500-999	21	14,696	8.4%
7	250-499	47	15,777	9.0%
6	100-249	174	26,606	15.2%
5	50-99	287	20,148	11.5%
4	20-49	726	22,020	12.6%
3	10-19	1,013	13,753	7.9%
2	5-9	1,504	10,038	5.7%
1	1-4	3,723	7,695	4.4%
0	0	527	0	0.0%
Total		8,041	174,879	100.0%

Annual Growth Rate for Total Nonagricultural Employment



Unemployment Information (all estimates in thousands)

	Corpus Christi MSA				Texas (Actual)				United States (Actual)			
	C.L.F.	Emp.	Unemp.	Rate	C.L.F.	Emp.	Unemp.	Rate	C.L.F.	Emp.	Unemp.	Rate
Apr-11	215.6	199.2	16.4	7.6	12,248.4	11,306.1	942.3	7.7	152,898.0	139,661.0	13,237.0	8.7
Mar-11	217.1	199.9	17.2	7.9	12,215.5	11,231.3	984.2	8.1	153,022.0	138,962.0	14,060.0	9.2
Apr-10	213.6	197.3	16.3	7.6	12,136.0	11,177.5	958.5	7.9	153,911.0	139,302.0	14,609.0	9.5

Historical Unemployment Rates

