



Coastal Bend Workforce Area

| Area | Area Type | Latest Monthly Data December 2010 | | | | Previous Monthly Data November 2010 | | | | Year Ago December 2009 | | | |
|----------------|-----------|--------------------------------------|-------------|--------------|------|--|-------------|--------------|------|---------------------------|-------------|--------------|------|
| | | Labor Force | Employment | Unemployment | Rate | Labor Force | Employment | Unemployment | Rate | Labor Force | Employment | Unemployment | Rate |
| U.S. | Nation | 153,156,000 | 139,159,000 | 13,997,000 | 9.1 | 153,698,000 | 139,415,000 | 14,282,000 | 9.3 | 152,693,000 | 137,953,000 | 14,740,000 | 9.7 |
| Texas | State | 12,201,405 | 11,223,782 | 977,623 | 8.0 | 12,226,458 | 11,214,393 | 1,012,065 | 8.3 | 12,027,653 | 11,069,879 | 957,774 | 8.0 |
| Corpus Christi | MSA | 214,903 | 197,118 | 17,785 | 8.3 | 214,914 | 196,867 | 18,047 | 8.4 | 209,197 | 193,139 | 16,058 | 7.7 |
| Coastal Bend | WDA | 285,377 | 262,007 | 23,370 | 8.2 | 285,567 | 261,673 | 23,894 | 8.4 | 279,528 | 257,462 | 22,066 | 7.9 |
| Aransas | County | 12,011 | 11,046 | 965 | 8.0 | 11,976 | 11,032 | 944 | 7.9 | 11,727 | 10,823 | 904 | 7.7 |
| Bee | County | 12,114 | 10,963 | 1,151 | 9.5 | 12,117 | 10,911 | 1,206 | 10.0 | 11,914 | 10,815 | 1,099 | 9.2 |
| Brooks | County | 3,397 | 3,081 | 316 | 9.3 | 3,385 | 3,050 | 335 | 9.9 | 3,368 | 3,045 | 323 | 9.6 |
| Duval | County | 5,249 | 4,667 | 582 | 11.1 | 5,278 | 4,675 | 603 | 11.4 | 5,346 | 4,705 | 641 | 12.0 |
| Jim Wells | County | 22,222 | 20,558 | 1,664 | 7.5 | 22,327 | 20,590 | 1,737 | 7.8 | 22,422 | 20,373 | 2,049 | 9.1 |
| Kenedy | County | 247 | 237 | 10 | 4.0 | 248 | 237 | 11 | 4.4 | 252 | 234 | 18 | 7.1 |
| Kleberg | County | 17,537 | 16,315 | 1,222 | 7.0 | 17,567 | 16,292 | 1,275 | 7.3 | 17,293 | 16,119 | 1,174 | 6.8 |
| Live Oak | County | 4,985 | 4,654 | 331 | 6.6 | 5,030 | 4,667 | 363 | 7.2 | 5,130 | 4,760 | 370 | 7.2 |
| McMullen | County | 363 | 338 | 25 | 6.9 | 366 | 339 | 27 | 7.4 | 359 | 333 | 26 | 7.2 |
| Nueces | County | 170,912 | 157,372 | 13,540 | 7.9 | 170,870 | 157,172 | 13,698 | 8.0 | 166,190 | 154,195 | 11,995 | 7.2 |
| Refugio | County | 4,359 | 4,076 | 283 | 6.5 | 4,335 | 4,045 | 290 | 6.7 | 4,247 | 3,940 | 307 | 7.2 |
| San Patricio | County | 31,981 | 28,700 | 3,281 | 10.3 | 32,068 | 28,663 | 3,405 | 10.6 | 31,280 | 28,120 | 3,160 | 10.1 |

Earnings for all occupations Coastal Bend, expressed as hourly rate (TWC):

Coastal Bend - All Occupations - Average \$16.86/hr.; Entry level \$7.88/hr.; Experienced workers \$21.34/hr.; top 10% \$30.73/hr.

Texas - All Occupations - Average \$19.76/hr.; Entry level \$8.51/hr.; Experienced workers \$ 25.38/hr.; top 10% \$36.91/hr.

Educational Attainment for population 25 years of age and older - Corpus Christi (Census American Fact Finder / American Community Survey):

Less than 9th grade 9.3%; 9th thru 11th grade 11.8%; 12th grade and GED 26.7%; some college 24.7%; Associates degree 7.4%;

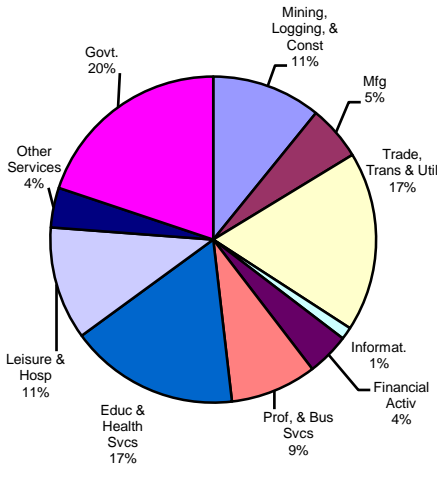
Bachelors degree 13.0%; Graduate or Professional degrees 7.0%

Median earnings Corpus Christi by education for persons 25 years of age & up (Census AFF / ACS): \$27,211 (\$36,380 male/ \$22,328 female)

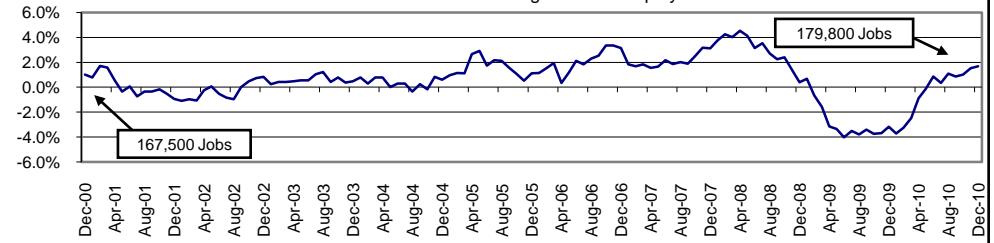
Less than High School \$15,545 Some College or Associates \$31,460 Graduate & Professional \$54,717

High School & GED \$23,028 Bachelor's \$43,005

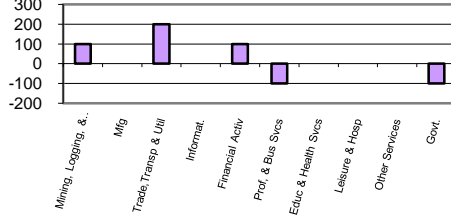
Industry Composition



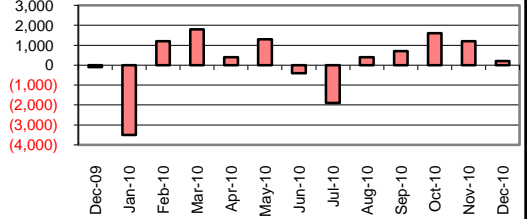
Annual Growth Rate for Total NonAgricultural Employment



Monthly Change by Industry



Monthly Change in Total Nonag Employment



Employment by Industry

| | | | | Monthly Change | | Annual Change | |
|-----------------------------|----------|----------|----------|----------------|-------|---------------|-------|
| | Dec-2010 | Nov-2010 | Dec-2009 | Actual | % | Actual | % |
| Total Nonagricultural | 179,800 | 179,600 | 176,800 | 200 | 0.1% | 3,000 | 1.7% |
| Mining, Logging, & Const | 19,500 | 19,400 | 18,500 | 100 | 0.5% | 1,000 | 5.4% |
| Manufacturing | 9,800 | 9,800 | 9,500 | 0 | 0.0% | 300 | 3.2% |
| Trade, Transp., & Utilities | 32,100 | 31,900 | 31,800 | 200 | 0.6% | 300 | 0.9% |
| Information | 2,200 | 2,200 | 2,200 | 0 | 0.0% | 0 | 0.0% |
| Financial Activities | 7,600 | 7,500 | 7,600 | 100 | 1.3% | 0 | 0.0% |
| Profes., & Business Svcs | 15,400 | 15,500 | 15,000 | -100 | -0.7% | 400 | 2.7% |
| Education & Health Svcs | 30,200 | 30,200 | 29,400 | 0 | 0.0% | 800 | 2.7% |
| Leisure & Hospitality | 20,200 | 20,200 | 20,300 | 0 | 0.0% | -100 | -0.5% |
| Other Services | 7,100 | 7,100 | 6,900 | 0 | 0.0% | 200 | 2.9% |
| Government | 35,700 | 35,800 | 35,600 | -100 | -0.3% | 100 | 0.3% |

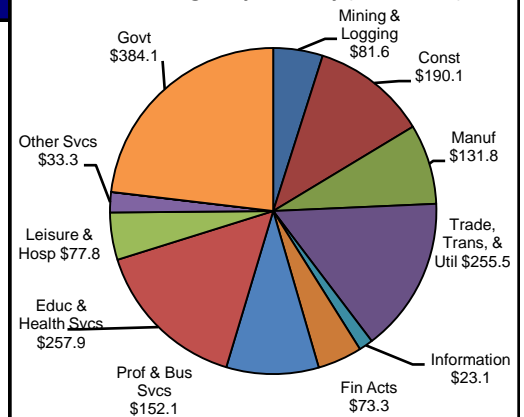
Size Class of Industries as of June 2010

| Size Class | Employees Per Firm | Number of Firms | Employment in Size Class | % of Total Employment |
|--------------|--------------------|-----------------|--------------------------|-----------------------|
| 9 | 1000+ | 18 | 42875 | 24.4% |
| 8 | 500-999 | 23 | 15974 | 9.1% |
| 7 | 250-499 | 46 | 15084 | 8.6% |
| 6 | 100-249 | 184 | 27556 | 15.7% |
| 5 | 50-99 | 285 | 19902 | 11.3% |
| 4 | 20-49 | 765 | 23212 | 13.2% |
| 3 | 10-19 | 993 | 13518 | 7.7% |
| 2 | 5-9 | 1578 | 10461 | 5.9% |
| 1 | 1-4 | 3566 | 7299 | 4.1% |
| 0 | 0 | 570 | 0 | 0.0% |
| TOTAL | | 8028 | 175881 | 100.0% |

Comments for December 2010

Total Nonagricultural Employment in the Corpus Christi MSA increased by 200 jobs in December. Three industries had positive movement over the month. Retail Trade and Trade, Transportation and Utilities each gained 200 jobs over the month. Financial Activities, Mining, Logging and Construction, and Local Government all gained 100 staff in December. The annual growth rate for the Corpus Christi MSA was 1.7 percent in December, and over the past twelve months it has gained 3,000 positions.

2nd Quarter Wages by Industry (in millions)



Unemployment Information (all estimates are in thousands)

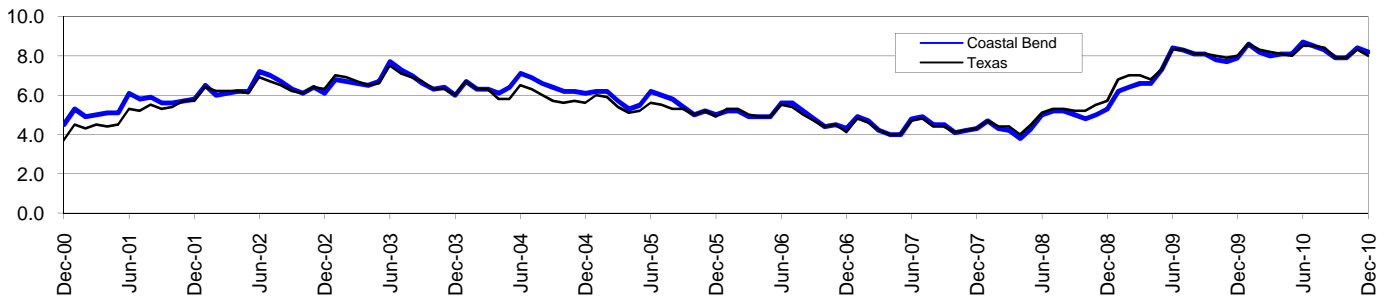
| | Corpus Christi MSA | | | | Texas (Actual) | | | | United States (Actual) | | | |
|----------|--------------------|-------|--------|--------|----------------|----------|---------|--------|------------------------|-----------|----------|--------|
| | C.L.F. | Emp. | Unemp. | % Rate | C.L.F. | Emp. | Unemp. | % Rate | C.L.F. | Emp. | Unemp. | % Rate |
| Dec-2010 | 214.9 | 197.1 | 17.8 | 8.3 | 12,201.4 | 11,223.8 | 977.6 | 8.0 | 153,156.0 | 139,159.0 | 13,997.0 | 9.1 |
| Nov-2010 | 214.9 | 196.9 | 18.0 | 8.4 | 12,226.5 | 11,214.4 | 1,012.1 | 8.3 | 153,698.0 | 139,415.0 | 14,282.0 | 9.3 |
| Dec-2009 | 209.2 | 193.1 | 16.1 | 7.7 | 12,027.7 | 11,069.9 | 957.8 | 8.0 | 152,693.0 | 137,953.0 | 14,740.0 | 9.7 |

Coastal Bend Workforce Development Area*

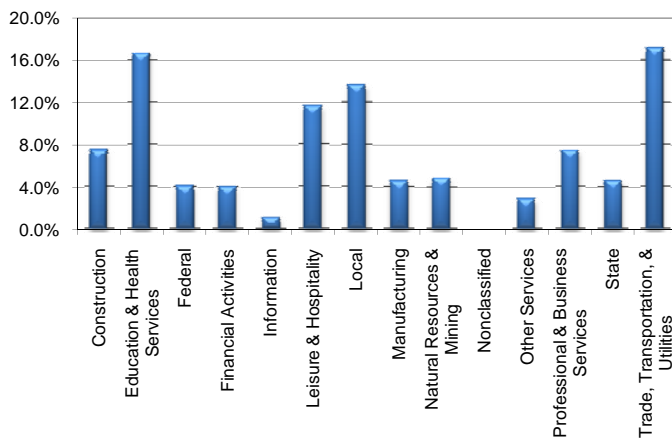
December 2010

| Coastal Bend WDA | | | | | Texas | | | | |
|------------------|---------|----------|------------|------|---------------|------------|------------|------------|------|
| | CLF | Employed | Unemployed | Rate | | CLF | Employed | Unemployed | Rate |
| Dec-10 | 285,377 | 262,007 | 23,370 | 8.2 | Dec-10 | 12,201,405 | 11,223,782 | 977,623 | 8.0 |
| Nov-10 | 285,567 | 261,673 | 23,894 | 8.4 | Nov-10 | 12,226,458 | 11,214,393 | 1,012,065 | 8.3 |
| Dec-09 | 279,528 | 257,462 | 22,066 | 7.9 | Dec-09 | 12,027,653 | 11,069,879 | 957,774 | 8.0 |

Historical Unemployment Rates



Coastal Bend WDA Industry Composition 2nd Quarter 2010



Total WDA Claims

| | Dec-10 | Nov-10 | Dec-09 | OTY |
|--|--------|--------|--------|---------------|
| Initial | 2,228 | 2,526 | 2,457 | -229 |
| Continued | 9,604 | 9,221 | 12,344 | -2,740 |
| Continued Claims for the Week of the 12th | | | | |
| Continued | 8,539 | 7,617 | 8,316 | 223 |

Texas Unemployment Insurance Claims Filed

| | Dec-10 | Nov-10 | Dec-09 | OTY |
|--|---------|---------|-----------|-----------------|
| Initial | 85,610 | 85,666 | 100,826 | -15,216 |
| Continued | 880,919 | 887,513 | 1,147,179 | -266,260 |
| Continued Claims for the Week of the 12th | | | | |
| Continued | 208,598 | 190,017 | 252,344 | -43,746 |

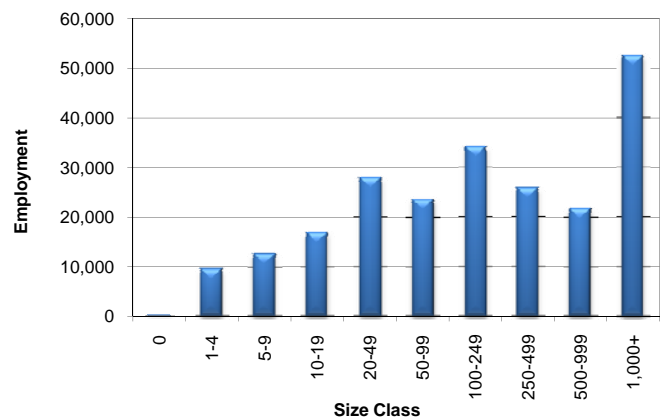
Coastal Bend WDA Average Weekly Wage

| | Coastal Bend | WDA Qtr. Chg. | Texas |
|-------------------------|--------------|---------------------|----------|
| 2nd Quarter 2010 | \$711.82 | \$26.93 | \$863.94 |
| 1st Quarter 2010 | \$684.89 | WDA OTY Chg. | \$891.60 |
| 2nd Quarter 2009 | \$684.44 | \$27.38 | \$838.52 |

NAICS Covered Employment Quarterly Data 2nd Quarter 2010

| SUPER SECTOR | Employment | Change | |
|------------------------------------|----------------|--------------|------------|
| | | Quarter | Year |
| Construction | 16,744 | -664 | -345 |
| Education & Health Services | 37,525 | 384 | 1,272 |
| Federal | 9,153 | 656 | 591 |
| Financial Activities | 9,070 | 43 | -286 |
| Information | 2,464 | 4 | -152 |
| Leisure & Hospitality | 26,095 | 1,763 | 175 |
| Local | 30,846 | 158 | 508 |
| Manufacturing | 10,195 | -124 | -883 |
| Natural Resources & Mining | 11,027 | 700 | 281 |
| Nonclassified | 35 | 15 | -6 |
| Other Services | 6,375 | 210 | -127 |
| Professional & Business Services | 16,810 | -128 | -28 |
| State | 10,312 | -19 | 366 |
| Trade, Transportation, & Utilities | 38,700 | 496 | -569 |
| TOTAL | 225,351 | 3,494 | 797 |

Size Class Employment Composition 2nd Quarter 2010



*Counties in WDA: Aransas, Bee, Brooks, Duval, Jim Wells, Kenedy, Kleberg, Live Oak, McMullen, Nueces, Refugio, & San Patricio

Available at <http://www.tracer2.com/>