

# Coastal Bend Workforce Area

Area	Area Type	Latest Monthly Data March 2012						Previous Monthly Data February 2012				Year Ago March 2011			
		Labor Force	Employment	Unemployment	Rate	M+-	Y+-	Labor Force	Employment	Unemployment	Rate	Labor Force	Employment	Unemployment	Rate
United States	Nation	154,316,000	141,412,000	12,904,000	8.4	-.3	-.8	154,114,000	140,684,000	13,430,000	8.7	153,022,000	138,962,000	14,060,000	9.2
Texas	State	12,532,115	11,655,731	876,384	7.0	-.2	-.9	12,463,725	11,569,971	893,754	7.2	12,390,813	11,408,556	982,257	7.9
Coastal Bend	WDA	295,227	276,471	18,756	6.4	-.2	-1.4	293,274	273,904	19,370	6.6	288,440	265,860	22,580	7.8
Corpus Christi	MSA	220,400	206,100	14,300	6.5	-.3	-1.5	218,900	204,100	14,800	6.8	215,200	197,900	17,300	8.0
Aransas	County	11,083	10,396	687	6.2	-0.7	-2.1	11,055	10,293	762	6.9	10,880	9,980	900	8.3
Bee	County	12,718	11,806	912	7.2	-0.3	-1.4	12,595	11,656	939	7.5	12,644	11,555	1,089	8.6
Brooks	County	3,349	3,098	251	7.5	0.0	-1.1	3,298	3,051	247	7.5	3,366	3,075	291	8.6
Duval	County	5,596	5,171	425	7.6	0.2	-2.1	5,540	5,129	411	7.4	5,613	5,068	545	9.7
Jim Wells	County	23,569	22,308	1,261	5.4	-0.2	-1.5	23,531	22,210	1,321	5.6	22,970	21,395	1,575	6.9
Kenedy	County	259	251	8	3.1	0.0	0.0	259	251	8	3.1	254	246	8	3.1
Kleberg	County	17,857	16,803	1,054	5.9	-0.2	-0.8	17,842	16,751	1,091	6.1	17,601	16,420	1,181	6.7
Live Oak	County	6,406	6,114	292	4.6	-0.1	-1.0	6,332	6,036	296	4.7	5,865	5,535	330	5.6
McMullen	County	577	559	18	3.1	-0.2	-0.4	574	555	19	3.3	571	551	20	3.5
Nueces	County	179,580	168,219	11,361	6.3	-0.3	-1.4	178,269	166,560	11,709	6.6	175,014	161,487	13,527	7.7
Refugio	County	4,446	4,231	215	4.8	-0.5	-1.3	4,401	4,169	232	5.3	4,403	4,135	268	6.1
San Patricio	County	29,787	27,515	2,272	7.6	-0.3	-2.1	29,578	27,243	2,335	7.9	29,259	26,413	2,846	9.7

(M+-) Change in unemployment rate from last month (Increase) (Decrease)

(Y+-) Change in unemployment rate from last year (Increase) (Decrease)

- Earnings for all occupations Coastal Bend, expressed as hourly rate (TWC):

Coastal Bend	All Occupations-	Average \$17.28/hr.	Entry level \$8.30/hr.	Experienced workers \$21.77/hr.	Top 10% \$31.60/hr.
Texas	All Occupations-	Average \$20.30/hr.	Entry level \$9.62/hr.	Experienced workers \$ 25.68/hr.	Top 10% \$37.83/hr.

- Educational Attainment for population 25 years of age and older - Corpus Christi (Census American Fact Finder/American Community Survey):

Less than 9 <sup>th</sup> grade	9.3%	12 <sup>th</sup> grade & GED	26.7%	Associates degree	7.4%	Graduate or Professional degrees	7.0%
9 <sup>th</sup> thru 11 <sup>th</sup> grade	11.8%	Some College	24.7%	Bachelors degree	13.0%		

- Median earnings Corpus Christi by education for persons 25 years of age & up (Census AFF/ACS): \$27,211 (\$36,380 male/ \$22,328 female)

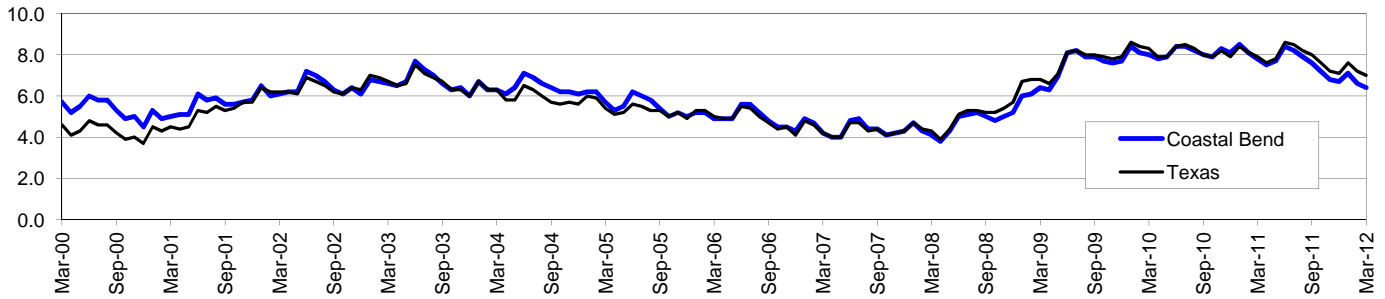
Less than High School	\$15,545	Some College or Associates	\$31,460	Graduate or Professional	\$54,717
High School & GED	\$23,028	Bachelor's	\$43,005		

# Coastal Bend Workforce Development Area\*

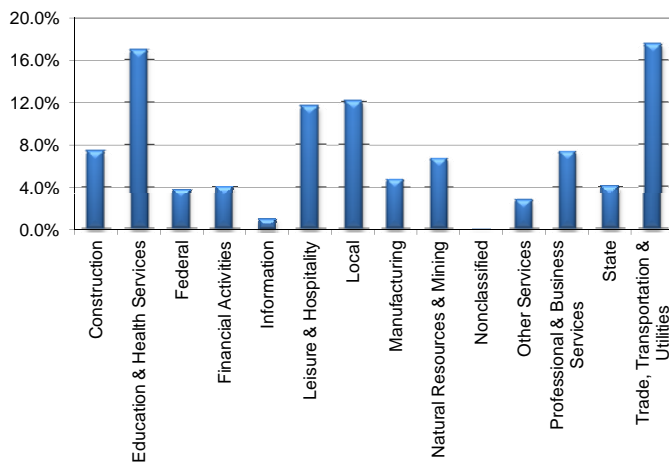
March 2012

Coastal Bend WDA					Texas				
	CLF	Employed	Unemployed	Rate		CLF	Employed	Unemployed	Rate
Mar-12	295,227	276,471	18,756	6.4	Mar-12	12,532,115	11,655,731	876,384	7.0
Feb-12	293,274	273,904	19,370	6.6	Feb-12	12,463,725	11,569,971	893,754	7.2
Mar-11	288,440	265,860	22,580	7.8	Mar-11	12,390,813	11,408,556	982,257	7.9

## Historical Unemployment Rates



## Coastal Bend WDA Industry Composition 3rd Quarter 2011



## Total WDA Claims

### Continued Claims for the Week of the 12th

	Mar-12	Feb-12	Mar-11	OTY
Continued	N/A	N/A	N/A	N/A

### Texas Unemployment Insurance Claims

#### Continued Claims for the Week of the 12th

	Mar-12	Feb-12	Mar-11	OTY
Continued	132,245	135,910	145,645	-13,400

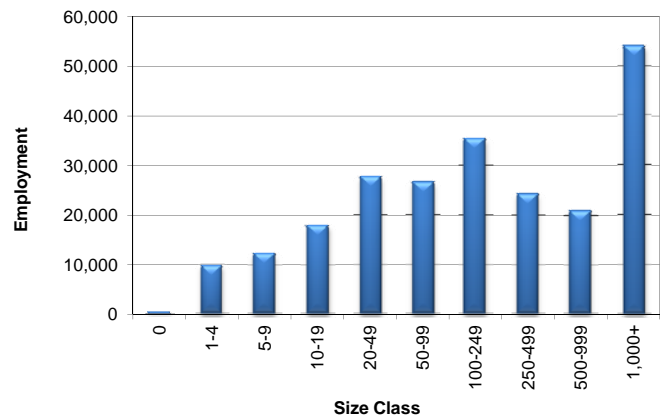
## Coastal Bend WDA Average Weekly Wage

	Coastal Bend	Texas
3rd Quarter 2011	\$787.52	\$931.50
2nd Quarter 2011	\$752.98	\$899.57
3rd Quarter 2010	\$727.02	\$876.29
Quarter Change	\$34.54	\$31.93
OTY Change	\$60.50	\$55.21

## NAICS Covered Employment Quarterly Data 3rd Quarter 2011

SUPER SECTOR	Employment	Change	
		Quarter	Year
Construction	16,838	269	575
Education & Health Services	38,813	348	815
Federal	8,646	78	-134
Financial Activities	9,326	122	387
Information	2,275	-27	-111
Leisure & Hospitality	26,556	236	904
Local	27,665	-2,562	-935
Manufacturing	10,926	317	582
Natural Resources & Mining	15,438	1,498	3,484
Nonclassified	39	26	11
Other Services	6,405	-61	142
Professional & Business Services	16,793	-344	-82
State	9,365	-854	-561
Trade, Transportation & Utilities	40,191	956	933
<b>TOTAL</b>	<b>229,276</b>	<b>2</b>	<b>6,010</b>

## Size Class Employment Composition 3rd Quarter 2011

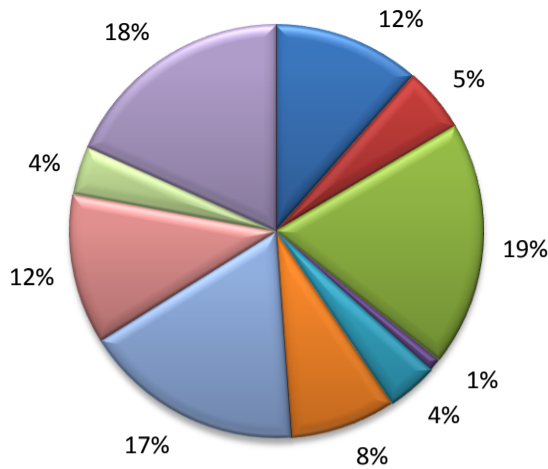


\*Counties in WDA: Aransas, Bee, Brooks, Duval, Jim Wells, Kenedy, Kleberg, Live Oak, McMullen, Nueces, Refugio, & San Patricio

Available at <http://www.tracer2.com/>

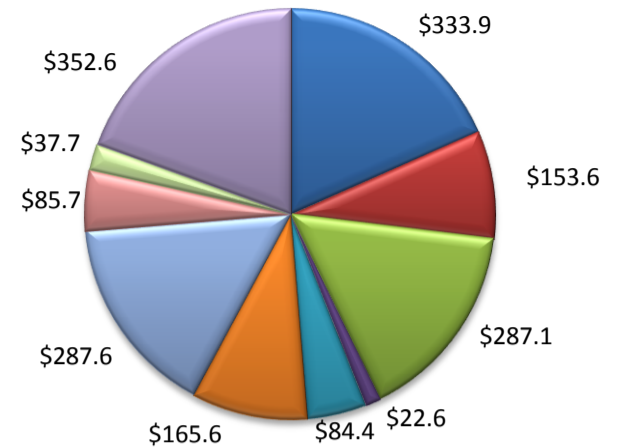
(Aransas, Nueces, San Patricio)

Industry Composition



- Mining, Logging, and Construction
- Manufacturing
- Trade, Transportation, and Utilities
- Information
- Financial Activities
- Professional and Business Services
- Education and Health Services
- Leisure and Hospitality
- Other Services
- Government

Wages by Industry (in millions)  
3rd Quarter 2011



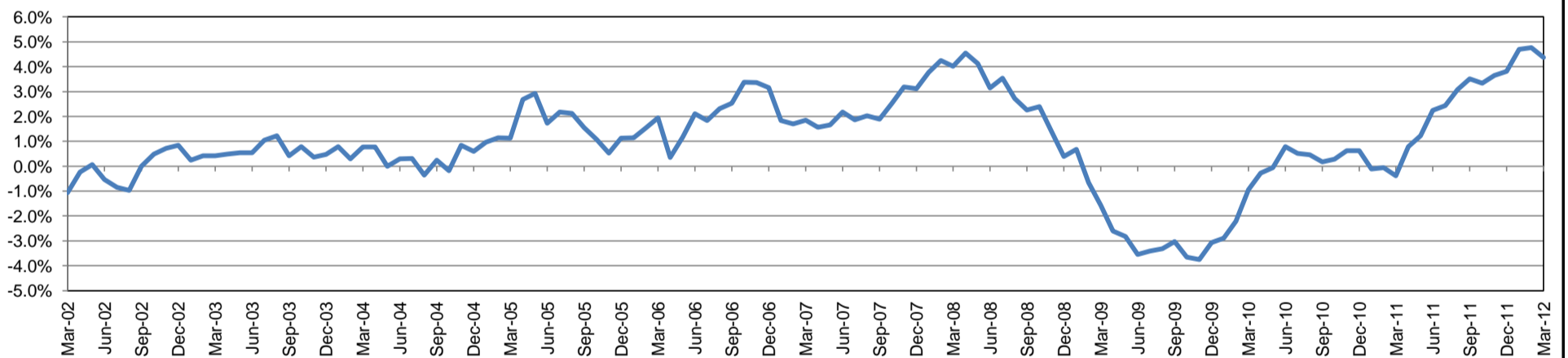
Employment by Industry

	Mar-12	Feb-12	Mar-11	Monthly Change		Annual Change	
				Actual	%	Actual	%
Total Nonfarm	186,200	184,700	178,400	1,500	0.8%	7,800	4.4%
Mining, Logging, and Construction	21,300	21,200	19,500	100	0.5%	1,800	9.2%
Manufacturing	9,500	9,500	9,200	0	0.0%	300	3.3%
Trade, Transportation, and Utilities	35,500	35,300	31,100	200	0.6%	4,400	14.2%
Information	1,900	1,900	2,000	0	0.0%	-100	-5.0%
Financial Activities	7,400	7,300	7,200	100	1.4%	200	2.8%
Professional and Business Services	15,300	15,200	15,200	100	0.7%	100	0.7%
Education and Health Services	32,200	32,100	31,100	100	0.3%	1,100	3.5%
Leisure and Hospitality	21,900	21,100	20,900	800	3.8%	1,000	4.8%
Other Services	7,100	7,100	6,900	0	0.0%	200	2.9%
Government	34,100	34,000	35,300	100	0.3%	-1,200	-3.4%

Industry Size Class September 2011

Size Class	Employees per firm	Number of Firms	Employment in Size Class	% Total Employment
9	1000+	17	41,334	23.3%
8	500-999	26	17,712	10.0%
7	250-499	45	14,761	8.3%
6	100-249	185	28,084	15.9%
5	50-99	305	21,351	12.1%
4	20-49	734	22,437	12.7%
3	10-19	1,051	14,209	8.0%
2	5-9	1,478	9,770	5.5%
1	1-4	3,605	7,444	4.2%
0	0	584	0	0.0%
Total		8,030	177,102	100.0%

Annual Growth Rate for Total Nonagricultural Employment



Unemployment Information (all estimates in thousands)

	Corpus Christi MSA				Texas (Actual)				United States (Actual)			
	C.L.F.	Emp.	Unemp.	Rate	C.L.F.	Emp.	Unemp.	Rate	C.L.F.	Emp.	Unemp.	Rate
Mar-12	220.4	206.1	14.3	6.5	12,532.1	11,655.7	876.4	7.0	154,316.0	141,412.0	12,904.0	8.4
Feb-12	218.9	204.1	14.8	6.8	12,463.8	11,570.0	893.8	7.2	154,114.0	140,684.0	13,430.0	8.7
Mar-11	215.2	197.9	17.3	8.0	12,390.9	11,408.6	982.3	7.9	153,022.0	138,962.0	14,060.0	9.2

Historical Unemployment Rates

