



# Coastal Bend Workforce Area

Area	Area Type	Latest Monthly Data October 2010				Previous Monthly Data September 2010				Year Ago October 2009			
		Labor Force	Employment	Unemployment	Rate	Labor Force	Employment	Unemployment	Rate	Labor Force	Employment	Unemployment	Rate
U.S.	Nation	153,652,000	139,749,000	13,903,000	9.0	153,854,000	139,715,000	14,140,000	9.2	153,635,000	139,088,000	14,547,000	9.5
Texas	State	12,158,580	11,193,351	965,229	7.9	12,165,441	11,209,163	956,278	7.9	12,014,365	11,056,066	958,299	8.0
Corpus Christi	MSA	213,068	196,232	16,836	7.9	212,037	195,313	16,724	7.9	208,812	193,217	15,595	7.5
Coastal Bend	WDA	284,025	261,620	22,405	7.9	282,826	260,500	22,326	7.9	279,383	257,574	21,809	7.8
Aransas	County	11,874	10,996	878	7.4	11,893	10,945	948	8.0	11,690	10,828	862	7.4
Bee	County	12,098	10,977	1,121	9.3	12,109	10,982	1,127	9.3	11,966	10,807	1,159	9.7
Brooks	County	3,407	3,079	328	9.6	3,412	3,090	322	9.4	3,349	3,008	341	10.2
Duval	County	5,293	4,714	579	10.9	5,246	4,677	569	10.8	5,403	4,738	665	12.3
Jim Wells	County	22,567	20,876	1,691	7.5	22,450	20,702	1,748	7.8	22,622	20,461	2,161	9.6
Kenedy	County	246	238	8	3.3	250	239	11	4.4	255	234	21	8.2
Kleberg	County	17,566	16,375	1,191	6.8	17,634	16,449	1,185	6.7	17,251	16,085	1,166	6.8
Live Oak	County	5,035	4,689	346	6.9	5,023	4,688	335	6.7	5,155	4,767	388	7.5
McMullen	County	367	341	26	7.1	359	336	23	6.4	353	329	24	6.8
Nueces	County	169,576	156,665	12,911	7.6	168,687	155,931	12,756	7.6	166,157	154,258	11,899	7.2
Refugio	County	4,377	4,099	278	6.4	4,306	4,024	282	6.5	4,216	3,927	289	6.9
San Patricio	County	31,619	28,571	3,048	9.6	31,457	28,437	3,020	9.6	30,966	28,132	2,834	9.2

Earnings for all occupations Coastal Bend, expressed as hourly rate (TWC):

**Coastal Bend - All Occupations - Average \$16.86/hr.; Entry level \$7.88/hr.; Experienced workers \$21.34/hr.; top 10% \$30.73/hr.**

**Texas - All Occupations - Average \$19.76/hr.; Entry level \$8.51/hr.; Experienced workers \$ 25.38/hr.; top 10% \$36.91/hr.**

Educational Attainment for population 25 years of age and older - Corpus Christi (Census American Fact Finder / American Community Survey):

**Less than 9<sup>th</sup> grade 9.3%; 9<sup>th</sup> thru 11<sup>th</sup> grade 11.8%; 12<sup>th</sup> grade and GED 26.7%; some college 24.7%; Associates degree 7.4%;**

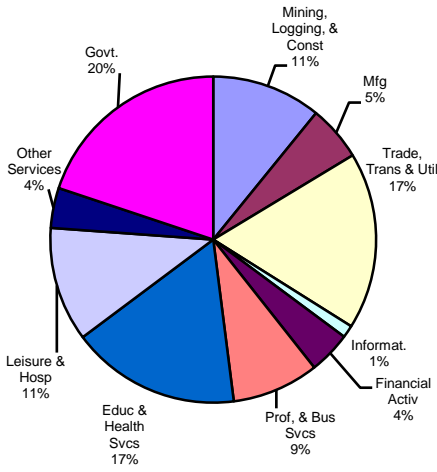
**Bachelors degree 13.0%; Graduate or Professional degrees 7.0%**

Median earnings Corpus Christi by education for persons 25 years of age & up (Census AFF / ACS): \$27,211 (\$36,380 male/ \$22,328 female)

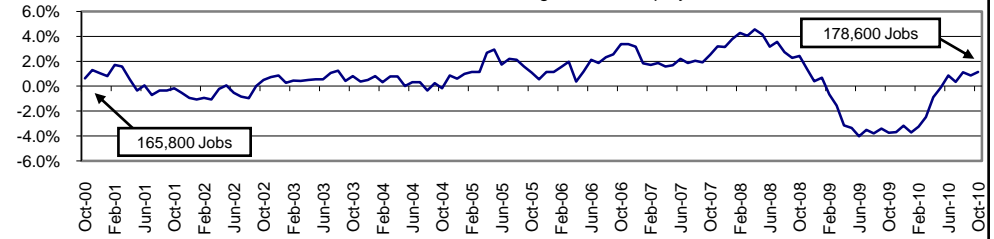
**Less than High School \$15,545      Some College or Associates \$31,460      Graduate & Professional \$54,717**

**High School & GED \$23,028      Bachelor's \$43,005**

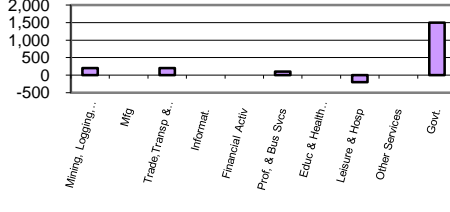
**Industry Composition**



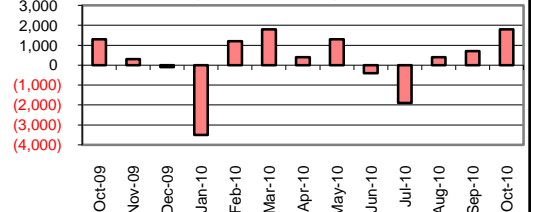
**Annual Growth Rate for Total NonAgricultural Employment**



**Monthly Change by Industry**



**Monthly Change in Total Nonag Employment**



**Employment by Industry**

	Employment			Monthly Change		Annual Change	
	Oct-2010	Sep-2010	Oct-2009	Actual	%	Actual	%
Total Nonagricultural	178,600	176,800	176,600	1,800	1.0%	2,000	1.1%
Mining, Logging, & Const	19,400	19,200	18,800	200	1.0%	600	3.2%
Manufacturing	9,800	9,800	9,600	0	0.0%	200	2.1%
Trade, Transp., & Utilities	31,400	31,200	31,200	200	0.6%	200	0.6%
Information	2,200	2,200	2,200	0	0.0%	0	0.0%
Financial Activities	7,500	7,500	7,600	0	0.0%	-100	-1.3%
Profes., & Business Svcs	15,400	15,300	15,100	100	0.7%	300	2.0%
Education & Health Svcs	30,000	30,000	29,300	0	0.0%	700	2.4%
Leisure & Hospitality	20,300	20,500	20,600	-200	-1.0%	-300	-1.5%
Other Services	7,100	7,100	6,900	0	0.0%	200	2.9%
Government	35,500	34,000	35,300	1,500	4.4%	200	0.6%

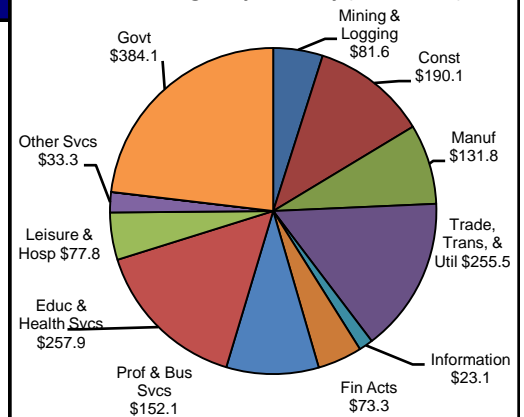
**Size Class of Industries as of June 2010**

Size Class	Employees Per Firm	Number of Firms	Employment in Size Class	% of Total Employment
9	1000+	18	42875	24.4%
8	500-999	23	15974	9.1%
7	250-499	46	15084	8.6%
6	100-249	184	27556	15.7%
5	50-99	285	19902	11.3%
4	20-49	765	23212	13.2%
3	10-19	993	13518	7.7%
2	5-9	1578	10461	5.9%
1	1-4	3566	7299	4.1%
0	0	570	0	0.0%
<b>TOTAL</b>		<b>8028</b>	<b>175881</b>	<b>100.0%</b>

**Comments for October 2010**

Total Nonagricultural Employment in the Corpus Christi MSA added 1,800 jobs over the month. October's job gain was the third consecutive month of job gains and was also the seventh over-the-month increase for 2010. This month's increase also surpassed the five-year average gain of 1,000 jobs. Since January, 5,300 jobs were added to Total Nonagricultural Employment, an increase of 1.1 percent for the year. The Construction of Buildings industry added 100 jobs over the month. So far this year, this industry has recorded no over-the-month employment decreases. Since January, employment increased by 300 jobs. Local Government added 1,200 jobs over the month and matched historic and seasonal trends. Despite the recent increases, Local Government had a 0.9 percent decrease for the previous twelve months.

**2nd Quarter Wages by Industry (in millions)**



**Unemployment Information** (all estimates are in thousands)

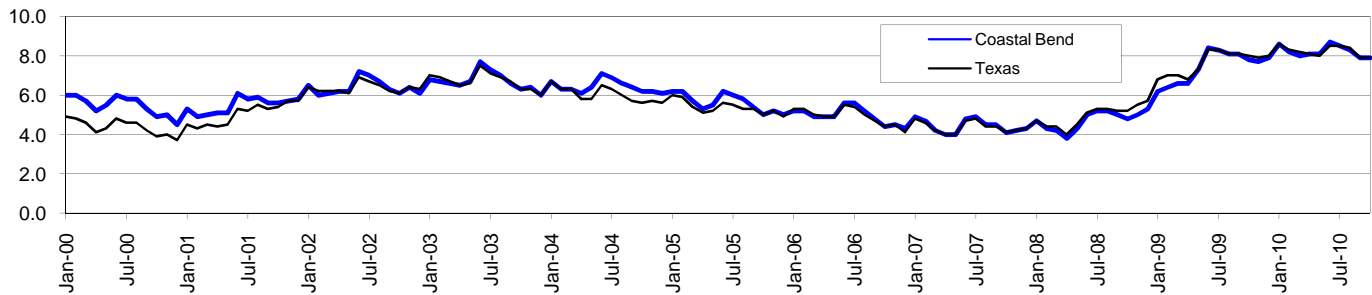
	Corpus Christi MSA				Texas (Actual)				United States (Actual)			
	C.L.F.	Emp.	Unemp.	% Rate	C.L.F.	Emp.	Unemp.	% Rate	C.L.F.	Emp.	Unemp.	% Rate
Oct-2010	213.0	196.2	16.8	7.9	12,158.6	11,193.4	965.2	7.9	153,652.0	139,749.0	13,903.0	9.0
Sep-2010	212.0	195.3	16.7	7.9	12,165.5	11,209.2	956.3	7.9	153,854.0	139,715.0	14,140.0	9.2
Oct-2009	208.8	193.2	15.6	7.5	12,014.4	11,056.1	958.3	8.0	153,635.0	139,088.0	14,547.0	9.5

# Coastal Bend Workforce Development Area\*

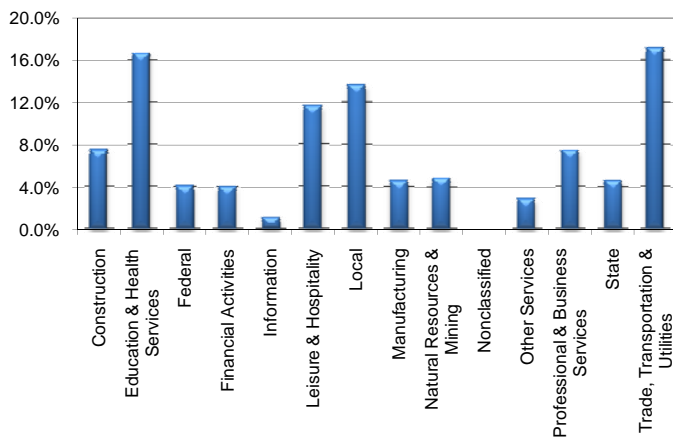
## October 2010

Coastal Bend WDA					Texas				
	CLF	Employed	Unemployed	Rate		CLF	Employed	Unemployed	Rate
<b>Oct-10</b>	284,025	261,620	22,405	7.9	<b>Oct-10</b>	12,158,580	11,193,351	965,229	7.9
<b>Sep-10</b>	282,826	260,500	22,326	7.9	<b>Sep-10</b>	12,165,441	11,209,163	956,278	7.9
<b>Oct-09</b>	279,383	257,574	21,809	7.8	<b>Oct-09</b>	12,014,365	11,056,066	958,299	8.0

### Historical Unemployment Rates



### Coastal Bend WDA Industry Composition 2nd Quarter 2010



### Total WDA Claims

	Oct-10	Sep-10	Oct-09	OTY
<b>Initial</b>	2,101	2,155	2,466	<b>-365</b>
<b>Continued</b>	7,819	8,642	11,304	<b>-3,485</b>
<b>Continued Claims for the Week of the 12th</b>				
<b>Continued</b>	6,747	7,137	8,031	<b>-1,284</b>

### Texas Unemployment Insurance Claims Filed

	Oct-10	Sep-10	Oct-09	OTY
<b>Initial</b>	87,633	83,025	107,934	<b>-20,301</b>
<b>Continued</b>	880,638	859,823	1,085,906	<b>-205,268</b>
<b>Continued Claims for the Week of the 12th</b>				
<b>Continued</b>	195,886	207,868	263,436	<b>-67,550</b>

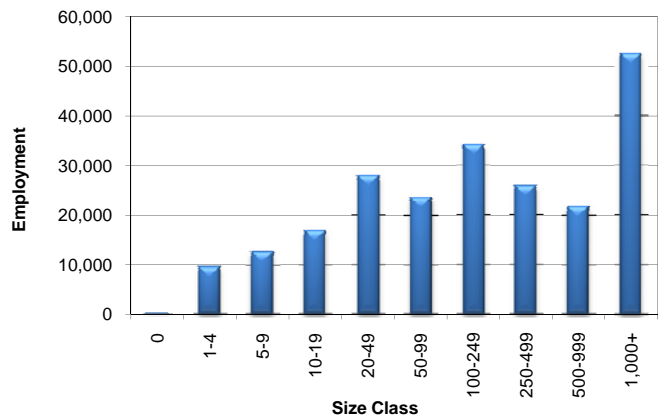
### Coastal Bend WDA Average Weekly Wage

	Coastal Bend	WDA Qtr. Chg.	Texas
<b>2nd Quarter 2010</b>	\$711.82	\$26.93	\$863.94
<b>1st Quarter 2010</b>	\$684.89	<b>WDA OTY Chg.</b>	\$891.60
<b>2nd Quarter 2009</b>	\$684.44	\$27.38	\$838.52

### NAICS Covered Employment Quarterly Data 2nd Quarter 2010

SUPER SECTOR	Employment	Change	
		Quarter	Year
Construction	16,744	-664	-345
Education & Health Services	37,525	384	1,272
Federal	9,153	656	591
Financial Activities	9,070	43	-286
Information	2,464	4	-152
Leisure & Hospitality	26,095	1,763	175
Local	30,846	158	508
Manufacturing	10,195	-124	-883
Natural Resources & Mining	11,027	700	281
Nonclassified	35	15	-6
Other Services	6,375	210	-127
Professional & Business Services	16,810	-128	-28
State	10,312	-19	366
Trade, Transportation & Utilities	38,700	496	-569
<b>TOTAL</b>	<b>225,351</b>	<b>3,494</b>	<b>797</b>

### Size Class Employment Composition 2nd Quarter 2010



\*Counties in WDA: Aransas, Bee, Brooks, Duval, Jim Wells, Kenedy, Kleberg, Live Oak, McMullen, Nueces, Refugio, & San Patricio