



Coastal Bend Workforce Area

Area	Area Type	Latest Monthly Data November 2010				Previous Monthly Data October 2010				Year Ago November 2009			
		Labor Force	Employment	Unemployment	Rate	Labor Force	Employment	Unemployment	Rate	Labor Force	Employment	Unemployment	Rate
U.S.	Nation	153,698,000	139,415,000	14,282,000	9.3	153,652,000	139,749,000	13,903,000	9.0	153,539,000	139,132,000	14,407,000	9.4
Texas	State	12,226,910	11,214,627	1,012,283	8.3	12,158,310	11,193,477	964,833	7.9	12,055,249	11,105,089	950,160	7.9
Corpus Christi	MSA	214,868	196,802	18,066	8.4	212,823	196,000	16,823	7.9	209,525	193,966	15,559	7.4
Coastal Bend	WDA	285,510	261,595	23,915	8.4	283,684	261,298	22,386	7.9	280,263	258,609	21,654	7.7
Aransas	County	11,973	11,028	945	7.9	11,857	10,983	874	7.4	11,735	10,870	865	7.4
Bee	County	12,114	10,909	1,205	9.9	12,082	10,962	1,120	9.3	11,981	10,851	1,130	9.4
Brooks	County	3,386	3,050	336	9.9	3,403	3,075	328	9.6	3,380	3,043	337	10.0
Duval	County	5,277	4,674	603	11.4	5,287	4,708	579	11.0	5,385	4,752	633	11.8
Jim Wells	County	22,325	20,585	1,740	7.8	22,536	20,846	1,690	7.5	22,551	20,462	2,089	9.3
Kenedy	County	248	237	11	4.4	246	238	8	3.3	256	235	21	8.2
Kleberg	County	17,563	16,288	1,275	7.3	17,541	16,351	1,190	6.8	17,380	16,194	1,186	6.8
Live Oak	County	5,028	4,666	362	7.2	5,028	4,683	345	6.9	5,210	4,825	385	7.4
McMullen	County	366	339	27	7.4	367	341	26	7.1	364	340	24	6.6
Nueces	County	170,828	157,120	13,708	8.0	169,388	156,480	12,908	7.6	166,616	154,856	11,760	7.1
Refugio	County	4,336	4,045	291	6.7	4,372	4,094	278	6.4	4,230	3,940	290	6.9
San Patricio	County	32,066	28,654	3,412	10.6	31,577	28,537	3,040	9.6	31,175	28,241	2,934	9.4

Earnings for all occupations Coastal Bend, expressed as hourly rate (TWC):

Coastal Bend - All Occupations - Average \$16.86/hr.; Entry level \$7.88/hr.; Experienced workers \$21.34/hr.; top 10% \$30.73/hr.

Texas - All Occupations - Average \$19.76/hr.; Entry level \$8.51/hr.; Experienced workers \$ 25.38/hr.; top 10% \$36.91/hr.

Educational Attainment for population 25 years of age and older - Corpus Christi (Census American Fact Finder / American Community Survey):

Less than 9th grade 9.3%; 9th thru 11th grade 11.8%; 12th grade and GED 26.7%; some college 24.7%; Associates degree 7.4%;

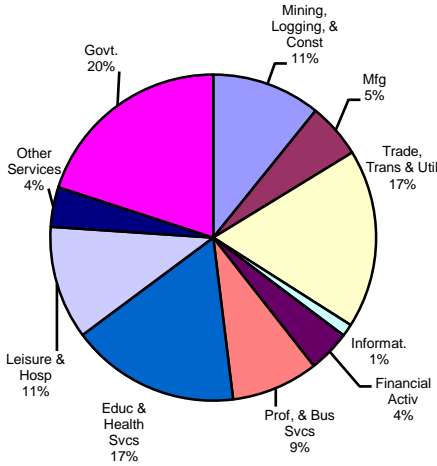
Bachelors degree 13.0%; Graduate or Professional degrees 7.0%

Median earnings Corpus Christi by education for persons 25 years of age & up (Census AFF / ACS): \$27,211 (\$36,380 male/ \$22,328 female)

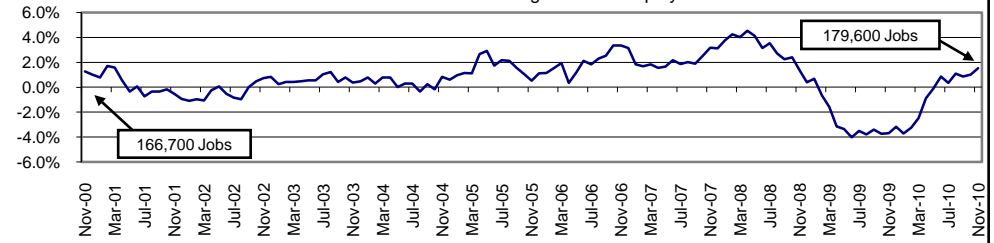
Less than High School \$15,545 Some College or Associates \$31,460 Graduate & Professional \$54,717

High School & GED \$23,028 Bachelor's \$43,005

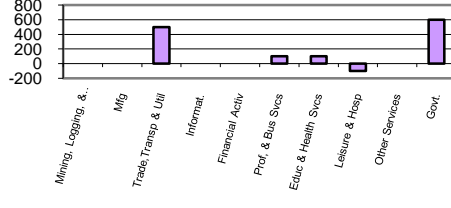
Industry Composition



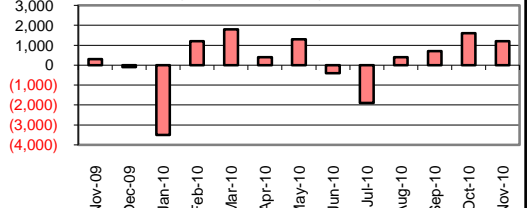
Annual Growth Rate for Total NonAgricultural Employment



Monthly Change by Industry



Monthly Change in Total Nonag Employment



Employment by Industry

				Monthly Change		Annual Change	
	Nov-2010	Oct-2010	Nov-2009	Actual	%	Actual	%
Total Nonagricultural	179,600	178,400	176,900	1,200	0.7%	2,700	1.5%
Mining, Logging, & Const	19,400	19,400	18,700	0	0.0%	700	3.7%
Manufacturing	9,800	9,800	9,600	0	0.0%	200	2.1%
Trade, Transp., & Utilities	31,900	31,400	31,600	500	1.6%	300	1.0%
Information	2,200	2,200	2,200	0	0.0%	0	0.0%
Financial Activities	7,500	7,500	7,600	0	0.0%	-100	-1.3%
Profes., & Business Svcs	15,500	15,400	15,100	100	0.7%	400	2.7%
Education & Health Svcs	30,100	30,000	29,300	100	0.3%	800	2.7%
Leisure & Hospitality	20,200	20,300	20,400	-100	-0.5%	-200	-1.0%
Other Services	7,100	7,100	6,900	0	0.0%	200	2.9%
Government	35,900	35,300	35,500	600	1.7%	400	1.1%

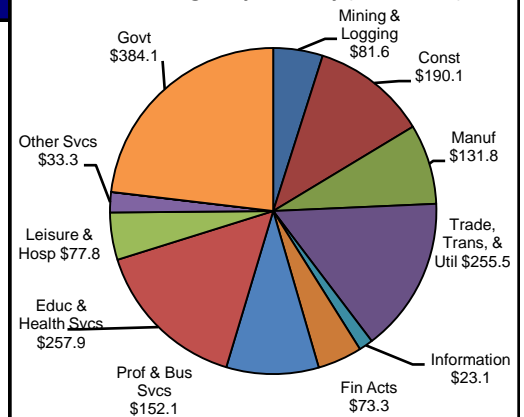
Size Class of Industries as of June 2010

Size Class	Employees Per Firm	Number of Firms	Employment in Size Class	% of Total Employment
9	1000+	18	42875	24.4%
8	500-999	23	15974	9.1%
7	250-499	46	15084	8.6%
6	100-249	184	27556	15.7%
5	50-99	285	19902	11.3%
4	20-49	765	23212	13.2%
3	10-19	993	13518	7.7%
2	5-9	1578	10461	5.9%
1	1-4	3566	7299	4.1%
0	0	570	0	0.0%
TOTAL		8028	175881	100.0%

Comments for November 2010

The Corpus Christi MSA added 1,200 jobs over the month in Total Nonagricultural Employment. This increase bested the five-year average increase by four hundred jobs, and was the fourth consecutive month of employment increases. The area also grew 1.5 percent over the previous twelve months and added 2,700 jobs. General Merchandise Stores increased 4.8 percent in employment over the month. This seasonal increase was attributed to the Christmas shopping season. This month's increase was also the first over-the-month increase since May. Since last November, employment grew at 2.3 percent. The Local Government Sector added 500 jobs over the month. This growth marked the fourth consecutive month of employment increases and brought the 2010 job gains to a total of 500 jobs. Despite the gains in 2010, employment decreased slightly from the previous twelve months by -0.4 percent.

2nd Quarter Wages by Industry (in millions)



Unemployment Information (all estimates are in thousands)

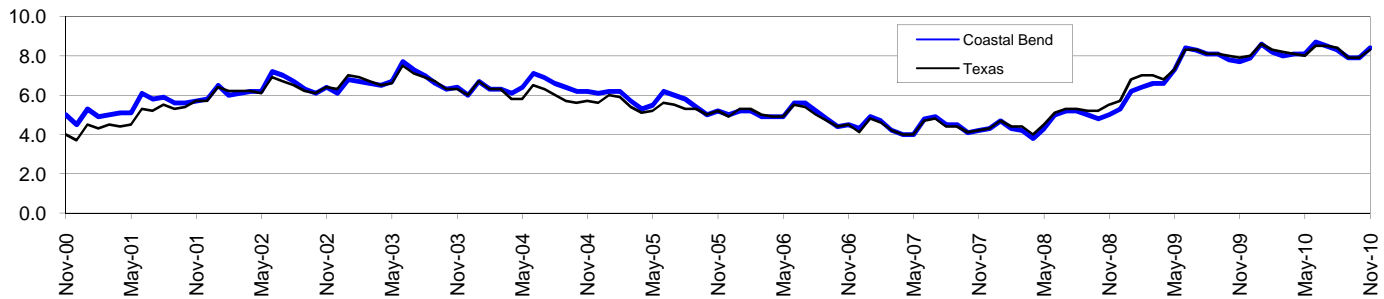
	Corpus Christi MSA				Texas (Actual)				United States (Actual)			
	C.L.F.	Emp.	Unemp.	% Rate	C.L.F.	Emp.	Unemp.	% Rate	C.L.F.	Emp.	Unemp.	% Rate
Nov-2010	214.9	196.8	18.1	8.4	12,226.9	11,214.6	1,012.3	8.3	153,698.0	139,415.0	14,282.0	9.3
Oct-2010	212.8	196.0	16.8	7.9	12,158.3	11,193.5	964.8	7.9	153,652.0	139,749.0	13,903.0	9.0
Nov-2009	209.6	194.0	15.6	7.4	12,055.3	11,105.1	950.2	7.9	153,539.0	139,132.0	14,407.0	9.4

Coastal Bend Workforce Development Area*

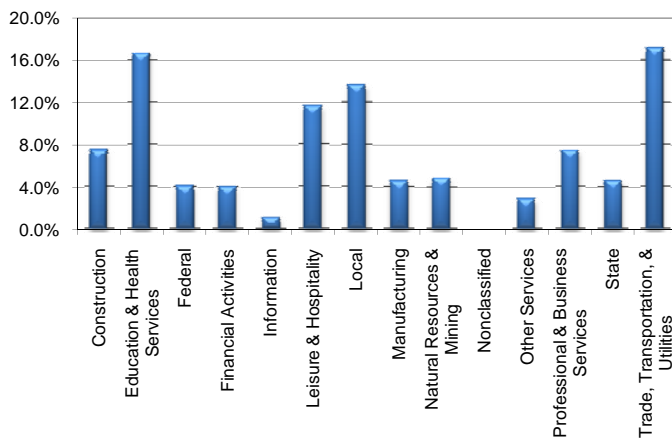
November 2010

Coastal Bend WDA					Texas				
	CLF	Employed	Unemployed	Rate		CLF	Employed	Unemployed	Rate
Nov-10	285,510	261,595	23,915	8.4	Nov-10	12,226,910	11,214,627	1,012,283	8.3
Oct-10	283,684	261,298	22,386	7.9	Oct-10	12,158,310	11,193,477	964,833	7.9
Nov-09	280,263	258,609	21,654	7.7	Nov-09	12,055,249	11,105,089	950,160	7.9

Historical Unemployment Rates



Coastal Bend WDA Industry Composition 2nd Quarter 2010



Total WDA Claims

	Nov-10	Oct-10	Nov-09	OTY
Initial	2,526	2,101	2,477	49
Continued	9,221	7,819	12,681	-3,460
Continued Claims for the Week of the 12th				
Continued	7,587	6,811	8,095	-508

Texas Unemployment Insurance Claims Filed

	Nov-10	Oct-10	Nov-09	OTY
Initial	85,666	87,633	98,560	-12,894
Continued	887,513	880,638	1,219,676	-332,163
Continued Claims for the Week of the 12th				
Continued	190,017	195,886	254,048	-64,031

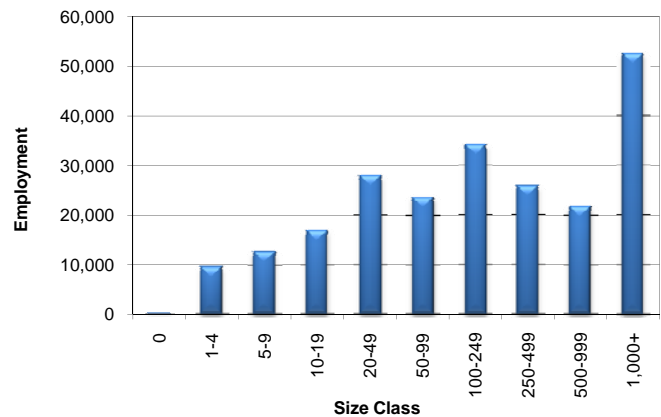
Coastal Bend WDA Average Weekly Wage

	Coastal Bend	WDA Qtr. Chg.	Texas
2nd Quarter 2010	\$711.82	\$26.93	\$863.94
1st Quarter 2010	\$684.89	WDA OTY Chg.	\$891.60
2nd Quarter 2009	\$684.44	\$27.38	\$838.52

NAICS Covered Employment Quarterly Data 2nd Quarter 2010

SUPER SECTOR	Employment	Change	
		Quarter	Year
Construction	16,744	-664	-345
Education & Health Services	37,525	384	1,272
Federal	9,153	656	591
Financial Activities	9,070	43	-286
Information	2,464	4	-152
Leisure & Hospitality	26,095	1,763	175
Local	30,846	158	508
Manufacturing	10,195	-124	-883
Natural Resources & Mining	11,027	700	281
Nonclassified	35	15	-6
Other Services	6,375	210	-127
Professional & Business Services	16,810	-128	-28
State	10,312	-19	366
Trade, Transportation, & Utilities	38,700	496	-569
TOTAL	225,351	3,494	797

Size Class Employment Composition 2nd Quarter 2010



*Counties in WDA: Aransas, Bee, Brooks, Duval, Jim Wells, Kenedy, Kleberg, Live Oak, McMullen, Nueces, Refugio, & San Patricio