

Coastal Bend Workforce Area

(Not Seasonally Adjusted Unemployment Rates by WDA, MSA, & County)

Area	Area Type	Latest Monthly Data March 2017						Previous Monthly Data February 2017				Year Ago March 2016			
		Labor Force	Employment	Unemployment	Rate	M+-	Y+-	Labor Force	Employment	Unemployment	Rate	Labor Force	Employment	Unemployment	Rate
United States	Nation	160,201,000	153,000,000	7,202,000	4.5	-0.2	-0.5	160,056,000	152,528,000	7,528,000	4.7	159,278,000	151,301,000	7,977,000	5.0
Texas	State	13,519,716	12,842,241	677,475	5.0	0.1	0.4	13,459,664	12,799,058	660,606	4.9	13,201,461	12,585,876	604,585	4.6
Corpus Christi	MSA	209,900	196,069	13,831	6.6	-0.2	0.8	208,622	194,386	14,236	6.8	206,765	194,855	11,910	5.8
Coastal Bend	WDA	265,790	247,337	18,453	6.9	-0.3	0.5	264,326	245,262	19,064	7.2	265,999	249,053	16,946	6.4
Aransas	County	10,272	9,584	688	6.7	-0.4	1.2	10,200	9,480	720	7.1	10,088	9,532	556	5.5
Bee	County	10,145	9,358	787	7.8	-0.2	0.5	10,138	9,325	813	8.0	10,463	9,696	767	7.3
Brooks	County	2,337	2,080	257	11.0	-0.1	-1.4	2,337	2,077	260	11.1	2,518	2,207	311	12.4
Duval	County	4,651	4,155	496	10.7	-0.4	-0.7	4,657	4,138	519	11.1	4,965	4,397	568	11.4
Jim Wells	County	16,412	14,811	1,601	9.8	-0.5	-0.8	16,507	14,810	1,697	10.3	18,132	16,219	1,913	10.6
Kenedy	County	214	202	12	5.6	0.0	0.6	195	184	11	5.6	240	228	12	5.0
Kleberg	County	14,138	13,154	984	7.0	-0.2	0.3	13,936	12,936	1,000	7.2	14,474	13,510	964	6.7
Live Oak	County	4,912	4,616	296	6.0	-0.6	0.2	4,896	4,575	321	6.6	5,263	4,958	305	5.8
Nueces	County	168,584	158,149	10,435	6.2	-0.3	0.7	167,722	156,896	10,826	6.5	166,287	157,135	9,152	5.5
Refugio	County	3,081	2,892	189	6.1	-0.7	-0.1	3,038	2,831	207	6.8	3,179	2,983	196	6.2
San Patricio	County	31,044	28,336	2,708	8.7	-0.1	1.5	30,700	28,010	2,690	8.8	30,390	28,188	2,202	7.2

(M+-) Change in unemployment rate from last month (Increase) (Decrease)

(Y+-) Change in unemployment rate from last year (Increase) (Decrease)

- Earnings for all occupations Coastal Bend, expressed as hourly rate (TWC):

Coastal Bend	All Occupations-	Average \$18.35/hr.	Entry level \$8.58/hr.	Experienced workers \$23.24/hr.	Top 10% \$33.56/hr.
Texas	All Occupations-	Average \$20.97/hr.	Entry level \$8.88/hr.	Experienced workers \$ 27.02/hr.	Top 10% \$39.64/hr.

- Educational Attainment for population 25 years of age and older - Corpus Christi (Census American Fact Finder/American Community Survey):

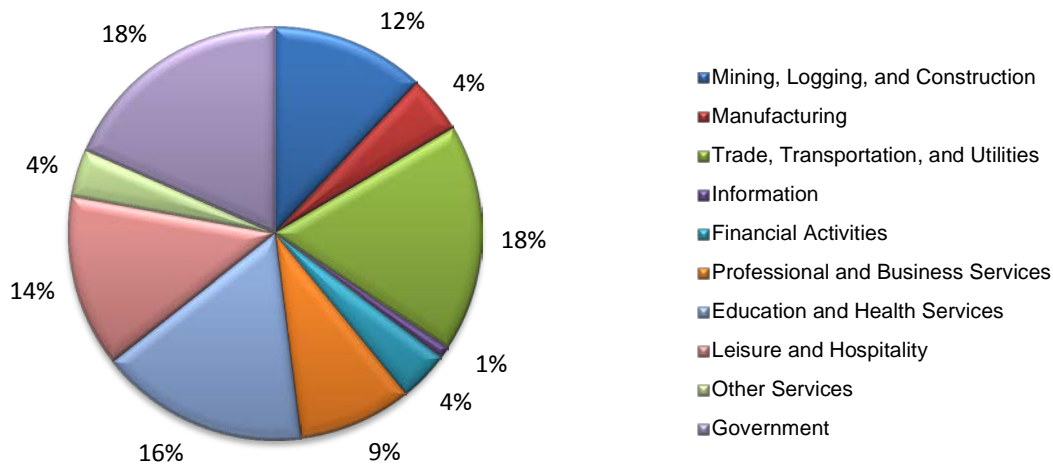
Less than 9th grade	8.7%	12th grade & GED	27.7%	Associates degree	7.0%	Graduate or Professional degrees	8.4%
9th thru 11th grade	9.3%	Some College	25.1%	Bachelors degree	13.8%		

- Median earnings Corpus Christi by education for persons 25 years of age & up (Census AFF/ACS): **\$27,211** (\$36,380 male/ \$22,328 female)

Less than High School	\$15,437	Some College or Associates	\$28,739	Graduate or Professional	\$56,681
High School & GED	\$26,818	Bachelor's	\$44,078		

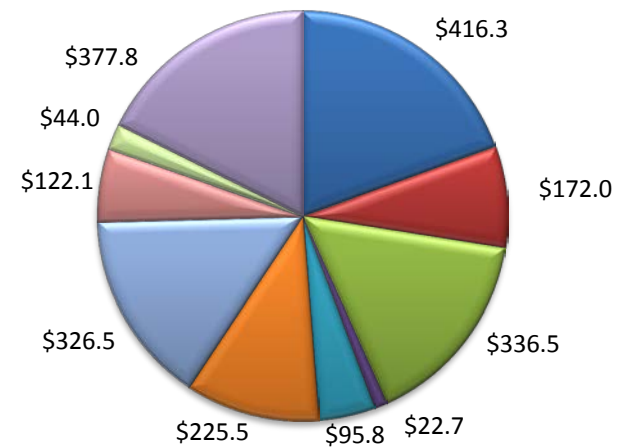
(Aransas, Nueces, San Patricio)

Industry Composition



Wages by Industry (in millions)

3rd Quarter 2016



Employment by Industry

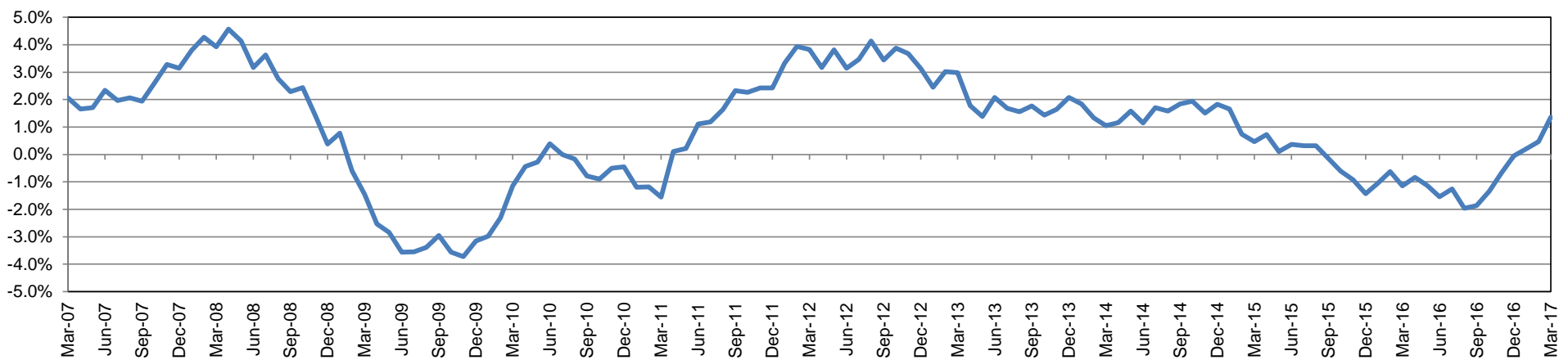
	Mar-17	Feb-17	Mar-16	Monthly Change		Annual Change	
				Actual	%	Actual	%
Total Nonfarm	193,300	191,500	190,700	1,800	0.9%	2,600	1.4%
Mining, Logging, and Construction	23,200	23,000	22,500	200	0.9%	700	3.1%
Manufacturing	8,700	8,700	9,000	0	0.0%	-300	-3.3%
Trade, Transportation, and Utilities	34,400	34,000	34,300	400	1.2%	100	0.3%
Information	1,800	1,800	1,800	0	0.0%	0	0.0%
Financial Activities	7,600	7,500	7,700	100	1.3%	-100	-1.3%
Professional and Business Services	17,100	16,800	17,000	300	1.8%	100	0.6%
Education and Health Services	31,600	31,600	30,700	0	0.0%	900	2.9%
Leisure and Hospitality	26,100	25,600	25,600	500	2.0%	500	2.0%
Other Services	7,200	7,100	7,100	100	1.4%	100	1.4%
Government	35,600	35,400	35,000	200	0.6%	600	1.7%

Industry Size Class

September 2016

Size Class	Employees per firm	Number of Firms	Employment in Size Class	% Total Employment
9	1000+	19	45,298	24.3%
8	500-999	22	14,218	7.6%
7	250-499	48	16,080	8.6%
6	100-249	198	30,446	16.3%
5	50-99	319	22,541	12.1%
4	20-49	826	25,487	13.7%
3	10-19	1,115	15,260	8.2%
2	5-9	1,481	9,817	5.3%
1	1-4	3,514	7,295	3.9%
0	0	725	0	0.0%
Total		8,267	186,442	100.0%

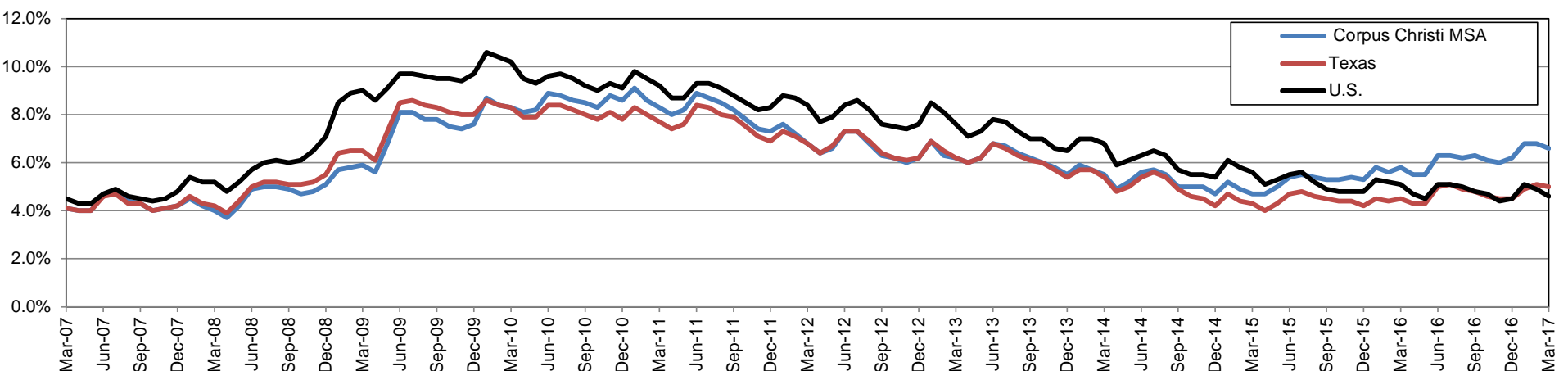
Annual Growth Rate for Total Nonagricultural Employment



Unemployment Information (all estimates in thousands)

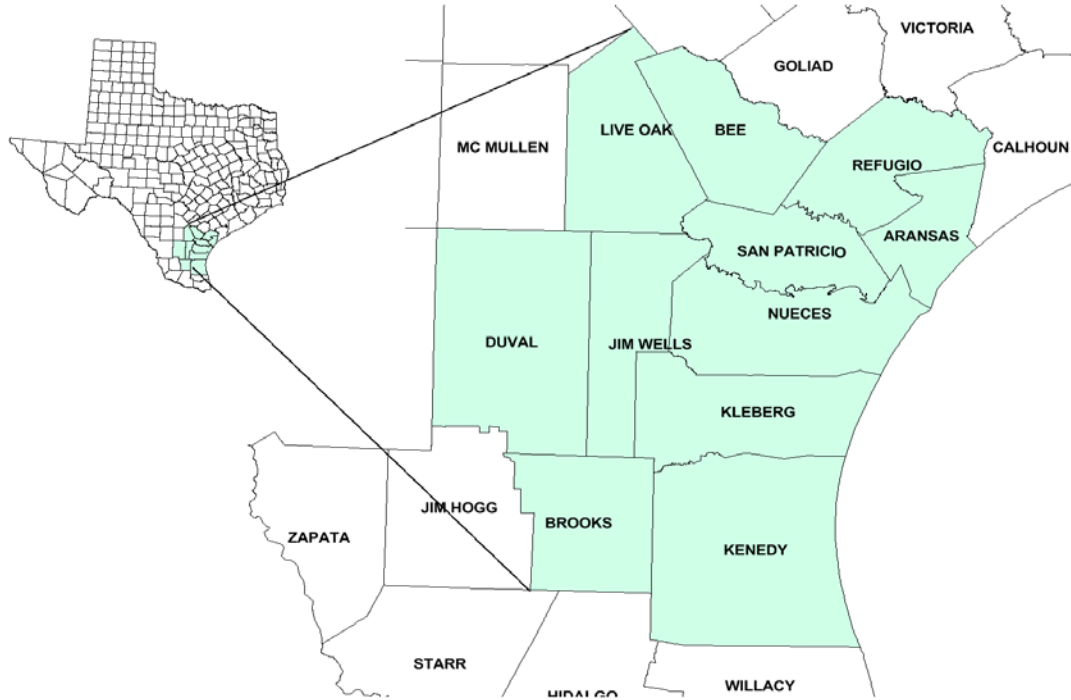
	Corpus Christi MSA				Texas (Actual)				United States (Actual)			
	C.L.F.	Emp.	Unemp.	Rate	C.L.F.	Emp.	Unemp.	Rate	C.L.F.	Emp.	Unemp.	Rate
Mar-17	209.9	196.1	13.8	6.6	13,513.7	12,838.1	675.6	5.0	159,912.0	152,628.0	7,284.0	4.6
Feb-17	208.6	194.4	14.2	6.8	13,471.3	12,777.8	693.5	5.1	159,482.0	151,594.0	7,887.0	4.9
Mar-16	206.8	194.9	11.9	5.8	13,239.7	12,648.9	590.8	4.5	158,854.0	150,738.0	8,116.0	5.1

Historical Unemployment Rates



Coastal Bend Workforce Development Area

March 2017



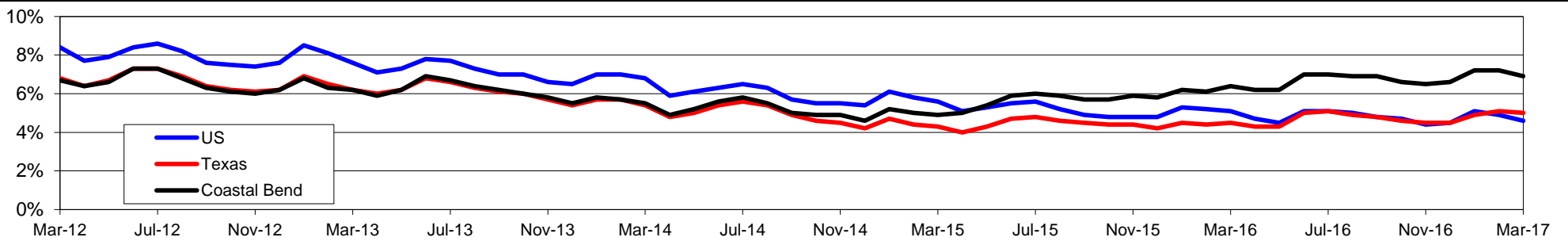
WDA Labor Force Statistics				
	Mar-17	Feb-17	Mar-16	OTY
CLF	265,790	264,326	265,999	-209
Employed	247,337	245,262	249,053	-1,716
Unemployed	18,453	19,064	16,946	1,507
Rate	6.9%	7.2%	6.4%	0.5%

Texas Labor Force Statistics				
	Mar-17	Feb-17	Mar-16	OTY
CLF	13,513,734	13,471,275	13,239,718	274,016
Employed	12,838,130	12,777,787	12,648,877	189,253
Unemployed	675,604	693,488	590,841	84,763
Rate	5.0%	5.1%	4.5%	0.5%

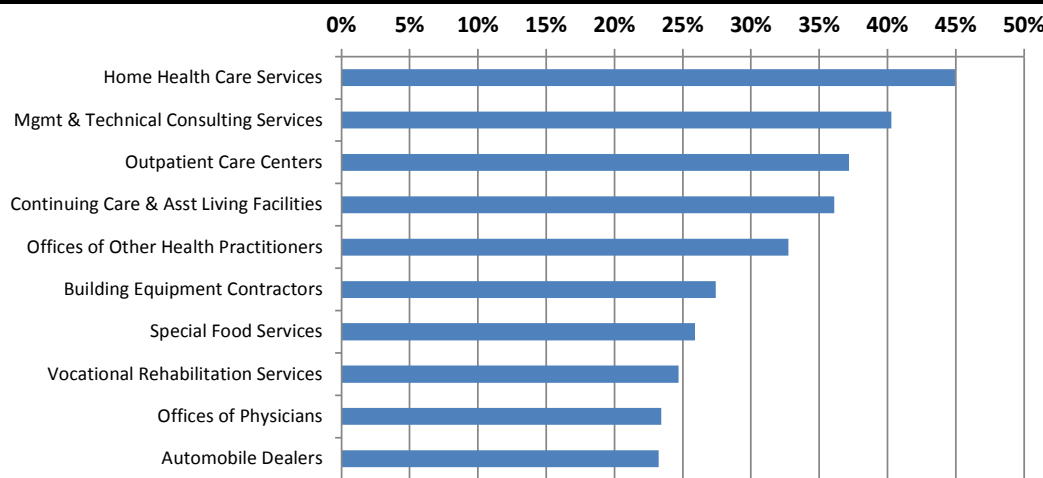
US Labor Force Statistics				
	Mar-17	Feb-17	Mar-16	OTY
CLF	159,912,000	159,482,000	158,854,000	1,058,000
Employed	152,628,000	151,594,000	150,738,000	1,890,000
Unemployed	7,284,000	7,887,000	8,116,000	-832,000
Rate	4.6%	4.9%	5.1%	-0.5%

Continued Claims for the Week of the 12th				
	Mar-17	Feb-17	Mar-16	OTY
WDA	3,512	3,731	5,418	-1,906
Texas	122,950	132,086	145,342	-22,392

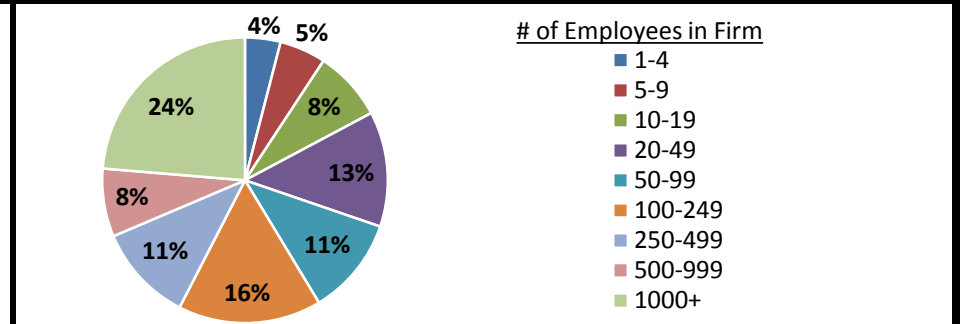
Historical Unemployment Rates



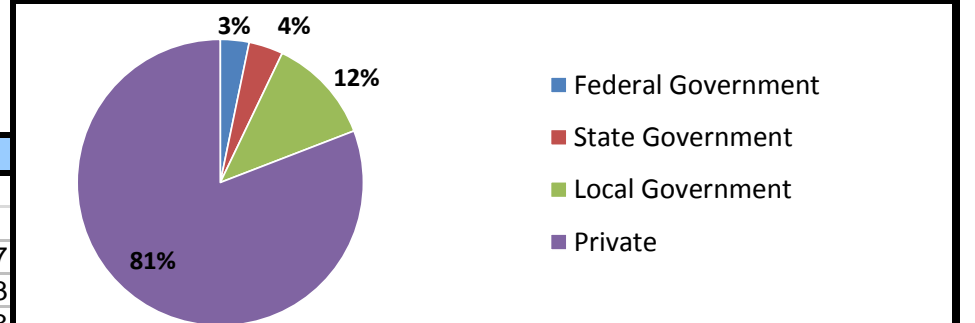
Projected Fastest Growing Industries in WDA (% growth 2014-2024)



Employment by Size Class (3rd Quarter 2016)



Employment by Ownership (3rd Quarter 2016)



Average Weekly Wage (3rd Quarter 2016)

	Q3 2016	Q2 2016	Q3 2015	Change	
				Quarter	Year
WDA	\$856	\$816	\$839	\$40	\$17
Texas	\$1,042	\$1,000	\$999	\$42	\$43
US	\$1,027	\$988	\$974	\$39	\$53

Employment by Industry (3rd Quarter 2016, Percent Change)

Industry	Employment	% of total	% Change	
			Quarter	Year
Natural resources and mining	9,451	4.0%	0.5%	-30.2%
Construction	23,153	9.9%	1.2%	11.3%
Manufacturing	12,966	5.5%	-1.6%	-9.4%
Trade, transportation and utilities	43,972	18.8%	0.2%	-4.4%
Information	2,199	0.9%	-2.3%	-8.6%
Financial activities	9,356	4.0%	-0.6%	-10.2%
Professional and business services	18,158	7.8%	-1.8%	-4.9%
Education and health services	63,951	27.3%	-2.4%	3.3%
Leisure and hospitality	32,456	13.9%	-0.3%	-1.3%
Other services	6,471	2.8%	-0.6%	-9.8%
Public administration	12,032	5.1%	0.8%	2.1%
Total	234,165	100.0%	-0.8%	-2.5%

Employment by Industry (3rd Quarter 2016)

