

Coastal Bend Workforce Area

(Not Seasonally Adjusted Unemployment Rates by WDA, MSA, & County)

Area	Area Type	Latest Monthly Data January 2017						Previous Monthly Data December 2016				Year Ago January 2016			
		Labor Force	Employment	Unemployment	Rate	M+-	Y+-	Labor Force	Employment	Unemployment	Rate	Labor Force	Employment	Unemployment	Rate
United States	Nation	159,716,000	152,081,000	7,635,000	4.8	0.1	-0.1	159,640,000	152,111,000	7,529,000	4.7	158,362,000	150,533,000	7,829,000	4.9
Texas	State	13,400,828	12,758,324	642,504	4.8	0.2	0.3	13,434,978	12,810,651	624,327	4.6	13,167,773	12,573,533	594,240	4.5
Corpus Christi	MSA	205,920	191,848	14,072	6.8	0.6	1.0	206,001	193,227	12,774	6.2	203,898	192,169	11,729	5.8
Coastal Bend	WDA	261,041	242,186	18,855	7.2	0.6	1.0	261,754	244,444	17,310	6.6	261,796	245,517	16,279	6.2
Aransas	County	10,039	9,338	701	7.0	0.9	1.3	10,030	9,421	609	6.1	9,906	9,337	569	5.7
Bee	County	9,936	9,149	787	7.9	0.2	1.0	10,088	9,316	772	7.7	10,069	9,374	695	6.9
Brooks	County	2,306	2,047	259	11.2	0.8	-0.3	2,341	2,098	243	10.4	2,454	2,173	281	11.5
Duval	County	4,653	4,150	503	10.8	0.5	0.7	4,667	4,185	482	10.3	4,865	4,374	491	10.1
Jim Wells	County	16,517	14,809	1,708	10.3	0.5	0.9	16,641	15,009	1,632	9.8	17,961	16,273	1,688	9.4
Kenedy	County	188	178	10	5.3	-0.5	0.9	189	178	11	5.8	215	206	9	4.2
Kleberg	County	13,606	12,614	992	7.3	0.8	0.7	13,860	12,957	903	6.5	13,862	12,943	919	6.6
Live Oak	County	4,888	4,576	312	6.4	0.5	1.2	4,953	4,663	290	5.9	5,358	5,082	276	5.2
Nueces	County	165,562	154,889	10,673	6.4	0.5	1.0	165,715	155,981	9,734	5.9	164,135	155,121	9,014	5.5
Refugio	County	3,027	2,815	212	7.0	0.3	0.9	3,014	2,811	203	6.7	3,114	2,923	191	6.1
San Patricio	County	30,319	27,621	2,698	8.9	0.9	1.7	30,256	27,825	2,431	8.0	29,857	27,711	2,146	7.2

(M+-) Change in unemployment rate from last month (Increase) (Decrease)

(Y+-) Change in unemployment rate from last year (Increase) (Decrease)

- Earnings for all occupations Coastal Bend, expressed as hourly rate (TWC):

Coastal Bend	All Occupations-	Average \$18.35/hr.	Entry level \$8.58/hr.	Experienced workers \$23.24/hr.	Top 10% \$33.56/hr.
Texas	All Occupations-	Average \$20.97/hr.	Entry level \$8.88/hr.	Experienced workers \$ 27.02/hr.	Top 10% \$39.64/hr.

- Educational Attainment for population 25 years of age and older - Corpus Christi (Census American Fact Finder/American Community Survey):

Less than 9th grade	8.7%	12th grade & GED	27.7%	Associates degree	7.0%	Graduate or Professional degrees	8.4%
9th thru 11th grade	9.3%	Some College	25.1%	Bachelors degree	13.8%		

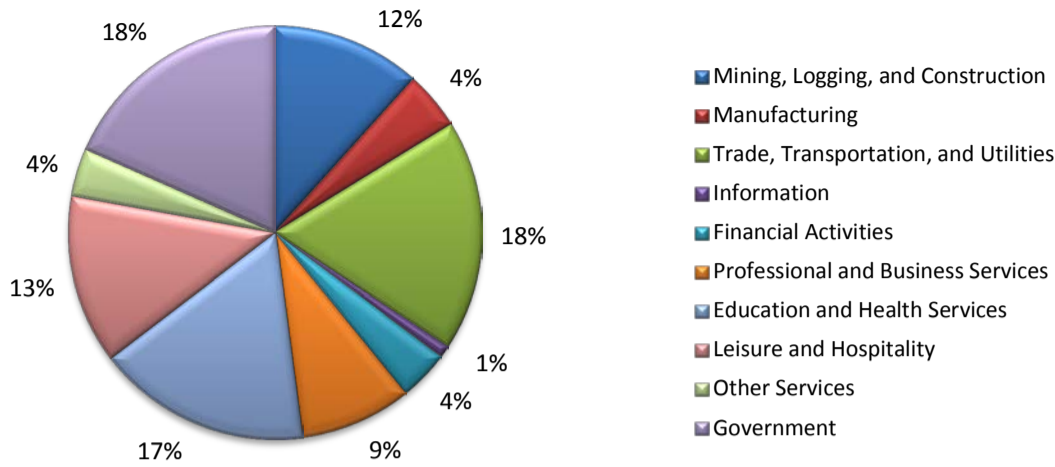
- Median earnings Corpus Christi by education for persons 25 years of age & up (Census AFF/ACS): **\$27,211** (\$36,380 male/ \$22,328 female)

Less than High School	\$15,437	Some College or Associates	\$28,739	Graduate or Professional	\$56,681
High School & GED	\$26,818	Bachelor's	\$44,078		

Equal Opportunity Employer/Program. Auxiliary aids and services are available upon request to individuals with disabilities.
Deaf, hard-of-hearing or speech impaired customers may contact **Relay Texas:** 1-800-735-2989 (TDD) and 1-800-735-2988 or 7-1-1 (Voice)

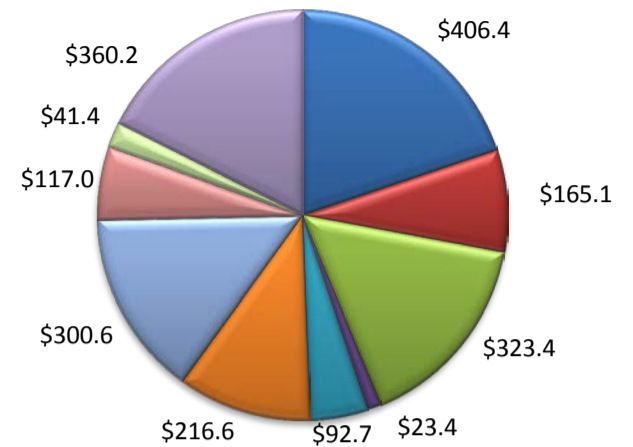
(Aransas, Nueces, San Patricio)

Industry Composition



Wages by Industry (in millions)

3rd Quarter 2016



Employment by Industry

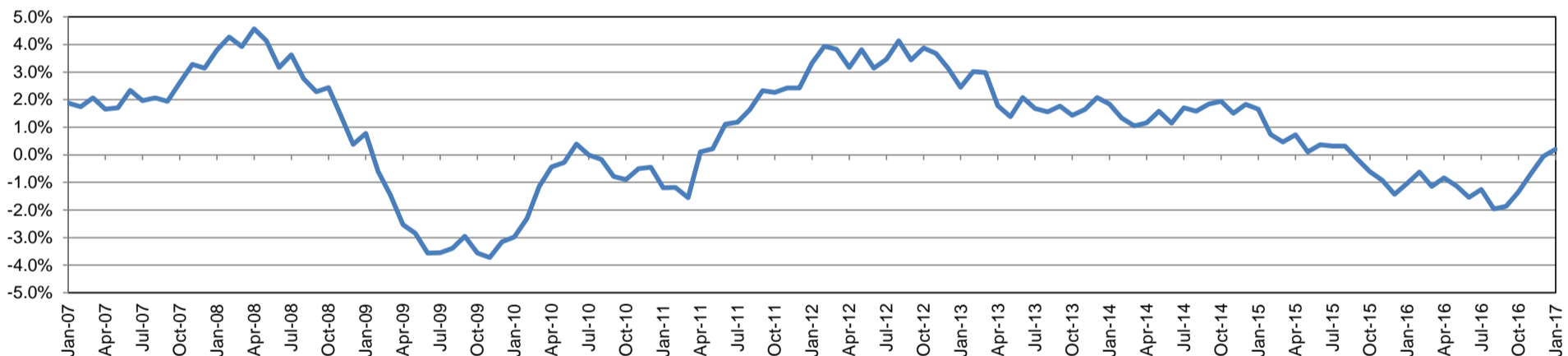
	Jan-17	Dec-16	Jan-16	Monthly Change		Annual Change	
				Actual	%	Actual	%
Total Nonfarm	189,100	192,200	188,700	-3,100	-1.6%	400	0.2%
Mining, Logging, and Construction	22,000	21,800	22,300	200	0.9%	-300	-1.4%
Manufacturing	8,600	8,800	9,100	-200	-2.3%	-500	-5.5%
Trade, Transportation, and Utilities	34,200	35,300	34,300	-1,100	-3.1%	-100	-0.3%
Information	1,800	1,800	1,900	0	0.0%	-100	-5.3%
Financial Activities	7,500	7,700	7,800	-200	-2.6%	-300	-3.9%
Professional and Business Services	16,500	16,600	17,200	-100	-0.6%	-700	-4.1%
Education and Health Services	31,600	31,900	30,500	-300	-0.9%	1,100	3.6%
Leisure and Hospitality	25,000	25,500	24,200	-500	-2.0%	800	3.3%
Other Services	7,100	7,200	7,100	-100	-1.4%	0	0.0%
Government	34,800	35,600	34,300	-800	-2.3%	500	1.5%

Industry Size Class

September 2016

Size Class	Employees per firm	Number of Firms	Employment in Size Class	% Total Employment
9	1000+	19	45,298	24.3%
8	500-999	22	14,218	7.6%
7	250-499	48	16,080	8.6%
6	100-249	198	30,446	16.3%
5	50-99	319	22,541	12.1%
4	20-49	826	25,487	13.7%
3	10-19	1,115	15,260	8.2%
2	5-9	1,481	9,817	5.3%
1	1-4	3,514	7,295	3.9%
0	0	725	0	0.0%
Total		8,267	186,442	100.0%

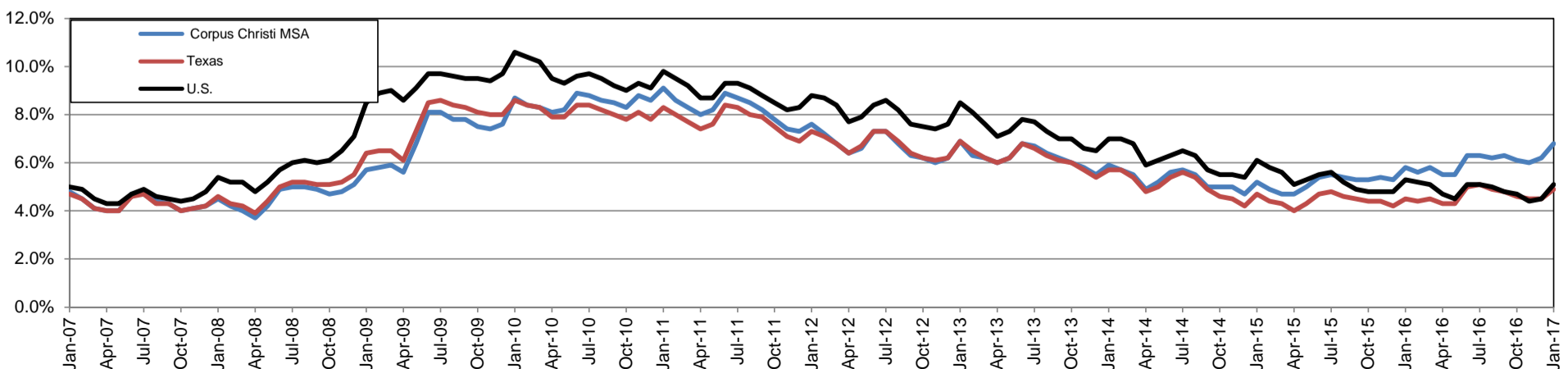
Annual Growth Rate for Total Nonagricultural Employment



Unemployment Information (all estimates in thousands)

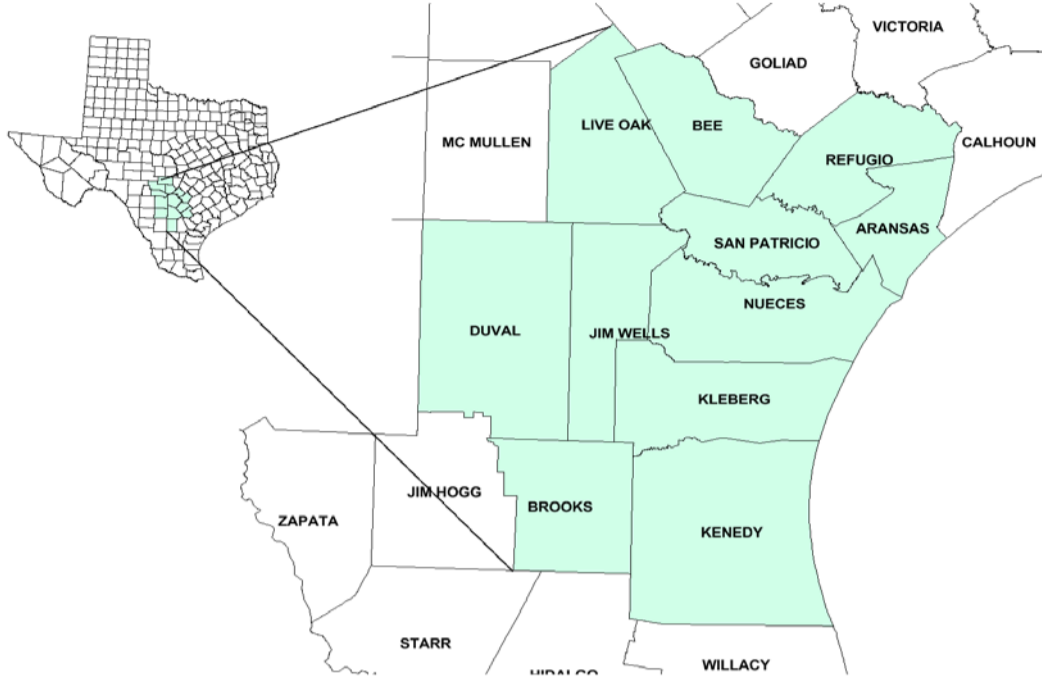
	Corpus Christi MSA				Texas (Actual)				United States (Actual)			
	C.L.F.	Emp.	Unemp.	Rate	C.L.F.	Emp.	Unemp.	Rate	C.L.F.	Emp.	Unemp.	Rate
Jan-17	205.9	191.8	14.1	6.8	13,358.0	12,697.1	660.9	4.9	158,676.0	150,527.0	8,149.0	5.1
Dec-16	206.0	193.2	12.8	6.2	13,353.3	12,747.3	606.0	4.5	158,968.0	151,798.0	7,170.0	4.5
Jan-16	203.9	192.2	11.7	5.8	13,113.0	12,521.5	591.5	4.5	157,347.0	149,037.0	8,309.0	5.3

Historical Unemployment Rates



Coastal Bend Workforce Development Area

January 2017



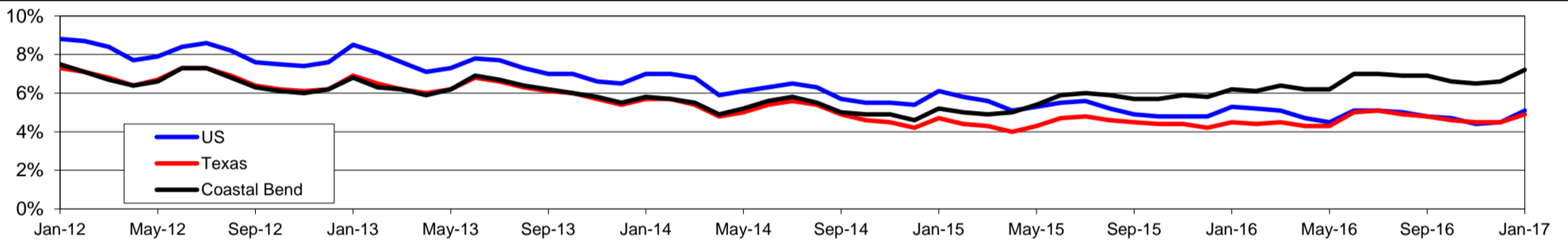
WDA Labor Force Statistics				
	Jan-17	Dec-16	Jan-16	OTY
CLF	261,041	261,754	261,796	-755
Employed	242,186	244,444	245,517	-3,331
Unemployed	18,855	17,310	16,279	2,576
Rate	7.2%	6.6%	6.2%	1.0%

Texas Labor Force Statistics				
	Jan-17	Dec-16	Jan-16	OTY
CLF	13,357,997	13,353,321	13,112,957	245,040
Employed	12,697,121	12,747,329	12,521,460	175,661
Unemployed	660,876	605,992	591,497	69,379
Rate	4.9%	4.5%	4.5%	0.4%

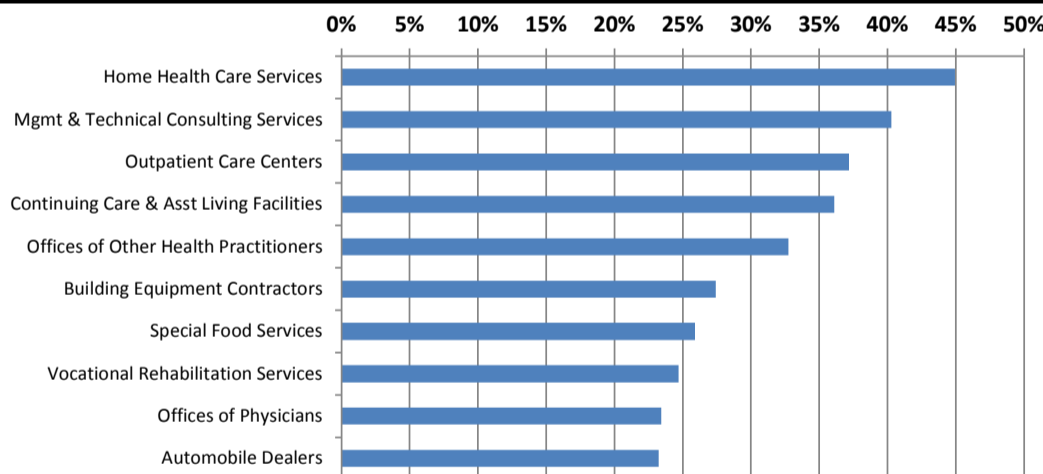
US Labor Force Statistics				
	Jan-17	Dec-16	Jan-16	OTY
CLF	158,676,000	158,968,000	157,347,000	1,329,000
Employed	150,527,000	151,798,000	149,037,000	1,490,000
Unemployed	8,149,000	7,170,000	8,309,000	-160,000
Rate	5.1%	4.5%	5.3%	-0.2%

Continued Claims for the Week of the 12th				
	Jan-17	Dec-16	Jan-16	OTY
WDA	4,316	4,334	4,862	-546
Texas	131,825	129,904	143,155	-11,330

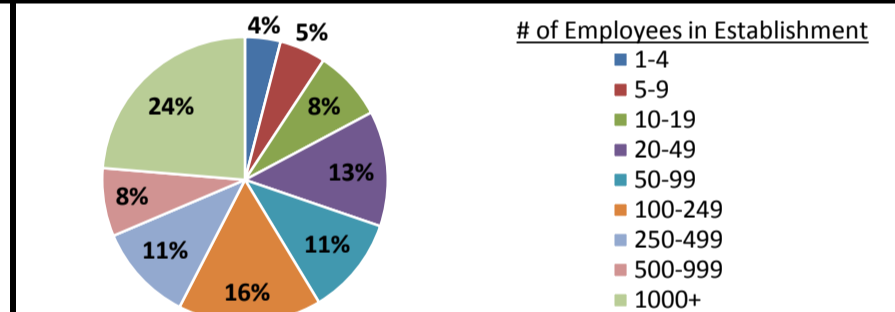
Historical Unemployment Rates



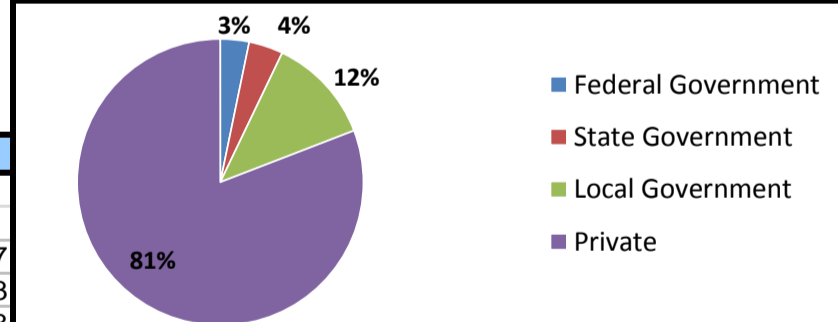
Projected Fastest Growing Industries in WDA (% growth 2014-2024)



Employment by Size Class (3rd Quarter 2016)



Employment by Ownership (3rd Quarter 2016)



Average Weekly Wage (3rd Quarter 2016)

	Q3 2016	Q2 2016	Q3 2015	Change	
				Quarter	Year
WDA	\$856	\$816	\$839	\$40	\$17
Texas	\$1,042	\$1,000	\$999	\$42	\$43
US	\$1,027	\$988	\$974	\$39	\$53

Employment by Industry (3rd Quarter 2016, Percent Change)

Industry	Employment	% of total	% Change	
			Quarter	Year
Natural resources and mining	9,451	4.0%	0.5%	-30.2%
Construction	23,153	9.9%	1.2%	11.3%
Manufacturing	12,966	5.5%	-1.6%	-9.4%
Trade, transportation and utilities	43,972	18.8%	0.2%	-4.4%
Information	2,199	0.9%	-2.3%	-8.6%
Financial activities	9,356	4.0%	-0.6%	-10.2%
Professional and business services	18,158	7.8%	-1.8%	-4.9%
Education and health services	63,951	27.3%	-2.4%	3.3%
Leisure and hospitality	32,456	13.9%	-0.3%	-1.3%
Other services	6,471	2.8%	-0.6%	-9.8%
Public administration	12,032	5.1%	0.8%	2.1%
Total	234,165	100.0%	-0.8%	-2.5%

Employment by Industry (3rd Quarter 2016)

