

Coastal Bend Workforce Area

(Not Seasonally Adjusted Unemployment Rates by WDA, MSA, & County)

Area	Area Type	Latest Monthly Data February 2017						Previous Monthly Data January 2017				Year Ago February 2016			
		Labor Force	Employment	Unemployment	Rate	M+-	Y+-	Labor Force	Employment	Unemployment	Rate	Labor Force	Employment	Unemployment	Rate
United States	Nation	160,056,000	152,528,000	7,528,000	4.7	-0.1	-0.2	159,716,000	152,081,000	7,635,000	4.8	158,888,000	151,043,000	7,845,000	4.9
Texas	State	13,459,664	12,799,058	660,606	4.9	0.1	0.3	13,400,291	12,757,792	624,499	4.8	13,186,816	12,585,518	601,298	4.6
Corpus Christi	MSA	208,440	194,289	14,151	6.8	0.0	1.2	205,673	191,601	14,072	6.8	205,493	193,948	11,545	5.6
Coastal Bend	WDA	264,133	245,184	18,949	7.2	0.0	1.1	260,763	241,904	18,859	7.2	264,176	248,018	16,158	6.1
Aransas	County	10,192	9,475	717	7.0	0.0	1.5	10,027	9,326	701	7.0	10,009	9,456	553	5.5
Bee	County	10,137	9,330	807	8.0	0.1	1.3	9,932	9,143	789	7.9	10,382	9,690	692	6.7
Brooks	County	2,336	2,079	257	11.0	-0.2	-0.1	2,305	2,046	259	11.2	2,487	2,210	277	11.1
Duval	County	4,657	4,140	517	11.1	0.3	0.3	4,652	4,148	504	10.8	4,929	4,397	532	10.8
Jim Wells	County	16,503	14,815	1,688	10.2	-0.2	0.7	16,506	14,797	1,709	10.4	17,965	16,261	1,704	9.5
Kenedy	County	195	184	11	5.6	0.3	1.7	188	178	10	5.3	230	221	9	3.9
Kleberg	County	13,932	12,940	992	7.1	-0.2	0.7	13,598	12,605	993	7.3	14,276	13,358	918	6.4
Live Oak	County	4,896	4,576	320	6.5	0.1	1.0	4,884	4,572	312	6.4	5,263	4,973	290	5.5
Nueces	County	167,580	156,818	10,762	6.4	-0.1	1.0	165,364	154,689	10,675	6.5	165,339	156,441	8,898	5.4
Refugio	County	3,037	2,831	206	6.8	-0.2	0.7	3,025	2,814	211	7.0	3,151	2,960	191	6.1
San Patricio	County	30,668	27,996	2,672	8.7	-0.2	1.8	30,282	27,586	2,696	8.9	30,145	28,051	2,094	6.9

(M+-) Change in unemployment rate from last month (Increase) (Decrease)

(Y+-) Change in unemployment rate from last year (Increase) (Decrease)

- Earnings for all occupations Coastal Bend, expressed as hourly rate (TWC):

Coastal Bend	All Occupations-	Average \$18.35/hr.	Entry level \$8.58/hr.	Experienced workers \$23.24/hr.	Top 10% \$33.56/hr.
Texas	All Occupations-	Average \$20.97/hr.	Entry level \$8.88/hr.	Experienced workers \$ 27.02/hr.	Top 10% \$39.64/hr.

- Educational Attainment for population 25 years of age and older - Corpus Christi (Census American Fact Finder/American Community Survey):

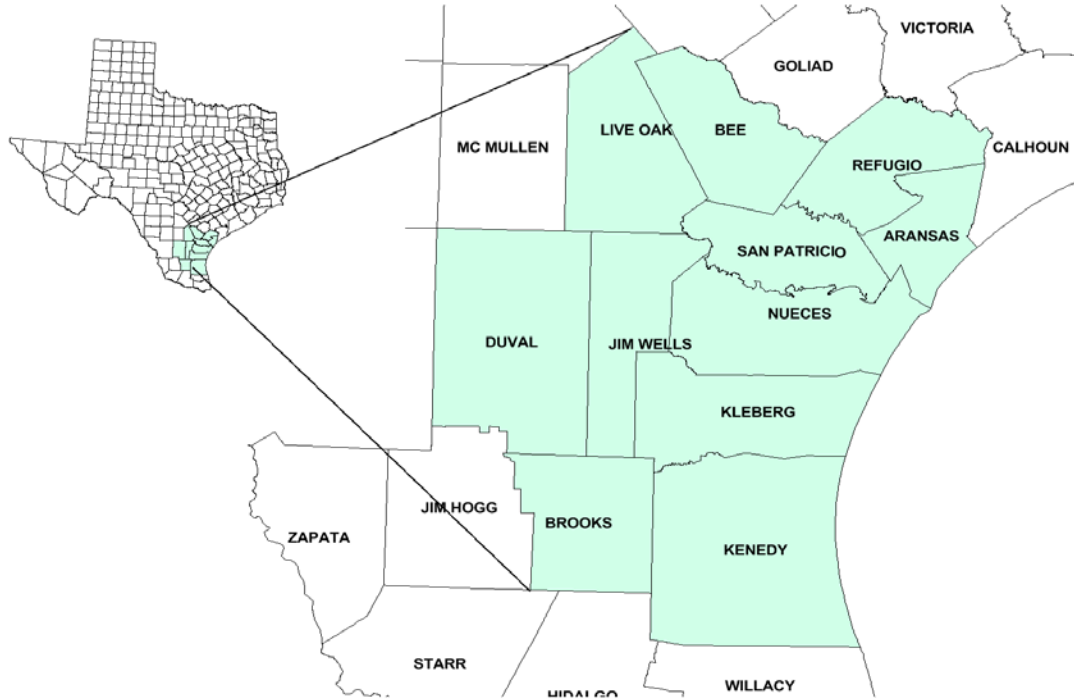
Less than 9th grade	8.7%	12th grade & GED	27.7%	Associates degree	7.0%	Graduate or Professional degrees	8.4%
9th thru 11th grade	9.3%	Some College	25.1%	Bachelors degree	13.8%		

- Median earnings Corpus Christi by education for persons 25 years of age & up (Census AFF/ACS): **\$27,211** (\$36,380 male/ \$22,328 female)

Less than High School	\$15,437	Some College or Associates	\$28,739	Graduate or Professional	\$56,681
High School & GED	\$26,818	Bachelor's	\$44,078		

Coastal Bend Workforce Development Area

February 2017



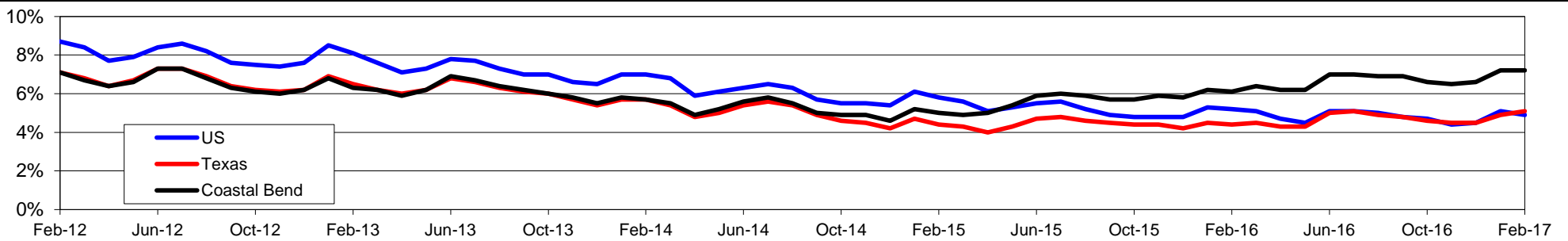
WDA Labor Force Statistics				
	Feb-17	Jan-17	Feb-16	OTY
CLF	264,133	260,763	264,176	-43
Employed	245,184	241,904	248,018	-2,834
Unemployed	18,949	18,859	16,158	2,791
Rate	7.2%	7.2%	6.1%	1.1%

Texas Labor Force Statistics				
	Feb-17	Jan-17	Feb-16	OTY
CLF	13,466,399	13,356,586	13,185,966	280,433
Employed	12,777,968	12,695,730	12,604,648	173,320
Unemployed	688,431	660,856	581,318	107,113
Rate	5.1%	4.9%	4.4%	0.7%

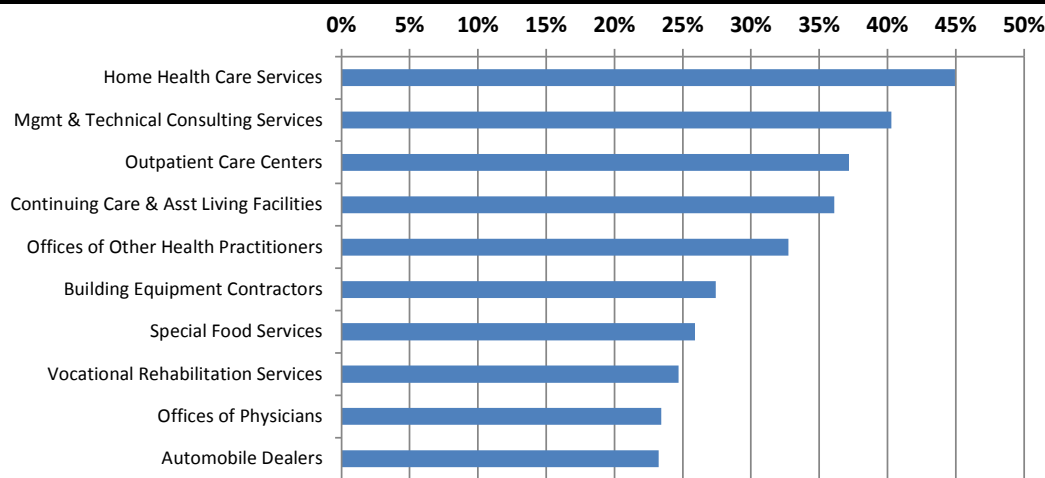
US Labor Force Statistics				
	Feb-17	Jan-17	Feb-16	OTY
CLF	159,482,000	158,676,000	158,279,000	1,203,000
Employed	151,594,000	150,527,000	150,060,000	1,534,000
Unemployed	7,887,000	8,149,000	8,219,000	-332,000
Rate	4.9%	5.1%	5.2%	-0.3%

Continued Claims for the Week of the 12th				
	Feb-17	Jan-17	Feb-16	OTY
WDA	3,714	4,326	4,985	-1,271
Texas	122,950	132,086	145,342	-22,392

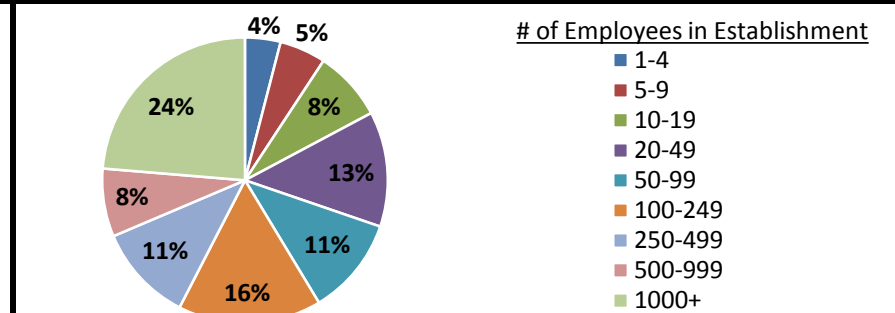
Historical Unemployment Rates



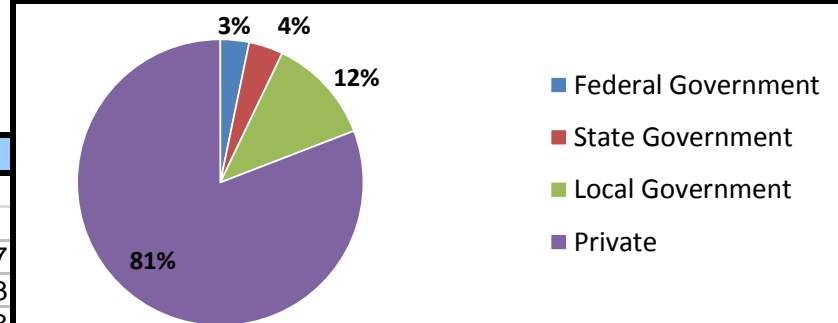
Projected Fastest Growing Industries in WDA (% growth 2014-2024)



Employment by Size Class (3rd Quarter 2016)



Employment by Ownership (3rd Quarter 2016)



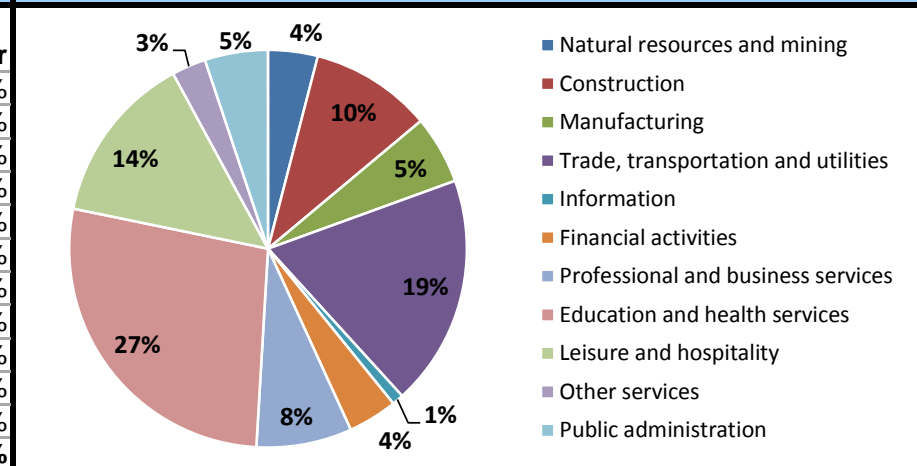
Average Weekly Wage (3rd Quarter 2016)

	Q3 2016	Q2 2016	Q3 2015	Change	
				Quarter	Year
WDA	\$856	\$816	\$839	\$40	\$17
Texas	\$1,042	\$1,000	\$999	\$42	\$43
US	\$1,027	\$988	\$974	\$39	\$53

Employment by Industry (3rd Quarter 2016, Percent Change)

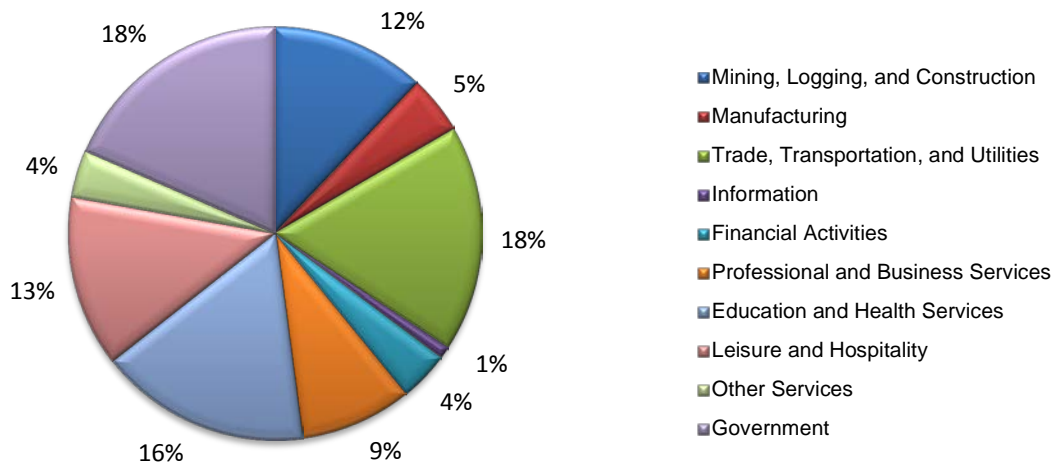
Industry	Employment	% of total	% Change	
			Quarter	Year
Natural resources and mining	9,451	4.0%	0.5%	-30.2%
Construction	23,153	9.9%	1.2%	11.3%
Manufacturing	12,966	5.5%	-1.6%	-9.4%
Trade, transportation and utilities	43,972	18.8%	0.2%	-4.4%
Information	2,199	0.9%	-2.3%	-8.6%
Financial activities	9,356	4.0%	-0.6%	-10.2%
Professional and business services	18,158	7.8%	-1.8%	-4.9%
Education and health services	63,951	27.3%	-2.4%	3.3%
Leisure and hospitality	32,456	13.9%	-0.3%	-1.3%
Other services	6,471	2.8%	-0.6%	-9.8%
Public administration	12,032	5.1%	0.8%	2.1%
Total	234,165	100.0%	-0.8%	-2.5%

Employment by Industry (3rd Quarter 2016)



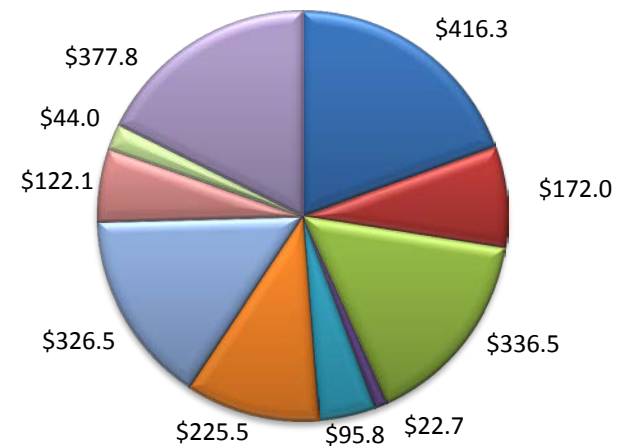
(Aransas, Nueces, San Patricio)

Industry Composition



Wages by Industry (in millions)

3rd Quarter 2016



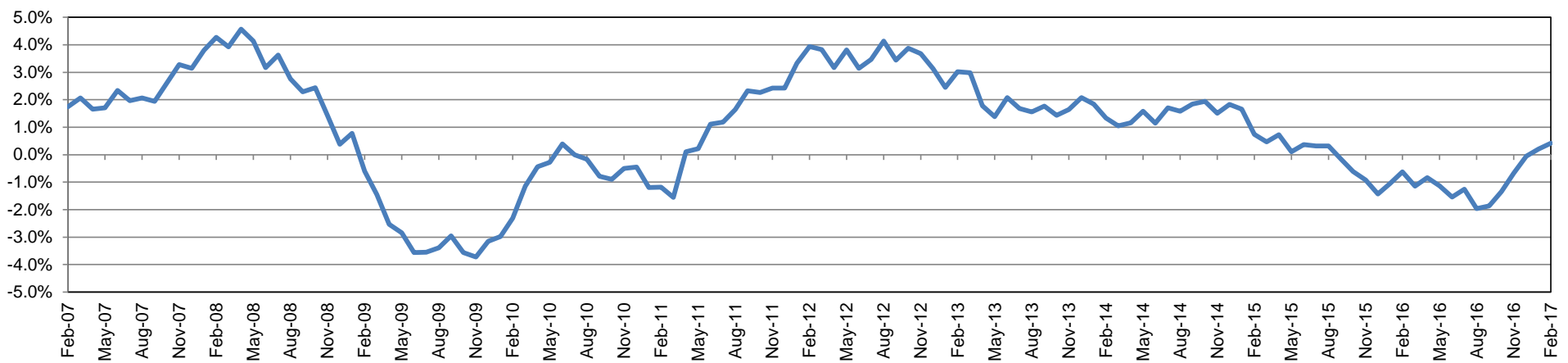
Employment by Industry

	Feb-17	Jan-17	Feb-16	Monthly Change		Annual Change	
				Actual	%	Actual	%
Total Nonfarm	191,400	189,100	190,600	2,300	1.2%	800	0.4%
Mining, Logging, and Construction	23,000	22,000	22,500	1,000	4.6%	500	2.2%
Manufacturing	8,700	8,600	9,100	100	1.2%	-400	-4.4%
Trade, Transportation, and Utilities	33,900	34,200	34,300	-300	-0.9%	-400	-1.2%
Information	1,800	1,800	1,900	0	0.0%	-100	-5.3%
Financial Activities	7,500	7,500	7,800	0	0.0%	-300	-3.9%
Professional and Business Services	16,800	16,500	17,200	300	1.8%	-400	-2.3%
Education and Health Services	31,600	31,500	30,700	100	0.3%	900	2.9%
Leisure and Hospitality	25,600	25,100	25,000	500	2.0%	600	2.4%
Other Services	7,100	7,100	7,200	0	0.0%	-100	-1.4%
Government	35,400	34,800	34,900	600	1.7%	500	1.4%

Industry Size Class September 2016

Size Class	Employees per firm	Number of Firms	Employment in Size Class	% Total Employment
9	1000+	19	45,298	24.3%
8	500-999	22	14,218	7.6%
7	250-499	48	16,080	8.6%
6	100-249	198	30,446	16.3%
5	50-99	319	22,541	12.1%
4	20-49	826	25,487	13.7%
3	10-19	1,115	15,260	8.2%
2	5-9	1,481	9,817	5.3%
1	1-4	3,514	7,295	3.9%
0	0	725	0	0.0%
Total		8,267	186,442	100.0%

Annual Growth Rate for Total Nonagricultural Employment



Unemployment Information (all estimates in thousands)

	Corpus Christi MSA				Texas (Actual)				United States (Actual)			
	C.L.F.	Emp.	Unemp.	Rate	C.L.F.	Emp.	Unemp.	Rate	C.L.F.	Emp.	Unemp.	Rate
Feb-17	208.4	194.3	14.2	6.8	13,466.4	12,778.0	688.4	5.1	159,482.0	151,594.0	7,887.0	4.9
Jan-17	205.7	191.6	14.1	6.8	13,356.6	12,695.7	660.9	4.9	158,676.0	150,527.0	8,149.0	5.1
Feb-16	205.5	193.9	11.5	5.6	13,186.0	12,604.6	581.3	4.4	158,279.0	150,060.0	8,219.0	5.2

Historical Unemployment Rates

