



# Coastal Bend Workforce Area

Area	Area Type	Latest Monthly Data September 2010				Previous Monthly Data August 2010				Year Ago September 2009			
		Labor Force	Employment	Unemployment	Rate	Labor Force	Employment	Unemployment	Rate	Labor Force	Employment	Unemployment	Rate
U.S.	Nation	153,854,000	139,715,000	14,140,000	9.2	154,678,000	139,919,000	14,759,000	9.5	153,617,000	139,079,000	14,538,000	9.5
Texas	State	12,165,687	11,209,084	956,603	7.9	12,190,333	11,168,971	1,021,362	8.4	12,004,418	11,031,467	972,951	8.1
Corpus Christi	MSA	212,066	195,318	16,748	7.9	212,399	194,799	17,600	8.3	208,247	192,225	16,022	7.7
Coastal Bend	WDA	282,841	260,478	22,363	7.9	283,397	259,751	23,646	8.3	279,005	256,519	22,486	8.1
Aransas	County	11,898	10,945	953	8.0	11,906	10,916	990	8.3	11,602	10,772	830	7.2
Bee	County	12,104	10,977	1,127	9.3	12,122	10,924	1,198	9.9	12,014	10,811	1,203	10.0
Brooks	County	3,412	3,089	323	9.5	3,409	3,055	354	10.4	3,363	3,019	344	10.2
Duval	County	5,245	4,675	570	10.9	5,225	4,618	607	11.6	5,410	4,724	686	12.7
Jim Wells	County	22,448	20,694	1,754	7.8	22,539	20,615	1,924	8.5	22,583	20,348	2,235	9.9
Kenedy	County	250	239	11	4.4	251	240	11	4.4	250	235	15	6.0
Kleberg	County	17,629	16,442	1,187	6.7	17,766	16,504	1,262	7.1	17,424	16,156	1,268	7.3
Live Oak	County	5,022	4,686	336	6.7	5,075	4,708	367	7.2	5,162	4,770	392	7.6
McMullen	County	358	335	23	6.4	348	323	25	7.2	359	333	26	7.2
Nueces	County	168,702	155,935	12,767	7.6	168,923	155,521	13,402	7.9	165,747	153,466	12,281	7.4
Refugio	County	4,306	4,023	283	6.6	4,263	3,965	298	7.0	4,193	3,898	295	7.0
San Patricio	County	31,467	28,438	3,029	9.6	31,570	28,362	3,208	10.2	30,898	27,987	2,911	9.4

Earnings for all occupations Coastal Bend, expressed as hourly rate (TWC):

**Coastal Bend - All Occupations - Average \$16.20/hr.; Entry level \$7.51/hr.; Experienced workers \$20.54/hr.; top 10% \$29.66/hr.**

**Texas - All Occupations - Average \$18.90/hr.; Entry level \$8.16/hr.; Experienced workers \$ 24.27/hr.; top 10% \$35.43/hr.**

Educational Attainment for population 25 years of age and older - Corpus Christi (Census American Fact Finder / American Community Survey):

**Less than 9<sup>th</sup> grade 9.9%; 9<sup>th</sup> thru 11<sup>th</sup> grade 12.0%; 12<sup>th</sup> grade and GED 27.4%; some college 23.3%; Associates degree 7.1%;**

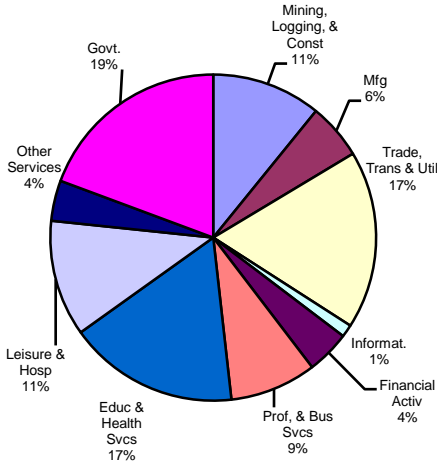
**Bachelors degree 13.2%; Graduate or Professional degrees 7.1%**

Median earnings Corpus Christi by education for persons 25 years of age & up (Census AFF / ACS): \$27,211 (\$33,893 male/ \$21,233 female)

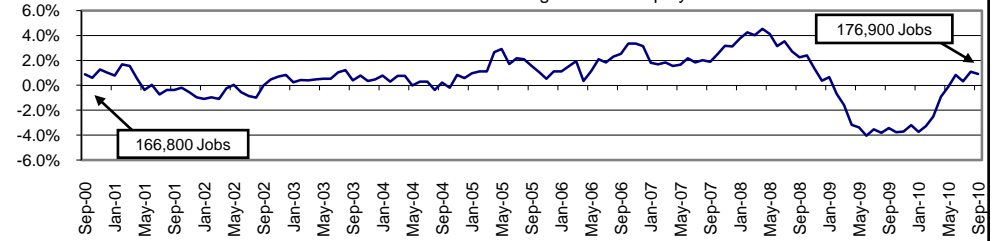
**Less than High School \$15,396      Some College or Associates \$30,595      Graduate & Professional \$53,951**

**High School & GED \$21,460      Bachelor's \$41,044**

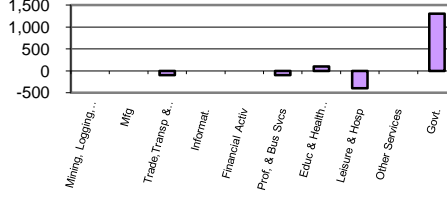
**Industry Composition**



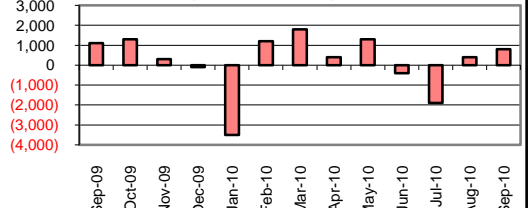
**Annual Growth Rate for Total NonAgricultural Employment**



**Monthly Change by Industry**



**Monthly Change in Total Nonag Employment**



**Employment by Industry**

				Monthly Change		Annual Change	
	Sep-2010	Aug-2010	Sep-2009	Actual	%	Actual	%
Total Nonagricultural	176,900	176,100	175,300	800	0.5%	1,600	0.9%
Mining, Logging, & Const	19,200	19,200	19,100	0	0.0%	100	0.5%
Manufacturing	9,800	9,800	9,600	0	0.0%	200	2.1%
Trade, Transp., & Utilities	31,300	31,400	31,200	-100	-0.3%	100	0.3%
Information	2,200	2,200	2,200	0	0.0%	0	0.0%
Financial Activities	7,600	7,600	7,600	0	0.0%	0	0.0%
Profes., & Business Svcs	15,200	15,300	15,000	-100	-0.7%	200	1.3%
Education & Health Svcs	29,900	29,800	29,100	100	0.3%	800	2.8%
Leisure & Hospitality	20,400	20,800	21,000	-400	-1.9%	-600	-2.9%
Other Services	7,100	7,100	7,000	0	0.0%	100	1.4%
Government	34,200	32,900	33,500	1,300	4.0%	700	2.1%

**Size Class of Industries**

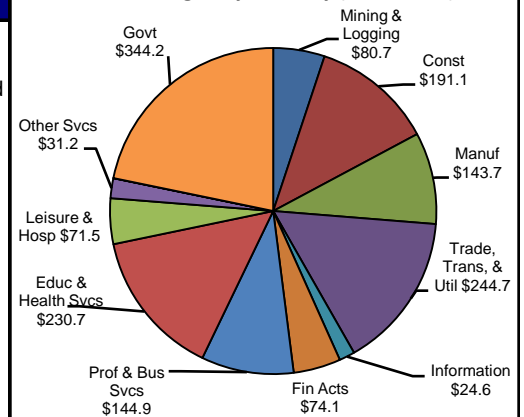
as of March 2010

Size Class	Employees Per Firm	Number of Firms	Employment in Size Class	% of Total Employment
9	1000+	19	45196	25.7%
8	500-999	20	14148	8.0%
7	250-499	47	15811	9.0%
6	100-249	175	26572	15.1%
5	50-99	282	20060	11.4%
4	20-49	739	22568	12.8%
3	10-19	1019	13812	7.9%
2	5-9	1529	10095	5.7%
1	1-4	3617	7541	4.3%
0	0	589	0	0.0%
<b>TOTAL</b>		<b>8036</b>	<b>175803</b>	<b>100.0%</b>

**Comments for September 2010**

Total Nonagricultural Employment in the Corpus Christi MSA added 800 jobs over the month. This increase is considered seasonal and was 200 jobs short of the five-year average increase of 1,000 jobs. September also marked the second consecutive month of employment increases and the sixth over-the-month increase for 2010. Employment increased 0.9 percent for the previous twelve months. Local Government experienced the largest over-the-month increase. This sector increased by 800 jobs over the month due to area school districts increasing staff for the new school year. For the year, Local Government grew by 1.4 percent. The largest over-the-month decrease happened in Leisure and Hospitality. This seasonal decrease for September was the smallest decrease in seven years, and was only the third over-the-month decrease for the year.

**1st Quarter Wages by Industry (in millions)**



**Unemployment Information** (all estimates are in thousands)

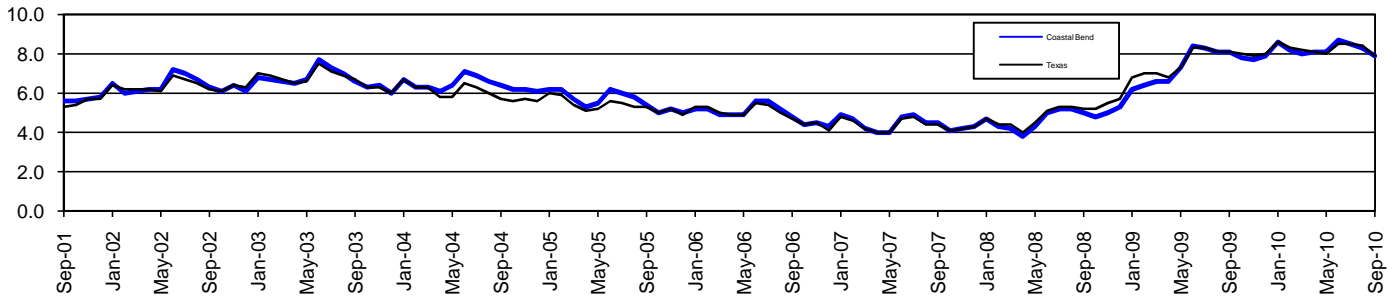
	Corpus Christi MSA				Texas (Actual)				United States (Actual)			
	C.L.F.	Emp.	Unemp.	% Rate	C.L.F.	Emp.	Unemp.	% Rate	C.L.F.	Emp.	Unemp.	% Rate
Sep-2010	212.0	195.3	16.7	7.9	12,165.7	11,209.1	956.6	7.9	153,854.0	139,715.0	14,140.0	9.2
Aug-2010	212.4	194.8	17.6	8.3	12,190.4	11,169.0	1,021.4	8.4	154,678.0	139,919.0	14,759.0	9.5
Sep-2009	208.2	192.2	16.0	7.7	12,004.5	11,031.5	973.0	8.1	153,617.0	139,079.0	14,538.0	9.5

# Coastal Bend Workforce Development Area\*

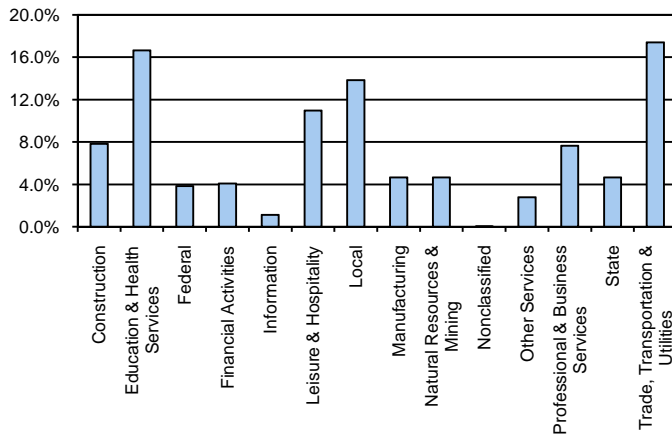
## September 2010

Coastal Bend WDA					Texas				
	CLF	Employed	Unemployed	Rate		CLF	Employed	Unemployed	Rate
<b>Sep-10</b>	282,841	260,478	22,363	7.9	<b>Sep-10</b>	12,165,687	11,209,084	956,603	7.9
<b>Aug-10</b>	283,397	259,751	23,646	8.3	<b>Aug-10</b>	12,190,333	11,168,971	1,021,362	8.4
<b>Sep-09</b>	279,005	256,519	22,486	8.1	<b>Sep-09</b>	12,004,418	11,031,467	972,951	8.1

### Historical Unemployment Rates



### Coastal Bend WDA Industry Composition 1st Quarter 2010



### Total WDA Claims

	Sep-10	Aug-10	Sep-09	OTY
<b>Initial</b>	2,155	2,265	2,256	<b>-101</b>
<b>Continued</b>	8,642	10,382	13,662	<b>-5,020</b>
<b>Continued Claims for the Week of the 12th</b>				
<b>Continued</b>	6,230	7,432	9,408	<b>-3,178</b>

### Texas Unemployment Insurance Claims Filed

	Sep-10	Aug-10	Sep-09	OTY
<b>Initial</b>	83,025	91,613	98,946	<b>-15,921</b>
<b>Continued</b>	859,823	1,064,768	1,188,040	<b>-328,217</b>
<b>Continued Claims for the Week of the 12th</b>				
<b>Continued</b>	198,589	218,763	276,553	<b>-77,964</b>

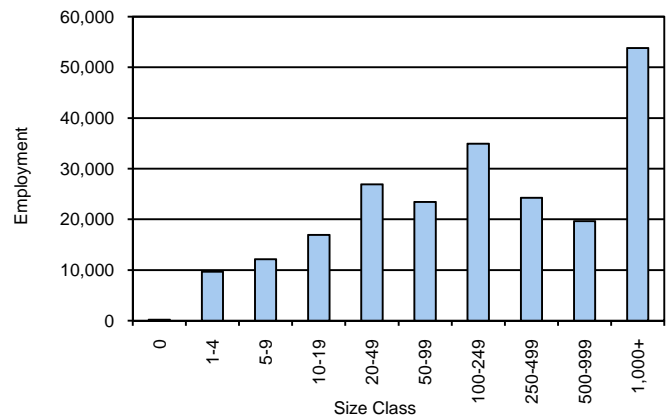
### Coastal Bend WDA Average Weekly Wage

	Coastal Bend	WDA Qtr. Chg.	Texas
<b>1st Quarter 2010</b>	\$685.78	-\$76.24	\$893.19
<b>4th Quarter 2009</b>	\$762.02	<b>WDA OTY Chg.</b>	\$944.14
<b>1st Quarter 2009</b>	\$703.39	-\$17.61	\$886.34

### NAICS Covered Employment Quarterly Data 1st Quarter 2010

SUPER SECTOR	Employment	Change	
		Quarter	Year
Construction	17,334	537	-1,909
Education & Health Services	36,910	-69	1,124
Federal	8,498	-10	32
Financial Activities	9,027	-167	-539
Information	2,461	-69	-154
Leisure & Hospitality	24,305	68	-268
Local	30,702	-73	251
Manufacturing	10,307	-128	-1,391
Natural Resources & Mining	10,305	132	-1,710
Nonclassified	44	14	20
Other Services	6,164	-46	-274
Professional & Business Services	16,929	-24	-675
State	10,332	-63	539
Trade, Transportation & Utilities	38,586	-365	-1,364
<b>TOTAL</b>	<b>221,904</b>	<b>-263</b>	<b>-6,318</b>

### Size Class Employment Composition 1st Quarter 2010



\*Counties in WDA: Aransas, Bee, Brooks, Duval, Jim Wells, Kenedy, Kleberg, Live Oak, McMullen, Nueces, Refugio, & San Patricio