



Coastal Bend Workforce Area

Area	Area Type	Most Recent Month September 2009				Last Month August 2009				Year Ago September 2008			
		Labor Force	Employment	Unemployment	Rate	Labor Force	Employment	Unemployment	Rate	Labor Force	Employment	Unemployment	Rate
Texas	State	12,069,432	11,073,437	995,995	8.3	12,061,986	11,079,518	982,468	8.1	11,773,054	11,167,709	605,345	5.1
Corpus Christi	MSA	206,515	190,080	16,435	8.0	206,748	190,672	16,076	7.8	206,325	196,086	10,239	5.0
Coastal Bend	WDA	278,311	255,177	23,134	8.3	279,313	256,512	22,801	8.2	274,799	261,226	13,573	4.9
U.S.	Nation	153,617,000	139,079,000	14,538,000	9.5	154,897,000	140,074,000	14,823,000	9.6	154,509,000	145,310,000	9,199,000	6.0
Aransas	County	11,438	10,602	836	7.3	11,437	10,635	802	7.0	11,475	10,937	538	4.7
Bee	County	11,937	10,713	1,224	10.3	11,949	10,759	1,190	10.0	11,475	10,716	759	6.6
Brooks	County	3,606	3,249	357	9.9	3,666	3,281	385	10.5	3,385	3,211	174	5.1
Duval	County	5,815	5,089	726	12.5	5,788	5,092	696	12.0	5,422	5,133	289	5.3
Jim Wells	County	23,474	21,115	2,359	10.0	23,667	21,245	2,422	10.2	21,888	20,914	974	4.4
Kenedy	County	246	231	15	6.1	256	238	18	7.0	239	233	6	2.5
Kleberg	County	16,717	15,431	1,286	7.7	17,192	15,897	1,295	7.5	16,316	15,613	703	4.3
Live Oak	County	5,291	4,890	401	7.6	5,317	4,921	396	7.4	5,161	4,925	236	4.6
McMullen	County	357	329	28	7.8	360	335	25	6.9	379	359	20	5.3
Nueces	County	164,281	151,686	12,595	7.7	164,474	152,158	12,316	7.5	164,500	156,479	8,021	4.9
Refugio	County	4,353	4,050	303	7.0	4,371	4,072	299	6.8	4,209	4,036	173	4.1
San Patricio	County	30,796	27,792	3,004	9.8	30,836	27,879	2,957	9.6	30,350	28,670	1,680	5.5

Earnings for all occupations Coastal Bend, expressed as hourly rate (TWC):

Coastal Bend - All Occupations - Average \$16.20/hr.; Entry level \$7.51/hr.; Experienced workers \$20.54/hr.; top 10% \$29.66/hr.

Texas - All Occupations – Average \$18.90/hr.; Entry level \$8.16/hr.; Experienced workers \$ 24.27/hr.; top 10% \$35.43/hr.

Educational Attainment for population 25 years of age and older - Corpus Christi (Census American Fact Finder / American Community Survey):

Less than 9th grade 9.9%; 9th thru 11th grade 12.0%; 12th grade and GED 27.4%; some college 23.3%; Associates degree 7.1%;

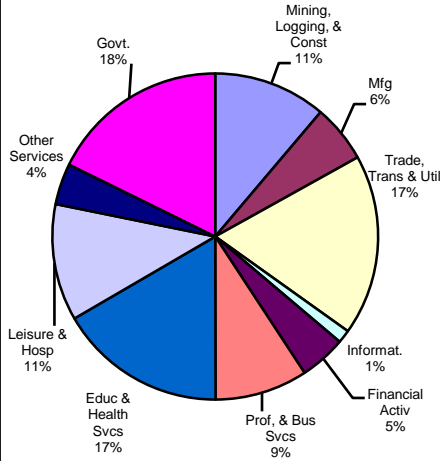
Bachelors degree 13.2%; Graduate or Professional degrees 7.1%

Median earnings Corpus Christi by education for persons 25 years of age & up (Census AFF / ACS): \$27,211 (\$33,893 male/ \$21,233 female)

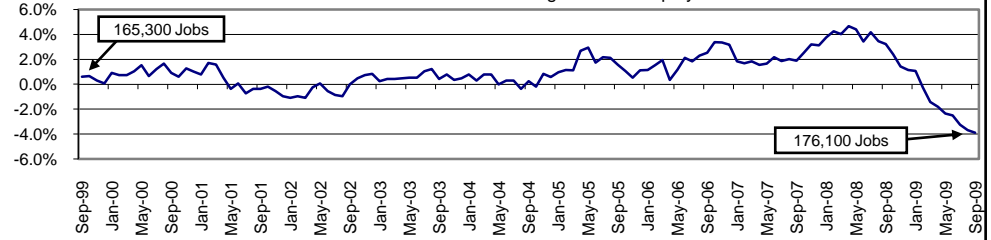
Less than High School \$15,396 Some College or Associates \$30,595 Graduate & Professional \$53,951

High School & GED \$21,460 Bachelor's \$41,044

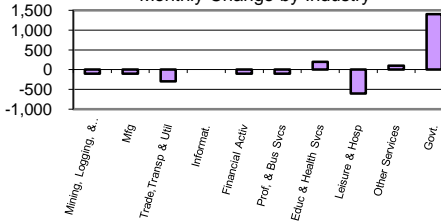
Industry Composition



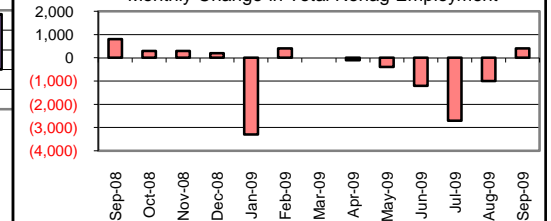
Annual Growth Rate for Total NonAgricultural Employment



Monthly Change by Industry



Monthly Change in Total Nonag Employment



Employment by Industry

	Employment			Monthly Change		Annual Change	
	Sep-2009	Aug-2009	Sep-2008	Actual	%	Actual	%
Total Nonagricultural	176,100	175,700	183,200	400	0.2%	-7,100	-3.9%
Mining, Logging, & Const	19,700	19,800	22,100	-100	-0.5%	-2,400	-10.9%
Manufacturing	10,100	10,200	11,000	-100	-1.0%	-900	-8.2%
Trade, Transp., & Utilities	31,600	31,900	32,700	-300	-0.9%	-1,100	-3.4%
Information	2,300	2,300	2,400	0	0.0%	-100	-4.2%
Financial Activities	8,100	8,200	8,200	-100	-1.2%	-100	-1.2%
Profes., & Business Svcs	16,200	16,300	16,900	-100	-0.6%	-700	-4.1%
Education & Health Svcs	29,300	29,100	28,500	200	0.7%	800	2.8%
Leisure & Hospitality	20,400	21,000	21,100	-600	-2.9%	-700	-3.3%
Other Services	7,200	7,100	7,200	100	1.4%	0	0.0%
Government	31,200	29,800	33,100	1,400	4.7%	-1,900	-5.7%

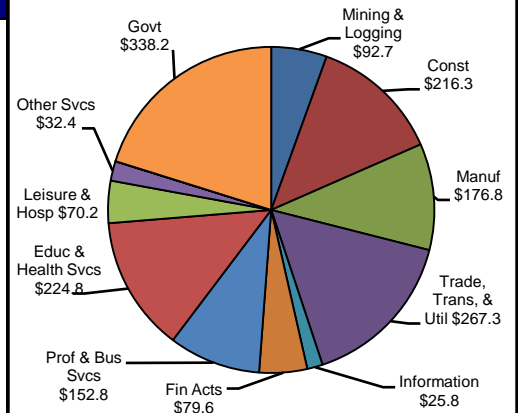
Size Class of Industries as of March 2009

Size Class	Employees Per Firm	Number of Firms	Employment in Size Class	% of Total Employment
9	1000+	20	45853	25.8%
8	500-999	21	14078	7.9%
7	250-499	43	14713	8.3%
6	100-249	188	28546	16.1%
5	50-99	283	19762	11.1%
4	20-49	745	22698	12.8%
3	10-19	1027	13977	7.9%
2	5-9	1535	10200	5.7%
1	1-4	3703	7846	4.4%
0	0	602	0	0.0%
TOTAL		8167	177673	100.0%

Comments for September 2009

The Corpus Christi MSA added 400 jobs over the month in Total Nonagricultural Employment. This over-the-month increase was the first increase since February when the same amount of jobs were added. Over the past twelve months, employment fell -3.9 percent. The Leisure and Hospitality industry experienced a seasonal decrease and lost 600 jobs over the month. This loss matched the five-year average decrease and was the third over-the-month consecutive decrease for the industry. State Government employment had a seasonal increase of 600 jobs for September. Area colleges and universities were the main reason for the increase. This year's September increase was larger than last year's increase of 500 jobs, but matched the 2007 increase.

1st Quarter Wages by Industry (in millions)



Unemployment Information (all estimates are in thousands)

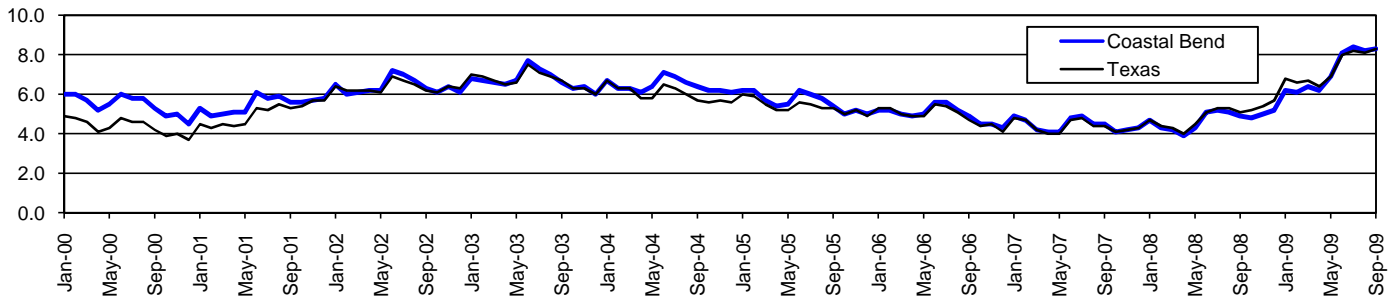
	Corpus Christi MSA				Texas (Actual)				United States (Actual)			
	C.L.F.	Emp.	Unemp.	% Rate	C.L.F.	Emp.	Unemp.	% Rate	C.L.F.	Emp.	Unemp.	% Rate
Sep-2009	206.5	190.1	16.4	8.0	12,069.4	11,073.4	996.0	8.3	153,617.0	139,079.0	14,538.0	9.5
Aug-2009	206.8	190.7	16.1	7.8	12,062.0	11,079.5	982.5	8.1	154,897.0	140,074.0	14,823.0	9.6
Sep-2008	206.3	196.1	10.2	5.0	11,773.1	11,167.7	605.3	5.1	154,509.0	145,310.0	9,199.0	6.0

Coastal Bend Workforce Development Area*

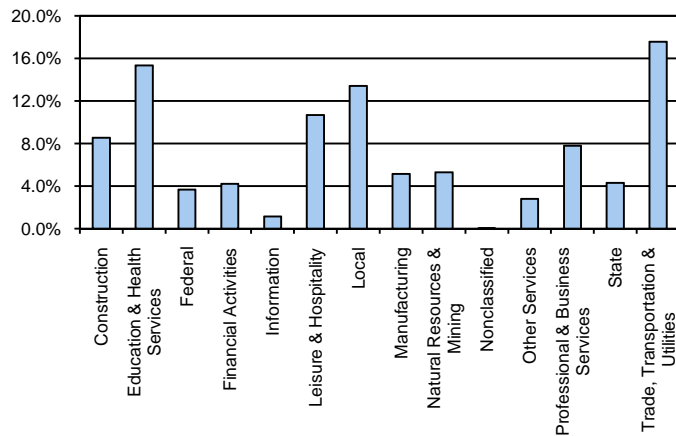
September 2009

Coastal Bend WDA					Texas				
	CLF	Employed	Unemployed	Rate		CLF	Employed	Unemployed	Rate
Sep-09	278,311	255,177	23,134	8.3	Sep-09	12,069,432	11,073,437	995,995	8.3
Aug-09	279,313	256,512	22,801	8.2	Aug-09	12,061,986	11,079,518	982,468	8.1
Sep-08	274,799	261,226	13,573	4.9	Sep-08	11,773,054	11,167,709	605,345	5.1

Historical Unemployment Rates



Coastal Bend WDA Industry Composition 1st Quarter 2009



Total WDA Claims

	Sep-09	Aug-09	Sep-08	OTY
Initial	2,256	2,215	1,327	929
Continued	13,662	15,643	6,506	7,156
Continued Claims for the Week of the 12th				
Continued	5,011	5,591	1,971	3,040

Texas Unemployment Insurance Claims Filed

	Sep-09	Aug-09	Sep-08	OTY
Initial	98,725	98,444	128,456	-29,731
Continued	1,188,040	1,404,113	559,998	628,042
Continued Claims for the Week of the 12th				
Continued	276,553	295,488	116,371	160,182

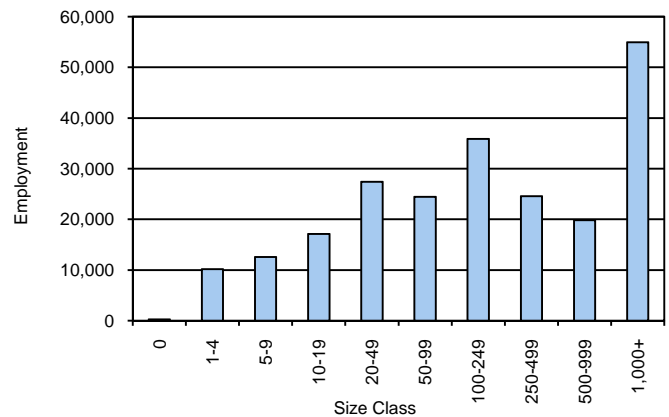
Coastal Bend WDA Average Weekly Wage

	Coastal Bend	WDA Qtr. Chg.	Texas
1st Quarter 2009	\$706.39	-\$75.06	\$884.74
4th Quarter 2008	\$781.45	WDA OTY Chg.	\$932.81
1st Quarter 2008	\$724.53	-\$18.14	\$903.44

NAICS Covered Employment Quarterly Data 1st Quarter 2009

SUPER SECTOR	Employment	Change	
		Quarter	Year
Construction	19,364	-783	-28
Education & Health Services	34,854	74	1,213
Federal	8,341	-69	292
Financial Activities	9,583	-270	-453
Information	2,622	-34	-137
Leisure & Hospitality	24,241	-219	-1
Local	30,453	434	401
Manufacturing	11,692	-309	-711
Natural Resources & Mining	12,048	-2,196	-666
Nonclassified	70	23	-9
Other Services	6,384	-293	-170
Professional & Business Services	17,707	-802	-1,004
State	9,793	-30	717
Trade, Transportation & Utilities	39,913	-1,317	-952
TOTAL	227,065	-5,791	-1,508

Size Class Employment Composition 1st Quarter 2009



*Counties in WDA: Aransas, Bee, Brooks, Duval, Jim Wells, Kenedy, Kleberg, Live Oak, McMullen, Nueces, Refugio, & San Patricio