



# Coastal Bend Workforce Area

Area	Area Type	Latest Monthly Data March 2010				Previous Monthly Data February 2010				Year Ago March 2009			
		Labor Force	Employment	Unemployment	Rate	Labor Force	Employment	Unemployment	Rate	Labor Force	Employment	Unemployment	Rate
U.S.	Nation	153,660,000	137,983,000	15,678,000	10.2	153,194,000	137,203,000	15,991,000	10.4	153,728,000	139,833,000	13,865,000	9.0
Texas	State	12,123,132	11,127,887	995,245	8.2	12,092,207	11,085,459	1,006,748	8.3	11,776,835	10,948,054	828,781	7.0
Corpus Christi	MSA	211,615	194,871	16,744	7.9	210,262	193,324	16,938	8.1	207,281	194,020	13,261	6.4
Coastal Bend	WDA	282,350	259,664	22,686	8.0	280,913	257,880	23,033	8.2	275,959	257,636	18,323	6.6
Aransas	County	11,918	10,920	998	8.4	11,854	10,834	1,020	8.6	11,591	10,873	718	6.2
Bee	County	12,142	11,020	1,122	9.2	12,112	10,959	1,153	9.5	11,720	10,729	991	8.5
Brooks	County	3,412	3,101	311	9.1	3,426	3,098	328	9.6	3,339	3,072	267	8.0
Duval	County	5,256	4,611	645	12.3	5,257	4,616	641	12.2	5,222	4,736	486	9.3
Jim Wells	County	22,420	20,490	1,930	8.6	22,392	20,377	2,015	9.0	21,679	20,035	1,644	7.6
Kenedy	County	265	237	28	10.6	263	237	26	9.9	240	230	10	4.2
Kleberg	County	17,509	16,320	1,189	6.8	17,513	16,310	1,203	6.9	16,895	15,851	1,044	6.2
Live Oak	County	5,137	4,743	394	7.7	5,113	4,722	391	7.6	5,123	4,762	361	7.0
McMullen	County	350	328	22	6.3	346	324	22	6.4	358	331	27	7.5
Nueces	County	167,984	155,578	12,406	7.4	166,851	154,343	12,508	7.5	165,156	154,899	10,257	6.2
Refugio	County	4,244	3,943	301	7.1	4,229	3,913	316	7.5	4,101	3,869	232	5.7
San Patricio	County	31,713	28,373	3,340	10.5	31,557	28,147	3,410	10.8	30,535	28,249	2,286	7.5

Earnings for all occupations Coastal Bend, expressed as hourly rate (TWC):

**Coastal Bend - All Occupations - Average \$16.20/hr.; Entry level \$7.51/hr.; Experienced workers \$20.54/hr.; top 10% \$29.66/hr.**

**Texas - All Occupations - Average \$18.90/hr.; Entry level \$8.16/hr.; Experienced workers \$ 24.27/hr.; top 10% \$35.43/hr.**

Educational Attainment for population 25 years of age and older - Corpus Christi (Census American Fact Finder / American Community Survey):

**Less than 9<sup>th</sup> grade 9.9%; 9<sup>th</sup> thru 11<sup>th</sup> grade 12.0%; 12<sup>th</sup> grade and GED 27.4%; some college 23.3%; Associates degree 7.1%;**

**Bachelors degree 13.2%; Graduate or Professional degrees 7.1%**

Median earnings Corpus Christi by education for persons 25 years of age & up (Census AFF / ACS): \$27,211 (\$33,893 male/ \$21,233 female)

**Less than High School \$15,396 Some College or Associates \$30,595 Graduate & Professional \$53,951**

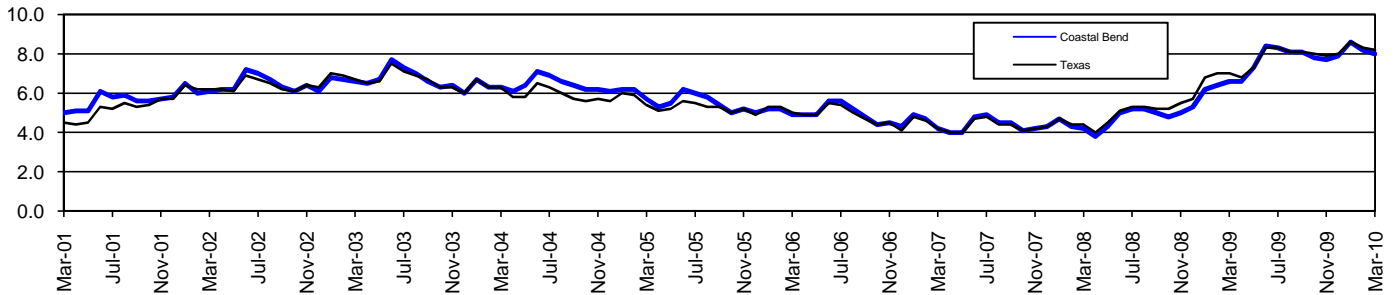
**High School & GED \$21,460 Bachelor's \$41,044**

# Coastal Bend Workforce Development Area\*

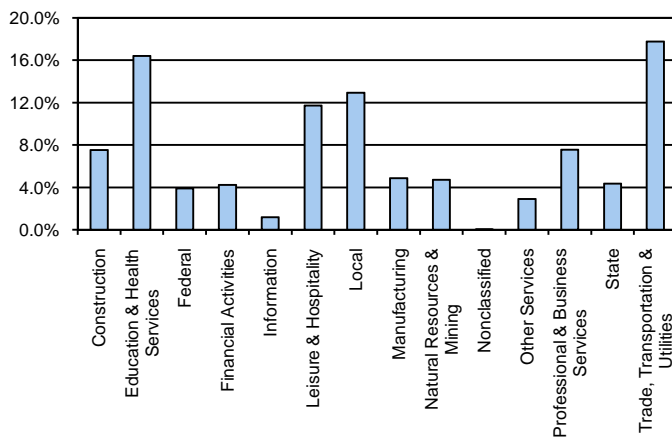
March 2010

Coastal Bend WDA					Texas				
	CLF	Employed	Unemployed	Rate		CLF	Employed	Unemployed	Rate
<b>Mar-10</b>	282,350	259,664	22,686	8.0	<b>Mar-10</b>	12,123,132	11,127,887	995,245	8.2
<b>Feb-10</b>	280,913	257,880	23,033	8.2	<b>Feb-10</b>	12,092,207	11,085,459	1,006,748	8.3
<b>Mar-09</b>	275,959	257,636	18,323	6.6	<b>Mar-09</b>	11,776,835	10,948,054	828,781	7.0

### Historical Unemployment Rates



### Coastal Bend WDA Industry Composition 3rd Quarter 2009



### Total WDA Claims

	Mar-10	Feb-10	Mar-09	OTY
<b>Initial</b>	2,505	1,950	3,216	-711
<b>Continued</b>	11,345	10,363	13,268	-1,923
<b>Continued Claims for the Week of the 12th</b>				
<b>Continued</b>	6,710	7,169	8,047	-1,337

### Texas Unemployment Insurance Claims Filed

	Mar-10	Feb-10	Mar-09	OTY
<b>Initial</b>	98,362	86,282	132,553	-34,191
<b>Continued</b>	1,088,926	1,020,691	1,242,793	-153,867
<b>Continued Claims for the Week of the 12th</b>				
<b>Continued</b>	233,413	243,367	255,582	-22,169

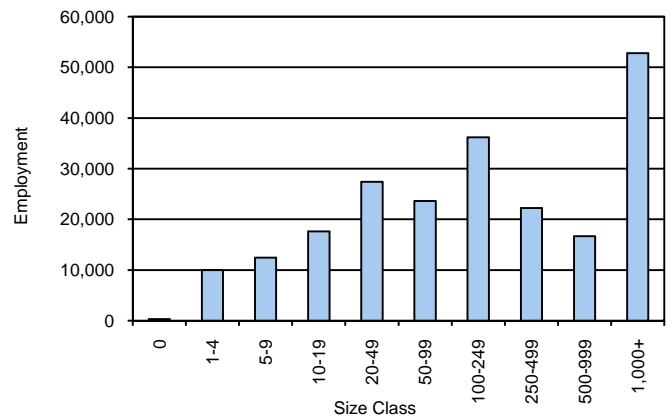
### Coastal Bend WDA Average Weekly Wage

	Coastal Bend	WDA Qtr. Chg.	Texas
<b>3rd Quarter 2009</b>	\$698.74	\$11.70	\$844.59
<b>2nd Quarter 2009</b>	\$687.04	<b>WDA OTY Chg.</b>	\$838.34
<b>3rd Quarter 2008</b>	\$706.63	-\$7.89	\$849.50

### NAICS Covered Employment Quarterly Data 3rd Quarter 2009

SUPER SECTOR	Employment	Change	
		Quarter	Year
Construction	16,515	-559	-2,567
Education & Health Services	35,948	661	1,513
Federal	8,522	-45	135
Financial Activities	9,264	-87	-901
Information	2,571	-46	-156
Leisure & Hospitality	25,737	-273	-84
Local	28,363	-1,979	813
Manufacturing	10,653	-423	-1,463
Natural Resources & Mining	10,307	-437	-3,722
Nonclassified	62	11	-13
Other Services	6,330	-173	-359
Professional & Business Services	16,533	-313	-1,931
State	9,531	-410	120
Trade, Transportation & Utilities	38,978	-369	-2,170
<b>TOTAL</b>	<b>219,314</b>	<b>-4,442</b>	<b>-10,785</b>

### Size Class Employment Composition 3rd Quarter 2009



\*Counties in WDA: Aransas, Bee, Brooks, Duval, Jim Wells, Kenedy, Kleberg, Live Oak, McMullen, Nueces, Refugio, & San Patricio