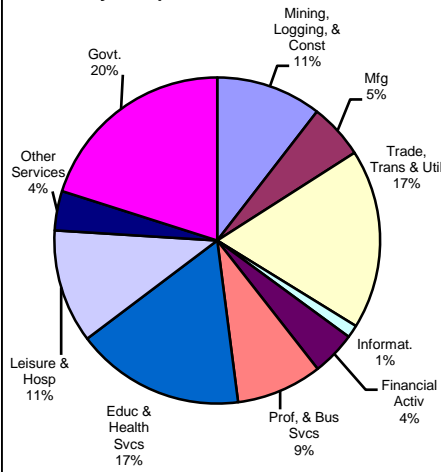
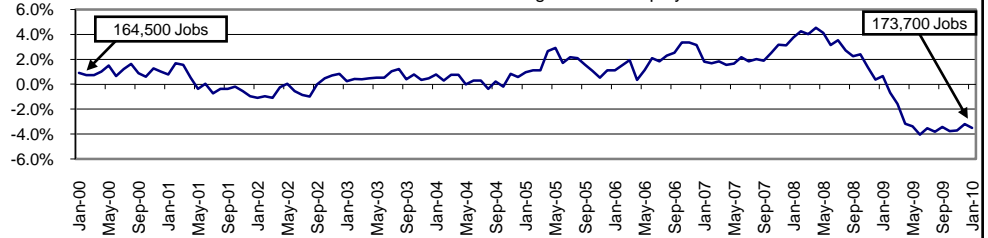


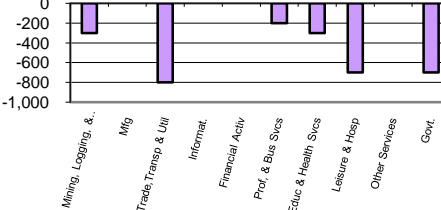
Industry Composition



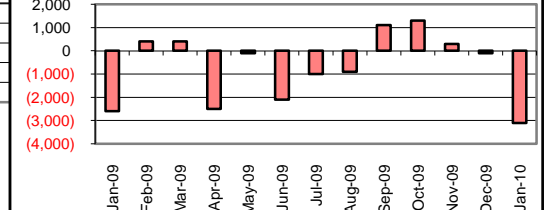
Annual Growth Rate for Total NonAgricultural Employment



Monthly Change by Industry



Monthly Change in Total Nonag Employment



Employment by Industry

	Jan-2010		Dec-2009		Jan-2009		Monthly Change		Annual Change	
	Jan-2010	Dec-2009	Jan-2009	Actual	%	Actual	%			
Total Nonagricultural	173,700	176,800	180,000	-3,100	-1.8%	-6,300	-3.5%			
Mining, Logging, & Const	18,200	18,500	22,600	-300	-1.6%	-4,400	-19.5%			
Manufacturing	9,500	9,500	10,700	0	0.0%	-1,200	-11.2%			
Trade, Transp., & Utilities	31,000	31,800	31,700	-800	-2.5%	-700	-2.2%			
Information	2,200	2,200	2,300	0	0.0%	-100	-4.4%			
Financial Activities	7,600	7,600	7,800	0	0.0%	-200	-2.6%			
Profes., & Business Svcs	14,800	15,000	16,200	-200	-1.3%	-1,400	-8.6%			
Education & Health Svcs	29,100	29,400	28,200	-300	-1.0%	900	3.2%			
Leisure & Hospitality	19,600	20,300	19,500	-700	-3.5%	100	0.5%			
Other Services	6,800	6,800	6,900	0	0.0%	-100	-1.5%			
Government	34,900	35,600	34,100	-700	-2.0%	800	2.4%			

Size Class of Industries

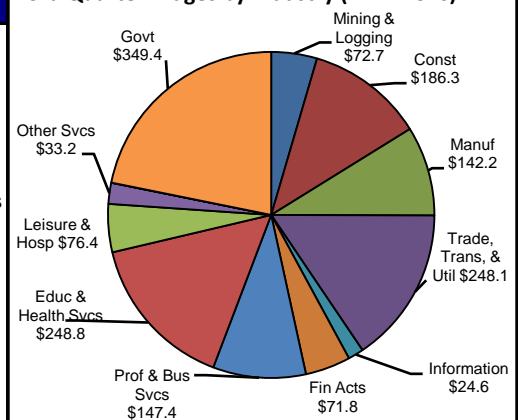
as of September 2009

Size Class	Employees Per Firm	Number of Firms	Employment in Size Class	% of Total Employment
9	1000+	19	43535	25.2%
8	500-999	20	13488	7.8%
7	250-499	40	13523	7.8%
6	100-249	190	28961	16.8%
5	50-99	273	18964	11.0%
4	20-49	743	22498	13.0%
3	10-19	1026	13833	8.0%
2	5-9	1530	10113	5.9%
1	1-4	3655	7708	4.5%
0	0	624	0	0.0%
TOTAL		8120	172623	100.0%

Comments for January 2010

The Corpus Christi MSA lost -3,100 jobs over the month in Total Nonagricultural Employment. This month's loss was more than the five-year average decrease of -2,700 jobs but matched the January 2008 decrease. For the year, employment decreased -3.5 percent. Retail Trade lost -700 jobs over the month as area stores cut back on the amount of jobs for the Christmas shopping season. This seasonal decrease was less than last year's decrease but was well within historic levels. Retail Trade had a small -1.0 percent decrease for the year. The Local Government Sector also had a seasonal decrease for January. Area governments shed -500 jobs as the fall semester came to an end. Jobs are expected to bounce back next month as area districts hire again for the spring semester.

3rd Quarter Wages by Industry (in millions)



Unemployment Information (all estimates are in thousands)

	Corpus Christi MSA				Texas (Actual)				United States (Actual)			
	C.L.F.	Emp.	Unemp.	% Rate	C.L.F.	Emp.	Unemp.	% Rate	C.L.F.	Emp.	Unemp.	% Rate
Jan-2010	210.3	192.7	17.6	8.4	12,094.1	11,049.8	1,044.4	8.6	152,957.0	136,809.0	16,147.0	10.6
Dec-2009	209.2	193.1	16.1	7.7	12,027.7	11,069.9	957.8	8.0	152,693.0	137,953.0	14,740.0	9.7
Jan-2009	205.3	192.6	12.7	6.2	11,738.2	10,937.5	800.6	6.8	153,445.0	140,436.0	13,009.0	8.5