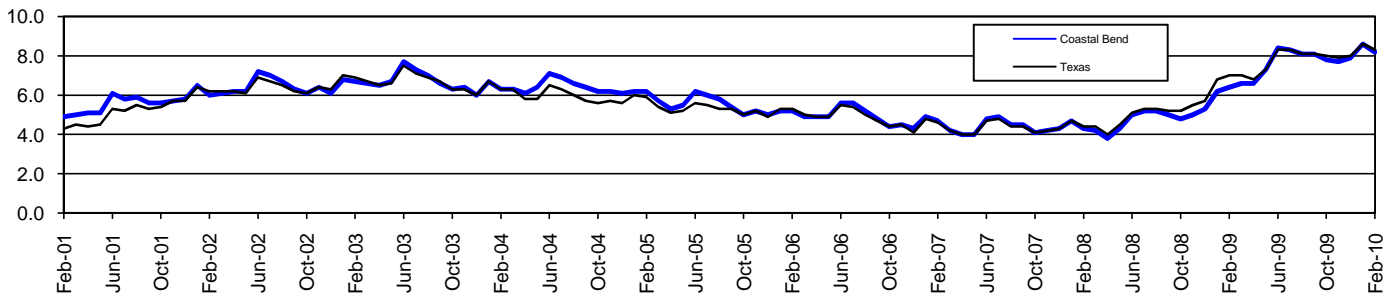


Coastal Bend Workforce Development Area*

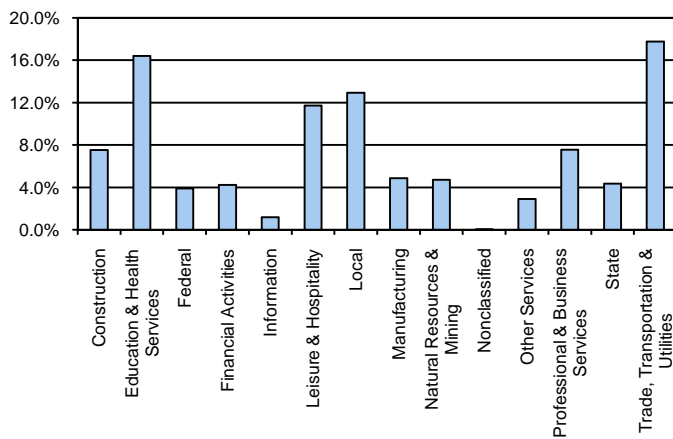
February 2010

Coastal Bend WDA					Texas				
	CLF	Employed	Unemployed	Rate		CLF	Employed	Unemployed	Rate
Feb-10	281,516	258,465	23,051	8.2	Feb-10	12,092,981	11,085,463	1,007,518	8.3
Jan-10	280,893	256,853	24,040	8.6	Jan-10	12,094,441	11,049,722	1,044,719	8.6
Feb-09	274,435	256,798	17,637	6.4	Feb-09	11,759,999	10,939,980	820,019	7.0

Historical Unemployment Rates



Coastal Bend WDA Industry Composition 3rd Quarter 2009



Total WDA Claims

	Feb-10	Jan-10	Feb-09	OTY
Initial	1,950	2,303	2,851	-901
Continued	10,363	11,915	9,173	1,190
Continued Claims for the Week of the 12th				
Continued	7,151	7,958	7,299	-148

Texas Unemployment Insurance Claims Filed

	Feb-10	Jan-10	Feb-09	OTY
Initial	86,282	108,752	114,484	-28,202
Continued	1,020,691	1,201,595	905,168	115,523
Continued Claims for the Week of the 12th				
Continued	243,367	254,414	223,184	20,183

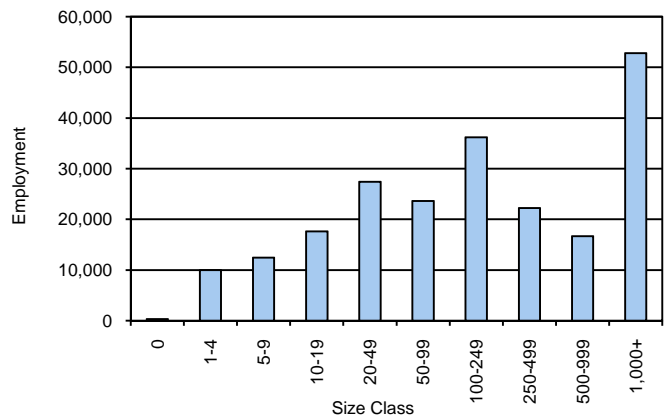
Coastal Bend WDA Average Weekly Wage

	Coastal Bend	WDA Qtr. Chg.	Texas
3rd Quarter 2009	\$698.74	\$11.70	\$844.59
2nd Quarter 2009	\$687.04	WDA OTY Chg.	\$838.34
3rd Quarter 2008	\$706.63	-\$7.89	\$849.50

NAICS Covered Employment Quarterly Data 3rd Quarter 2009

SUPER SECTOR	Employment	Change	
		Quarter	Year
Construction	16,515	-559	-2,567
Education & Health Services	35,948	661	1,513
Federal	8,522	-45	135
Financial Activities	9,264	-87	-901
Information	2,571	-46	-156
Leisure & Hospitality	25,737	-273	-84
Local	28,363	-1,979	813
Manufacturing	10,653	-423	-1,463
Natural Resources & Mining	10,307	-437	-3,722
Nonclassified	62	11	-13
Other Services	6,330	-173	-359
Professional & Business Services	16,533	-313	-1,931
State	9,531	-410	120
Trade, Transportation & Utilities	38,978	-369	-2,170
TOTAL	219,314	-4,442	-10,785

Size Class Employment Composition 3rd Quarter 2009



*Counties in WDA: Aransas, Bee, Brooks, Duval, Jim Wells, Kenedy, Kleberg, Live Oak, McMullen, Nueces, Refugio, & San Patricio