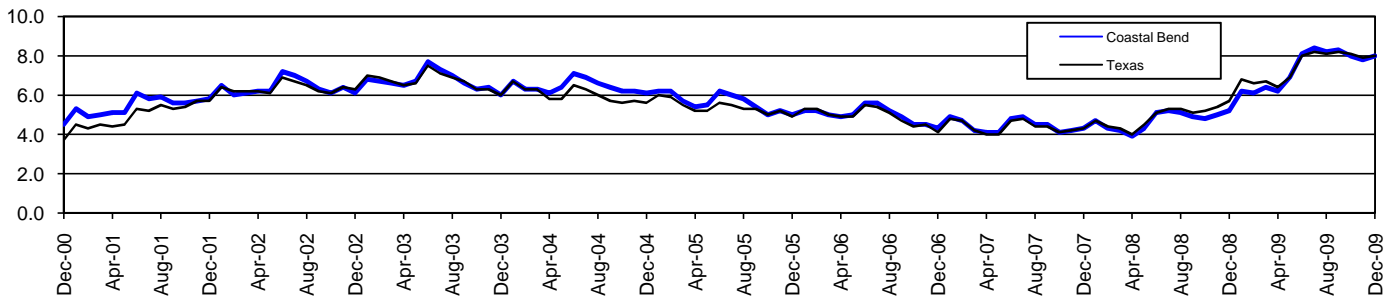


# Coastal Bend Workforce Development Area\*

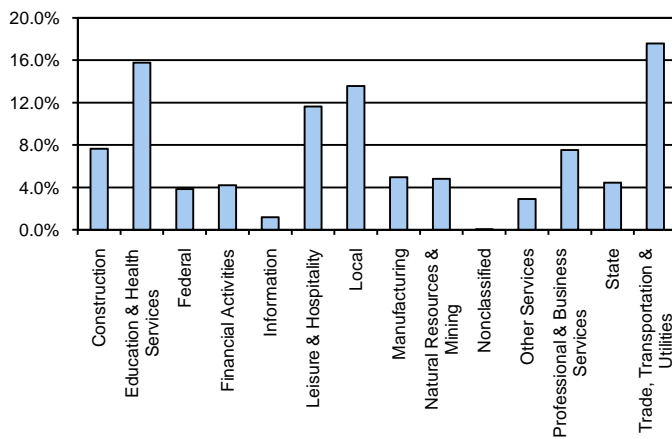
## December 2009

Coastal Bend WDA					Texas				
	CLF	Employed	Unemployed	Rate		CLF	Employed	Unemployed	Rate
<b>Dec-09</b>	278,790	256,514	22,276	8.0	<b>Dec-09</b>	12,078,674	11,115,658	963,016	8.0
<b>Nov-09</b>	279,224	257,472	21,752	7.8	<b>Nov-09</b>	12,101,184	11,148,871	952,313	7.9
<b>Dec-08</b>	273,051	258,754	14,297	5.2	<b>Dec-08</b>	11,788,631	11,120,773	667,858	5.7

### Historical Unemployment Rates



### Coastal Bend WDA Industry Composition 2nd Quarter 2009



### Total WDA Claims

	Dec-09	Nov-09	Dec-08	OTY
<b>Initial</b>	2,457	2,477	2,079	<b>378</b>
<b>Continued</b>	12,344	12,681	8,920	<b>3,424</b>
<b>Continued Claims for the Week of the 12th</b>				
<b>Continued</b>	4,418	4,302	2,754	<b>1,664</b>

### Texas Unemployment Insurance Claims Filed

	Dec-09	Nov-09	Dec-08	OTY
<b>Initial</b>	100,826	98,560	111,531	<b>-10,705</b>
<b>Continued</b>	1,147,179	1,219,676	818,143	<b>329,036</b>
<b>Continued Claims for the Week of the 12th</b>				
<b>Continued</b>	266,245	259,781	109,365	<b>156,880</b>

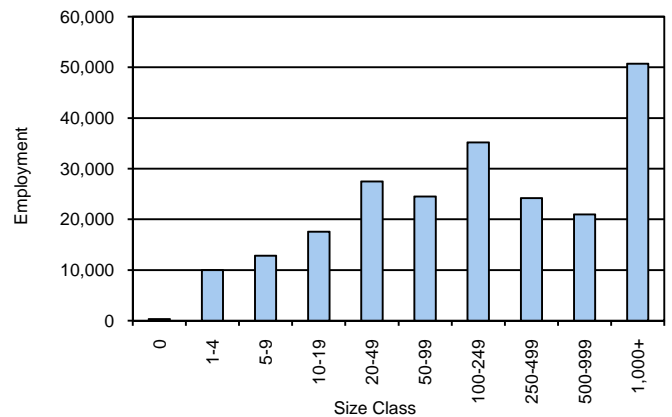
### Coastal Bend WDA Average Weekly Wage

	Coastal Bend	WDA Qtr. Chg.	Texas
<b>2nd Quarter 2009</b>	\$687.04	-\$19.40	\$838.34
<b>1st Quarter 2009</b>	\$706.44	<b>WDA OTY Chg.</b>	\$885.88
<b>2nd Quarter 2008</b>	\$706.95	-\$19.91	\$848.95

### NAICS Covered Employment Quarterly Data 2nd Quarter 2009

SUPER SECTOR	Employment	Change	
		Quarter	Year
Construction	17,074	-2,169	-2,547
Education & Health Services	35,287	480	1,156
Federal	8,567	100	340
Financial Activities	9,351	-217	-781
Information	2,617	2	-158
Leisure & Hospitality	26,010	1,463	265
Local	30,342	-111	128
Manufacturing	11,076	-634	-1,157
Natural Resources & Mining	10,744	-1,288	-2,585
Nonclassified	51	27	-41
Other Services	6,503	65	-245
Professional & Business Services	16,846	-758	-1,475
State	9,941	148	663
Trade, Transportation & Utilities	39,347	-608	-1,652
<b>TOTAL</b>	<b>223,756</b>	<b>-3,500</b>	<b>-8,089</b>

### Size Class Employment Composition 2nd Quarter 2009



\*Counties in WDA: Aransas, Bee, Brooks, Duval, Jim Wells, Kenedy, Kleberg, Live Oak, McMullen, Nueces, Refugio, & San Patricio

Available at <http://www.tracer2.com/>